

BALDOR® • **RELIANCE**

Product Information Packet

EJMM3219T

7.5HP,3450RPM,3PH,60HZ,184JM,3632M,OPSB

Copyright © All product information within this document is subject to Baldor Electric Company copyright © protection, unless otherwise noted.

| Part Detail | | | | | | | | | |
|-------------------|--------------|----------------|-------|----------------|----------|---------------|------------|--|--|
| Revision: | B | Status: | PRD/A | Change #: | | Proprietary: | No | | |
| Type: | AC | Prod. Type: | 3632M | Elec. Spec: | 36WGS516 | CD Diagram: | | | |
| Enclosure: | OPSB | Mfg Plant: | | Mech. Spec: | 36G687 | Layout: | | | |
| Frame: | 184JM | Mounting: | F1 | Poles: | 02 | Created Date: | 07-01-2010 | | |
| Base: | RG | Rotation: | R | Insulation: | F | Eff. Date: | 11-10-2010 | | |
| Leads: | 9#16 | Literature: | | Elec. Diagram: | | Replaced By: | | | |
| Nameplate NP1259L | | | | | | | | | |
| CAT.NO. | EJMM3219T | | | | | | | | |
| SPEC. | 36G687S516 | | | | | | | | |
| HP | 7.5 | | | | | | | | |
| VOLTS | 208-230/460 | | | | | | | | |
| AMP | 18-17.2/8.6 | | | | | | | | |
| RPM | 3450 | | | | | | | | |
| FRAME | 184JM | HZ | 60 | PH | 3 | | | | |
| SER.F. | 1.15 | CODE | L | DES | A | CL | F | | |
| NEMA-NOM-EFF | 88.5 | PF | 89 | | | | | | |
| RATING | 40C AMB-CONT | | | | | | | | |
| CC | 010A | USABLE AT 208V | | | | | | | |
| DE | 6207 | ODE | 6205 | | | | | | |
| ENCL | OPSB | SN | | | | | | | |
| | | | | | | | | | |

| Parts List | | |
|----------------|--|----------|
| Part Number | Description | Quantity |
| SA199614 | SA 36G687S516 | 1.000 EA |
| RA186942 | RA 36G687S516 | 1.000 EA |
| S/P107-000-001 | SUPER E PROC'S-FS & WS PLTS-POLYREX EM G | 1.000 EA |
| 36CB3004 | 36 CB CASTING W/1.09 DIA LEAD HOLE @ 6:0 | 1.000 EA |
| 51XB1016A08 | 10-16X 1/2HXWSSLD SERTYB | 2.000 EA |
| 11XW1032G06 | 10-32 X .38, TAPTITE II, HEX WSHR SLTD U | 1.000 EA |
| HW3001B01 | 003SS CUP WASHER, FOR #8 SCREW | 1.000 EA |
| 36EP3200A25 | FR ENDPLATE, MACH | 1.000 EA |
| HA1103A08 | RODENT SCREEN, 36 FRAME, OPEN, FRONT END | 1.000 EA |
| 51XW1032A06 | 10-32 X .38, TAPTITE II, HEX WSHR SLTD S | 4.000 EA |
| HW1000A10 | #10 FLAT WASHER (SAE) | 4.000 EA |
| HW4500A01 | 1641B(ALEMITE)400 UNIV, GREASE FITT | 1.000 EA |
| HW4500A17 | 317400 ALEMITE GREASE RELIEF | 1.000 EA |
| HW5100A05 | WVY WSHR F/205 & 304 BRGS | 1.000 EA |
| 36EP3405A04 | PUEP 182-4C OPEN 207 BRG W/ TSLV, GRSR | 1.000 EA |
| HA1102A11 | SCREEN, RODENT FOR 36EP3405 | 2.000 EA |
| 51XW1032A06 | 10-32 X .38, TAPTITE II, HEX WSHR SLTD S | 4.000 EA |
| HW1000A10 | #10 FLAT WASHER (SAE) | 4.000 EA |
| HW4500A01 | 1641B(ALEMITE)400 UNIV, GREASE FITT | 1.000 EA |
| HW4500A17 | 317400 ALEMITE GREASE RELIEF | 1.000 EA |
| 10XN2520A24 | 1/4-20X 1 1/2 HEX HD X | 4.000 EA |
| HW1001A25 | LOCKWASHER 1/4, ZINC PLT .493 OD, .255 I | 4.000 EA |
| 36CB4516 | 36 LIPPED CB LID | 1.000 EA |
| 51XW0832A07 | 8-32 X .44, TAPTITE II, HEX WSHR SLTD SE | 4.000 EA |

| Parts List (continued) | | |
|------------------------|--|----------|
| Part Number | Description | Quantity |
| HA1005A07SP | SLINGER, OD 2.25, ID 1.344, 307 BRG | 1.000 EA |
| HW2501D13SP | KEY, 3/16 SQ X 1.375 | 1.000 EA |
| HA7000A01 | KEY RETAINER 7/8" DIA SHAFT | 1.000 EA |
| 85XU0407S04 | 4X1/4 U DRIVE PIN STAINLESS | 2.000 EA |
| MJ1000A75 | GREASE, POLYREX EM EXXON | 0.050 LB |
| HA3101A25 | THRUBOLT 1/4-20 X 11.000 OHIO ROD | 4.000 EA |
| 36AD2004A01 | BAFFLE PLATE,MOD 36-SLTD BAND MTRS DELTA | 2.000 EA |
| MG1000Y03 | WILKO 689.710 GOLD PAINT SUPER E | 0.022 GA |
| LB1125C02 | SUPER-E (STOCK CTN LABEL SUPER-E WITH FL | 1.000 EA |
| LB1357 | ENERGY GUIDE LABEL (BOX LABEL) | 1.000 SH |
| LC0005E01 | CONN.DIA./WARNING LABEL (LC0005/LB1119) | 1.000 EA |
| NP1259L | ALUM SUPER-E UL CSA-EEV CC NEMA PREMIUM | 1.000 EA |
| 36PA1000 | PACK GROUP W/LB5001 | 1.000 EA |

Performance Data at 460V, 60Hz, 7.5HP (Typical performance - Not guaranteed values)

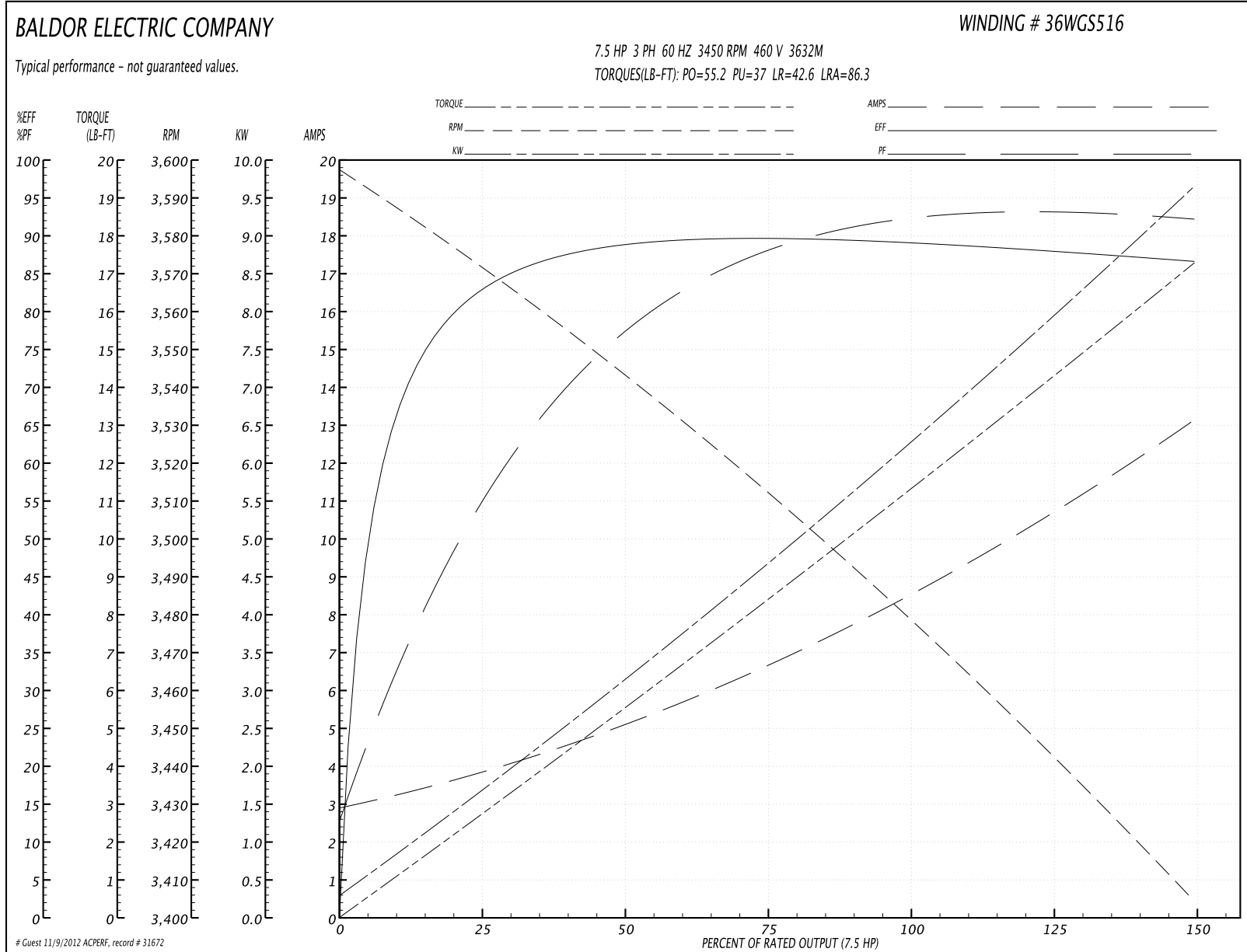
General Characteristics

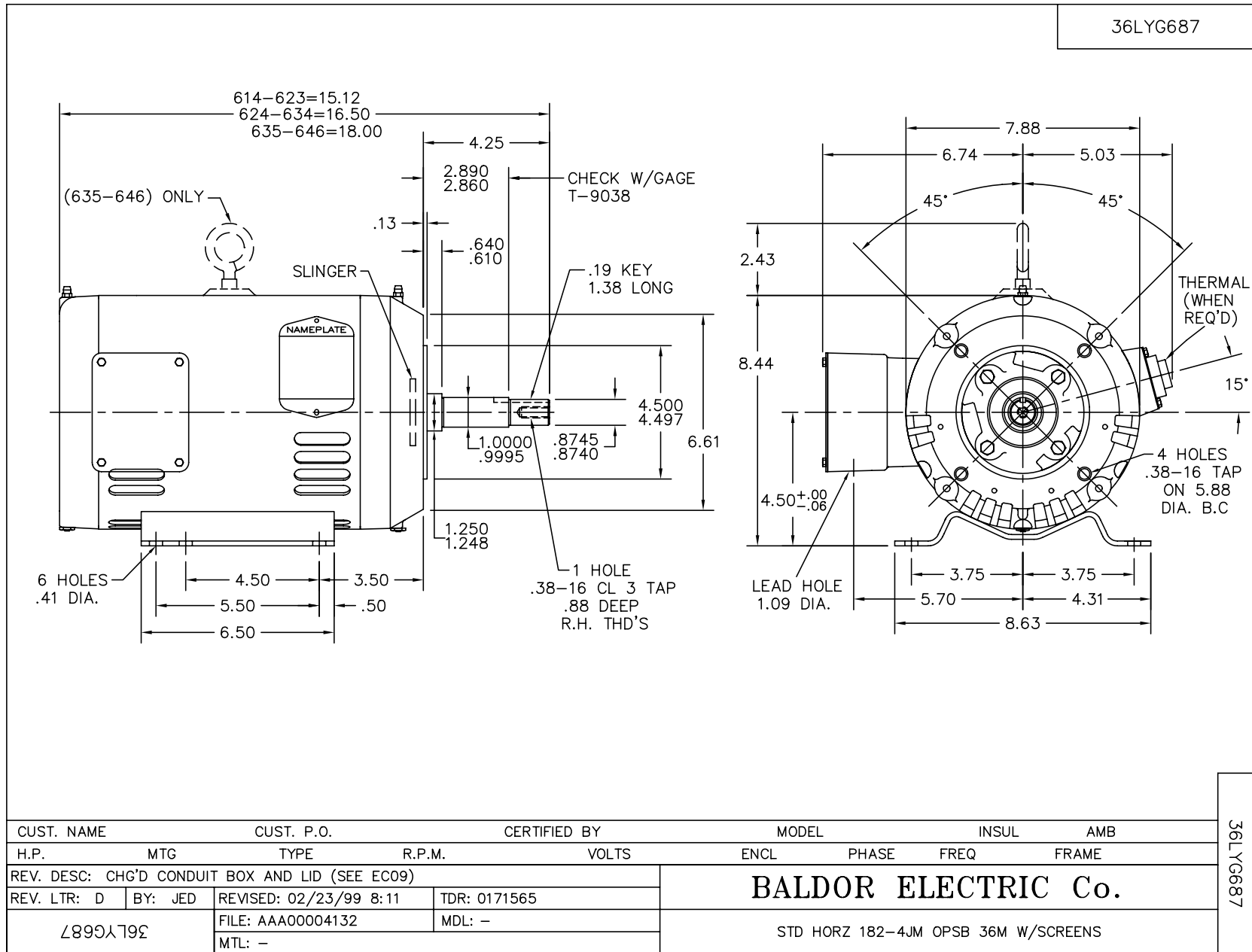
| | | | |
|---------------------------------|----------------------------------|-----------------------------|------------|
| Full Load Torque: | 11.3 LB-FT | Start Configuration: | DOL |
| No-Load Current: | 3.02 Amps | Break-Down Torque: | 55.2 LB-FT |
| Line-line Res. @ 25°C.: | 1.5664 Ohms A Ph / 0.0 Ohms B Ph | Pull-Up Torque: | 37.0 LB-FT |
| Temp. Rise @ Rated Load: | 43 C | Locked-Rotor Torque: | 42.6 LB-FT |
| Temp. Rise @ S.F. Load: | 52 C | Starting Current: | 86.3 Amps |

Load Characteristics

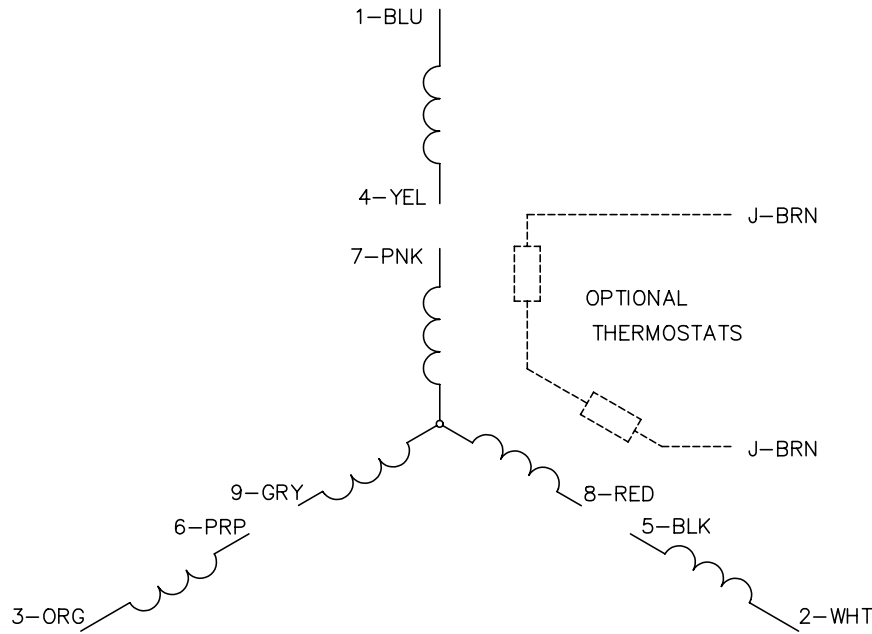
| % of Rated Load | 25 | 50 | 75 | 100 | 125 | 150 | S.F. |
|------------------------|-----------|-----------|-----------|------------|------------|------------|-------------|
| Power Factor: | 57.0 | 80.0 | 87.0 | 91.0 | 93.0 | 93.0 | 92.0 |
| Efficiency: | 81.9 | 88.1 | 89.2 | 88.9 | 88.0 | 86.5 | 88.4 |
| Speed: | 3571.8 | 3543.0 | 3513.1 | 3478.8 | 3443.2 | 3403.8 | 3457.0 |
| Line Amperes: | 3.68 | 4.98 | 6.72 | 8.63 | 10.7 | 13.1 | 9.87 |

Performance Graph at 460V, 60Hz, 7.5HP Typical performance - Not guaranteed values





CD0005

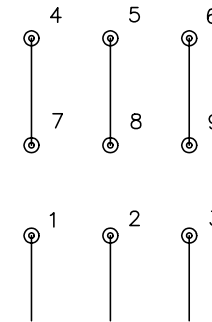


LOW VOLTAGE
(2Y)



LINE

HIGH VOLTAGE
(1Y)



LINE

NOTES:

1. INTERCHANGE ANY TWO LINE LEADS TO REVERSE ROTATION.
2. OPTIONAL THERMOSTATS ARE PROVIDED WHEN SPECIFIED.
3. ACTUAL NUMBER OF INTERNAL PARALLEL CIRCUITS MAY BE A MULTIPLE OF THOSE SHOWN ABOVE.
4. LEAD COLORS ARE OPTIONAL. LEADS MUST ALWAYS BE NUMBERED AS SHOWN.

| | | | |
|---|---------|-------------------------|--------------|
| REV. DESC: REVISE TO SHOW OPTIONAL COLORS | | | |
| REV. LTR: E | BY: JLP | REVISED: 01/19/99 10:15 | TDR: 0171435 |
| 90000 | | FILE: AAA00005140 | MDL: - |
| | | MTL: - | |

BALDOR ELECTRIC Co.

3PH, DV, 9 LEADS

CD0005