

# **BALDOR**® • *RELIANCE*

## **Product Information Packet**

# **EJMM3311T**

**7.5HP, 1770RPM, 3PH, 60HZ, 213JM, 3733M, OPSB**

Copyright © All product information within this document is subject to Baldor Electric Company copyright © protection, unless otherwise noted.

Part Detail									
Revision:	C	Status:	PRD/A	Change #:		Proprietary:	No		
Type:	AC	Prod. Type:	3733M	Elec. Spec:	37WGS520	CD Diagram:			
Enclosure:	OPSB	Mfg Plant:		Mech. Spec:	37F784	Layout:			
Frame:	213JM	Mounting:	F1	Poles:	04	Created Date:	05-07-2010		
Base:	RG	Rotation:	R	Insulation:	F	Eff. Date:	03-05-2012		
Leads:	9#14	Literature:		Elec. Diagram:		Replaced By:			
Nameplate NP1259L									
CAT.NO.	EJMM3311T								
SPEC.	37F784S520G1								
HP	7.5								
VOLTS	230/460								
AMP	19.4/9.7								
RPM	1770								
FRAME	213JM	HZ	60			PH	3		
SER.F.	1.15	CODE	J			DES	A	CL	F
NEMA-NOM-EFF	91	PF	79						
RATING	40C AMB-CONT								
CC	010A	USABLE AT 208V							
DE	6309	ODE	6206						
ENCL	OPSB	SN							

Parts List		
Part Number	Description	Quantity
SA194596	SA 37F784S520G1	1.000 EA
RA182182	RA 37F784S520G1	1.000 EA
S/P107-000-001	SUPER E PROC'S-FS & WS PLTS-POLYREX EM G	1.000 EA
HA6361A01	LIFTING LUG FOR 37, 39 & 40 FRAME (AUTOP	2.000 EA
37CB3006	37 CB CASTING W/1.38 LEAD HOLE @ 6:00	1.000 EA
51XW2520A10	.25-20 X .62, TAPTITE II, HEX WSHR SLTD	2.000 EA
11XW1032G06	10-32 X .38, TAPTITE II, HEX WSHR SLTD U	1.000 EA
37EP3200A31	FR ENDPLATE, 37L&M, OPEN, MACH, W/GREASE	1.000 EA
HA1104A01	RODENT SCREEN 37 FRAME 206 BRG FRONT END	1.000 EA
51XT1032A04	10-32X1/4 HX WA SL SR TYT (F/S)	4.000 EA
HW1000A10	#10 FLAT WASHER (SAE)	4.000 EA
HW4500A01	1641B(ALEMITE)400 UNIV, GREASE FITT	1.000 EA
HW4500A17	317400 ALEMITE GREASE RELIEF	1.000 EA
HW5100A06	W2420-025 WVY WSHR (WB)	1.000 EA
37EP3401A11	PUEP 309 BRG W/METAL SLINGER, GRS & RELI	1.000 EA
HA1222	RODENT SCREEN - 37 C-FACE MOTORS	4.000 EA
51XW1032A06	10-32 X .38, TAPTITE II, HEX WSHR SLTD S	4.000 EA
HW1000A10	#10 FLAT WASHER (SAE)	4.000 EA
HW4500A01	1641B(ALEMITE)400 UNIV, GREASE FITT	1.000 EA
HW4500A17	317400 ALEMITE GREASE RELIEF	1.000 EA
10XN2520A36	1/4-20X 2 1/4 HEX HD X	4.000 EA
HW1001A25	LOCKWASHER 1/4, ZINC PLT .493 OD, .255 I	4.000 EA
XY3118A12	5/16-18 HEX NUT DIRECTIONAL SERRATION	4.000 EA
37CB4516	LIPPED LID FOR 37 FRAME NEC KOBX	1.000 EA

Parts List (continued)		
Part Number	Description	Quantity
51XW0832A07	8-32 X .44, TAPTITE II, HEX WSHR SLTD SE	4.000 EA
HA2009A02	SLINGER MODEL 37 PUMP MOTORS-2.75 DIA. A	1.000 EA
HW2501D13SP	KEY, 3/16 SQ X 1.375	1.000 EA
HA7000A01	KEY RETAINER 7/8" DIA SHAFT	1.000 EA
85XU0407S04	4X1/4 U DRIVE PIN STAINLESS	2.000 EA
LB1115	LABEL,LIFTING DEVICE	1.000 EA
MJ1000A75	GREASE, POLYREX EM EXXON	0.050 LB
MG1000Y03	WILKO 689.710 GOLD PAINT SUPER E	0.028 GA
HA3104A39	THRUBOLT-5/16-18 X 12.250	4.000 EA
37AD2001A01	BAFFLE PLATE, STAMPED	2.000 EA
LB1125C02	SUPER-E (STOCK CTN LABEL SUPER-E WITH FL	1.000 EA
LC0005E01	CONN.DIA./WARNING LABEL (LC0005/LB1119)	1.000 EA
LB1357	ENERGY GUIDE LABEL (BOX LABEL)	1.000 SH
NP1259L	ALUM SUPER-E UL CSA-EEV CC NEMA PREMIUM	1.000 EA
36PA1001	PACKAGING GROUP	1.000 EA

**Performance Data at 460V, 60Hz, 7.5HP (Typical performance - Not guaranteed values)**

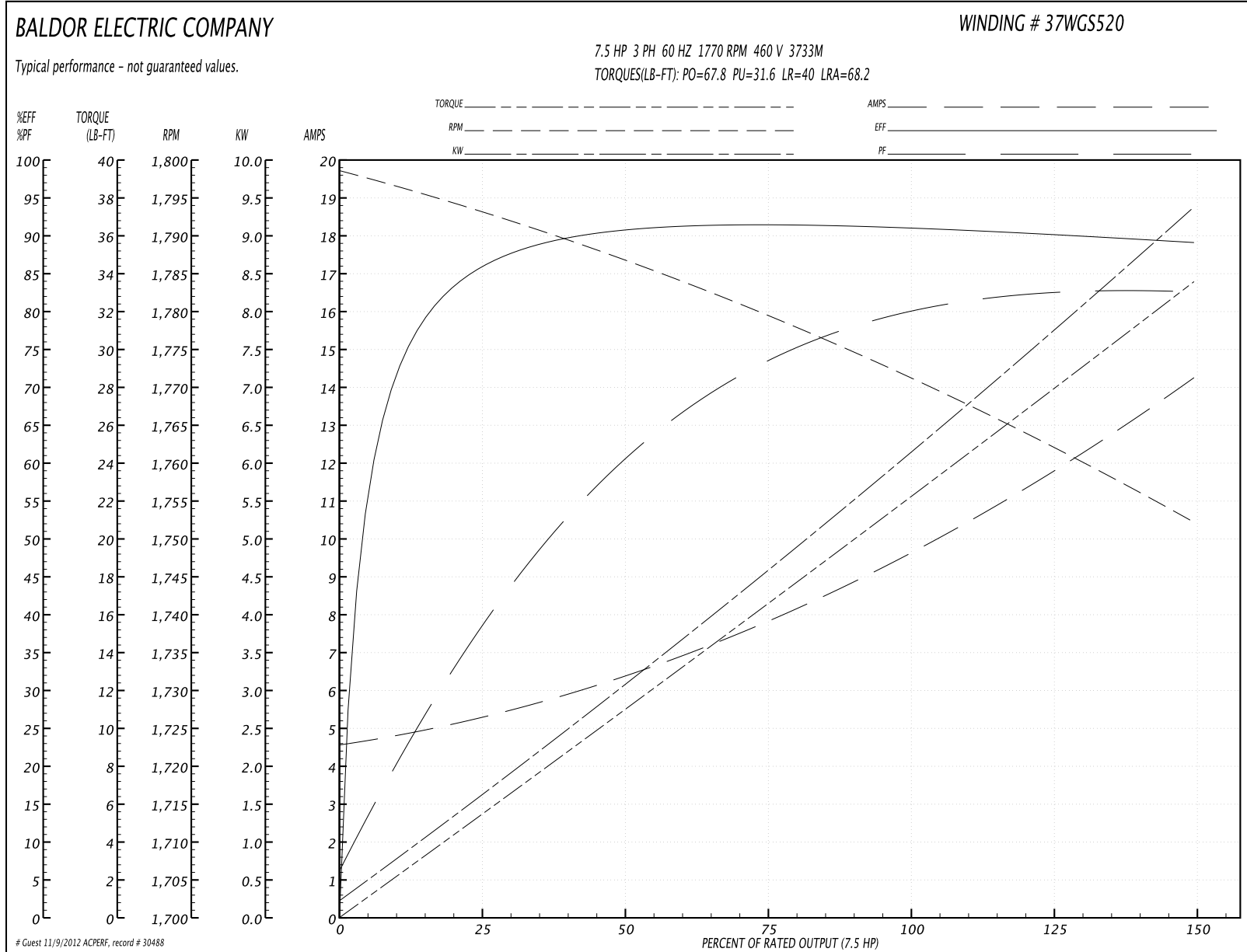
**General Characteristics**

<b>Full Load Torque:</b>	22.17 LB-FT	<b>Start Configuration:</b>	DOL
<b>No-Load Current:</b>	4.67 Amps	<b>Break-Down Torque:</b>	67.8 LB-FT
<b>Line-line Res. @ 25°C.:</b>	1.5572 Ohms A Ph / 0.0 Ohms B Ph	<b>Pull-Up Torque:</b>	31.6 LB-FT
<b>Temp. Rise @ Rated Load:</b>	35 C	<b>Locked-Rotor Torque:</b>	40.0 LB-FT
<b>Temp. Rise @ S.F. Load:</b>	43 C	<b>Starting Current:</b>	68.2 Amps

**Load Characteristics**

<b>% of Rated Load</b>	<b>25</b>	<b>50</b>	<b>75</b>	<b>100</b>	<b>125</b>	<b>150</b>	<b>S.F.</b>
<b>Power Factor:</b>	40.0	62.0	73.0	79.0	82.0	83.0	81.0
<b>Efficiency:</b>	85.6	90.5	91.4	91.2	90.4	89.1	90.7
<b>Speed:</b>	1792.9	1786.8	1778.7	1771.9	1762.9	1751.6	1766.0
<b>Line Amperes:</b>	5.16	6.29	7.88	9.72	11.8	14.2	11.0

Performance Graph at 460V, 60Hz, 7.5HP Typical performance - Not guaranteed values



**Performance Data at 460V, 60Hz, 7.5HP (Typical performance - Not guaranteed values)**

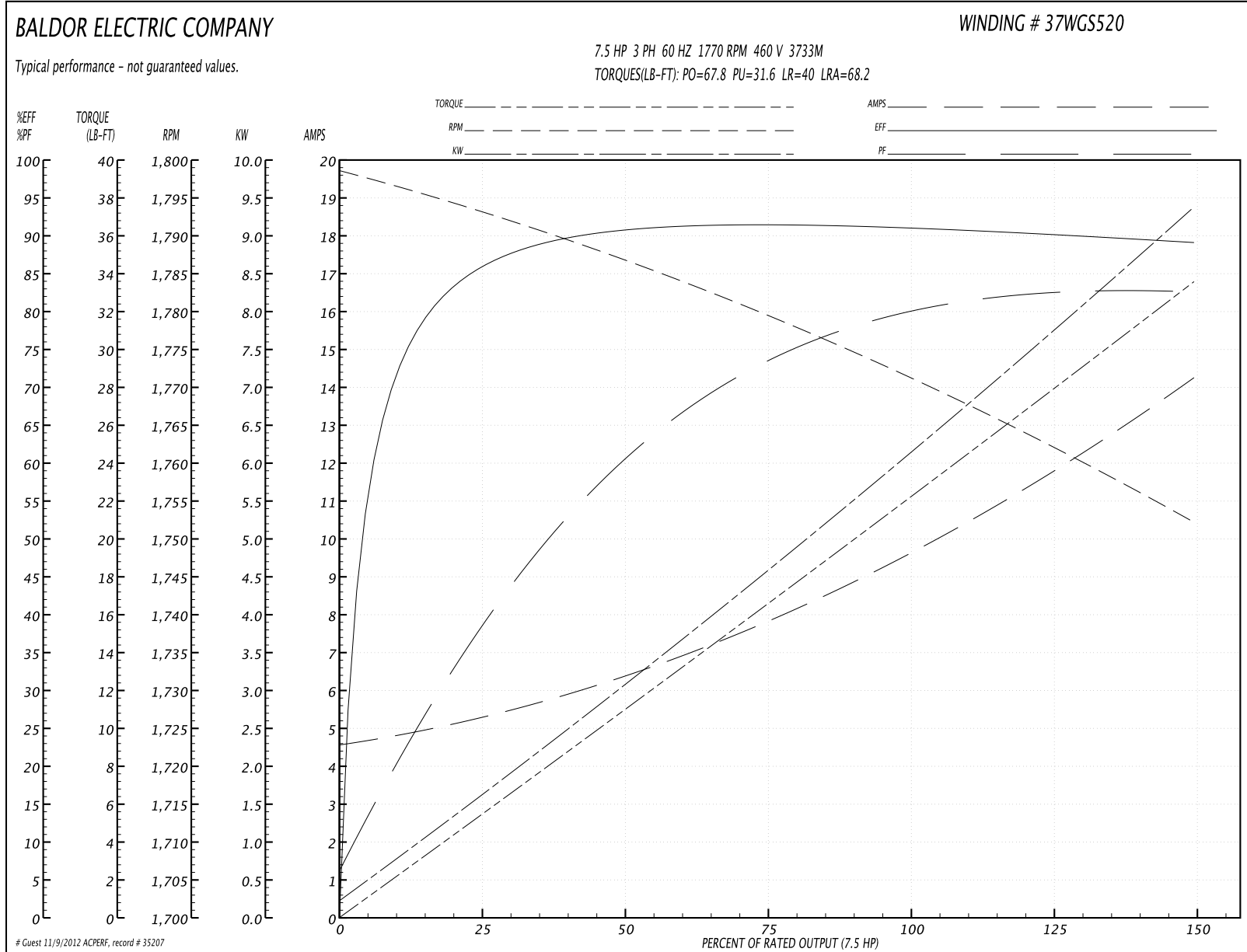
**General Characteristics**

<b>Full Load Torque:</b>	22.17 LB-FT	<b>Start Configuration:</b>	DOL
<b>No-Load Current:</b>	4.67 Amps	<b>Break-Down Torque:</b>	67.8 LB-FT
<b>Line-line Res. @ 25°C.:</b>	1.5572 Ohms A Ph / 0.0 Ohms B Ph	<b>Pull-Up Torque:</b>	31.6 LB-FT
<b>Temp. Rise @ Rated Load:</b>	35 C	<b>Locked-Rotor Torque:</b>	40.0 LB-FT
<b>Temp. Rise @ S.F. Load:</b>	43 C	<b>Starting Current:</b>	68.2 Amps

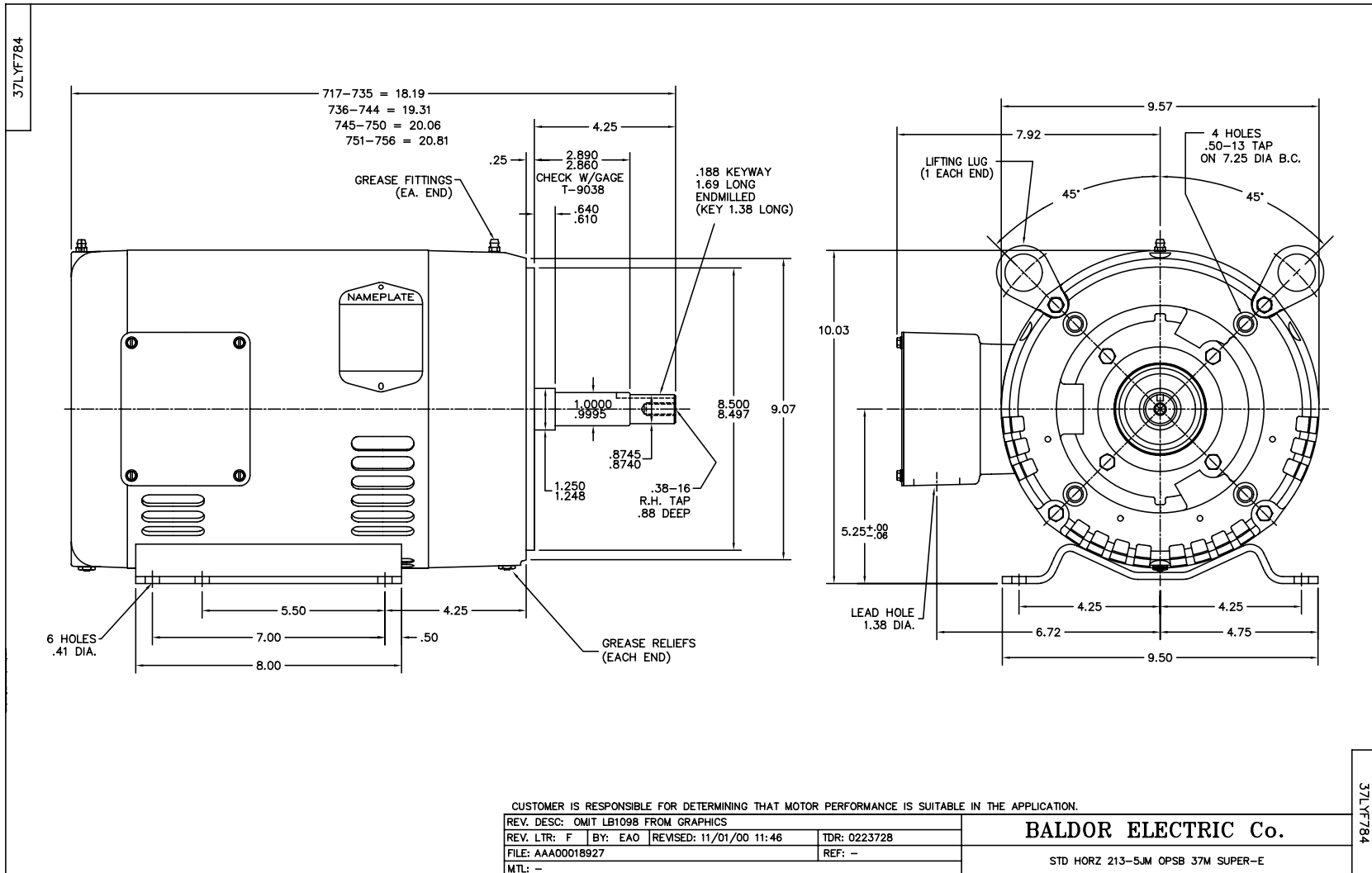
**Load Characteristics**

% of Rated Load	25	50	75	100	125	150	S.F.
<b>Power Factor:</b>	40.0	62.0	73.0	79.0	82.0	83.0	81.0
<b>Efficiency:</b>	85.6	90.5	91.4	91.2	90.4	89.1	90.7
<b>Speed:</b>	1792.9	1786.8	1778.7	1771.9	1762.9	1751.6	1766.0
<b>Line Amperes:</b>	5.16	6.29	7.88	9.72	11.8	14.2	11.0

Performance Graph at 460V, 60Hz, 7.5HP Typical performance - Not guaranteed values



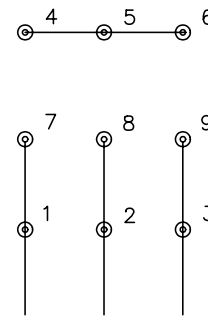




CD0005

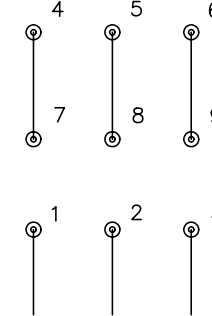


LOW VOLTAGE  
(2Y)



LINE

HIGH VOLTAGE  
(1Y)



LINE

NOTES:

1. INTERCHANGE ANY TWO LINE LEADS TO REVERSE ROTATION.
2. OPTIONAL THERMOSTATS ARE PROVIDED WHEN SPECIFIED.
3. ACTUAL NUMBER OF INTERNAL PARALLEL CIRCUITS MAY BE A MULTIPLE OF THOSE SHOWN ABOVE.
4. LEAD COLORS ARE OPTIONAL. LEADS MUST ALWAYS BE NUMBERED AS SHOWN.

REV. DESC: REVISE TO SHOW OPTIONAL COLORS			
REV. LTR: E	BY: JLP	REVISED: 01/19/99 10:15	TDR: 0171435
90000		FILE: AAA00005140	MDL: -
		MTL: -	

**BALDOR ELECTRIC Co.**

3PH, DV, 9 LEADS

CD0005