

# **BALDOR® • RELIANCE**

## **Product Information Packet**

### **EL1406T**

**3HP,3450RPM,1PH,60HZ,182T,3628LC,OPEN,F1**

Copyright © All product information within this document is subject to Baldor Electric Company copyright © protection, unless otherwise noted.

Part Detail							
Revision:	F	Status:	PRD/A	Change #:		Proprietary:	No
Type:	AC	Prod. Type:	3628LC	Elec. Spec:	36WGS117	CD Diagram:	
Enclosure:	OPEN	Mfg Plant:		Mech. Spec:	36E002	Layout:	
Frame:	182T	Mounting:	F1	Poles:	02	Created Date:	11-13-2008
Base:	RG	Rotation:	R	Insulation:	B	Eff. Date:	05-22-2012
Leads:	4#14 A PH,2#16 B PH	Literature:		Elec. Diagram:		Replaced By:	

Nameplate NP2116L							
CAT.NO.	EL1406T						
SPEC.	36E002S117E7						
HP	3						
VOLTS	115/230						
AMP	24.6/12.3						
RPM	3450						
FRAME	182T	HZ	60	PH	1		
SER.F.	1.15	CODE	G	DES	L	CL	B
NEMA-NOM-EFF	81	PF	98				
RATING	40C AMB-CONT						
CC				USABLE AT 208V			
DE	6206	ODE	6205				
ENCL	OPEN	SN					

Parts List		
Part Number	Description	Quantity
SA177110	SA 36E002S117E7	1.000 EA
RA165163	RA 36E002S117E7	1.000 EA
OC3070C09	AEROVOX #Z24P247OM22A1 OIL CAP 70MFD/240	1.000 EA
EC1815A06SP	ELEC CAP 115V 2.0 X 4.3	1.000 EA
36CB3004	36 CB CASTING W/1.09 DIA LEAD HOLE @ 6:0	1.000 EA
51XB1016A08	10-16X 1/2HXWSSLD SERTYB	2.000 EA
11XW1032G06	10-32 X .38, TAPTITE II, HEX WSHR SLTD U	1.000 EA
HW3001B01	003SS CUP WASHER, FOR #8 SCREW	1.000 EA
36EP3200A01SP	FR ENDPLATE, MACH	1.000 EA
HW4500A01	1641B(ALEMITE)400 UNIV, GREASE FITT	1.000 EA
SP1008A01	BAFFLE, MODEL 36 & 37	1.000 EA
13XT0832A07	8-32X7/16 TYP 23 PAN HD SLT DX	2.000 EA
10XN2520A12	O1/4-20X 3/4 HEX HEAD CAP	2.000 EA
HW5100A05	WVY WSHR F/205 & 304 BRGS	1.000 EA
36EP3201A01	PU ENDPLATE, MACH 182-4T	1.000 EA
HW4500A01	1641B(ALEMITE)400 UNIV, GREASE FITT	1.000 EA
XY2520A12	1/4-20 HEX NUT, DIRECTIONAL SERRATIONS	4.000 EA
36CB4516	36 LIPPED CB LID	1.000 EA
51XW0832A07	8-32 X .44, TAPTITE II, HEX WSHR SLTD SE	4.000 EA
HW2501E16	3KEY, 1/4 SQ X 1.750	1.000 EA
HA7000A02	KEY RETAINER RING, 1 1/8 DIA, 1 3/8 DIA	1.000 EA
85XU0407S04	4X1/4 U DRIVE PIN STAINLESS	2.000 EA
WD1000A15	3-520132-2 AMP FLAG (4M/RL NON-CANC/NON-	4.000 EA
36CB3800SP	CAPACITOR COVER, CAST	1.000 EA

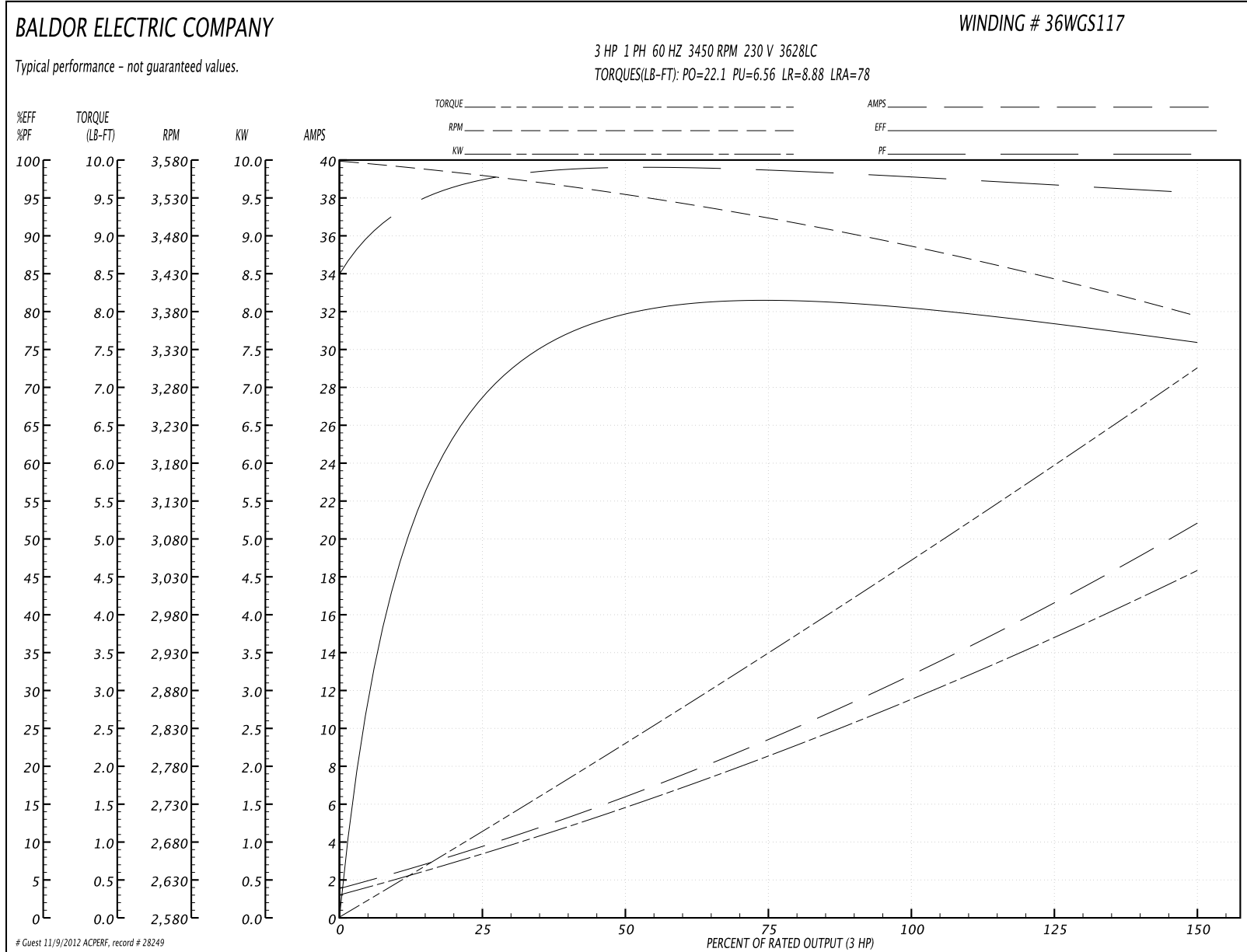
Parts List (continued)		
Part Number	Description	Quantity
HA7010A01	CAPACITOR RETENTION CLAMP, 6.562 LONG	1.000 EA
MJ1000A75	GREASE, POLYREX EM EXXON	0.050 LB
MG1000Y03	WILKO 689.710 GOLD PAINT SUPER E	0.022 GA
HA3101A25	THRUBOLT 1/4-20 X 11.000 OHIO ROD	4.000 EA
SP5064A01	MODEL 36 TYPE LC STATIONARY SWITCH LEAD	1.000 EA
LB1125C02	SUPER-E (STOCK CTN LABEL SUPER-E WITH FL	1.000 EA
LC0001A01	CONN LABEL / WARNING LABEL (LC0001 / LB1	1.000 EA
LB1357	ENERGY GUIDE LABEL (BOX LABEL)	1.000 SH
NP2116L	ALUM SUPER-E UL CSA CC	1.000 EA
36PA1001	PACKAGING GROUP	1.000 EA

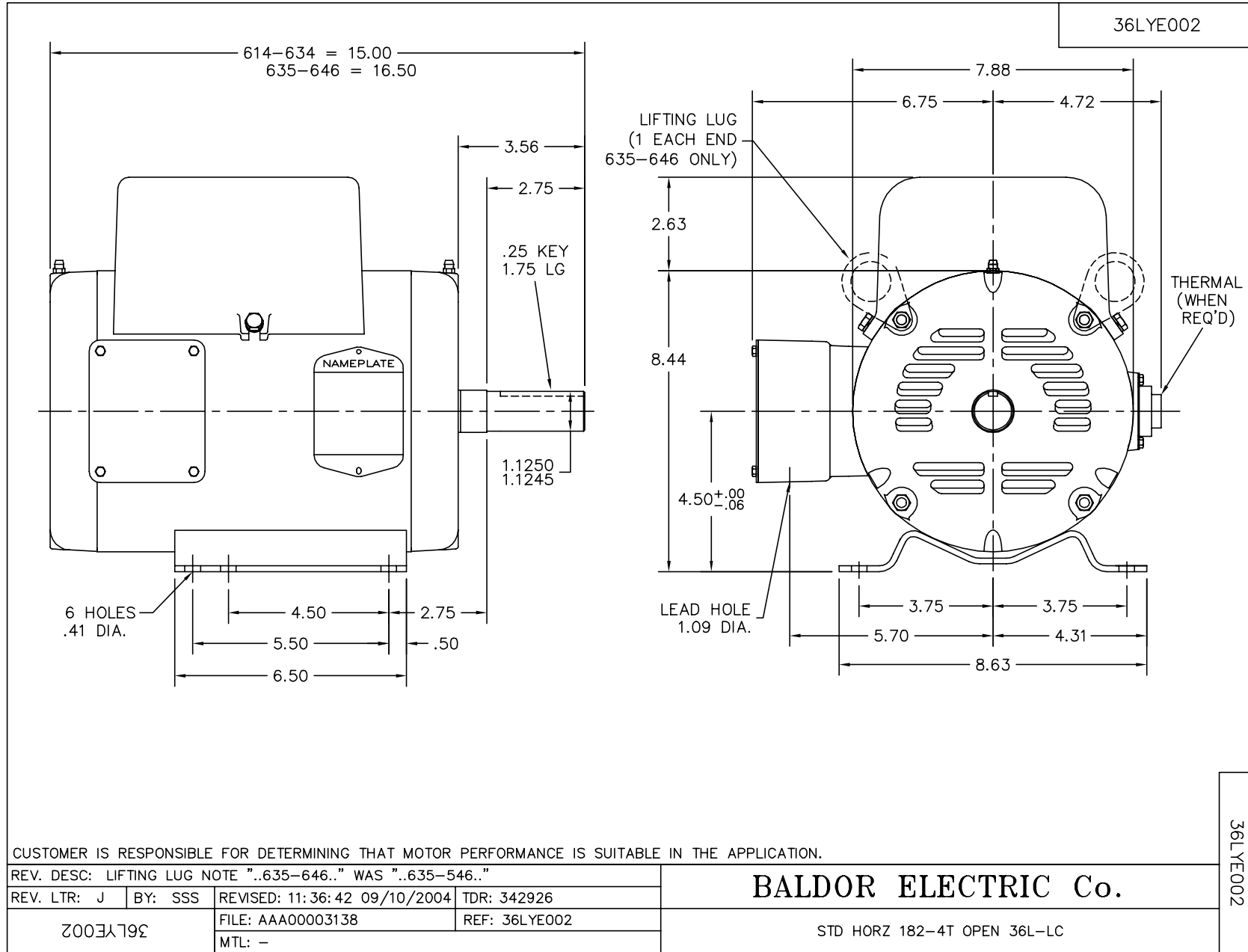
**Performance Data at 230V, 60Hz, 3.0HP (Typical performance - Not guaranteed values)**

General Characteristics			
Full Load Torque:	4.56 LB-FT	Start Configuration:	DOL
No-Load Current:	1.46 Amps	Break-Down Torque:	22.1 LB-FT
Line-line Res. @ 25°C.:	0.74602 Ohms A Ph / 0.85786 Ohms B Ph	Pull-Up Torque:	6.56 LB-FT
Temp. Rise @ Rated Load:	32 C	Locked-Rotor Torque:	8.88 LB-FT
Temp. Rise @ S.F. Load:	39 C	Starting Current:	78.0 Amps

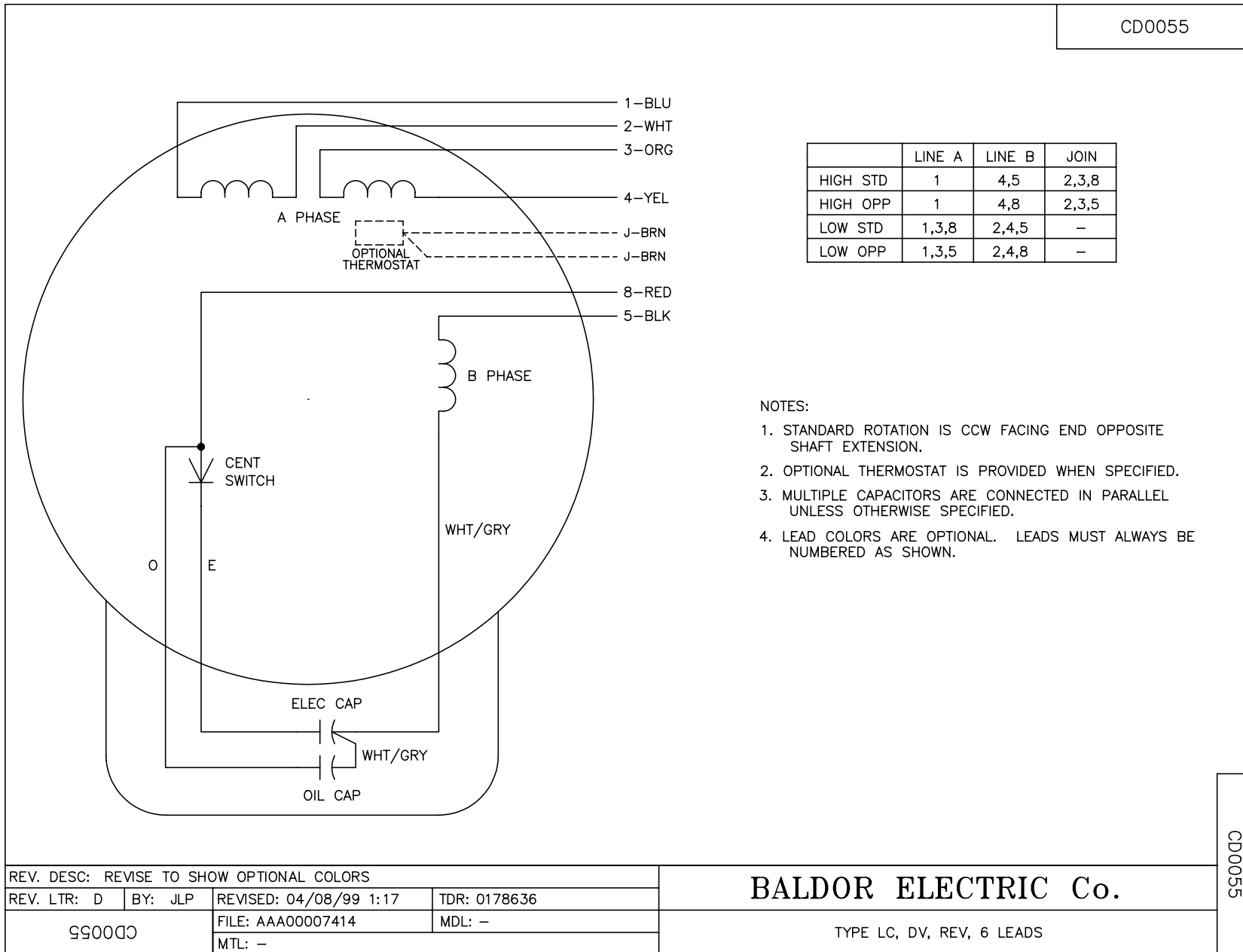
Load Characteristics							
% of Rated Load	25	50	75	100	125	150	S.F.
Power Factor:	98.0	98.0	98.0	98.0	97.0	96.0	97.0
Efficiency:	67.4	77.6	81.1	81.1	79.6	75.5	80.2
Speed:	3559.0	3533.3	3506.0	3471.6	3436.5	3370.6	3451.0
Line Amperes:	3.72	6.42	9.17	12.3	15.7	21.0	14.3

Performance Graph at 230V, 60Hz, 3.0HP Typical performance - Not guaranteed values





CD0055



REV. DESC: REVISE TO SHOW OPTIONAL COLORS			
REV. LTR: D	BY: JLP	REVISED: 04/08/99 1:17	TDR: 0178636
990000		FILE: AAA00007414	MDL: -
		MTL: -	

**BALDOR ELECTRIC Co.**

TYPE LC, DV, REV, 6 LEADS

CD0055