

BALDOR® • RELIANCE

Product Information Packet

EL3501

.33HP, 1740RPM, 1PH, 60HZ, 56, 3418LC, TEFC, F1

Copyright © All product information within this document is subject to Baldor Electric Company copyright © protection, unless otherwise noted.

Part Detail							
Revision:	AA	Status:	PRD/A	Change #:		Proprietary:	No
Type:	AC	Prod. Type:	3418LC	Elec. Spec:	34WGX028	CD Diagram:	
Enclosure:	TEFC	Mfg Plant:		Mech. Spec:	34G375	Layout:	
Frame:	56	Mounting:	F1	Poles:	04	Created Date:	
Base:	RG	Rotation:	R	Insulation:	F	Eff. Date:	03-30-2012
Leads:	6#18	Literature:		Elec. Diagram:		Replaced By:	

Nameplate NP2117L							
CAT.NO.	EL3501						
SPEC.	34G375X28G1						
HP	.33						
VOLTS	115/230						
AMP	3.2/1.6						
RPM	1740						
FRAME	56	HZ	60	PH	1		
SER.F.	1.35	CODE	J	DES	-	CL	F
NEMA-NOM-EFF	77	PF	88				
RATING	40C AMB-CONT						
CC				USABLE AT 208V			
DE	6203	ODE	6203				
ENCL	TEFC	SN					
	SFA 4.2/2.1						

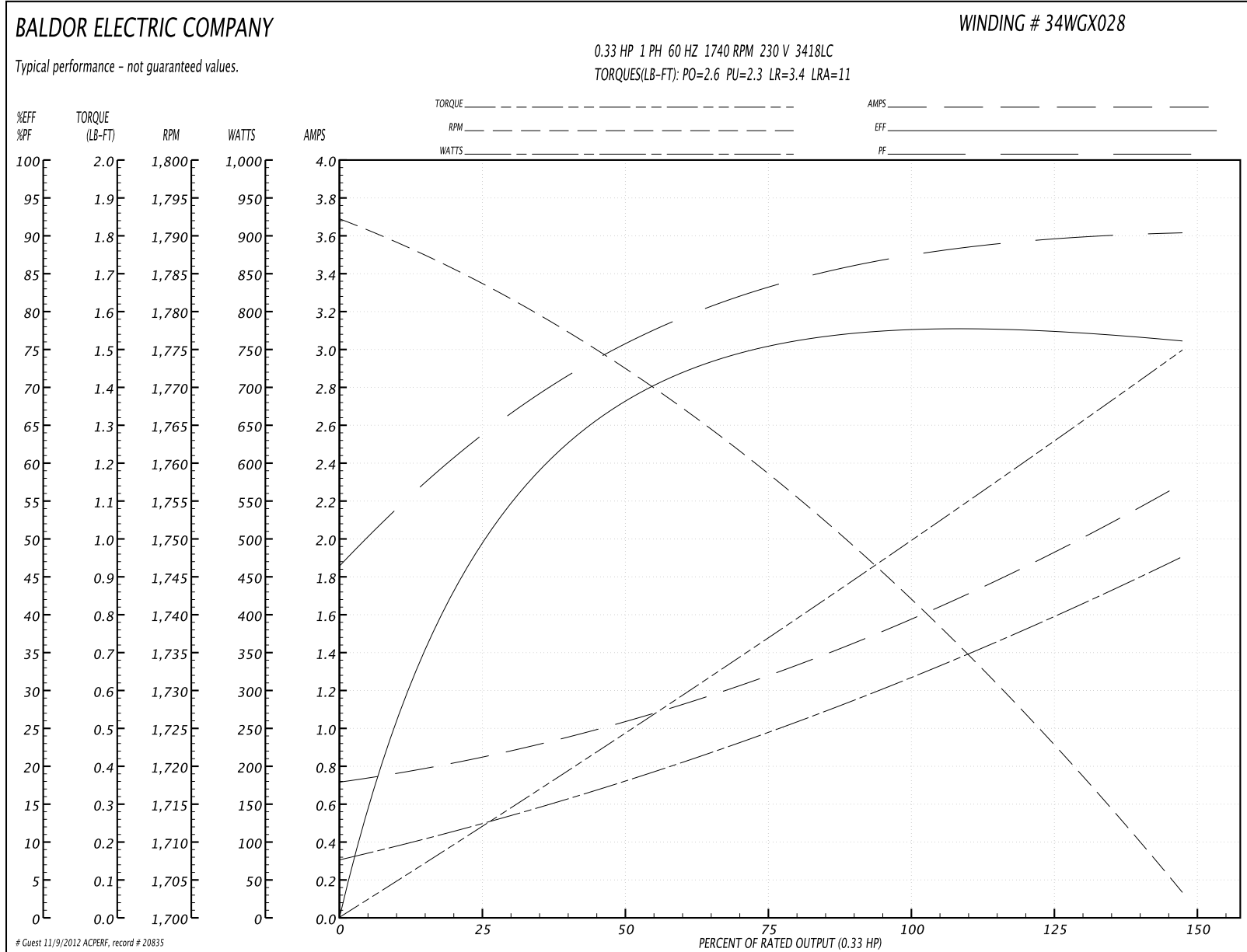
Parts List		
Part Number	Description	Quantity
SA006944	SA 34G375X28G1	1.000 EA
RA003391	RA 34G375X28G1	1.000 EA
OC3016F12SP	CYL OIL CAP 16MFD/370V	1.000 EA
EC1145A02	ELEC CAP 115V 1.4 X 3.3 X	1.000 EA
NS2512A01	INSULATOR, CONDUIT BOX X	1.000 EA
34CB3002A	CB CAST W/.88 DIA HOLE	1.000 EA
34GS1029A01	GASKET, CONDUIT BOX	1.000 EA
51XB1016A07	10-16 X 7/16 HXWSSLD SERTYB	2.000 EA
11XW1032G06	10-32 X .38, TAPTITE II, HEX WSHR SLTD U	1.000 EA
51XW0832A07	8-32 X .44, TAPTITE II, HEX WSHR SLTD SE	3.000 EA
34EP3102A01SP	FR ENDPLATE, MACH	1.000 EA
34CB3801	CAPACITOR BOX, DIE CAST	1.000 EA
34GS3002	GASKET, CAPACITOR BOX	1.000 EA
51XB1214A08	12-14 X 1/2HX WS SL SR TYBX	2.000 EA
HW5100A03SP	WAVY WASHER (W1543-017)	1.000 EA
34EP3102A02SP	FR/PU ENDPLATE, MACH	1.000 EA
XY1032A02	10-32 HEX NUT DIRECTIONAL SERRATION	4.000 EA
34FN3002A01SP	EXTERNAL FAN, PLASTIC, .637/.639 HUB W/	1.000 EA
34FH4002A01	IEC FH NO GREASER	1.000 EA
51XW1032A06	10-32 X .38, TAPTITE II, HEX WSHR SLTD S	3.000 EA
34CB4517	CB LID 4 MTG HOLES .22 DIA STAMPED, FOR	1.000 EA
34GS1031A01	GASKET, FLAT CONDUIT BOX LID (LEXIDE)	1.000 EA
51XW0832A07	8-32 X .44, TAPTITE II, HEX WSHR SLTD SE	4.000 EA
HW2501D13SP	KEY, 3/16 SQ X 1.375	1.000 EA

Parts List (continued)		
Part Number	Description	Quantity
HA7000A04	KEY RETAINER 0.625 DIA SHAFTS	1.000 EA
34GS5003A01	FOAM SLEEVE, ID = 2 1/16" X 4 3/8"	1.000 EA
10XF0440S02	04-40 X 1/8 TYPE F HEX HD STAINLESS STIC	2.000 EA
SP5056A18	MODEL 34 TYPE LC STATIONARY SWITCH WITH	1.000 EA
HA3100A44	THRUBOLT 10-32 X 8.000	4.000 EA
MG1000Y03	WILKO 689.710 GOLD PAINT SUPER E	0.014 GA
LB5040	INSTRUCTION TAG, AC & DC	1.000 EA
LB1125C02	SUPER-E (STOCK CTN LABEL SUPER-E WITH FL	1.000 EA
LC0001A01	CONN LABEL / WARNING LABEL (LC0001 / LB1	1.000 EA
NP2117L	SS SUPER-E UL CSA CC	1.000 EA
34PA1005	PACKING GROUP, BALDOR	1.000 EA

Accessories		
Part Number	Description	Multiplier
34-171	C FACE KIT	A8

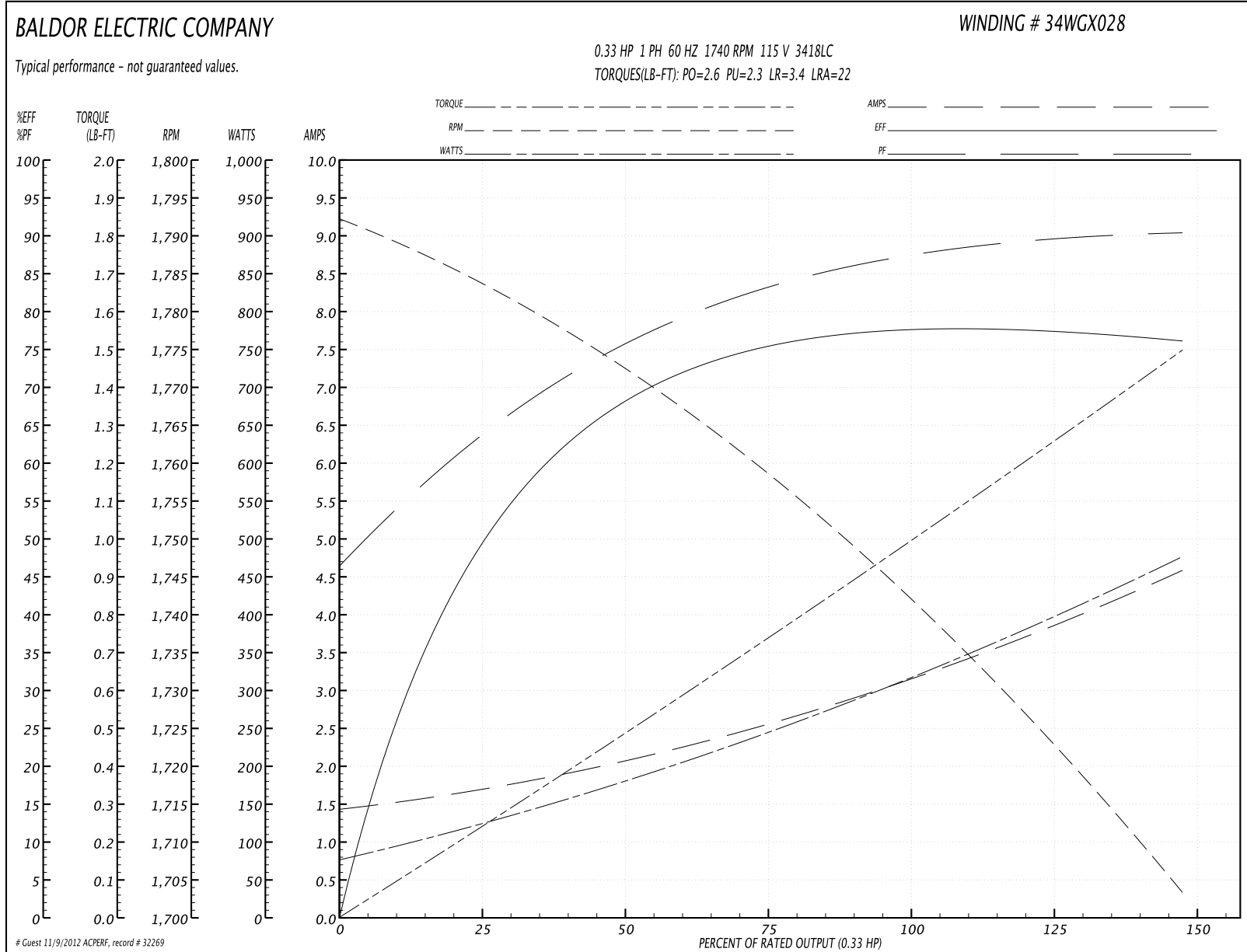
Performance Data at 230V, 60Hz, 0.33HP (Typical performance - Not guaranteed values)							
General Characteristics							
Full Load Torque:	1.0 LB-FT			Start Configuration:	DOL		
No-Load Current:	0.7 Amps			Break-Down Torque:	2.6 LB-FT		
Line-line Res. @ 25°C.:	7.34 Ohms A Ph / 5.89 Ohms B Ph			Pull-Up Torque:	2.3 LB-FT		
Temp. Rise @ Rated Load:	31 C			Locked-Rotor Torque:	3.4 LB-FT		
Temp. Rise @ S.F. Load:	37 C			Starting Current:	11.0 Amps		
Load Characteristics							
% of Rated Load	25	50	75	100	125	150	S.F.
Power Factor:	60.0	80.0	83.0	87.0	90.0	90.0	91.0
Efficiency:	50.6	68.6	75.5	77.3	77.7	76.1	77.9
Speed:	1782.0	1772.0	1759.0	1741.0	1724.0	1703.0	1717.0
Line Amperes:	0.9	1.0	1.3	1.6	1.9	2.3	2.1

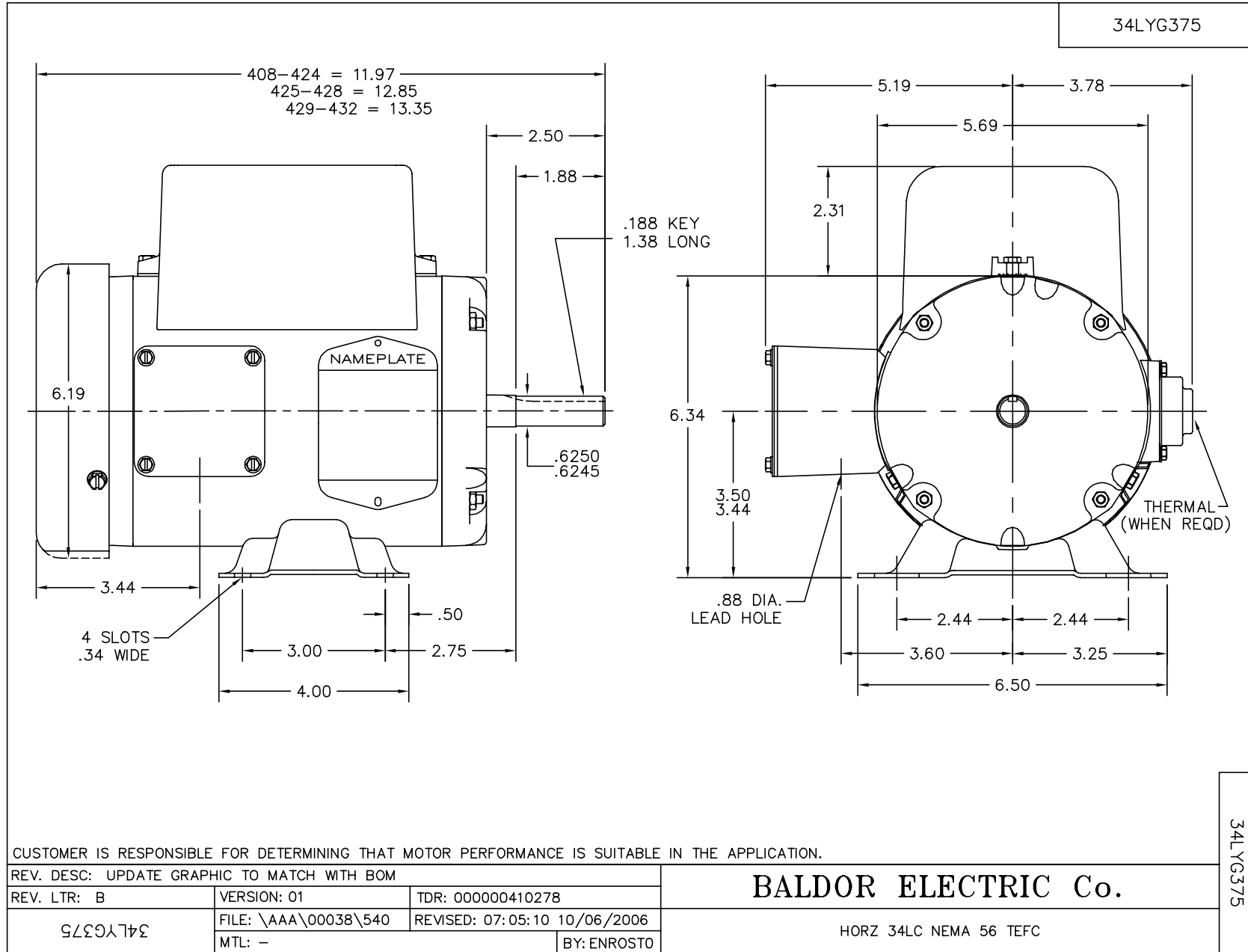
Performance Graph at 230V, 60Hz, 0.33HP Typical performance - Not guaranteed values



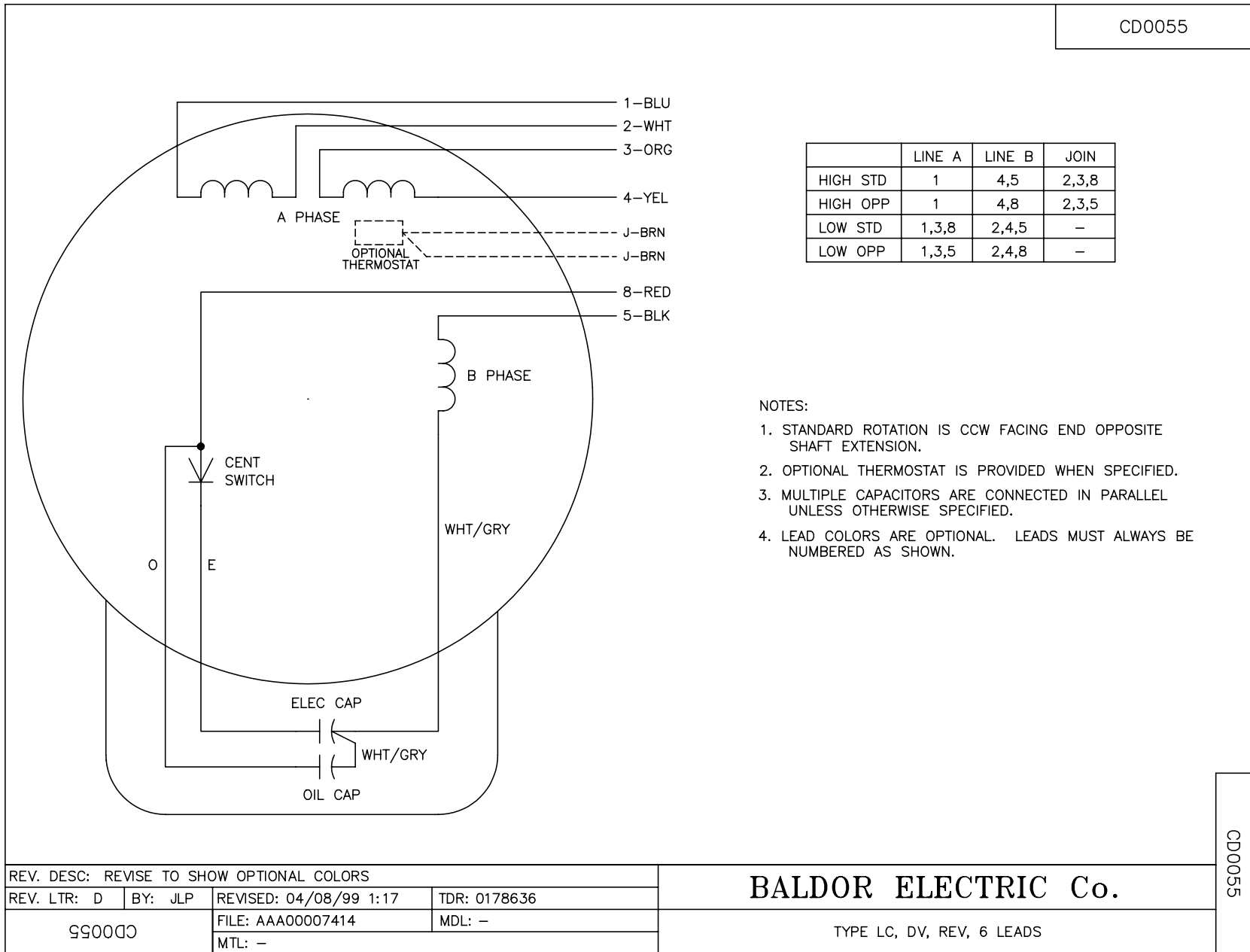
Performance Data at 115V, 60Hz, 0.33HP (Typical performance - Not guaranteed values)							
General Characteristics							
Full Load Torque:	1.0 LB-FT			Start Configuration:	DOL		
No-Load Current:	1.4 Amps			Break-Down Torque:	2.6 LB-FT		
Line-line Res. @ 25°C.:	1.75 Ohms A Ph / 5.76 Ohms B Ph			Pull-Up Torque:	2.3 LB-FT		
Temp. Rise @ Rated Load:	31 C			Locked-Rotor Torque:	3.4 LB-FT		
Temp. Rise @ S.F. Load:	41 C			Starting Current:	22.0 Amps		
Load Characteristics							
% of Rated Load	25	50	75	100	125	150	S.F.
Power Factor:	60.0	80.0	83.0	87.0	90.0	90.0	90.0
Efficiency:	50.6	68.8	75.6	77.3	77.7	76.1	77.1
Speed:	1782.0	1772.0	1759.0	1741.0	1724.0	1703.0	1716.0
Line Amperes:	1.8	2.0	2.6	3.2	3.8	4.6	4.12

Performance Graph at 115V, 60Hz, 0.33HP Typical performance - Not guaranteed values





CD0055



REV. DESC: REVISE TO SHOW OPTIONAL COLORS			
REV. LTR: D	BY: JLP	REVISED: 04/08/99 1:17	TDR: 0178636
990055		FILE: AAA00007414	MDL: -
		MTL: -	

BALDOR ELECTRIC Co.

TYPE LC, DV, REV, 6 LEADS

CD0055