

# **BALDOR® • RELIANCE**

## **Product Information Packet**

### **EL3506**

**.75HP,3450RPM,1PH,60HZ,56,3424LC,TEFC,F1**

Copyright © All product information within this document is subject to Baldor Electric Company copyright © protection, unless otherwise noted.

Part Detail									
Revision:	E	Status:	PRD/A	Change #:		Proprietary:	No		
Type:	AC	Prod. Type:	3424LC	Elec. Spec:	34WGS432	CD Diagram:			
Enclosure:	TEFC	Mfg Plant:		Mech. Spec:	34G375	Layout:			
Frame:	56	Mounting:	F1	Poles:	02	Created Date:	11-10-2008		
Base:	RG	Rotation:	R	Insulation:	B	Eff. Date:	03-20-2012		
Leads:	6#18	Literature:		Elec. Diagram:		Replaced By:			
Nameplate NP2116L									
CAT.NO.	EL3506								
SPEC.	34G375S432G1								
HP	.75								
VOLTS	115/230								
AMP	7.8/3.9								
RPM	3450								
FRAME	56	HZ	60			PH	1		
SER.F.	1.25	CODE	K			DES	N	CL	B
NEMA-NOM-EFF	72	PF	86						
RATING	40C AMB-CONT								
CC					USABLE AT 208V				
DE	6203	ODE	6203						
ENCL	TEFC	SN							
	SFA 9.2/4.6								

Parts List		
Part Number	Description	Quantity
SA177265	SA 34G375S432G1	1.000 EA
RA165308	RA 34G375S432G1	1.000 EA
OC3030F11SP	CYL OIL CAP 30MFD/370V	1.000 EA
EC1400A03SP	ELEC CAP, 400-480 MFD, 125V, 1.81D X 3.	1.000 EA
S/P107-000-001	SUPER E PROC'S-FS & WS PLTS-POLYREX EM G	1.000 EA
NS2512A01	INSULATOR, CONDUIT BOX X	1.000 EA
34CB3002A	CB CAST W/.88 DIA HOLE	1.000 EA
34GS1029A01	GASKET, CONDUIT BOX	1.000 EA
51XB1016A07	10-16 X 7/16 HXWSSLD SERTYB	2.000 EA
11XW1032G06	10-32 X .38, TAPTITE II, HEX WSHR SLTD U	1.000 EA
51XW0832A07	8-32 X .44, TAPTITE II, HEX WSHR SLTD SE	3.000 EA
34EP3102A01SP	FR ENDPLATE, MACH	1.000 EA
34CB3801	CAPACITOR BOX, DIE CAST	1.000 EA
34GS3002	GASKET, CAPACITOR BOX	1.000 EA
51XB1214A08	12-14 X 1/2HX WS SL SR TYBX	2.000 EA
HW5100A03SP	WAVY WASHER (W1543-017)	1.000 EA
34EP3102A02SP	FR/PU ENDPLATE, MACH	1.000 EA
XY1032A02	10-32 HEX NUT DIRECTIONAL SERRATION	4.000 EA
34FN3002A01SP	EXTERNAL FAN, PLASTIC, .637/.639 HUB W/	1.000 EA
34FH4002A01	IEC FH NO GREASER	1.000 EA
51XW1032A06	10-32 X .38, TAPTITE II, HEX WSHR SLTD S	3.000 EA
34CB4517	CB LID 4 MTG HOLES .22 DIA STAMPED, FOR	1.000 EA
34GS1031A01	GASKET, FLAT CONDUIT BOX LID (LEXIDE)	1.000 EA
51XW0832A07	8-32 X .44, TAPTITE II, HEX WSHR SLTD SE	4.000 EA

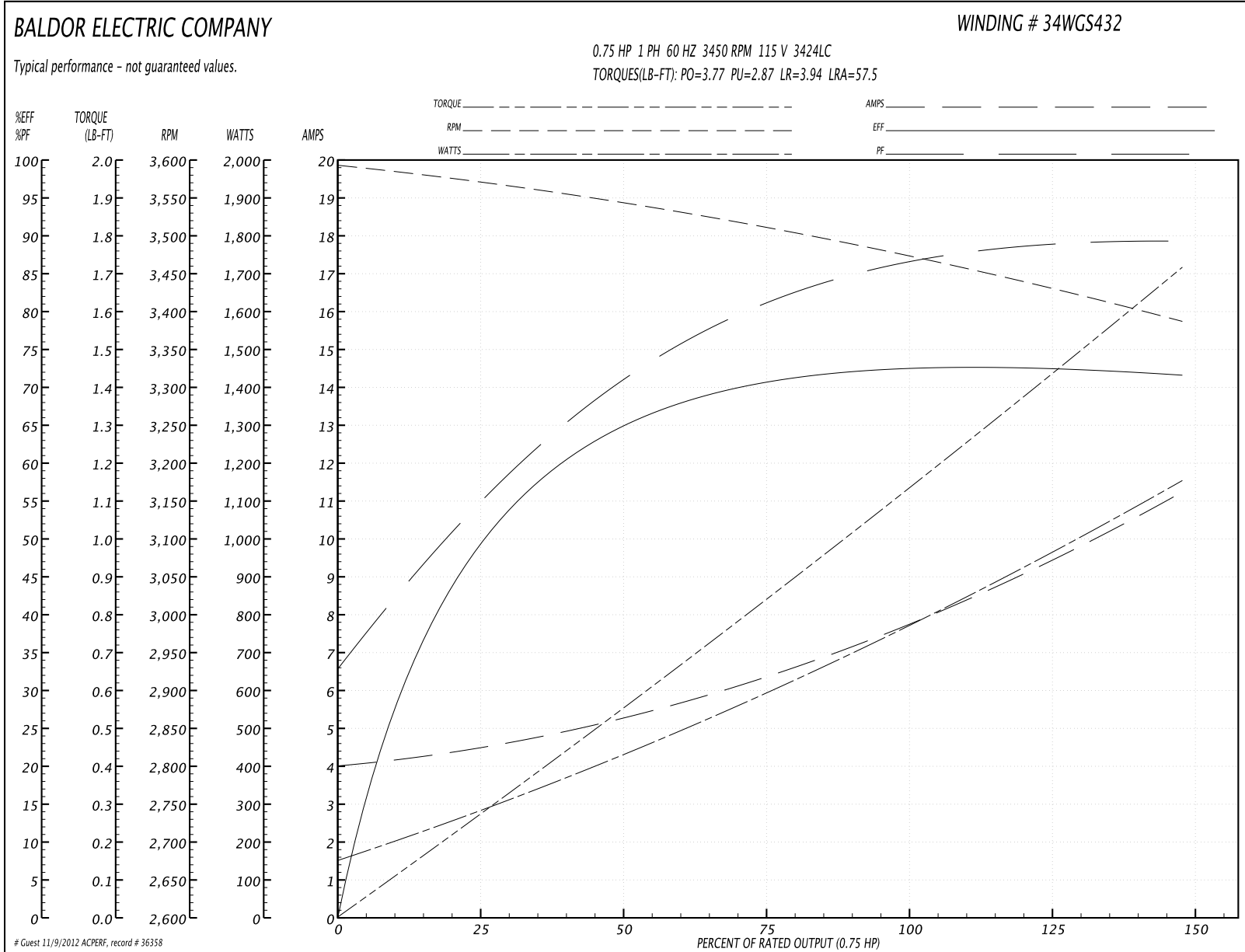
Parts List (continued)		
Part Number	Description	Quantity
HW2501D13SP	KEY, 3/16 SQ X 1.375	1.000 EA
HA7000A04	KEY RETAINER 0.625 DIA SHAFTS	1.000 EA
34GS5003A01	FOAM SLEEVE, ID = 2 1/16" X 4 3/8"	1.000 EA
10XF0440S02	04-40 X 1/8 TYPE F HEX HD STAINLESS STIC	2.000 EA
SP5056A18	MODEL 34 TYPE LC STATIONARY SWITCH WITH	1.000 EA
HA3100A44	THRUBOLT 10-32 X 8.000	4.000 EA
MG1000Y03	WILKO 689.710 GOLD PAINT SUPER E	0.014 GA
LB5040	INSTRUCTION TAG, AC & DC	1.000 EA
LB1125C02	SUPER-E (STOCK CTN LABEL SUPER-E WITH FL	1.000 EA
LC0001A01	CONN LABEL / WARNING LABEL (LC0001 / LB1	1.000 EA
NP2116L	ALUM SUPER-E UL CSA CC	1.000 EA
34PA1005	PACKING GROUP, BALDOR	1.000 EA

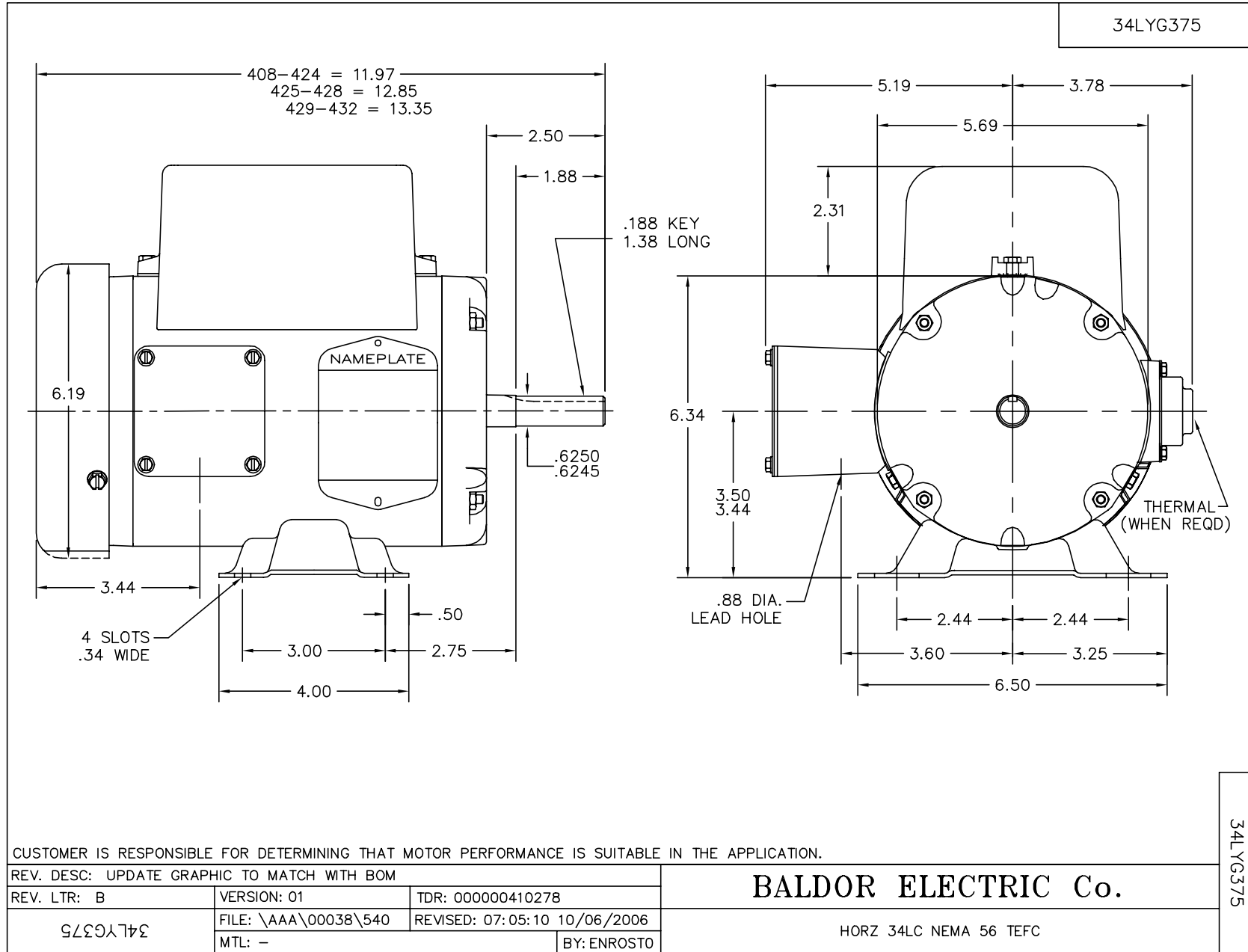
**Performance Data at 115V, 60Hz, 0.75HP (Typical performance - Not guaranteed values)**

General Characteristics			
Full Load Torque:	1.15 LB-FT	Start Configuration:	DOL
No-Load Current:	4.01 Amps	Break-Down Torque:	3.77 LB-FT
Line-line Res. @ 25°C.:	0.612 Ohms A Ph / 2.38 Ohms B Ph	Pull-Up Torque:	2.87 LB-FT
Temp. Rise @ Rated Load:	60 C	Locked-Rotor Torque:	3.94 LB-FT
Temp. Rise @ S.F. Load:	70 C	Starting Current:	57.5 Amps

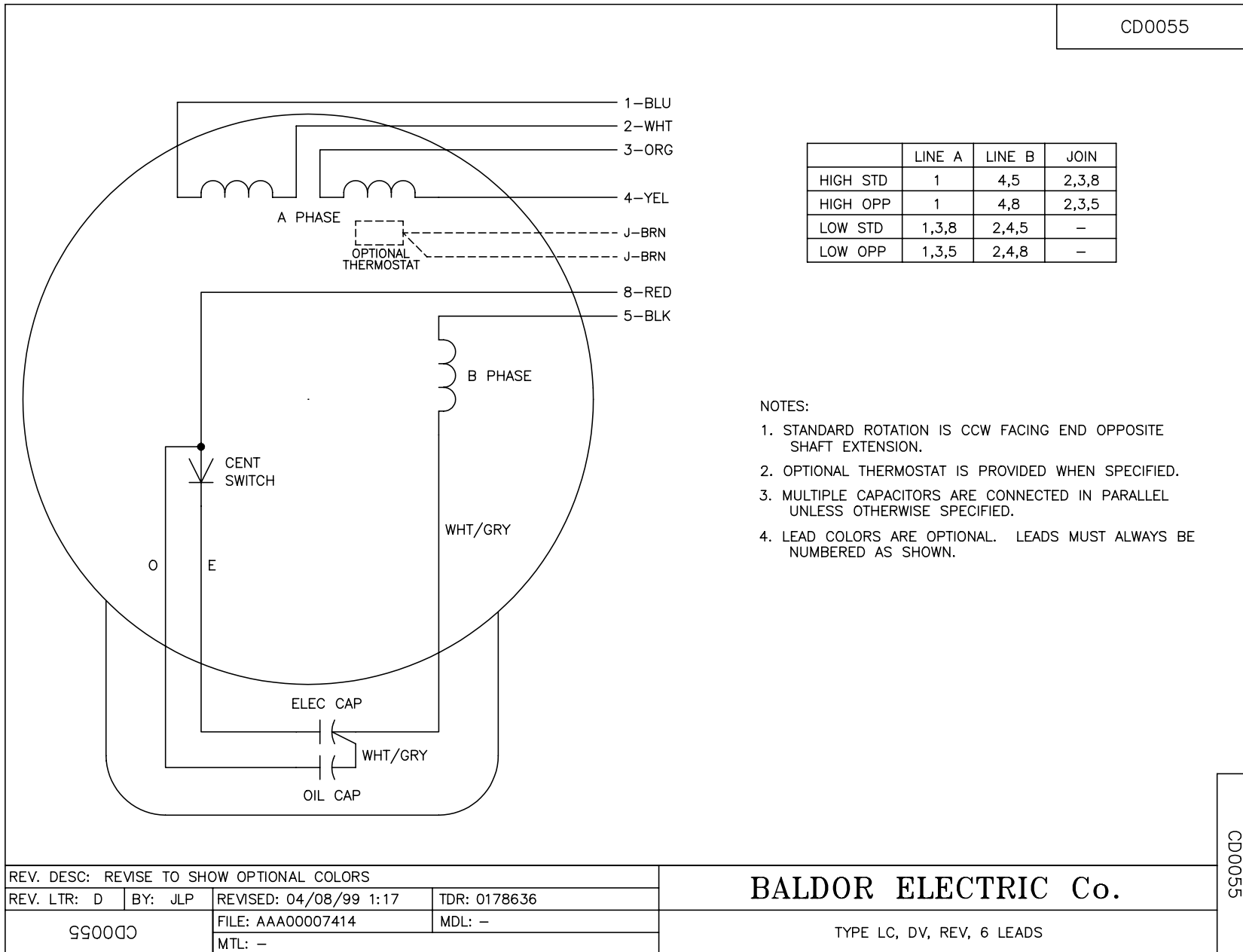
Load Characteristics							
% of Rated Load	25	50	75	100	125	150	S.F.
Power Factor:	56.0	72.0	81.0	86.0	89.0	89.0	89.0
Efficiency:	50.1	64.9	70.4	73.1	73.0	71.3	73.0
Speed:	3565.0	3540.0	3508.0	3475.0	3435.0	3383.0	3435.0
Line Amperes:	4.49	5.34	6.5	7.84	9.31	11.3	9.31

Performance Graph at 115V, 60Hz, 0.75HP Typical performance - Not guaranteed values





CD0055



REV. DESC: REVISE TO SHOW OPTIONAL COLORS			
REV. LTR: D	BY: JLP	REVISED: 04/08/99 1:17	TDR: 0178636
990055		FILE: AAA00007414	MDL: -
		MTL: -	

**BALDOR ELECTRIC Co.**

TYPE LC, DV, REV, 6 LEADS

CD0055