

BALDOR® • **RELIANCE**

Product Information Packet

EL3509

1HP,3450RPM,1PH,60HZ,56/56H,3520LC,TEFC

Copyright © All product information within this document is subject to Baldor Electric Company copyright © protection, unless otherwise noted.

Part Detail							
Revision:	K	Status:	PRD/A	Change #:		Proprietary:	No
Type:	AC	Prod. Type:	3520LC	Elec. Spec:	35WGM131	CD Diagram:	
Enclosure:	TEFC	Mfg Plant:		Mech. Spec:	35J385	Layout:	
Frame:	56/56H	Mounting:	F1	Poles:	02	Created Date:	11-07-2008
Base:	RG	Rotation:	R	Insulation:	B	Eff. Date:	03-20-2012
Leads:	4#16 A PH,2#18 B PH	Literature:		Elec. Diagram:		Replaced By:	

Nameplate NP2116L							
CAT.NO.	EL3509						
SPEC.	35J385M131G1						
HP	1						
VOLTS	115/208-230						
AMP	9.4/5-4.7						
RPM	3450						
FRAME	56/56H	HZ	60	PH	1		
SER.F.	1.25	CODE	H	DES	N	CL	B
NEMA-NOM-EFF	74	PF	94				
RATING	40C AMB-CONT						
CC			USABLE AT 208V				
DE	6205	ODE	6203				
ENCL	TEFC	SN					
	SFA 11.6/6.9-6.8						

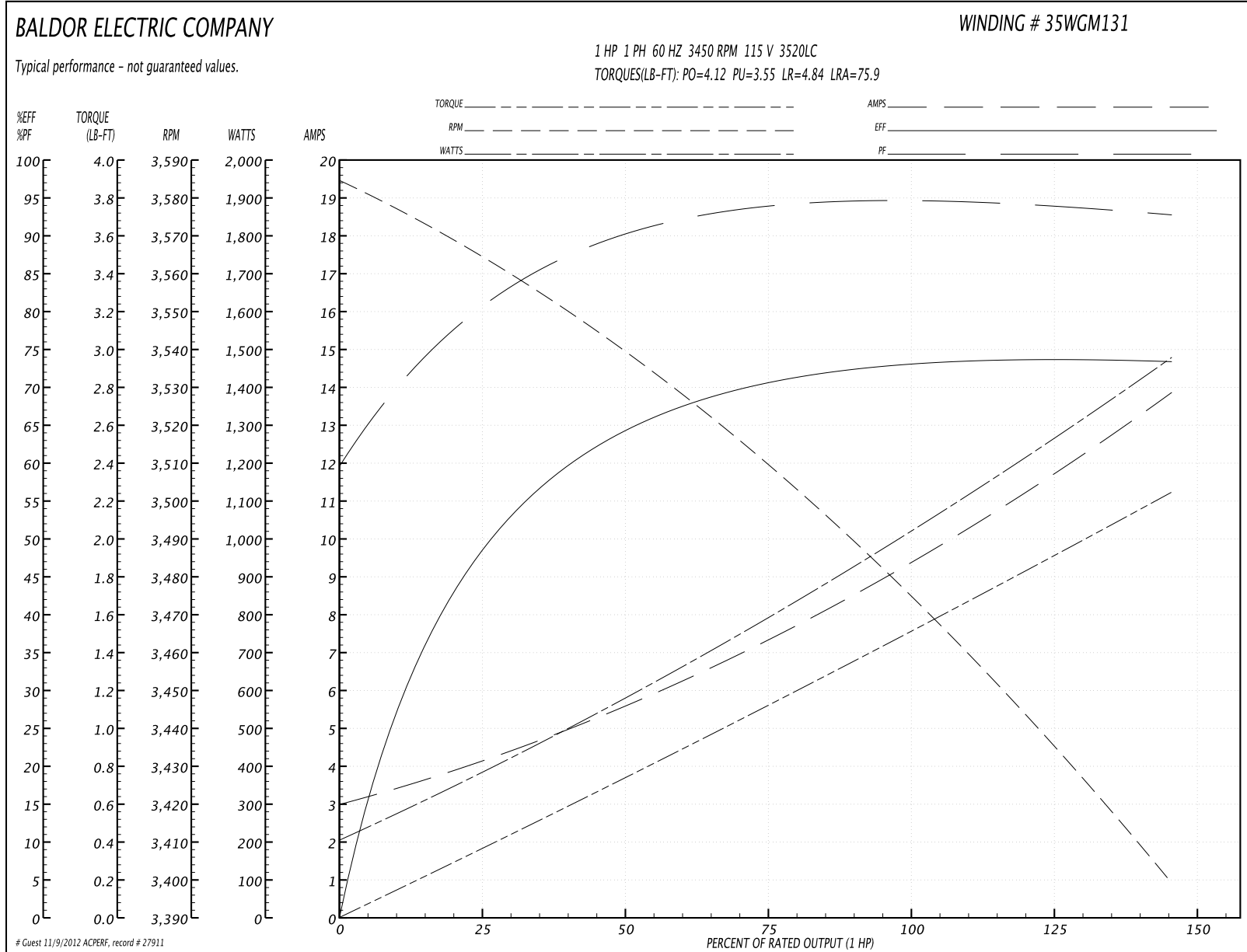
Parts List		
Part Number	Description	Quantity
SA177174	SA 35J385M131G1	1.000 EA
RA165223	RA 35J385M131G1	1.000 EA
OC3035F09SP	CYL OIL CAP 35MFD/370V	1.000 EA
EC1645A06SP	ELEC CAP, 645-774 MFD, 125V, 2.06D X 4.	1.000 EA
S/P107-000-001	SUPER E PROC'S-FS & WS PLTS-POLYREX EM G	1.000 EA
NS2512A01	INSULATOR, CONDUIT BOX X	1.000 EA
35CB3007	35 CB CASTING W/.88 DIA. LEAD HOLE	1.000 EA
36GS1000SP	GASKET-CONDUIT BOX, .06 THICK #SV-330 LE	1.000 EA
51XB1016A07	10-16 X 7/16 HXWSSLD SERTYB	2.000 EA
11XW1032G06	10-32 X .38, TAPTITE II, HEX WSHR SLTD U	1.000 EA
35EP3100M02	FREP TEFC 203 BRG W/O GRSR (RAISED FH MT	1.000 EA
51XW0832A07	8-32 X .44, TAPTITE II, HEX WSHR SLTD SE	2.000 EA
35CB3801SP	CAPACITOR COVER, CAST	1.000 EA
34GS3002	GASKET, CAPACITOR BOX	1.000 EA
HA7010	CAPACITOR RETENTION CLAMP	1.000 EA
51XB1016A08	10-16X 1/2HXWSSLD SERTYB	2.000 EA
NS2501A02	INSULATOR, CAPACITOR BOX	1.000 EA
HW5100A03SP	WAVY WASHER (W1543-017)	1.000 EA
35EP3101A02SP	STD PU ENDPLATE-ENCL-205 BRG LESS GREASE	1.000 EA
XY1032A02	10-32 HEX NUT DIRECTIONAL SERRATION	4.000 EA
51XB1214A16	12-14X1.00 HXWSSLD SERTYB	1.000 EA
35FH4005A32SP	IEC FH NO GRSR W/3 HOLES - W/AUTOPHERETI	1.000 EA
51XW1032A06	10-32 X .38, TAPTITE II, HEX WSHR SLTD S	3.000 EA
35CB4521	35 LIPPED CB LID (GALV & PHOSPH)	1.000 EA

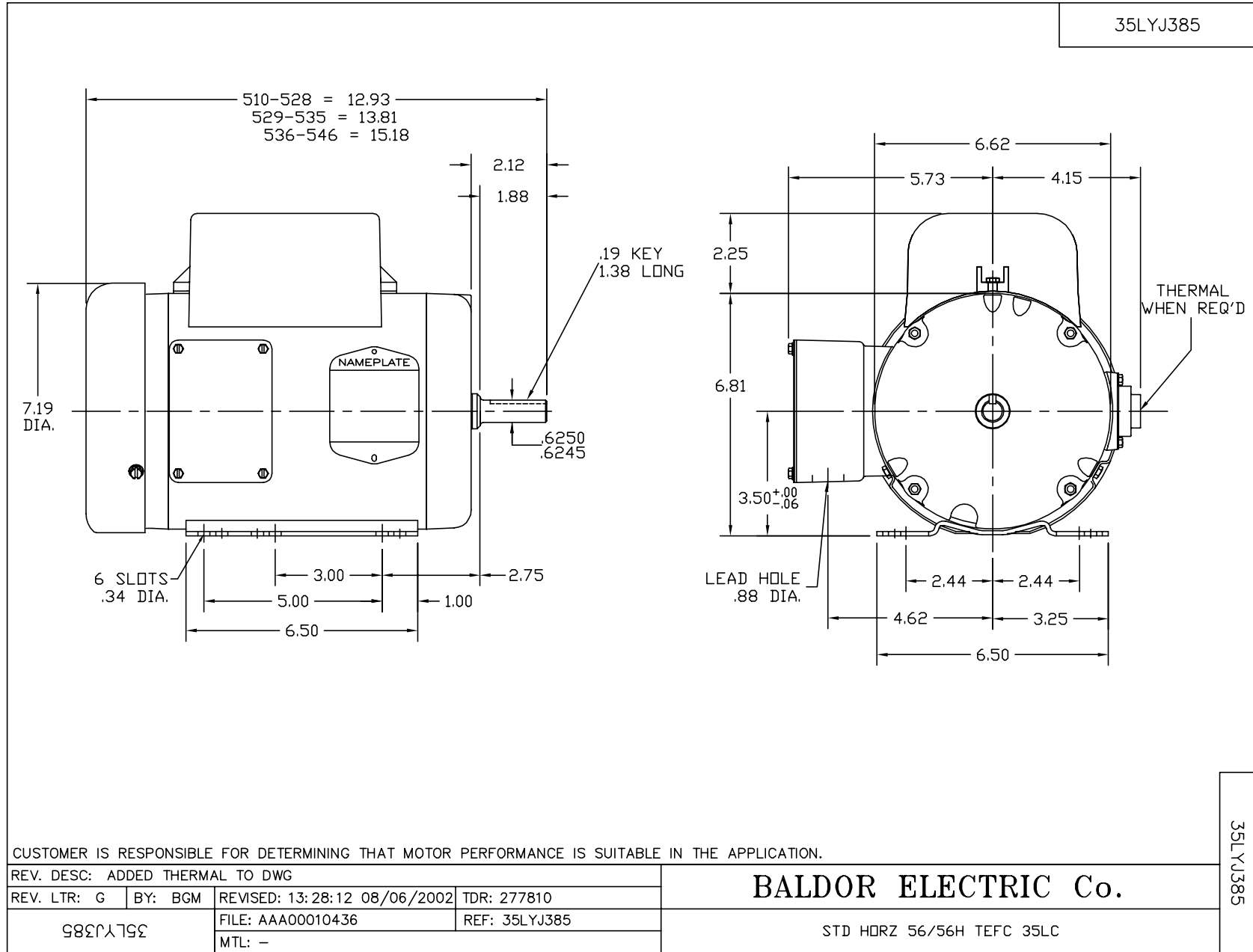
Parts List (continued)		
Part Number	Description	Quantity
35GS1030	35 GS FOR CB LID - LEXIDE	1.000 EA
51XW0832A07	8-32 X .44, TAPTITE II, HEX WSHR SLTD SE	4.000 EA
HW2501D13SP	KEY, 3/16 SQ X 1.375	1.000 EA
HA7000A04	KEY RETAINER 0.625 DIA SHAFTS	1.000 EA
85XU0407S04	4X1/4 U DRIVE PIN STAINLESS	2.000 EA
WD1000A15	3-520132-2 AMP FLAG (4M/RL NON-CANC/NON-	4.000 EA
MJ1000A75	GREASE, POLYREX EM EXXON	0.050 LB
35FN3002A05SP	EXFN, PLASTIC, 6.376 OD, .638 ID	1.000 EA
MG1000Y03	WILKO 689.710 GOLD PAINT SUPER E	0.017 GA
LC0001A01	CONN LABEL / WARNING LABEL (LC0001 / LB1	1.000 EA
NP2116L	ALUM SUPER-E UL CSA CC	1.000 EA
HA3100A18	THRUBOLT 10-32 X 9.250	4.000 EA
SP5056A52	MODEL 35 LC STATIONARY SWITCH LEAD ASSY	1.000 EA
LB1125C02	SUPER-E (STOCK CTN LABEL SUPER-E WITH FL	1.000 EA
35PA1066	PACKING GROUP COMBINED PRINT	1.000 EA

Performance Data at 115V, 60Hz, 1.0HP (Typical performance - Not guaranteed values)

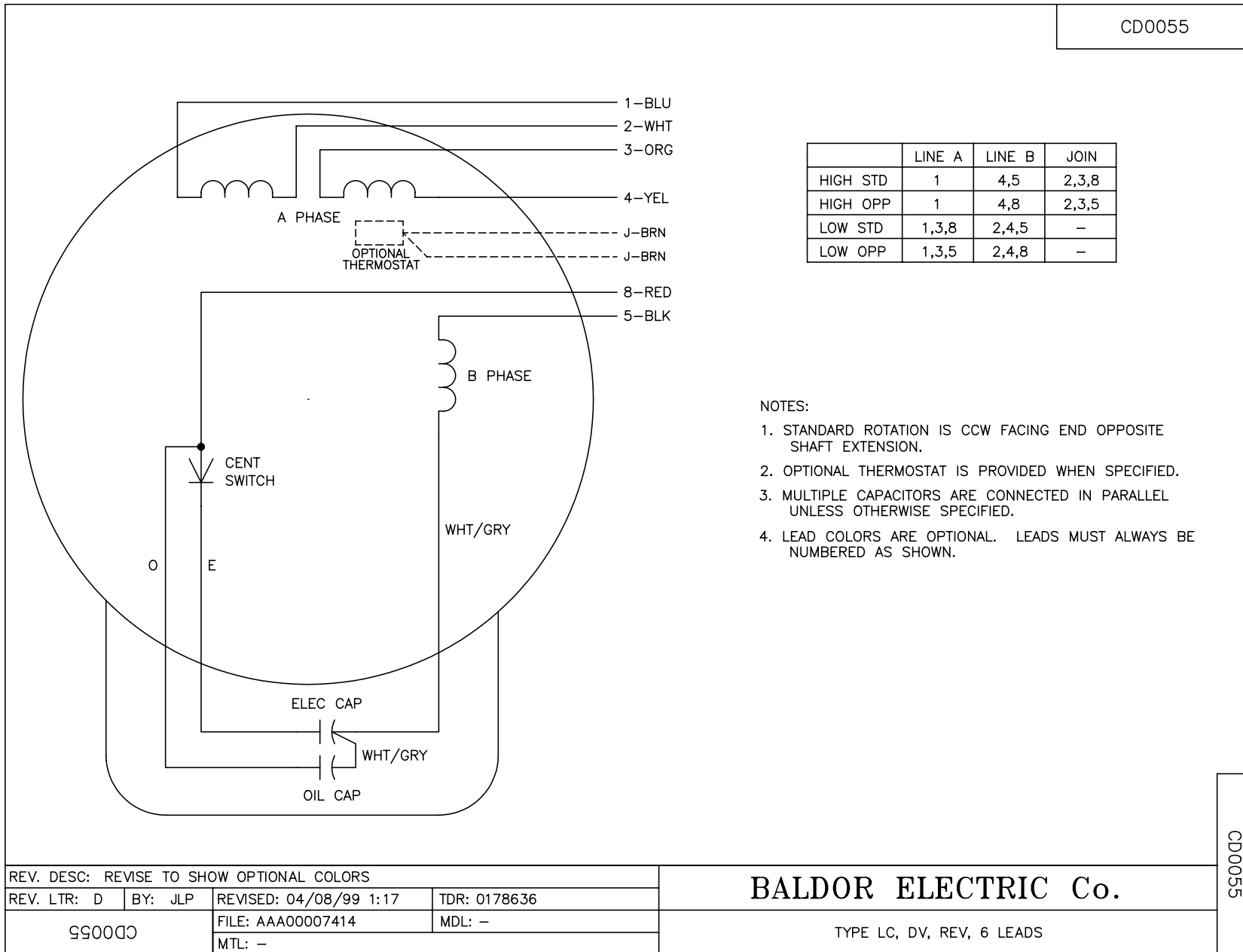
General Characteristics							
Full Load Torque:	1.5 LB-FT			Start Configuration:	DOL		
No-Load Current:	2.98 Amps			Break-Down Torque:	4.12 LB-FT		
Line-line Res. @ 25°C.:	0.517 Ohms A Ph / 1.77 Ohms B Ph			Pull-Up Torque:	3.55 LB-FT		
Temp. Rise @ Rated Load:	45 C			Locked-Rotor Torque:	4.84 LB-FT		
Temp. Rise @ S.F. Load:	55 C			Starting Current:	75.9 Amps		
Load Characteristics							
% of Rated Load	25	50	75	100	125	150	S.F.
Power Factor:	82.0	91.0	94.0	95.0	94.0	93.0	94.0
Efficiency:	48.3	63.9	70.8	73.3	74.0	73.1	74.0
Speed:	3563.0	3537.0	3509.0	3477.0	3441.0	3397.0	3441.0
Line Amperes:	4.16	5.66	7.39	9.29	11.5	13.9	11.5

Performance Graph at 115V, 60Hz, 1.0HP Typical performance - Not guaranteed values





CD0055



REV. DESC: REVISE TO SHOW OPTIONAL COLORS			
REV. LTR: D	BY: JLP	REVISED: 04/08/99 1:17	TDR: 0178636
990055		FILE: AAA00007414	MDL: -
		MTL: -	

BALDOR ELECTRIC Co.

TYPE LC, DV, REV, 6 LEADS

CD0055