

BALDOR® • *RELIANCE*

Product Information Packet

EL3510

1HP,1760RPM,1PH,60HZ,56H,3532LC,TEFC,F1

Copyright © All product information within this document is subject to Baldor Electric Company copyright © protection, unless otherwise noted.

Part Detail									
Revision:	AH	Status:	PRD/A	Change #:		Proprietary:	No		
Type:	AC	Prod. Type:	3532LC	Elec. Spec:	35WGS758	CD Diagram:			
Enclosure:	TEFC	Mfg Plant:		Mech. Spec:	35J385	Layout:			
Frame:	56H	Mounting:	F1	Poles:	04	Created Date:			
Base:	RG	Rotation:	R	Insulation:	F	Eff. Date:	01-10-2012		
Leads:	6#18	Literature:		Elec. Diagram:		Replaced By:			
Nameplate NP2116L									
CAT.NO.	EL3510								
SPEC.	35J385S758G1								
HP	1								
VOLTS	115/230								
AMP	8.5/4.25								
RPM	1760								
FRAME	56H	HZ	60			PH	1		
SER.F.	1.15	CODE	L			DES	L	CL	F
NEMA-NOM-EFF	82.5	PF	91						
RATING	40C AMB-CONT								
CC					USABLE AT 208V	4.6			
DE	6205	ODE	6203						
ENCL	TEFC	SN							
	SFA 9.4/4.7								

Parts List		
Part Number	Description	Quantity
SA025959	SA 35J385S758G1	1.000 EA
RA022009	RA 35J385S758G1	1.000 EA
OC3040F09SP	CYL OIL CAP 40MFD/370V	1.000 EA
EC1645A06SP	ELEC CAP, 645-774 MFD, 125V, 2.06D X 4.	1.000 EA
NS2512A01	INSULATOR, CONDUIT BOX X	1.000 EA
35CB3007	35 CB CASTING W/.88 DIA. LEAD HOLE	1.000 EA
36GS1000SP	GASKET-CONDUIT BOX, .06 THICK #SV-330 LE	1.000 EA
51XB1016A07	10-16 X 7/16 HXWSSLD SERTYB	2.000 EA
11XW1032G06	10-32 X .38, TAPTITE II, HEX WSHR SLTD U	1.000 EA
35EP3100M02	FREP TEFC 203 BRG W/O GRSR (RAISED FH MT	1.000 EA
51XW0832A07	8-32 X .44, TAPTITE II, HEX WSHR SLTD SE	2.000 EA
35CB3801SP	CAPACITOR COVER, CAST	1.000 EA
34GS3002	GASKET, CAPACITOR BOX	1.000 EA
HA7010	CAPACITOR RETENTION CLAMP	1.000 EA
51XB1016A08	10-16X 1/2HXWSSLD SERTYB	2.000 EA
NS2501A02	INSULATOR, CAPACITOR BOX	1.000 EA
HW5100A03SP	WAVY WASHER (W1543-017)	1.000 EA
35EP3101A02SP	STD PU ENDPLATE-ENCL-205 BRG LESS GREASE	1.000 EA
XY1032A02	10-32 HEX NUT DIRECTIONAL SERRATION	4.000 EA
35FN3002A05SP	EXFN, PLASTIC, 6.376 OD, .638 ID	1.000 EA
NP2116L	ALUM SUPER-E UL CSA CC	1.000 EA
51XB1214A16	12-14X1.00 HXWSSLD SERTYB	1.000 EA
35FH4005A32SP	IEC FH NO GRSR W/3 HOLES - W/AUTOPHERETI	1.000 EA
51XW1032A06	10-32 X .38, TAPTITE II, HEX WSHR SLTD S	3.000 EA

Parts List (continued)		
Part Number	Description	Quantity
35CB4521GX	CONDUIT BOX LID KIT	1.000 EA
51XW0832A07	8-32 X .44, TAPTITE II, HEX WSHR SLTD SE	4.000 EA
HW2501D13SP	KEY, 3/16 SQ X 1.375	1.000 EA
HA7000A04	KEY RETAINER 0.625 DIA SHAFTS	1.000 EA
85XU0407S04	4X1/4 U DRIVE PIN STAINLESS	2.000 EA
WD1000A15	3-520132-2 AMP FLAG (4M/RL NON-CANC/NON-	4.000 EA
MJ1000A75	GREASE, POLYREX EM EXXON	0.050 LB
HA3100A22	THRUBOLT 10-32 X 10.125	4.000 EA
SP5181A01	MODEL 35 LC TORQ STAT SWITCH LEAD ASSY	1.000 EA
MG1000Y03	WILKO 689.710 GOLD PAINT SUPER E	0.017 GA
LB1125C02	SUPER-E (STOCK CTN LABEL SUPER-E WITH FL	1.000 EA
LC0001A01	CONN LABEL / WARNING LABEL (LC0001 / LB1	1.000 EA
35PA1066	PACKING GROUP COMBINED PRINT	1.000 EA
LB1357	ENERGY GUIDE LABEL (BOX LABEL)	1.000 SH

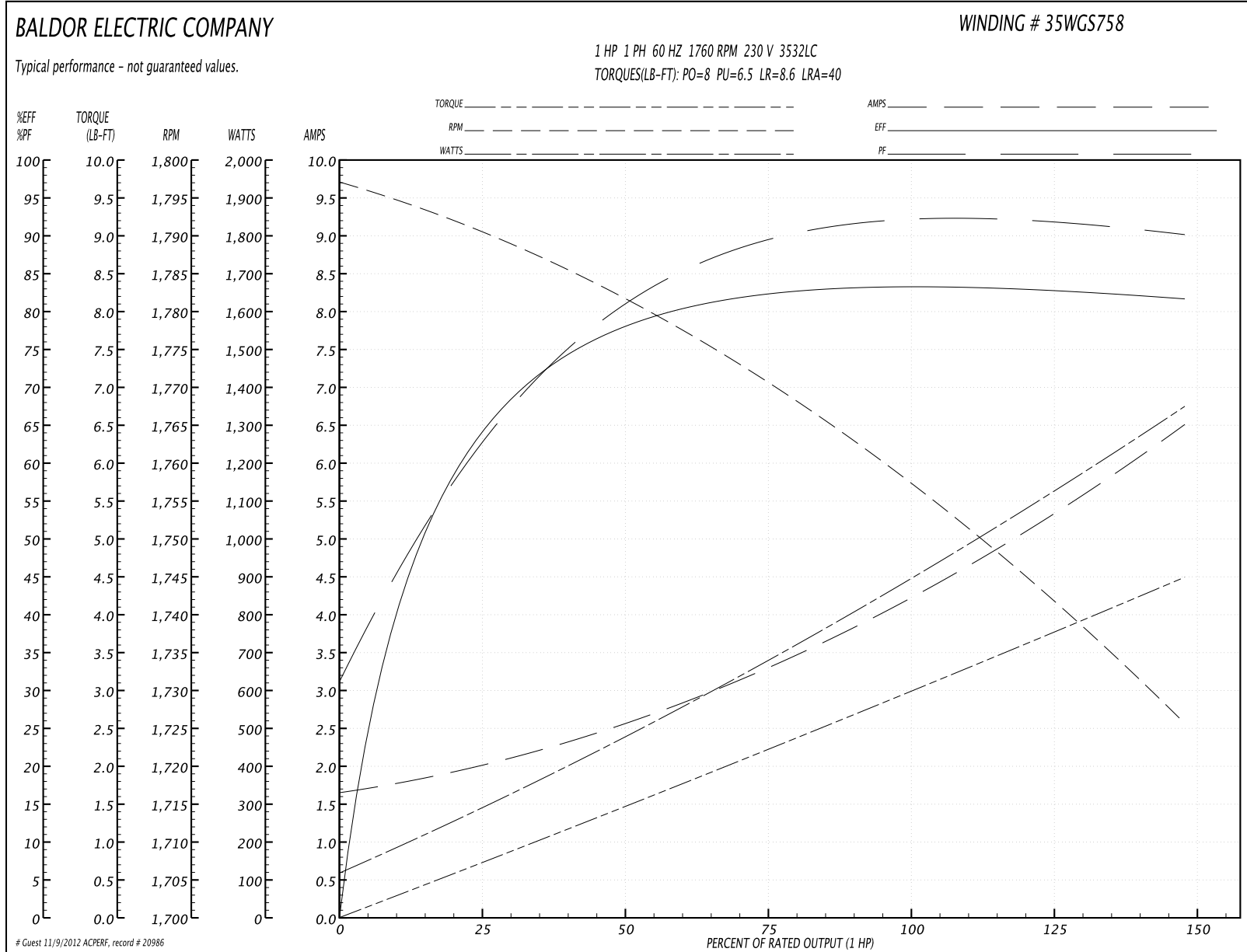
Accessories		
Part Number	Description	Multiplier
35-8762	C FACE KIT	A8
35EP1506A01SP	D-FLANGE KIT	A8

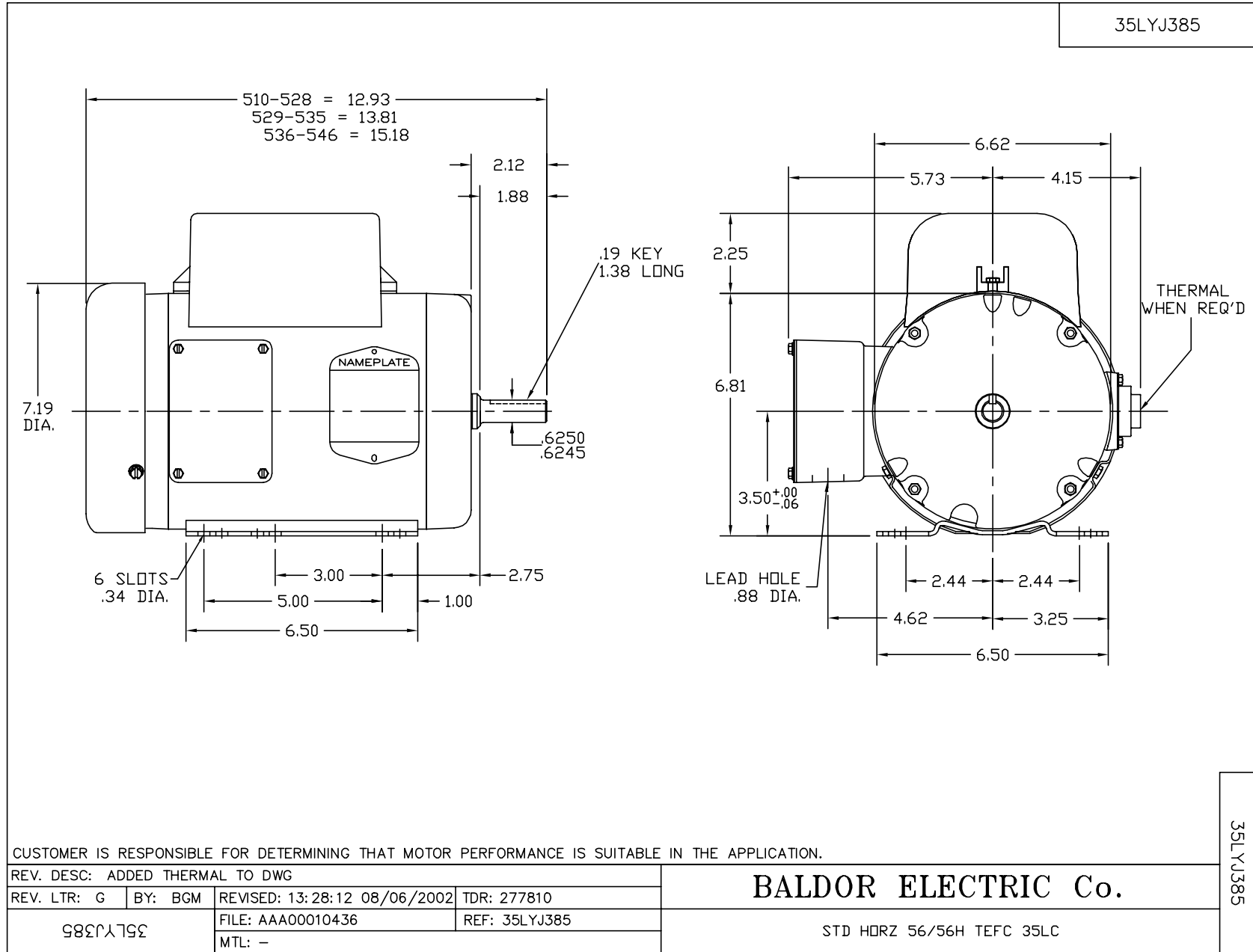
Performance Data at 230V, 60Hz, 1.0HP (Typical performance - Not guaranteed values)

General Characteristics			
Full Load Torque:	3.0 LB-FT	Start Configuration:	DOL
No-Load Current:	1.7 Amps	Break-Down Torque:	8.0 LB-FT
Line-line Res. @ 25°C.:	0.706 Ohms A Ph / 1.8 Ohms B Ph	Pull-Up Torque:	6.5 LB-FT
Temp. Rise @ Rated Load:	39 C	Locked-Rotor Torque:	8.6 LB-FT
Temp. Rise @ S.F. Load:	48 C	Starting Current:	40.0 Amps

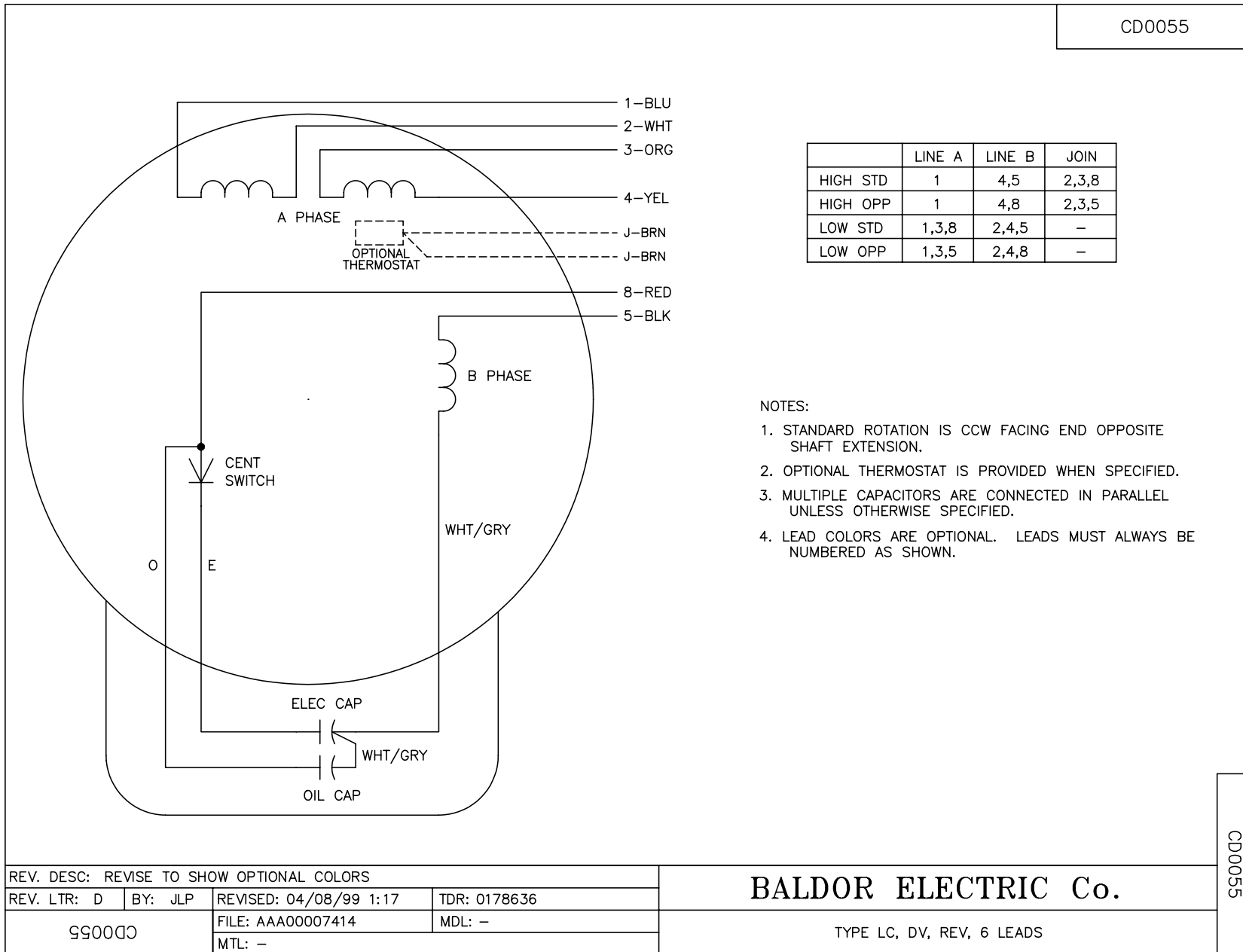
Load Characteristics							
% of Rated Load	25	50	75	100	125	150	S.F.
Power Factor:	65.0	81.0	88.0	91.0	93.0	94.0	92.0
Efficiency:	66.3	76.9	83.2	83.6	82.0	82.0	82.6
Speed:	1791.0	1781.0	1769.0	1758.0	1743.0	1725.0	1749.0
Line Amperes:	1.95	2.55	3.4	4.25	5.3	6.5	4.88

Performance Graph at 230V, 60Hz, 1.0HP Typical performance - Not guaranteed values





CD0055



REV. DESC: REVISE TO SHOW OPTIONAL COLORS			
REV. LTR: D	BY: JLP	REVISED: 04/08/99 1:17	TDR: 0178636
990055		FILE: AAA00007414	MDL: -
		MTL: -	

BALDOR ELECTRIC Co.

TYPE LC, DV, REV, 6 LEADS

CD0055