

# **BALDOR**® • **RELIANCE**

## **Product Information Packet**

# **EL3609T**

**3HP, 1755RPM, 1PH, 60HZ, 184T, 3640LC, TEFC, F1**

Copyright © All product information within this document is subject to Baldor Electric Company copyright © protection, unless otherwise noted.

Part Detail							
Revision:	AG	Status:	PRD/A	Change #:		Proprietary:	No
Type:	AC	Prod. Type:	3640LC	Elec. Spec:	36WGY528	CD Diagram:	
Enclosure:	TEFC	Mfg Plant:		Mech. Spec:	36E004	Layout:	
Frame:	184T	Mounting:	F1	Poles:	04	Created Date:	
Base:	RG	Rotation:	R	Insulation:	F	Eff. Date:	05-21-2012
Leads:	2#14 A PH,2#16 B PH	Literature:		Elec. Diagram:		Replaced By:	

**Nameplate NP2116L**

CAT.NO.	EL3609T						
SPEC.	36E004Y528E7						
HP	3						
VOLTS	230						
AMP	11.8						
RPM	1755						
FRAME	184T	HZ	60	PH	1		
SER.F.	1.15	CODE	H	DES	L	CL	F
NEMA-NOM-EFF	85.5	PF	96				
RATING	40C AMB-CONT						
CC			USABLE AT 208V				
DE	6206	ODE	6205				
ENCL	TEFC	SN					

Parts List		
Part Number	Description	Quantity
SA034404	SA 36E004Y528E7	1.000 EA
RA030432	RA 36E004Y528E7	1.000 EA
OC3035F09SP	CYL OIL CAP 35MFD/370V	1.000 EA
EC1130C04	ELEC CAP, 130-156 MFD, 250V, 1.81D X 4.	1.000 EA
EC1145C06SP	ELEC CAP 230V 2.0 X 4.3	1.000 EA
36CB3004	36 CB CASTING W/1.09 DIA LEAD HOLE @ 6:0	1.000 EA
36GS1000SP	GASKET-CONDUIT BOX, .06 THICK #SV-330 LE	1.000 EA
51XB1016A08	10-16X 1/2HXWSSLD SERTYB	2.000 EA
11XW1032G06	10-32 X .38, TAPTITE II, HEX WSHR SLTD U	1.000 EA
HW3001B01	003SS CUP WASHER, FOR #8 SCREW	1.000 EA
36EP3101A01SP	FR ENDPLATE, MACH	1.000 EA
HW4500A01	1641B(ALEMITE)400 UNIV, GREASE FITT	1.000 EA
13XT0832A07	8-32X7/16 TYP 23 PAN HD SLT DX	2.000 EA
36GS3000	GASKET, CAPACITOR COVER LEXIDE	1.000 EA
10XN2520A12	O1/4-20X 3/4 HEX HEAD CAP	2.000 EA
HW5100A05	WVY WSHR F/205 & 304 BRGS	1.000 EA
36EP3100A01SP	PU ENDPLATE, MACH	1.000 EA
HW4500A01	1641B(ALEMITE)400 UNIV, GREASE FITT	1.000 EA
XY2520A12	1/4-20 HEX NUT, DIRECTIONAL SERRATIONS	4.000 EA
51XB1214A16	12-14X1.00 HXWSSLD SERTYB	1.000 EA
51XW1032A06	10-32 X .38, TAPTITE II, HEX WSHR SLTD S	3.000 EA
36CB4516	36 LIPPED CB LID	1.000 EA
37GS1001SP	GASKET, CONDUIT BOX LID, .06 THICK LEXID	1.000 EA
51XW0832A07	8-32 X .44, TAPTITE II, HEX WSHR SLTD SE	4.000 EA

Parts List (continued)		
Part Number	Description	Quantity
HW2501E16	3KEY, 1/4 SQ X 1.750	1.000 EA
HA7000A02	KEY RETAINER RING, 1 1/8 DIA, 1 3/8 DIA	1.000 EA
85XU0407S04	4X1/4 U DRIVE PIN STAINLESS	2.000 EA
HA6362ZP	LIFTING LUG FOR 36 FRAME MOTORS.	2.000 EA
36CB3800SP	CAPACITOR COVER, CAST	1.000 EA
HA7010A01	CAPACITOR RETENTION CLAMP, 6.562 LONG	1.000 EA
MJ1000A75	GREASE, POLYREX EM EXXON	0.050 LB
36FN3000C01SP	EXFN, PLASTIC, 5.25 OD, .912 ID	1.000 EA
36FH4009A76	IEC FH W/GRSR,GRILL,DIMPLES, AUTOPHERETI	1.000 EA
LB1115	LABEL,LIFTING DEVICE	1.000 EA
HA3101A40	THRUBOLT 1/4-20 X 12.687	4.000 EA
WD1000A15	3-520132-2 AMP FLAG (4M/RL NON-CANC/NON-	6.000 EA
SP5064A01	MODEL 36 TYPE LC STATIONARY SWITCH LEAD	1.000 EA
MG1000Y03	WILKO 689.710 GOLD PAINT SUPER E	0.022 GA
LB1119	WARNING LABEL	1.000 EA
LB1125C02	SUPER-E (STOCK CTN LABEL SUPER-E WITH FL	1.000 EA
LC0017	CONN LABEL-1 PHASE-SINGLE VOLT-REV ROTNO	1.000 EA
NP2116L	ALUM SUPER-E UL CSA CC	1.000 EA
36PA1001	PACKAGING GROUP	1.000 EA
LB1357	ENERGY GUIDE LABEL (BOX LABEL)	1.000 SH

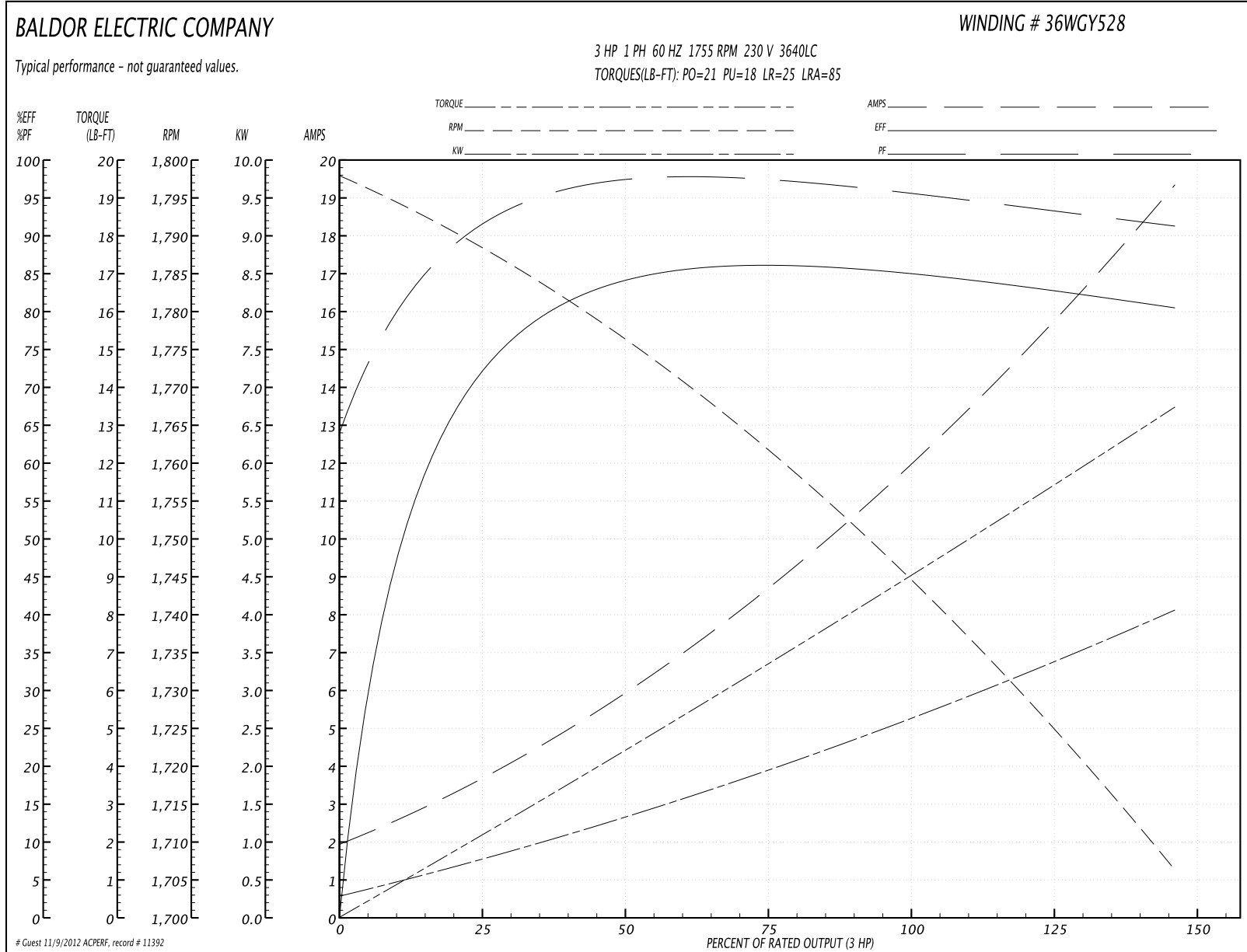
Accessories		
Part Number	Description	Multiplier
36-3301	C FACE KIT	A8
36EP1304A62SP	FLANGE MTD ENDPLATE 182-4TD -ENCL (LESS	A8

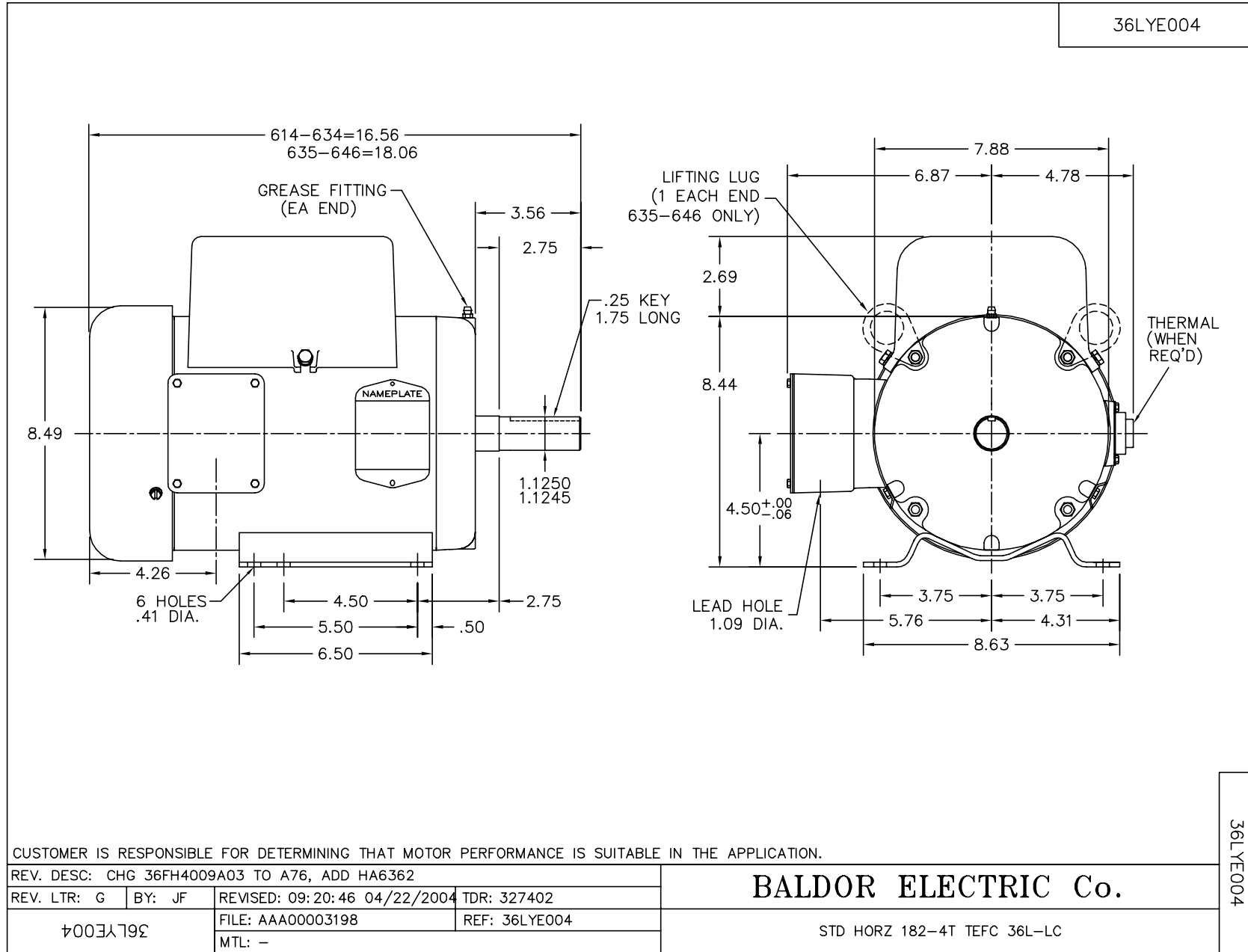
**Performance Data at 230V, 60Hz, 3.0HP (Typical performance - Not guaranteed values)**

General Characteristics			
Full Load Torque:	9.0 LB-FT	Start Configuration:	DOL
No-Load Current:	1.9 Amps	Break-Down Torque:	21.0 LB-FT
Line-line Res. @ 25°C.:	0.662 Ohms A Ph / 1.52 Ohms B Ph	Pull-Up Torque:	18.0 LB-FT
Temp. Rise @ Rated Load:	59 C	Locked-Rotor Torque:	25.0 LB-FT
Temp. Rise @ S.F. Load:	75 C	Starting Current:	85.0 Amps

Load Characteristics							
% of Rated Load	25	50	75	100	125	150	S.F.
Power Factor:	92.0	96.0	97.0	97.0	96.0	96.0	95.0
Efficiency:	71.0	83.1	85.9	85.7	83.6	80.0	84.4
Speed:	1787.0	1775.0	1762.0	1745.0	1728.0	1705.0	1735.0
Line Amperes:	3.7	6.1	8.9	11.8	15.3	19.5	14.1

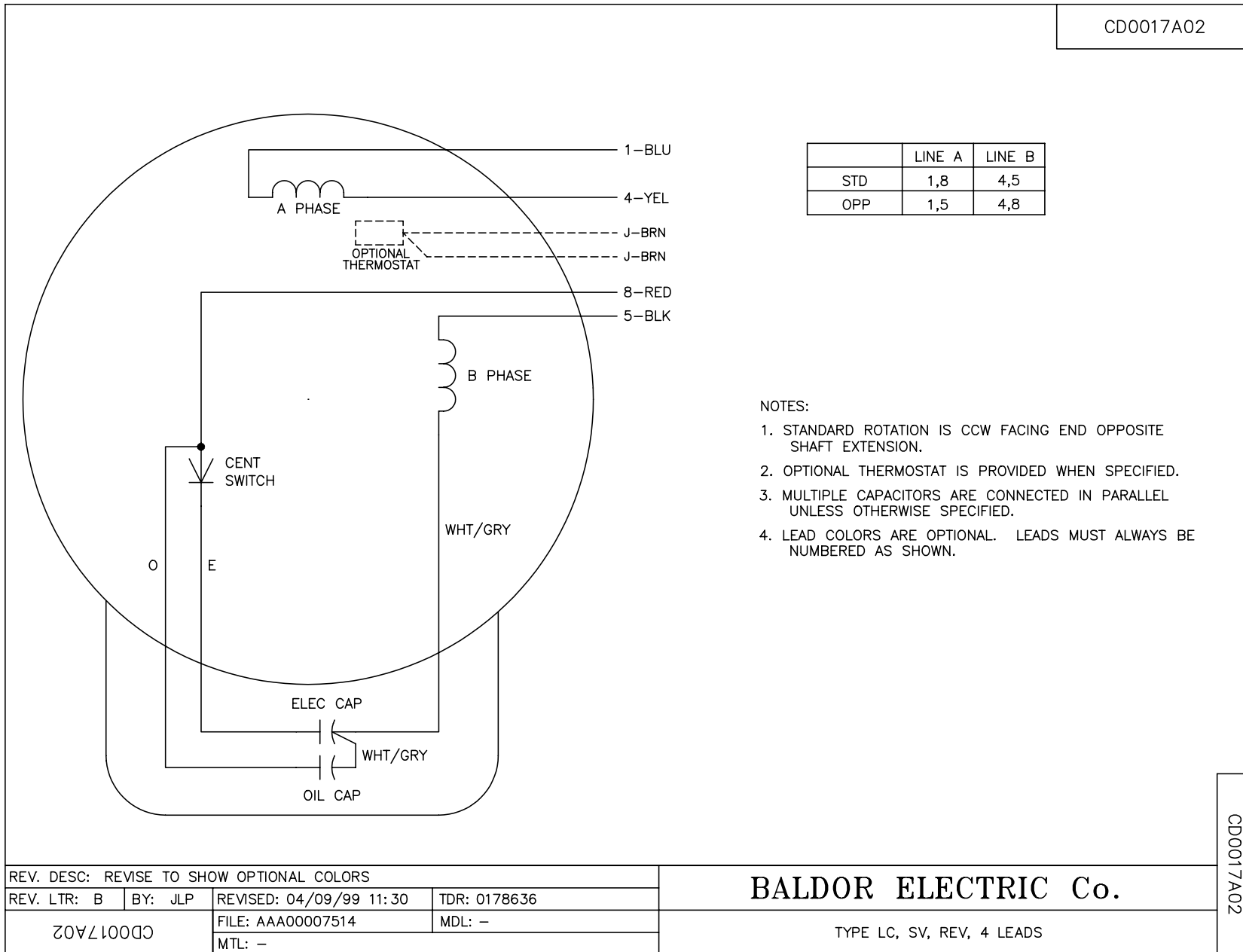
Performance Graph at 230V, 60Hz, 3.0HP Typical performance - Not guaranteed values







CD0017A02



REV. DESC: REVISE TO SHOW OPTIONAL COLORS			
REV. LTR: B	BY: JLP	REVISED: 04/09/99 11:30	TDR: 0178636
CD0017A02		FILE: AAA00007514	MDL: -
		MTL: -	

**BALDOR ELECTRIC Co.**

TYPE LC, SV, REV, 4 LEADS

CD0017A02