

BALDOR® • RELIANCE

Product Information Packet

WALKER INDUSTRIAL PRODUCTS, INC.

EM30006

.33HP,3450RPM,3PH,60HZ,48,3413M,ODP,F1,N

Part Detail							
Revision:	C	Status:	PRD/A	Change #:		Proprietary:	No
Type:	AC	Prod. Type:	3413M	Elec. Spec:	34WGR140	CD Diagram:	CD0005
Enclosure:	ODP	Mfg Plant:		Mech. Spec:	34B051	Layout:	34LYB051
Frame:	48	Mounting:	F1	Poles:	02	Created Date:	03-06-2014
Base:	RG	Rotation:	R	Insulation:	F	Eff. Date:	10-29-2015
Leads:	9#18					Replaced By:	
Literature:		Elec. Diagram:					

Nameplate NP3155L							
CAT.NO.	EM30006						
SPEC.	34B051R140G1						
HP	.33						
VOLTS	230/460						
AMP	1.2/.6						
RPM	3450						
FRAME	48	HZ	60	PH	3		
SER.F.	1.35	CODE	N	DES	B	CL	F
F.L. AVG. EFF.	69.5	PF	77				
RATING	40C AMB-CONT						
CC		USABLE AT 208V	1.5				
DE	6203	ODE	6203				
ENCL	ODP	SN					
	SFA 1.4/7						

AC Induction Motor Performance Data
Record # 44910 - Typical performance - not guaranteed values

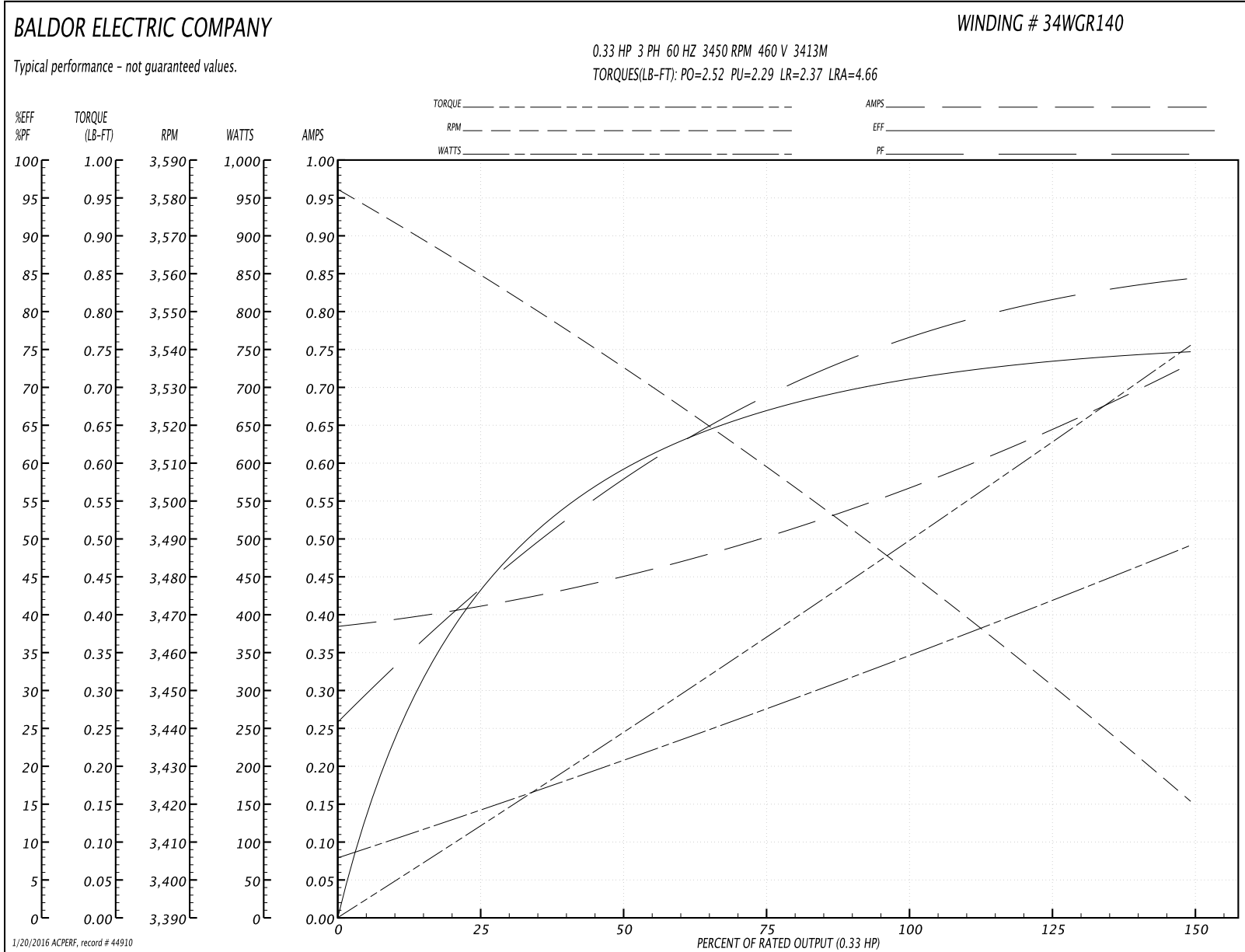
Winding: 34WGR140-R001	Type: 3413M	Enclosure: OPEN
-------------------------------	--------------------	------------------------

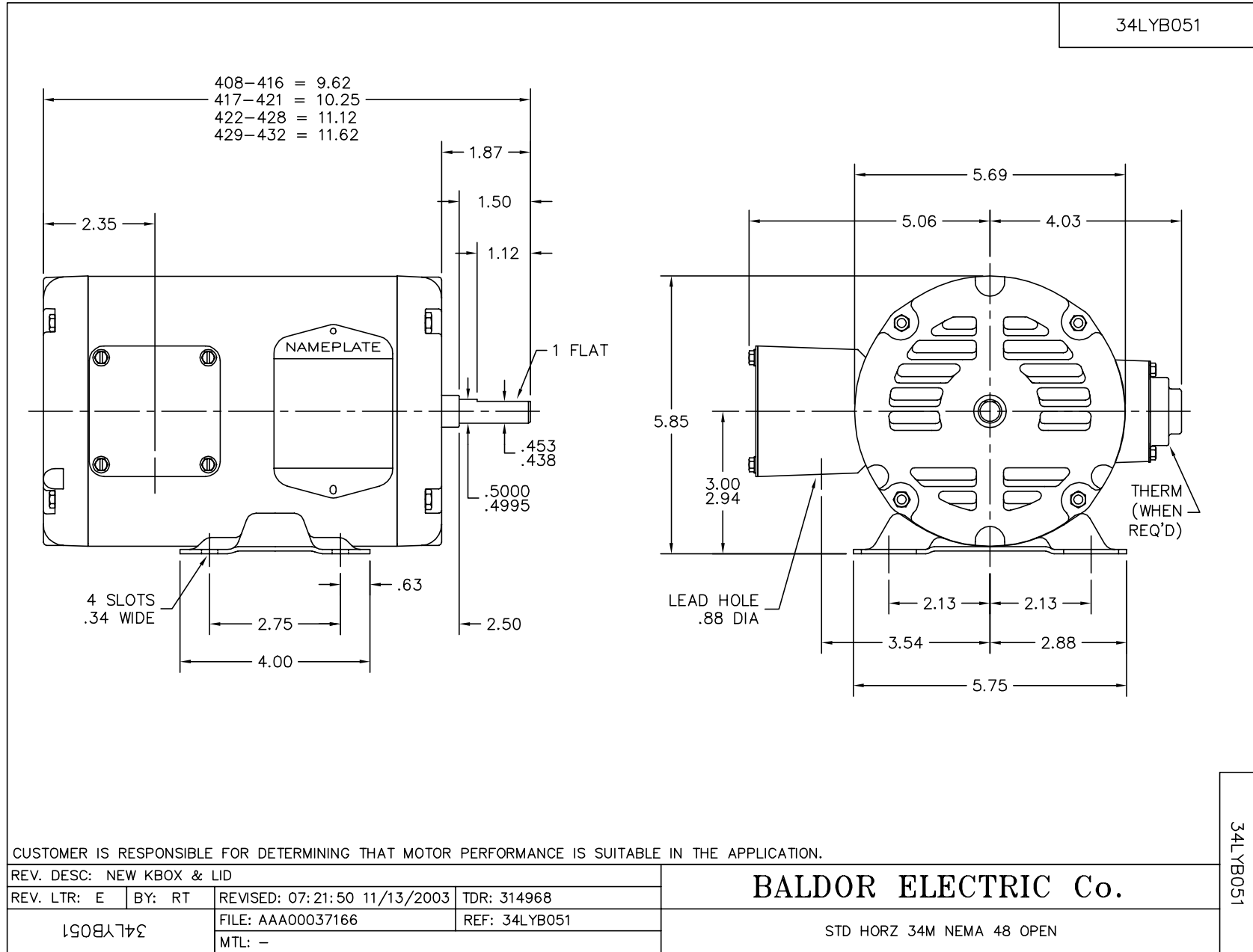
Nameplate Data				460 V, 60 Hz: High Voltage Connection	
Rated Output (HP)	.33			Full Load Torque	0.502 LB-FT
Volts	230/460			Start Configuration	direct on line
Full Load Amps	1.2/6			Breakdown Torque	2.52 LB-FT
R.P.M.	3450			Pull-up Torque	2.29 LB-FT
Hz	60	Phase	3	Locked-rotor Torque	2.37 LB-FT
NEMA Design Code	B	KVA Code	N	Starting Current	4.66 A
Service Factor (S.F.)	1.35			No-load Current	0.388 A
NEMA Nom. Eff.	69.5	Power Factor	77	Line-line Res. @ 25°C	42 Ω
Rating - Duty	40C AMB-CONT			Temp. Rise @ Rated Load	14°C
S.F. Amps	1.4/7			Temp. Rise @ S.F. Load	16°C
				Rotor inertia	0.0121 LB-FT ²

Load Characteristics 460 V, 60 Hz, 0.33 HP

% of Rated Load	25	50	75	100	125	150	S.F.
Power Factor	44	59	69	77	82	85	83
Efficiency	43.9	59.5	67.4	71.1	73.6	74.7	74
Speed	3558	3534	3508	3480	3452	3420	3439
Line amperes	0.408	0.448	0.51	0.572	0.645	0.73	0.679

Performance Graph at 460V, 60Hz, 0.33HP Typical performance - Not guaranteed values

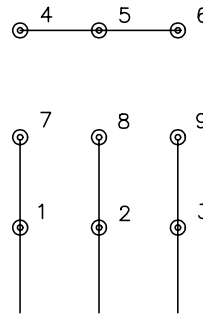




CD0005

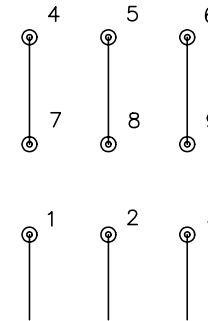


LOW VOLTAGE
(2Y)



LINE

HIGH VOLTAGE
(1Y)



LINE

NOTES:

1. INTERCHANGE ANY TWO LINE LEADS TO REVERSE ROTATION.
2. OPTIONAL THERMOSTATS ARE PROVIDED WHEN SPECIFIED.
3. ACTUAL NUMBER OF INTERNAL PARALLEL CIRCUITS MAY BE A MULTIPLE OF THOSE SHOWN ABOVE.
4. LEAD COLORS ARE OPTIONAL. LEADS MUST ALWAYS BE NUMBERED AS SHOWN.

REV. DESC: REVISE TO SHOW OPTIONAL COLORS			
REV. LTR: E	BY: JLP	REVISED: 01/19/99 10:15	TDR: 0171435
90000		FILE: AAA00005140	MDL: -
		MTL: -	

BALDOR ELECTRIC Co.

3PH, DV, 9 LEADS

CD0005