

BALDOR® • RELIANCE 

Product Information Packet

WALKER INDUSTRIAL PRODUCTS, INC.

EM3157T-57

2HP,1445RPM,3PH,50HZ,145T,3528M,OPEN,F1

| Part Detail | | | | | | | |
|-------------|---------|-------------|------------|-------------|--------|---------------|------------|
| Revision: | D | Status: | PRD/A | Change #: | | Proprietary: | No |
| Type: | AC | Elec. Spec: | 35WGN364 | CD Diagram: | CD0022 | Mfg Plant: | |
| Mech. Spec: | 35BB001 | Layout: | 35LYBB001 | Poles: | 04 | Created Date: | 12-22-2015 |
| Base: | RG | Eff. Date: | 08-21-2017 | Leads: | 6#18 | | |

| Specs | | | |
|---------------------------------|-------------------------|--------------------------------|-------------------|
| Catalog Number: | EM3157T-57 | Insulation Class: | F |
| Enclosure: | OPEN | Inverter Code: | Inverter Ready |
| Frame: | 145T | KVA Code: | K |
| Frame Material: | Steel | Lifting Lugs: | No Lifting Lugs |
| Output @ Frequency: | 2.000 HP @ 50 HZ | Locked Bearing Indicator: | No Locked Bearing |
| Synchronous Speed @ Frequency: | 1500 RPM @ 50 HZ | Motor Lead Quantity/Wire Size: | 6 @ 18 AWG |
| Voltage @ Frequency: | 400.0 V @ 50 HZ | Motor Lead Exit: | Ko Box |
| | 230.0 V @ 50 HZ | Motor Lead Termination: | Flying Leads |
| XP Class and Group: | None | Motor Type: | 3528M |
| XP Division: | Not Applicable | Mounting Arrangement: | F1 |
| Agency Approvals: | CE | Power Factor: | 73 |
| | CSA | Product Family: | General Purpose |
| | UR | Pulley End Bearing Type: | Ball |
| Auxillary Box: | No Auxillary Box | Pulley Face Code: | Standard |
| Auxillary Box Lead Termination: | None | Pulley Shaft Indicator: | Standard |
| Base Indicator: | Rigid | Rodent Screen: | None |
| Bearing Grease Type: | Polyrex EM (-20F +300F) | RoHS Status: | ROHS COMPLIANT |
| Blower: | None | Shaft Extension Location: | Pulley End |

| | | | |
|---------------------------------------|---------------------------|------------------------------------|---------------------|
| Current @ Voltage: | 3.400 A @ 400.0 V | Shaft Ground Indicator: | No Shaft Grounding |
| | 5.900 A @ 230.0 V | Shaft Rotation: | Reversible |
| Design Code: | B | Shaft Slinger Indicator: | No Slinger |
| Drip Cover: | No Drip Cover | Speed Code: | Single Speed |
| Duty Rating: | CONT | Motor Standards: | NEMA |
| Electrically Isolated Bearing: | Not Electrically Isolated | Starting Method: | Direct on line |
| Feedback Device: | NO FEEDBACK | Thermal Device - Bearing: | None |
| Front Face Code: | Standard | Thermal Device - Winding: | None |
| Front Shaft Indicator: | None | Vibration Sensor Indicator: | No Vibration Sensor |
| Heater Indicator: | No Heater | Winding Thermal 1: | None |
| | | Winding Thermal 2: | None |

| Nameplate NP2716L | | | | | | | | | | | |
|-------------------|-----------------------------|--|--|------|----------------|------|-----|--------|------|----|---|
| CAT NO | EM3157T-57 | | | | | | | | | | |
| SPEC. | 35BB001N364G1 | | | | | | | | | | |
| HP | 2 | | | | | | | PH | 3 | | |
| VOLTS | 230/400 | | | | | | | | | | |
| AMP | 5.9/3.4 | | | | | | | | | | |
| RPM | 1445 | | | | | | | | | | |
| FRAME | 145T | | | | HZ | 50 | | | I.P. | 23 | |
| SER.F. | 1.15 | | | CODE | K | | DES | B | | CL | F |
| NOM.EFF. | 85.3 | | | | % | | | (100%) | | | |
| PF | 73 | | | | USABLE AT 208V | | | | | | |
| RATING | 40C AMB-CONT | | | | | | CC | | | | |
| DE BRG | 6205 | | | | ODE | 6203 | | | | | |
| ENCL | OPEN | | | SN | | | | | | | |
| BLANK | IE3 - 84.9 (75%) 83.1 (50%) | | | | | | | | | | |
| | | | | | | | | | | | |
| | | | | | | | | | | | |

| Parts List | | |
|-------------|--|----------|
| Part Number | Description | Quantity |
| SA312762 | SA 35BB001N364G1 | 1.000 EA |
| RA300202 | RA 35BB001N364G1 | 1.000 EA |
| NS2512A01 | INSULATOR, CONDUIT BOX X | 1.000 EA |
| 35CB3009 | 35 CB W/1.09 DIA. LEAD HOLE @ 6: | 1.000 EA |
| 51XB1016A07 | 10-16 X 7/16 HXWSSLD SERTYB | 2.000 EA |
| 11XW1032G06 | 10-32 X .38, TAPTITE II, HEX WSHR SLTD U | 1.000 EA |
| 35EP3209A00 | MASTER ODE,203 BRG,GRSR | 1.000 EA |
| HW4500A01 | 1641B(ALEMITE)400 UNIV, GREASE FITT | 1.000 EA |
| HW5100A03 | WAVY WASHER (W1543-017) | 1.000 EA |
| 35EP3210A00 | MASTER DE,205 BRG,1.000SH,GRSR | 1.000 EA |
| HW4500A01 | 1641B(ALEMITE)400 UNIV, GREASE FITT | 1.000 EA |
| XY1032A02 | 10-32 HEX NUT DIRECTIONAL SERRATION | 4.000 EA |
| 35CB4521 | 35 LIPPED CB LID (GALV & PHOSPH) | 1.000 EA |
| 51XW0832A07 | 8-32 X .44, TAPTITE II, HEX WSHR SLTD SE | 4.000 EA |
| HW2501D13 | KEY, 3/16 SQ X 1.375 | 1.000 EA |
| HA7000A01 | KEY RETAINER 7/8" DIA SHAFT | 1.000 EA |
| 85XU0407S04 | 4X1/4 U DRIVE PIN STAINLESS | 2.000 EA |
| MJ1000A02 | GREASE, POLYREX EM EXXON (USe 4824-15A) | 0.050 LB |
| MG1000G27 | MED CHARCOAL METALLIC GREY 400-0096 | 0.017 GA |
| HA3100A18 | THRUBOLT 10-32 X 9.250 | 4.000 EA |
| LB1119N | WARNING LABEL | 1.000 EA |
| LC0034 | CONNECTION LABEL | 1.000 EA |
| MN416A01 | TAG-INSTAL-MAINT no wire (1100/bx) 11/14 | 1.000 EA |
| NP2716L | ALUM SUPER-E NEMA IE3 UL CSA CC CE | 1.000 EA |

| Parts List (continued) | | |
|-------------------------------|--------------------------|-----------------|
| Part Number | Description | Quantity |
| 35PA1066 | PKG GRP, PRINT PK1008A06 | 1.000 EA |
| PE-0000001 | ZRTG PE ASSEMBLY | 1.000 EA |
| FE-0000001 | ZRTG FE ASSEMBLY | 1.000 EA |

AC Induction Motor Performance Data

Record # 54650 - Typical performance - not guaranteed values

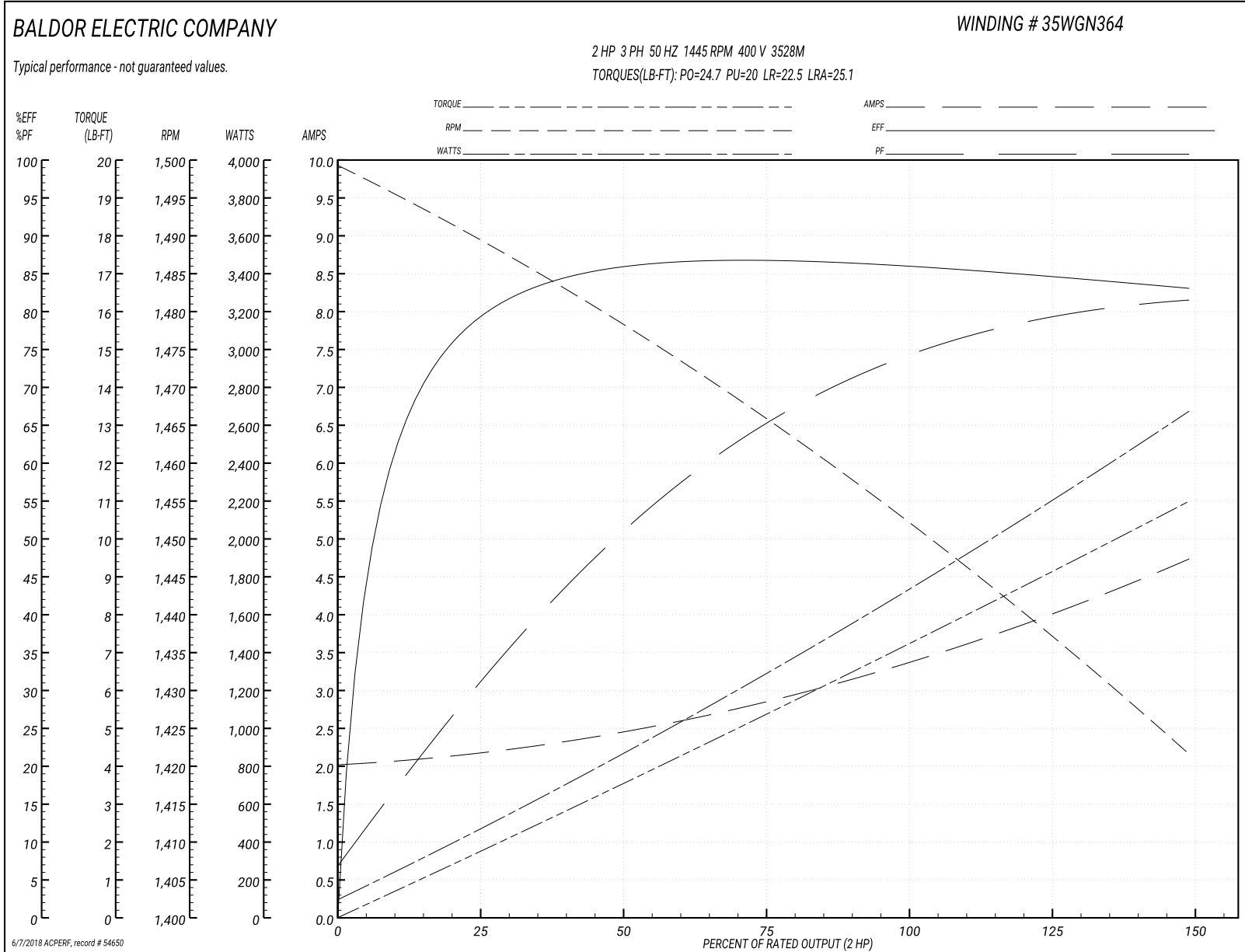
| | | |
|-------------------------------|--------------------|------------------------|
| Winding: 35WGN364-R005 | Type: 3528M | Enclosure: OPEN |
|-------------------------------|--------------------|------------------------|

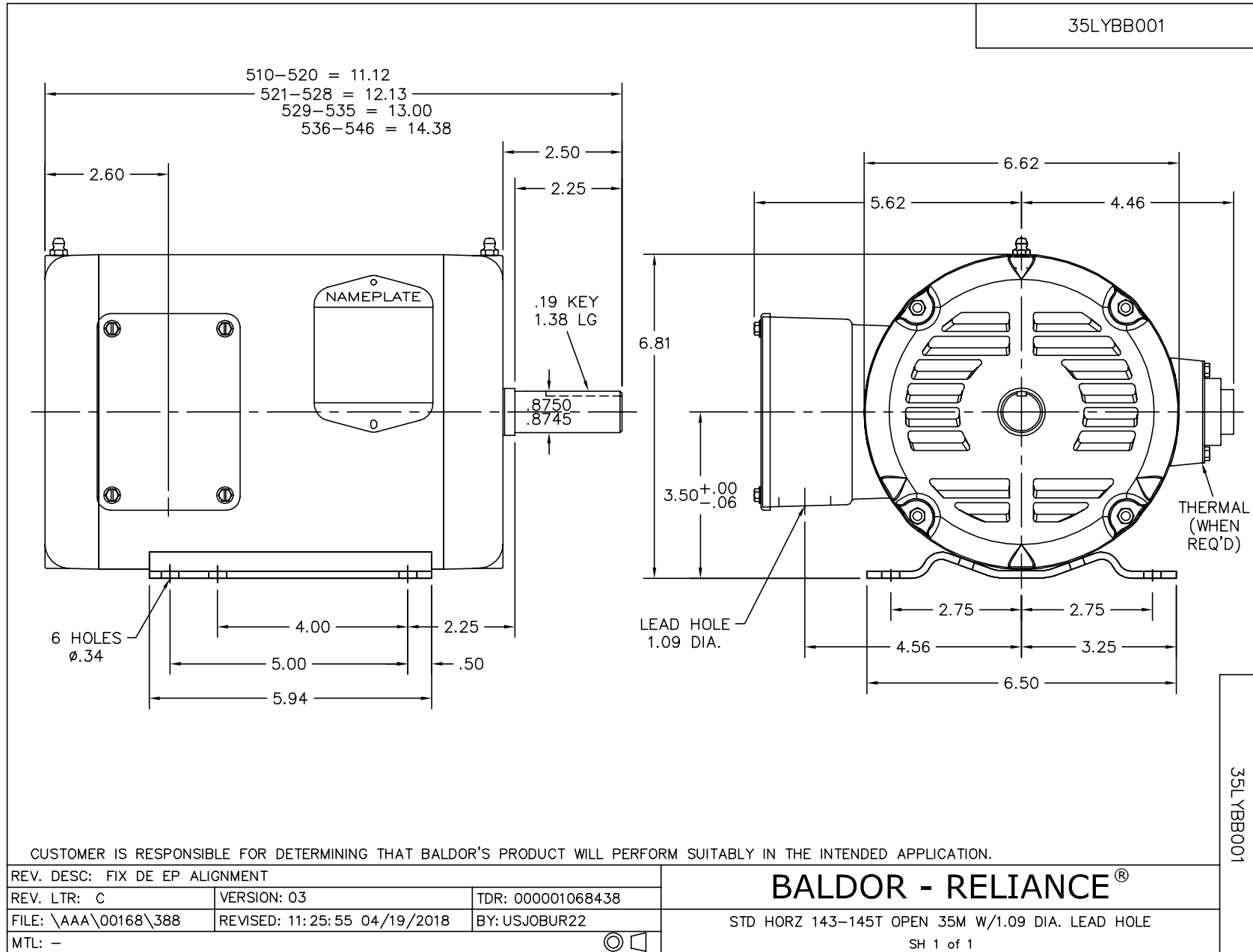
| Nameplate Data | | | | 400 V, 50 Hz: High Voltage Connection | |
|-----------------------|--------------|--------------|----|--|--------------------------|
| Rated Output (HP) | 2 | | | Full Load Torque | 7.12 LB-FT |
| Volts | 230/400 | | | Start Configuration | direct on line |
| Full Load Amps | 5.9/3.4 | | | Breakdown Torque | 24.7 LB-FT |
| R.P.M. | 1445 | | | Pull-up Torque | 20 LB-FT |
| Hz | 50 | Phase | 3 | Locked-rotor Torque | 22.5 LB-FT |
| NEMA Design Code | B | KVA Code | K | Starting Current | 25.1 A |
| Service Factor (S.F.) | 1.15 | | | No-load Current | 2.05 A |
| NEMA Nom. Eff. | 85.3 | Power Factor | 73 | Line-line Res. @ 25°C | 7.21 Ω |
| Rating - Duty | 40C AMB-CONT | | | Temp. Rise @ Rated Load | 67°C |
| S.F. Amps | | | | Temp. Rise @ S.F. Load | 81°C |
| | | | | Locked-rotor Power Factor | 56.6 |
| | | | | Rotor inertia | 0.165 LB-FT ² |

Load Characteristics 400 V, 50 Hz, 2 HP

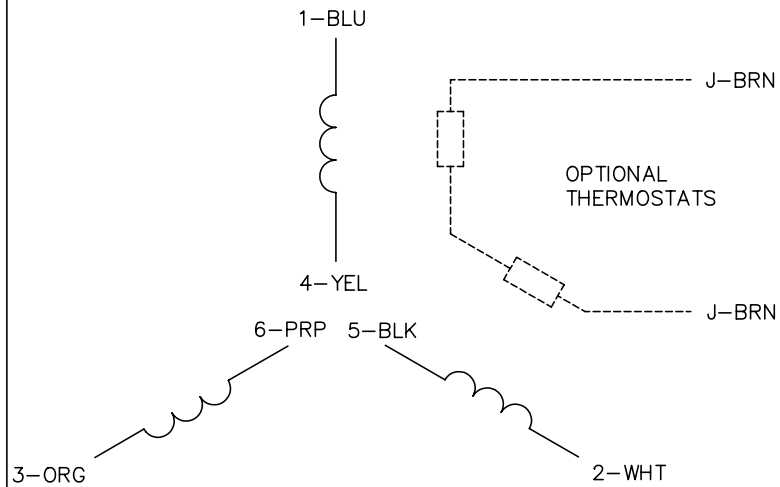
| % of Rated Load | 25 | 50 | 75 | 100 | 125 | 150 | S.F. |
|-----------------|------|------|------|------|------|------|------|
| Power Factor | 31 | 51 | 65 | 73 | 79 | 82 | 77 |
| Efficiency | 78.4 | 85.5 | 86.9 | 86.1 | 84.9 | 83 | 85.4 |
| Speed | 1490 | 1479 | 1466 | 1453 | 1437 | 1422 | 1443 |
| Line amperes | 2.14 | 2.41 | 2.85 | 3.37 | 4.01 | 4.71 | 3.75 |

Performance Graph at 400V, 50Hz, 2.0HP Typical performance - Not guaranteed values

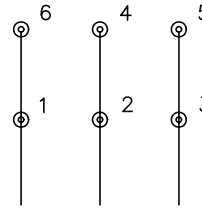




CD0022

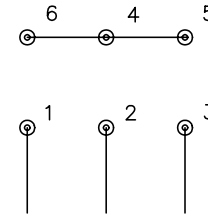


LOW VOLTAGE
(1D)



LINE

HIGH VOLTAGE
(1Y)



LINE

NOTES:

1. INTERCHANGE ANY TWO LINE LEADS TO REVERSE ROTATION.
2. OPTIONAL THERMOSTATS ARE PROVIDED WHEN SPECIFIED.
3. ACTUAL NUMBER OF INTERNAL PARALLEL CIRCUITS MAY BE A MULTIPLE OF THOSE SHOWN ABOVE.
4. LEAD COLORS ARE OPTIONAL. LEADS MUST ALWAYS BE NUMBERED AS SHOWN.

| | | | |
|---|---------|------------------------|--------------|
| REV. DESC: REVISE TO SHOW OPTIONAL COLORS | | | |
| REV. LTR: F | BY: JLP | REVISED: 01/21/99 3:54 | TDR: 0171435 |
| CD0022 | | FILE: AAA00005144 | MDL: - |
| | | MTL: - | |

BALDOR ELECTRIC Co.

3PH, DV, 6 LEADS, DELTA/WYE CONNECTION

CD0022