

BALDOR® • **RELIANCE**

Product Information Packet

EM3546T

1HP,1760RPM,3PH,60HZ,143T,3519M,TEFC,F1

Copyright © All product information within this document is subject to Baldor Electric Company copyright © protection, unless otherwise noted.

| Part Detail | | | | | | | | | |
|-------------------|---------------|----------------|-------|----------------|----------|---------------|------------|--|--|
| Revision: | E | Status: | PRD/A | Change #: | | Proprietary: | No | | |
| Type: | AC | Prod. Type: | 3519M | Elec. Spec: | 35WGM492 | CD Diagram: | | | |
| Enclosure: | TEFC | Mfg Plant: | | Mech. Spec: | 35AA001 | Layout: | | | |
| Frame: | 143T | Mounting: | F1 | Poles: | 04 | Created Date: | 08-03-2010 | | |
| Base: | RG | Rotation: | R | Insulation: | F | Eff. Date: | 07-17-2012 | | |
| Leads: | 9#18 | Literature: | | Elec. Diagram: | | Replaced By: | | | |
| Nameplate NP1259L | | | | | | | | | |
| CAT.NO. | EM3546T | | | | | | | | |
| SPEC. | 35AA001M492G1 | | | | | | | | |
| HP | 1 | | | | | | | | |
| VOLTS | 208-230/460 | | | | | | | | |
| AMP | 3.1-3/1.5 | | | | | | | | |
| RPM | 1760 | | | | | | | | |
| FRAME | 143T | HZ | 60 | PH | 3 | | | | |
| SER.F. | 1.15 | CODE | L | DES | B | CL | F | | |
| NEMA-NOM-EFF | 85.5 | PF | 71 | | | | | | |
| RATING | 40C AMB-CONT | | | | | | | | |
| CC | 010A | USABLE AT 208V | 3.1 | | | | | | |
| DE | 6205 | ODE | 6203 | | | | | | |
| ENCL | TEFC | SN | | | | | | | |
| | | | | | | | | | |

| Parts List | | |
|----------------|--|----------|
| Part Number | Description | Quantity |
| SA200827 | SA 35AA001M492G1 | 1.000 EA |
| RA188138 | RA 35AA001M492G1 | 1.000 EA |
| 34FN3002B01 | EXTERNAL FAN, PLASTIC, .637/.639 HUB W/ | 1.000 EA |
| S/P107-000-001 | SUPER E PROC'S-FS & WS PLTS-POLYREX EM G | 1.000 EA |
| NS2512A01 | INSULATOR, CONDUIT BOX X | 1.000 EA |
| 35CB3009 | 35 CB CASTING W/1.09 DIA. LEAD HOLE @ 6: | 1.000 EA |
| 36GS1000SP | GASKET-CONDUIT BOX, .06 THICK #SV-330 LE | 1.000 EA |
| 51XB1016A07 | 10-16 X 7/16 HXWSSLD SERTYB | 2.000 EA |
| 11XW1032G06 | 10-32 X .38, TAPTITE II, HEX WSHR SLTD U | 1.000 EA |
| 35EP3100M01 | FREP TEFC 203 BRG W/GRSR (RAISED FH PADS | 1.000 EA |
| HW4500A01 | 1641B(ALEMITE)400 UNIV, GREASE FITT | 1.000 EA |
| HW5100A03SP | WAVY WASHER (W1543-017) | 1.000 EA |
| 35EP3101A01SP | STD PU EP-ENCLOSED-205 BRG-W/GREASER | 1.000 EA |
| HW4500A01 | 1641B(ALEMITE)400 UNIV, GREASE FITT | 1.000 EA |
| XY1032A02 | 10-32 HEX NUT DIRECTIONAL SERRATION | 4.000 EA |
| 51XB1214A16 | 12-14X1.00 HXWSSLD SERTYB | 1.000 EA |
| 35FH4005A84SP | IEC FH W/GRSR, NO DIMPLES W/AUTOPHERETIC | 1.000 EA |
| 51XW1032A06 | 10-32 X .38, TAPTITE II, HEX WSHR SLTD S | 3.000 EA |
| 35CB4521GX | CONDUIT BOX LID KIT | 1.000 EA |
| 51XW0832A07 | 8-32 X .44, TAPTITE II, HEX WSHR SLTD SE | 4.000 EA |
| HW2501D13SP | KEY, 3/16 SQ X 1.375 | 1.000 EA |
| HA7000A01 | KEY RETAINER 7/8" DIA SHAFT | 1.000 EA |
| 85XU0407S04 | 4X1/4 U DRIVE PIN STAINLESS | 2.000 EA |
| MJ1000A75 | GREASE, POLYREX EM EXXON | 0.050 LB |

| Parts List (continued) | | |
|------------------------|--|----------|
| Part Number | Description | Quantity |
| MG1000Y03 | WILKO 689.710 GOLD PAINT SUPER E | 0.017 GA |
| HA3100A15 | THRUBOLT 10-32 X 8.375 | 4.000 EA |
| LC0005E01 | CONN.DIA./WARNING LABEL (LC0005/LB1119) | 1.000 EA |
| LB1125C02 | SUPER-E (STOCK CTN LABEL SUPER-E WITH FL | 1.000 EA |
| LB1357 | ENERGY GUIDE LABEL (BOX LABEL) | 1.000 SH |
| NP1259L | ALUM SUPER-E UL CSA-EEV CC NEMA PREMIUM | 1.000 EA |
| PA1000 | PACKING GROUP 3500 SHORT | 1.000 EA |

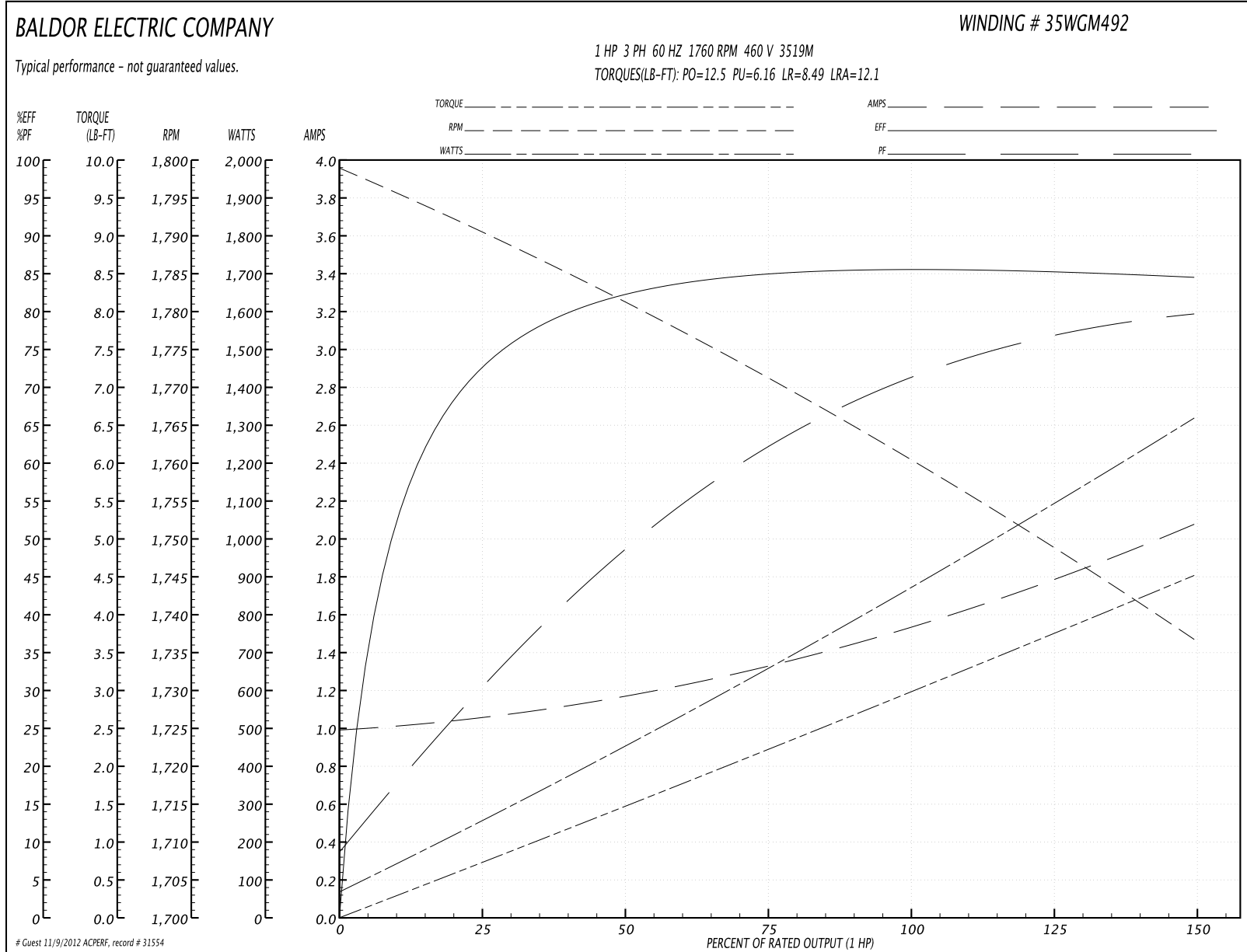
| Accessories | | |
|---------------|--------------|------------|
| Part Number | Description | Multiplier |
| 35-8762 | C FACE KIT | A8 |
| 35EP1506A01SP | D-FLANGE KIT | A8 |

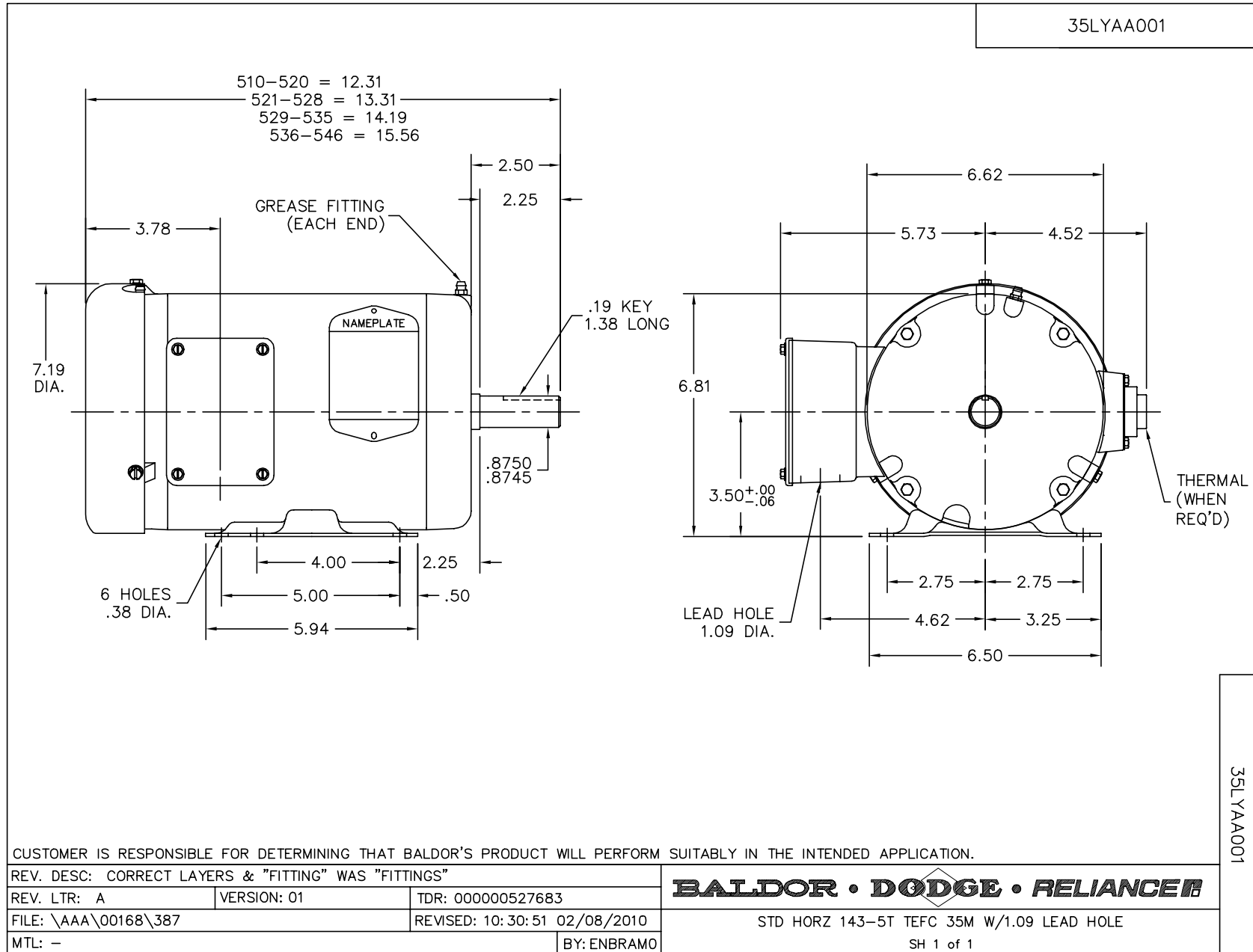
Performance Data at 460V, 60Hz, 1.0HP (Typical performance - Not guaranteed values)

| General Characteristics | | | |
|--------------------------|---------------------------------|----------------------|------------|
| Full Load Torque: | 2.97 LB-FT | Start Configuration: | DOL |
| No-Load Current: | 1.0 Amps | Break-Down Torque: | 12.5 LB-FT |
| Line-line Res. @ 25°C.: | 16.05 Ohms A Ph / 0.0 Ohms B Ph | Pull-Up Torque: | 6.16 LB-FT |
| Temp. Rise @ Rated Load: | 36 C | Locked-Rotor Torque: | 8.49 LB-FT |
| Temp. Rise @ S.F. Load: | 43 C | Starting Current: | 12.1 Amps |

| Load Characteristics | | | | | | | |
|----------------------|--------|--------|--------|--------|--------|--------|--------|
| % of Rated Load | 25 | 50 | 75 | 100 | 125 | 150 | S.F. |
| Power Factor: | 31.0 | 49.0 | 62.0 | 71.0 | 77.0 | 80.0 | 75.0 |
| Efficiency: | 72.2 | 82.1 | 84.8 | 85.6 | 85.3 | 84.4 | 85.4 |
| Speed: | 1790.9 | 1781.2 | 1771.5 | 1760.7 | 1749.1 | 1736.6 | 1754.0 |
| Line Amperes: | 1.05 | 1.15 | 1.33 | 1.54 | 1.79 | 2.07 | 1.69 |

Performance Graph at 460V, 60Hz, 1.0HP Typical performance - Not guaranteed values





CD0005

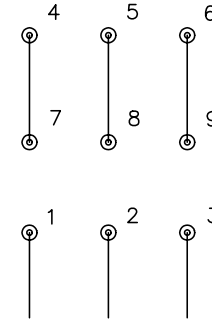


LOW VOLTAGE
(2Y)



LINE

HIGH VOLTAGE
(1Y)



LINE

NOTES:

1. INTERCHANGE ANY TWO LINE LEADS TO REVERSE ROTATION.
2. OPTIONAL THERMOSTATS ARE PROVIDED WHEN SPECIFIED.
3. ACTUAL NUMBER OF INTERNAL PARALLEL CIRCUITS MAY BE A MULTIPLE OF THOSE SHOWN ABOVE.
4. LEAD COLORS ARE OPTIONAL. LEADS MUST ALWAYS BE NUMBERED AS SHOWN.

| | | | |
|---|---------|-------------------------|--------------|
| REV. DESC: REVISE TO SHOW OPTIONAL COLORS | | | |
| REV. LTR: E | BY: JLP | REVISED: 01/19/99 10:15 | TDR: 0171435 |
| 900000 | | FILE: AAA00005140 | MDL: - |
| | | MTL: - | |

BALDOR ELECTRIC Co.

3PH, DV, 9 LEADS

CD0005