

BALDOR® • *RELIANCE*

Product Information Packet

EM3559T-G

3HP,3450RPM,3PH,60HZ,145T,3540M,TEFC,F1

Copyright © All product information within this document is subject to Baldor Electric Company copyright © protection, unless otherwise noted.

| Part Detail | | | | | | | |
|-------------|------|-------------|-------|----------------|----------|---------------|------------|
| Revision: | - | Status: | PRD/A | Change #: | | Proprietary: | No |
| Type: | AC | Prod. Type: | 3540M | Elec. Spec: | 35WQG130 | CD Diagram: | |
| Enclosure: | TEFC | Mfg Plant: | | Mech. Spec: | 35Z944 | Layout: | |
| Frame: | 145T | Mounting: | F1 | Poles: | 02 | Created Date: | 11-16-2011 |
| Base: | RG | Rotation: | R | Insulation: | H | Eff. Date: | 11-28-2011 |
| Leads: | 9#18 | Literature: | | Elec. Diagram: | | Replaced By: | |

| Nameplate NP1259L | | | | | | | | | |
|-------------------|--------------|----------------|------|-----|---|----|---|--|--|
| CAT.NO. | EM3559T-G | | | | | | | | |
| SPEC. | 35Z944Q130G1 | | | | | | | | |
| HP | 3 | | | | | | | | |
| VOLTS | 208-230/460 | | | | | | | | |
| AMP | 7.7-7/3.5 | | | | | | | | |
| RPM | 3450 | | | | | | | | |
| FRAME | 145T | HZ | 60 | PH | 3 | | | | |
| SER.F. | 1.15 | CODE | M | DES | B | CL | H | | |
| NEMA-NOM-EFF | 87.5 | PF | 92 | | | | | | |
| RATING | 40C AMB-CONT | | | | | | | | |
| CC | 010A | USABLE AT 208V | 7.7 | | | | | | |
| DE | 6205 | ODE | 6203 | | | | | | |
| ENCL | TEFC | SN | | | | | | | |
| | | | | | | | | | |

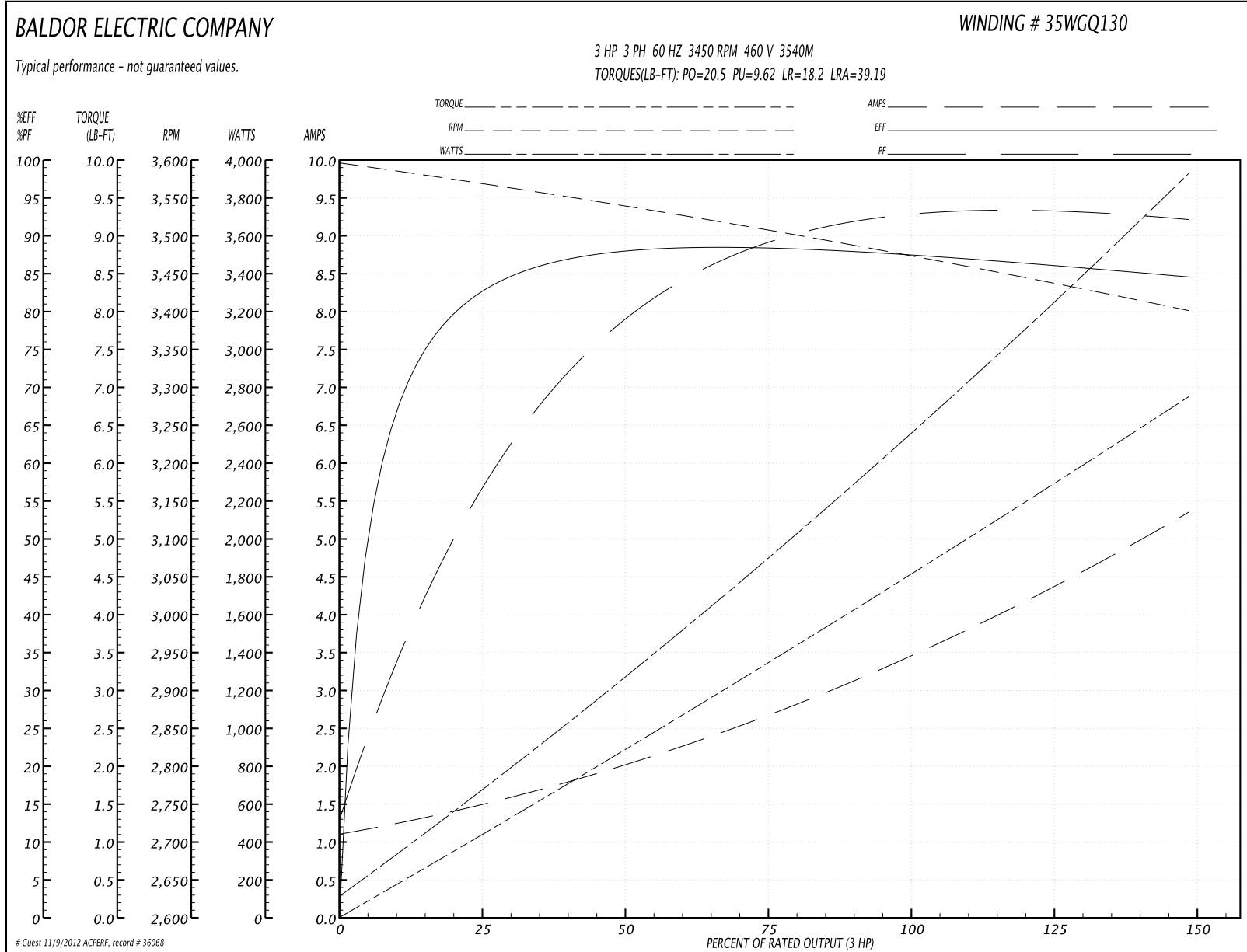
| Parts List | | |
|----------------|--|----------|
| Part Number | Description | Quantity |
| SA234536 | SA 35Z944Q130G1 | 1.000 EA |
| RA221508 | RA 35Z944Q130G1 | 1.000 EA |
| 34FN3002B01 | EXTERNAL FAN, PLASTIC, .637/.639 HUB W/ | 1.000 EA |
| S/P107-000-001 | SUPER E PROC'S-FS & WS PLTS-POLYREX EM G | 1.000 EA |
| NS2512A01 | INSULATOR, CONDUIT BOX X | 1.000 EA |
| 35CB3009 | 35 CB CASTING W/1.09 DIA. LEAD HOLE @ 6: | 1.000 EA |
| 36GS1000SP | GASKET-CONDUIT BOX, .06 THICK #SV-330 LE | 1.000 EA |
| 51XB1016A07 | 10-16 X 7/16 HXWSSLD SERTYB | 2.000 EA |
| 11XW1032G06 | 10-32 X .38, TAPTITE II, HEX WSHR SLTD U | 1.000 EA |
| 35EP3100M01 | FREP TEFC 203 BRG W/GRSR (RAISED FH PADS | 1.000 EA |
| HW4500A01 | 1641B(ALEMITE)400 UNIV, GREASE FITT | 1.000 EA |
| HW5100A03SP | WAVY WASHER (W1543-017) | 1.000 EA |
| BP5308A01 | AEGIS SH GRD ASSY W/RETAINER RING | 1.000 EA |
| 35EP3101A49 | SPL PUEP-ENCL-205 BRG W/GREASER | 1.000 EA |
| HW4500A01 | 1641B(ALEMITE)400 UNIV, GREASE FITT | 1.000 EA |
| 51XN1032A18 | 10-32 X 1 1/8 HX WS SL SR (ESKAY) | 2.000 EA |
| XY1032A02 | 10-32 HEX NUT DIRECTIONAL SERRATION | 4.000 EA |
| 35FH4005A84SP | IEC FH W/GRSR, NO DIMPLES W/AUTOPHERETIC | 1.000 EA |
| 51XW1032A06 | 10-32 X .38, TAPTITE II, HEX WSHR SLTD S | 3.000 EA |
| 35CB4521 | 35 LIPPED CB LID (GALV & PHOSPH) | 1.000 EA |
| 35GS1030 | 35 GS FOR CB LID - LEXIDE | 1.000 EA |
| 51XW0832A07 | 8-32 X .44, TAPTITE II, HEX WSHR SLTD SE | 4.000 EA |
| HW2501D13SP | KEY, 3/16 SQ X 1.375 | 1.000 EA |
| HA7000A01 | KEY RETAINER 7/8" DIA SHAFT | 1.000 EA |

| Parts List (continued) | | |
|------------------------|--|----------|
| Part Number | Description | Quantity |
| 85XU0407S04 | 4X1/4 U DRIVE PIN STAINLESS | 2.000 EA |
| LB1459 | AEGIS SGR LABEL "AEGISLBL-100" | 1.000 EA |
| MJ1000A75 | GREASE, POLYREX EM EXXON | 0.050 LB |
| MG1000Y03 | WILKO 689.710 GOLD PAINT SUPER E | 0.017 GA |
| HA3100A26 | THRUBOLT 10-32 X 11.500 | 4.000 EA |
| LC0005E01 | CONN.DIA./WARNING LABEL (LC0005/LB1119) | 1.000 EA |
| LB1125C02 | SUPER-E (STOCK CTN LABEL SUPER-E WITH FL | 1.000 EA |
| LB1357 | ENERGY GUIDE LABEL (BOX LABEL) | 1.000 SH |
| LB5040 | INSTRUCTION TAG, AC & DC | 1.000 EA |
| NP1259L | ALUM SUPER-E UL CSA-EEV CC NEMA PREMIUM | 1.000 EA |
| 35PA1007 | PACKAGING GROUP | 1.000 EA |

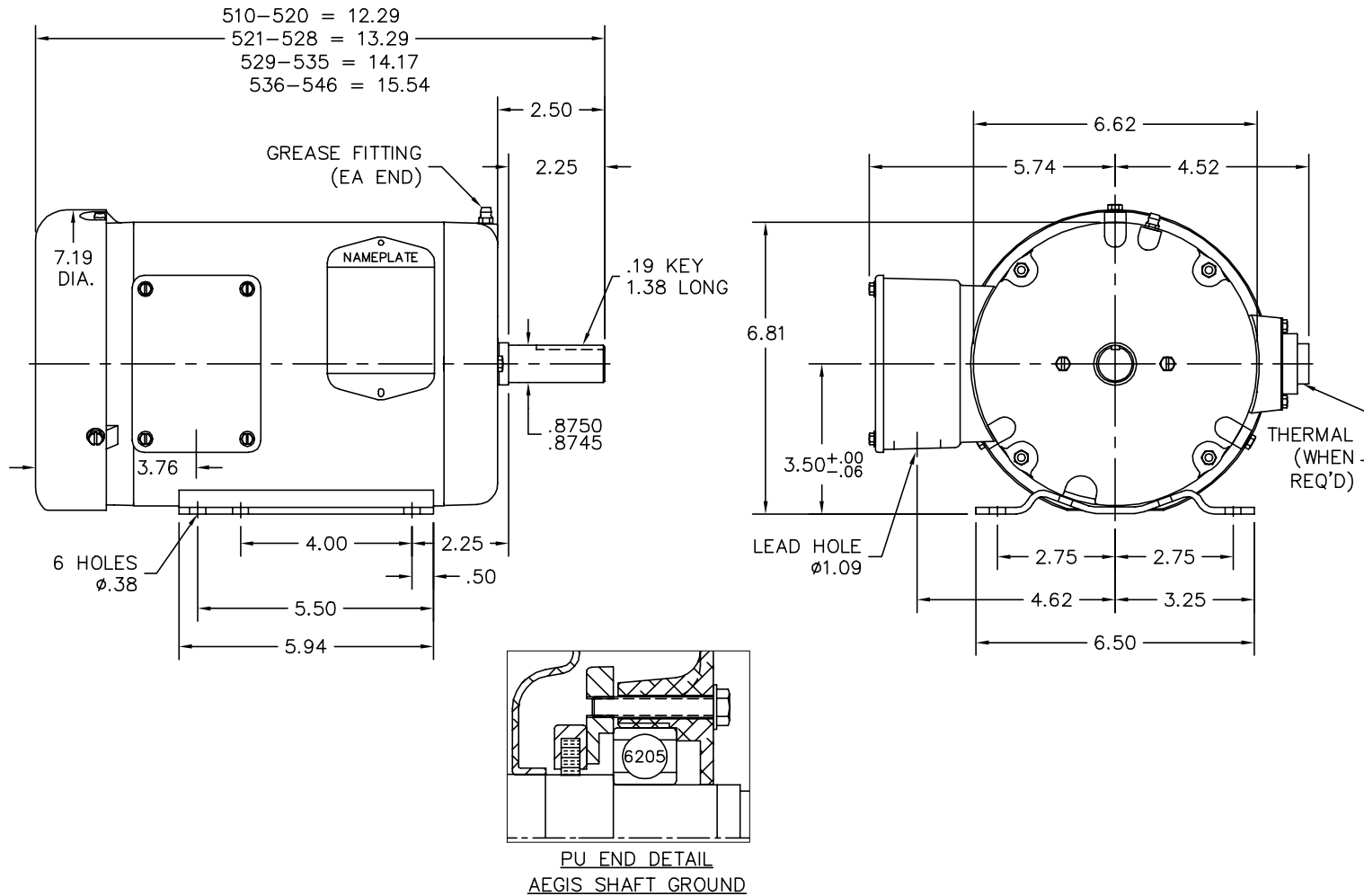
Performance Data at 460V, 60Hz, 3.0HP (Typical performance - Not guaranteed values)

| General Characteristics | | | | | | | |
|--------------------------|---------------------------------|--------|--------|----------------------|------------|--------|--------|
| Full Load Torque: | 4.59 LB-FT | | | Start Configuration: | DOL | | |
| No-Load Current: | 1.14 Amps | | | Break-Down Torque: | 20.5 LB-FT | | |
| Line-line Res. @ 25°C.: | 4.032 Ohms A Ph / 0.0 Ohms B Ph | | | Pull-Up Torque: | 9.62 LB-FT | | |
| Temp. Rise @ Rated Load: | 58 C | | | Locked-Rotor Torque: | 18.2 LB-FT | | |
| Temp. Rise @ S.F. Load: | 71 C | | | Starting Current: | 39.19 Amps | | |
| Load Characteristics | | | | | | | |
| % of Rated Load | 25 | 50 | 75 | 100 | 125 | 150 | S.F. |
| Power Factor: | 60.0 | 81.0 | 88.0 | 92.0 | 94.0 | 93.0 | 93.0 |
| Efficiency: | 82.6 | 87.7 | 88.3 | 87.6 | 86.3 | 84.4 | 86.8 |
| Speed: | 3564.0 | 3536.0 | 3506.0 | 3474.0 | 3439.0 | 3399.0 | 3453.0 |
| Line Amperes: | 1.46 | 2.04 | 2.74 | 3.53 | 4.38 | 5.34 | 4.04 |

Performance Graph at 460V, 60Hz, 3.0HP Typical performance - Not guaranteed values



35LYZ944



CUSTOMER IS RESPONSIBLE FOR DETERMINING THAT BALDOR'S PRODUCT WILL PERFORM SUITABLY IN THE INTENDED APPLICATION.

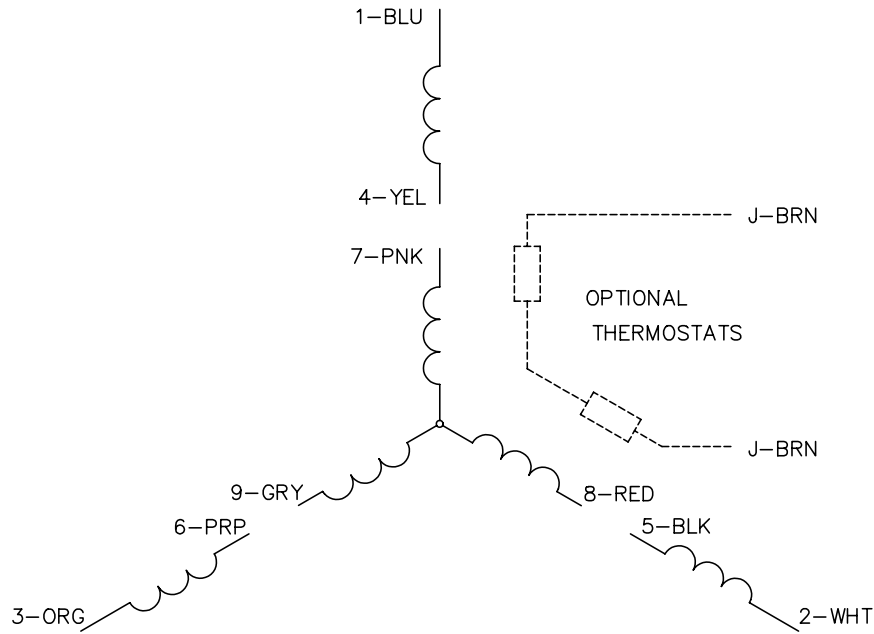
| | | |
|----------------------|-------------|------------------------------|
| REV. DESC: NEW | | |
| REV. LTR: - | VERSION: 00 | TDR: 000000721309 |
| FILE: \AAA\00186\914 | | REVISED: 12:00:25 11/16/2011 |
| MTL: - | | BY: ENBENBO |

BALDOR

HOR 143-5T TEFC M W/1.09 LEAD HL, AEGIS INT SH GND, "W" BASE
 SH 1 of 1

35LYZ944

CD0005

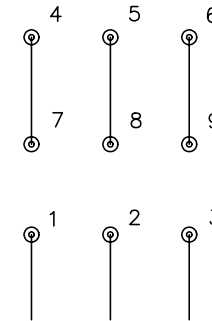


LOW VOLTAGE
(2Y)



LINE

HIGH VOLTAGE
(1Y)



LINE

NOTES:

1. INTERCHANGE ANY TWO LINE LEADS TO REVERSE ROTATION.
2. OPTIONAL THERMOSTATS ARE PROVIDED WHEN SPECIFIED.
3. ACTUAL NUMBER OF INTERNAL PARALLEL CIRCUITS MAY BE A MULTIPLE OF THOSE SHOWN ABOVE.
4. LEAD COLORS ARE OPTIONAL. LEADS MUST ALWAYS BE NUMBERED AS SHOWN.

| | | | |
|---|---------|-------------------------|--------------|
| REV. DESC: REVISE TO SHOW OPTIONAL COLORS | | | |
| REV. LTR: E | BY: JLP | REVISED: 01/19/99 10:15 | TDR: 0171435 |
| 900000 | | FILE: AAA00005140 | MDL: - |
| | | MTL: - | |

BALDOR ELECTRIC Co.

3PH, DV, 9 LEADS

CD0005