

BALDOR® • RELIANCE

Product Information Packet

EM3714T

10HP,1770RPM,3PH,60HZ,215T,3752M,TEFC,F1

Copyright © All product information within this document is subject to Baldor Electric Company copyright © protection, unless otherwise noted.

| Part Detail | | | | | | | | | |
|-------------------|--------------|----------------|-------|----------------|----------|---------------|------------|----|---|
| Revision: | C | Status: | PRD/A | Change #: | | Proprietary: | No | | |
| Type: | AC | Prod. Type: | 3752M | Elec. Spec: | 37WGS518 | CD Diagram: | | | |
| Enclosure: | TEFC | Mfg Plant: | | Mech. Spec: | 37H244 | Layout: | | | |
| Frame: | 215T | Mounting: | F1 | Poles: | 04 | Created Date: | 06-30-2010 | | |
| Base: | RG | Rotation: | R | Insulation: | F | Eff. Date: | 12-16-2011 | | |
| Leads: | 9#14 | Literature: | | Elec. Diagram: | | Replaced By: | | | |
| Nameplate NP1259L | | | | | | | | | |
| CAT.NO. | EM3714T | | | | | | | | |
| SPEC. | 37H244S518G3 | | | | | | | | |
| HP | 10 | | | | | | | | |
| VOLTS | 208-230/460 | | | | | | | | |
| AMP | 25.4-24/12 | | | | | | | | |
| RPM | 1770 | | | | | | | | |
| FRAME | 215T | HZ | 60 | | | PH | 3 | | |
| SER.F. | 1.15 | CODE | K | | | DES | A | CL | F |
| NEMA-NOM-EFF | 91.7 | PF | 85 | | | | | | |
| RATING | 40C AMB-CONT | | | | | | | | |
| CC | 010A | USABLE AT 208V | | | | | | | |
| DE | 6307 | ODE | 6206 | | | | | | |
| ENCL | TEFC | SN | | | | | | | |
| | | | | | | | | | |

| Parts List | | |
|----------------|--|----------|
| Part Number | Description | Quantity |
| SA199522 | SA 37H244S518G3 | 1.000 EA |
| RA186854 | RA 37H244S518G3 | 1.000 EA |
| 37FN3002C01 | EXFN, PLASTIC, 6.00 OD, 1.155 ID | 1.000 EA |
| S/P107-000-001 | SUPER E PROC'S-FS & WS PLTS-POLYREX EM G | 1.000 EA |
| HW3200A01 | 3/8-16X3/4 I-BLT WELDED F/S | 1.000 EA |
| 37CB3006 | 37 CB CASTING W/1.38 LEAD HOLE @ 6:00 | 1.000 EA |
| 37GS1000SP | GASKET, CONDUIT BOX STD., .06 THICK LEXI | 1.000 EA |
| 51XW2520A12 | .25-20 X .75, TAPTITE II, HEX WSHR SLTD | 2.000 EA |
| 11XW1032G06 | 10-32 X .38, TAPTITE II, HEX WSHR SLTD U | 1.000 EA |
| 37EP3101A01SP | FR ENDPLATE,TEFC, 37 L&M, W/GREASER | 1.000 EA |
| HW4500A01 | 1641B(ALEMITE)400 UNIV, GREASE FITT | 1.000 EA |
| HW5100A06 | W2420-025 WVY WSHR (WB) | 1.000 EA |
| 37EP3100A01SP | STD PU ENDPLATE, ENCL,37 "T"-307 BRG, W/ | 1.000 EA |
| HW4500A01 | 1641B(ALEMITE)400 UNIV, GREASE FITT | 1.000 EA |
| XY3118A12 | 5/16-18 HEX NUT DIRECTIONAL SERRATION | 4.000 EA |
| 07FH4007SP | IEC FH W/GRSR, NOTCH @ 6:00 & 3 FAN CVR | 1.000 EA |
| 51XW1032A06 | 10-32 X .38, TAPTITE II, HEX WSHR SLTD S | 3.000 EA |
| 37CB4516 | LIPPED LID FOR 37 FRAME NEC KOBX | 1.000 EA |
| 37GS1008SP | 37 GS FOR CB LID - LEXIDE | 1.000 EA |
| 51XW0832A07 | 8-32 X .44, TAPTITE II, HEX WSHR SLTD SE | 4.000 EA |
| HW2501F21 | KEY, 5/16 SQ X 2.375 | 1.000 EA |
| HA7000A02 | KEY RETAINER RING, 1 1/8 DIA, 1 3/8 DIA | 1.000 EA |
| 85XU0407S04 | 4X1/4 U DRIVE PIN STAINLESS | 2.000 EA |
| LB1115 | LABEL,LIFTING DEVICE | 1.000 EA |

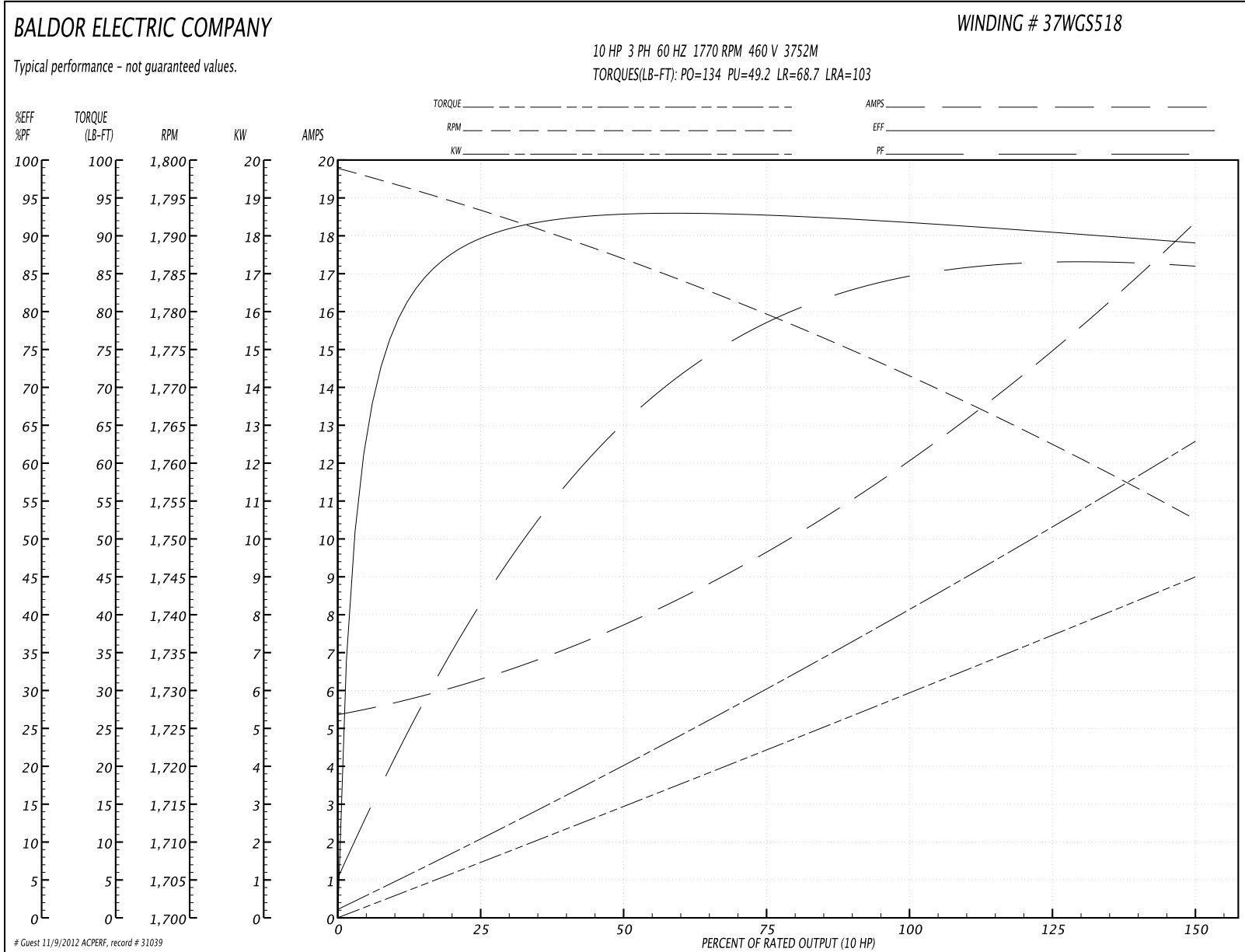
| Parts List (continued) | | |
|------------------------|--|----------|
| Part Number | Description | Quantity |
| MJ1000A75 | GREASE, POLYREX EM EXXON | 0.050 LB |
| 51XB1214A20 | 12-14X1.25 HXWSSLD SERTYB | 1.000 EA |
| HA3104A25 | THRUBOLT .31-18 X 14.75 | 4.000 EA |
| MG1000Y03 | WILKO 689.710 GOLD PAINT SUPER E | 0.028 GA |
| LB1357 | ENERGY GUIDE LABEL (BOX LABEL) | 1.000 SH |
| LB1125C02 | SUPER-E (STOCK CTN LABEL SUPER-E WITH FL | 1.000 EA |
| LC0005E01 | CONN.DIA./WARNING LABEL (LC0005/LB1119) | 1.000 EA |
| NP1259L | ALUM SUPER-E UL CSA-EEV CC NEMA PREMIUM | 1.000 EA |
| 37PA1052 | PACKAGING GROUP, 150 LB MTR 2 X 4 RUNNER | 1.000 EA |

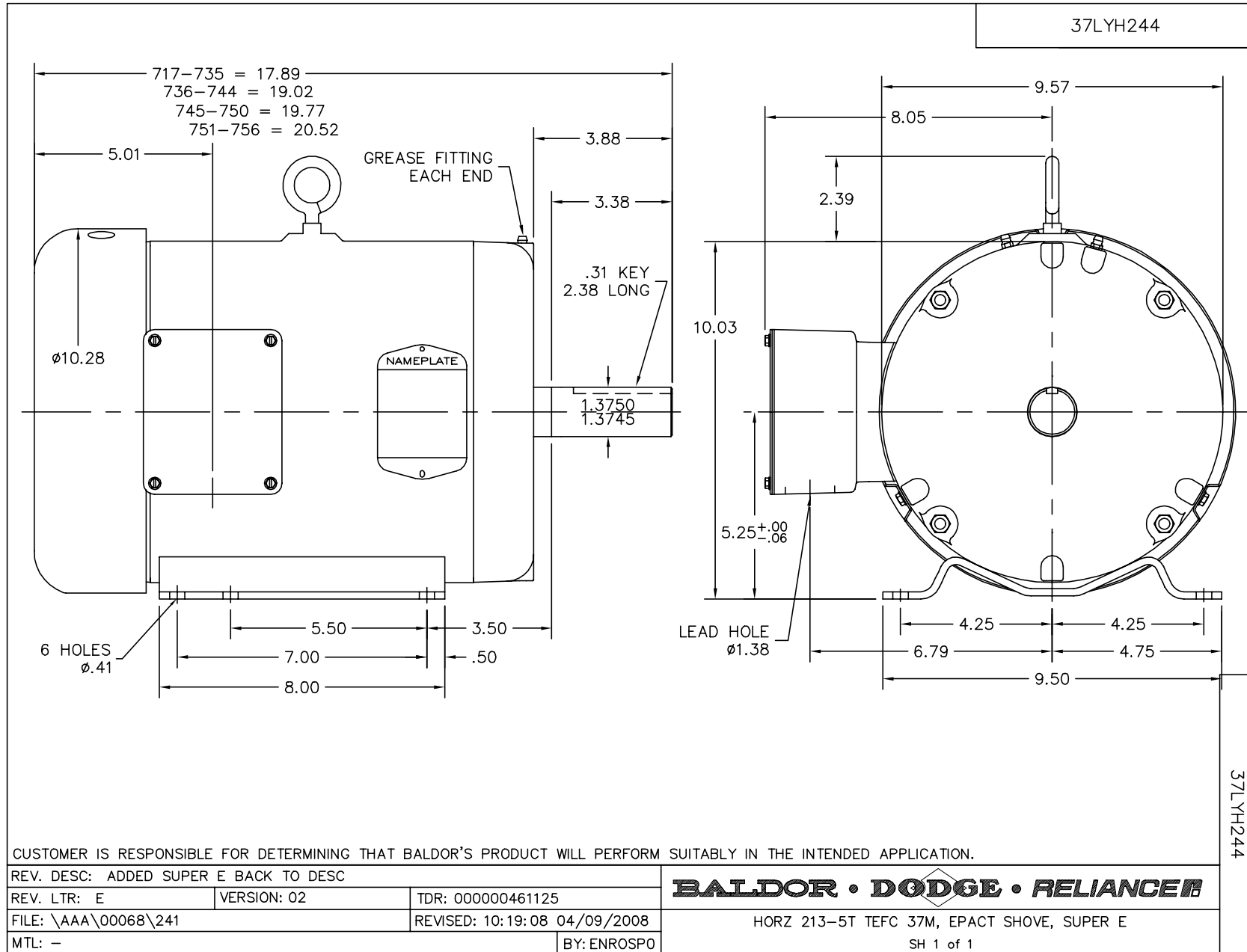
| Accessories | | |
|-------------|-------------|------------|
| Part Number | Description | Multiplier |
| 37-3301 | C FACE KIT | P1 |

Performance Data at 460V, 60Hz, 10.0HP (Typical performance - Not guaranteed values)

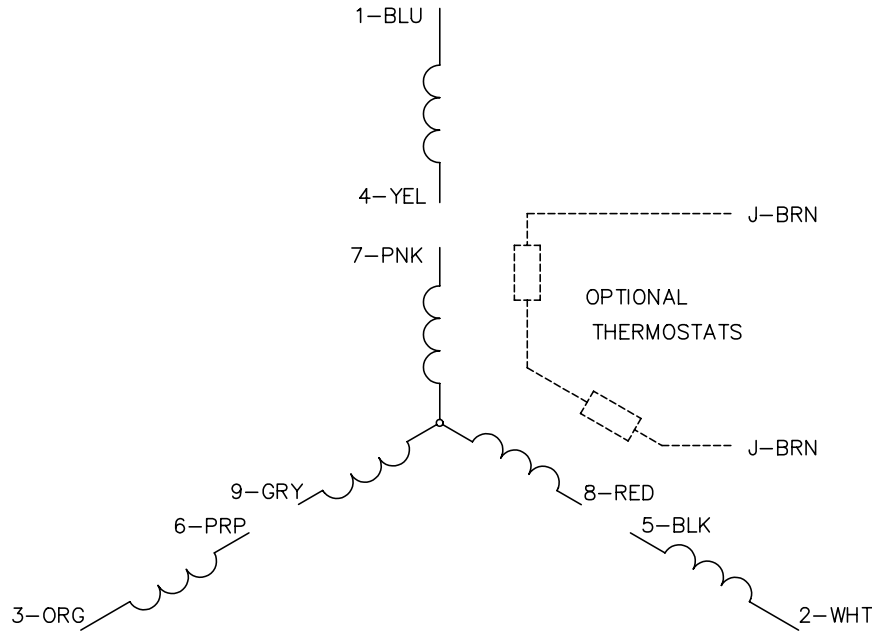
| General Characteristics | | | | | | | |
|--------------------------|-----------------------------------|--------|--------|----------------------|-------------|--------|--------|
| Full Load Torque: | 29.5 LB-FT | | | Start Configuration: | DOL | | |
| No-Load Current: | 5.49 Amps | | | Break-Down Torque: | 134.0 LB-FT | | |
| Line-line Res. @ 25°C.: | 0.93503 Ohms A Ph / 0.0 Ohms B Ph | | | Pull-Up Torque: | 49.2 LB-FT | | |
| Temp. Rise @ Rated Load: | 63 C | | | Locked-Rotor Torque: | 68.7 LB-FT | | |
| Temp. Rise @ S.F. Load: | 81 C | | | Starting Current: | 103.0 Amps | | |
| Load Characteristics | | | | | | | |
| % of Rated Load | 25 | 50 | 75 | 100 | 125 | 150 | S.F. |
| Power Factor: | 42.0 | 66.0 | 79.0 | 85.0 | 84.0 | 87.0 | 84.0 |
| Efficiency: | 88.9 | 92.1 | 92.4 | 91.8 | 90.3 | 89.0 | 90.9 |
| Speed: | 1793.9 | 1786.8 | 1779.7 | 1771.8 | 1762.7 | 1752.5 | 1766.0 |
| Line Amperes: | 6.14 | 7.63 | 9.58 | 11.9 | 15.4 | 18.1 | 14.0 |

Performance Graph at 460V, 60Hz, 10.0HP Typical performance - Not guaranteed values





CD0005

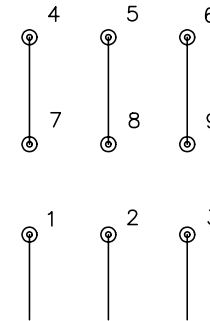


LOW VOLTAGE
(2Y)



LINE

HIGH VOLTAGE
(1Y)



LINE

NOTES:

1. INTERCHANGE ANY TWO LINE LEADS TO REVERSE ROTATION.
2. OPTIONAL THERMOSTATS ARE PROVIDED WHEN SPECIFIED.
3. ACTUAL NUMBER OF INTERNAL PARALLEL CIRCUITS MAY BE A MULTIPLE OF THOSE SHOWN ABOVE.
4. LEAD COLORS ARE OPTIONAL. LEADS MUST ALWAYS BE NUMBERED AS SHOWN.

| | | | |
|---|---------|-------------------------|--------------|
| REV. DESC: REVISE TO SHOW OPTIONAL COLORS | | | |
| REV. LTR: E | BY: JLP | REVISED: 01/19/99 10:15 | TDR: 0171435 |
| 90000 | | FILE: AAA00005140 | MDL: - |
| | | MTL: - | |

BALDOR ELECTRIC Co.

3PH, DV, 9 LEADS

CD0005