

BALDOR® • RELIANCE

Product Information Packet

WALKER INDUSTRIAL PRODUCTS, INC.

EMVM3546C

.75KW,1760RPM,3PH,60HZ,D80C,3519M,TEFC,B

| Part Detail | | | | | | | |
|-------------|------|----------------|-------|-------------|----------|---------------|------------|
| Revision: | - | Status: | PRD/A | Change #: | | Proprietary: | No |
| Type: | AC | Prod. Type: | 3519M | Elec. Spec: | 35WGL315 | CD Diagram: | CD0005 |
| Enclosure: | TEFC | Mfg Plant: | | Mech. Spec: | 35M366 | Layout: | 35LYM366 |
| Frame: | D80C | Mounting: | B14 | Poles: | 04 | Created Date: | 12-15-2015 |
| Base: | N | Rotation: | R | Insulation: | F | Eff. Date: | 12-18-2015 |
| Leads: | 9#18 | | | | | Replaced By: | |
| Literature: | | Elec. Diagram: | | | | | |

| | | | | | |
|--------------------------|--------------|----------------|-------|------|---|
| Nameplate NP3386L | | | | | |
| CAT.NO. | EMVM3546C | | | | |
| SPEC. | 35M366L315G1 | | | | |
| IEC FRAME | D80C | KW | .75KW | | |
| VOLTS | 230/460 | | | | |
| AMP | 3/1.5 | | | | |
| RPM | 1760 | ENCL | TEFC | | |
| HZ | 60 | PH | 3 | CL | F |
| SER.F. | 1.15 | DES | B | CODE | L |
| NEMA-NOM-EFF | 85.5 | I.P. | 54 | | |
| RATING | 40C AMB-CONT | | | | |
| CC | 010A | USABLE AT 208V | 3.1 | | |
| DE | 6205 | ODE | 6203 | | |
| SER. # | | | | | |
| | SFA 3.4/1.7 | | | | |

| Parts List | | |
|----------------|---|----------|
| Part Number | Description | Quantity |
| SA311970 | SA 35M366L315G1 | 1.000 EA |
| RA299411 | RA 35M366L315G1 | 1.000 EA |
| 34FN3002B01 | EXTERNAL FAN, PLASTIC, .637/.639 HUB W/ | 1.000 EA |
| S/P107-000-001 | SUPER E PROC'S-FS, WS & CK PLTS | 1.000 EA |
| NS2512A01 | INSULATOR, CONDUIT BOX X | 1.000 EA |
| 35CB3007 | 35 CB CASTING W/.88 DIA. LEAD HOLE | 1.000 EA |
| 36GS1000SP | GASKET-CONDUIT BOX, .06 THICK #SV-330 LE | 1.000 EA |
| 51XB1016A07 | 10-16 X 7/16 HXWSSLD SERTYB | 2.000 EA |
| 11XW1032G06 | 10-32 X .38, TAPTITE II, HEX WSHR SLTD U | 1.000 EA |
| 35EP3100M02 | FREP TEFC 203 BRG W/O GR SR (RAISED FH MT | 1.000 EA |
| HW5100A03SP | WAVY WASHER (W1543-017) | 1.000 EA |
| 35EP1311A12 | SPL PU EP IEC D80C FOR SEAL W/ M8X1.25 M | 1.000 EA |
| HW4600B49SP | SEAL 0.938 X 1.624 X 0.250 SINGLE LIP DB | 1.000 EA |
| 51XN1032A20 | 10-32 X 1 1/4 HX WS SL SR | 2.000 EA |
| 51XB1214A16 | 12-14X1.00 HXWSSLD SERTYB | 1.000 EA |
| 35FH4005A32SP | IEC FH NO GR SR W/3 HOLES - PRIMED | 1.000 EA |
| 51XW1032A06 | 10-32 X .38, TAPTITE II, HEX WSHR SLTD S | 3.000 EA |
| 35CB4521GX | CONDUIT BOX LID KIT | 1.000 EA |
| 51XW0832A07 | 8-32 X .44, TAPTITE II, HEX WSHR SLTD SE | 4.000 EA |
| HW2504E10 | KEY, 6 MM X 1.000 | 1.000 EA |
| MJ5001A27 | 32220KN GRAY SEALER *MIN BUY 4 QTS=1GAL | 0.001 QT |
| 85XU0407S04 | 4X1/4 U DRIVE PIN STAINLESS | 2.000 EA |
| MJ1000A02 | GREASE, POLYREX EM EXXON (USe 4824-15A) | 0.050 LB |
| 51XB1214A16 | 12-14X1.00 HXWSSLD SERTYB | 1.000 EA |

| Parts List (continued) | | |
|-------------------------------|---|-----------------|
| Part Number | Description | Quantity |
| MG1000Y03 | MUNSELL 2.53Y 6.70/ 4.60, GLOSS 20, | 0.017 GA |
| HA3100A47 | THRUBOLT 10-32 X 7.625 | 4.000 EA |
| LC0005 | CONN.DIA.,TY M,9-LD,DUAL VOLT,REVERSING | 1.000 EA |
| LB1119N | WARNING LABEL | 1.000 EA |
| NP3386L | ALUM SUPER-E IEC UL CSA-EEV CC | 1.000 EA |
| 35PA1066 | PKG GRP, PRINT PK1008A06 | 1.000 EA |
| PK3082 | STYROFOAM CRADLE | 1.000 EA |

AC Induction Motor Performance Data

Record # 54480 - Typical performance - not guaranteed values

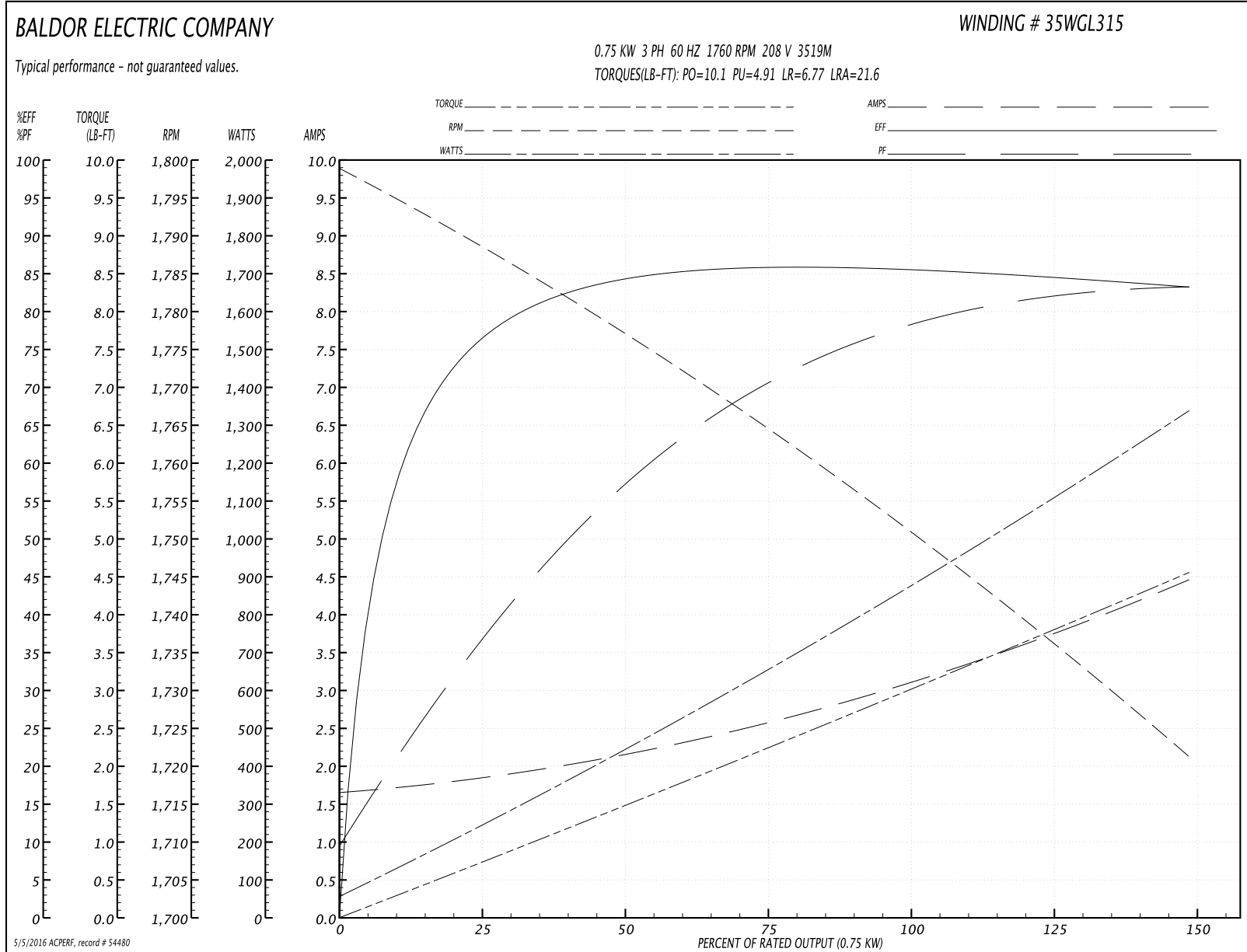
| | | |
|-------------------------------|--------------------|------------------------|
| Winding: 35WGL315-R013 | Type: 3519M | Enclosure: TEFC |
|-------------------------------|--------------------|------------------------|

| Nameplate Data | | | | 208 V, 60 Hz: Low Voltage Connection | |
|-----------------------|--------------|--------------|----|---|--------------------------|
| Rated Output (KW) | .75 | | | Full Load Torque | 2.98 LB-FT |
| Volts | 230/460 | | | Start Configuration | direct on line |
| Full Load Amps | 3/1.5 | | | Breakdown Torque | 10.1 LB-FT |
| R.P.M. | 1760 | | | Pull-up Torque | 4.91 LB-FT |
| Hz | 60 | Phase | 3 | Locked-rotor Torque | 6.77 LB-FT |
| NEMA Design Code | B | KVA Code | L | Starting Current | 21.6 A |
| Service Factor (S.F.) | 1.15 | | | No-load Current | 1.68 A |
| NEMA Nom. Eff. | 85.5 | Power Factor | 71 | Line-line Res. @ 25°C | 4.06 Ω |
| Rating - Duty | 40C AMB-CONT | | | Temp. Rise @ Rated Load | 36°C |
| S.F. Amps | 3.4/1.7 | | | Temp. Rise @ S.F. Load | 43°C |
| | | | | Rotor inertia | 0.112 LB-FT ² |

Load Characteristics 208 V, 60 Hz, 0.75 KW

| % of Rated Load | 25 | 50 | 75 | 100 | 125 | 150 | S.F. |
|-----------------|------|------|------|------|------|------|------|
| Power Factor | 37 | 58 | 70 | 77 | 81 | 84 | 79 |
| Efficiency | 75.7 | 84 | 85.7 | 85.9 | 84.8 | 83.2 | 85.2 |
| Speed | 1789 | 1777 | 1765 | 1752 | 1737 | 1721 | 1743 |
| Line amperes | 1.82 | 2.1 | 2.57 | 3.11 | 3.74 | 4.44 | 3.49 |

Performance Graph at 208V, 60Hz, 0.75KW Typical performance - Not guaranteed values



AC Induction Motor Performance Data

Record # 54482 - Typical performance - not guaranteed values

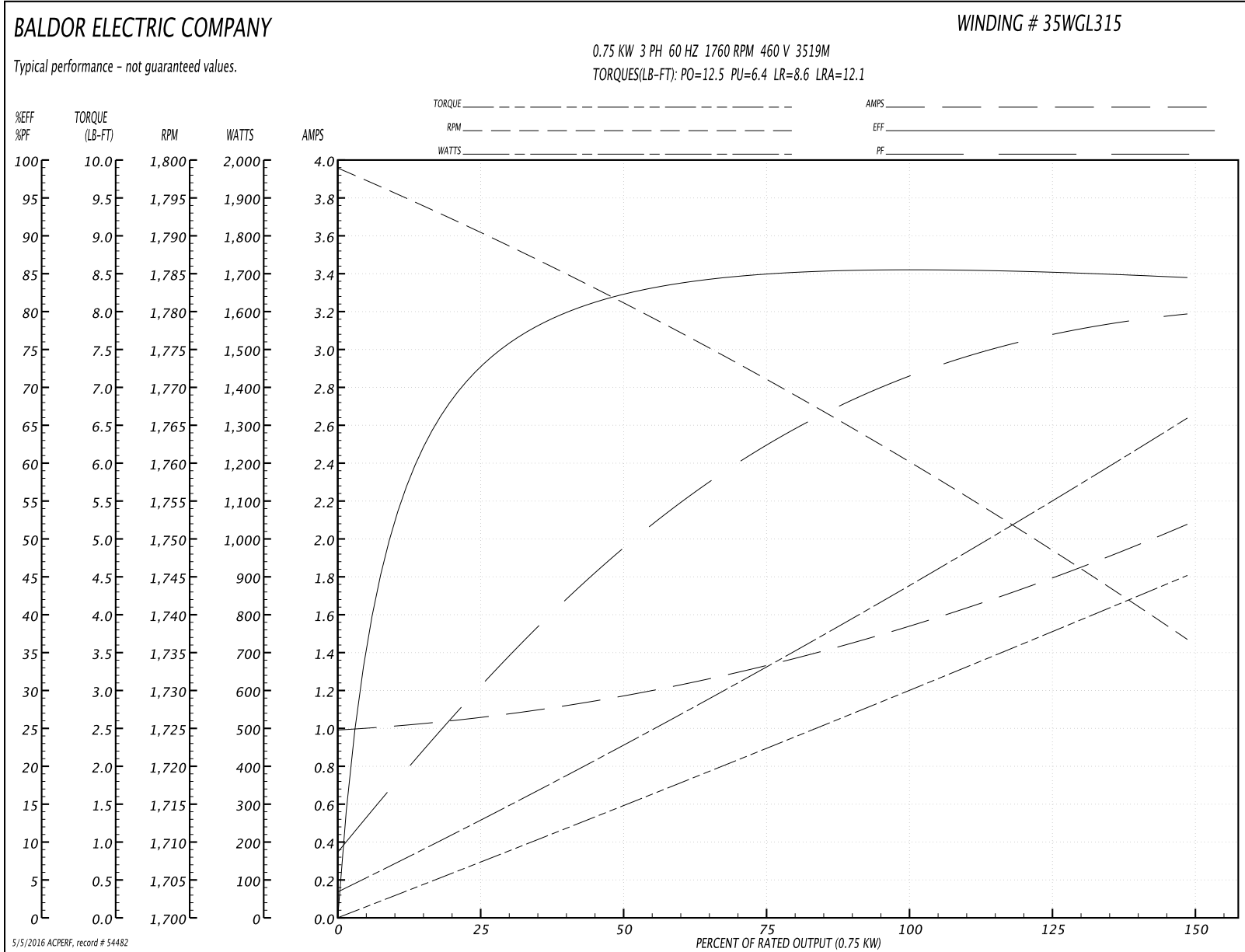
| | | |
|-------------------------------|--------------------|------------------------|
| Winding: 35WGL315-R013 | Type: 3519M | Enclosure: TEFC |
|-------------------------------|--------------------|------------------------|

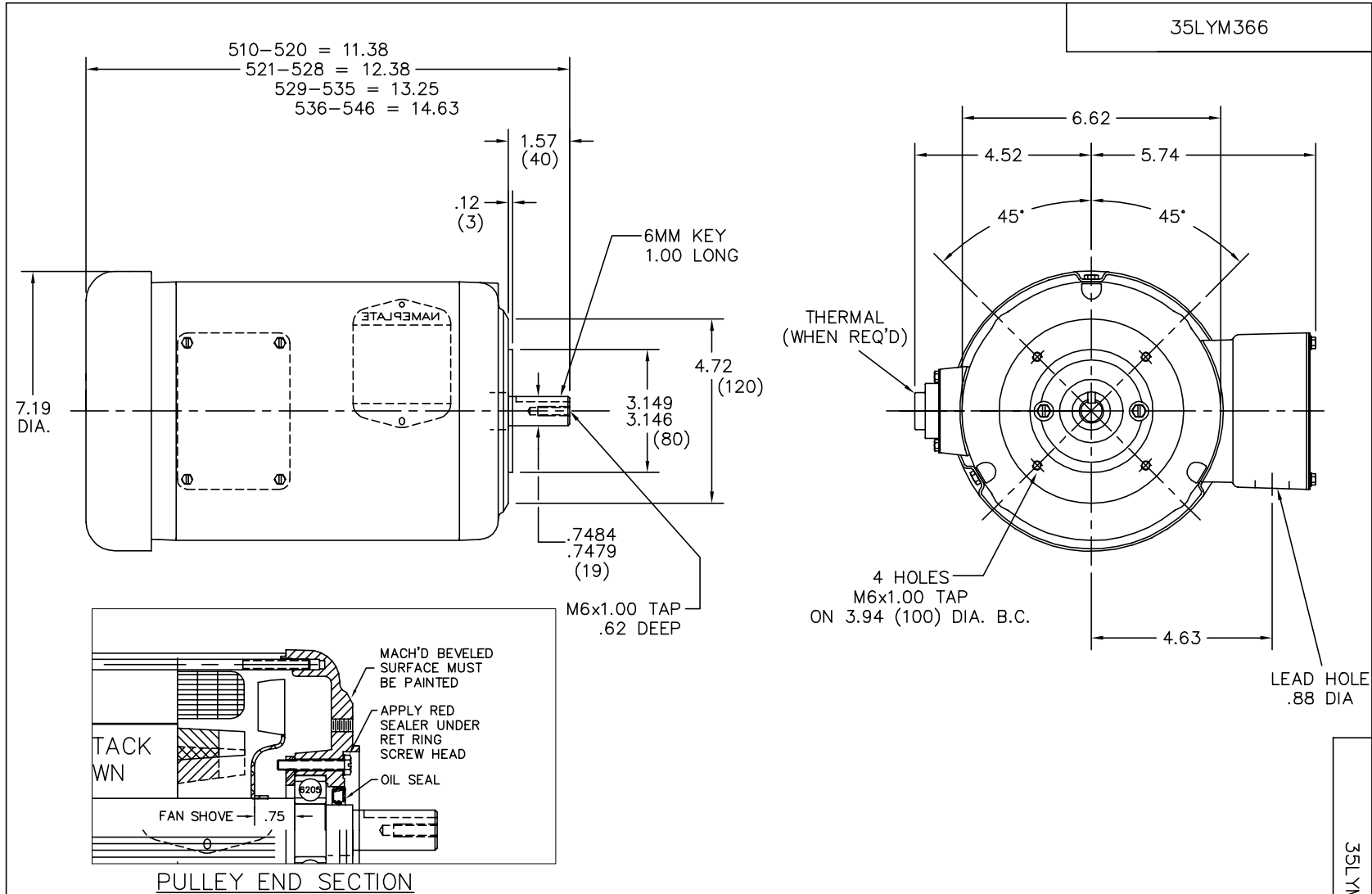
| Nameplate Data | | | | 460 V, 60 Hz: High Voltage Connection | |
|-----------------------|--------------|--------------|----|--|--------------------------|
| Rated Output (KW) | .75 | | | Full Load Torque | 2.97 LB-FT |
| Volts | 230/460 | | | Start Configuration | direct on line |
| Full Load Amps | 3/1.5 | | | Breakdown Torque | 12.5 LB-FT |
| R.P.M. | 1760 | | | Pull-up Torque | 6.4 LB-FT |
| Hz | 60 | Phase | 3 | Locked-rotor Torque | 8.6 LB-FT |
| NEMA Design Code | B | KVA Code | L | Starting Current | 12.1 A |
| Service Factor (S.F.) | 1.15 | | | No-load Current | 1 A |
| NEMA Nom. Eff. | 85.5 | Power Factor | 71 | Line-line Res. @ 25°C | 16.05 Ω |
| Rating - Duty | 40C AMB-CONT | | | Temp. Rise @ Rated Load | 36°C |
| S.F. Amps | 3.4/1.7 | | | Temp. Rise @ S.F. Load | 43°C |
| | | | | Rotor inertia | 0.112 LB-FT ² |

Load Characteristics 460 V, 60 Hz, 0.75 KW

| % of Rated Load | 25 | 50 | 75 | 100 | 125 | 150 | S.F. |
|-----------------|--------|--------|--------|--------|--------|--------|------|
| Power Factor | 31 | 49 | 62 | 71 | 77 | 80 | 75 |
| Efficiency | 72.2 | 82.1 | 84.8 | 85.6 | 85.3 | 84.4 | 85.4 |
| Speed | 1790.9 | 1781.2 | 1771.5 | 1760.7 | 1749.1 | 1736.6 | 1754 |
| Line amperes | 1.05 | 1.15 | 1.33 | 1.54 | 1.79 | 2.07 | 1.69 |

Performance Graph at 460V, 60Hz, 0.75KW Typical performance - Not guaranteed values





CUSTOMER IS RESPONSIBLE FOR DETERMINING THAT BALDOR'S PRODUCT WILL PERFORM SUITABLY IN THE INTENDED APPLICATION.

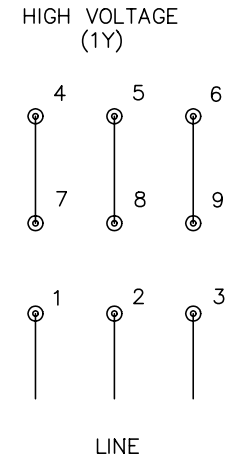
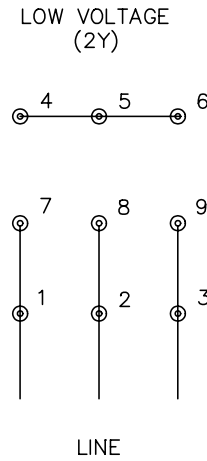
| | | |
|--|-------------|--------------------------------|
| REV. DESC: FREEZE LINE AND MOVE OIL SEAL TO CORRECT LOCATION | | |
| REV. LTR: D | VERSION: 03 | TDR: 000000705835 |
| FILE: \AAA\00009\341 | | REVISED: 09: 48: 46 08/02/2011 |
| MTL: - | | BY: ENTRUVO |

BALDOR

STD VERT IEC D80C TEFC 35M B-14 MTG W/SEAL

SH 1 of 1

CD0005



- NOTES:
1. INTERCHANGE ANY TWO LINE LEADS TO REVERSE ROTATION.
 2. OPTIONAL THERMOSTATS ARE PROVIDED WHEN SPECIFIED.
 3. ACTUAL NUMBER OF INTERNAL PARALLEL CIRCUITS MAY BE A MULTIPLE OF THOSE SHOWN ABOVE.
 4. LEAD COLORS ARE OPTIONAL. LEADS MUST ALWAYS BE NUMBERED AS SHOWN.

| | | | |
|---|---------|-------------------------|--------------|
| REV. DESC: REVISE TO SHOW OPTIONAL COLORS | | | |
| REV. LTR: E | BY: JLP | REVISED: 01/19/99 10:15 | TDR: 0171435 |
| 9000D | | FILE: AAA00005140 | MDL: - |
| | | MTL: - | |

BALDOR ELECTRIC Co.

3PH, DV, 9 LEADS

CD0005