

BALDOR® • *RELIANCE*

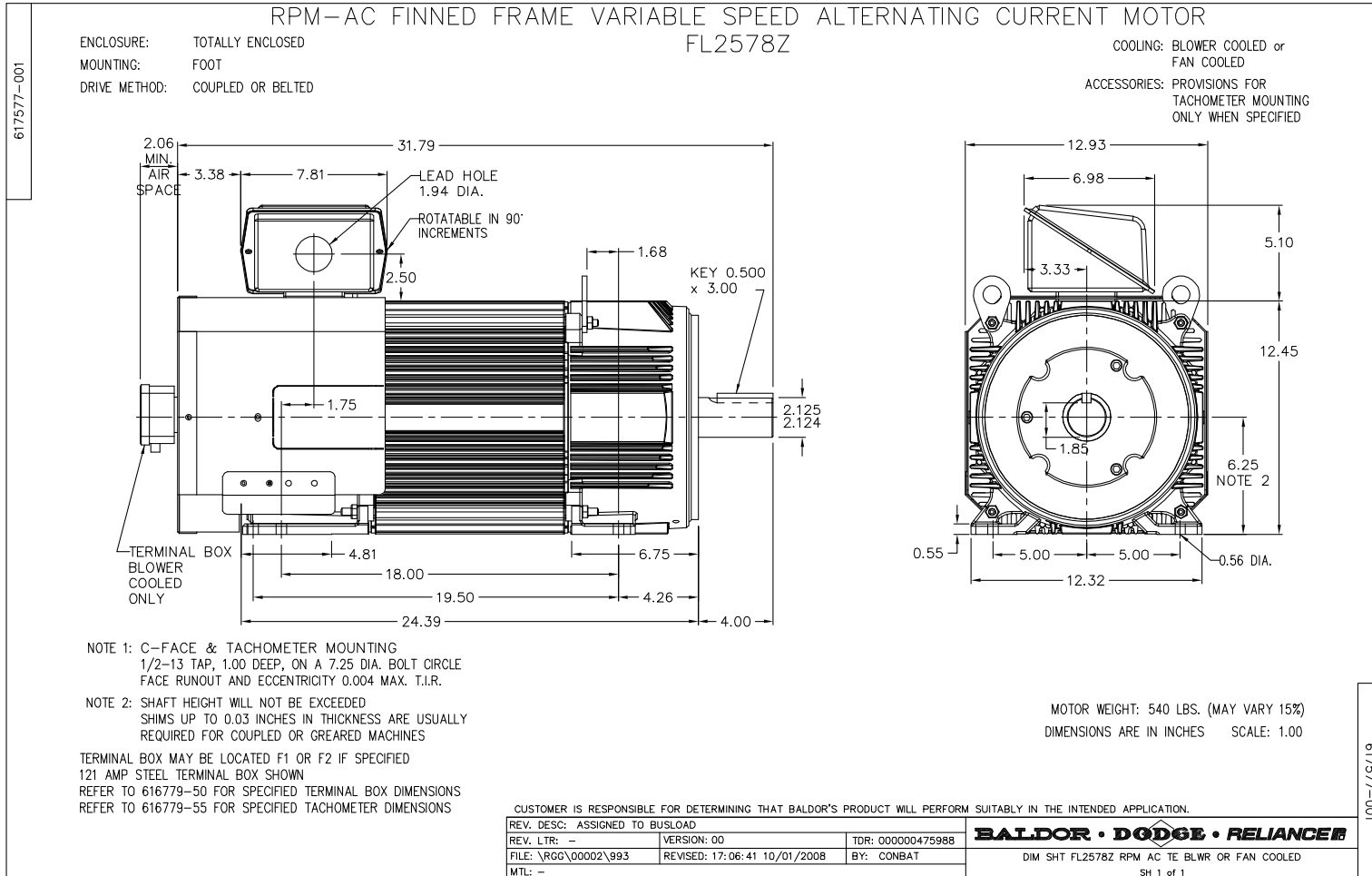
Product Information Packet

IDBRPM25604

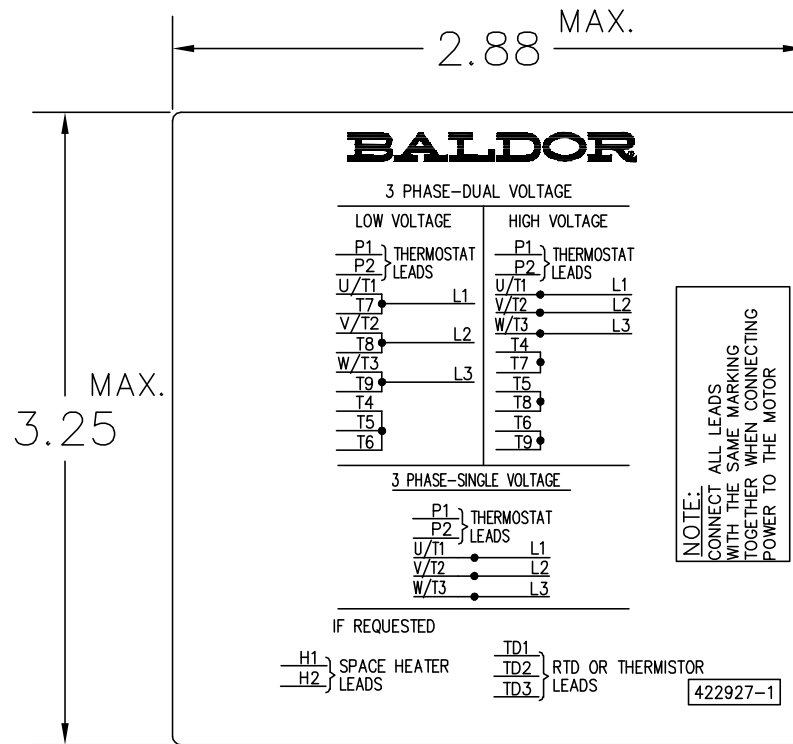
60 HP 1750 TEBC FL2578 460V

Copyright © All product information within this document is subject to Baldor Electric Company copyright © protection, unless otherwise noted.

Part Detail			
Model Number:	IDBRPM25604	Environment:	General Purpose
Voltage:	460	HP:	60
RPM:	1775/3540	Efficiency:	NA
Phase:	3	Frequency:	N/A
Inverter Duty:	Y	Enclosure:	TEBC
Frame Group:	250	Frame Size:	FL2578Z
Features:	RPM AC	Mounting:	Foot Mounted
Service Factor:	1	Enclosure Group:	TEBC
Weight:	0	Price Symbol:	E2
Speed Range:		Insulation Class:	H
Nema Design:		Encl. Enhancement:	
Catalog Page:	B-194	Dimension Sheet:	617577-1
Connection Diagram:	422927-1	Electric Design:	L3381A
Single HP:	60	Get Notes:	RPM AC
Revision:		Instruction Manual:	
Application:	Variable Speed-V*S	Epact:	
Scaled Drawing:		Obsolete:	N
Last Data Source:	RGG,MADD	Bearing Type:	
Electrical Type:		Mounting Pos.:	
Ambient:	40	Duty:	
Amps:		Nominal Eff.:	
Kva Code:		Power Factor:	
Poles:	00	Literature:	



422927-001



NOTE:
DATA TO BE SIZED
SO THAT IT FITS INTO
MATERIAL DECAL
DIMENSIONS. MAKE
LETTERS & NUMBERS
AS LARGE AS POSSIBLE.

MATERIAL: CERAMATIC DGF-P4
PERMA GRIP ADHESIVE

ALL LETTERS, NUMBERS
AND LINES TO BE BLACK
ON GOLD BACKGROUND.

NOTE:
CONNECT ALL LEADS
WITH THE SAME MARKING
TOGETHER WHEN CONNECTING
POWER TO THE MOTOR

422927-1

422927-001

REV. DESC: CHANGE LOGO TO BALDOR		
REV. LTR: A	VERSION: 01	TDR: 000000556744
FILE: \RGG\00000\203	REVISED: 02:51:59 09/02/2010	
MTL: -	BY: RGGWT	

BALDOR
EXTERNAL CONNECTION LABEL
SH 1 of 1

REL. S.O.	-	VOLTS	460	ENCLOSURE	TEBC	WYE CONN EQ CKT OHMS PER PHASE (AT BASE RATING, 25 °C)
FRAME	FL2578	AMPS	75	MAX SAFE RPM	5000	
HP	60	DUTY	CONT	IM (AMPS)	35	R1 .0612 X1 .309
BASE SPEED	1775	S.F.	1.0	P.F.@NL/FL	.048/.819	R2 .0409 X2 .427
PHASE/HERTZ	3/60	AMB °C/INSUL	40/H	WK ² (LB-FT ²)	4.2	XM 7.77

RATED FULL LOAD DATA


	RPM	HP	TORQUE LB-FT	FUND VOLTS	FREQ-HZ	AMPS
BASE SPEED	1774	60.0	178	460	60	75.0
MAX SPEED	3542	60.0	89	460	120	71.2
MIN SPEED	0	0	178	13.4	.865	75.0

LOAD PERFORMANCE AT BASE SPEED

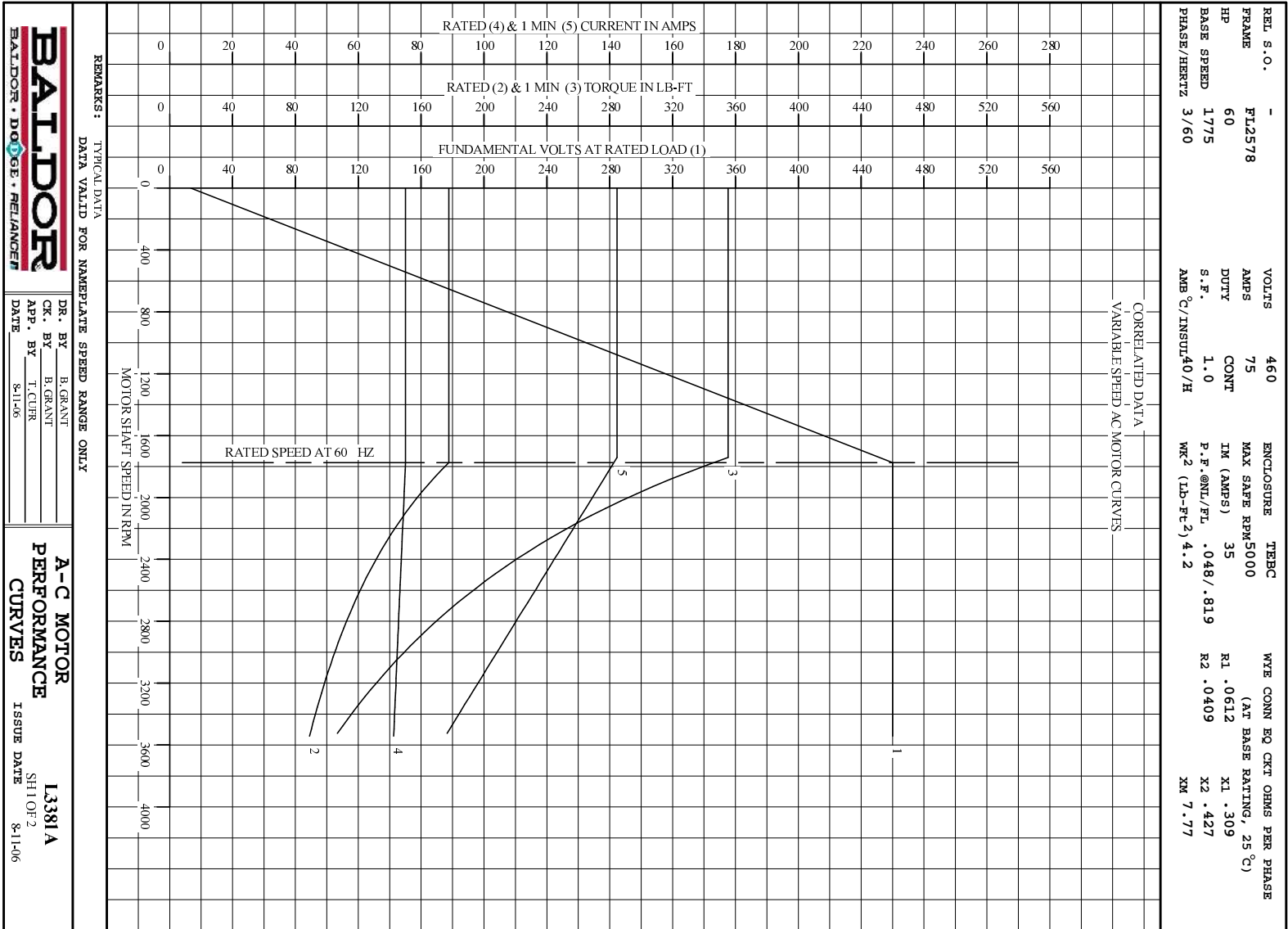
	RPM	HP	TORQUE LB-FT	FUND VOLTS	FREQ-HZ	AMPS
NO LOAD	1800	0	0	460	60	34.3
1/4	1794	15.0	44	460	60	38.9
1/2	1788	30.0	88	460	60	48.1
3/4	1781	45.0	133	460	60	60.6
FULL LOAD	1774	60.0	178	460	60	75.0
O/L	1742	118	355	460	60	142

BLOWER DATA	VOLTS	PH/HZ	FL AMPS	LR AMPS	FRAME	CFM

REMARKS: TYPICAL DATA
CORRELATED DATA

	DR. BY	B. GRANT	A-C MOTOR PERFORMANCE DATA
	CK. BY	T. CURR	
	APP. BY	8-11-06	
	DATE	8-11-06	

ISSUE DATE 8-11-06



REMARKS: TYPICAL DATA

DATA VALID FOR NAMEPLATE SPEED RANGE ONLY

BALDOR

BALDOR • DOUGLASS • RELIANCE

DR. BY B. GRANT

CK. BY B. GRANT

APP. BY T. CURR

DATE 8-11-06

A-C MOTOR

PERFORMANCE

CURVES

ISSUE DATE 8-11-06

L3381A

SH1 OF 2

