

# **BALDOR**® • *RELIANCE*

## **Product Information Packet**

# **IDCSWDM3558T**

**2HP, 1750RPM, 3PH, 60HZ, 145TC, 3528M, TEFC, F1**

Copyright © All product information within this document is subject to Baldor Electric Company copyright © protection, unless otherwise noted.

| Part Detail       |               |             |         |                |          |               |            |
|-------------------|---------------|-------------|---------|----------------|----------|---------------|------------|
| Revision:         | K             | Status:     | PRD/A   | Change #:      |          | Proprietary:  | No         |
| Type:             | AC            | Prod. Type: | 3528M   | Elec. Spec:    | 35WGP562 | CD Diagram:   |            |
| Enclosure:        | TEFC          | Mfg Plant:  |         | Mech. Spec:    | 35SS633  | Layout:       |            |
| Frame:            | 145TC         | Mounting:   | F1      | Poles:         | 04       | Created Date: | 12-22-2009 |
| Base:             | RG            | Rotation:   | R       | Insulation:    | H        | Eff. Date:    | 10-16-2012 |
| Leads:            | 9#18          | Literature: |         | Elec. Diagram: |          | Replaced By:  |            |
| Nameplate NP1608L |               |             |         |                |          |               |            |
| CAT NO            | IDCSWDM3558T  |             |         |                |          |               |            |
| SPEC.             | 35SS633P562G1 |             |         |                |          |               |            |
| FRAME             | 145TC         | HP          | 2       | TE             |          |               |            |
| VOLTS             | 230/460       |             |         |                |          |               |            |
| MAG CUR           | 3.4/1.7       | FLA         | 5.8/2.9 |                |          |               |            |
| RPM               | 1750          | RPM MAX     | 4500    |                |          |               |            |
| HZ                | 60            | PH          | 3       | CLASS          | H        |               |            |
| SER.F.            | 1.00          | DES         | B       | SL HZ          | 1.7      |               |            |
| NEMA-NOM-EFF      | 86.5          | WK2         | 0.165   |                |          |               |            |
| BLWR V            |               | PH          |         | HZ             |          | A             |            |
| RATING            | 40C AMB-CONT  |             |         |                |          |               |            |
| DE BRG            | 6205          | ODE BRG     | 6203    |                |          |               |            |
| CC                | 010A          | SN          |         |                |          |               |            |
|                   |               |             |         |                |          |               |            |

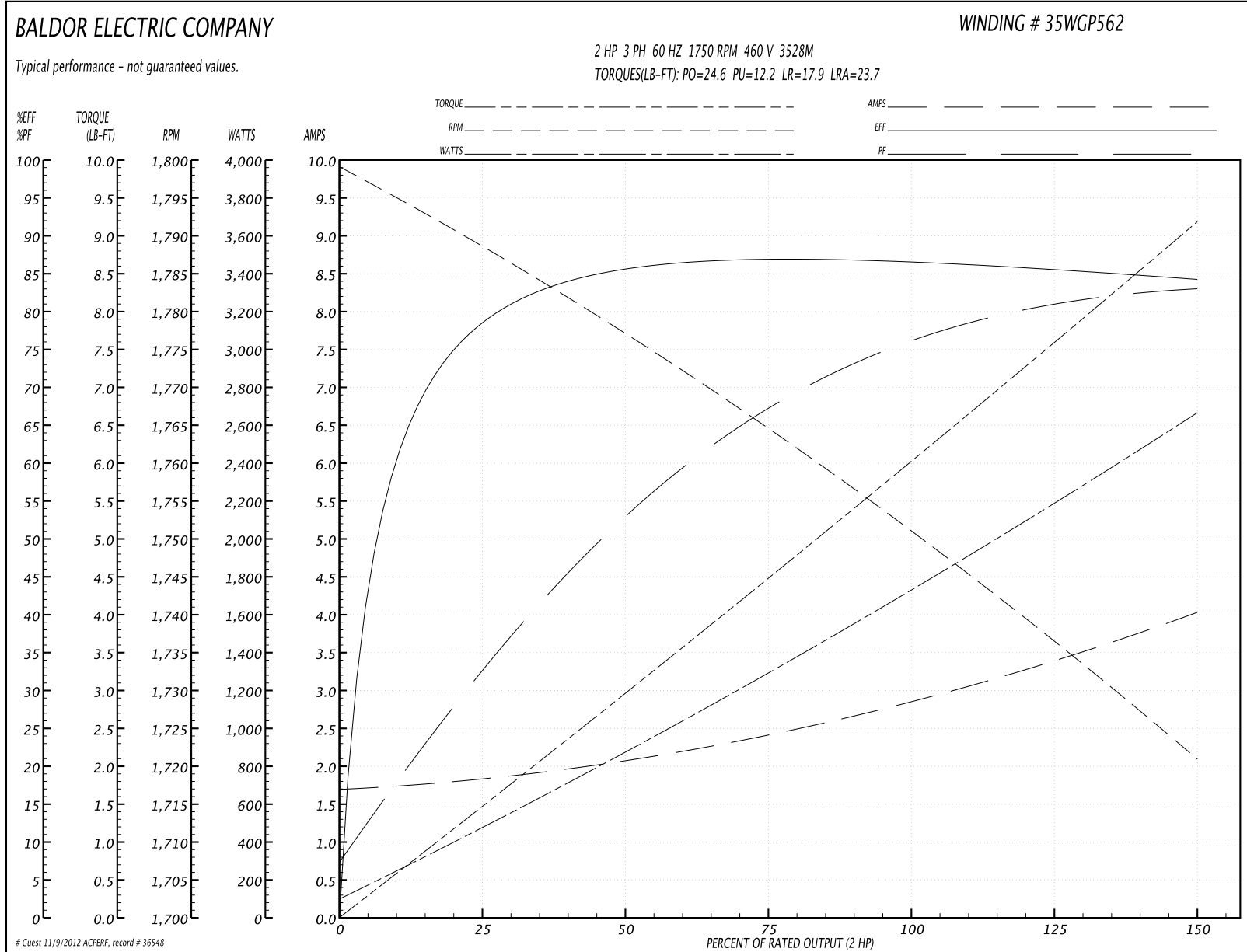
| Parts List    |  |          |
|---------------|--|----------|
| Part Number   | Description                              | Quantity |
| SA189055      | SA 35SS633P562G1                         | 1.000 EA |
| RA176774      | RA 35SS633P562G1                         | 1.000 EA |
| NS2512A01     | INSULATOR, CONDUIT BOX X                 | 1.000 EA |
| 35CB5001A21   | CONDUIT BOX KIT, FOR SUPER II WASHDOWN   | 1.000 EA |
| 11XW1032G06   | 10-32 X .38, TAPTITE II, HEX WSHR SLTD U | 1.000 EA |
| 35EP3100M08MU | FREP TEFC 203 BRG NO GRSSR, BALL BURNISH | 1.000 EA |
| HW4500A33     | 1/8 NPT STAINLESS,HOLO-KROME #13002,PRES | 3.000 EA |
| HW5100A03SP   | WAVY WASHER (W1543-017)                  | 1.000 EA |
| 35EP3300A75MU | PU E.P., CAST-FACE MTD-56C-205 BRG(BALL  | 1.000 EA |
| HW4500A33     | 1/8 NPT STAINLESS,HOLO-KROME #13002,PRES | 3.000 EA |
| HW4606A02     | JM CLIPPER/SEAL (LWE-0938-1624-AL23)     | 1.000 EA |
| 12XN1032S20   | 10-32 X 1-1/4 HEX M.S. , STAINLESS STEEL | 2.000 EA |
| HA1049A01     | DUBO LOK WASHER SIZE 10 (NYLON LOCK SEAL | 2.000 EA |
| HA1049A01     | DUBO LOK WASHER SIZE 10 (NYLON LOCK SEAL | 4.000 EA |
| 51XB1214A16   | 12-14X1.00 HXWSSLD SERTYB                | 1.000 EA |
| 35FH4005A53   | IEC FH NO GREASER (CLEAN ONLY)           | 1.000 EA |
| 11XW1032S06   | 10-32 X .38, TAPTITE II, HEX WSHR SLTD U | 3.000 EA |
| HA1005A05SP   | SLINGER, OD 1.50, ID .659, 203 BRG       | 1.000 EA |
| HW2502D13     | SS KEY, 3/16 SQ X 1.375                  | 1.000 EA |
| HA7000A01     | KEY RETAINER 7/8" DIA SHAFT              | 1.000 EA |
| MJ5001A02     | 732 CL SEALANT 3 OZ DIXIE BEARING 289100 | 0.001 EA |
| 85XU0407S04   | 4X1/4 U DRIVE PIN STAINLESS              | 2.000 EA |
| LB1164        | LABEL,WARNING AND DRAIN                  | 1.000 EA |
| HA5027A04     | HA4054 T-DRAIN X2 BAGGED                 | 1.000 EA |

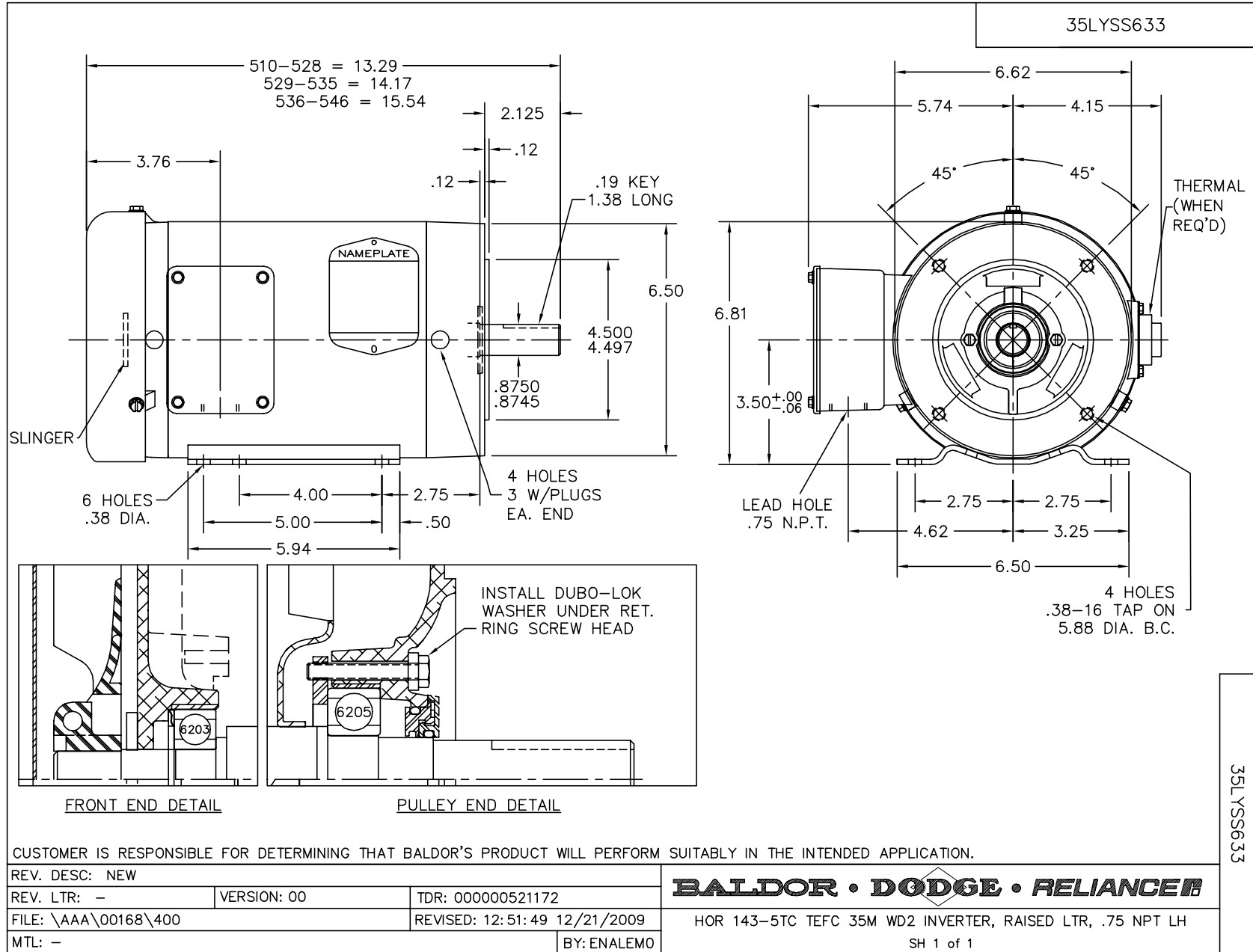
| Parts List (continued) |  |          |
|------------------------|--|----------|
| Part Number            | Description                              | Quantity |
| MJ1000A75              | GREASE, POLYREX EM EXXON                 | 0.050 LB |
| 35FN3002A05SP          | EXFN, PLASTIC, 6.376 OD, .638 ID         | 1.000 EA |
| HA3100S24              | THRUBOLT 8.625 LENGTH 1.250 TH LENGTH SS | 4.000 EA |
| LB1172A01              | CUSTOM MTR CARTON LABEL LASER PRINTER    | 1.000 EA |
| LC0145B01              | CONNECTION LABEL                         | 1.000 EA |
| NP1608L                | SS WD INV UL CSA CC REV MTG              | 1.000 EA |
| 36PA1000               | PACK GROUP W/LB5001                      | 1.000 EA |

**Performance Data at 460V, 60Hz, 2.0HP (Typical performance - Not guaranteed values)**

| General Characteristics  |                                |        |        |                      |            |        |      |
|--------------------------|--------------------------------|--------|--------|----------------------|------------|--------|------|
| Full Load Torque:        | 6.01 LB-FT                     |        |        | Start Configuration: | DOL        |        |      |
| No-Load Current:         | 1.72 Amps                      |        |        | Break-Down Torque:   | 24.6 LB-FT |        |      |
| Line-line Res. @ 25°C.:  | 7.66 Ohms A Ph / 0.0 Ohms B Ph |        |        | Pull-Up Torque:      | 12.2 LB-FT |        |      |
| Temp. Rise @ Rated Load: | 75 C                           |        |        | Locked-Rotor Torque: | 17.9 LB-FT |        |      |
| Temp. Rise @ S.F. Load:  | 90 C                           |        |        | Starting Current:    | 23.7 Amps  |        |      |
| Load Characteristics     |                                |        |        |                      |            |        |      |
| % of Rated Load          | 25                             | 50     | 75     | 100                  | 125        | 150    | S.F. |
| Power Factor:            | 33.0                           | 53.0   | 67.0   | 75.0                 | 80.0       | 84.0   | 0.0  |
| Efficiency:              | 77.7                           | 85.4   | 86.9   | 86.6                 | 85.8       | 84.2   | 0.0  |
| Speed:                   | 1789.0                         | 1778.0 | 1765.0 | 1751.0               | 1737.0     | 1721.0 | 0.0  |
| Line Amperes:            | 1.8                            | 2.04   | 2.39   | 2.88                 | 3.39       | 4.01   | 0.0  |

Performance Graph at 460V, 60Hz, 2.0HP Typical performance - Not guaranteed values





CD0005

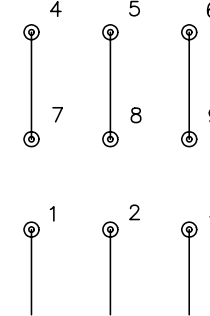


LOW VOLTAGE  
(2Y)



LINE

HIGH VOLTAGE  
(1Y)



LINE

NOTES:

1. INTERCHANGE ANY TWO LINE LEADS TO REVERSE ROTATION.
2. OPTIONAL THERMOSTATS ARE PROVIDED WHEN SPECIFIED.
3. ACTUAL NUMBER OF INTERNAL PARALLEL CIRCUITS MAY BE A MULTIPLE OF THOSE SHOWN ABOVE.
4. LEAD COLORS ARE OPTIONAL. LEADS MUST ALWAYS BE NUMBERED AS SHOWN.

REV. DESC: REVISE TO SHOW OPTIONAL COLORS

REV. LTR: E BY: JLP

REVISED: 01/19/99 10:15

TDR: 0171435

900000

FILE: AAA00005140

MDL: -

MTL: -

**BALDOR ELECTRIC Co.**

3PH, DV, 9 LEADS

CD0005