

# **BALDOR**® • **RELIANCE**

## **Product Information Packet**

# **IDCSWDM3615T**

**5HP, 1750RPM, 3PH, 60HZ, 184TC, 3646M, TEFC, F1**

Copyright © All product information within this document is subject to Baldor Electric Company copyright © protection, unless otherwise noted.

Part Detail							
Revision:	A	Status:	PRD/A	Change #:		Proprietary:	No
Type:	AC	Prod. Type:	3646M	Elec. Spec:	36WGS719	CD Diagram:	
Enclosure:	TEFC	Mfg Plant:		Mech. Spec:	36K201	Layout:	
Frame:	184TC	Mounting:	F1	Poles:	04	Created Date:	06-04-2012
Base:	RG	Rotation:	R	Insulation:	H	Eff. Date:	09-20-2012
Leads:	9#16	Literature:		Elec. Diagram:		Replaced By:	

Nameplate NP1608L							
CAT NO	IDCSWDM3615T						
SPEC.	36K201S719G1						
FRAME	184TC	HP	5	TE			
VOLTS	230/460						
MAG CUR	5.8/2.9	FLA	13/6.5				
RPM	1750	RPM MAX	6000				
HZ	60	PH	3	CLASS	H		
SER.F.	1.00	DES	B	SL HZ	1.7		
NEMA-NOM-EFF	89.5	WK2	0.428				
BLWR V		PH		HZ		A	
RATING	40C AMB-CONT						
DE BRG	6206	ODE BRG	6205				
CC	010A	SN					

Parts List		
Part Number	Description	Quantity
SA245911	SA 36K201S719G1	1.000 EA
RA232796	RA 36K201S719G1	1.000 EA
36FN3000A01SP	EXFN, PLASTIC, 7.00 OD, .912 ID	1.000 EA
36CB2000A06MU	CONDUIT BOX, MACH W/.75 NPT, BALL BURNIS	1.000 EA
37GS3011	1/8"WHITE NEOPRENE BOX GS	1.000 EA
51XB1016A08	10-16X 1/2HXWSSLD SERTYB	2.000 EA
11XW1032G06	10-32 X .38, TAPTITE II, HEX WSHR SLTD U	1.000 EA
HW3001B01	003SS CUP WASHER, FOR #8 SCREW	1.000 EA
36EP3101B27MU	FR EP,205 BRG-ENCL, (FOR S.P. #9D)	1.000 EA
HW4500A33	1/8 NPT STAINLESS,HOLO-KROME #13002,PRES	3.000 EA
HW5100A05	WVY WSHR F/205 & 304 BRGS	1.000 EA
36EP3301A32MU	PU EP,182-4TC 206 BRG OIL SEAL NO GSR-BA	1.000 EA
HW4500A33	1/8 NPT STAINLESS,HOLO-KROME #13002,PRES	3.000 EA
10XN2520S28	1/4-20X 1 3/4 HEX HD SS X	4.000 EA
HA1049A02	DUBO LOK WASHER SIZE 1/4 (NYLON LOCK SEA	4.000 EA
HA1049A02	DUBO LOK WASHER SIZE 1/4 (NYLON LOCK SEA	4.000 EA
51XB1214A16	12-14X1.00 HXWSSLD SERTYB	1.000 EA
36FH4011	WASHDOWN FAN COVER #304 STAINLESS W/NOTC	1.000 EA
11XB1016S07	10-16X7/16HX WS SLD TYP BTDR 13817	3.000 EA
36CB4517	36 LIPPED CB LID #304 STAINLESS STEEL	1.000 EA
37GS3010SP	1/16"WHITE LID GASKET	1.000 EA
59XW0832S07	TAPTITE II,HEX WSHR UNSLTD SER,410 S.S.,	4.000 EA
HW1003S08	WASHER, #8 EX TH LK, SS	4.000 EA
HA1005A03SP	SLINGER, OD 1.750, ID .938, 205 BRG	1.000 EA

Parts List (continued)		
Part Number	Description	Quantity
HW4606A03	JM CLIPPER/SEAL (LWE-1156-1875-AL44)	1.000 EA
HW2502E16	#303 SS,SQ KEY 1/4 X 1.750	1.000 EA
HA7000A02	KEY RETAINER RING, 1 1/8 DIA, 1 3/8 DIA	1.000 EA
MJ5001A02	732 CL SEALANT 3 OZ DIXIE BEARING 289100	0.001 EA
85XU0407S04	4X1/4 U DRIVE PIN STAINLESS	2.000 EA
LB1164	LABEL,WARNING AND DRAIN	1.000 EA
HW3200S01	EYEBOLT 3/8-16 X3/4 S.S. TDR #35988	1.000 EA
MJ1000A75	GREASE, POLYREX EM EXXON	0.050 LB
LB1115	LABEL,LIFTING DEVICE	1.000 EA
HA3101S40	THRUBOLT 1/4-20 X 12.687	4.000 EA
LB1125C01	STD (STOCK) CARTON LABEL BALDOR WITH FLA	1.000 EA
LC0145B01	CONNECTION LABEL	1.000 EA
NP1608L	SS WD INV UL CSA CC REV MTG	1.000 EA
36PA1001	PACKAGING GROUP	1.000 EA

**Performance Data at 460V, 60Hz, 5.0HP (Typical performance - Not guaranteed values)**

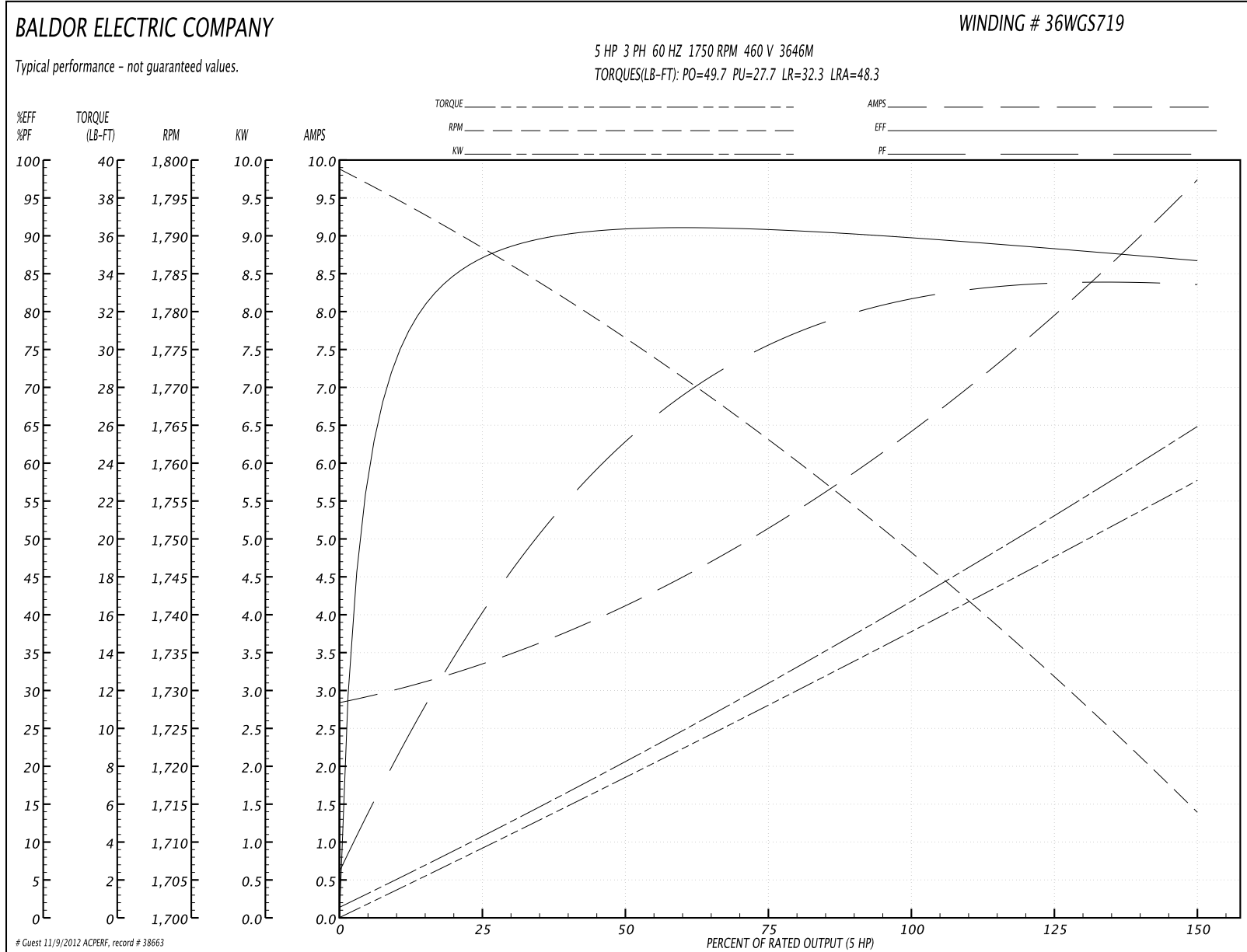
**General Characteristics**

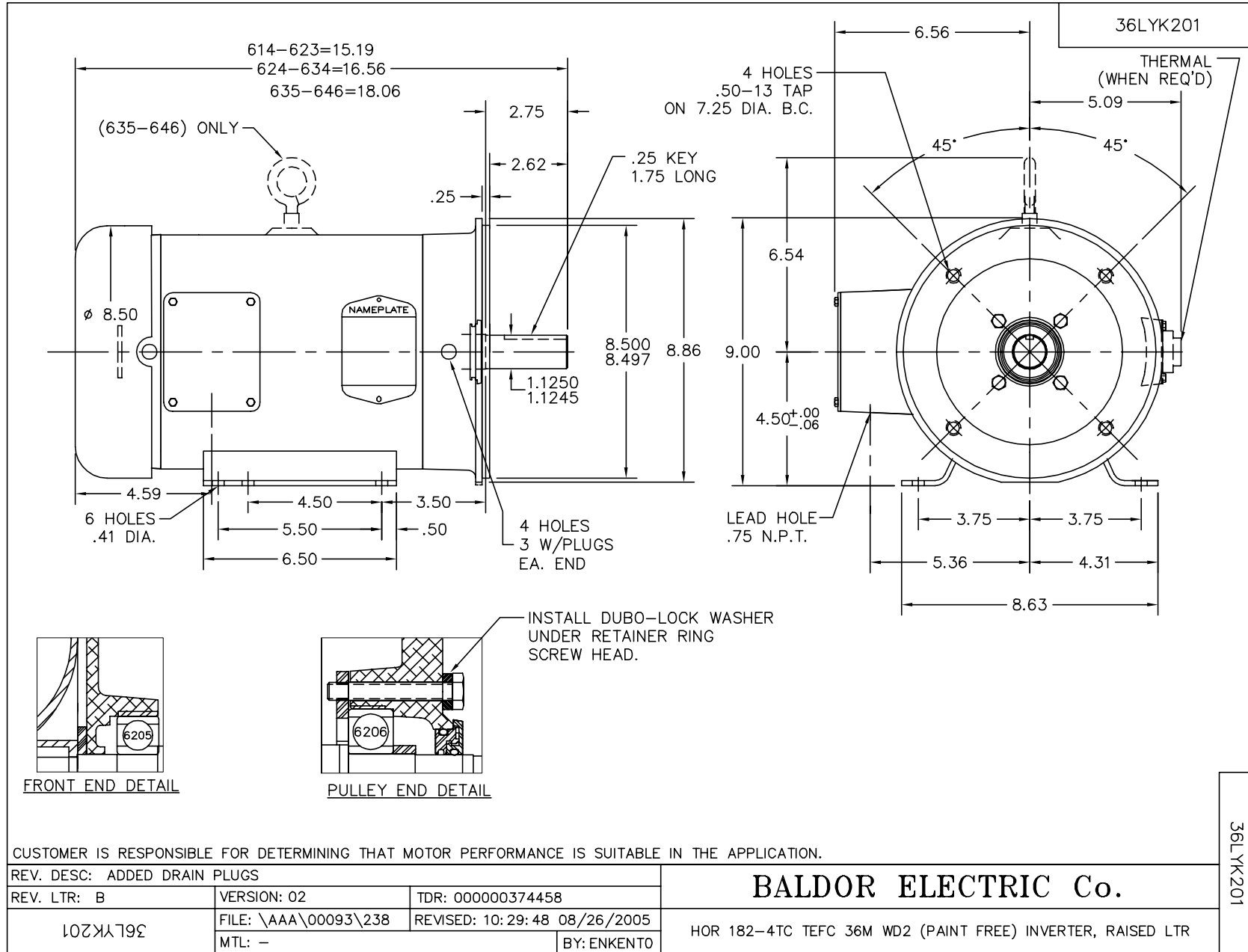
<b>Full Load Torque:</b>	15.2 LB-FT	<b>Start Configuration:</b>	DOL
<b>No-Load Current:</b>	2.91 Amps	<b>Break-Down Torque:</b>	49.7 LB-FT
<b>Line-line Res. @ 25°C.:</b>	2.3457 Ohms A Ph / 0.0 Ohms B Ph	<b>Pull-Up Torque:</b>	27.7 LB-FT
<b>Temp. Rise @ Rated Load:</b>	87 C	<b>Locked-Rotor Torque:</b>	32.3 LB-FT
<b>Temp. Rise @ S.F. Load:</b>		<b>Starting Current:</b>	48.3 Amps

**Load Characteristics**

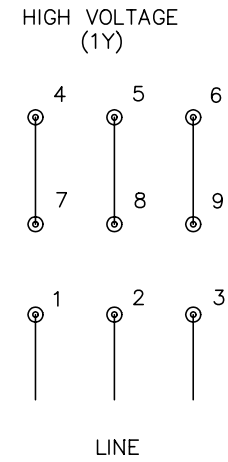
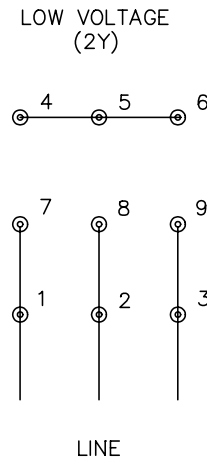
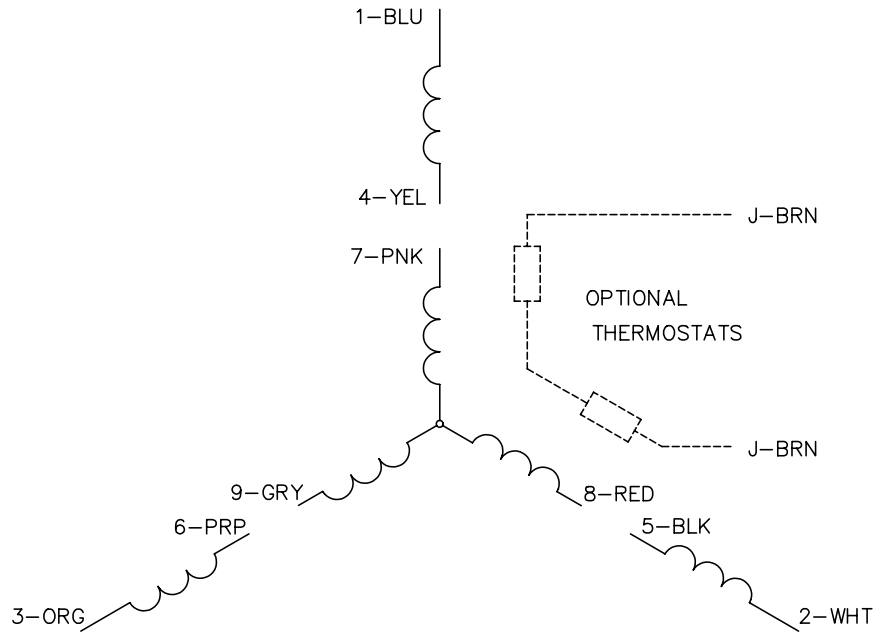
<b>% of Rated Load</b>	<b>25</b>	<b>50</b>	<b>75</b>	<b>100</b>	<b>125</b>	<b>150</b>	<b>S.F.</b>
<b>Power Factor:</b>	42.0	64.0	75.0	81.0	83.0	84.0	0.0
<b>Efficiency:</b>	86.6	90.5	90.7	89.8	88.4	86.5	0.0
<b>Speed:</b>	1788.2	1775.9	1762.8	1747.9	1731.9	1713.7	0.0
<b>Line Amperes:</b>	3.27	4.1	5.2	6.49	8.02	9.69	0.0

Performance Graph at 460V, 60Hz, 5.0HP Typical performance - Not guaranteed values





CD0005



NOTES:

1. INTERCHANGE ANY TWO LINE LEADS TO REVERSE ROTATION.
2. OPTIONAL THERMOSTATS ARE PROVIDED WHEN SPECIFIED.
3. ACTUAL NUMBER OF INTERNAL PARALLEL CIRCUITS MAY BE A MULTIPLE OF THOSE SHOWN ABOVE.
4. LEAD COLORS ARE OPTIONAL. LEADS MUST ALWAYS BE NUMBERED AS SHOWN.

REV. DESC: REVISE TO SHOW OPTIONAL COLORS			
REV. LTR: E	BY: JLP	REVISED: 01/19/99 10:15	TDR: 0171435
90000		FILE: AAA00005140	MDL: -
		MTL: -	

**BALDOR ELECTRIC Co.**

3PH, DV, 9 LEADS

CD0005