

BALDOR® • *RELIANCE*

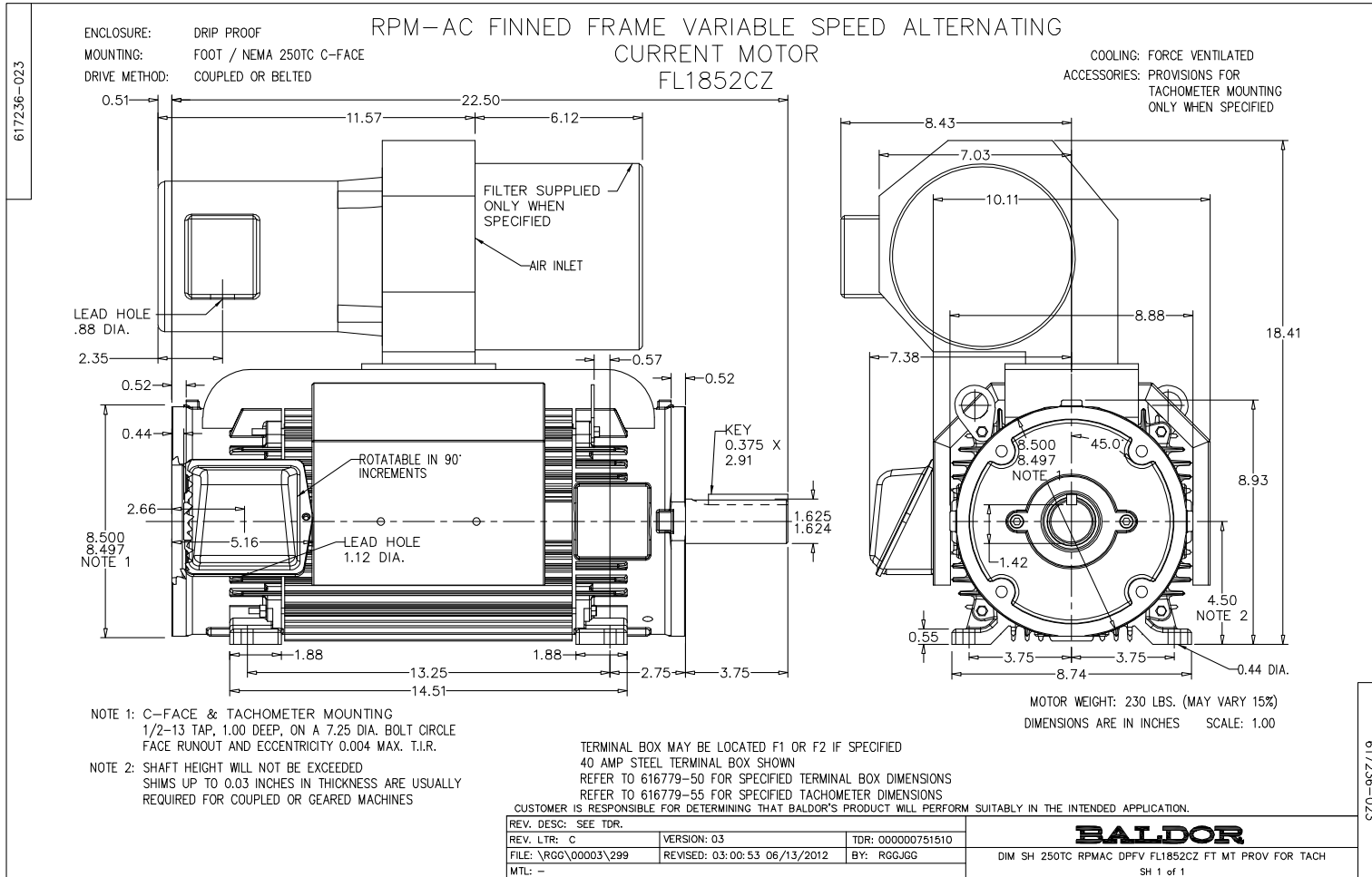
Product Information Packet

IDDRPM18304C

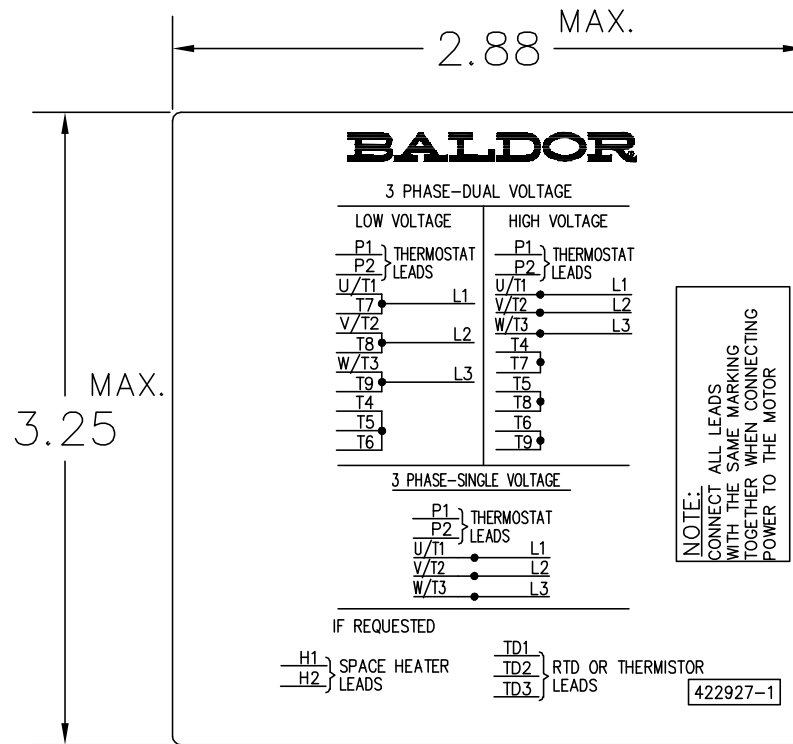
30HP,1745RPM,3PH,60HZ,1852C,DPG-FV,FT/2

Copyright © All product information within this document is subject to Baldor Electric Company copyright © protection, unless otherwise noted.

Part Detail			
Model Number:	IDDRPM18304C	Environment:	General Purpose
Voltage:	460	HP:	30
RPM:	1745/3475	Efficiency:	NA
Phase:	3	Frequency:	N/A
Inverter Duty:	Y	Enclosure:	DPFV
Frame Group:	180	Frame Size:	FL1852CZ
Features:	RPM AC	Mounting:	Foot Mounted
Service Factor:	1	Enclosure Group:	DPG-FV
Weight:	0	Price Symbol:	E2
Speed Range:		Insulation Class:	H
Nema Design:		Encl. Enhancement:	
Catalog Page:	M-213,	Dimension Sheet:	617236-23
Connection Diagram:	422927-1	Electric Design:	L1206A
Single HP:	30	Get Notes:	RPM AC
Revision:		Instruction Manual:	
Application:	Variable Speed-V*S	Epact:	?
Scaled Drawing:		Obsolete:	N
Last Data Source:	RGG,MADD	Bearing Type:	
Electrical Type:		Mounting Pos.:	
Ambient:	40	Duty:	
Amps:		Nominal Eff.:	
Kva Code:		Power Factor:	
Poles:	00	Literature:	



422927-001



NOTE:
DATA TO BE SIZED
SO THAT IT FITS INTO
MATERIAL DECAL
DIMENSIONS. MAKE
LETTERS & NUMBERS
AS LARGE AS POSSIBLE.

MATERIAL: CERAMATIC DGF-P4
PERMA GRIP ADHESIVE
ALL LETTERS, NUMBERS
AND LINES TO BE BLACK
ON GOLD BACKGROUND.

422927-001

REV. DESC: CHANGE LOGO TO BALDOR		
REV. LTR: A	VERSION: 01	TDR: 000000556744
FILE: \RGG\00000\203	REVISED: 02:51:59 09/02/2010	
MTL: -	BY: RGGWT	

BALDOR

EXTERNAL CONNECTION LABEL

SH 1 of 1

REL. S. O.	-	VOLTS	460	ENCLOSURE	DPFV	WYE CONN EQ CKT OHMS PER PHASE
FRAME	FL1852	AMPS	39	MAX SAFE RPM	7200	(AT BASE RATING, 25 °C)
HP	30	DUTY	CONT	IM (AMPS)	17.5	R1 .211 X1 .727
BASE SPEED	1745	S.F.	1.0	P.F. @NL/FL	.080/.838	R2 .155 X2 .743
PHASE/HERTZ	3/60	AMB °C/INSUL	40/H	WK ² (LB-FT ²)	.8	XM 12.7


RATED FULL LOAD DATA

	RPM	HP	TORQUE LB-FT	FUND VOLTS	FREQ-HZ	AMPS
BASE SPEED	1745	30.0	90	460	60	41.2
MAX SPEED	3473	30.0	45	460	120	38.7
MIN SPEED	0	0	90	26.2	1.83	41.2

LOAD PERFORMANCE AT BASE SPEED

	RPM	HP	TORQUE LB-FT	FUND VOLTS	FREQ-HZ	AMPS
NO LOAD	1800	0	0	460	60	21.2
1/4	1787	7.75	23	460	60	23.2
1/2	1774	15.5	46	460	60	27.7
3/4	1759	23.2	69	460	60	34.2
FULL LOAD	1745	30.0	90	460	60	41.2
O/L	1666	57.3	181	460	60	81.0

REMARKS: TYPICAL DATA

 <p>BALDOR A MEMBER OF THE ABB GROUP</p>	DR. BY	B. GRANT	<p>A-C MOTOR PERFORMANCE DATA</p> <p>L1206A ISSUE DATE 10-31-11</p>
	CK. BY	B. GRANT	
	APP. BY	T. EVON	
DATE	3-31-98		

