

# **BALDOR**® • *RELIANCE*

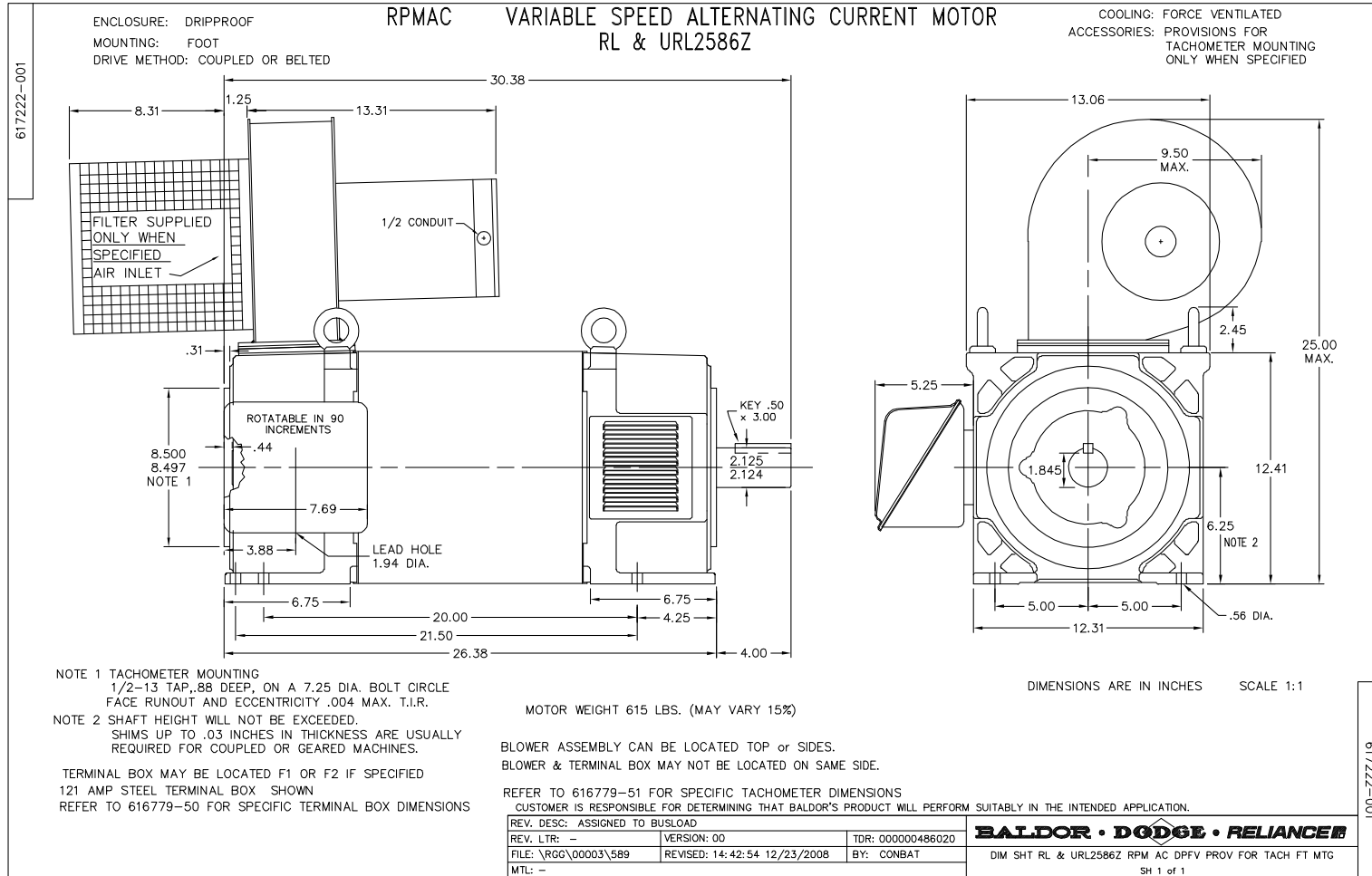
## **Product Information Packet**

# **IDDRPM251254**

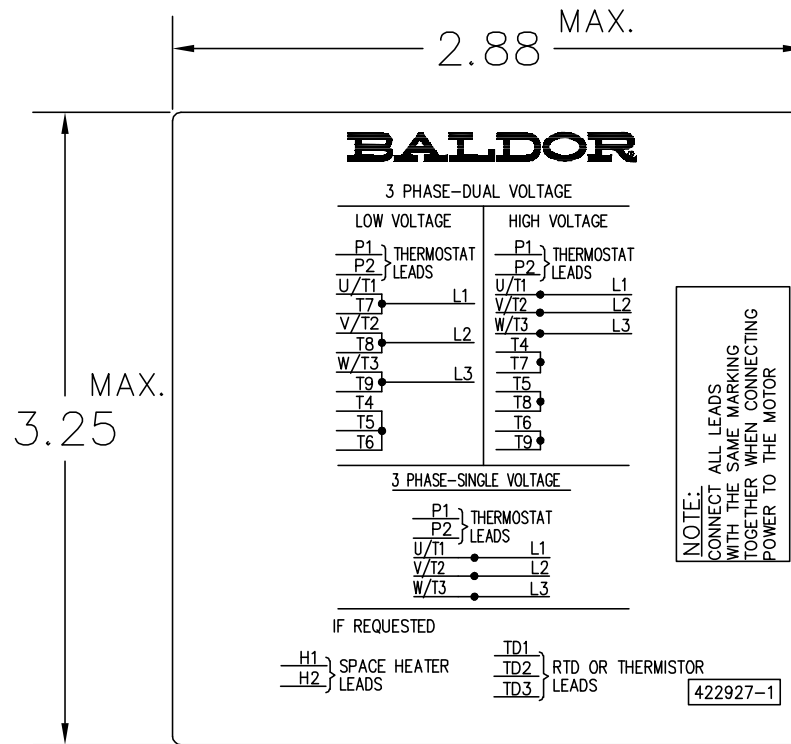
**125HP, 1750RPM, 3PH, N/AHZ, 2586, DPG-FV,**

Copyright © All product information within this document is subject to Baldor Electric Company copyright © protection, unless otherwise noted.

| Part Detail         |                    |                     |                 |
|---------------------|--------------------|---------------------|-----------------|
| Model Number:       | IDDRPM251254       | Environment:        | General Purpose |
| Voltage:            | 460                | HP:                 | 125             |
| RPM:                | 1750/1900          | Efficiency:         | NA              |
| Phase:              | 3                  | Frequency:          | N/A             |
| Inverter Duty:      | Y                  | Enclosure:          | DPG-FV          |
| Frame Group:        | 250                | Frame Size:         | RL2586          |
| Features:           | RPM AC             | Mounting:           |                 |
| Service Factor:     | 1                  | Enclosure Group:    | DPG-FV          |
| Weight:             | 0                  | Price Symbol:       | E2              |
| Speed Range:        |                    | Insulation Class:   | H               |
| Nema Design:        | A                  | Encl. Enhancement:  |                 |
| Catalog Page:       | M-215,             | Dimension Sheet:    | 617222-1        |
| Connection Diagram: | 422927-1           | Electric Design:    | L1824A          |
| Single HP:          | 125                | Get Notes:          | RPM AC          |
| Revision:           |                    | Instruction Manual: | B-3682          |
| Application:        | Variable Speed-V*S | Epact:              | Y               |
| Scaled Drawing:     |                    | Obsolete:           | N               |
| Last Data Source:   | RGG,MADD           | Bearing Type:       |                 |
| Electrical Type:    |                    | Mounting Pos.:      |                 |
| Ambient:            | 40                 | Duty:               |                 |
| Amps:               |                    | Nominal Eff.:       |                 |
| Kva Code:           |                    | Power Factor:       |                 |
| Poles:              | 00                 | Literature:         |                 |



422927-001



NOTE:  
DATA TO BE SIZED  
SO THAT IT FITS INTO  
MATERIAL DECAL  
DIMENSIONS. MAKE  
LETTERS & NUMBERS  
AS LARGE AS POSSIBLE.

MATERIAL: CERAMATIC DGF-P4  
PERMA GRIP ADHESIVE  
ALL LETTERS, NUMBERS  
AND LINES TO BE BLACK  
ON GOLD BACKGROUND.

422927-1

422927-001

|                                  |                              |                   |
|----------------------------------|------------------------------|-------------------|
| REV. DESC: CHANGE LOGO TO BALDOR |                              |                   |
| REV. LTR: A                      | VERSION: 01                  | TDR: 000000556744 |
| FILE: \RGG\00000\203             | REVISED: 02:51:59 09/02/2010 |                   |
| MTL: -                           | BY: RGGWT                    |                   |

**BALDOR**

EXTERNAL CONNECTION LABEL

SH 1 of 1

REL. S. O. -  
 FRAME RL2586  
 HP 125  
 BASE SPEED 1750  
 PHASE/HERTZ 3/60

VOLTS 460  
 AMPS 148  
 DUTY CONT 1.0  
 S.F. 1.0  
 AMB °C/INSUL 40/H

ENCLOSURE DEPV  
 MAX SAFE RPM 5000  
 IM (AMPS) 40  
 P.F. @NL/FL .058/.883  
 WK<sup>2</sup> (LB-FT<sup>2</sup>) 4.9

WYE CONN EQ CKT OHMS PER PHASE (AT BASE RATING, 25 °C)  
 R1 .0450 X1 .231  
 R2 .0360 X2 .228  
 XM 6.60


**RATED FULL LOAD DATA**

|            | RPM  | HP  | TORQUE<br>LB-FT | FUND<br>VOLTS | FREQ-HZ | AMPS |
|------------|------|-----|-----------------|---------------|---------|------|
| BASE SPEED | 1750 | 125 | 375             | 460           | 60      | 147  |
| MAX SPEED  | 2329 | 125 | 282             | 460           | 80      | 147  |
| MIN SPEED  | 0    | 0   | 375             | 20.2          | 1.68    | 147  |

**LOAD PERFORMANCE AT BASE SPEED**

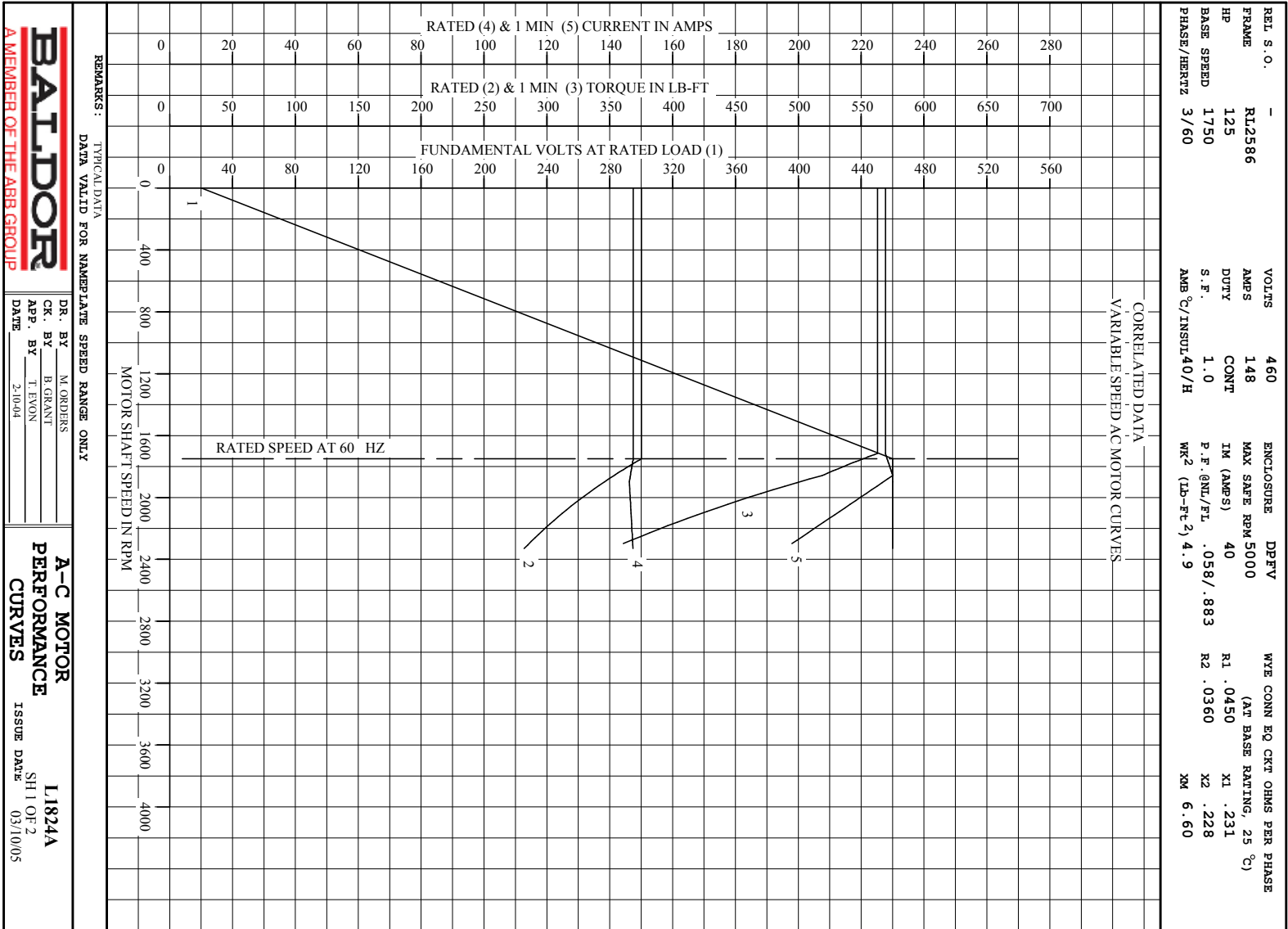
|           | RPM  | HP   | TORQUE<br>LB-FT | FUND<br>VOLTS | FREQ-HZ | AMPS |
|-----------|------|------|-----------------|---------------|---------|------|
| NO LOAD   | 1800 | 0    | 0               | 460           | 60      | 40.5 |
| 1/4       | 1789 | 31.3 | 92              | 460           | 60      | 54.2 |
| 1/2       | 1777 | 62.6 | 185             | 460           | 60      | 80.1 |
| 3/4       | 1764 | 93.7 | 279             | 460           | 60      | 112  |
| FULL LOAD | 1750 | 125  | 375             | 460           | 60      | 147  |
| O/L       | 1715 | 184  | 563             | 460           | 60      | 228  |

REMARKS: TYPICAL DATA  
 CORRELATED DATA

|   |                        |   |
|---|------------------------|---|
|  <p><b>A MEMBER OF THE ABB GROUP</b></p> | DR. BY _____ M. ORDERS | <p><b>A-C MOTOR<br/>                 PERFORMANCE<br/>                 DATA</b></p> <p>L1824A<br/>                 ISSUE DATE 03/10/05</p> |
|   | CK. BY _____ B. GRANT  |   |
|   | APP. BY _____ T. EVON  |   |
| DATE 2-10-04  |                        |   |

C/R 393520

Printed on 1/16/12 10:17 @ r99



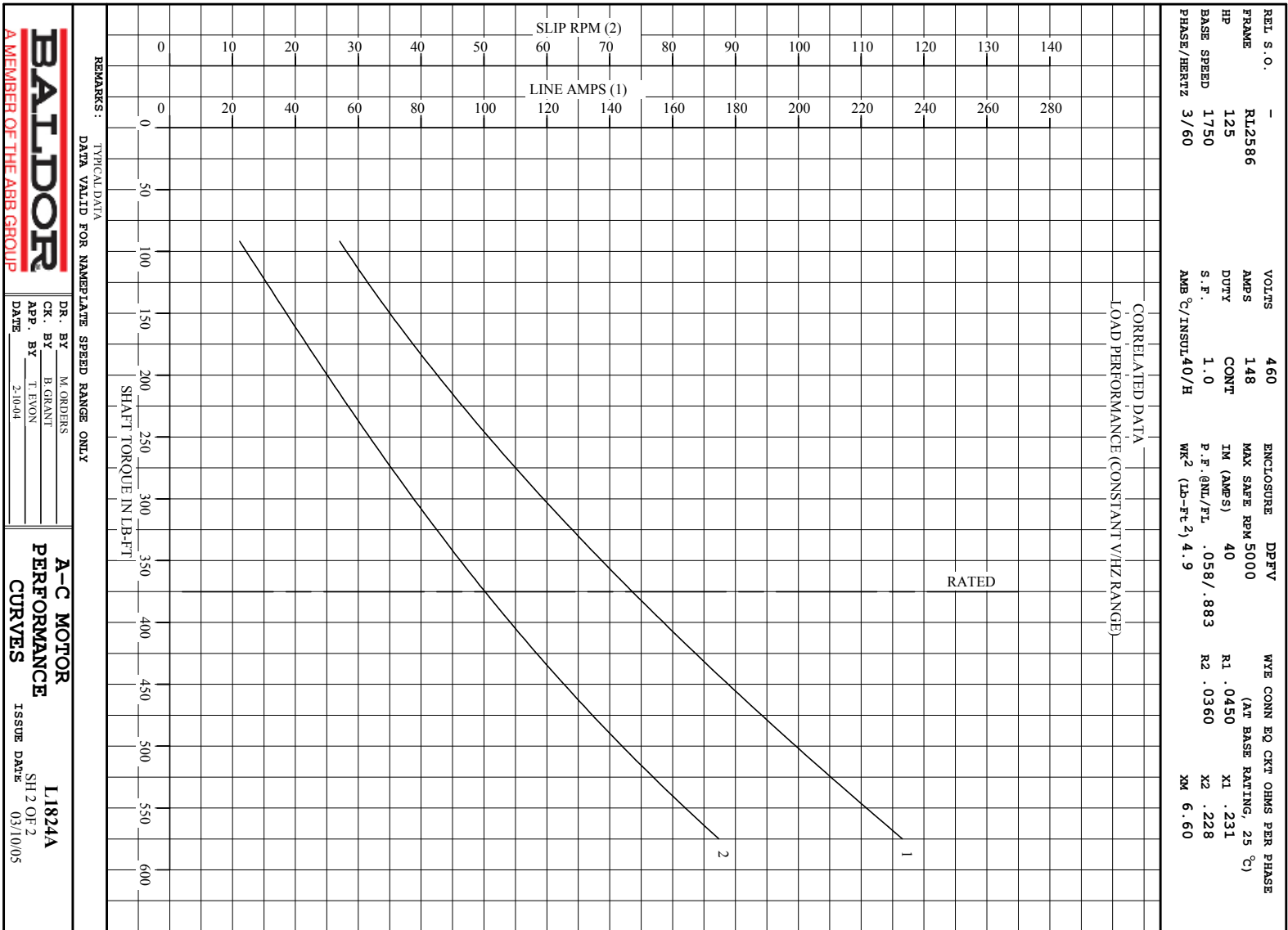
**REMARKS:** TYPICAL DATA  
DATA VALID FOR NAMEPLATE SPEED RANGE ONLY

|                         |                            |
|-------------------------|----------------------------|
| <b>DR. BY</b> M. ORDERS | <b>A-C MOTOR</b>           |
| <b>CK. BY</b> B. GRANT  | <b>PERFORMANCE</b>         |
| <b>APP. BY</b> T. EVON  | <b>CURVES</b>              |
| <b>DATE</b> 2-10-04     | <b>ISSUE DATE</b> 03/10/05 |

**L1824A**  
SH 1 OF 2

C/R 393520

A MEMBER OF THE ABB GROUP



REMARKS: TYPICAL DATA  
DATA VALID FOR NAMEPLATE SPEED RANGE ONLY

|  |   |
|--|---|
| <p><b>BALDOR</b><br/>A MEMBER OF THE ABB GROUP</p> <p>DR. BY M. GRADERS<br/>CK. BY B. GRANT<br/>APP. BY T. EVON<br/>DATE 2-10-04</p> | <p><b>A-C MOTOR</b><br/>PERFORMANCE<br/>CURVES</p> <p style="text-align: right;">L1824A<br/>SH 2 OF 2<br/>ISSUE DATE 03/10/05</p> |
|--|---|

C/R 393520