

BALDOR® • *RELIANCE*

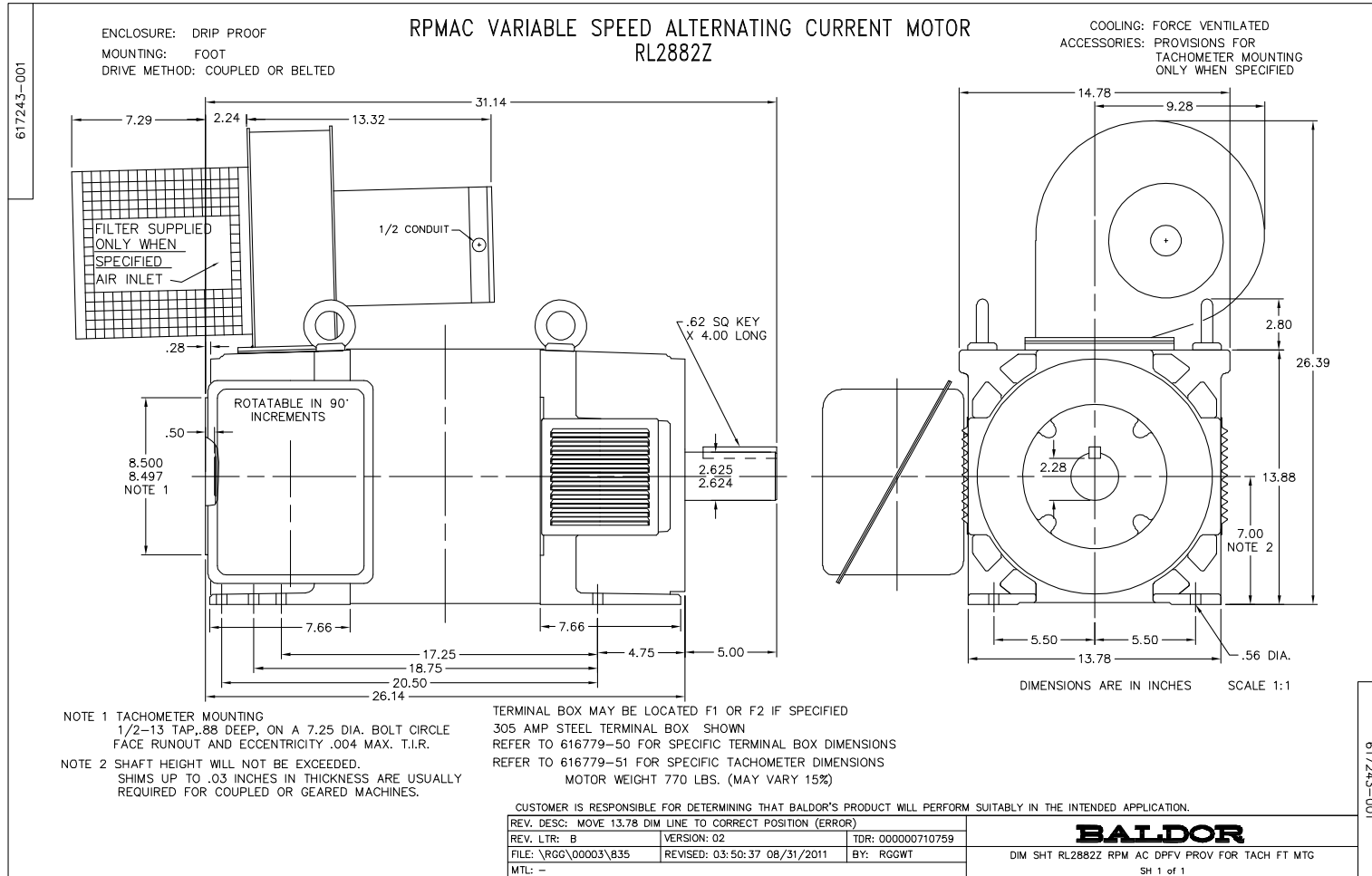
Product Information Packet

IDDRPM281006

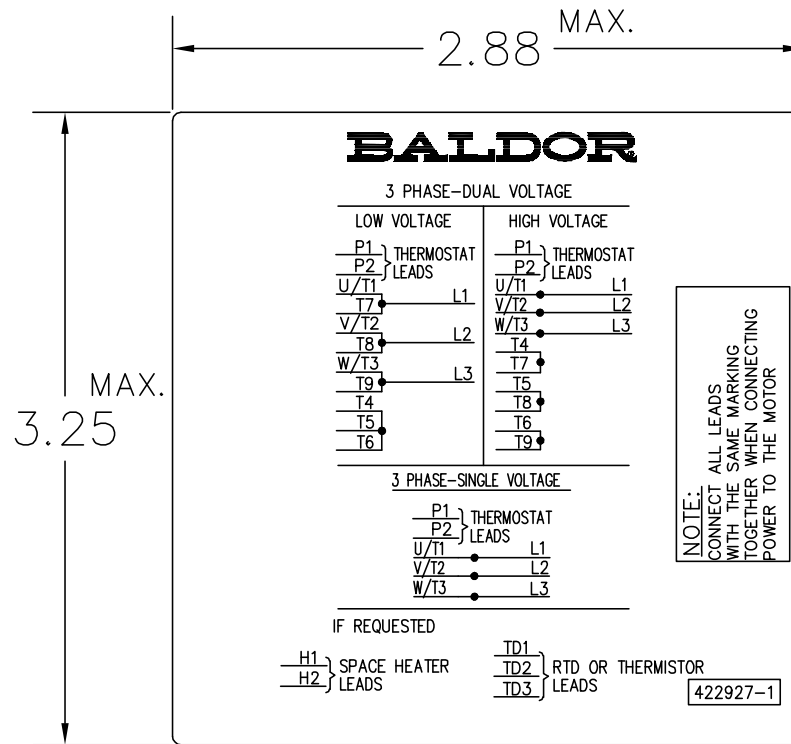
100HP, 1160RPM, 3PH, NAHZ, L2882, DPG-FV, FOOT

Copyright © All product information within this document is subject to Baldor Electric Company copyright © protection, unless otherwise noted.

Part Detail			
Model Number:	IDDRPM281006	Environment:	
Voltage:	460	HP:	100
RPM:	1160/1445	Efficiency:	
Phase:	3	Frequency:	N/A
Inverter Duty:	Y	Enclosure:	DPG-FV
Frame Group:	280	Frame Size:	RL2882
Features:	RPM AC	Mounting:	Foot Mounted
Service Factor:	1	Enclosure Group:	DPG-FV
Weight:	0	Price Symbol:	
Speed Range:		Insulation Class:	H
Nema Design:		Encl. Enhancement:	
Catalog Page:		Dimension Sheet:	617243-1
Connection Diagram:	422927-1	Electric Design:	L0337A
Single HP:	100	Get Notes:	
Revision:		Instruction Manual:	
Application:	Variable Speed-V*S	Epact:	X
Scaled Drawing:		Obsolete:	N
Last Data Source:	RGG,MADD	Bearing Type:	
Electrical Type:		Mounting Pos.:	
Ambient:	40	Duty:	
Amps:		Nominal Eff.:	
Kva Code:		Power Factor:	
Poles:	00	Literature:	



422927-001



NOTE:
DATA TO BE SIZED
SO THAT IT FITS INTO
MATERIAL DECAL
DIMENSIONS. MAKE
LETTERS & NUMBERS
AS LARGE AS POSSIBLE.

MATERIAL: CERAMATIC DGF-P4
PERMA GRIP ADHESIVE
ALL LETTERS, NUMBERS
AND LINES TO BE BLACK
ON GOLD BACKGROUND.

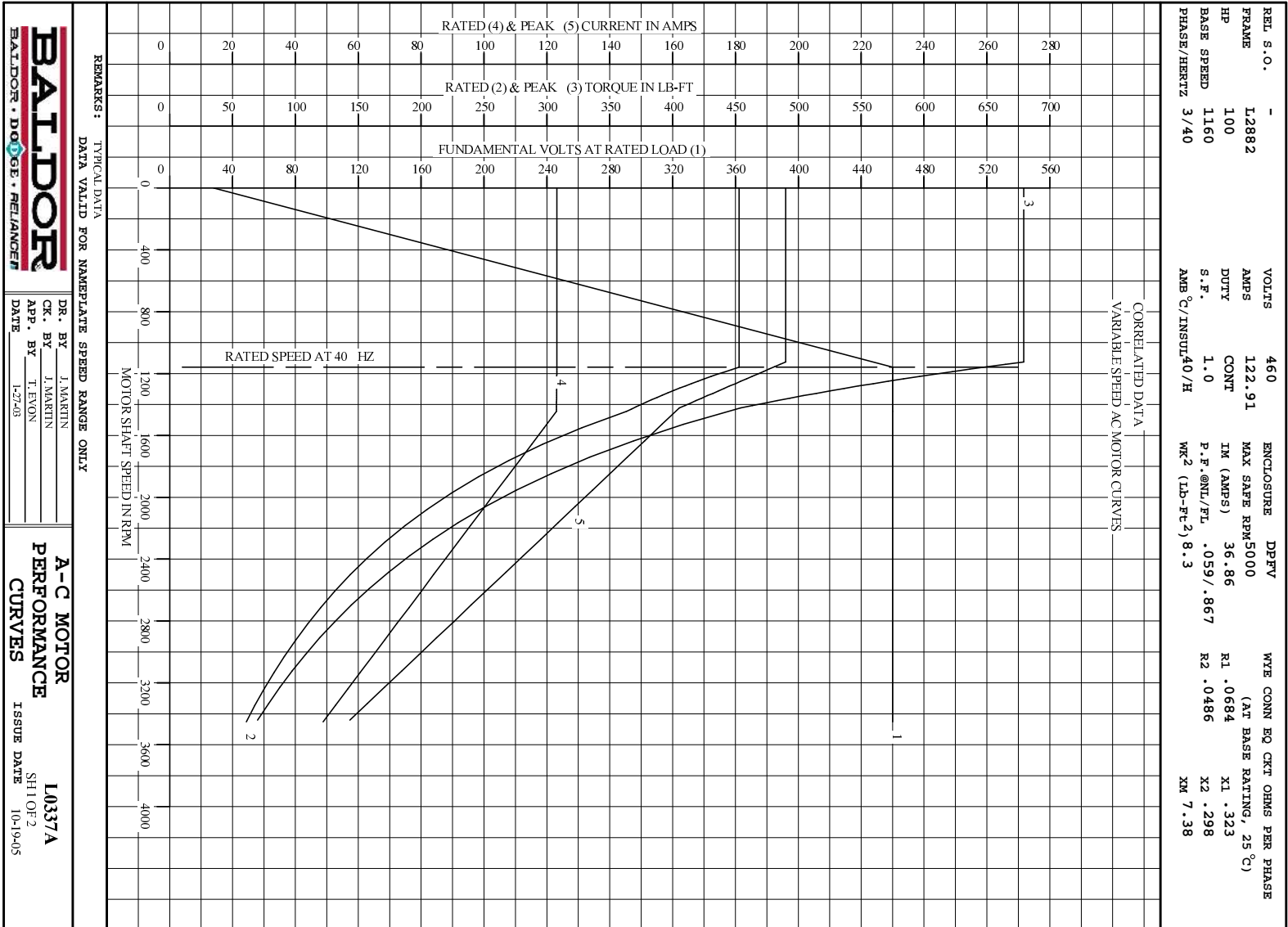
422927-1

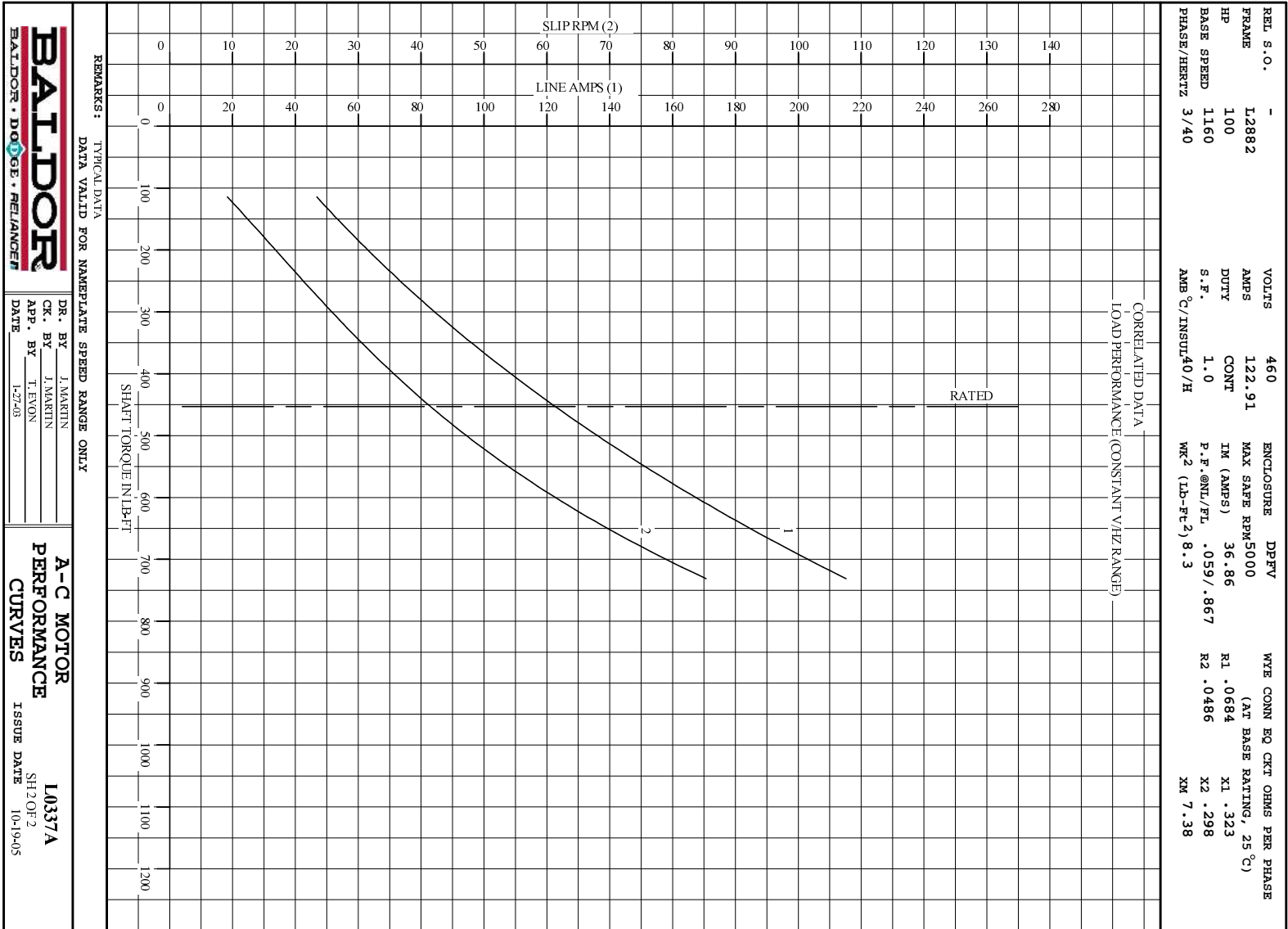
422927-001

REV. DESC: CHANGE LOGO TO BALDOR		
REV. LTR: A	VERSION: 01	TDR: 000000556744
FILE: \RGG\00000\203	REVISED: 02:51:59 09/02/2010	
MTL: -	BY: RGGWT	

BALDOR

EXTERNAL CONNECTION LABEL
SH 1 of 1





BALDOR
BALDOR • DOUGLASS • RELIANCE

DR. BY J. MARTIN
CK. BY J. MARTIN
APP. BY T. EVON
DATE 1-27-06

A-C MOTOR
PERFORMANCE
CURVES
L0337A
SH20F2
ISSUE DATE 10-19-05

REL. S.O.	-	VOLTS	460	ENCLOSURE	DPFV	WYE CONN EQ CKT OHMS PER PHASE
FRAME	L2882	AMPS	122.91	MAX SAFE RPM	5000	(AT BASE RATING, 25 °C)
HP	100	DUTY	CONT	IM (AMPS)	36.86	R1 .0684 X1 .323
BASE SPEED	1160	S.F.	1.0	P.F.@NL/FL	.059/.867	R2 .0486 X2 .298
PHASE/HERTZ	3/40	AMB °C/INSUL	40/H	WK ² (LB-FT ²)	8.3	XM 7.38

RATED FULL LOAD DATA


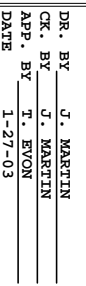
	RPM	HP	TORQUE LB-FT	FUND VOLTS	FREQ-HZ	AMPS
BASE SPEED	1158	99.9	453	460	40	123
MAX SPEED	3452	40.0	61	460	116.7	48.8
MIN SPEED	0	0	453	27.9	1.391	123

LOAD PERFORMANCE AT BASE SPEED

	RPM	HP	TORQUE LB-FT	FUND VOLTS	FREQ-HZ	AMPS
NO LOAD	1200	0	0	460	40	36.4
1/4	1191	25.9	114	460	40	47.0
1/2	1181	51.7	230	460	40	68.6
3/4	1169	77.6	349	460	40	95.9
FULL LOAD	1158	99.9	453	460	40	123
O/L	1124	146	679	460	40	196

BLOWER DATA	VOLTS	PH/HZ	FL AMPS	LR AMPS	FRAME	CFM

REMARKS: TYPICAL DATA
CORRELATED DATA

	DR. BY	J. MARTIN	A-C MOTOR PERFORMANCE DATA
	CK. BY	T. MARTIN	
	APP. BY	T. EVON	
	DATE	1-27-03	
		L0337A ISSUE DATE 10-19-05	