

# **BALDOR**® • *RELIANCE*

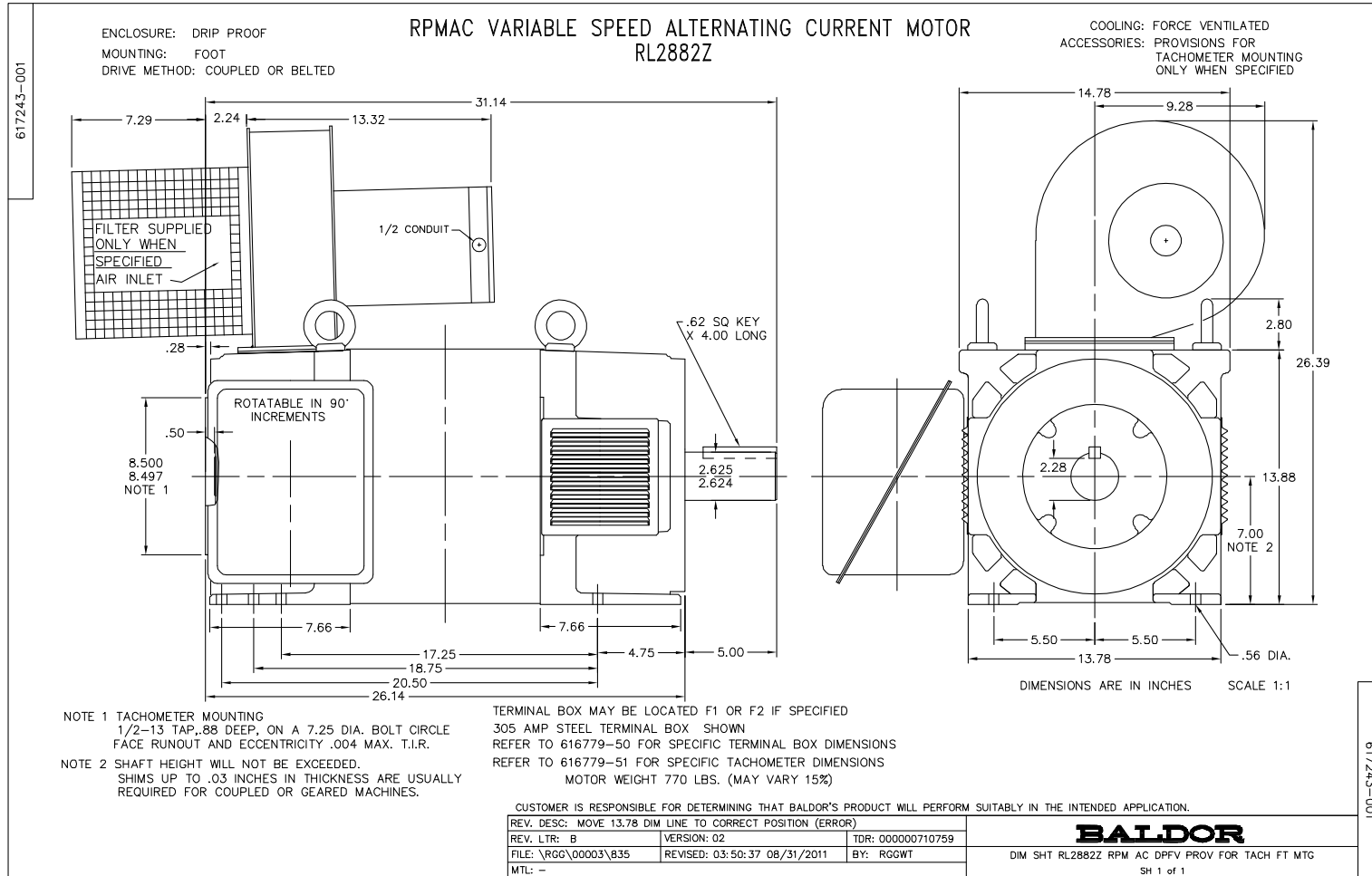
## **Product Information Packet**

# **IDDRPM281504**

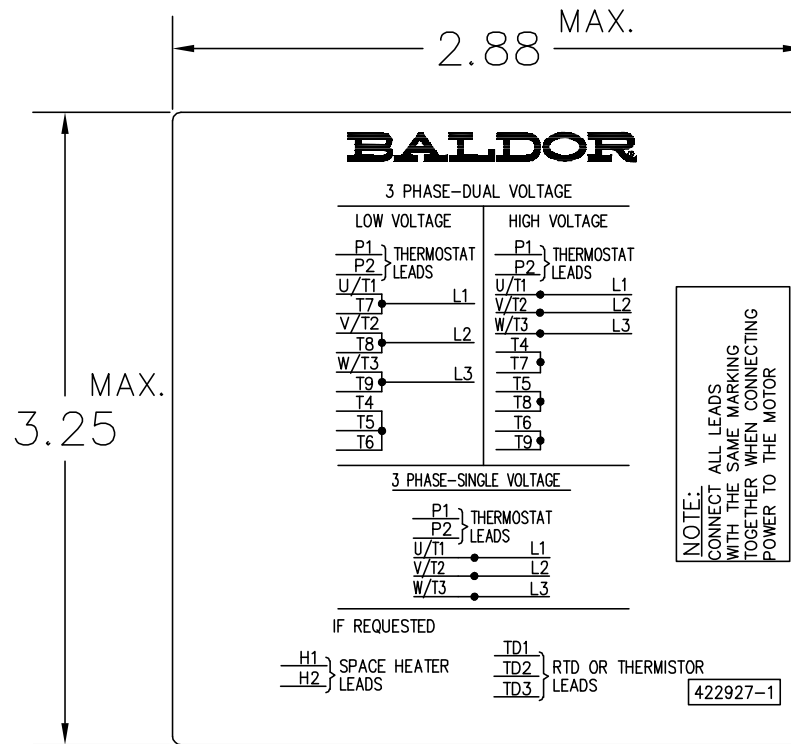
**150HP, 1750/2000, 3PH, RL2882, DPFV, F1**

Copyright © All product information within this document is subject to Baldor Electric Company copyright © protection, unless otherwise noted.

Part Detail			
Model Number:	IDDRPM281504	Environment:	
Voltage:	460	HP:	150
RPM:	1755/2000	Efficiency:	
Phase:	3	Frequency:	N/A
Inverter Duty:	Y	Enclosure:	DPG-FV
Frame Group:	280	Frame Size:	RL2882
Features:	RPM AC	Mounting:	Foot Mounted
Service Factor:	1	Enclosure Group:	DPG-FV
Weight:	0	Price Symbol:	
Speed Range:		Insulation Class:	H
Nema Design:		Encl. Enhancement:	
Catalog Page:		Dimension Sheet:	617243-1
Connection Diagram:	422927-1	Electric Design:	L0234A
Single HP:	150	Get Notes:	
Revision:		Instruction Manual:	
Application:	Variable Speed-V*S	Epact:	
Scaled Drawing:		Obsolete:	N
Last Data Source:	RGG,MADD	Bearing Type:	
Electrical Type:		Mounting Pos.:	
Ambient:	40	Duty:	
Amps:		Nominal Eff.:	
Kva Code:		Power Factor:	
Poles:	00	Literature:	



422927-001



NOTE:  
DATA TO BE SIZED  
SO THAT IT FITS INTO  
MATERIAL DECAL  
DIMENSIONS. MAKE  
LETTERS & NUMBERS  
AS LARGE AS POSSIBLE.

MATERIAL: CERAMATIC DGF-P4  
PERMA GRIP ADHESIVE  
ALL LETTERS, NUMBERS  
AND LINES TO BE BLACK  
ON GOLD BACKGROUND.

NOTE:  
CONNECT ALL LEADS  
WITH THE SAME MARKING  
TOGETHER WHEN CONNECTING  
POWER TO THE MOTOR

422927-1

422927-001

REV. DESC: CHANGE LOGO TO BALDOR		
REV. LTR: A	VERSION: 01	TDR: 000000556744
FILE: \RGG\00000\203	REVISED: 02:51:59 09/02/2010	
MTL: -	BY: RGGWT	

**BALDOR**

EXTERNAL CONNECTION LABEL  
SH 1 of 1

REL. S. O.	-	VOLTS	460	ENCLOSURE	DPFV	WYE CONN EQ CKT OHMS PER PHASE (AT BASE RATING, 25 °C)
FRAME	RL2882	AMPS	179.52	MAX SAFE RPM	5000	
HP	150	DUTY	CONT	IM (AMPS)	50.44	R1 .0332 X1 .230
BASE SPEED	1755	S.F.	1.0	P.F. @NL/FL	.054/.866	R2 .0230 X2 .222
PHASE/HERTZ	3/60	AMB °C/INSUL	40/H	WK <sup>2</sup> (LB-FT <sup>2</sup> )	8.3	XM 5.35


**RATED FULL LOAD DATA**

	RPM	HP	TORQUE LB-FT	FUND VOLTS	FREQ-HZ	AMPS
BASE SPEED	1752	150	450	460	60	182
MAX SPEED	1999	150	394	460	68.5	180
MIN SPEED	0	0	0	18.9	1.61	180

**LOAD PERFORMANCE AT BASE SPEED**

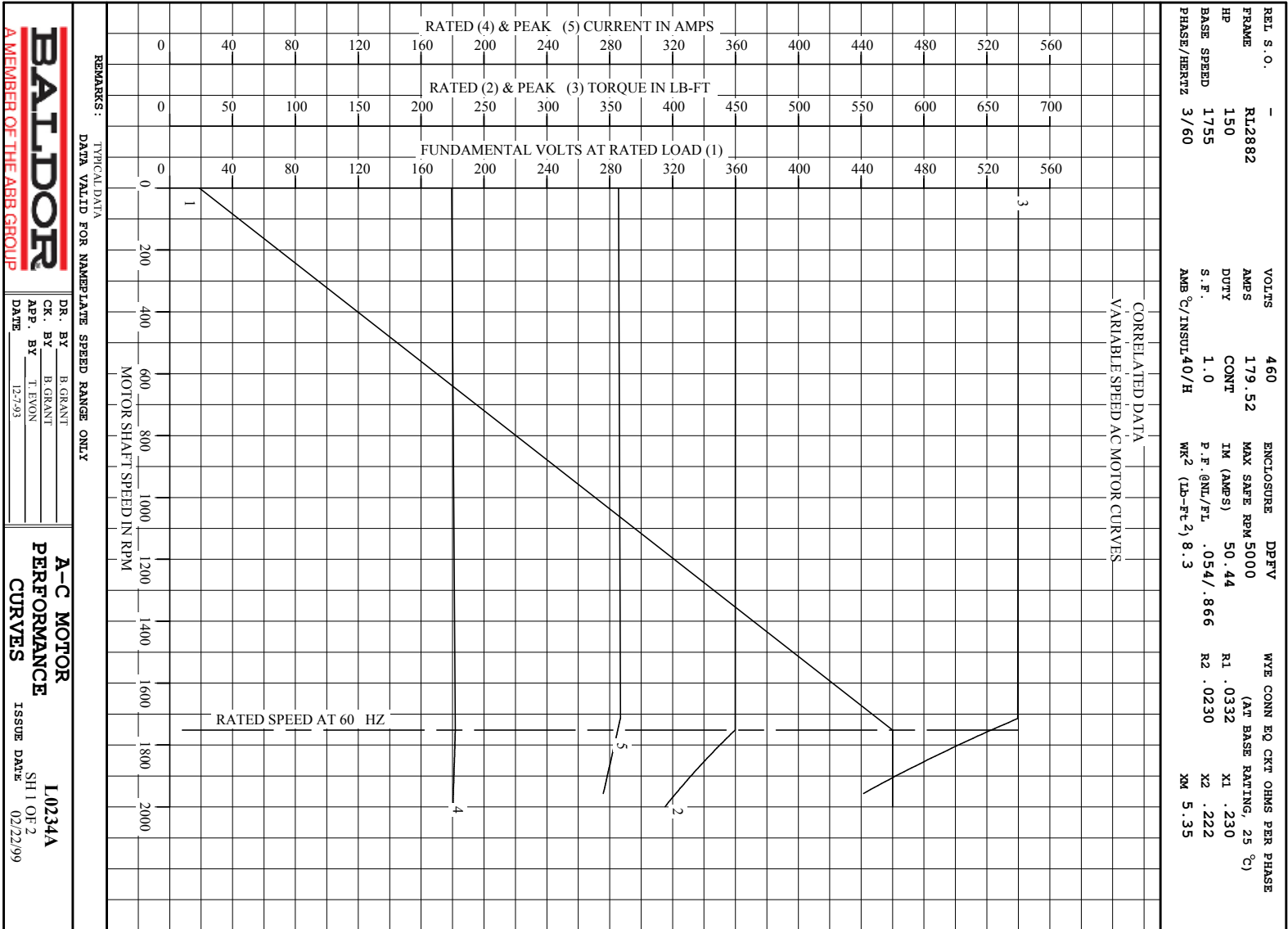
	RPM	HP	TORQUE LB-FT	FUND VOLTS	FREQ-HZ	AMPS
NO LOAD	1800	0	0	460	60	49.4
1/4	1790	37.5	110	460	60	65.6
1/2	1778	75.0	221	460	60	97.3
3/4	1766	112	334	460	60	136
FULL LOAD	1752	150	450	460	60	182
O/L	1714	220	675	460	60	287

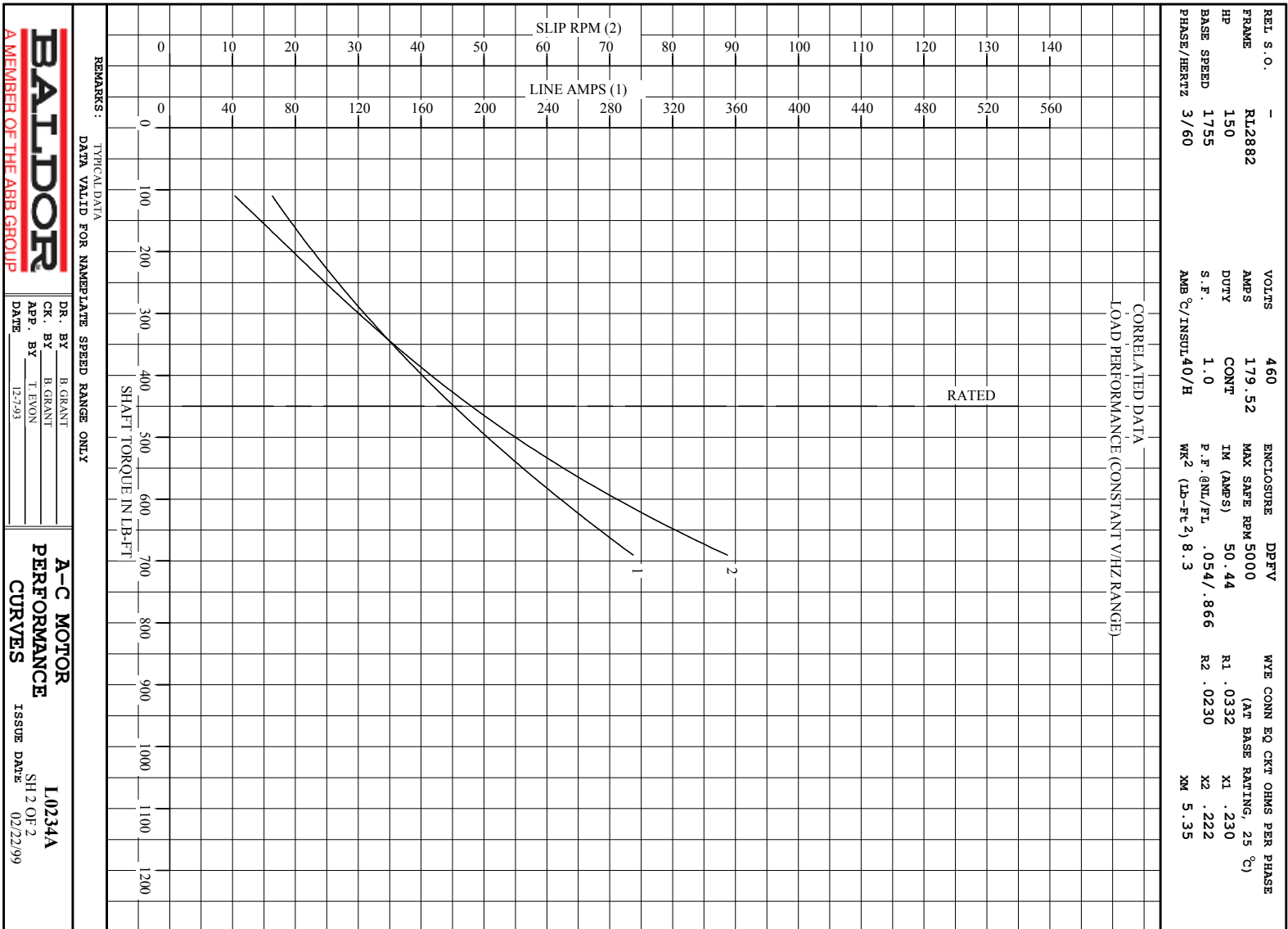
REMARKS: TYPICAL DATA  
CORRELATED DATA

 <p><b>BALDOR</b> A MEMBER OF THE ABB GROUP</p>	DR. BY	B. GRANT	<p><b>A-C MOTOR</b> PERFORMANCE DATA</p> <p>ISSUE DATE</p>
	CK. BY	T. EVON	
APP. BY	12-7-93		L0234A
DATE			02/22/99

Printed on 2/3/12 16:21 @ r99

1





**BALDOR**  
A MEMBER OF THE ABB GROUP

DR. BY B. GRANT  
CK. BY B. GRANT  
APP. BY T. EVON  
DATE 12-7-93

**A-C MOTOR**  
**PERFORMANCE**  
**CURVES**

ISSUE DATE 02/22/99  
L0234A  
SH 2 OF 2