

BALDOR® • RELIANCE

Product Information Packet

IDM4104T

30HP, 1780RPM, 3PH, 60HZ, 284T, 1056M, TEBC, F1

Copyright © All product information within this document is subject to Baldor Electric Company copyright © protection, unless otherwise noted.

| Part Detail | | | | | | | |
|-------------|------|-------------|-------|----------------|----------|---------------|------------|
| Revision: | Q | Status: | PRD/A | Change #: | | Proprietary: | No |
| Type: | AC | Prod. Type: | 1056M | Elec. Spec: | 10WGW586 | CD Diagram: | |
| Enclosure: | TEBC | Mfg Plant: | | Mech. Spec: | 10F206 | Layout: | |
| Frame: | 286T | Mounting: | F1 | Poles: | 04 | Created Date: | |
| Base: | RG | Rotation: | R | Insulation: | H | Eff. Date: | 12-07-2010 |
| Leads: | 9#10 | Literature: | | Elec. Diagram: | | Replaced By: | |

| Nameplate NP1163L | | | | | | | |
|-------------------|--------------|---------|-------|-------|------|---|--|
| CAT NO | IDM4104T | | | | | | |
| SPEC. | 10F206W586G1 | | | | | | |
| FRAME | 286T | HP | 30 TE | | | | |
| VOLTS | 230/460 | | | | | | |
| MAG CUR | 29/14.5 | FLA | 72/36 | | | | |
| RPM | 1780 | RPM MAX | 4000 | | | | |
| HZ | 60 | PH | 3 | CLASS | H | | |
| SER.F. | 1.00 | DES | B | SL HZ | 0.85 | | |
| NEMA-NOM-EFF | 94.1 | WK2 | 4.46 | | | | |
| BLWR V | | PH | | HZ | | A | |
| RATING | 40C AMB-CONT | | | | | | |
| DE BRG | 6311 | ODE BRG | 6309 | | | | |
| CC | | SN | | | | | |
| | | | | | | | |

| Parts List | | |
|-------------|--|----------|
| Part Number | Description | Quantity |
| SA109277 | SA 10F206W586G1 | 1.000 EA |
| RA100769 | RA 10F206W586G1 | 1.000 EA |
| 10CB3000SP | STD KO BOX MODEL 310,312,314 MTRS W/2.00 | 1.000 EA |
| 12GS1000SP | GASKET | 1.000 EA |
| 10XN3118K12 | 5/16-18 X .75 GRADE 5, ZINC PLATED | 4.000 EA |
| HW1001A31 | LOCKWASHER 5/16, ZINC PLT.591 OD, .319 I | 4.000 EA |
| WD1000B16 | KPA-4C BURNDY TERMINAL | 1.000 EA |
| 51XF2520A08 | SCREW, HEX SER SLT HD, ZN 1/4-20 X .50 L | 1.000 EA |
| 10EP1104A57 | FR. E.P. TEBC W/THRU SHAFT ENCODER DESIG | 1.000 EA |
| HA4051A00 | PLASTIC CAP FOR GREASE FITTING | 1.000 EA |
| 10XN3816K32 | BOLT, 3/8-16X2 HH YZ(5) | 4.000 EA |
| HW1001A38 | LOCKWASHER 3/8, ZINC PLT .688 OD, .382 I | 4.000 EA |
| HA1005A26 | SLINGER, OD 3.00, ID 1.75, 309 BRG | 1.000 EA |
| 10XN2520K12 | 1/4-20 X.75 GRD 5 | 1.000 EA |
| HW1001A25 | LOCKWASHER 1/4, ZINC PLT .493 OD, .255 I | 1.000 EA |
| HW5100A11 | W3917-042 WVY WSHR (WB) | 1.000 EA |
| 10XN2520K32 | 1/4-20 X 2.00 HX HD SCRW GRADE 5, ZINC P | 2.000 EA |
| HW1001A25 | LOCKWASHER 1/4, ZINC PLT .493 OD, .255 I | 2.000 EA |
| 10XN3118K40 | 5/16-18 X 2.50" HEX HD, GRADE 5 | 4.000 EA |
| HW1001A31 | LOCKWASHER 5/16, ZINC PLT.591 OD, .319 I | 4.000 EA |
| 10EP1105A01 | PU ENDPLATE, MACH 284-6T | 1.000 EA |
| HA4051A00 | PLASTIC CAP FOR GREASE FITTING | 1.000 EA |
| 10XN3816K28 | 3/8-16 X 1.75 HEX HD CAP SCREW, GRADE 5 | 4.000 EA |
| HW1001A38 | LOCKWASHER 3/8, ZINC PLT .688 OD, .382 I | 4.000 EA |

| Parts List (continued) | | |
|------------------------|--|----------|
| Part Number | Description | Quantity |
| HA1005A04SP | SLINGER, OD 3.620, ID 1.98, | 1.000 EA |
| 51XW2520A12 | .25-20 X .75, TAPTITE II, HEX WSHR SLTD | 6.000 EA |
| HW1001A25 | LOCKWASHER 1/4, ZINC PLT .493 OD, .255 I | 6.000 EA |
| 10FH4006 | 310 VECTOR DR FAN HSG DUAL MTG (F1/F2 | 1.000 EA |
| HA6354A01 | MTG. BRACKET 310 FRAME FAN HOUSING | 4.000 EA |
| 10XN3118K08 | 5/16-18 X .50 GRADE #5, STL, ZINC PLATE | 4.000 EA |
| HW1001A31 | LOCKWASHER 5/16, ZINC PLT.591 OD, .319 I | 4.000 EA |
| WD4101A09 | STIMPSON D3560, .875 DIA. HOLE PLUG | 1.000 EA |
| 10CB3500SP | CONDUIT BOX LID, CAST | 1.000 EA |
| 10GS1000SP | GASKET, CONDUIT BOX LID | 1.000 EA |
| 51XW2520A12 | .25-20 X .75, TAPTITE II, HEX WSHR SLTD | 4.000 EA |
| HW2501H28 | KEY, 1/2 SQ X 3.250 | 1.000 EA |
| LB1115 | LABEL,LIFTING DEVICE | 1.000 EA |
| LB1009 | LABEL,ROTATION DIRECTION (ON ROLLS) | 1.000 EA |
| HW4500A21 | 1618BALEMITE FITTING 825 UNIVERSAL | 1.000 EA |
| HA4017A01 | 1/8 X 4 GREASE EXT (F/S) | 1.000 EA |
| HW4500A17 | 317400 ALEMITE GREASE RELIEF | 1.000 EA |
| HA4001A01SP | DRAIN PLUG, PLASTIC (MICRO PLAS) | 1.000 EA |
| MJ1000A75 | GREASE, POLYREX EM EXXON | 0.130 LB |
| HW4500A03 | GREASE FITTING, .125 NPT 1610(ALEMITE) 8 | 1.000 EA |
| HW4500A17 | 317400 ALEMITE GREASE RELIEF | 1.000 EA |
| HA4001A01SP | DRAIN PLUG, PLASTIC (MICRO PLAS) | 1.000 EA |
| EF5002SP | VENTURI/GRILLE KIT FOR 310/312 TEBC MOTO | 1.000 EA |
| 33CB3002 | CONDUIT BOX, CAST | 1.000 EA |

| Parts List (continued) | | |
|------------------------|--|----------|
| Part Number | Description | Quantity |
| 34CB4500SP | CONDUIT BOX LID, STAMPED | 1.000 EA |
| 34GS1001 | GASKET, STD CONDUIT BOX LID (LEXIDE) | 1.000 EA |
| 51XT0832A07 | 8-32 X .44 TYPE 23 HEX WASHER SLOTTED | 4.000 EA |
| RM1022A02 | GROMMET .875 ID 1.00 OD .12 WALL,VENDOR# | 1.000 EA |
| 51XN0832A12 | 8-32 HEX SLOT WSHR HD MACH SC GRADE 2, Z | 2.000 EA |
| HW1001A08 | WASHER, #8 SPLT LK, ZN | 4.000 EA |
| XY0832A02 | 8-32 HEX NUT | 2.000 EA |
| WD4101A08 | STIMPSON #D3557,1.188 DIA. HOLE PLUG | 2.000 EA |
| MG1000G27 | PAINT- S9282E CHARCOAL GREY | 0.070 GA |
| 85XU0407A04 | #4-7 X 1/4 DRIVE PIN | 2.000 EA |
| LB5040 | INSTRUCTION TAG, AC & DC | 1.000 EA |
| LB1125C01 | STD (STOCK) CARTON LABEL BALDOR WITH FLA | 4.000 EA |
| LC0005E02 | SPL CONN.DIA./WARN.LABEL(LC0005/LB1119) | 1.000 EA |
| NP1163L | ALUM INV UL CSA CC | 1.000 EA |
| 10PA1010 | PACKAGING GROUP,BRAKE MTRTDR 10086 | 1.000 EA |

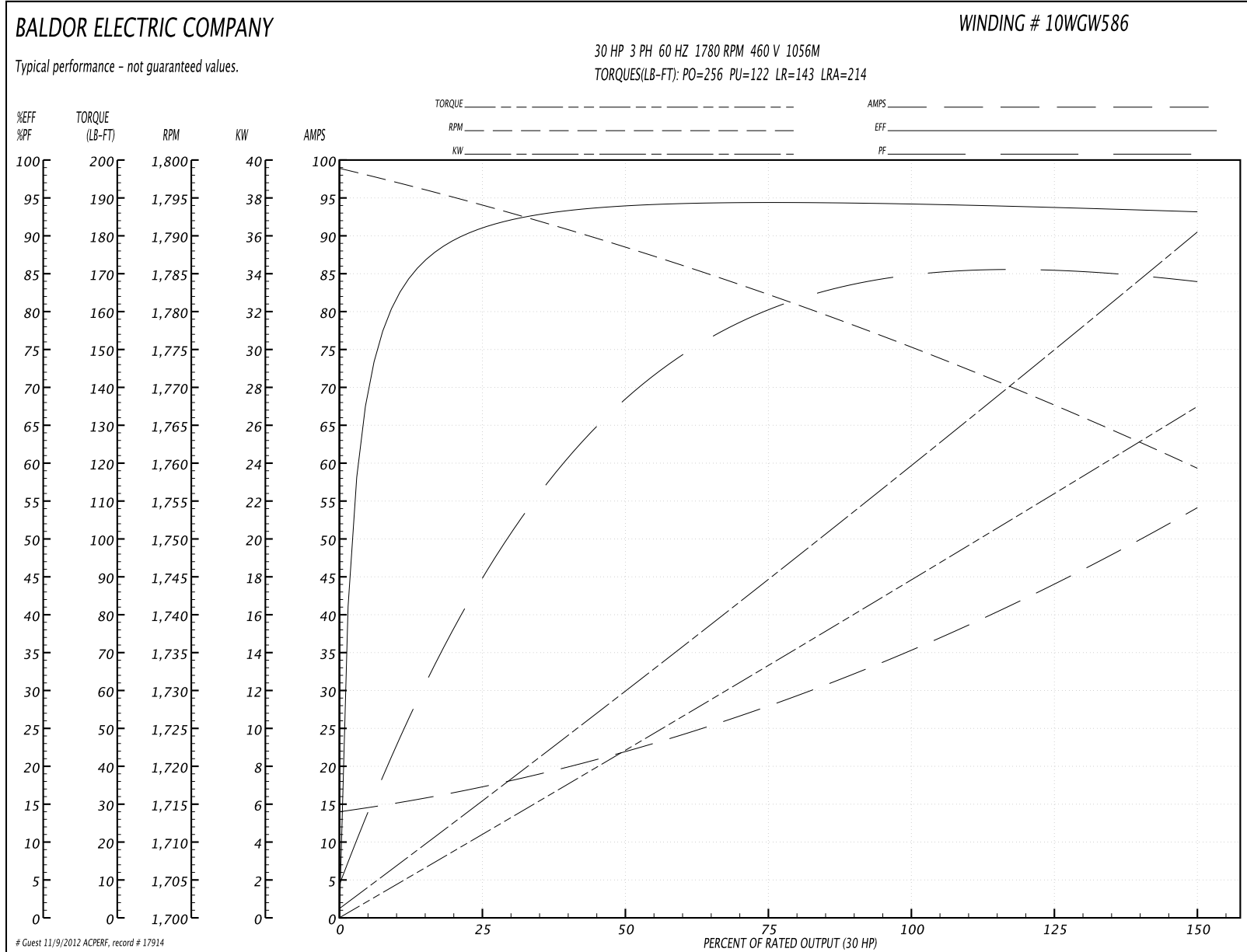
| Accessories | | |
|-------------|-------------|------------|
| Part Number | Description | Multiplier |
| 10-1305 | C FACE KIT | A8 |

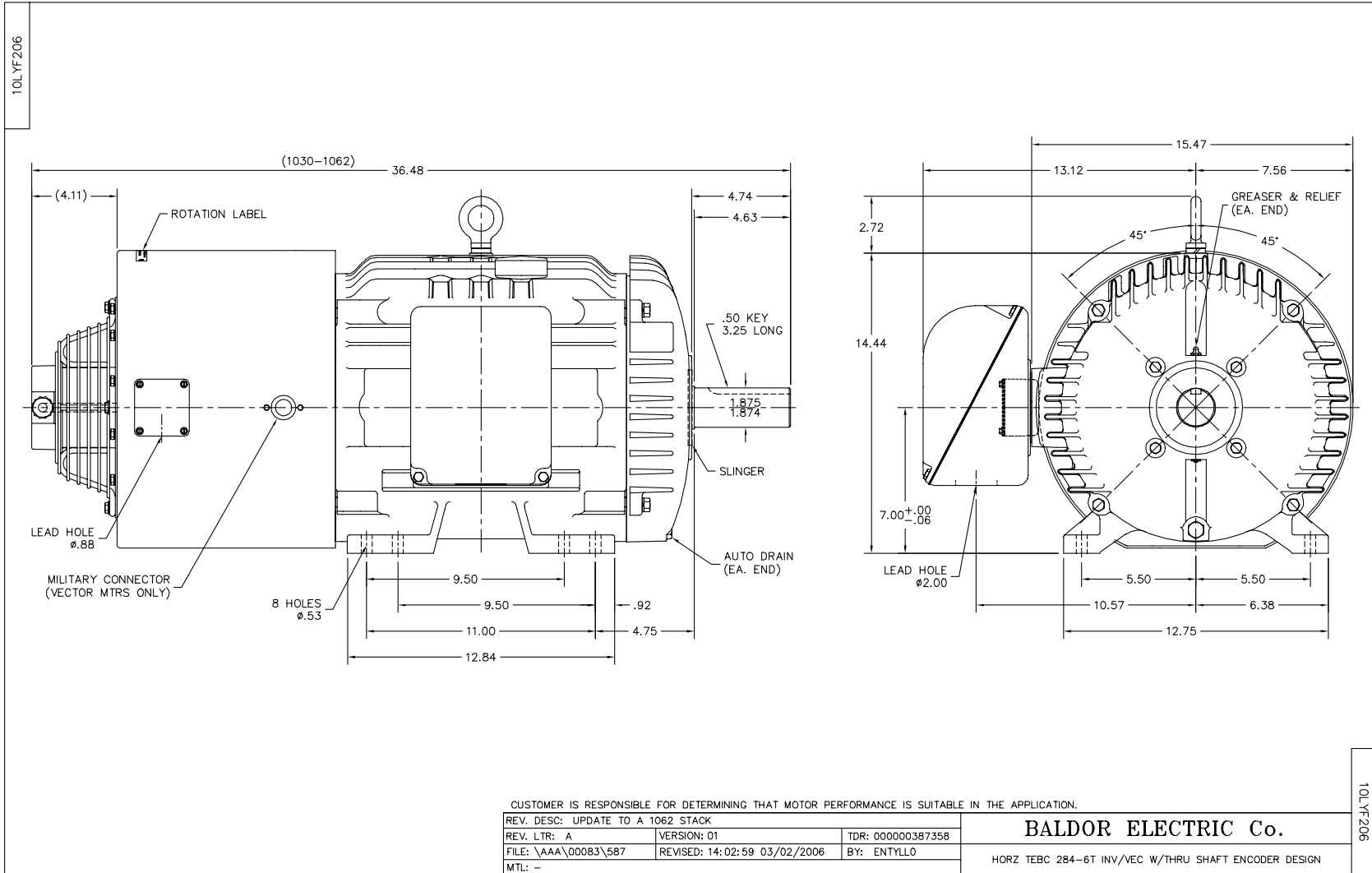
Performance Data at 460V, 60Hz, 30.0HP (Typical performance - Not guaranteed values)

| General Characteristics | | | |
|--------------------------|---------------------------------|----------------------|-------------|
| Full Load Torque: | 90.0 LB-FT | Start Configuration: | DOL |
| No-Load Current: | 14.5 Amps | Break-Down Torque: | 256.0 LB-FT |
| Line-line Res. @ 25°C.: | 0.242 Ohms A Ph / 0.0 Ohms B Ph | Pull-Up Torque: | 122.0 LB-FT |
| Temp. Rise @ Rated Load: | 56 C | Locked-Rotor Torque: | 143.0 LB-FT |
| Temp. Rise @ S.F. Load: | | Starting Current: | 214.0 Amps |

| Load Characteristics | | | | | | | |
|----------------------|--------|--------|--------|--------|--------|--------|------|
| % of Rated Load | 25 | 50 | 75 | 100 | 125 | 150 | S.F. |
| Power Factor: | 46.0 | 69.0 | 79.0 | 83.0 | 84.0 | 84.0 | 0.0 |
| Efficiency: | 90.7 | 93.8 | 94.4 | 94.3 | 93.8 | 93.1 | 0.0 |
| Speed: | 1794.0 | 1788.0 | 1782.0 | 1775.0 | 1768.0 | 1759.0 | 0.0 |
| Line Amperes: | 16.7 | 21.8 | 28.4 | 36.0 | 44.5 | 53.8 | 0.0 |

Performance Graph at 460V, 60Hz, 30.0HP Typical performance - Not guaranteed values

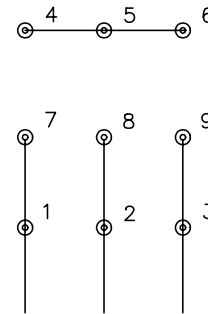




CD0005

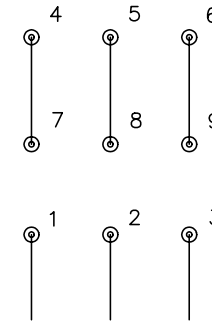


LOW VOLTAGE
(2Y)



LINE

HIGH VOLTAGE
(1Y)



LINE

NOTES:

1. INTERCHANGE ANY TWO LINE LEADS TO REVERSE ROTATION.
2. OPTIONAL THERMOSTATS ARE PROVIDED WHEN SPECIFIED.
3. ACTUAL NUMBER OF INTERNAL PARALLEL CIRCUITS MAY BE A MULTIPLE OF THOSE SHOWN ABOVE.
4. LEAD COLORS ARE OPTIONAL. LEADS MUST ALWAYS BE NUMBERED AS SHOWN.

| | | | |
|---|---------|-------------------------|--------------|
| REV. DESC: REVISE TO SHOW OPTIONAL COLORS | | | |
| REV. LTR: E | BY: JLP | REVISED: 01/19/99 10:15 | TDR: 0171435 |
| 90000 | | FILE: AAA00005140 | MDL: - |
| | | MTL: - | |

BALDOR ELECTRIC Co.

3PH, DV, 9 LEADS

CD0005