

# **BALDOR® • RELIANCE**

## **Product Information Packet**

### **IDNM2334T**

**20HP,1780RPM,3PH,60HZ,284T,1056M,TENV,F1**

Copyright © All product information within this document is subject to Baldor Electric Company copyright © protection, unless otherwise noted.

Part Detail							
Revision:	N	Status:	PRD/A	Change #:		Proprietary:	No
Type:	AC	Prod. Type:	1056M	Elec. Spec:	10WGW586	CD Diagram:	
Enclosure:	TENV	Mfg Plant:		Mech. Spec:	10F681	Layout:	
Frame:	284T	Mounting:	F1	Poles:	04	Created Date:	
Base:	RG	Rotation:	R	Insulation:	H	Eff. Date:	12-07-2010
Leads:	9#10	Literature:		Elec. Diagram:		Replaced By:	

Nameplate NP1163L							
CAT NO	IDNM2334T						
SPEC.	10F681W586G1						
FRAME	284T	HP	20 TE				
VOLTS	230/460						
MAG CUR	29/14.5	FLA	51/25.5				
RPM	1780	RPM MAX	4000				
HZ	60	PH	3	CLASS	H		
SER.F.	1.00	DES	A	SL HZ	0.67		
NEMA-NOM-EFF	94.5	WK2	4.46				
BLWR V		PH		HZ		A	
RATING	40C AMB-CONT						
DE BRG	6311	ODE BRG	6309				
CC		SN					

Parts List		
Part Number	Description	Quantity
SA109285	SA 10F681W586G1	1.000 EA
RA100777	RA 10F681W586G1	1.000 EA
10CB3000SP	STD KO BOX MODEL 310,312,314 MTRS W/2.00	1.000 EA
12GS1000SP	GASKET	1.000 EA
10XN3118K12	5/16-18 X .75 GRADE 5, ZINC PLATED	4.000 EA
HW1001A31	LOCKWASHER 5/16, ZINC PLT.591 OD, .319 I	4.000 EA
WD1000B16	KPA-4C BURNDY TERMINAL	1.000 EA
51XF2520A08	SCREW, HEX SER SLT HD, ZN 1/4-20 X .50 L	1.000 EA
10EP1104A105	FREP, TEBC W/THRU SHAFT ENCODER DESIGN &	1.000 EA
HA4051A00	PLASTIC CAP FOR GREASE FITTING	1.000 EA
HA4017A10	1/8X1.25 GREASE EXT (F/S)	1.000 EA
HA4024A02	1/8 DOUBLE FEMALE SS CPLG, MCM #4464K351	1.000 EA
HA4017A10	1/8X1.25 GREASE EXT (F/S)	1.000 EA
10XN3816K28	3/8-16 X 1.75 HEX HD CAP SCREW, GRADE 5	4.000 EA
HW1001A38	LOCKWASHER 3/8, ZINC PLT .688 OD, .382 I	4.000 EA
HW5100A11	W3917-042 WVY WSHR (WB)	1.000 EA
10XN2520K32	1/4-20 X 2.00 HX HD SCRW GRADE 5, ZINC P	2.000 EA
HW1001A25	LOCKWASHER 1/4, ZINC PLT .493 OD, .255 I	2.000 EA
10XN3118K40	5/16-18 X 2.50" HEX HD, GRADE 5	4.000 EA
HW1001A31	LOCKWASHER 5/16, ZINC PLT.591 OD, .319 I	4.000 EA
10EP1105A01	PU ENDPLATE, MACH 284-6T	1.000 EA
HA4051A00	PLASTIC CAP FOR GREASE FITTING	1.000 EA
10XN3816K28	3/8-16 X 1.75 HEX HD CAP SCREW, GRADE 5	4.000 EA
HW1001A38	LOCKWASHER 3/8, ZINC PLT .688 OD, .382 I	4.000 EA

Parts List (continued)		
Part Number	Description	Quantity
HA1005A04SP	SLINGER, OD 3.620, ID 1.98,	1.000 EA
HA6881	BEI HS35 THRU SHAFT ENCODER PROTECTIVE C	1.000 EA
10XN3816K12	3/8-16 X 3/4 HEX HD CAP GRADE 5	3.000 EA
HW1001A38	LOCKWASHER 3/8, ZINC PLT .688 OD, .382 I	3.000 EA
10CB3500SP	CONDUIT BOX LID, CAST	1.000 EA
10GS1000SP	GASKET, CONDUIT BOX LID	1.000 EA
51XW2520A12	.25-20 X .75, TAPTITE II, HEX WSHR SLTD	4.000 EA
HW2501H28	KEY, 1/2 SQ X 3.250	1.000 EA
LB1115	LABEL,LIFTING DEVICE	1.000 EA
LB5040	INSTRUCTION TAG, AC & DC	1.000 EA
HW4500A21	1618BALEMITE FITTING 825 UNIVERSAL	1.000 EA
HW4500A17	317400 ALEMITE GREASE RELIEF	1.000 EA
HA4001A01SP	DRAIN PLUG, PLASTIC (MICRO PLAS)	1.000 EA
10XN2520K12	1/4-20 X.75 GRD 5	1.000 EA
HW1001A25	LOCKWASHER 1/4, ZINC PLT .493 OD, .255 I	1.000 EA
MJ1000A75	GREASE, POLYREX EM EXXON	0.130 LB
HW4500A03	GREASE FITTING, .125 NPT 1610(ALEMITE) 8	1.000 EA
HW4500A17	317400 ALEMITE GREASE RELIEF	1.000 EA
HA4001A01SP	DRAIN PLUG, PLASTIC (MICRO PLAS)	1.000 EA
MG1000G27	PAINT- S9282E CHARCOAL GREY	0.070 GA
85XU0407A04	#4-7 X 1/4 DRIVE PIN	2.000 EA
LB1125C01	STD (STOCK) CARTON LABEL BALDOR WITH FLA	2.000 EA
LC0005E02	SPL CONN.DIA./WARN.LABEL(LC0005/LB1119)	1.000 EA
NP1163L	ALUM INV UL CSA CC	1.000 EA

Parts List (continued)		
Part Number	Description	Quantity
10PA1000	PACKAGING GROUP COMBINED PRINT PK1023A06	1.000 EA

**Performance Data at 460V, 60Hz, 20.0HP (Typical performance - Not guaranteed values)**

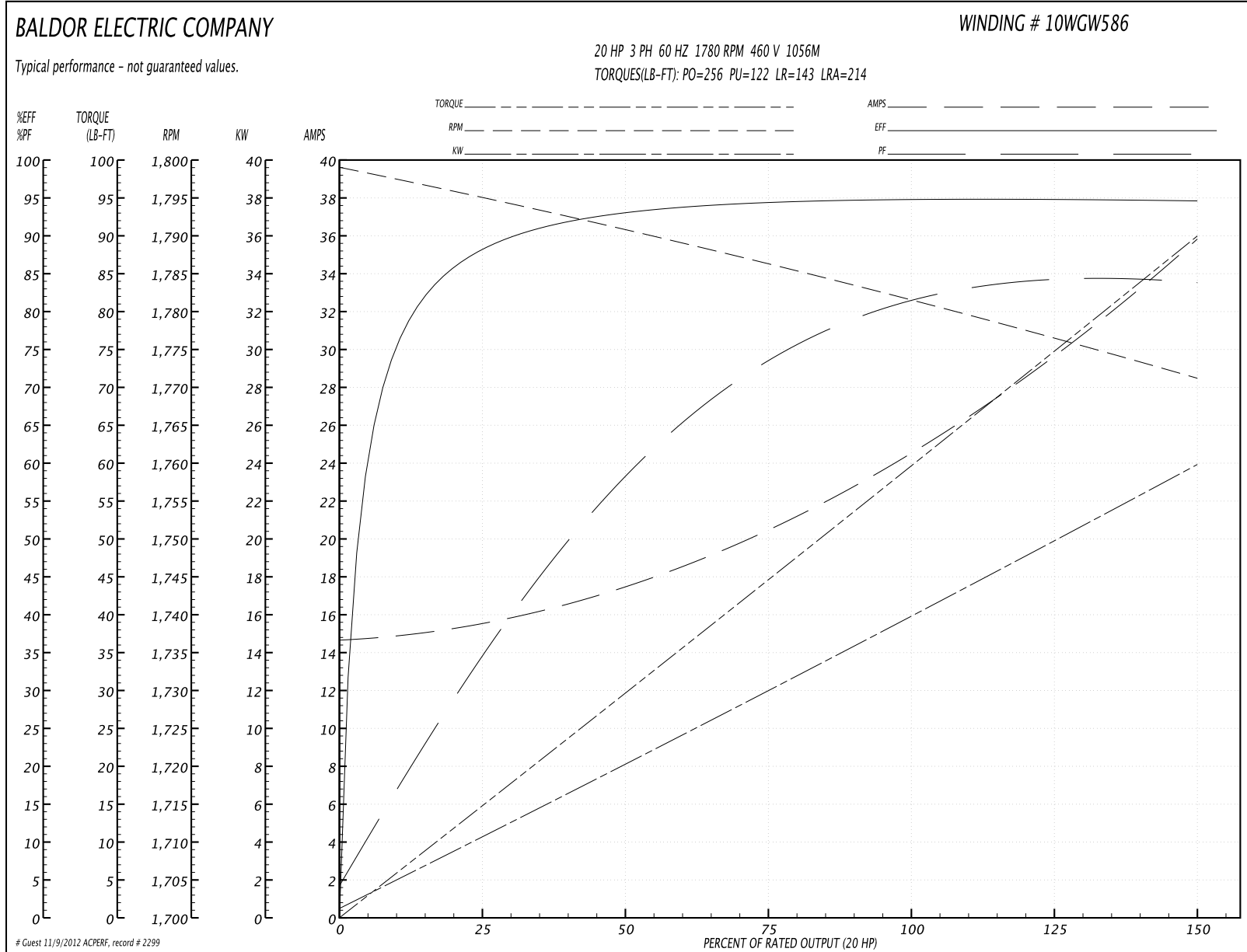
**General Characteristics**

<b>Full Load Torque:</b>	60.0 LB-FT	<b>Start Configuration:</b>	DOL
<b>No-Load Current:</b>	15.5 Amps	<b>Break-Down Torque:</b>	256.0 LB-FT
<b>Line-line Res. @ 25°C.:</b>	0.242 Ohms A Ph / 0.0 Ohms B Ph	<b>Pull-Up Torque:</b>	122.0 LB-FT
<b>Temp. Rise @ Rated Load:</b>	87 C	<b>Locked-Rotor Torque:</b>	143.0 LB-FT
<b>Temp. Rise @ S.F. Load:</b>		<b>Starting Current:</b>	214.0 Amps

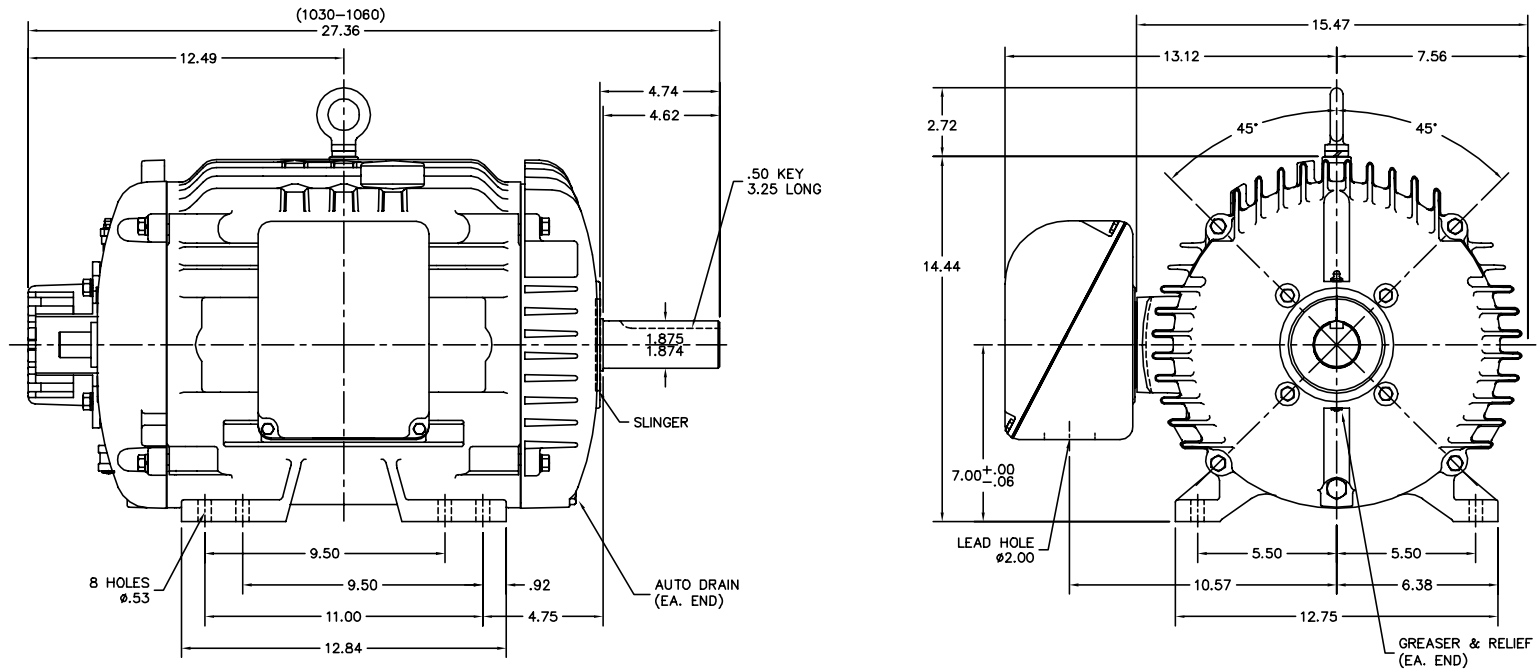
**Load Characteristics**

% of Rated Load	25	50	75	100	125	150	S.F.
<b>Power Factor:</b>	37.0	59.0	71.0	78.0	82.0	84.0	0.0
<b>Efficiency:</b>	88.3	93.1	94.4	94.8	94.8	94.6	0.0
<b>Speed:</b>	1795.0	1791.0	1786.0	1781.0	1777.0	1771.0	0.0
<b>Line Amperes:</b>	14.4	17.1	20.8	25.3	30.1	35.3	0.0

Performance Graph at 460V, 60Hz, 20.0HP Typical performance - Not guaranteed values



10LYF681



CUSTOMER IS RESPONSIBLE FOR DETERMINING THAT MOTOR PERFORMANCE IS SUITABLE IN THE APPLICATION.

REV. DESC: CHG FREP TO A105 & ADDED HA6881			
REV. LTR: A	BY: RAR	REVISED: 11:55:24 02/23/2004	TDR: 303784
FILE: AAA00112039		REF: 10LYF681	
MTL: -			

**BALDOR ELECTRIC Co.**

STD HORZ TENV 284-6T INV W/THRU SHAFT ENCODER DESIGN & COVER

10LYF681



CD0005



LOW VOLTAGE  
(2Y)



LINE

HIGH VOLTAGE  
(1Y)



LINE

NOTES:

1. INTERCHANGE ANY TWO LINE LEADS TO REVERSE ROTATION.
2. OPTIONAL THERMOSTATS ARE PROVIDED WHEN SPECIFIED.
3. ACTUAL NUMBER OF INTERNAL PARALLEL CIRCUITS MAY BE A MULTIPLE OF THOSE SHOWN ABOVE.
4. LEAD COLORS ARE OPTIONAL. LEADS MUST ALWAYS BE NUMBERED AS SHOWN.

REV. DESC: REVISE TO SHOW OPTIONAL COLORS			
REV. LTR: E	BY: JLP	REVISED: 01/19/99 10:15	TDR: 0171435
90000		FILE: AAA00005140	MDL: -
		MTL: -	

**BALDOR ELECTRIC Co.**

3PH, DV, 9 LEADS

CD0005