

# **BALDOR**® • **RELIANCE**

## **Product Information Packet**

# **IDVSNM2333T**

**15HP,1775RPM,3PH,60HZ,256TC,TENV,FOOT,**

Copyright © All product information within this document is subject to Baldor Electric Company copyright © protection, unless otherwise noted.

| Part Detail |       |             |       |                |          |               |            |
|-------------|-------|-------------|-------|----------------|----------|---------------|------------|
| Revision:   | B     | Status:     | PRD/A | Change #:      |          | Proprietary:  | No         |
| Type:       | AC    | Prod. Type: | 0948M | Elec. Spec:    | 09WGX946 | CD Diagram:   |            |
| Enclosure:  | TENV  | Mfg Plant:  |       | Mech. Spec:    | 09F278   | Layout:       |            |
| Frame:      | 256TC | Mounting:   | F1    | Poles:         | 04       | Created Date: | 02-14-2012 |
| Base:       | RG    | Rotation:   | R     | Insulation:    | F        | Eff. Date:    | 07-31-2012 |
| Leads:      | 9#12  | Literature: |       | Elec. Diagram: |          | Replaced By:  |            |

| Nameplate NP1163L |                |         |         |       |      |   |  |
|-------------------|----------------|---------|---------|-------|------|---|--|
| CAT NO            | IDVSNM2333T    |         |         |       |      |   |  |
| SPEC.             | 09F278X946G2   |         |         |       |      |   |  |
| FRAME             | 256TC          | HP      | 15 TE   |       |      |   |  |
| VOLTS             | 230/460        |         |         |       |      |   |  |
| MAG CUR           | 17.8/8.9       | FLA     | 37/18.5 |       |      |   |  |
| RPM               | 1765           | RPM MAX | 2700    |       |      |   |  |
| HZ                | 60             | PH      | 3       | CLASS | F    |   |  |
| SER.F.            | 1.00           | DES     | A       | SL HZ | 0.97 |   |  |
| NEMA-NOM-EFF      | 94.1           | WK2     | 2.1     |       |      |   |  |
| BLWR V            |                | PH      |         | HZ    |      | A |  |
| RATING            | 40C AMB-CONT   |         |         |       |      |   |  |
| DE BRG            | 6309           | ODE BRG | 6208    |       |      |   |  |
| CC                |                | SN      |         |       |      |   |  |
|                   | 1.5:1 C HP PWM |         |         |       |      |   |  |

| Parts List   |  |          |
|--------------|--|----------|
| Part Number  | Description                              | Quantity |
| SA238946     | SA 09F278X946G2                          | 1.000 EA |
| RA225858     | RA 09F278X946G2                          | 1.000 EA |
| HW1002A63    | WASHER, 5/8 HI-COLLAR SPRLCKWASHER       | 1.000 EA |
| 09CB3002SP   | CB W/1.38 LEAD HOLE FOR 37, 39, 307 & 30 | 1.000 EA |
| 09GS1000SP   | GASKET-CONDUIT BOX, 1/16 THICK LEXIDE    | 1.000 EA |
| 10XN2520K12  | 1/4-20 X.75 GRD 5                        | 2.000 EA |
| HW1001A25    | LOCKWASHER 1/4, ZINC PLT .493 OD, .255 I | 2.000 EA |
| WD1000B17    | KPA-8C BURNDY TERMINAL                   | 1.000 EA |
| 11XW1032G06  | 10-32 X .38, TAPTITE II, HEX WSHR SLTD U | 1.000 EA |
| 09EP1100A119 | FREP TEBC/TENV W/THRU SHAFT ENCODER DESI | 1.000 EA |
| HA4051A00    | PLASTIC CAP FOR GREASE FITTING           | 1.000 EA |
| 10XN2520K12  | 1/4-20 X.75 GRD 5                        | 1.000 EA |
| HW1001A25    | LOCKWASHER 1/4, ZINC PLT .493 OD, .255 I | 1.000 EA |
| XY3816A12    | 3/8-16 FINISHED NUT                      | 4.000 EA |
| HW1001A38    | LOCKWASHER 3/8, ZINC PLT .688 OD, .382 I | 4.000 EA |
| HA6881       | BEI HS35 THRU SHAFT ENCODER PROTECTIVE C | 1.000 EA |
| HW5100A08    | W3118-035 WVY WSHR (WB)                  | 1.000 EA |
| 10XN2520K28  | 1/4-20 X 1.75" HX HD SCRWGRADE 5, ZINC P | 2.000 EA |
| HW1001A25    | LOCKWASHER 1/4, ZINC PLT .493 OD, .255 I | 2.000 EA |
| 10XN2520K36  | 1/4-20 X 2.25" HX HD SCRWGRADE 5, ZINC P | 4.000 EA |
| HW1001A25    | LOCKWASHER 1/4, ZINC PLT .493 OD, .255 I | 4.000 EA |
| 09EP1300A12  | ENDPLATE, MACH                           | 1.000 EA |
| HA4051A00    | PLASTIC CAP FOR GREASE FITTING           | 1.000 EA |
| HW4600B44SP  | V-RING SLINGER 1.500 X 2.290 X 0.280     | 1.000 EA |

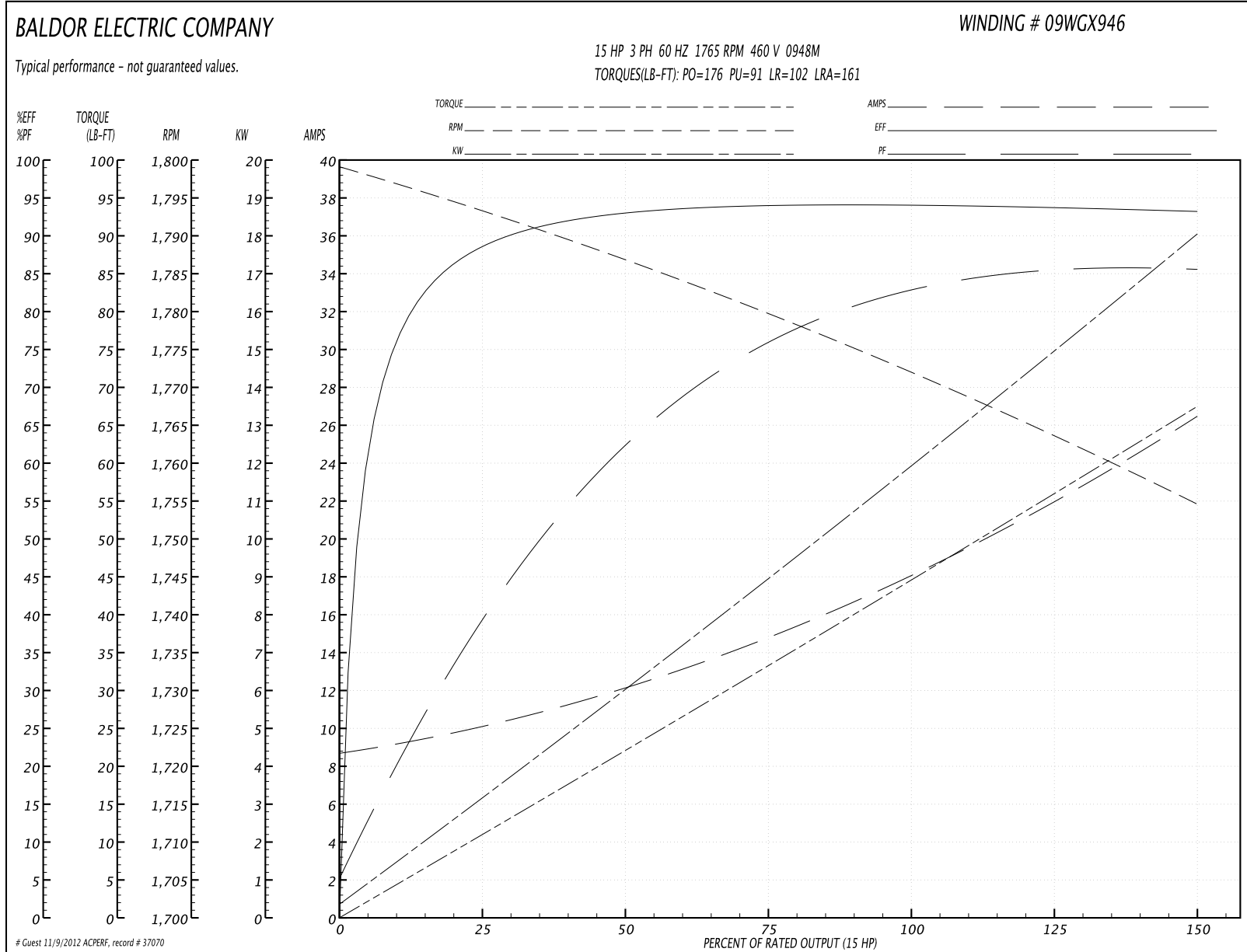
| Parts List (continued) |  |          |
|------------------------|--|----------|
| Part Number            | Description                              | Quantity |
| HA3113A03              | THRUBOLT 3/8-16 X 14.125                 | 4.000 EA |
| HW1001A38              | LOCKWASHER 3/8, ZINC PLT .688 OD, .382 I | 4.000 EA |
| 10XN3816K12            | 3/8-16 X 3/4 HEX HD CAP GRADE 5          | 3.000 EA |
| HW1001A38              | LOCKWASHER 3/8, ZINC PLT .688 OD, .382 I | 3.000 EA |
| 09CB3501SP             | CONDUIT BOX LID FOR 09CB3001 & 09CB3002  | 1.000 EA |
| 09GS1013SP             | 09 GS FOR 09CB3501 LID - LEXIDE          | 1.000 EA |
| 51XW2520A12            | .25-20 X .75, TAPTITE II, HEX WSHR SLTD  | 2.000 EA |
| HW2501G25              | KEY, 3/8 SQ X 2.875                      | 1.000 EA |
| LB1115                 | LABEL,LIFTING DEVICE                     | 1.000 EA |
| HW4500A03              | GREASE FITTING, .125 NPT 1610(ALEMITE) 8 | 1.000 EA |
| HW4500A17              | 317400 ALEMITE GREASE RELIEF             | 1.000 EA |
| HA4001A01SP            | DRAIN PLUG, PLASTIC (MICRO PLAS)         | 1.000 EA |
| MJ1000A75              | GREASE, POLYREX EM EXXON                 | 0.080 LB |
| HW4500A03              | GREASE FITTING, .125 NPT 1610(ALEMITE) 8 | 1.000 EA |
| HW4500A17              | 317400 ALEMITE GREASE RELIEF             | 1.000 EA |
| HA4001A01SP            | DRAIN PLUG, PLASTIC (MICRO PLAS)         | 1.000 EA |
| MG1000G27              | PAINT- S9282E CHARCOAL GREY              | 0.050 GA |
| 85XU0407A04            | #4-7 X 1/4 DRIVE PIN                     | 2.000 EA |
| LB5040                 | INSTRUCTION TAG, AC & DC                 | 1.000 EA |
| LB1119                 | WARNING LABEL                            | 1.000 EA |
| LB1125C01              | STD (STOCK) CARTON LABEL BALDOR WITH FLA | 4.000 EA |
| LC0005                 | CONN.DIA.,TY M,9-LD,DUAL VOLT,REVERSING  | 1.000 EA |
| NP1163L                | ALUM INV UL CSA CC                       | 1.000 EA |
| 09PA1000               | PACKAGING GROUP COMBINED PRINT           | 1.000 EA |

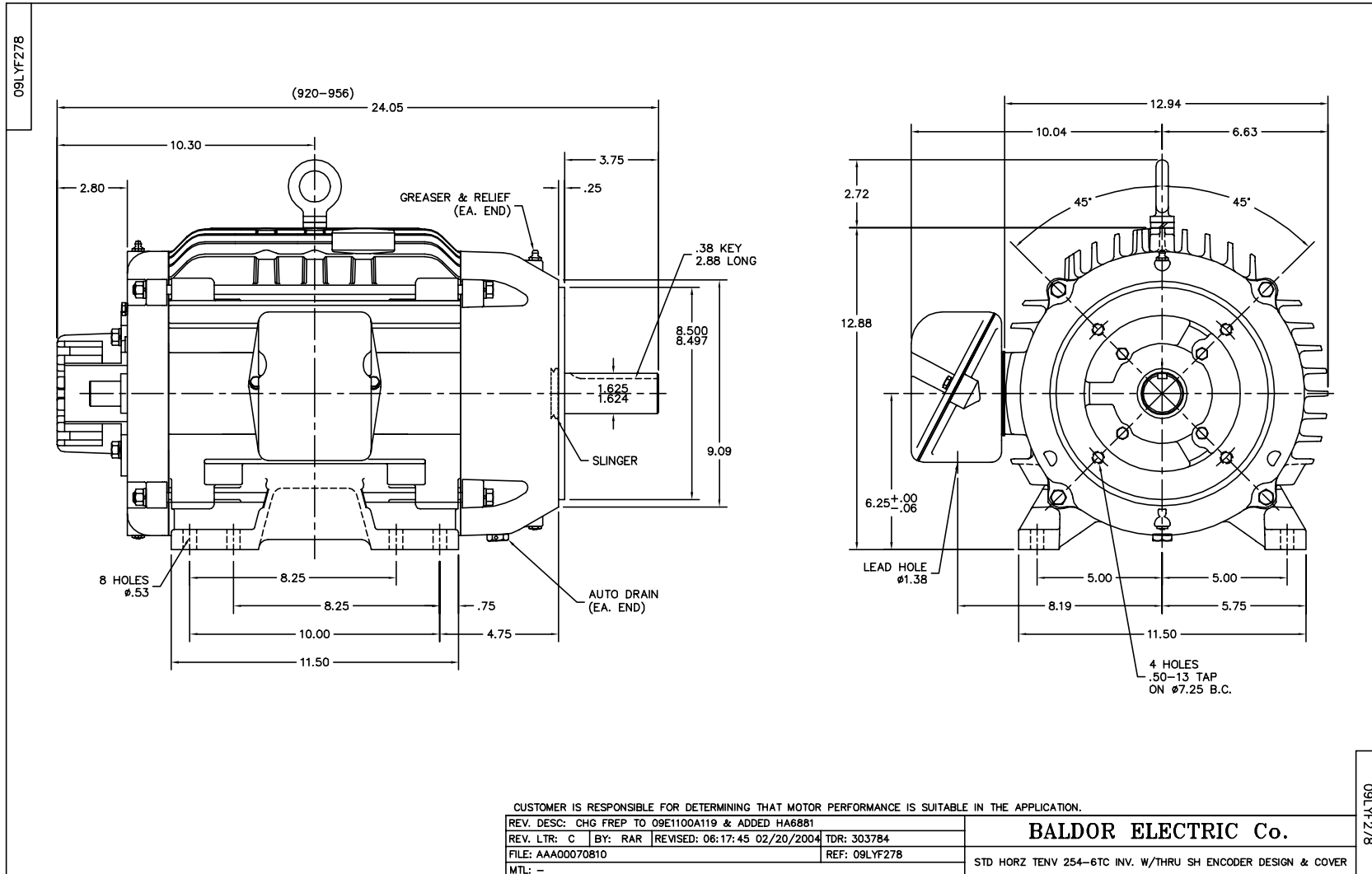
**Performance Data at 460V, 60Hz, 15.0HP (Typical performance - Not guaranteed values)**

| General Characteristics  |                                 |                      |             |
|--------------------------|---------------------------------|----------------------|-------------|
| Full Load Torque:        | 45.0 LB-FT                      | Start Configuration: | DOL         |
| No-Load Current:         | 8.9 Amps                        | Break-Down Torque:   | 176.0 LB-FT |
| Line-line Res. @ 25°C.:  | 0.464 Ohms A Ph / 0.0 Ohms B Ph | Pull-Up Torque:      | 91.0 LB-FT  |
| Temp. Rise @ Rated Load: | 89 C                            | Locked-Rotor Torque: | 102.0 LB-FT |
| Temp. Rise @ S.F. Load:  |                                 | Starting Current:    | 161.0 Amps  |

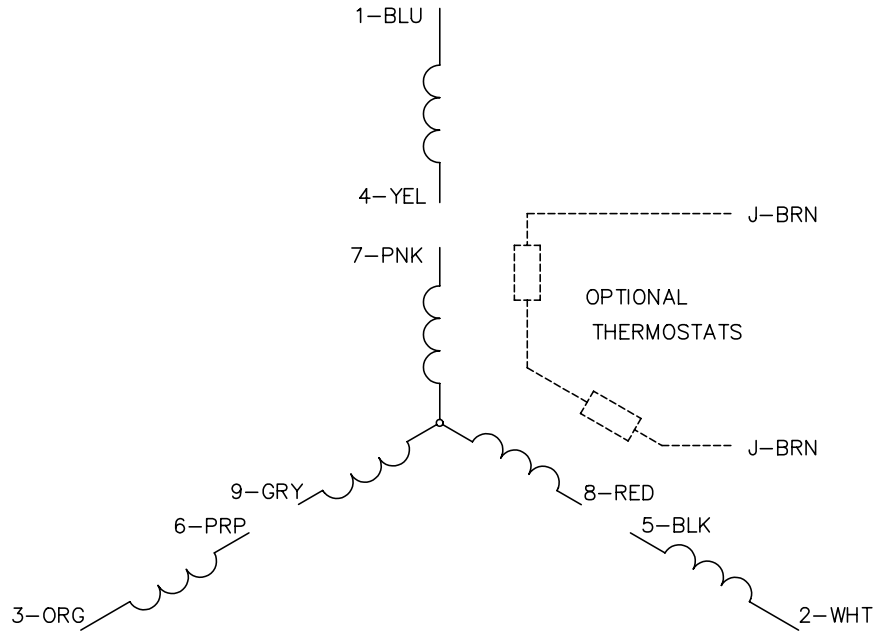
| Load Characteristics |        |        |        |        |        |        |      |
|----------------------|--------|--------|--------|--------|--------|--------|------|
| % of Rated Load      | 25     | 50     | 75     | 100    | 125    | 150    | S.F. |
| Power Factor:        | 40.0   | 63.0   | 74.0   | 81.0   | 84.0   | 86.0   | 0.0  |
| Efficiency:          | 88.7   | 93.0   | 94.0   | 94.1   | 93.7   | 93.2   | 0.0  |
| Speed:               | 1793.0 | 1787.0 | 1780.0 | 1771.0 | 1763.0 | 1755.0 | 0.0  |
| Line Amperes:        | 9.9    | 12.0   | 15.0   | 18.4   | 22.2   | 26.3   | 0.0  |

Performance Graph at 460V, 60Hz, 15.0HP Typical performance - Not guaranteed values





CD0005

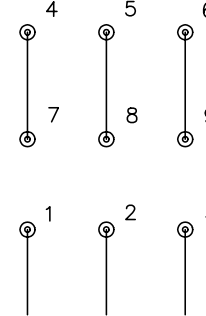


LOW VOLTAGE  
(2Y)



LINE

HIGH VOLTAGE  
(1Y)



LINE

NOTES:

1. INTERCHANGE ANY TWO LINE LEADS TO REVERSE ROTATION.
2. OPTIONAL THERMOSTATS ARE PROVIDED WHEN SPECIFIED.
3. ACTUAL NUMBER OF INTERNAL PARALLEL CIRCUITS MAY BE A MULTIPLE OF THOSE SHOWN ABOVE.
4. LEAD COLORS ARE OPTIONAL. LEADS MUST ALWAYS BE NUMBERED AS SHOWN.

|   |         |                         |              |
|---|---------|-------------------------|--------------|
| REV. DESC: REVISE TO SHOW OPTIONAL COLORS |         |                         |              |
| REV. LTR: E                               | BY: JLP | REVISED: 01/19/99 10:15 | TDR: 0171435 |
| 90000                                     |         | FILE: AAA00005140       | MDL: -       |
|   |         | MTL: -                  |              |

**BALDOR ELECTRIC Co.**

3PH, DV, 9 LEADS

CD0005