

BALDOR® • **RELIANCE**

Product Information Packet

IDVSNM3534

.33HP,1750RPM,3PH,60HZ,56C,3513M,TENV,F1

Copyright © All product information within this document is subject to Baldor Electric Company copyright © protection, unless otherwise noted.

Part Detail									
Revision:	-	Status:	PRD/A	Change #:		Proprietary:	No		
Type:	AC	Prod. Type:	3513M	Elec. Spec:	35WGN563	CD Diagram:			
Enclosure:	TENV	Mfg Plant:		Mech. Spec:	35T995	Layout:			
Frame:	56C	Mounting:	F1	Poles:	04	Created Date:	09-17-2012		
Base:	RG	Rotation:	R	Insulation:	H	Eff. Date:	09-19-2012		
Leads:	9#18	Literature:		Elec. Diagram:		Replaced By:			
Nameplate NP1162L									
CAT NO	IDVSNM3534								
SPEC.	35T995N563G2								
FRAME	56C	HP	.33 TE						
VOLTS	230/460								
MAG CUR	.8/.4	FLA	1.1/.55						
RPM	1750	RPM MAX	6000						
HZ	60	PH	3	CLASS	H				
SER.F.	1.00	DES	B	SL HZ	1.7				
NEMA-NOM-EFF	80	WK2	0.0768						
BLWR V		PH		HZ		A			
RATING	40C AMB-CONT								
DE BRG	6205	ODE BRG	6203						
CC		SN							

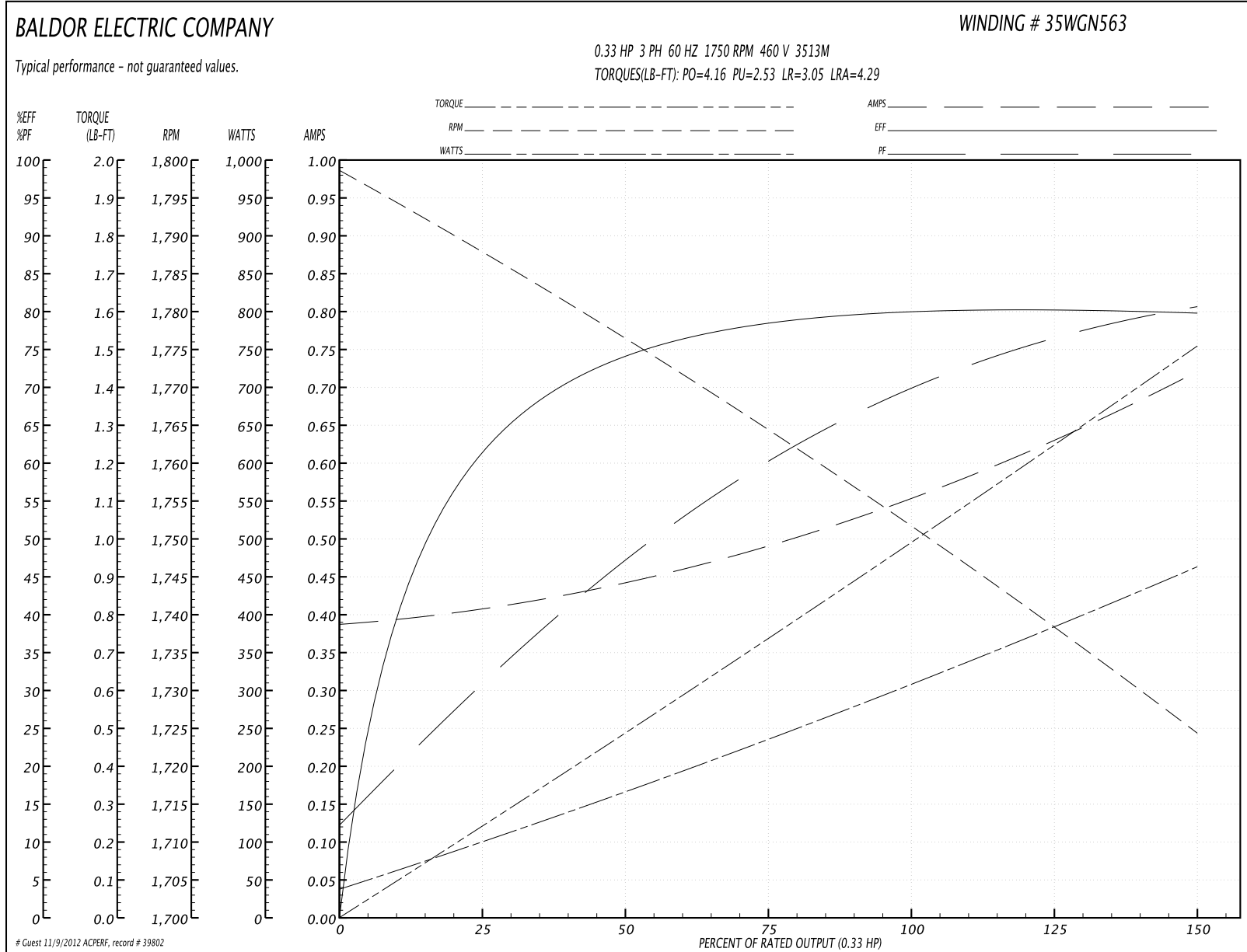
Parts List		
Part Number	Description	Quantity
SA251177	SA 35T995N563G2	1.000 EA
RA238019	RA 35T995N563G2	1.000 EA
NS2512A01	INSULATOR, CONDUIT BOX X	1.000 EA
35CB3007	35 CB CASTING W/.88 DIA. LEAD HOLE	1.000 EA
36GS1000SP	GASKET-CONDUIT BOX, .06 THICK #SV-330 LE	1.000 EA
51XB1016A07	10-16 X 7/16 HXWSSLD SERTYB	2.000 EA
11XW1032G06	10-32 X .38, TAPTITE II, HEX WSHR SLTD U	1.000 EA
35EP3100M74	FRONT TENV 203 BRG W/O GRSR W/ THRU SH E	1.000 EA
HW5100A03SP	WAVY WASHER (W1543-017)	1.000 EA
35EP3300A33	SPL FACE MTD EP -ENCL-205 BRG	1.000 EA
51XN1032A20	10-32 X 1 1/4 HX WS SL SR	2.000 EA
35FH4801G	THRU-SHAFT ENCODER COVER INV/VECTOR F1 &	1.000 EA
WD4129	1.50 X 1.50 GRAY SNAP IN PLUG PROMOULD #	2.000 EA
10XN2520A08	1/4-20X1/2 HEX HEAD CAP	4.000 EA
10XN2520A08	1/4-20X1/2 HEX HEAD CAP	1.000 EA
35CB4521GX	CONDUIT BOX LID KIT	1.000 EA
51XW0832A07	8-32 X .44, TAPTITE II, HEX WSHR SLTD SE	4.000 EA
HW2501D13SP	KEY, 3/16 SQ X 1.375	1.000 EA
HA7000A04	KEY RETAINER 0.625 DIA SHAFTS	1.000 EA
MJ5004A05	#242-21 LOCTITE GENERAL PURPOSE MED. STR	0.005 EA
85XU0407S04	4X1/4 U DRIVE PIN STAINLESS	2.000 EA
MJ1000A75	GREASE, POLYREX EM EXXON	0.050 LB
MG1000N49	PAINT, 678.50 WILKO, REL GRN (55 GA)	0.017 GA
HA3100A12	THRUBOLT 10-32 X 7.375	4.000 EA

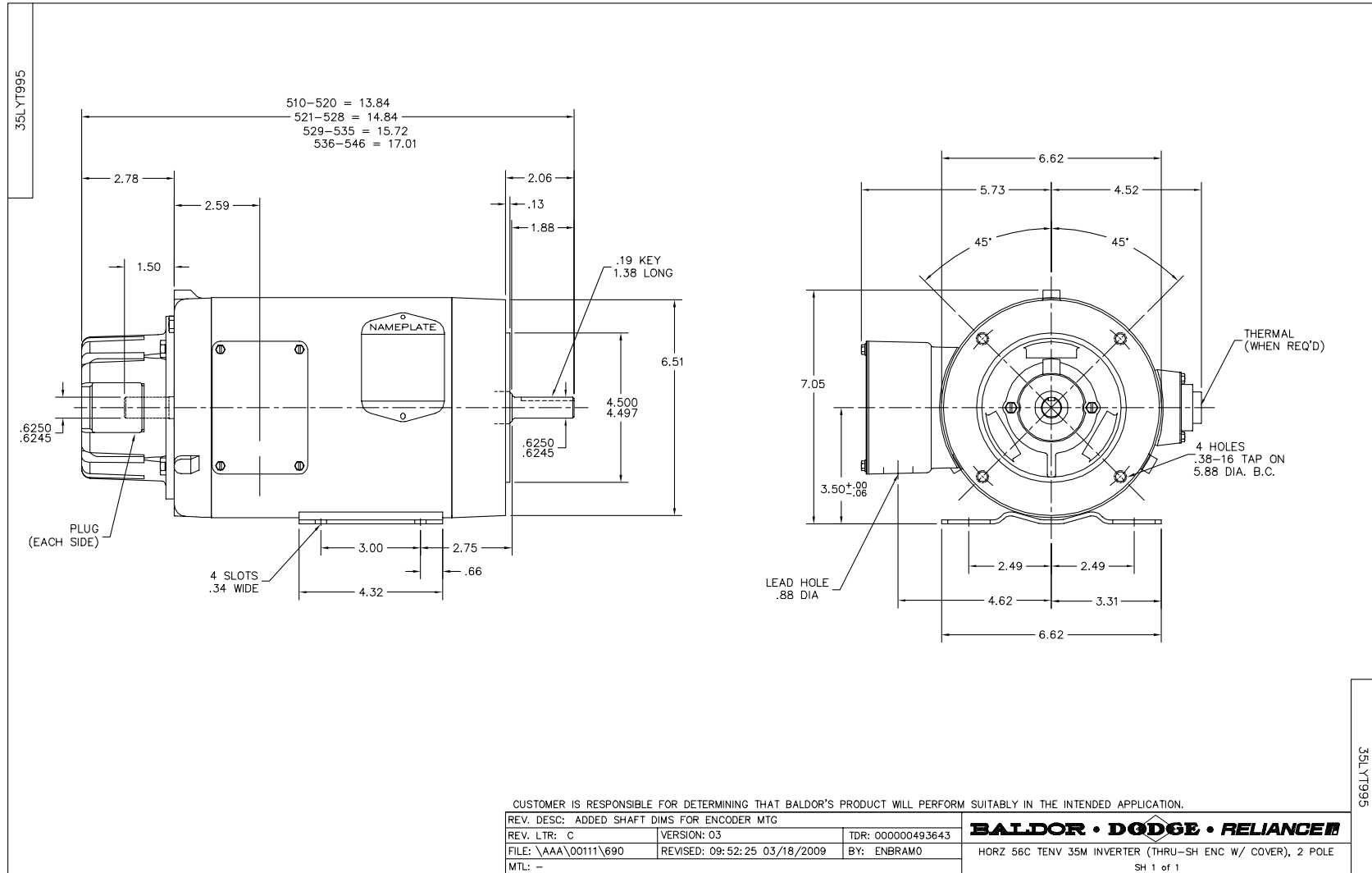
Parts List (continued)		
Part Number	Description	Quantity
LB1119	WARNING LABEL	1.000 EA
LB1125C01	STD (STOCK) CARTON LABEL BALDOR WITH FLA	1.000 EA
LC0145B01	CONNECTION LABEL	1.000 EA
NP1162L	SS INV UL CSA CC	1.000 EA
36PA1000	PACK GROUP W/LB5001	1.000 EA

Performance Data at 460V, 60Hz, 0.33HP (Typical performance - Not guaranteed values)

General Characteristics							
Full Load Torque:	0.991 LB-FT			Start Configuration:	DOL		
No-Load Current:	0.389 Amps			Break-Down Torque:	4.16 LB-FT		
Line-line Res. @ 25°C.:	54.013 Ohms A Ph / 0.0 Ohms B Ph			Pull-Up Torque:	2.53 LB-FT		
Temp. Rise @ Rated Load:	45 C			Locked-Rotor Torque:	3.05 LB-FT		
Temp. Rise @ S.F. Load:				Starting Current:	4.29 Amps		
Load Characteristics							
% of Rated Load	25	50	75	100	125	150	S.F.
Power Factor:	32.0	47.0	60.0	70.0	76.0	81.0	0.0
Efficiency:	61.6	73.8	78.5	80.2	80.4	79.9	0.0
Speed:	1786.6	1775.9	1764.4	1752.5	1739.3	1723.7	0.0
Line Amperes:	0.405	0.444	0.489	0.554	0.631	0.719	0.0

Performance Graph at 460V, 60Hz, 0.33HP Typical performance - Not guaranteed values





CD0005

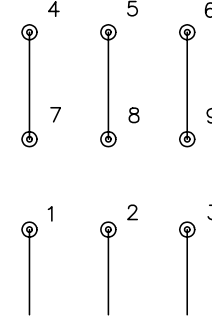


LOW VOLTAGE
(2Y)



LINE

HIGH VOLTAGE
(1Y)



LINE

NOTES:

1. INTERCHANGE ANY TWO LINE LEADS TO REVERSE ROTATION.
2. OPTIONAL THERMOSTATS ARE PROVIDED WHEN SPECIFIED.
3. ACTUAL NUMBER OF INTERNAL PARALLEL CIRCUITS MAY BE A MULTIPLE OF THOSE SHOWN ABOVE.
4. LEAD COLORS ARE OPTIONAL. LEADS MUST ALWAYS BE NUMBERED AS SHOWN.

REV. DESC: REVISE TO SHOW OPTIONAL COLORS			
REV. LTR: E	BY: JLP	REVISED: 01/19/99 10:15	TDR: 0171435
90000		FILE: AAA00005140	MDL: -
		MTL: -	

BALDOR ELECTRIC Co.

3PH, DV, 9 LEADS

CD0005