

BALDOR® • RELIANCE

Product Information Packet

IR3507M

.75HP, 1725RPM, 1PH, 60HZ, 56Y, 3524L, TEFC, F1

Copyright © All product information within this document is subject to Baldor Electric Company copyright © protection, unless otherwise noted.

Part Detail							
Revision:	E	Status:	PRD/A	Change #:		Proprietary:	No
Type:	AC	Prod. Type:	3524L	Elec. Spec:	35WGT918	CD Diagram:	
Enclosure:	TEFC	Mfg Plant:		Mech. Spec:	35K634	Layout:	
Frame:	56Y	Mounting:	F1	Poles:	04	Created Date:	02-17-2010
Base:	RG	Rotation:	R	Insulation:	B	Eff. Date:	02-29-2012
Leads:	6#18,1#16 #4TH	Literature:		Elec. Diagram:		Replaced By:	

Nameplate NP1280L										
CAT.NO.	IR3507M									
SPEC.	35K634T918G1									
HP	.75									
VOLTS	115/208-230									
AMP	9.2/4.8-4.6									
RPM	1725									
FRAME	56Y	HZ				60	PH	1		
SER.F.	1.00	CODE				K	DES	N	CL	B
NEMA-NOM-EFF	70	PF				76				
RATING	40C AMB-CONT									
CC					USABLE AT 208V					
DE	6205	ODE				6203				
ENCL	TEFC	SN								

Parts List		
Part Number	Description	Quantity
SA191045	SA 35K634T918G1	1.000 EA
RA178709	RA 35K634T918G1	1.000 EA
TPMRJ28RB	THERMAL 1PH 0.75 MAN 120C	1.000 EA
EC1645A06SP	ELEC CAP, 645-774 MFD, 125V, 2.06D X 4.	1.000 EA
ES5204	115/40A,L ,IR ,130CO,1.8D*3.4 ,4-7-51	1.000 EA
NS2512A01	INSULATOR, CONDUIT BOX X	1.000 EA
35CB3007A59	35 CB .88 DIA @ 6:00, .75 MTO W/BOOT @ 3	1.000 EA
36GS1000SP	GASKET-CONDUIT BOX, .06 THICK #SV-330 LE	1.000 EA
51XB1016A07	10-16 X 7/16 HXWSSLD SERTYB	2.000 EA
11XW1032G06	10-32 X .38, TAPTITE II, HEX WSHR SLTD U	1.000 EA
51XT0632A06	6-32X3/8 TY23 HXWS SLDSR	2.000 EA
HA6001A01	THERMAL RETAINER (PLATED)	1.000 EA
51XB1214A10	12-14 X 5/8HX WS SL SR TYBX	2.000 EA
RM1014A01SP	BUTYL RUB.THRM COV. (MENA)	1.000 EA
35EP3100M41	FREP TEFC 203 BRG W/O GRSR (RAISED FH MT	1.000 EA
NS2501A02	INSULATOR, CAPACITOR BOX	1.000 EA
35CB3801SP	CAPACITOR COVER, CAST	1.000 EA
34GS3002	GASKET, CAPACITOR BOX	1.000 EA
HA7010	CAPACITOR RETENTION CLAMP	1.000 EA
51XB1016A08	10-16X 1/2HXWSSLD SERTYB	2.000 EA
HW5100A03SP	WAVY WASHER (W1543-017)	1.000 EA
35EP3101A02SP	STD PU ENDPLATE-ENCL-205 BRG LESS GREASE	1.000 EA
XY1032A02	10-32 HEX NUT DIRECTIONAL SERRATION	4.000 EA
51XB1214A16	12-14X1.00 HXWSSLD SERTYB	2.000 EA

Parts List (continued)		
Part Number	Description	Quantity
51XW1032A06	10-32 X .38, TAPTITE II, HEX WSHR SLTD S	3.000 EA
35FH4005A32SP	IEC FH NO GRSR W/3 HOLES - W/AUTOPHERETI	1.000 EA
35CB4521GX	CONDUIT BOX LID KIT	1.000 EA
51XW0832A07	8-32 X .44, TAPTITE II, HEX WSHR SLTD SE	6.000 EA
HW2501D13SP	KEY, 3/16 SQ X 1.375	1.000 EA
HA7000A04	KEY RETAINER 0.625 DIA SHAFTS	1.000 EA
85XU0407S04	4X1/4 U DRIVE PIN STAINLESS	2.000 EA
LB1087	LABEL,MANUAL RESET (ROLL LABEL)	1.000 EA
WD1000A15	3-520132-2 AMP FLAG (4M/RL NON-CANC/NON-	4.000 EA
MJ1000A75	GREASE, POLYREX EM EXXON	0.050 LB
35FN3002A05SP	EXFN, PLASTIC, 6.376 OD, .638 ID	1.000 EA
HA3100A18	THRUBOLT 10-32 X 9.250	4.000 EA
MG1025Z20	ACTIVATOR WILKOFAS 060.32	0.010 GA
MG1025C02	PAINT, 787.105 LITE TAN EPOXY (USE W/MG1	0.017 GA
LB1119	WARNING LABEL	1.000 EA
LB1125C01	STD (STOCK) CARTON LABEL BALDOR WITH FLA	1.000 EA
NP1280L	ALUM FARM DUTY UL CSA CC THERMAL	1.000 EA
35PA1066	PACKING GROUP COMBINED PRINT	1.000 EA

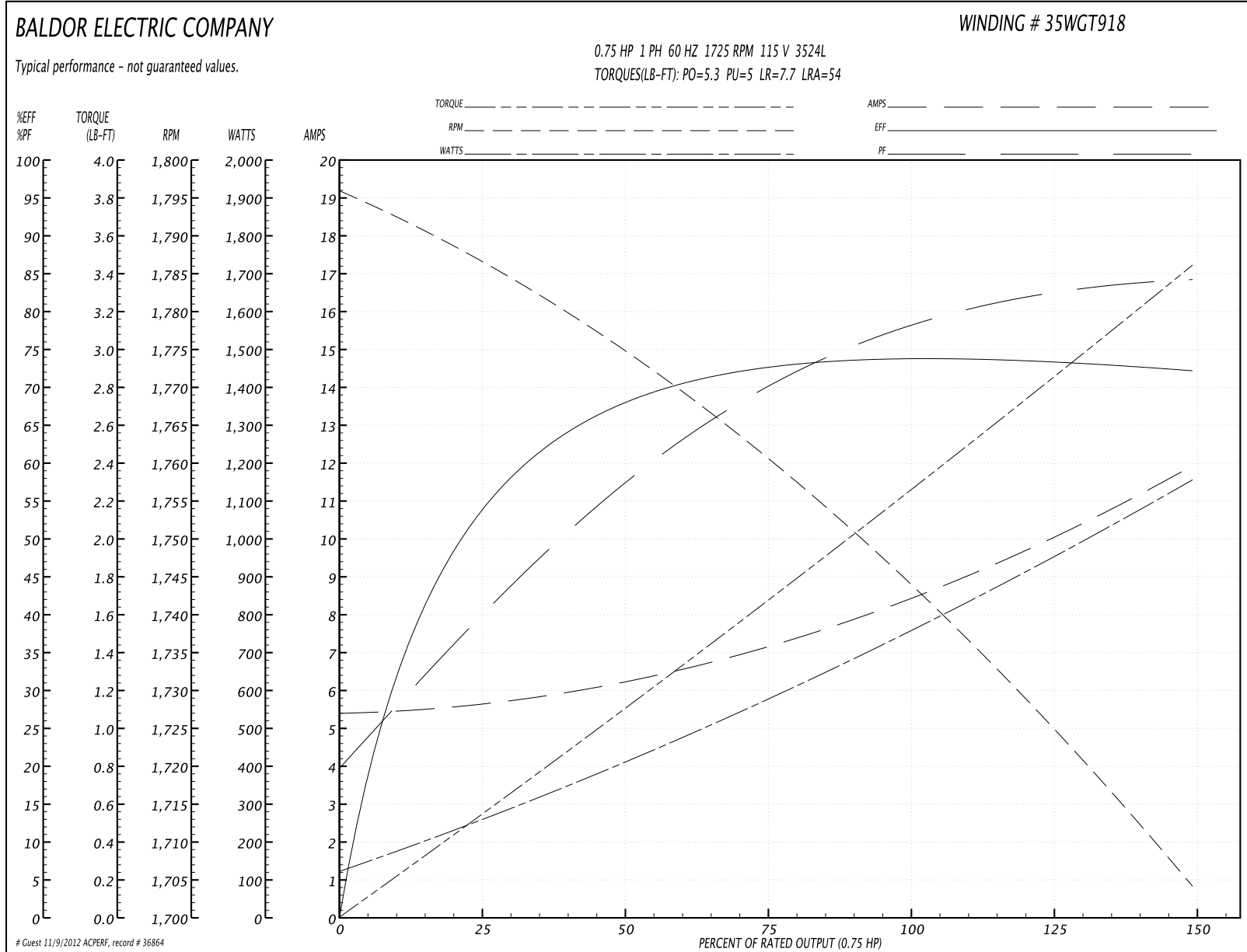
Accessories		
Part Number	Description	Multiplier
35-8762	C FACE KIT	A8
35EP1506A01SP	D-FLANGE KIT	A8

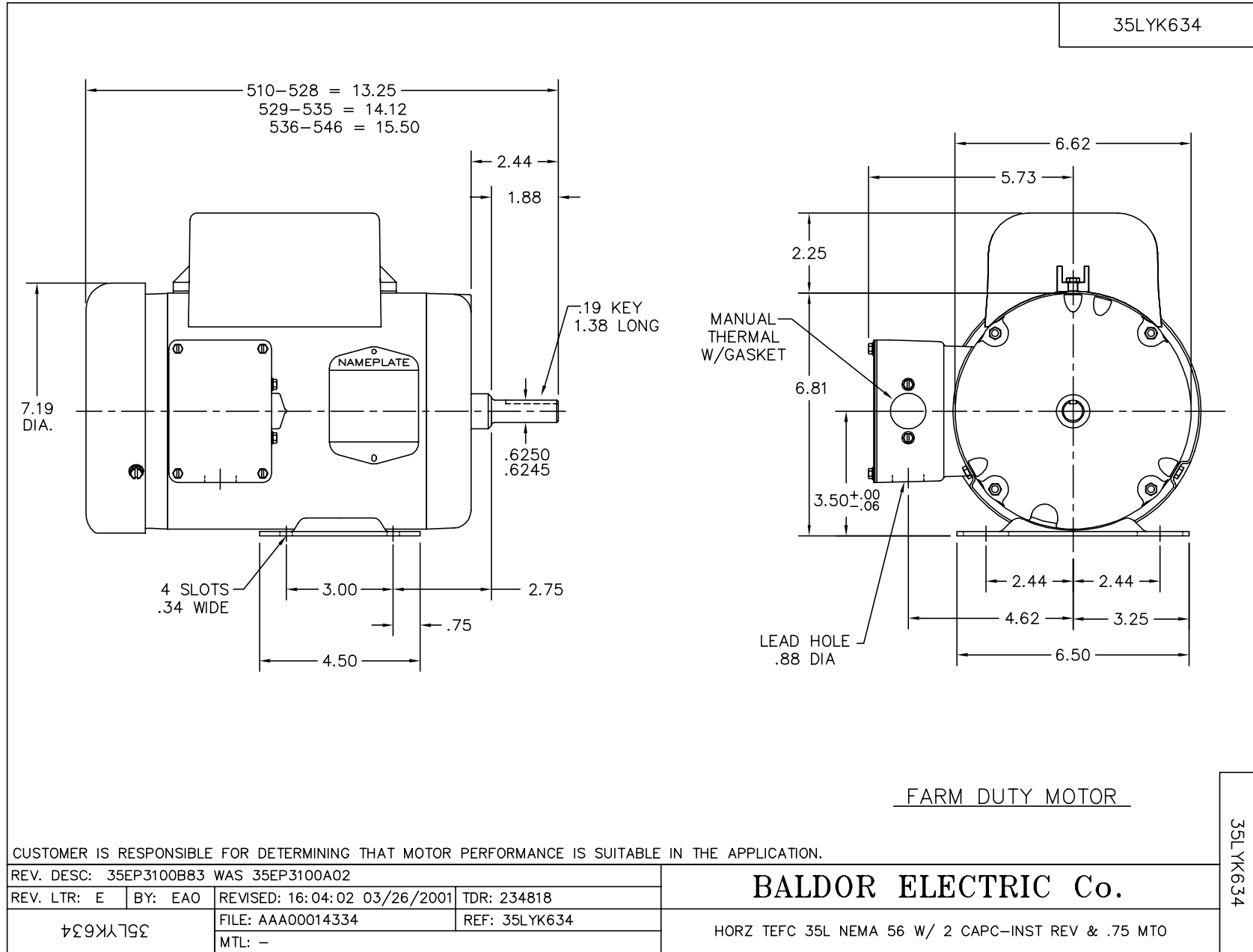
Performance Data at 115V, 60Hz, 0.75HP (Typical performance - Not guaranteed values)

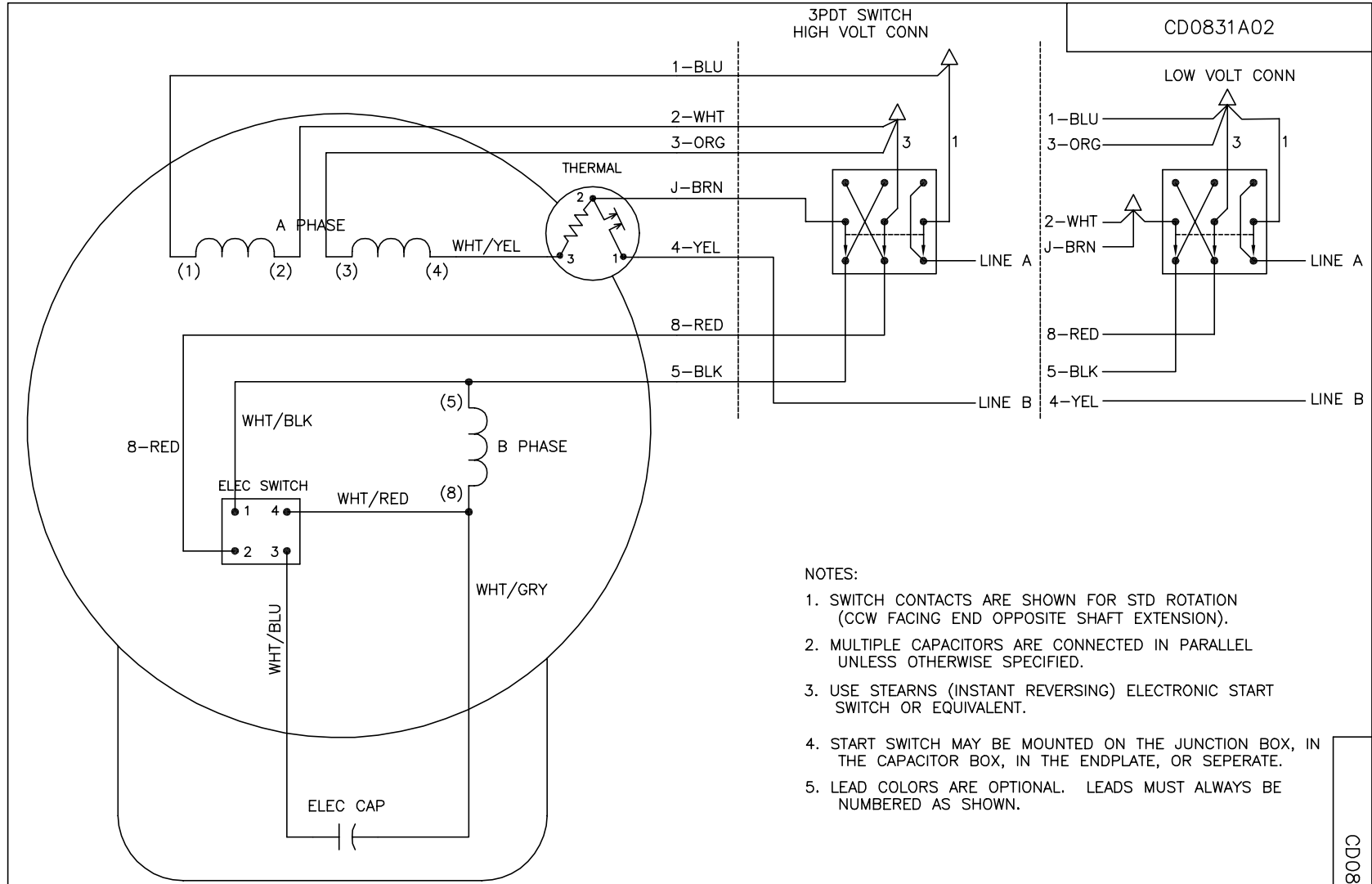
General Characteristics			
Full Load Torque:	2.3 LB-FT	Start Configuration:	DOL
No-Load Current:	5.4 Amps	Break-Down Torque:	5.3 LB-FT
Line-line Res. @ 25°C.:	0.905 Ohms A Ph / 1.82 Ohms B Ph	Pull-Up Torque:	5.0 LB-FT
Temp. Rise @ Rated Load:		Locked-Rotor Torque:	7.7 LB-FT
Temp. Rise @ S.F. Load:		Starting Current:	54.0 Amps

Load Characteristics							
% of Rated Load	25	50	75	100	125	150	S.F.
Power Factor:	42.0	58.0	72.0	78.0	83.0	84.0	0.0
Efficiency:	54.0	67.7	72.9	74.2	73.8	71.8	0.0
Speed:	1785.0	1773.0	1759.0	1744.0	1725.0	1703.0	0.0
Line Amperes:	5.6	6.4	7.2	8.6	10.0	12.0	0.0

Performance Graph at 115V, 60Hz, 0.75HP Typical performance - Not guaranteed values







NOTES:

1. SWITCH CONTACTS ARE SHOWN FOR STD ROTATION (CCW FACING END OPPOSITE SHAFT EXTENSION).
2. MULTIPLE CAPACITORS ARE CONNECTED IN PARALLEL UNLESS OTHERWISE SPECIFIED.
3. USE STEARNS (INSTANT REVERSING) ELECTRONIC START SWITCH OR EQUIVALENT.
4. START SWITCH MAY BE MOUNTED ON THE JUNCTION BOX, IN THE CAPACITOR BOX, IN THE ENDPLATE, OR SEPERATE.
5. LEAD COLORS ARE OPTIONAL. LEADS MUST ALWAYS BE NUMBERED AS SHOWN.

CD0831A02

REV. DESC: NEW		
REV. LTR: -	VERSION: 00	TDR: 000000525293
FILE: \AAA\00168\985	REVISED: 09:12:24 01/21/2010	
MTL: -	BY: ENWINBO	

BALDOR • DODGE • RELIANCE

TYPE L, DV, INST REV, THERMAL, 7 LEAD, ELECTRONIC SWITCH

SH 1 of 1