

BALDOR® • RELIANCE

Product Information Packet

JL1309A

1HP,3450RPM,1PH,60HZ,56J,3428L,OPEN,F1,N

Copyright © All product information within this document is subject to Baldor Electric Company copyright © protection, unless otherwise noted.

Part Detail							
Revision:	F	Status:	PRD/A	Change #:		Proprietary:	No
Type:	AC	Prod. Type:	3428L	Elec. Spec:	34WG3375	CD Diagram:	
Enclosure:	OPEN	Mfg Plant:		Mech. Spec:	34F156	Layout:	
Frame:	56J	Mounting:	F1	Poles:	02	Created Date:	02-18-2010
Base:	N	Rotation:	FOS	Insulation:	B	Eff. Date:	02-20-2012
Leads:	4#16 A&J,1#14 #4TH	Literature:		Elec. Diagram:		Replaced By:	

Nameplate NP1257L

CAT.NO.	JL1309A						
SPEC.	34F156-3375G3						
HP	1						
VOLTS	115/230						
AMP	14/7						
RPM	3450						
FRAME	56J	HZ	60	PH	1		
SER.F.	1.40	CODE	L	DES	N	CL	B
NEMA-NOM-EFF	65	PF	65				
RATING	40C AMB-CONT						
CC		USABLE AT 208V	8.8				
DE	6203	ODE	6203				
ENCL	OPEN	SN					
	SFA 16/8						

Parts List		
Part Number	Description	Quantity
SA191142	SA 34F156-3375G3	1.000 EA
RA178804	RA 34F156-3375G3	1.000 EA
EC1645A06SP	ELEC CAP, 645-774 MFD, 125V, 2.06D X 4.	1.000 EA
34EP3202A02	FR ENDPLATE, MACH	1.000 EA
51XW0832A07	8-32 X .44, TAPTITE II, HEX WSHR SLTD SE	3.000 EA
11XT0832G06	8-32 X 3/8 TY 23 TAPPING	1.000 EA
NS2501A01	INSULATOR, CAPACITOR	1.000 EA
51XB1016A05	10-16X5/16HX WA SL SR TYB (F/S)	2.000 EA
HW5100A03SP	WAVY WASHER (W1543-017)	1.000 EA
WD4100A01	DP-875 HEYCO PLUG OR 62MP0875 MICRO PLAS	1.000 EA
34EP3401A01SP	PU ENDPLATE, MACH	1.000 EA
34AD2000	BAFFLE PLATE, STAMPED	1.000 EA
51XT0632A06	6-32X3/8 TY23 HXWS SLDSR	4.000 EA
51XN1032A20	10-32 X 1 1/4 HX WS SL SR	2.000 EA
51XW0832A07	8-32 X .44, TAPTITE II, HEX WSHR SLTD SE	3.000 EA
34CB4501SP	TERMINAL BOX LID, STAMPED X (PLATED)	1.000 EA
51XW0832A07	8-32 X .44, TAPTITE II, HEX WSHR SLTD SE	2.000 EA
34FH4500A02P	DRIPCOVER, MODEL 34	1.000 EA
MG1000G27	PAINT- S9282E CHARCOAL GREY	0.014 GA
10XF0440S02	04-40 X 1/8 TYPE F HEX HD STAINLESS STIC	2.000 EA
LB1009	LABEL,ROTATION DIRECTION (ON ROLLS)	1.000 EA
33CB4800A02	CAPACITOR COVER, STAMPED	1.000 EA
SP5075A02	MODEL 34 TERMINAL PANEL SWITCH WITH LEAD	1.000 EA
HA3100A21	THRUBOLT 10-32 X 9.937	4.000 EA

Parts List (continued)		
Part Number	Description	Quantity
LB1118	LABEL,WARNING (ROLL LABEL)	1.000 EA
LB1125C01	STD (STOCK) CARTON LABEL BALDOR WITH FLA	1.000 EA
LC0031	CONNECTION LABEL	1.000 EA
NP1257L	ALUM UL CSA CC THERMAL REV MTG	1.000 EA
27PA1001	PACKAGING GROUP	1.000 EA
LB5040	INSTRUCTION TAG, AC & DC	1.000 EA
PK3083T	STYROFOAM PACKING CRADLE W/TAPE	1.000 EA

Performance Data at 230V, 60Hz, 1.0HP (Typical performance - Not guaranteed values)

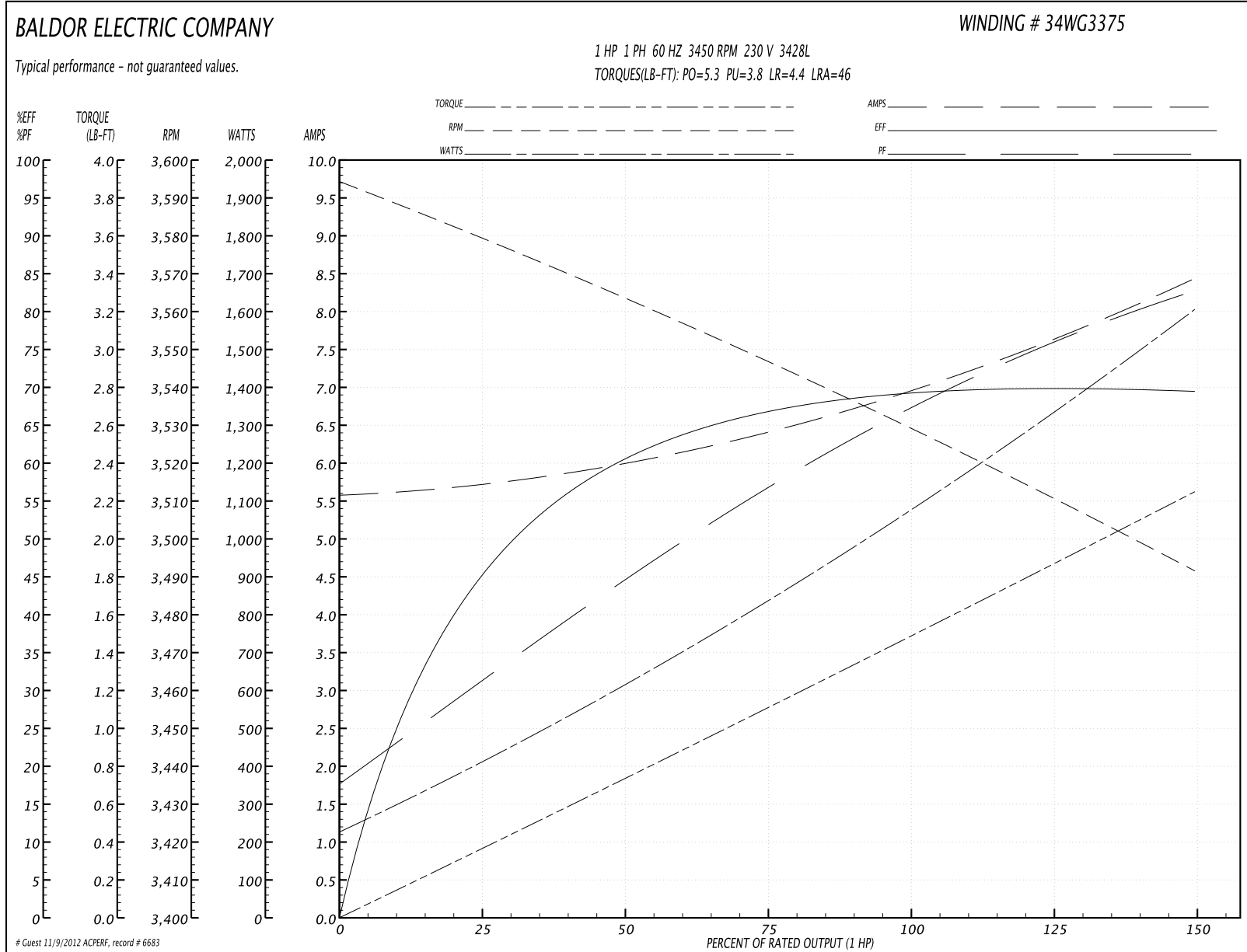
General Characteristics

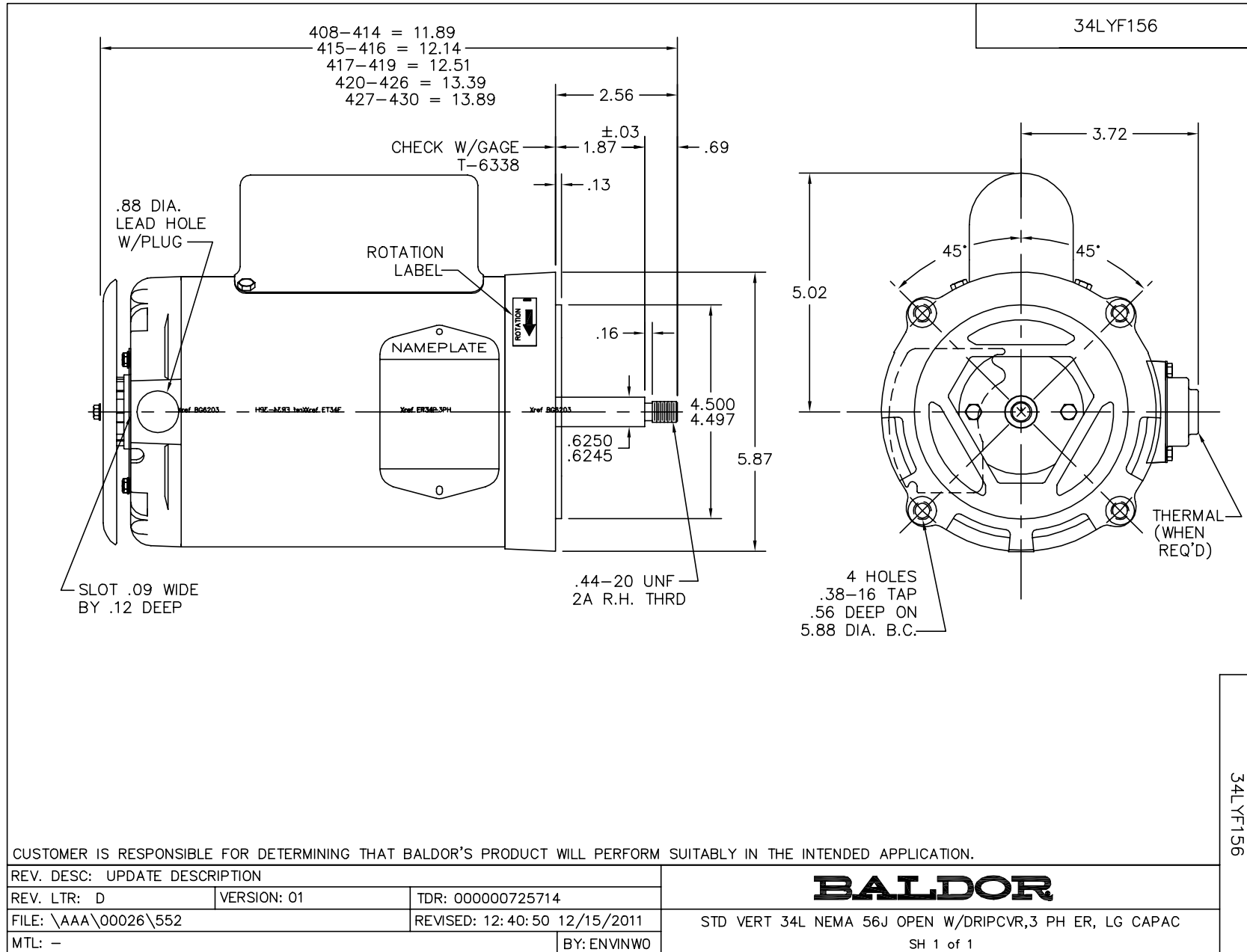
Full Load Torque:	1.5 LB-FT	Start Configuration:	DOL
No-Load Current:	5.6 Amps	Break-Down Torque:	5.3 LB-FT
Line-line Res. @ 25°C.:	1.63 Ohms A Ph / 1.64 Ohms B Ph	Pull-Up Torque:	3.8 LB-FT
Temp. Rise @ Rated Load:	37 C	Locked-Rotor Torque:	4.4 LB-FT
Temp. Rise @ S.F. Load:	47 C	Starting Current:	46.0 Amps

Load Characteristics

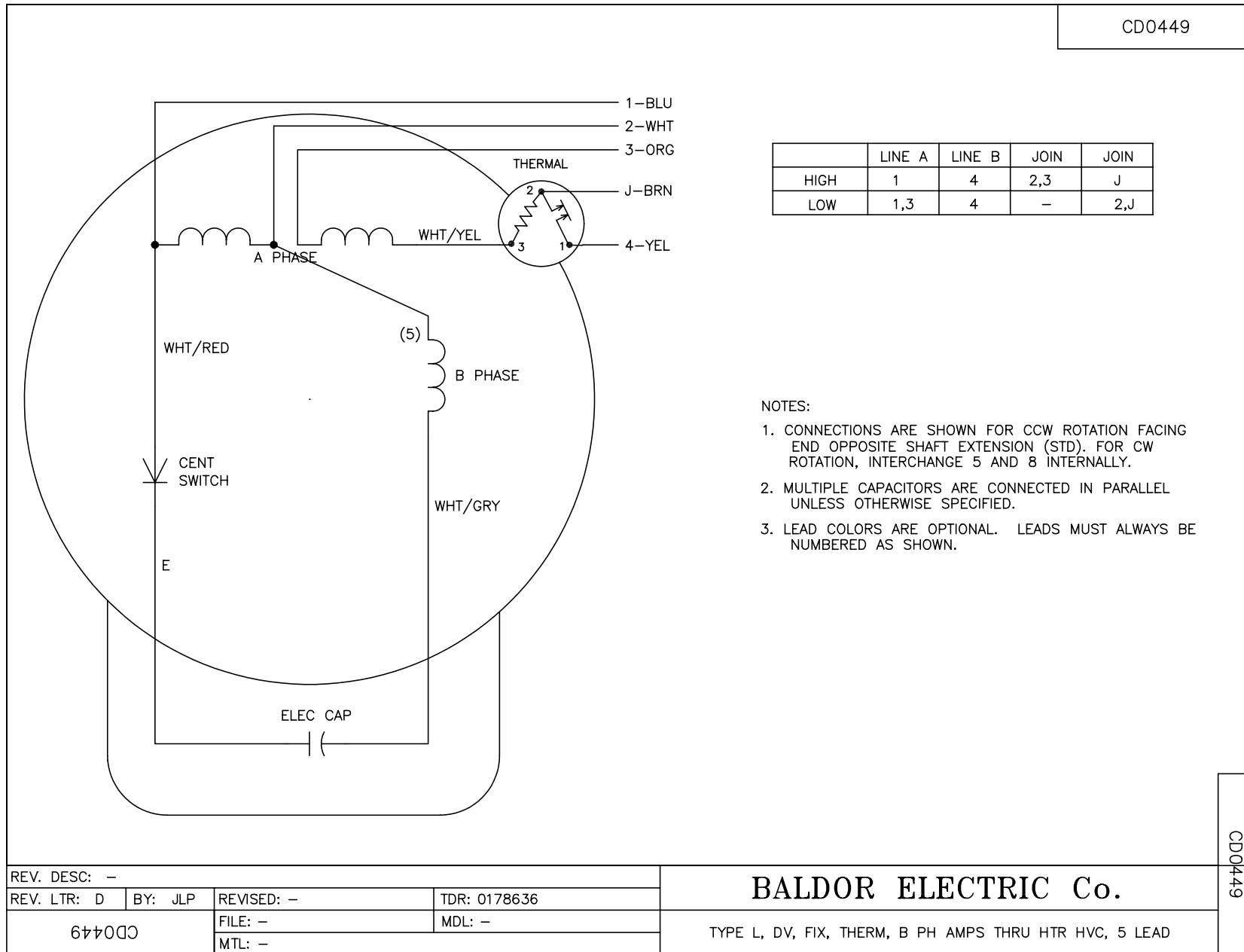
% of Rated Load	25	50	75	100	125	150	S.F.
Power Factor:	31.0	45.0	58.0	68.0	75.0	83.0	79.0
Efficiency:	47.1	60.7	66.5	69.1	70.2	69.4	70.9
Speed:	3578.0	3563.0	3546.0	3529.0	3511.0	3491.0	3500.0
Line Amperes:	5.7	6.0	6.4	7.0	7.7	8.4	8.1

Performance Graph at 230V, 60Hz, 1.0HP Typical performance - Not guaranteed values





CD0449



	LINE A	LINE B	JOIN	JOIN
HIGH	1	4	2,3	J
LOW	1,3	4	-	2,J

NOTES:

1. CONNECTIONS ARE SHOWN FOR CCW ROTATION FACING END OPPOSITE SHAFT EXTENSION (STD). FOR CW ROTATION, INTERCHANGE 5 AND 8 INTERNALLY.
2. MULTIPLE CAPACITORS ARE CONNECTED IN PARALLEL UNLESS OTHERWISE SPECIFIED.
3. LEAD COLORS ARE OPTIONAL. LEADS MUST ALWAYS BE NUMBERED AS SHOWN.

REV. DESC: -		REVISED: -		TDR: 0178636
REV. LTR: D	BY: JLP	FILE: -	MDL: -	
67400		MTL: -		

BALDOR ELECTRIC Co.

TYPE L, DV, FIX, THERM, B PH AMPS THRU HTR HVC, 5 LEAD

CD0449