

BALDOR® • RELIANCE

Product Information Packet

JL1317A

2HP,3450RPM,1PH,60HZ,56J,3528L,OPEN,F1

Copyright © All product information within this document is subject to Baldor Electric Company copyright © protection, unless otherwise noted.

Part Detail									
Revision:	AX	Status:	PRD/A	Change #:		Proprietary:	No		
Type:	AC	Prod. Type:	3528L	Elec. Spec:	35WGW183	CD Diagram:			
Enclosure:	OPEN	Mfg Plant:		Mech. Spec:	35E522	Layout:			
Frame:	56J	Mounting:	F1	Poles:	02	Created Date:	06-21-2007		
Base:	N	Rotation:	FOS	Insulation:	B	Eff. Date:	07-18-2012		
Leads:	4#14 A&J,1#18 B PH,1#1	Literature:		Elec. Diagram:		Replaced By:			
Nameplate NP1257L									
CAT.NO.	JL1317A								
SPEC.	35E522W183								
HP	2								
VOLTS	115/230								
AMP	26/13								
RPM	3450								
FRAME	56J	HZ	60	PH	1				
SER.F.	1.20	CODE	G	DES	L	CL	B		
NEMA-NOM-EFF	70	PF	69						
RATING	40C AMB-CONT								
CC	USABLE AT 208V			13					
DE	6205	ODE	6203						
ENCL	OPEN	SN							
	SFA 27.6/13.8								

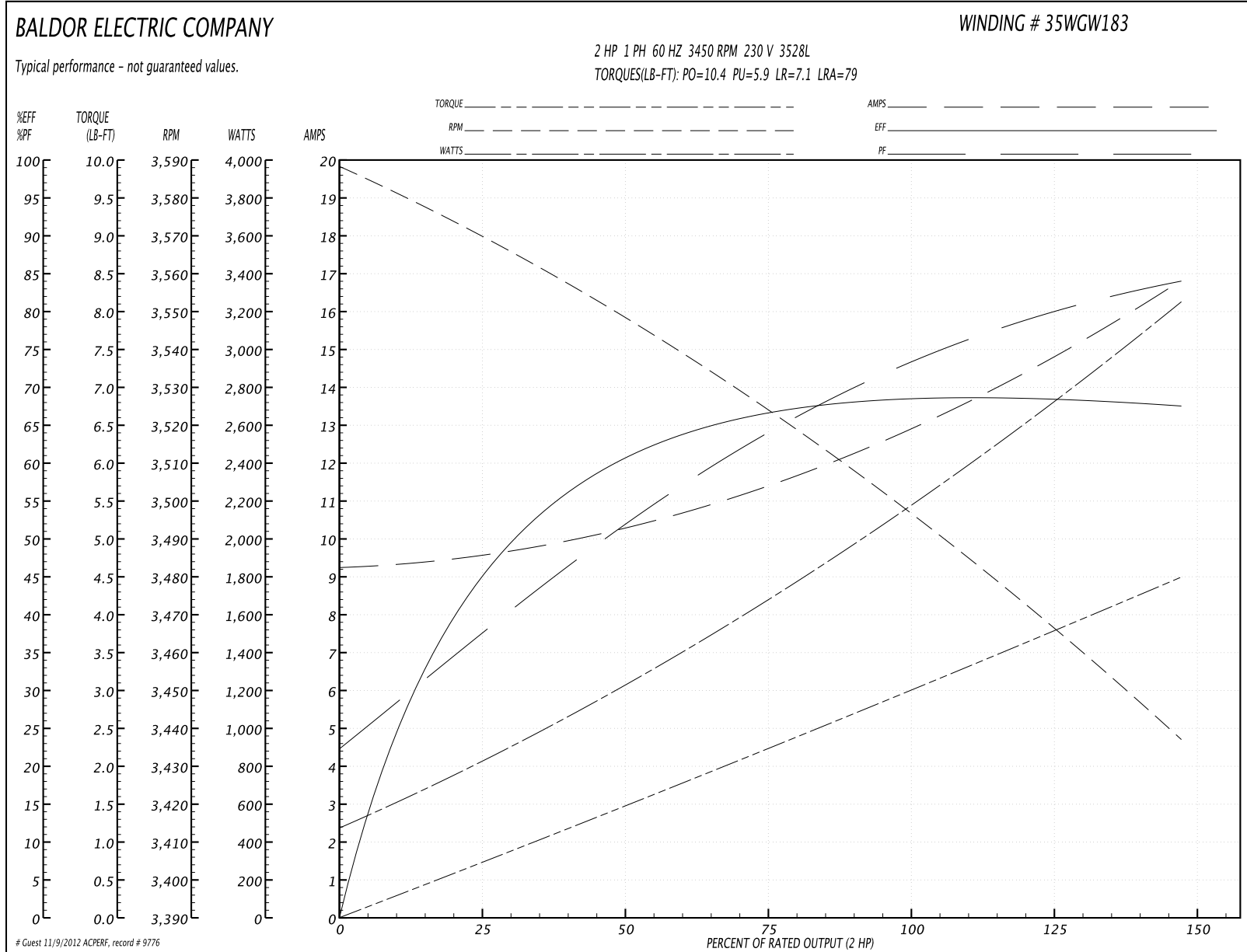
Parts List		
Part Number	Description	Quantity
SA024304	SA 35E522W183	1.000 EA
RA020354	RA 35E522W183	1.000 EA
EC1645A06SP	ELEC CAP, 645-774 MFD, 125V, 2.06D X 4.	1.000 EA
WD3006A01	RSS-2-103JT 2W 10K RES. METAL OXIDE 5%	1.000 EA
TP5059	GENERIC THERMAL KIT	1.000 EA
RM1001A01	GROMMET (MIDSTATES#541000)	1.000 EA
53XT0832G07	8-32X7/16 PN STD SR TY23G X	1.000 EA
35EP3202A02SP	FR ENDPLATE, MACH	1.000 EA
SP1033A01	INSULATOR MODEL 35 TERM PANEL	1.000 EA
51XW0832A07	8-32 X .44, TAPTITE II, HEX WSHR SLTD SE	2.000 EA
85XU0407S04	4X1/4 U DRIVE PIN STAINLESS	2.000 EA
NS2501A01	INSULATOR, CAPACITOR	1.000 EA
51XB1016A05	10-16X5/16HX WA SL SR TYB (F/S)	2.000 EA
HW5100A03SP	WAVY WASHER (W1543-017)	1.000 EA
35EP3400A02	PU ENDPLATE, MACH	1.000 EA
35AD2000	AIR BAFFLE	1.000 EA
60XW0632A06	6-32 X 3/8 TORX HEAD SCREW TAPTITE II	4.000 EA
51XN1032A20	10-32 X 1 1/4 HX WS SL SR	2.000 EA
35FH4500A02	DRIP COVER, STAMPED (W/ AUTOPHERETIC PRI	1.000 EA
51XW0832A07	8-32 X .44, TAPTITE II, HEX WSHR SLTD SE	2.000 EA
35CB4500SP	TERMINAL BOX LID STAMPED	1.000 EA
51XW0832A07	8-32 X .44, TAPTITE II, HEX WSHR SLTD SE	2.000 EA
LB1009	LABEL,ROTATION DIRECTION (ON ROLLS)	1.000 EA
MJ1000A75	GREASE, POLYREX EM EXXON	0.050 LB

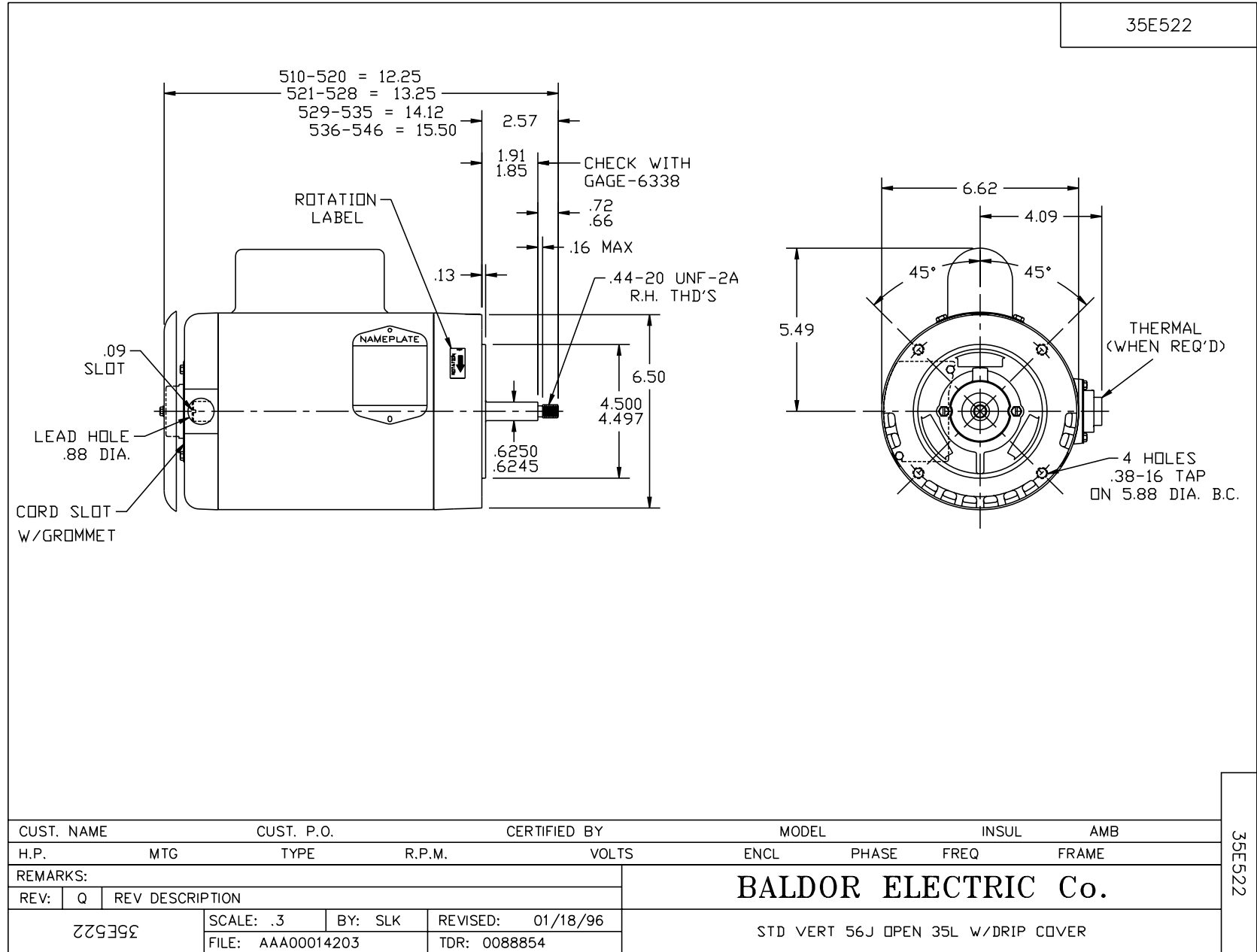
Parts List (continued)		
Part Number	Description	Quantity
MG1000G27	PAINT- S9282E CHARCOAL GREY	0.017 GA
HA3100A15	THRUBOLT 10-32 X 8.375	4.000 EA
WD1000A15	3-520132-2 AMP FLAG (4M/RL NON-CANC/NON-	2.000 EA
35CB4802A02SP	CAPACITOR COVER, STAMPED X W/AUTOPHORET	1.000 EA
35CB4802A02SP	CAPACITOR COVER, STAMPED X W/AUTOPHORET	1.000 EA
SP5066A01	MODEL 35 TERMINAL PANEL SWITCH WITH LEAD	1.000 EA
LB1118	LABEL,WARNING (ROLL LABEL)	1.000 EA
LB1125C01	STD (STOCK) CARTON LABEL BALDOR WITH FLA	1.000 EA
LC0307	CONNECTION LABEL NAMEPLA. X	1.000 EA
NP1257L	ALUM UL CSA CC THERMAL REV MTG	1.000 EA
36PA1000	PACK GROUP W/LB5001	1.000 EA
PK3082	STYROFOAM CRADLE	1.000 EA
PK6503	STRUCTURAL WOOD PSC 1X6X8MULLBERRY LUMBE	1.000 EA

Performance Data at 230V, 60Hz, 2.0HP (Typical performance - Not guaranteed values)

General Characteristics							
Full Load Torque:	3.0 LB-FT			Start Configuration:	DOL		
No-Load Current:	9.3 Amps			Break-Down Torque:	10.4 LB-FT		
Line-line Res. @ 25°C.:	0.842 Ohms A Ph / 0.843 Ohms B Ph			Pull-Up Torque:	5.9 LB-FT		
Temp. Rise @ Rated Load:	77 C			Locked-Rotor Torque:	7.1 LB-FT		
Temp. Rise @ S.F. Load:	87 C			Starting Current:	79.0 Amps		
Load Characteristics							
% of Rated Load	25	50	75	100	125	150	S.F.
Power Factor:	38.0	53.0	65.0	71.0	80.0	84.0	78.0
Efficiency:	46.0	60.0	66.0	70.0	68.0	67.5	68.4
Speed:	3569.0	3547.0	3523.0	3498.0	3469.0	3436.0	3475.0
Line Amperes:	9.5	10.3	11.4	13.0	14.7	16.8	13.8

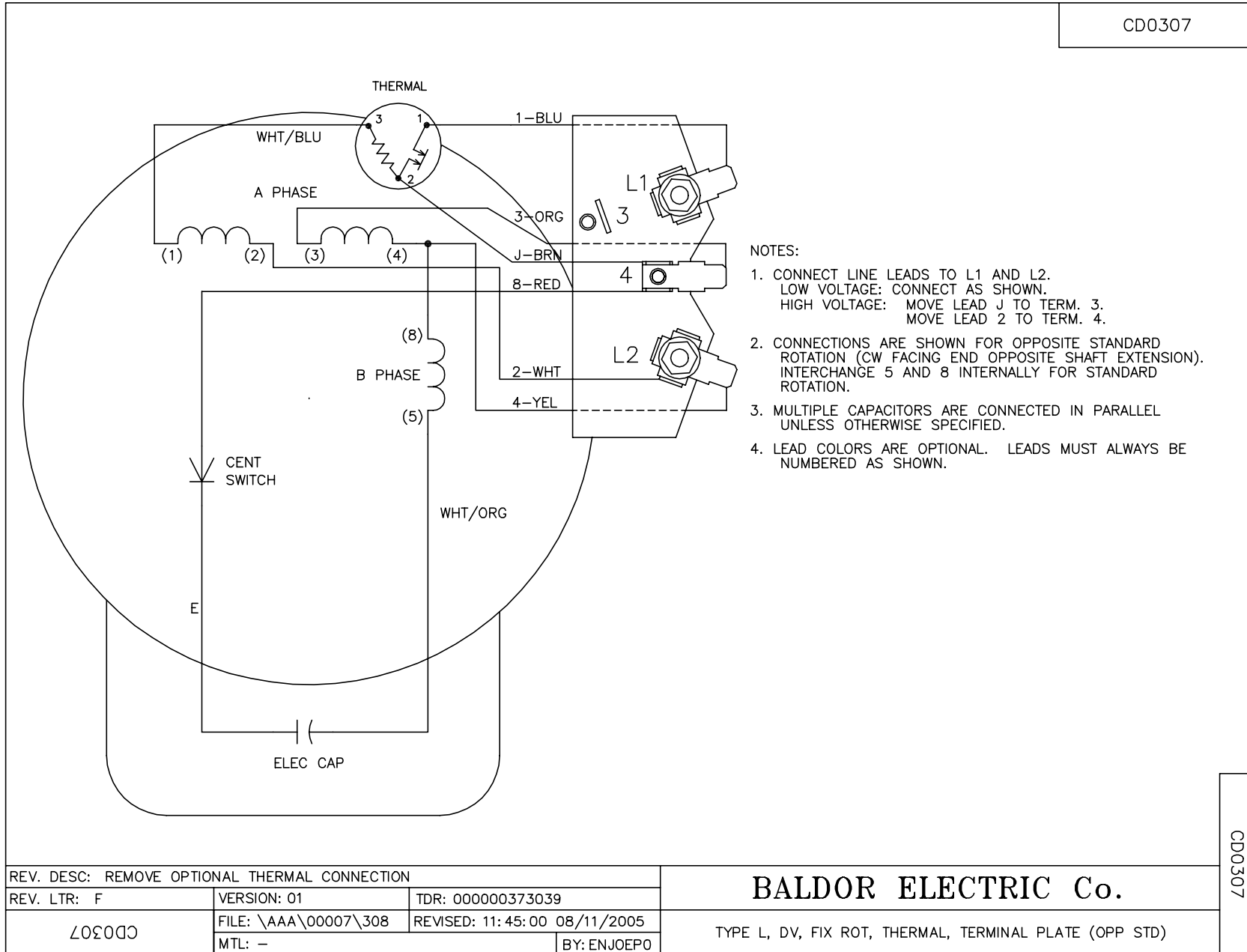
Performance Graph at 230V, 60Hz, 2.0HP Typical performance - Not guaranteed values





35E522

CD0307



CD0307