

# **BALDOR® • RELIANCE**

## **Product Information Packet**

### **JL3507A**

**.75HP, 1725RPM, 1PH, 60HZ, 56J, 3428LC, TEFC**

Copyright © All product information within this document is subject to Baldor Electric Company copyright © protection, unless otherwise noted.

Part Detail							
Revision:	P	Status:	PRD/A	Change #:		Proprietary:	No
Type:	AC	Prod. Type:	3428LC	Elec. Spec:	34WGW998	CD Diagram:	
Enclosure:	TEFC	Mfg Plant:		Mech. Spec:	34H408	Layout:	
Frame:	56J	Mounting:	F1	Poles:	04	Created Date:	
Base:	N	Rotation:	FOS	Insulation:	B	Eff. Date:	11-21-2011
Leads:	4#18,1#16 #4TH	Literature:	Y	Elec. Diagram:		Replaced By:	

Nameplate NP1257L							
CAT.NO.	JL3507A						
SPEC.	34H408W998						
HP	.75						
VOLTS	115/230						
AMP	8.2/4.1						
RPM	1725						
FRAME	56J	HZ	60	PH	1		
SER.F.	1.25	CODE	L	DES	N	CL	B
NEMA-NOM-EFF	74	PF	80				
RATING	40C AMB-CONT						
CC	USABLE AT 208V			5.4			
DE	6203	ODE	6203				
ENCL	TEFC	SN					
	SFA 9.8/4.9						

Parts List		
Part Number	Description	Quantity
SA018307	SA 34H408W998	1.000 EA
RA014454	RA 34H408W998	1.000 EA
OC3020F12SP	CYL OIL CAP 20MFD/370V	1.000 EA
EC1460A05SP	ELEC CAP, 460-552 MFD, 125V, 2.06D X 3.	1.000 EA
NS2512A01	INSULATOR, CONDUIT BOX X	1.000 EA
34CB3002A	CB CAST W/.88 DIA HOLE	1.000 EA
34GS1029A01	GASKET, CONDUIT BOX	1.000 EA
51XB1016A07	10-16 X 7/16 HXWSSLD SERTYB	2.000 EA
11XW1032G06	10-32 X .38, TAPTITE II, HEX WSHR SLTD U	1.000 EA
51XW0832A07	8-32 X .44, TAPTITE II, HEX WSHR SLTD SE	2.000 EA
34EP3102A01SP	FR ENDPLATE, MACH	1.000 EA
NS2501A02	INSULATOR, CAPACITOR BOX	1.000 EA
34CB3801	CAPACITOR BOX, DIE CAST	1.000 EA
34GS3002	GASKET, CAPACITOR BOX	1.000 EA
51XB1214A08	12-14 X 1/2HX WS SL SR TYBX	2.000 EA
HW5100A03SP	WAVY WASHER (W1543-017)	1.000 EA
34EP3300A24SP	PU ENDPLATE, MACH	1.000 EA
51XN1032A20	10-32 X 1 1/4 HX WS SL SR	2.000 EA
34FN3002A01SP	EXTERNAL FAN, PLASTIC, .637/.639 HUB W/	1.000 EA
34FH4002A03SP	IEC FH NO GREASER W/.88 DIA SHAFT HOLE	1.000 EA
51XW1032A06	10-32 X .38, TAPTITE II, HEX WSHR SLTD S	3.000 EA
WD4100A81	CAPLUG BPF-7/8, FOR .86-.88 HOLE	1.000 EA
34CB4517	CB LID 4 MTG HOLES .22 DIA STAMPED, FOR	1.000 EA
34GS1031A01	GASKET, FLAT CONDUIT BOX LID (LEXIDE)	1.000 EA

Parts List (continued)		
Part Number	Description	Quantity
51XW0832A07	8-32 X .44, TAPTITE II, HEX WSHR SLTD SE	4.000 EA
RM1010A01	35-968-1 VINYL CLS	1.000 EA
LB1009	LABEL,ROTATION DIRECTION (ON ROLLS)	1.000 EA
35GS5000A02	CAPACITOR PAD - 2"X4"	1.000 EA
34GS5003A01	FOAM SLEEVE, ID = 2 1/16" X 4 3/8"	1.000 EA
MG1000G27	PAINT- S9282E CHARCOAL GREY	0.014 GA
10XF0440S02	04-40 X 1/8 TYPE F HEX HD STAINLESS STIC	2.000 EA
SP5056A22	MODEL 34 TYPE LC STATIONARY SWITCH WITH	1.000 EA
HA3100A37	THRUBOLT 10-32 X 8.500	4.000 EA
LB5040	INSTRUCTION TAG, AC & DC	1.000 EA
LB1118	LABEL,WARNING (ROLL LABEL)	1.000 EA
LB1125C01	STD (STOCK) CARTON LABEL BALDOR WITH FLA	1.000 EA
LC0031	CONNECTION LABEL	1.000 EA
NP1257L	ALUM UL CSA CC THERMAL REV MTG	1.000 EA
34PA1005	PACKING GROUP, BALDOR	1.000 EA
PK3083T	STYROFOAM PACKING CRADLE W/TAPE	1.000 EA

Accessories		
Part Number	Description	Multiplier
34-171	C FACE KIT	A8

**Performance Data at 230V, 60Hz, 0.75HP (Typical performance - Not guaranteed values)**

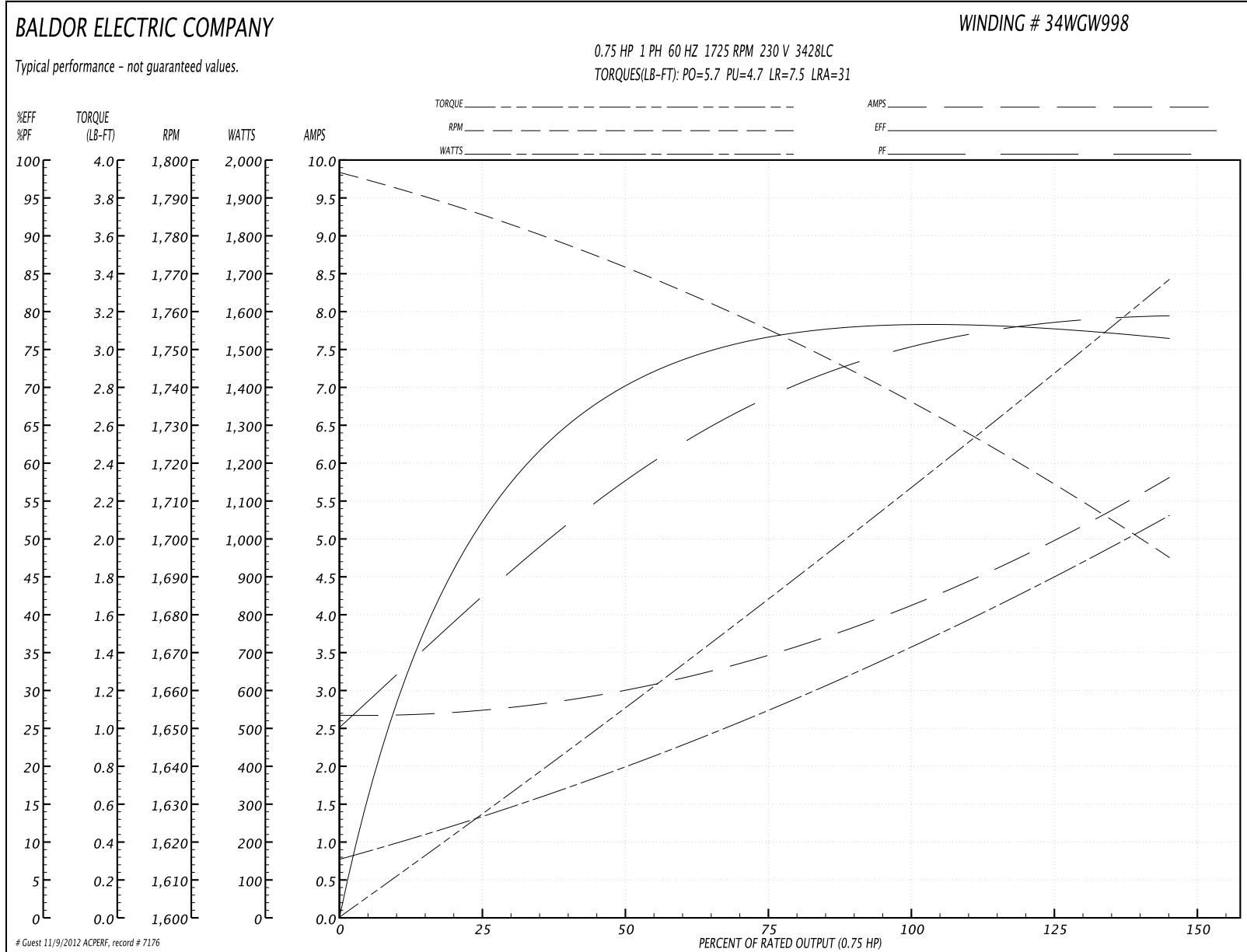
**General Characteristics**

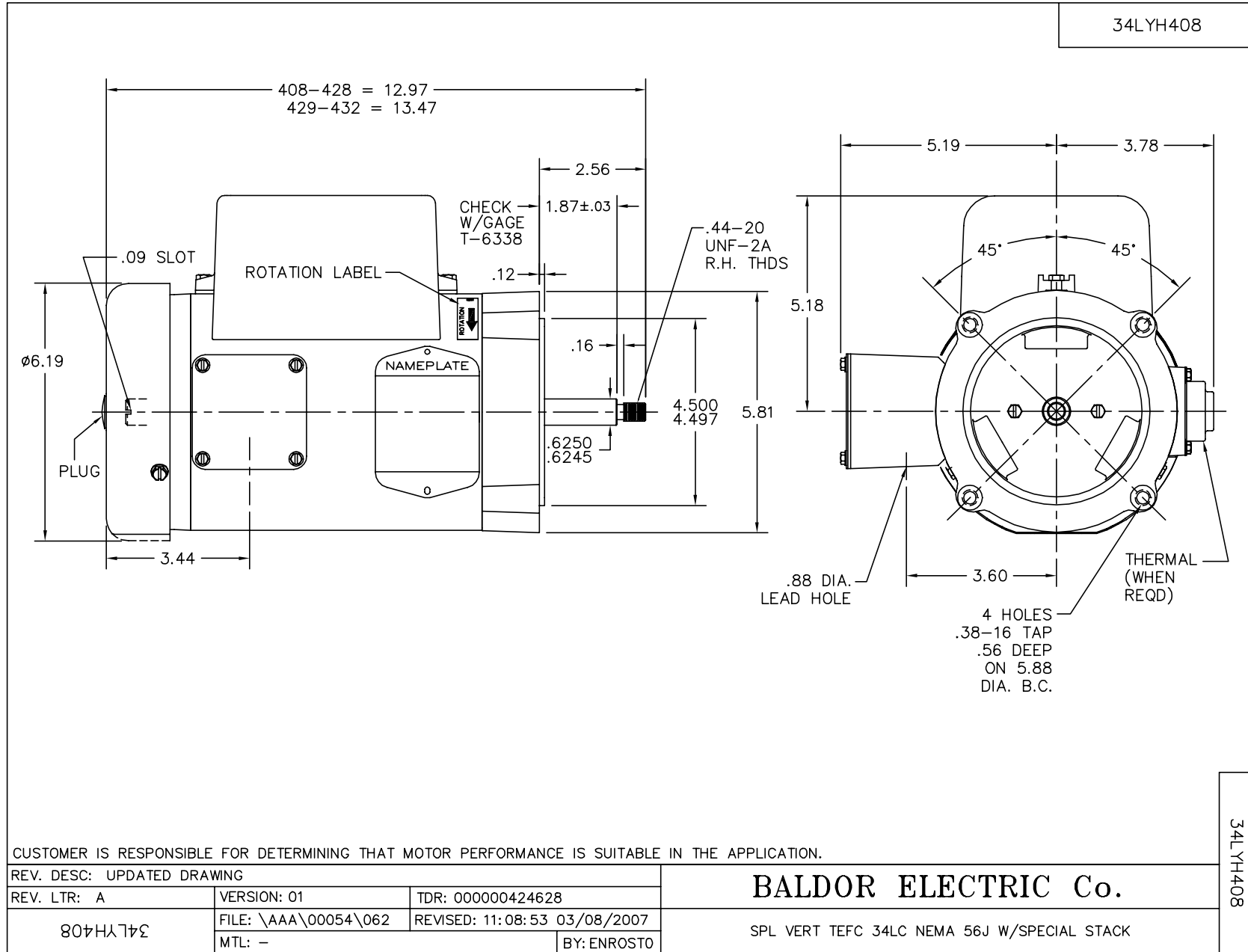
<b>Full Load Torque:</b>	2.25 LB-FT	<b>Start Configuration:</b>	DOL
<b>No-Load Current:</b>	2.7 Amps	<b>Break-Down Torque:</b>	5.7 LB-FT
<b>Line-line Res. @ 25°C.:</b>	3.11 Ohms A Ph / 1.73 Ohms B Ph	<b>Pull-Up Torque:</b>	4.7 LB-FT
<b>Temp. Rise @ Rated Load:</b>	62 C	<b>Locked-Rotor Torque:</b>	7.5 LB-FT
<b>Temp. Rise @ S.F. Load:</b>	81 C	<b>Starting Current:</b>	31.0 Amps

**Load Characteristics**

% of Rated Load	25	50	75	100	125	150	S.F.
<b>Power Factor:</b>	43.0	61.0	72.0	80.0	85.0	87.0	0.0
<b>Efficiency:</b>	53.6	67.7	73.0	73.9	93.2	71.4	0.0
<b>Speed:</b>	1784.0	1770.0	1755.0	1739.0	1717.0	1694.0	0.0
<b>Line Amperes:</b>	2.7	3.0	3.5	4.1	4.9	5.8	4.9

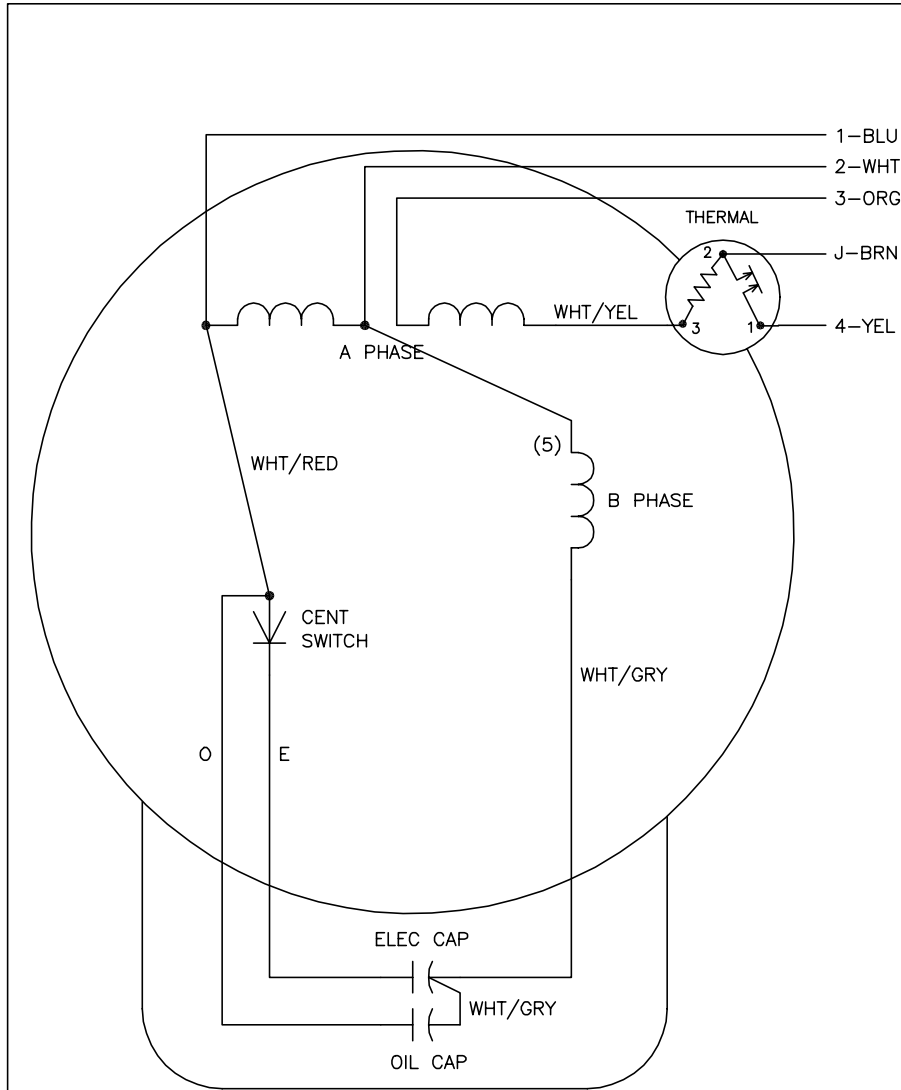
Performance Graph at 230V, 60Hz, 0.75HP Typical performance - Not guaranteed values







CD0308



	LINE A	LINE B	JOIN	JOIN
HIGH	1	4	2,3	J
LOW	1,3	4	-	2,J

NOTES:

1. CONNECTIONS ARE SHOWN FOR CCW ROTATION FACING END OPPOSITE SHAFT EXTENSION (STD). FOR CW ROTATION, INTERCHANGE 5 AND 8 INTERNALLY.
2. MULTIPLE CAPACITORS ARE CONNECTED IN PARALLEL UNLESS OTHERWISE SPECIFIED.
3. LEAD COLORS ARE OPTIONAL. LEADS MUST ALWAYS BE NUMBERED AS SHOWN.

REV. DESC: ADDED CM PLANT CODE ONLY			
REV. LTR: E	BY: TWD	REVISED: 09:39:48 10/24/2001	TDR: 253023
805000		FILE: AAA00007481	REF: CD0308
CD0308		MTL: -	

**BALDOR ELECTRIC Co.**

TYPE LC, DV, FIX, THERMAL, B PH AMPS THRU HTR, 5 LEADS

CD0308