

BALDOR® • **RELIANCE**

Product Information Packet

JL3516A

2HP, 1725RPM, 1PH, 60HZ, 56J, 3535LC, TEFC, F1

Copyright © All product information within this document is subject to Baldor Electric Company copyright © protection, unless otherwise noted.

Part Detail							
Revision:	U	Status:	PRD/A	Change #:		Proprietary:	No
Type:	AC	Prod. Type:	3535LC	Elec. Spec:	35WGT490	CD Diagram:	
Enclosure:	TEFC	Mfg Plant:		Mech. Spec:	35N778	Layout:	
Frame:	56J	Mounting:	F1	Poles:	04	Created Date:	
Base:	N	Rotation:	FOS	Insulation:	F	Eff. Date:	04-05-2012
Leads:	4#14 A&J,1#12 #4TH	Literature:	Y	Elec. Diagram:		Replaced By:	

Nameplate NP1257L							
CAT.NO.	JL3516A						
SPEC.	35N778T490G1						
HP	2						
VOLTS	115/230						
AMP	17.2/8.6						
RPM	1725						
FRAME	56J	HZ	60	PH	1		
SER.F.	1.00	CODE	J	DES	L	CL	F
NEMA-NOM-EFF	78	PF	99				
RATING	40C AMB-CONT						
CC	USABLE AT 208V						
DE	6205	ODE	6203				
ENCL	TEFC	SN					

Parts List		
Part Number	Description	Quantity
SA029024	SA 35N778T490G1	1.000 EA
RA025069	RA 35N778T490G1	1.000 EA
OC3050C09	CYL OIL CAP 50MFD/240V	1.000 EA
TPBRJ45DY	THERMAL 1PH 1.25 AUT 120C	1.000 EA
EC1540A06SP	ELEC CAP, 540-648 MFD, 125V, 2.06D X 4.	1.000 EA
NS2512A01	INSULATOR, CONDUIT BOX X	1.000 EA
35CB3007A70	35 CB .88 DIA @ 6:00, 1.25 ATO @ 3:00 (H	1.000 EA
36GS1000SP	GASKET-CONDUIT BOX, .06 THICK #SV-330 LE	1.000 EA
51XB1016A07	10-16 X 7/16 HXWSSLD SERTYB	2.000 EA
11XW1032G06	10-32 X .38, TAPTITE II, HEX WSHR SLTD U	1.000 EA
HA6015A09	THERMAL RETAINER	1.000 EA
NS2500A03	SPL THERMAL INSULATOR FOR 1.25 THERMAL	1.000 EA
51XB1214A10	12-14 X 5/8HX WS SL SR TYBX	2.000 EA
35EP3100M02	FREP TEFC 203 BRG W/O GRSR (RAISED FH MT	1.000 EA
51XW0832A07	8-32 X .44, TAPTITE II, HEX WSHR SLTD SE	2.000 EA
85XU0407S04	4X1/4 U DRIVE PIN STAINLESS	2.000 EA
35CB3801SP	CAPACITOR COVER, CAST	1.000 EA
34GS3002	GASKET, CAPACITOR BOX	1.000 EA
HA7010	CAPACITOR RETENTION CLAMP	1.000 EA
NS2501A02	INSULATOR, CAPACITOR BOX	1.000 EA
51XB1016A08	10-16X 1/2HXWSSLD SERTYB	2.000 EA
HW5100A03SP	WAVY WASHER (W1543-017)	1.000 EA
35EP3300A02SP	PU ENDPLATE, MACH	1.000 EA
51XN1032A20	10-32 X 1 1/4 HX WS SL SR	2.000 EA

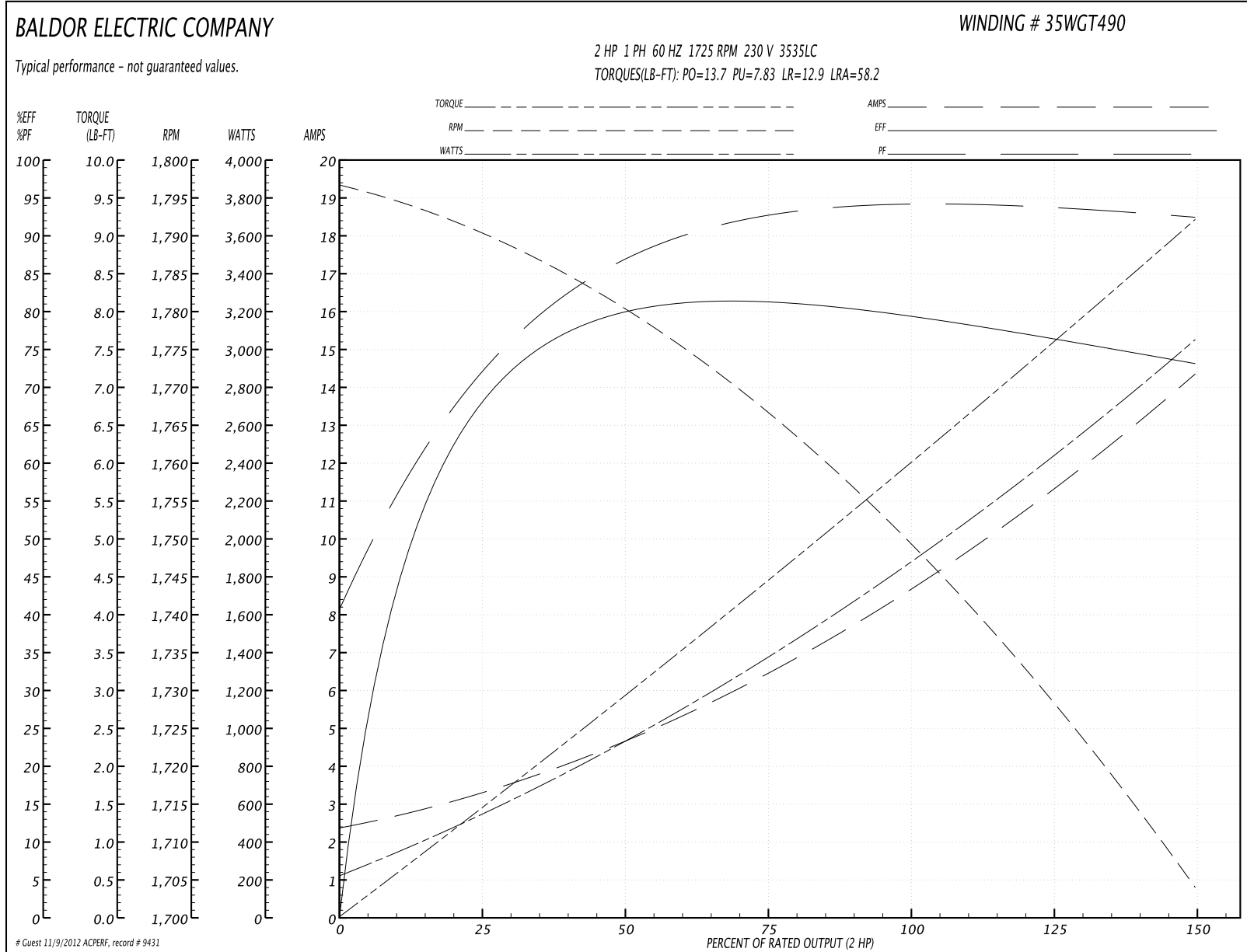
Parts List (continued)		
Part Number	Description	Quantity
51XB1214A16	12-14X1.00 HXWSSLD SERTYB	1.000 EA
35FH4005A55	IEC FH NO GRSR,3 MTG HOLE NO DIMPLES, 1.	1.000 EA
51XW1032A06	10-32 X .38, TAPTITE II, HEX WSHR SLTD S	3.000 EA
WD4100A10	465 NIAGARA PLUG (SO ELEC),FOR 1.093 DIA	1.000 EA
35CB4521GX	CONDUIT BOX LID KIT	1.000 EA
51XW0832A07	8-32 X .44, TAPTITE II, HEX WSHR SLTD SE	4.000 EA
MJ1000A75	GREASE, POLYREX EM EXXON	0.050 LB
MG1000G27	PAINT- S9282E CHARCOAL GREY	0.017 GA
35FN3002A05SP	EXFN, PLASTIC, 6.376 OD, .638 ID	1.000 EA
LB1009	LABEL,ROTATION DIRECTION (ON ROLLS)	1.000 EA
WD1000A15	3-520132-2 AMP FLAG (4M/RL NON-CANC/NON-	4.000 EA
SP5181A07	MODEL 35 LC TORQ STAT SWITCH LEAD ASSY	1.000 EA
HA3100A18	THRUBOLT 10-32 X 9.250	4.000 EA
LB1118	LABEL,WARNING (ROLL LABEL)	1.000 EA
LB1125C01	STD (STOCK) CARTON LABEL BALDOR WITH FLA	1.000 EA
LC0093	CONN LABEL, 1 PH, DUAL VOLT, FIXED ROT	1.000 EA
NP1257L	ALUM UL CSA CC THERMAL REV MTG	1.000 EA
36PA1000	PACK GROUP W/LB5001	1.000 EA
PK3082	STYROFOAM CRADLE	1.000 EA

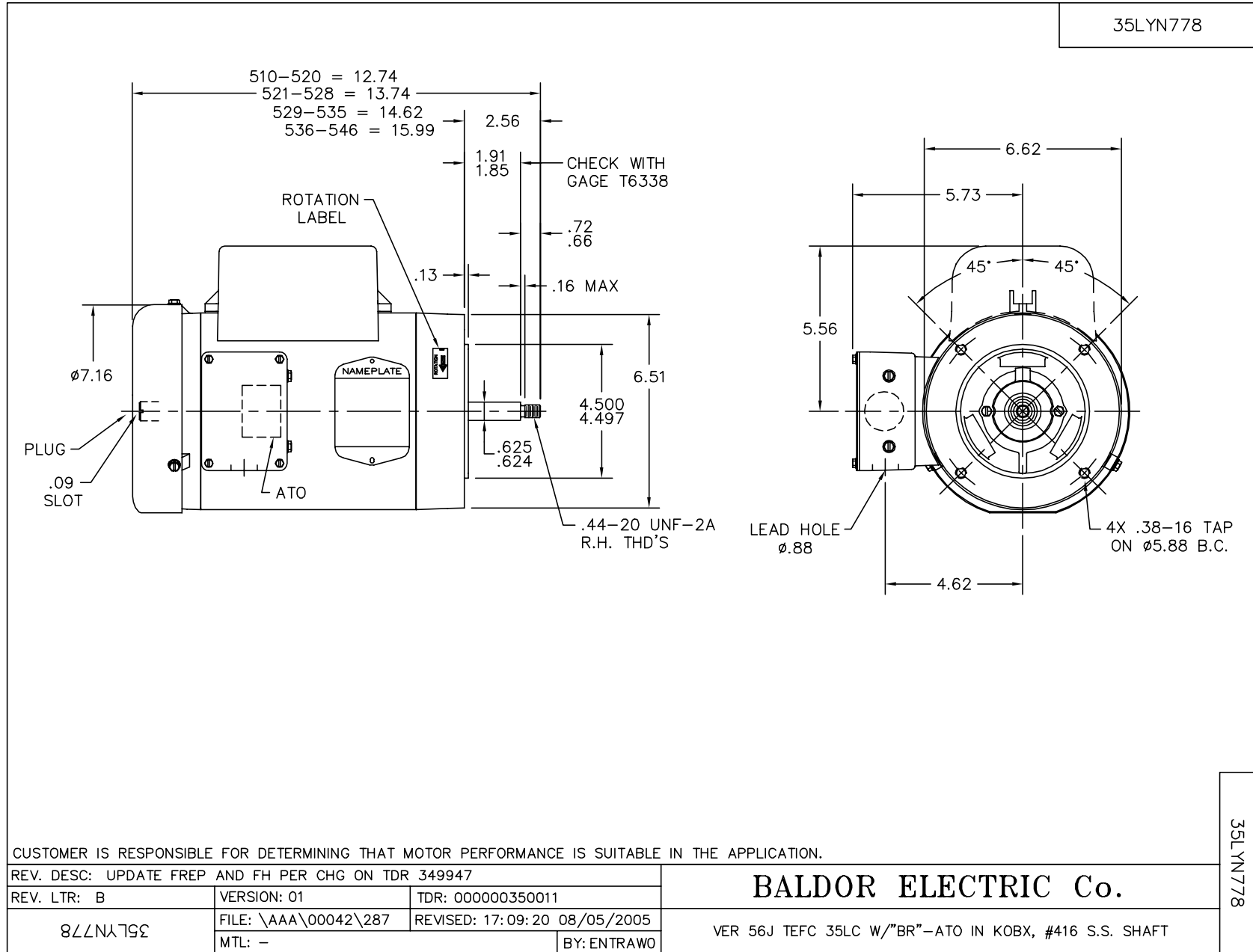
Performance Data at 230V, 60Hz, 2.0HP (Typical performance - Not guaranteed values)

General Characteristics			
Full Load Torque:	6.16 LB-FT	Start Configuration:	DOL
No-Load Current:	2.36 Amps	Break-Down Torque:	13.7 LB-FT
Line-line Res. @ 25°C.:	1.68 Ohms A Ph / 1.84 Ohms B Ph	Pull-Up Torque:	7.83 LB-FT
Temp. Rise @ Rated Load:		Locked-Rotor Torque:	12.9 LB-FT
Temp. Rise @ S.F. Load:		Starting Current:	58.2 Amps

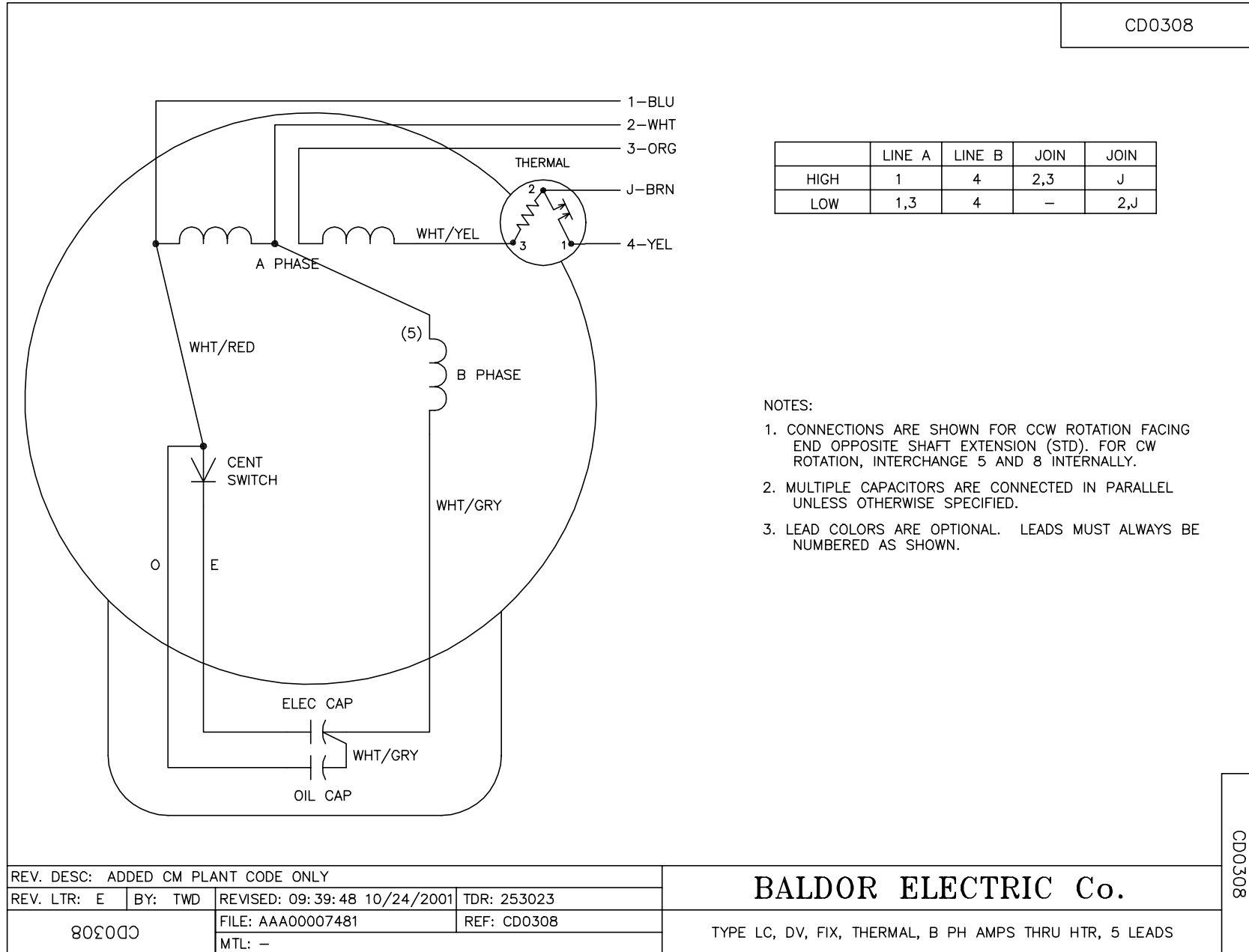
Load Characteristics							
% of Rated Load	25	50	75	100	125	150	S.F.
Power Factor:	74.0	86.0	91.0	92.0	93.0	93.0	93.0
Efficiency:	66.9	78.8	80.4	80.3	77.2	72.4	78.4
Speed:	1789.0	1778.0	1764.0	1748.0	1731.0	1701.0	1738.0
Line Amperes:	3.29	4.85	6.85	8.97	11.1	14.6	10.25

Performance Graph at 230V, 60Hz, 2.0HP Typical performance - Not guaranteed values





CD0308



	LINE A	LINE B	JOIN	JOIN
HIGH	1	4	2,3	J
LOW	1,3	4	-	2,J

NOTES:

1. CONNECTIONS ARE SHOWN FOR CCW ROTATION FACING END OPPOSITE SHAFT EXTENSION (STD). FOR CW ROTATION, INTERCHANGE 5 AND 8 INTERNALLY.
2. MULTIPLE CAPACITORS ARE CONNECTED IN PARALLEL UNLESS OTHERWISE SPECIFIED.
3. LEAD COLORS ARE OPTIONAL. LEADS MUST ALWAYS BE NUMBERED AS SHOWN.

REV. DESC: ADDED CM PLANT CODE ONLY			
REV. LTR: E	BY: TWD	REVISED: 09:39:48 10/24/2001	TDR: 253023
805000		FILE: AAA00007481	REF: CD0308
CD0308		MTL: -	

BALDOR ELECTRIC Co.

TYPE LC, DV, FIX, THERMAL, B PH AMPS THRU HTR, 5 LEADS

CD0308