

BALDOR® • ***RELIANCE***

Product Information Packet

JM7071

2HP,3450RPM,3PH,60HZ,56J,X3524M,XPFC,F1

Copyright © All product information within this document is subject to Baldor Electric Company copyright © protection, unless otherwise noted.

Part Detail							
Revision:	AK	Status:	PRD/A	Change #:		Proprietary:	No
Type:	AC	Prod. Type:	3524M	Elec. Spec:	35WG0672	CD Diagram:	
Enclosure:	XPFC	Mfg Plant:		Mech. Spec:	35E384	Layout:	
Frame:	56J	Mounting:	F1	Poles:	02	Created Date:	06-27-2007
Base:	N	Rotation:	R	Insulation:	B	Eff. Date:	10-26-2012
Leads:	9#18	Literature:		Elec. Diagram:		Replaced By:	

Nameplate NP1426XPSL

NO.		CC	
SER.			
SPEC.	35E384-672		
CAT.NO.	JM7071		
HP	2	T. CODE	T3C
VOLTS	208-230/460		
AMPS	5.7-5.4/2.7		
RPM	3450		
HZ	60	PH	3 CL B
SER.F.	1.00	DES	B CODE H
RATING	40C AMB-CONT		
FRAME	56J	NEMA-NOM-EFF	78.5
USABLE AT 208V	5.7	PF	93
BLANK			

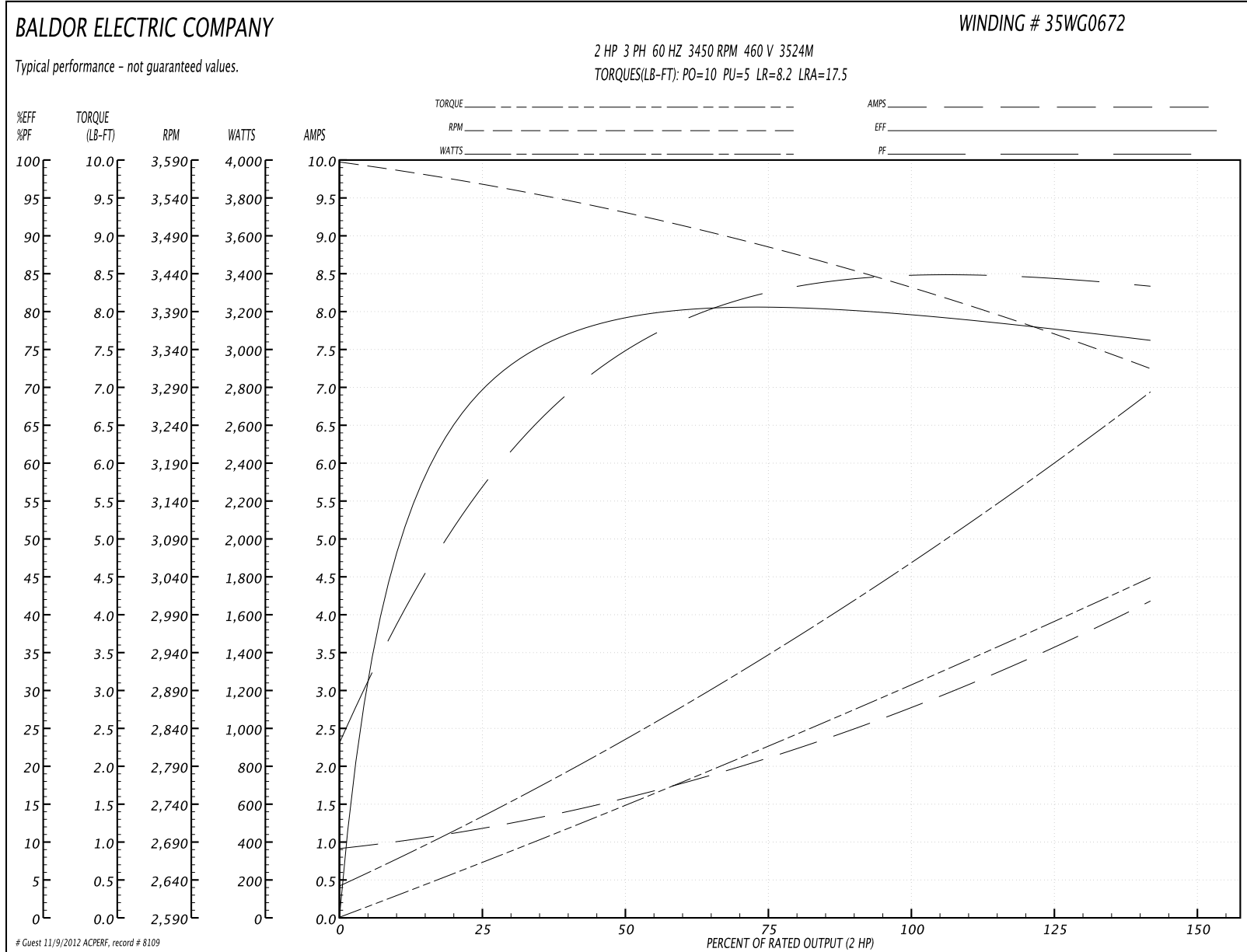
Parts List		
Part Number	Description	Quantity
SA024148	SA 35E384-672	1.000 EA
RA020198	RA 35E384-672	1.000 EA
35CB3001A01SP	EXPL CONDUIT BOX, MACH, 1/2" PIPE TAP LE	1.000 EA
11XW1032G06	10-32 X .38, TAPTITE II, HEX WSHR SLTD U	1.000 EA
HW3001B01	003SS CUP WASHER, FOR #8 SCREW	1.000 EA
35EP3700A01SP	FR ENDPLATE, XPFC	1.000 EA
HW5100A03SP	WAVY WASHER (W1543-017)	1.000 EA
35EP3702A01SP	PU EP-205 BRG-35X-56C-143-5TC	1.000 EA
51XN1032A20	10-32 X 1 1/4 HX WS SL SR	2.000 EA
HA3013A01	1/2-20X5/8 SPL.HX BOLT	2.000 EA
HW3021C06	3/32 DI X .625 PIN (F/S)	2.000 EA
XY3118A12	5/16-18 HEX NUT DIRECTIONAL SERRATION	4.000 EA
35FN3002A05SP	EXFN, PLASTIC, 6.376 OD, .638 ID	1.000 EA
51XB1214A16	12-14X1.00 HXWSSLD SERTYB	1.000 EA
35FH4005A04	IEC FH NO GRSR W/1.09 SHAFT HOLE, W/ AUT	1.000 EA
51XW1032A06	10-32 X .38, TAPTITE II, HEX WSHR SLTD S	3.000 EA
WD4100A10	465 NIAGARA PLUG (SO ELEC),FOR 1.093 DIA	1.000 EA
35CB3500A01SP	CONDUIT BOX LID, MACH	1.000 EA
51XN2520A16	SCREW, HEX WS SLT, ZN, 1/4-20 X 1.00	4.000 EA
85XU0407S04	4X1/4 U DRIVE PIN STAINLESS	6.000 EA
MJ1000A75	GREASE, POLYREX EM EXXON	0.050 LB
MG1025G29	PAINT 789.205 DARK GRAY METALLIC (USE W/	0.017 GA
MG1025Z20	ACTIVATOR WILKOFAS 060.32	0.010 GA
NP0018	NP- XP CONDUIT BOX DO NOT MAKE SELLABLE	1.000 EA

Parts List (continued)		
Part Number	Description	Quantity
HA3104A08	THRUBOLT-5/16-18X9.375 X X	4.000 EA
LB1119	WARNING LABEL	1.000 EA
LB1125C01	STD (STOCK) CARTON LABEL BALDOR WITH FLA	1.000 EA
LC0145B01	CONNECTION LABEL	1.000 EA
NP1426XPSL	SS XP UL CSA CC CL-I GP-D CL-II GP-F&G	1.000 EA
36PA1000	PACK GROUP W/LB5001	1.000 EA
PK3082	STYROFOAM CRADLE	1.000 EA

Performance Data at 460V, 60Hz, 2.0HP (Typical performance - Not guaranteed values)

General Characteristics							
Full Load Torque:	3.0 LB-FT			Start Configuration:	DOL		
No-Load Current:	0.9 Amps			Break-Down Torque:	10.0 LB-FT		
Line-line Res. @ 25°C.:	10.8 Ohms A Ph / 0.0 Ohms B Ph			Pull-Up Torque:	5.0 LB-FT		
Temp. Rise @ Rated Load:	58 C			Locked-Rotor Torque:	8.2 LB-FT		
Temp. Rise @ S.F. Load:	73 C			Starting Current:	17.5 Amps		
Load Characteristics							
% of Rated Load	25	50	75	100	125	150	S.F.
Power Factor:	66.0	80.0	87.0	90.0	91.0	92.0	91.0
Efficiency:	70.3	78.2	80.3	80.1	78.5	75.9	79.1
Speed:	3552.0	3517.0	3476.0	3432.0	3376.0	3310.0	3398.0
Line Amperes:	1.2	1.6	2.1	2.7	3.4	4.2	3.15

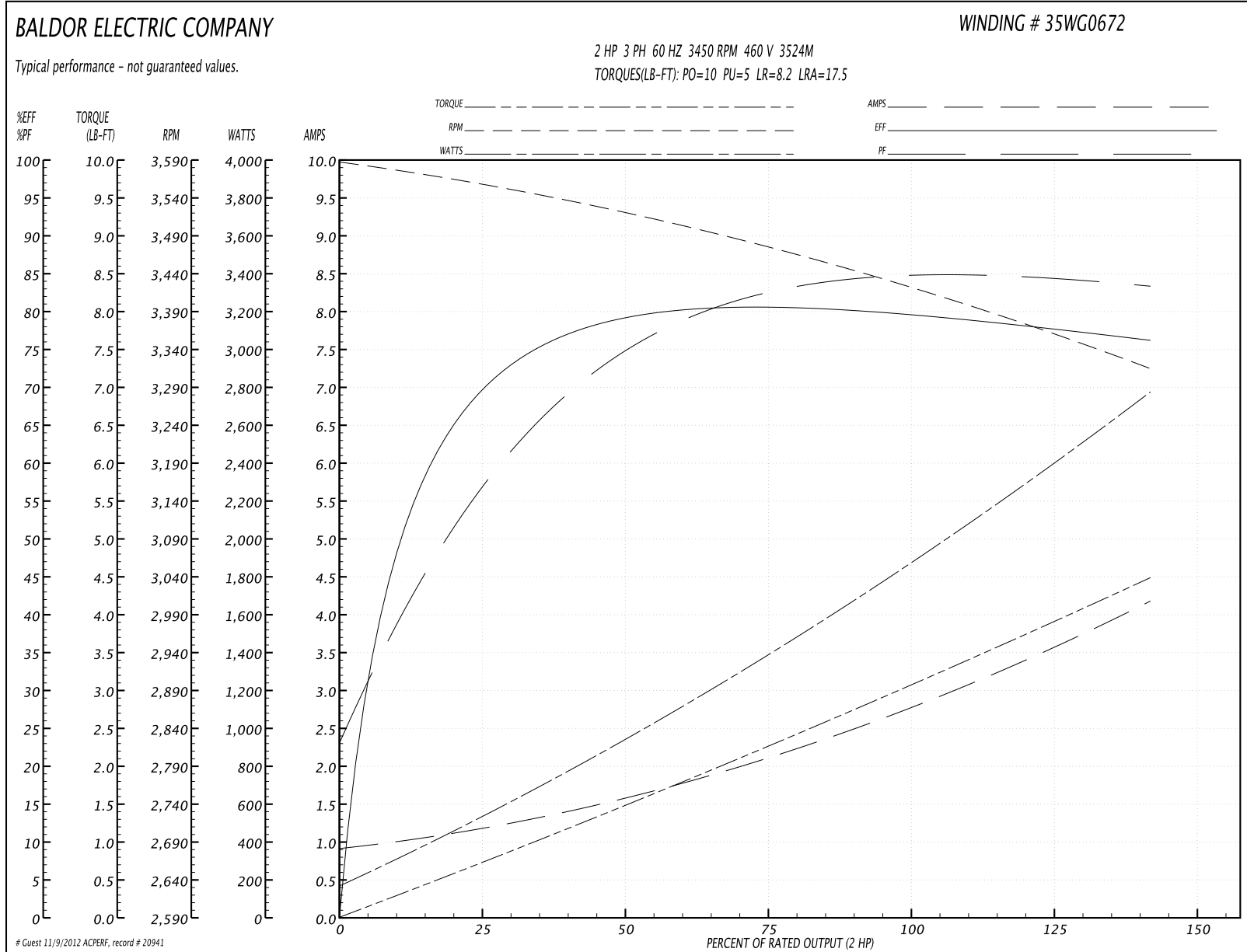
Performance Graph at 460V, 60Hz, 2.0HP Typical performance - Not guaranteed values



Performance Data at 460V, 60Hz, 2.0HP (Typical performance - Not guaranteed values)

General Characteristics							
Full Load Torque:	3.0 LB-FT			Start Configuration:	DOL		
No-Load Current:	0.9 Amps			Break-Down Torque:	10.0 LB-FT		
Line-line Res. @ 25°C.:	10.8 Ohms A Ph / 0.0 Ohms B Ph			Pull-Up Torque:	5.0 LB-FT		
Temp. Rise @ Rated Load:	58 C			Locked-Rotor Torque:	8.2 LB-FT		
Temp. Rise @ S.F. Load:	73 C			Starting Current:	17.5 Amps		
Load Characteristics							
% of Rated Load	25	50	75	100	125	150	S.F.
Power Factor:	66.0	80.0	87.0	90.0	91.0	92.0	91.0
Efficiency:	70.3	78.2	80.3	80.1	78.5	75.9	79.1
Speed:	3552.0	3517.0	3476.0	3432.0	3376.0	3310.0	3398.0
Line Amperes:	1.2	1.6	2.1	2.7	3.4	4.2	3.15

Performance Graph at 460V, 60Hz, 2.0HP Typical performance - Not guaranteed values

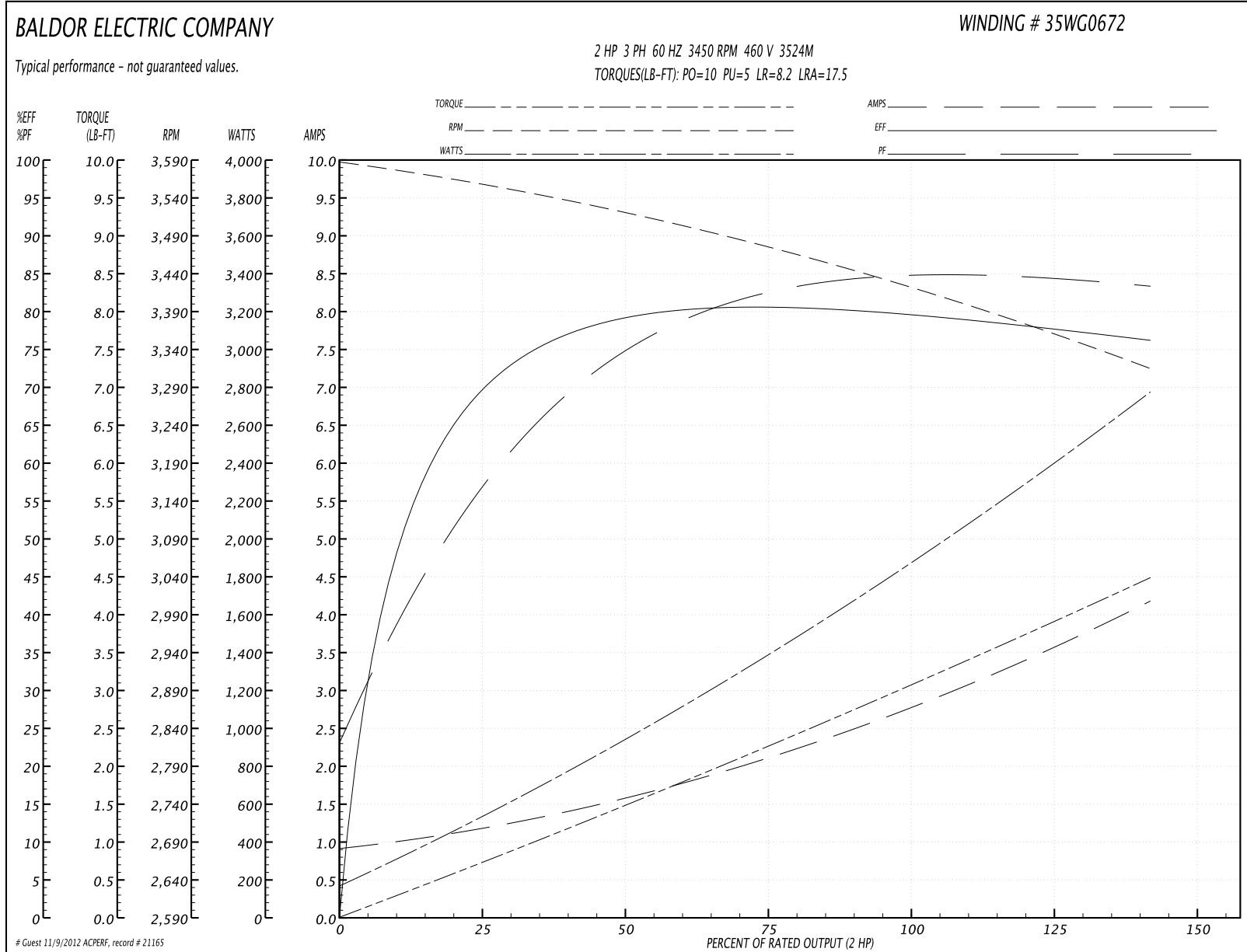


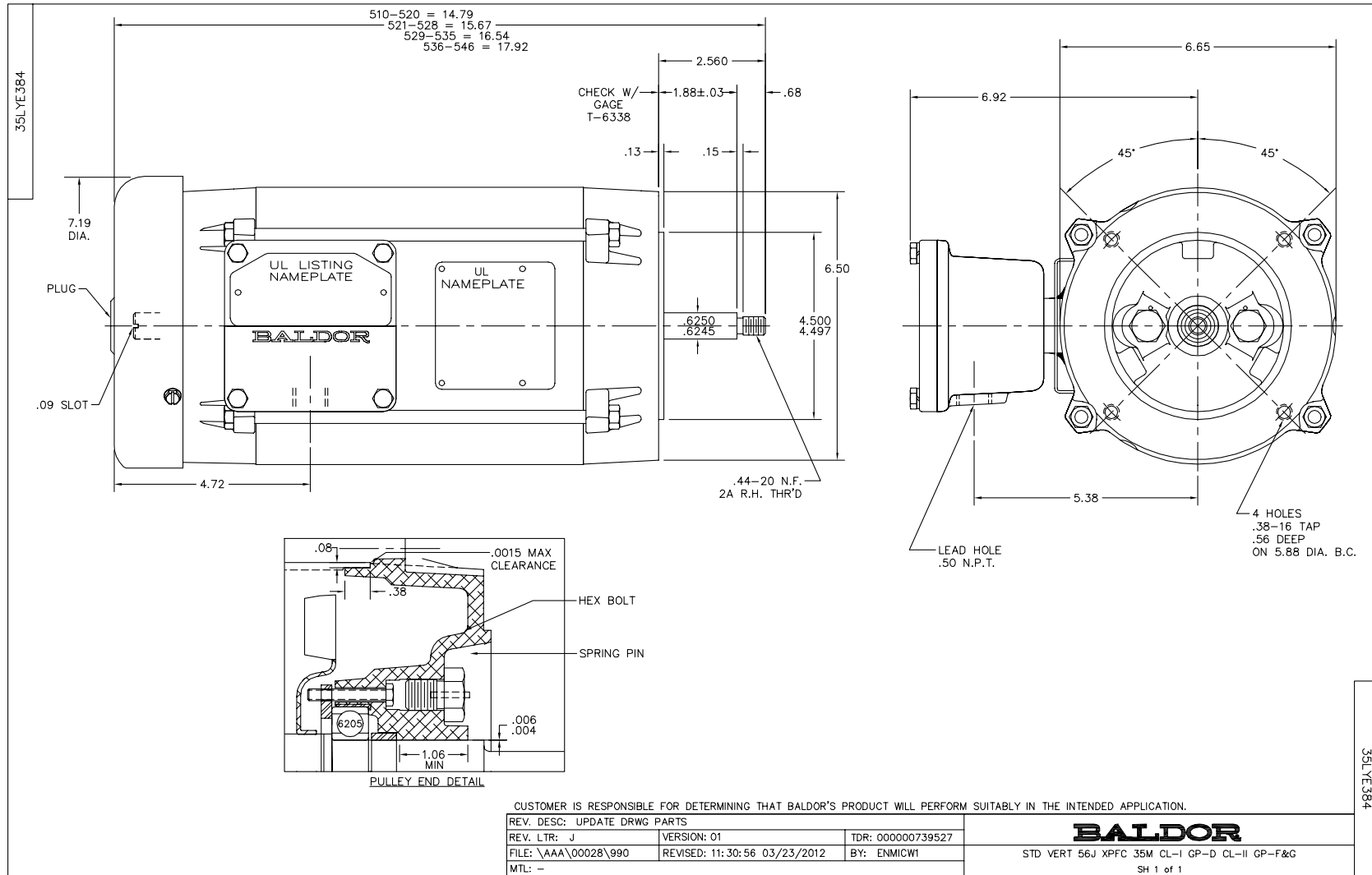
Performance Data at 460V, 60Hz, 2.0HP (Typical performance - Not guaranteed values)

General Characteristics			
Full Load Torque:	3.0 LB-FT	Start Configuration:	DOL
No-Load Current:	0.9 Amps	Break-Down Torque:	10.0 LB-FT
Line-line Res. @ 25°C.:	10.8 Ohms A Ph / 0.0 Ohms B Ph	Pull-Up Torque:	5.0 LB-FT
Temp. Rise @ Rated Load:	58 C	Locked-Rotor Torque:	8.2 LB-FT
Temp. Rise @ S.F. Load:	73 C	Starting Current:	17.5 Amps

Load Characteristics							
% of Rated Load	25	50	75	100	125	150	S.F.
Power Factor:	66.0	80.0	87.0	90.0	91.0	92.0	91.0
Efficiency:	70.3	78.2	80.3	80.1	78.5	75.9	79.1
Speed:	3552.0	3517.0	3476.0	3432.0	3376.0	3310.0	3398.0
Line Amperes:	1.2	1.6	2.1	2.7	3.4	4.2	3.15

Performance Graph at 460V, 60Hz, 2.0HP Typical performance - Not guaranteed values





CD0005

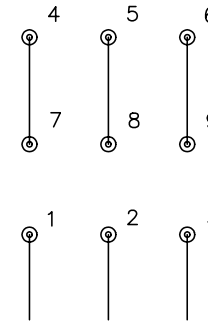


LOW VOLTAGE
(2Y)



LINE

HIGH VOLTAGE
(1Y)



LINE

NOTES:

1. INTERCHANGE ANY TWO LINE LEADS TO REVERSE ROTATION.
2. OPTIONAL THERMOSTATS ARE PROVIDED WHEN SPECIFIED.
3. ACTUAL NUMBER OF INTERNAL PARALLEL CIRCUITS MAY BE A MULTIPLE OF THOSE SHOWN ABOVE.
4. LEAD COLORS ARE OPTIONAL. LEADS MUST ALWAYS BE NUMBERED AS SHOWN.

REV. DESC: REVISE TO SHOW OPTIONAL COLORS			
REV. LTR: E	BY: JLP	REVISED: 01/19/99 10:15	TDR: 0171435
90000		FILE: AAA00005140	MDL: -
		MTL: -	

BALDOR ELECTRIC Co.

3PH, DV, 9 LEADS

CD0005