

BALDOR® • RELIANCE

Product Information Packet

JML1408T

3HP,1725RPM,1PH,60HZ,184JM,3634LC,OPEN

Copyright © All product information within this document is subject to Baldor Electric Company copyright © protection, unless otherwise noted.

| Part Detail | | | | | | | |
|-------------|---------------------|-------------|--------|----------------|----------|---------------|------------|
| Revision: | AD | Status: | PRD/A | Change #: | | Proprietary: | No |
| Type: | AC | Prod. Type: | 3634LC | Elec. Spec: | 36WG2759 | CD Diagram: | |
| Enclosure: | OPEN | Mfg Plant: | | Mech. Spec: | 36K077 | Layout: | |
| Frame: | 184JM | Mounting: | F1 | Poles: | 04 | Created Date: | |
| Base: | RG | Rotation: | R | Insulation: | B | Eff. Date: | 05-02-2012 |
| Leads: | 4#14 A PH,3#16 B PH | Literature: | | Elec. Diagram: | | Replaced By: | |

Nameplate NP1256L

| | | | | | | | |
|--------------|--------------|----------------|------|-----|---|-------|---|
| CAT.NO. | JML1408T | | | | | | |
| SPEC. | 36K77-2759 | | | | | | |
| HP | 3 | | | | | | |
| VOLTS | 115/230 | | | | | | |
| AMP | 32/16 | | | | | | |
| RPM | 1725 | | | | | | |
| FRAME | 184JM | HZ | 60 | PH | 1 | | |
| SER.F. | 1.15 | CODE | H | DES | L | CLASS | B |
| NEMA-NOM-EFF | 78 | PF | 78 | | | | |
| RATING | 40C AMB-CONT | | | | | | |
| CC | | USABLE AT 208V | 16.8 | | | | |
| DE | 6207 | ODE | 6205 | | | | |
| ENCL | OPEN | SN | | | | | |
| | | | | | | | |

| Parts List | | |
|-------------|--|----------|
| Part Number | Description | Quantity |
| SA037156 | SA 36K77-2759 | 1.000 EA |
| RA033181 | RA 36K77-2759 | 1.000 EA |
| 36CB3004 | 36 CB CASTING W/1.09 DIA LEAD HOLE @ 6:0 | 1.000 EA |
| 51XB1016A08 | 10-16X 1/2HXWSSLD SERTYB | 2.000 EA |
| 11XW1032G06 | 10-32 X .38, TAPTITE II, HEX WSHR SLTD U | 1.000 EA |
| HW3001B01 | 003SS CUP WASHER, FOR #8 SCREW | 1.000 EA |
| 36EP3200A25 | FR ENDPLATE, MACH | 1.000 EA |
| HA1103A08 | RODENT SCREEN, 36 FRAME, OPEN, FRONT END | 1.000 EA |
| 51XW1032A06 | 10-32 X .38, TAPTITE II, HEX WSHR SLTD S | 4.000 EA |
| HW1000A10 | #10 FLAT WASHER (SAE) | 4.000 EA |
| HW4500A01 | 1641B(ALEMITE)400 UNIV, GREASE FITT | 1.000 EA |
| HW4500A17 | 317400 ALEMITE GREASE RELIEF | 1.000 EA |
| SP1008A01 | BAFFLE, MODEL 36 & 37 | 1.000 EA |
| 51XW0832A07 | 8-32 X .44, TAPTITE II, HEX WSHR SLTD SE | 2.000 EA |
| 10XN2520A12 | O1/4-20X 3/4 HEX HEAD CAP | 2.000 EA |
| HW5100A05 | WVY WSHR F/205 & 304 BRGS | 1.000 EA |
| 36EP3405A05 | PUEP 182-4C OPEN 207 BRG W/BAFF. TSLV, G | 1.000 EA |
| 36AD2000 | AIR BAFFLE | 1.000 EA |
| 60XW0632A06 | 6-32 X 3/8 TORX HEAD SCREW TAPTITE II | 4.000 EA |
| HA1102A11 | SCREEN, RODENT FOR 36EP3405 | 2.000 EA |
| 51XW1032A06 | 10-32 X .38, TAPTITE II, HEX WSHR SLTD S | 4.000 EA |
| HW1000A10 | #10 FLAT WASHER (SAE) | 4.000 EA |
| HW4500A01 | 1641B(ALEMITE)400 UNIV, GREASE FITT | 1.000 EA |
| HW4500A17 | 317400 ALEMITE GREASE RELIEF | 1.000 EA |

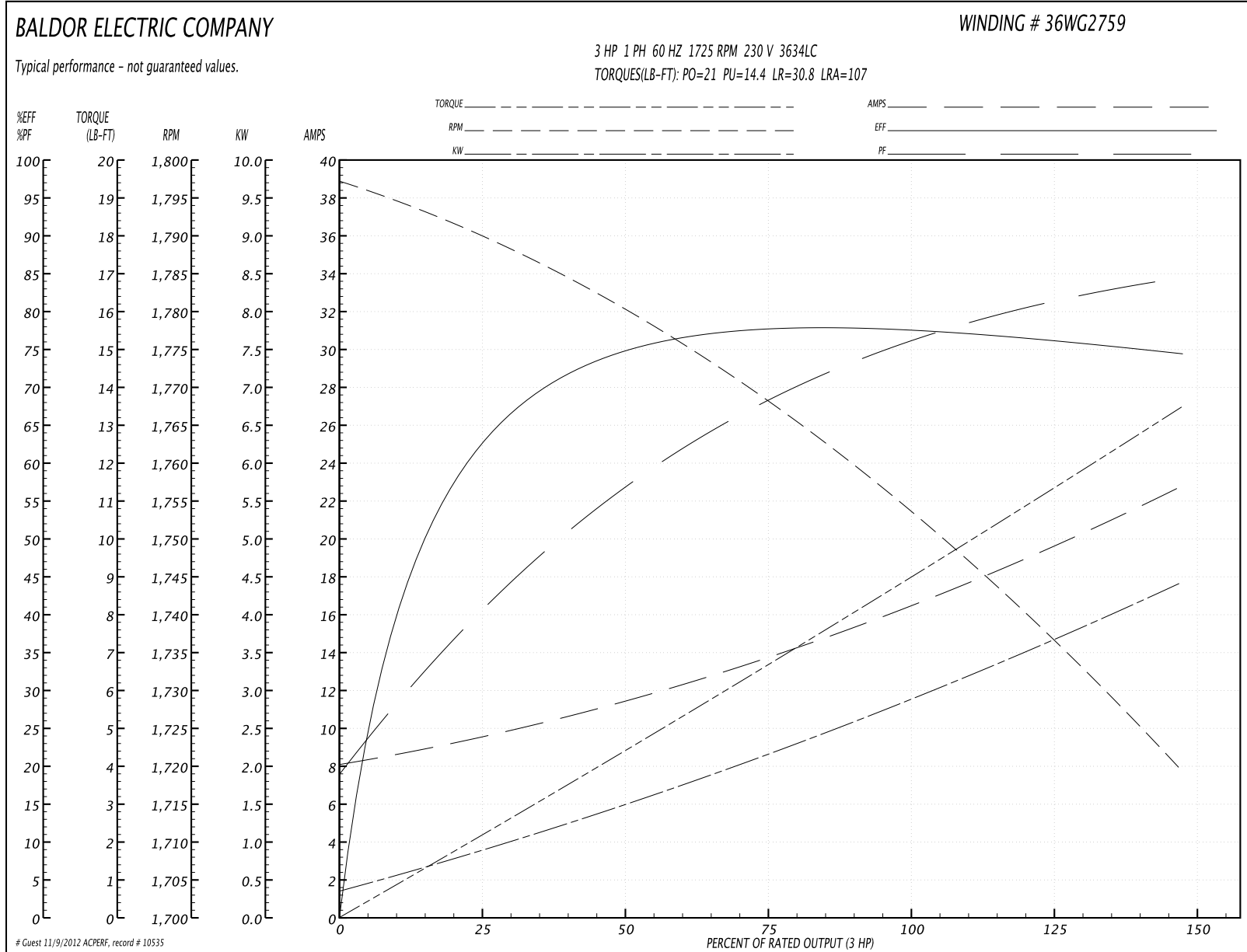
| Parts List (continued) | | |
|------------------------|--|----------|
| Part Number | Description | Quantity |
| 10XN2520A24 | 1/4-20X 1 1/2 HEX HD X | 4.000 EA |
| HW1001A25 | LOCKWASHER 1/4, ZINC PLT .493 OD, .255 I | 4.000 EA |
| 36CB4516 | 36 LIPPED CB LID | 1.000 EA |
| 51XW0832A07 | 8-32 X .44, TAPTITE II, HEX WSHR SLTD SE | 4.000 EA |
| HA1005A07SP | SLINGER, OD 2.25, ID 1.344, 307 BRG | 1.000 EA |
| HW2501D13SP | KEY, 3/16 SQ X 1.375 | 1.000 EA |
| HA7000A01 | KEY RETAINER 7/8" DIA SHAFT | 1.000 EA |
| 85XU0407S04 | 4X1/4 U DRIVE PIN STAINLESS | 2.000 EA |
| MJ1000A75 | GREASE, POLYREX EM EXXON | 0.050 LB |
| MG1000G27 | PAINT- S9282E CHARCOAL GREY | 0.022 GA |
| HA3101A25 | THRUBOLT 1/4-20 X 11.000 OHIO ROD | 4.000 EA |
| 36CB5010A01 | CAPACITOR BOX KIT, 36CB3800, OC3020F12 | 1.000 EA |
| SP5064A06 | MODEL 36 TYPE LC STAT SWITCH LEAD ASSEMB | 1.000 EA |
| LB1119 | WARNING LABEL | 1.000 EA |
| LB1125C01 | STD (STOCK) CARTON LABEL BALDOR WITH FLA | 1.000 EA |
| LC0016 | CONNECTION LABEL | 1.000 EA |
| NP1256L | ALUM UL CSA CC | 1.000 EA |
| 36PA1001 | PACKAGING GROUP | 1.000 EA |

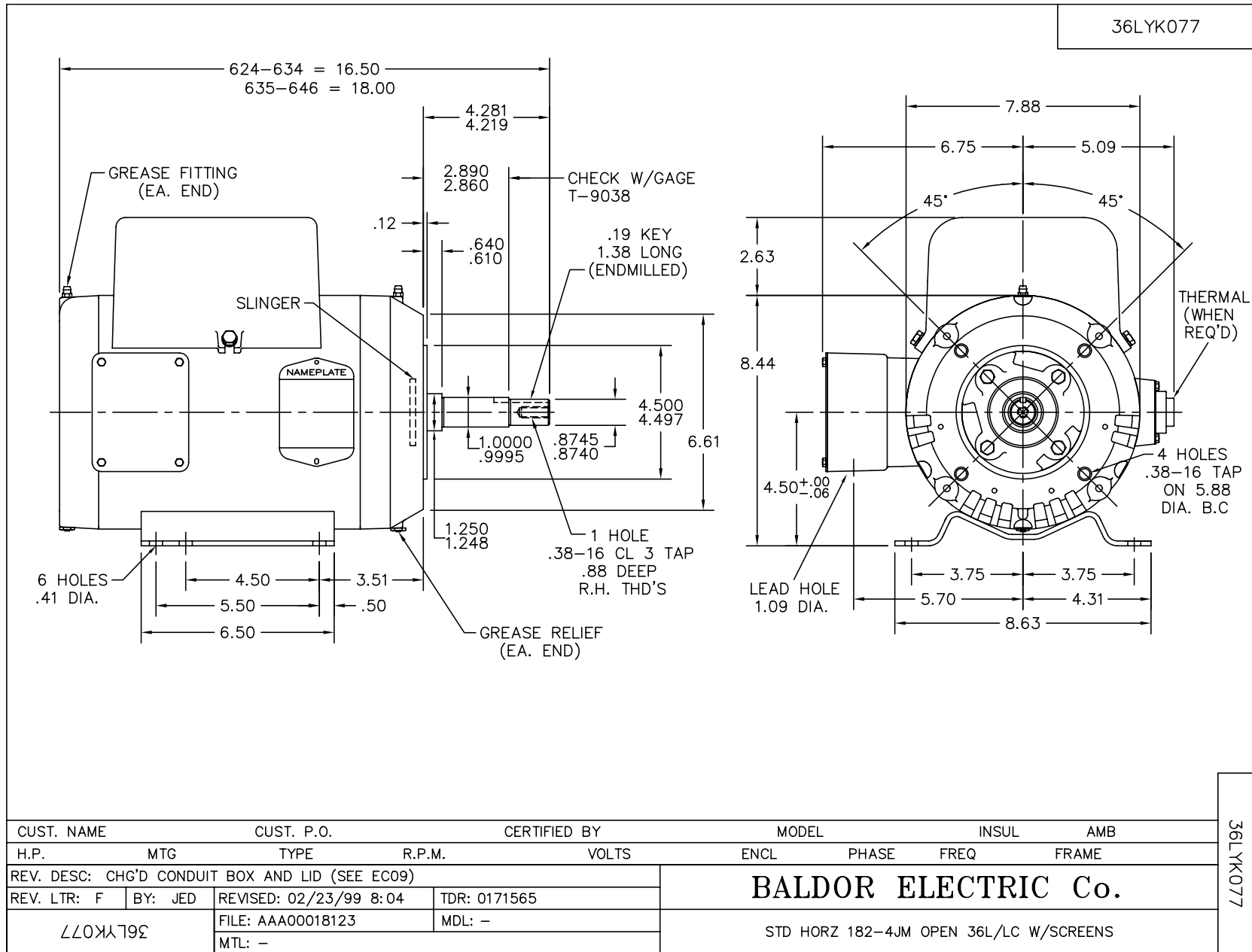
Performance Data at 230V, 60Hz, 3.0HP (Typical performance - Not guaranteed values)

| General Characteristics | | | |
|--------------------------|-----------------------------------|----------------------|------------|
| Full Load Torque: | 9.0 LB-FT | Start Configuration: | DOL |
| No-Load Current: | 8.5 Amps | Break-Down Torque: | 21.0 LB-FT |
| Line-line Res. @ 25°C.: | 4.156 Ohms A Ph / 0.586 Ohms B Ph | Pull-Up Torque: | 14.4 LB-FT |
| Temp. Rise @ Rated Load: | 57 C | Locked-Rotor Torque: | 30.8 LB-FT |
| Temp. Rise @ S.F. Load: | 72 C | Starting Current: | 107.0 Amps |

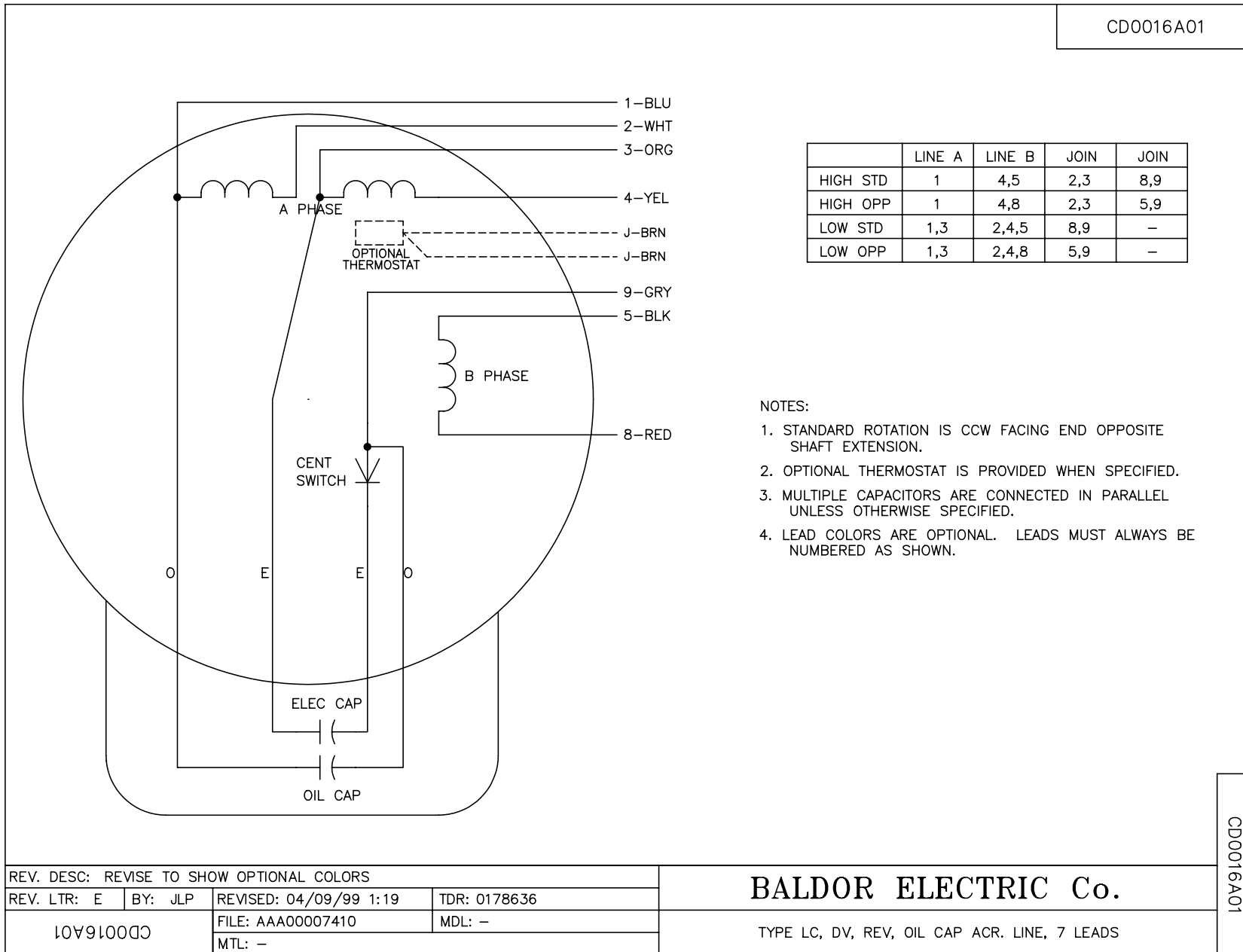
| Load Characteristics | | | | | | | |
|----------------------|--------|--------|--------|--------|--------|--------|--------|
| % of Rated Load | 25 | 50 | 75 | 100 | 125 | 150 | S.F. |
| Power Factor: | 45.0 | 64.0 | 73.0 | 79.0 | 85.0 | 83.0 | 83.0 |
| Efficiency: | 62.6 | 74.9 | 78.6 | 78.0 | 75.0 | 74.9 | 76.1 |
| Speed: | 1788.0 | 1780.0 | 1769.0 | 1756.0 | 1733.0 | 1721.0 | 1742.0 |
| Line Amperes: | 9.1 | 10.4 | 15.8 | 16.0 | 19.0 | 23.0 | 17.8 |

Performance Graph at 230V, 60Hz, 3.0HP Typical performance - Not guaranteed values





CD0016A01



| | | | |
|---|---------|------------------------|--------------|
| REV. DESC: REVISE TO SHOW OPTIONAL COLORS | | | |
| REV. LTR: E | BY: JLP | REVISED: 04/09/99 1:19 | TDR: 0178636 |
| 10V910000 | | FILE: AAA00007410 | MDL: - |
| CD0016A01 | | MTL: - | |

BALDOR ELECTRIC Co.

TYPE LC, DV, REV, OIL CAP ACR. LINE, 7 LEADS

CD0016A01