

BALDOR® • RELIANCE

Product Information Packet

JPL1508T

5HP,1725RPM,1PH,60HZ,213JP,3727L,OPSB,F1

Copyright © All product information within this document is subject to Baldor Electric Company copyright © protection, unless otherwise noted.

| Part Detail | | | | | | | |
|-------------|---------------------|-------------|-------|----------------|----------|---------------|------------|
| Revision: | G | Status: | PRD/A | Change #: | | Proprietary: | No |
| Type: | AC | Prod. Type: | 3727L | Elec. Spec: | 37WGT912 | CD Diagram: | |
| Enclosure: | OPSB | Mfg Plant: | | Mech. Spec: | 37K239 | Layout: | |
| Frame: | 213JP | Mounting: | F1 | Poles: | 04 | Created Date: | 06-23-2006 |
| Base: | RG | Rotation: | R | Insulation: | B | Eff. Date: | 01-07-2010 |
| Leads: | 2#10 A PH,2#14 B PH | Literature: | | Elec. Diagram: | | Replaced By: | |

| Nameplate NP1256L | | | | | | | | | |
|-------------------|----------------|------|------|-----|---|-------|---|--|--|
| CAT.NO. | JPL1508T | | | | | | | | |
| SPEC. | 37K239T912 | | | | | | | | |
| HP | 5 | | | | | | | | |
| VOLTS | 230 | | | | | | | | |
| AMP | 27 | | | | | | | | |
| RPM | 1725 | | | | | | | | |
| FRAME | 213JP | HZ | 60 | PH | 1 | | | | |
| SER.F. | 1.15 | CODE | G | DES | L | CLASS | B | | |
| NEMA-NOM-EFF | 77 | PF | 78 | | | | | | |
| RATING | 40C AMB-CONT | | | | | | | | |
| CC | USABLE AT 208V | | | | | | | | |
| DE | 6309 | ODE | 6206 | | | | | | |
| ENCL | OPSB | SN | | | | | | | |
| | | | | | | | | | |

| Parts List | | |
|-------------|--|----------|
| Part Number | Description | Quantity |
| SA145178 | SA 37K239T912 | 1.000 EA |
| RA134340 | RA 37K239T912 | 1.000 EA |
| EC1216C06SP | ELEC CAP, 216-259 MFD, 250V, 2.06D X 4. | 2.000 EA |
| 37CB3004 | 37 CB CASTING W/1.09 LEAD HOLE @ 6:00 | 1.000 EA |
| 51XW2520A10 | .25-20 X .62, TAPTITE II, HEX WSHR SLTD | 2.000 EA |
| 11XW1032G06 | 10-32 X .38, TAPTITE II, HEX WSHR SLTD U | 1.000 EA |
| 37EP3200A32 | FR 37L&M OPEN RODENT SCREEN W/GRS & RELI | 1.000 EA |
| HW4500A01 | 1641B(ALEMITE)400 UNIV, GREASE FITT | 1.000 EA |
| HW4500A17 | 317400 ALEMITE GREASE RELIEF | 1.000 EA |
| HA1104A01 | RODENT SCREEN 37 FRAME 206 BRG FRONT END | 1.000 EA |
| 51XW1032A06 | 10-32 X .38, TAPTITE II, HEX WSHR SLTD S | 4.000 EA |
| HW1000A10 | #10 FLAT WASHER (SAE) | 4.000 EA |
| 37AD2005 | BAFFLE PLATE, FOR OPSB 1 PHASE | 1.000 EA |
| SP1008A01 | BAFFLE, MODEL 36 & 37 | 1.000 EA |
| 13XT0832A07 | 8-32X7/16 TYP 23 PAN HD SLT DX | 2.000 EA |
| 10XN2520A10 | 1/4-20X 5/8 HEX HD X | 2.000 EA |
| HW1001A25 | LOCKWASHER 1/4, ZINC PLT .493 OD, .255 I | 2.000 EA |
| HW5100A06 | W2420-025 WVY WSHR (WB) | 1.000 EA |
| 37EP3401A06 | PUEP OPEN 309 BRG W/BAFF, SLINGER, SCREE | 1.000 EA |
| HW4500A01 | 1641B(ALEMITE)400 UNIV, GREASE FITT | 1.000 EA |
| HW4500A17 | 317400 ALEMITE GREASE RELIEF | 1.000 EA |
| HA1222 | RODENT SCREEN - 37 C-FACE MOTORS | 1.000 EA |
| 51XW1032A06 | 10-32 X .38, TAPTITE II, HEX WSHR SLTD S | 4.000 EA |
| HW1000A10 | #10 FLAT WASHER (SAE) | 4.000 EA |

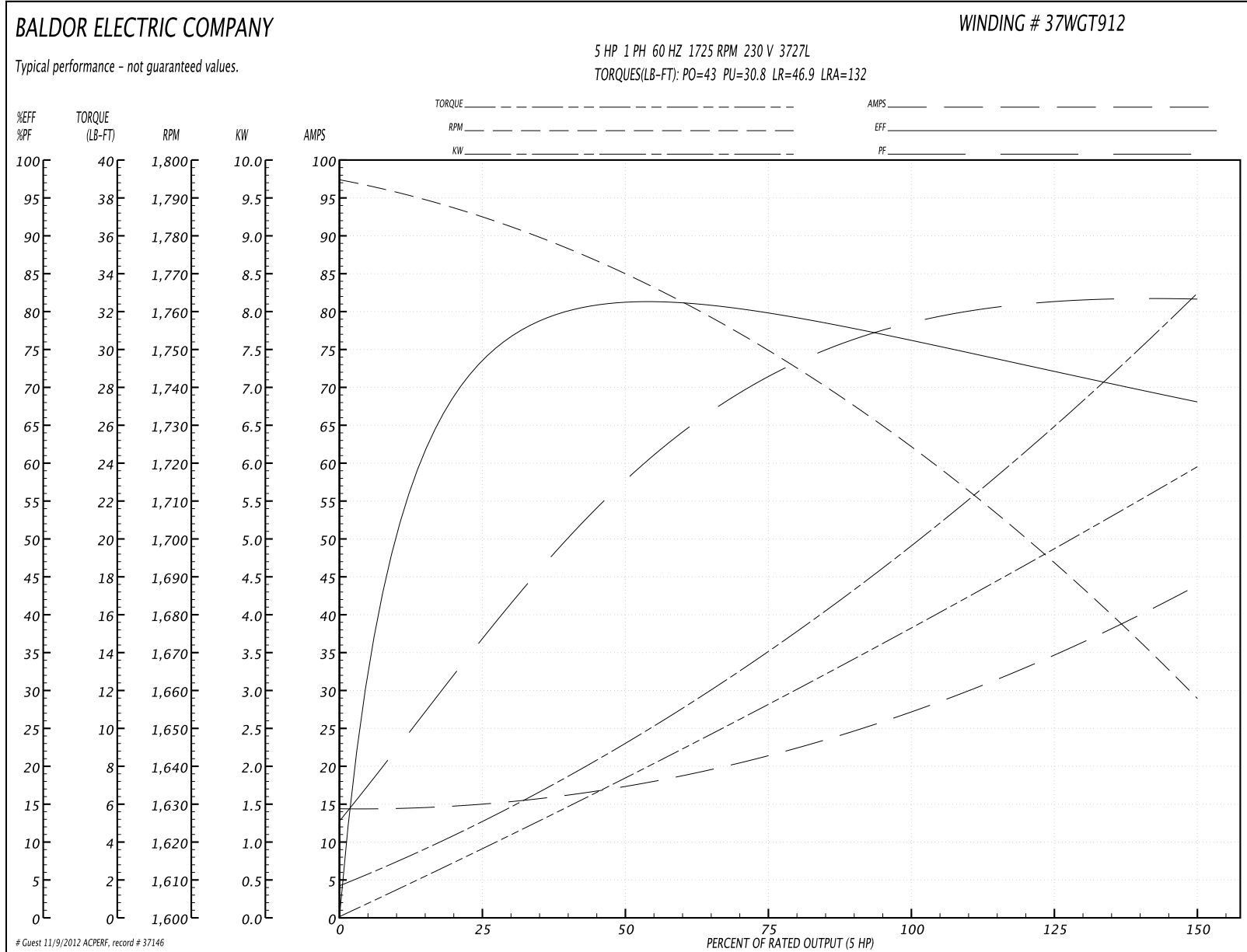
| Parts List (continued) | | |
|------------------------|--|----------|
| Part Number | Description | Quantity |
| 10XN2520A36 | 1/4-20X 2 1/4 HEX HD X | 4.000 EA |
| HW1001A25 | LOCKWASHER 1/4, ZINC PLT .493 OD, .255 I | 4.000 EA |
| XY3118A12 | 5/16-18 HEX NUT DIRECTIONAL SERRATION | 4.000 EA |
| 37CB4516 | LIPPED LID FOR 37 FRAME NEC KOBX | 1.000 EA |
| 51XW0832A07 | 8-32 X .44, TAPTITE II, HEX WSHR SLTD SE | 4.000 EA |
| HA2009A02 | SLINGER MODEL 37 PUMP MOTORS-2.75 DIA. A | 1.000 EA |
| 80XN1032A06 | 10-32 X 3/8 SET SC HEX SOCK | 1.000 EA |
| HW2501E17 | .250 SQUARE X 1.875 LONG LOW CARBON STEE | 1.000 EA |
| HA7000A02 | KEY RETAINER RING, 1 1/8 DIA, 1 3/8 DIA | 1.000 EA |
| 85XU0407S04 | 4X1/4 U DRIVE PIN STAINLESS | 2.000 EA |
| 37CB3802SP | CAPACITOR COVER, CAST | 1.000 EA |
| MJ1000A75 | GREASE, POLYREX EM EXXON | 0.050 LB |
| SP5061A13 | MODEL 37 TYPE L STAT SWITCH LEAD ASSEMBL | 1.000 EA |
| WD1000A15 | 3-520132-2 AMP FLAG (4M/RL NON-CANC/NON- | 4.000 EA |
| HA6003A38 | CLAMP, CAPACITOR | 1.000 EA |
| 51XW0832A07 | 8-32 X .44, TAPTITE II, HEX WSHR SLTD SE | 2.000 EA |
| 37AD2001A01 | BAFFLE PLATE, STAMPED | 1.000 EA |
| HA3104A14 | THRUBOLT- 5/16-18 X12.125(OHIO) | 4.000 EA |
| MG1000G27 | PAINT- S9282E CHARCOAL GREY | 0.028 GA |
| LB1119 | WARNING LABEL | 1.000 EA |
| LB1125C01 | STD (STOCK) CARTON LABEL BALDOR WITH FLA | 1.000 EA |
| LC0017 | CONN LABEL-1 PHASE-SINGLE VOLT-REV ROTNO | 1.000 EA |
| NP1256L | ALUM UL CSA CC | 1.000 EA |
| G0PA1000 | PACKAGING GROUP | 1.000 EA |

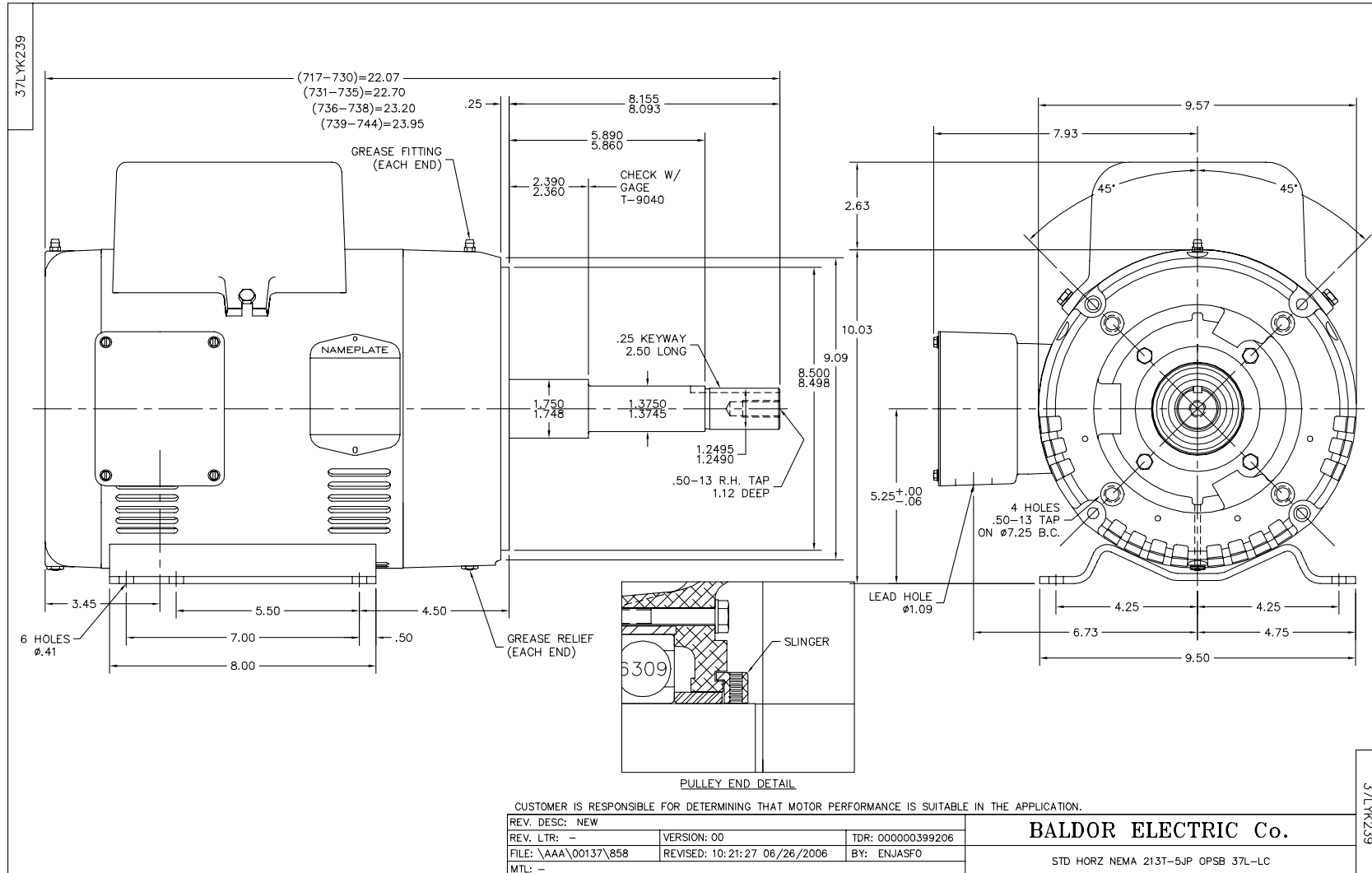
| Parts List (continued) | | |
|------------------------|------------------------------------|----------|
| Part Number | Description | Quantity |
| PK3085 | STYROFOAM SHAFT SUPPORT ZELLERBACH | 1.000 EA |

Performance Data at 230V, 60Hz, 5.0HP (Typical performance - Not guaranteed values)

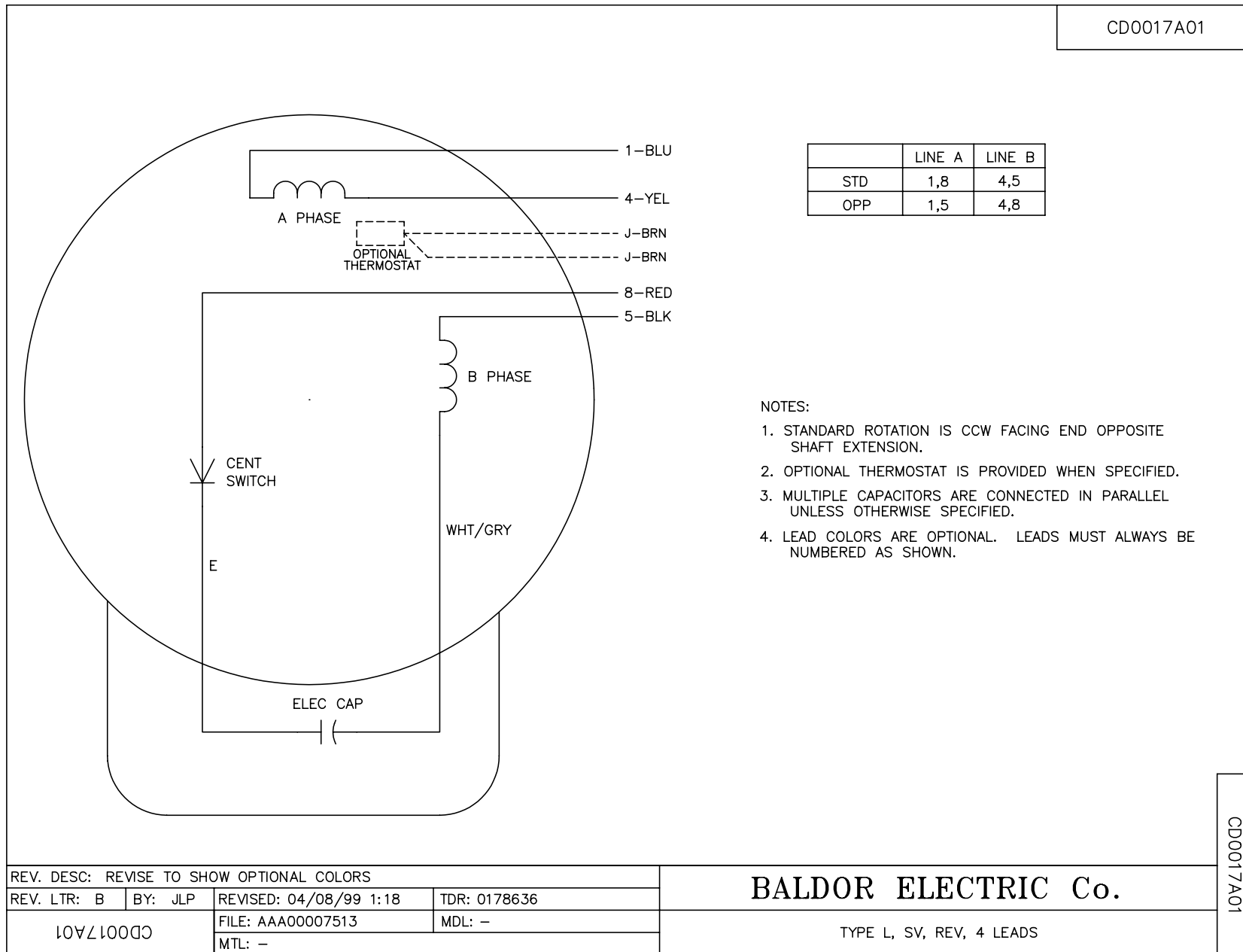
| General Characteristics | | | | | | | |
|--------------------------|----------------------------------|--------|--------|----------------------|------------|--------|--------|
| Full Load Torque: | 15.3 LB-FT | | | Start Configuration: | DOL | | |
| No-Load Current: | 14.3 Amps | | | Break-Down Torque: | 43.0 LB-FT | | |
| Line-line Res. @ 25°C.: | 0.352 Ohms A Ph / 1.48 Ohms B Ph | | | Pull-Up Torque: | 30.8 LB-FT | | |
| Temp. Rise @ Rated Load: | 68 C | | | Locked-Rotor Torque: | 46.9 LB-FT | | |
| Temp. Rise @ S.F. Load: | 81 C | | | Starting Current: | 132.0 Amps | | |
| Load Characteristics | | | | | | | |
| % of Rated Load | 25 | 50 | 75 | 100 | 125 | 150 | S.F. |
| Power Factor: | 38.0 | 58.0 | 72.0 | 78.0 | 81.0 | 82.0 | 80.0 |
| Efficiency: | 71.2 | 79.4 | 78.0 | 77.3 | 74.0 | 67.1 | 75.3 |
| Speed: | 1781.0 | 1766.0 | 1749.0 | 1728.0 | 1699.0 | 1653.0 | 1711.0 |
| Line Amperes: | 14.9 | 17.5 | 21.9 | 27.1 | 33.9 | 44.4 | 31.2 |

Performance Graph at 230V, 60Hz, 5.0HP Typical performance - Not guaranteed values





CD0017A01



CD0017A01

| | | | |
|---|---------|------------------------|--------------|
| REV. DESC: REVISE TO SHOW OPTIONAL COLORS | | | |
| REV. LTR: B | BY: JLP | REVISED: 04/08/99 1:18 | TDR: 0178636 |
| 10VZ10000 | | FILE: AAA00007513 | MDL: - |
| CD0017A01 | | MTL: - | |

BALDOR ELECTRIC Co.

TYPE L, SV, REV, 4 LEADS