

BALDOR® • RELIANCE

Product Information Packet

JSL425A

.75HP,3450RPM,1PH,60HZ,56Y,1720L,OPEN,F1

Copyright © All product information within this document is subject to Baldor Electric Company copyright © protection, unless otherwise noted.

Part Detail							
Revision:	M	Status:	PRD/A	Change #:		Proprietary:	No
Type:	AC	Prod. Type:	1720L	Elec. Spec:	17WGX128	CD Diagram:	
Enclosure:	OPEN	Mfg Plant:		Mech. Spec:	17E801	Layout:	
Frame:	56Y	Mounting:	F1	Poles:	02	Created Date:	03-20-2007
Base:	N	Rotation:	FOS	Insulation:	B	Eff. Date:	04-29-2011
Leads:	5#18,1#14 #1TH	Literature:		Elec. Diagram:		Replaced By:	

Nameplate NP1203A02							
CAT.NO.	JSL425A	ENCL	OPEN				
SPEC.	17E801X128	FRAME	56Y				
HP	.75						
VOLTS	115/230						
AMPS	10.2/5.1						
RPM	3450						
HZ	60	PH	1	CL	B		
SER.F.	1.50	DES	N	CODE	K		
FL EFF	64	PF	75				
RATING	40C AMB-CONT						
SF AMP	13.2/6.6	USABLE AT 208V	6				
SER.							
MANUAL	N	AUTO	Y	NONE	N		

Parts List		
Part Number	Description	Quantity
SA154983	SA 17E801X128	1.000 EA
RA143642	RA 17E801X128	1.000 EA
TPMRJ28AX	THERMAL 1PH 0.75 AUT 120C	1.000 EA
EC4189A01	ELEC CAP, 189-227 MFD, 125V, 1.48D X 2.	1.000 EA
TB0167B03	6 POS LONG FOOT 500 SERIES (22-17 AWG) M	1.000 EA
WD1540A02	TERMINAL, 187 SERIES 500 SERIES MAG-MATE	4.000 EA
WD1540A01	TERMINAL, 187 SERIES 500 SERIES MAG-MATE	2.000 EA
WD1000B16	KPA-4C BURNDY TERMINAL	1.000 EA
51XB1016A05	10-16X5/16HX WA SL SR TYB (F/S)	1.000 EA
WD4100A49	CAPLUG,BP-13/16,PLUG W/RECESSED HEAD	1.000 EA
11XT0832G06	8-32 X 3/8 TY 23 TAPPING	1.000 EA
51XW0832A07	8-32 X .44, TAPTITE II, HEX WSHR SLTD SE	4.000 EA
HA1005A05SP	SLINGER, OD 1.50, ID .659, 203 BRG	1.000 EA
WD4100A04	62MP0687 HOLE PLUG OR DP-687 HEYCO	1.000 EA
33CB4800A02	CAPACITOR COVER, STAMPED	1.000 EA
34GS5003	FOAM SLEEVE, ID = 2 1/16" X 3 3/8"	1.000 EA
51XB1016A05	10-16X5/16HX WA SL SR TYB (F/S)	2.000 EA
HW5100A03SP	WAVY WASHER (W1543-017)	1.000 EA
34EP3501A05E	ENDPLATE, MACH POOL PUMP 17 FRAME	1.000 EA
34AD2007	BAFFLE PLATE INJECTION MOLD	1.000 EA
51XT0632A06	6-32X3/8 TY23 HXWS SLDSR	4.000 EA
51XN1032A16	10-32 X 1.000 HX WS SL SR	2.000 EA
34CB4501SP	TERMINAL BOX LID, STAMPED X (PLATED)	1.000 EA
51XW0832A07	8-32 X .44, TAPTITE II, HEX WSHR SLTD SE	2.000 EA

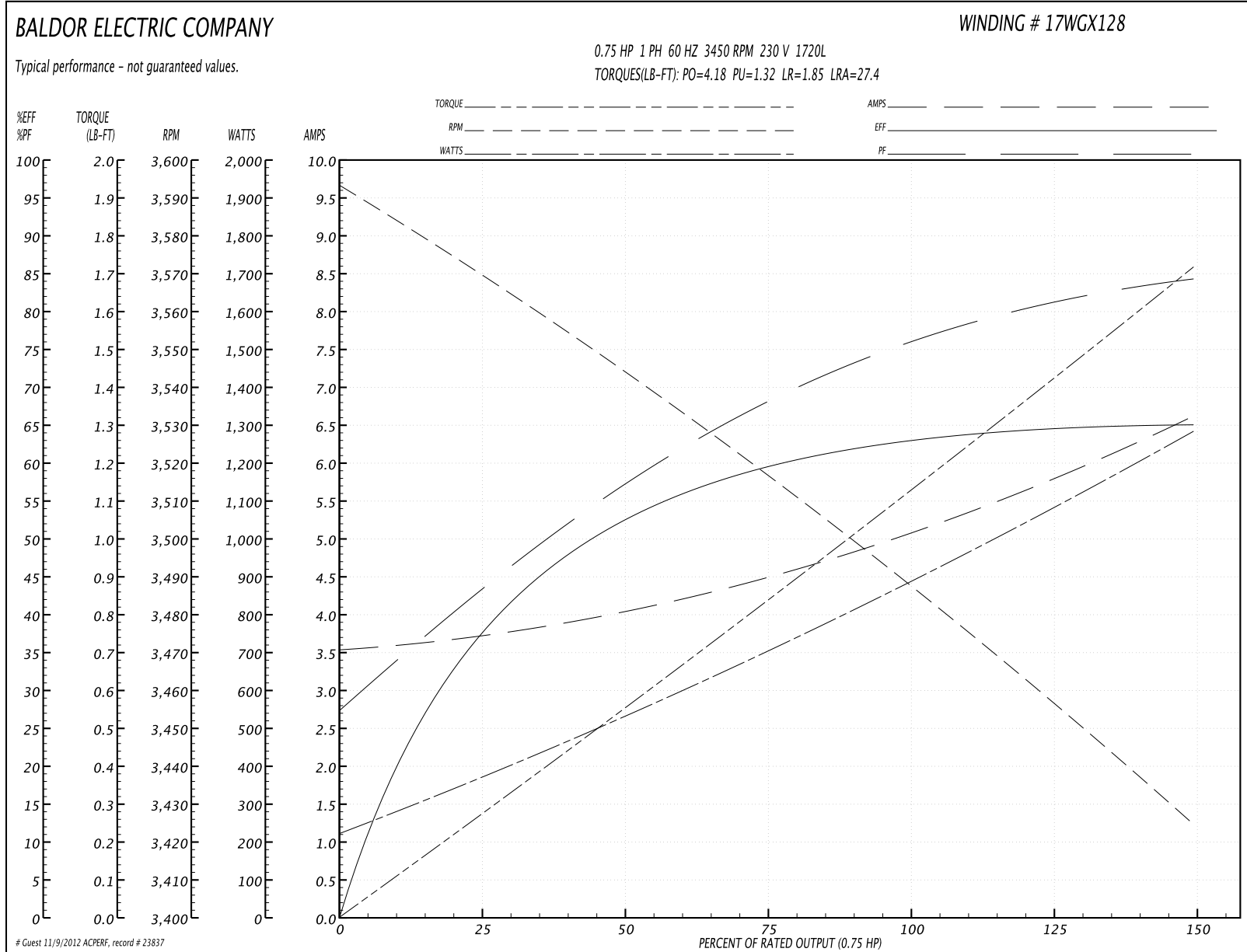
Parts List (continued)		
Part Number	Description	Quantity
RM1010A13	VINYL CAP .562-16 701-89 BLACK	1.000 EA
LB1009	LABEL,ROTATION DIRECTION (ON ROLLS)	1.000 EA
17EP3200BT07	FR ENDPLATE, MACH	1.000 EA
SP5111A09	17L TERM PANEL SWITCH W/TABS &.75" THRM	1.000 EA
HA3100A19	THRUBOLT 10-32 X 9.625	4.000 EA
LB1171	LABEL CARTON 6X6 ON LINE BLANK ROLLS	1.000 EA
NP1203A02	NP LABEL 1PH, DV, FIX (FOR COMMERCIAL MO	1.000 EA
34PA1005	PACKING GROUP, BALDOR	1.000 EA
PK3082	STYROFOAM CRADLE	1.000 EA
LB5040	INSTRUCTION TAG, AC & DC	1.000 EA
LD5309A01	LEAD ASSY, ML14-8C16 5" W/(2) WD1000A15	1.000 EA
LD5000A101	LEAD ASSY, 16 GA, BLACK, E, W/FLAGS	1.000 EA
LD5000A352	LD ASSY, ML14-JH16, 6.5", W/(1)WD1000A15	1.000 EA
LD5000A353	LD ASSY, ML1400AE16, 5", FLAG, .2" STRIP	1.000 EA
LD5324A01	LD ASSY, ML14-1E14, 6", W/(1) WD1000A15	1.000 EA
LD53239	LEAD ASSY. MAG MATE (FOR FOS ROTATION)	1.000 EA

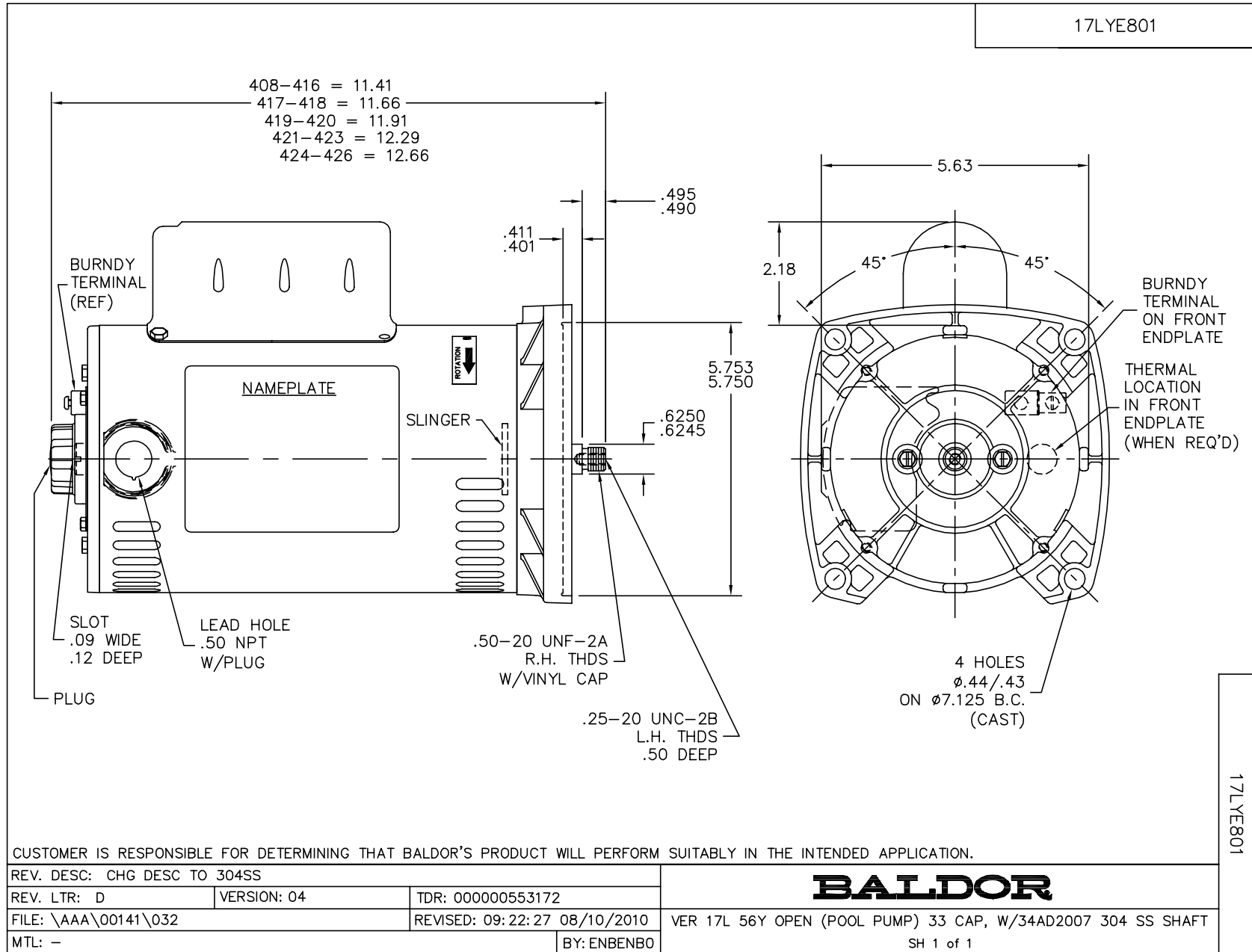
Performance Data at 230V, 60Hz, 0.75HP (Typical performance - Not guaranteed values)

General Characteristics			
Full Load Torque:	1.15 LB-FT	Start Configuration:	DOL
No-Load Current:	3.51 Amps	Break-Down Torque:	4.18 LB-FT
Line-line Res. @ 25°C.:	2.68 Ohms A Ph / 3.16 Ohms B Ph	Pull-Up Torque:	1.32 LB-FT
Temp. Rise @ Rated Load:	37 C	Locked-Rotor Torque:	1.85 LB-FT
Temp. Rise @ S.F. Load:	54 C	Starting Current:	27.4 Amps

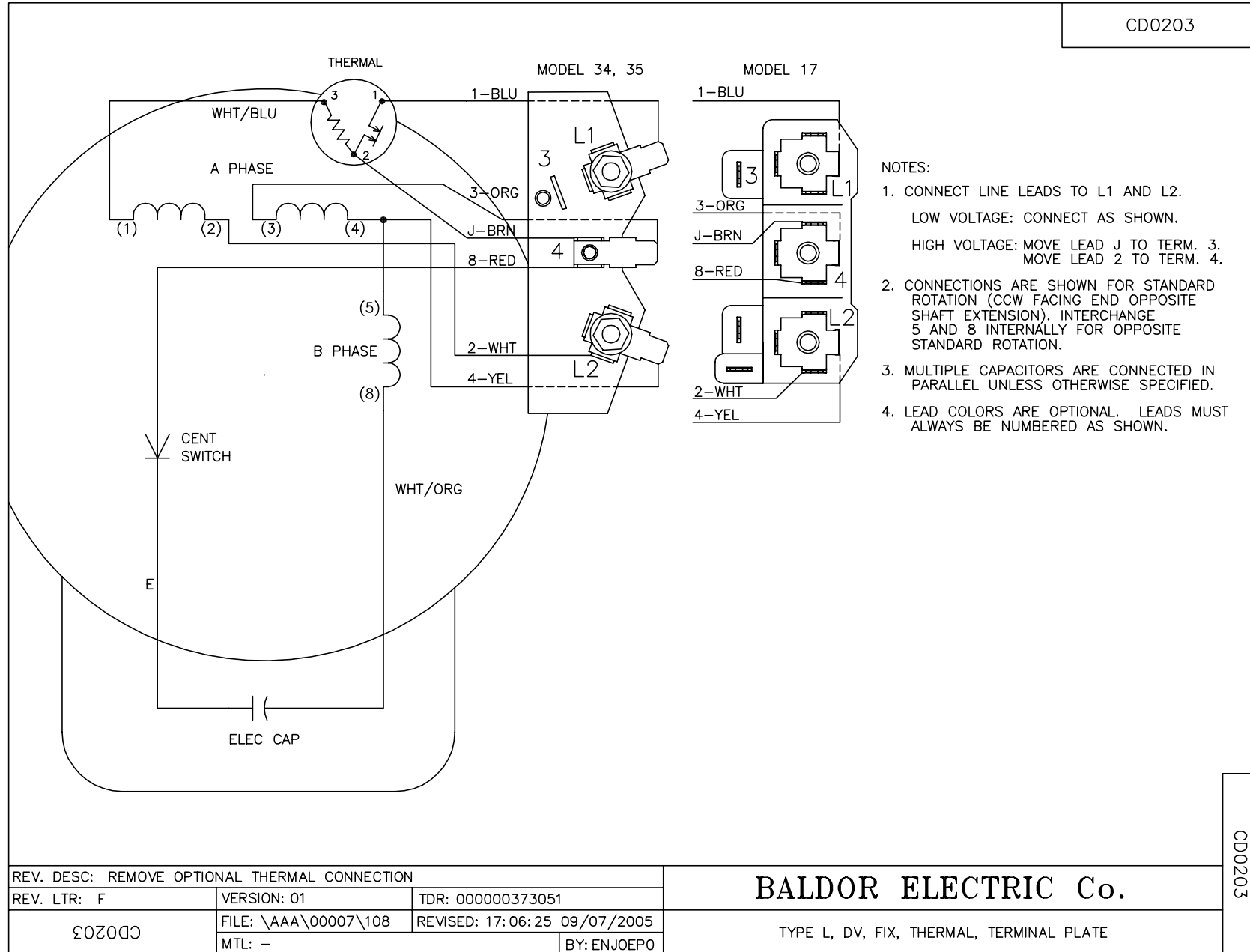
Load Characteristics							
% of Rated Load	25	50	75	100	125	150	S.F.
Power Factor:	46.0	59.0	68.0	75.0	82.0	85.0	85.0
Efficiency:	36.5	51.9	60.1	64.2	65.3	64.4	64.4
Speed:	3561.0	3540.0	3516.0	3490.0	3454.0	3420.0	3420.0
Line Amperes:	3.76	4.08	4.54	5.1	5.91	6.66	6.66

Performance Graph at 230V, 60Hz, 0.75HP Typical performance - Not guaranteed values





CD0203



CD0203

REV. DESC: REMOVE OPTIONAL THERMAL CONNECTION		
REV. LTR: F	VERSION: 01	TDR: 000000373051
CD0203	FILE: \AAA\00007\108	REVISED: 17:06:25 09/07/2005
	MTL: -	BY: ENJOEPO

BALDOR ELECTRIC Co.

TYPE L, DV, FIX, THERMAL, TERMINAL PLATE