

BALDOR® • **RELIANCE**

Product Information Packet

JSM3120

1.5HP,3450RPM,3PH,60HZ,56YZ,3424M,OPEN,F

Copyright © All product information within this document is subject to Baldor Electric Company copyright © protection, unless otherwise noted.

| Part Detail | | | | | | | |
|-------------|------|-------------|-------|----------------|----------|---------------|------------|
| Revision: | D | Status: | PRD/A | Change #: | | Proprietary: | No |
| Type: | AC | Prod. Type: | 3424M | Elec. Spec: | 34WGX480 | CD Diagram: | |
| Enclosure: | OPEN | Mfg Plant: | | Mech. Spec: | 34L408 | Layout: | |
| Frame: | 56YZ | Mounting: | F1 | Poles: | 02 | Created Date: | 08-05-2009 |
| Base: | N | Rotation: | R | Insulation: | B | Eff. Date: | 08-26-2011 |
| Leads: | 9#18 | Literature: | | Elec. Diagram: | | Replaced By: | |

| Nameplate NP1256L | | | | | | | | | |
|-------------------|--------------|------|------|----------------|-----|-------|---|--|--|
| CAT.NO. | JSM3120 | | | | | | | | |
| SPEC. | 34L408X480G1 | | | | | | | | |
| HP | 1.5 | | | | | | | | |
| VOLTS | 230/460 | | | | | | | | |
| AMP | 4/2 | | | | | | | | |
| RPM | 3450 | | | | | | | | |
| FRAME | 56YZ | HZ | 60 | PH | 3 | | | | |
| SER.F. | 1.15 | CODE | L | DES | B | CLASS | B | | |
| NEMA-NOM-EFF | 81.5 | PF | 89 | | | | | | |
| RATING | 40C AMB-CONT | | | | | | | | |
| CC | | | | USABLE AT 208V | 4.7 | | | | |
| DE | 6203 | ODE | 6203 | | | | | | |
| ENCL | OPEN | SN | | | | | | | |
| | SFA 4.4/2.2 | | | | | | | | |

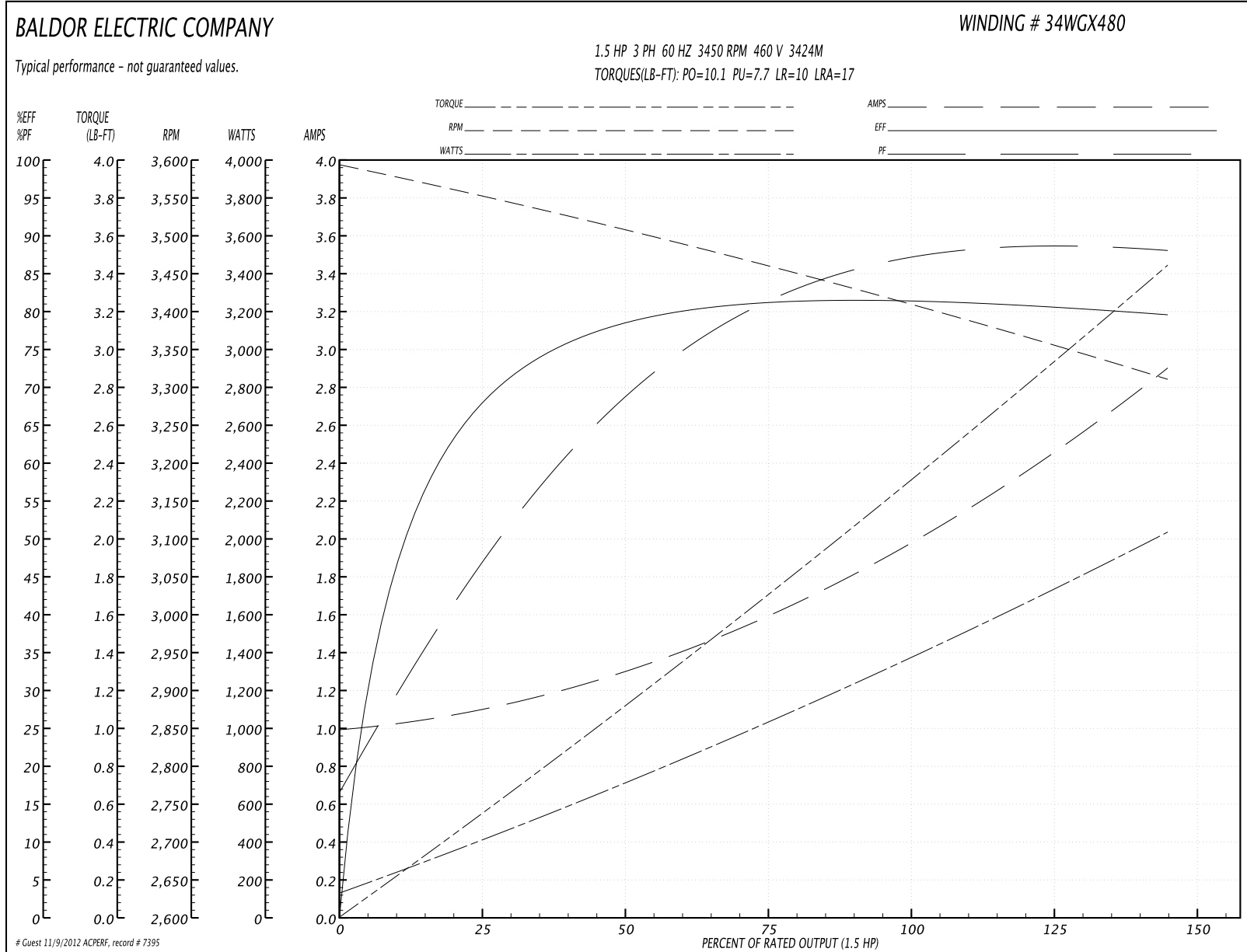
| Parts List | | |
|--------------|--|----------|
| Part Number | Description | Quantity |
| SA184373 | SA 34L408X480G1 | 1.000 EA |
| RA172212 | RA 34L408X480G1 | 1.000 EA |
| WD4100A01 | DP-875 HEYCO PLUG OR 62MP0875 MICRO PLAS | 1.000 EA |
| 11XT0832G06 | 8-32 X 3/8 TY 23 TAPPING | 1.000 EA |
| SP1000A01 | TERM BOARD, MODEL 34 SW | 1.000 EA |
| 51XW0832A07 | 8-32 X .44, TAPTITE II, HEX WSHR SLTD SE | 3.000 EA |
| RM1010A12 | .437 I.D. 1" VINYL CAP (SHORT) MOCAP | 1.000 EA |
| 34EP3202A02 | FR ENDPLATE, MACH | 1.000 EA |
| HW5100A03SP | WAVY WASHER (W1543-017) | 1.000 EA |
| 34EP3501A14E | ENDPLATE, MACH W/BLACK E-COATING | 1.000 EA |
| 51XN1032A20 | 10-32 X 1 1/4 HX WS SL SR | 2.000 EA |
| 34AD2007 | BAFFLE PLATE INJECTION MOLD | 1.000 EA |
| 51XT0632A06 | 6-32X3/8 TY23 HXWS SLDSR | 4.000 EA |
| 34FH4500A02P | DRIPCOVER, MODEL 34 | 1.000 EA |
| 51XW0832A07 | 8-32 X .44, TAPTITE II, HEX WSHR SLTD SE | 2.000 EA |
| 34CB4501SP | TERMINAL BOX LID, STAMPED X (PLATED) | 1.000 EA |
| 51XW0832A07 | 8-32 X .44, TAPTITE II, HEX WSHR SLTD SE | 2.000 EA |
| 51XW0832A07 | 8-32 X .44, TAPTITE II, HEX WSHR SLTD SE | 2.000 EA |
| MG1000G27 | PAINT- S9282E CHARCOAL GREY | 0.014 GA |
| 10XF0440S02 | 04-40 X 1/8 TYPE F HEX HD STAINLESS STIC | 2.000 EA |
| HA3100A22 | THRUBOLT 10-32 X 10.125 | 4.000 EA |
| LB5040 | INSTRUCTION TAG, AC & DC | 1.000 EA |
| LB1125C01 | STD (STOCK) CARTON LABEL BALDOR WITH FLA | 1.000 EA |
| LC0005E01 | CONN.DIA./WARNING LABEL (LC0005/LB1119) | 1.000 EA |

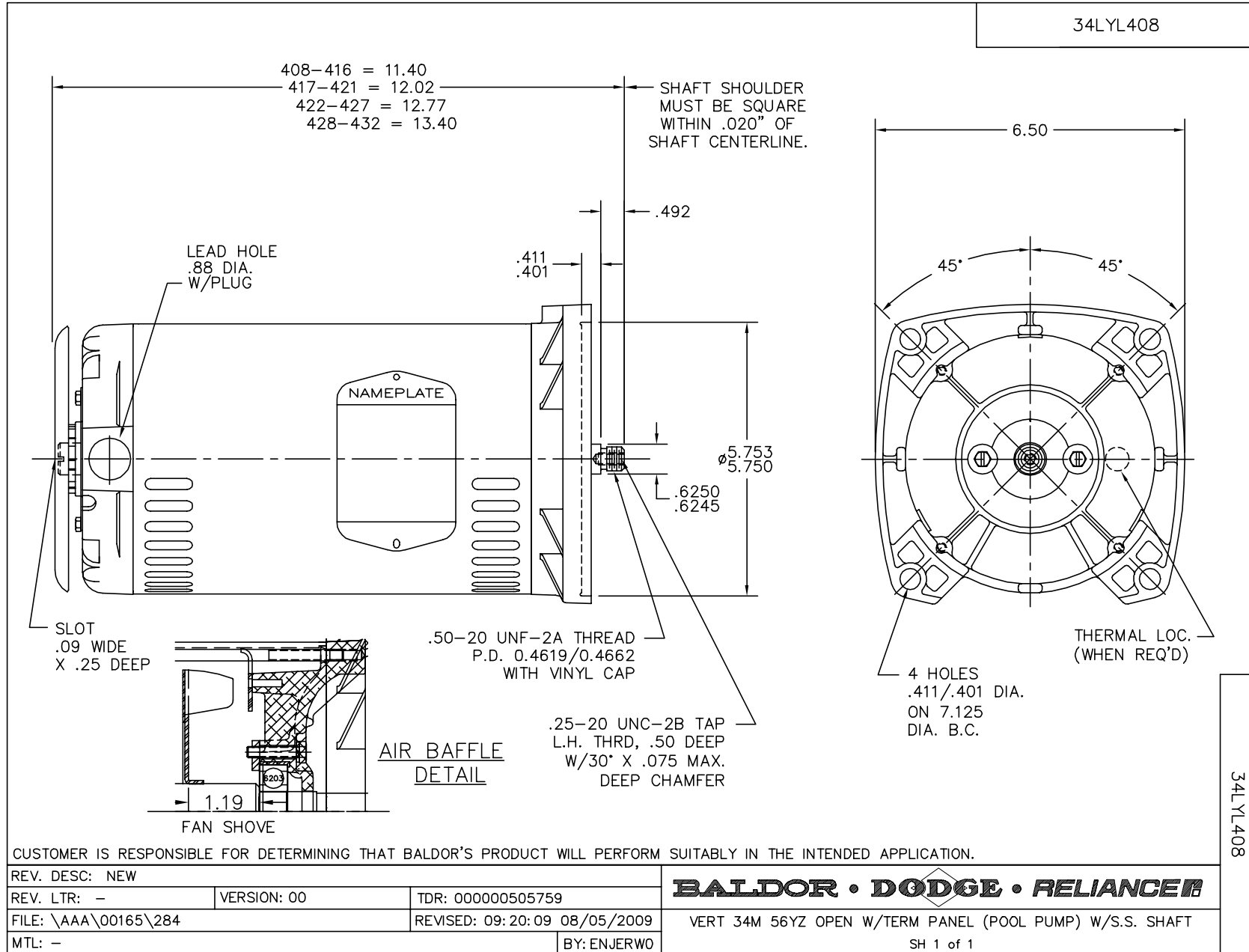
| Parts List (continued) | | |
|------------------------|---------------------------------|----------|
| Part Number | Description | Quantity |
| NP1256L | ALUM UL CSA CC | 1.000 EA |
| 34PA1005 | PACKING GROUP, BALDOR | 1.000 EA |
| PK3083T | STYROFOAM PACKING CRADLE W/TAPE | 1.000 EA |

Performance Data at 460V, 60Hz, 1.5HP (Typical performance - Not guaranteed values)

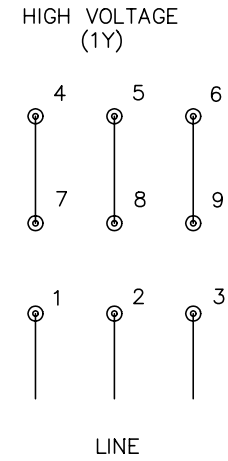
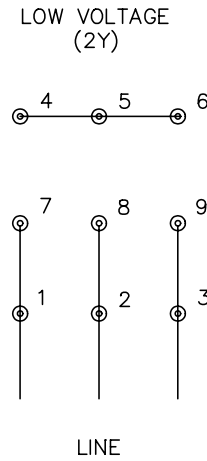
| General Characteristics | | | | | | | |
|--------------------------|---------------------------------|--------|--------|----------------------|------------|--------|------|
| Full Load Torque: | 2.3 LB-FT | | | Start Configuration: | DOL | | |
| No-Load Current: | 1.0 Amps | | | Break-Down Torque: | 10.1 LB-FT | | |
| Line-line Res. @ 25°C.: | 0.922 Ohms A Ph / 0.0 Ohms B Ph | | | Pull-Up Torque: | 7.7 LB-FT | | |
| Temp. Rise @ Rated Load: | 35 C | | | Locked-Rotor Torque: | 10.0 LB-FT | | |
| Temp. Rise @ S.F. Load: | 40 C | | | Starting Current: | 17.0 Amps | | |
| Load Characteristics | | | | | | | |
| % of Rated Load | 25 | 50 | 75 | 100 | 125 | 150 | S.F. |
| Power Factor: | 50.0 | 71.0 | 83.0 | 89.0 | 92.0 | 94.0 | 0.0 |
| Efficiency: | 68.0 | 78.4 | 81.2 | 81.6 | 80.9 | 79.4 | 0.0 |
| Speed: | 3545.0 | 3504.0 | 3460.0 | 3413.0 | 3364.0 | 3307.0 | 0.0 |
| Line Amperes: | 1.1 | 1.3 | 1.6 | 2.0 | 2.4 | 2.9 | 2.2 |

Performance Graph at 460V, 60Hz, 1.5HP Typical performance - Not guaranteed values





CD0005



NOTES:

1. INTERCHANGE ANY TWO LINE LEADS TO REVERSE ROTATION.
2. OPTIONAL THERMOSTATS ARE PROVIDED WHEN SPECIFIED.
3. ACTUAL NUMBER OF INTERNAL PARALLEL CIRCUITS MAY BE A MULTIPLE OF THOSE SHOWN ABOVE.
4. LEAD COLORS ARE OPTIONAL. LEADS MUST ALWAYS BE NUMBERED AS SHOWN.

| | | | |
|---|---------|-------------------------|--------------|
| REV. DESC: REVISE TO SHOW OPTIONAL COLORS | | | |
| REV. LTR: E | BY: JLP | REVISED: 01/19/99 10:15 | TDR: 0171435 |
| 90000 | | FILE: AAA00005140 | MDL: - |
| | | MTL: - | |

BALDOR ELECTRIC Co.

3PH, DV, 9 LEADS

CD0005