

# **BALDOR® • RELIANCE**

**Product Information Packet**

**WALKER INDUSTRIAL PRODUCTS, INC.**

**KEL11203**

**.25HP,1725RPM,1PH,60HZ,56C,3411LC,OPEN,F**

| Part Detail |      |                |        |             |          |               |            |
|-------------|------|----------------|--------|-------------|----------|---------------|------------|
| Revision:   | A    | Status:        | PRD/A  | Change #:   |          | Proprietary:  | No         |
| Type:       | AC   | Prod. Type:    | 3411LC | Elec. Spec: | 34WGR064 | CD Diagram:   | CD0055     |
| Enclosure:  | OPEN | Mfg Plant:     |        | Mech. Spec: | 34F534   | Layout:       | 34LYF534   |
| Frame:      | 56C  | Mounting:      | F1     | Poles:      | 04       | Created Date: | 09-25-2014 |
| Base:       | N    | Rotation:      | R      | Insulation: | B        | Eff. Date:    | 07-20-2015 |
| Leads:      | 6#18 |                |        |             |          | Replaced By:  |            |
| Literature: |      | Elec. Diagram: |        |             |          |               |            |

| Nameplate NP3155L |              |                |      |     |   |    |   |
|-------------------|--------------|----------------|------|-----|---|----|---|
| CAT.NO.           | KEL11203     |                |      |     |   |    |   |
| SPEC.             | 34F534R064G1 |                |      |     |   |    |   |
| HP                | .25          |                |      |     |   |    |   |
| VOLTS             | 115/230      |                |      |     |   |    |   |
| AMP               | 2.6/1.3      |                |      |     |   |    |   |
| RPM               | 1725         |                |      |     |   |    |   |
| FRAME             | 56C          | HZ             | 60   | PH  | 1 |    |   |
| SER.F.            | 1.35         | CODE           | L    | DES | - | CL | B |
| F.L. AVG. EFF.    | 68.5         | PF             | 89   |     |   |    |   |
| RATING            | 40C AMB-CONT |                |      |     |   |    |   |
| CC                |              | USABLE AT 208V | 1.9  |     |   |    |   |
| DE                | 6203         | ODE            | 6203 |     |   |    |   |
| ENCL              | OPEN         | SN             |      |     |   |    |   |
|                   | SFA 3.4/1.7  |                |      |     |   |    |   |

**AC Induction Motor Performance Data**

Record # 47419 - Typical performance - not guaranteed values

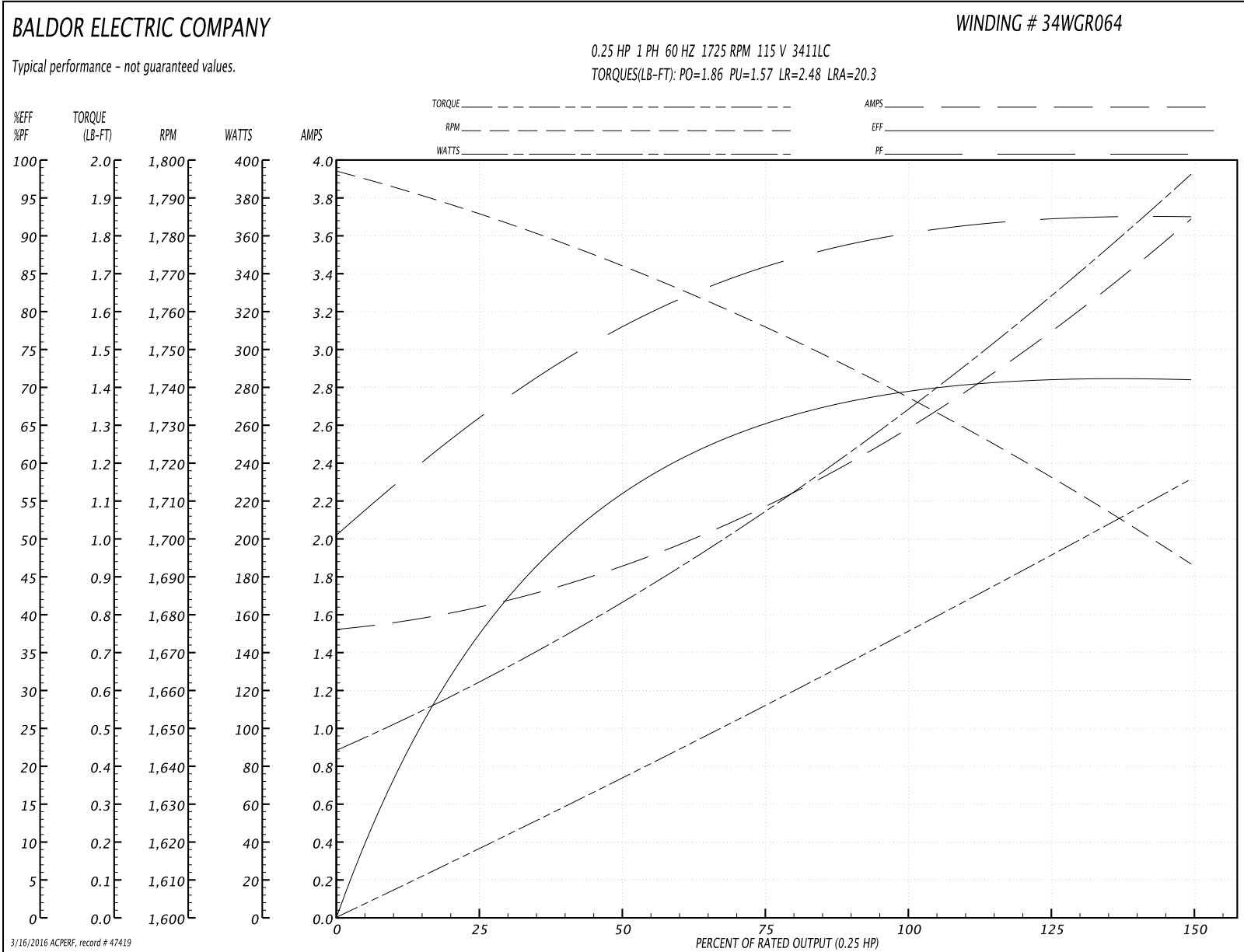
|                               |                     |                        |
|-------------------------------|---------------------|------------------------|
| <b>Winding:</b> 34WGR064-R002 | <b>Type:</b> 3411LC | <b>Enclosure:</b> OPEN |
|-------------------------------|---------------------|------------------------|

| Nameplate Data        |              |              |    | 115 V, 60 Hz:<br>Low Voltage Connection |                                |
|-----------------------|--------------|--------------|----|---|--------------------------------|
| Rated Output (HP)     | .25          |              |    | Full Load Torque                        | 0.754 LB-FT                    |
| Volts                 | 115/230      |              |    | Start Configuration                     | direct on line                 |
| Full Load Amps        | 2.6/1.3      |              |    | Breakdown Torque                        | 1.86 LB-FT                     |
| R.P.M.                | 1725         |              |    | Pull-up Torque                          | 1.57 LB-FT                     |
| Hz                    | 60           | Phase        | 1  | Locked-rotor Torque                     | 2.48 LB-FT                     |
| NEMA Design Code      | -            | KVA Code     | L  | Starting Current                        | 20.3 A                         |
| Service Factor (S.F.) | 1.35         |              |    | No-load Current                         | 1.53 A                         |
| NEMA Nom. Eff.        | 68.5         | Power Factor | 89 | Line-line Res. @ 25°C                   | 3.4881 Ω A Ph<br>6.3165 Ω B Ph |
| Rating - Duty         | 40C AMB-CONT |              |    | Temp. Rise @ Rated Load                 | 27°C                           |
| S.F. Amps             | 3.7/1.7      |              |    | Temp. Rise @ S.F. Load                  | 34°C                           |

Load Characteristics 115 V, 60 Hz, 0.25 HP

| % of Rated Load | 25     | 50     | 75     | 100    | 125    | 150    | S.F. |
|-----------------|--------|--------|--------|--------|--------|--------|------|
| Power Factor    | 67     | 79     | 85     | 90     | 92     | 94     | 93   |
| Efficiency      | 37.2   | 55.5   | 65.1   | 69.7   | 71.4   | 71.1   | 71.3 |
| Speed           | 1783.6 | 1770.8 | 1755.8 | 1739.1 | 1717.7 | 1691.5 | 1707 |
| Line amperes    | 1.63   | 1.85   | 2.18   | 2.59   | 3.1    | 3.69   | 3.34 |

Performance Graph at 115V, 60Hz, 0.25HP Typical performance - Not guaranteed values



**AC Induction Motor Performance Data**

Record # 49393 - Typical performance - not guaranteed values

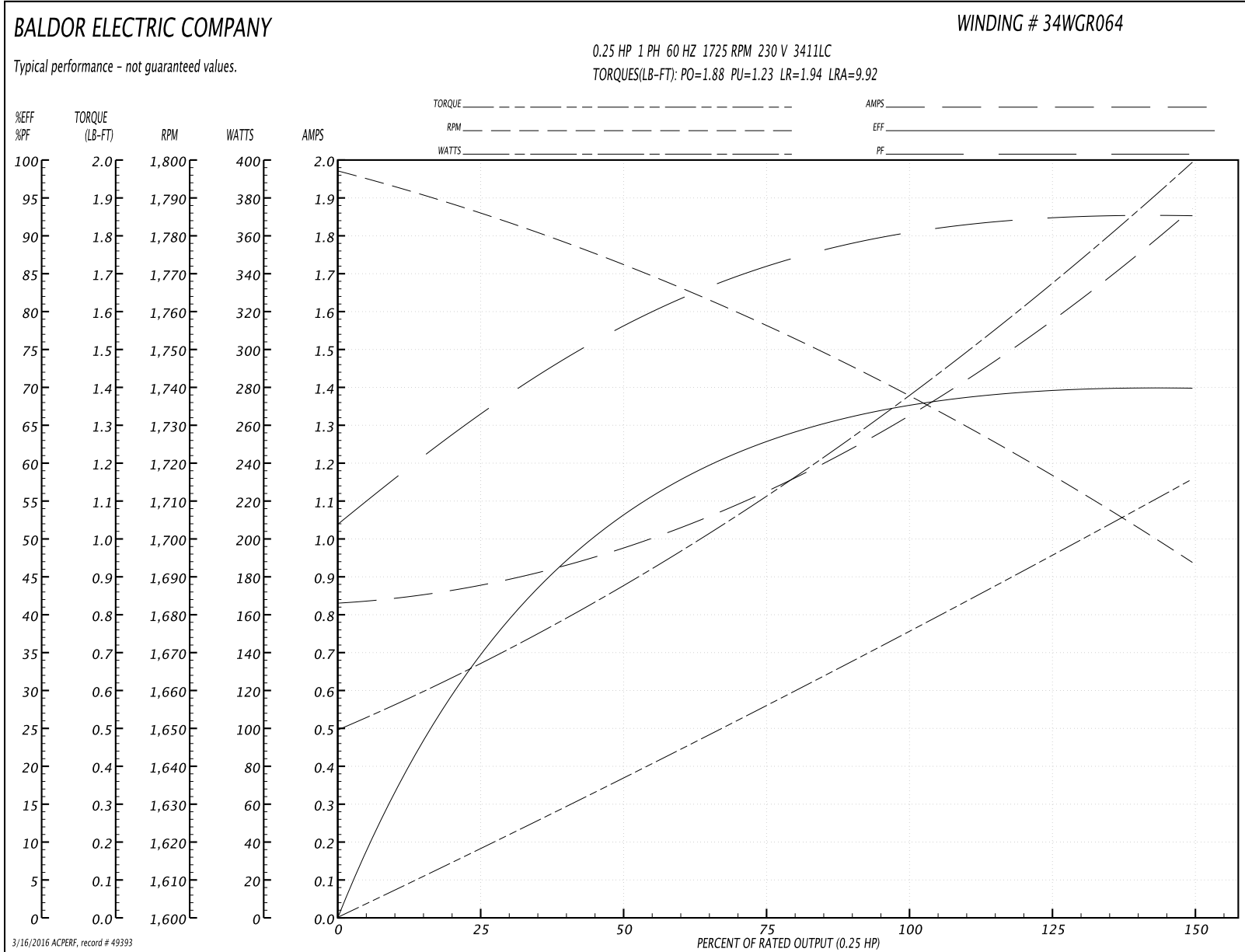
|                               |                     |                        |
|-------------------------------|---------------------|------------------------|
| <b>Winding:</b> 34WGR064-R002 | <b>Type:</b> 3411LC | <b>Enclosure:</b> OPEN |
|-------------------------------|---------------------|------------------------|

| Nameplate Data        |              |              |    | 230 V, 60 Hz:<br>High Voltage Connection |                           |
|-----------------------|--------------|--------------|----|--|---------------------------|
| Rated Output (HP)     | .25          |              |    | Full Load Torque                         | 0.753 LB-FT               |
| Volts                 | 115/230      |              |    | Start Configuration                      | direct on line            |
| Full Load Amps        | 2.6/1.3      |              |    | Breakdown Torque                         | 1.88 LB-FT                |
| R.P.M.                | 1725         |              |    | Pull-up Torque                           | 1.23 LB-FT                |
| Hz                    | 60           | Phase        | 1  | Locked-rotor Torque                      | 1.94 LB-FT                |
| NEMA Design Code      | -            | KVA Code     | L  | Starting Current                         | 9.92 A                    |
| Service Factor (S.F.) | 1.35         |              |    | No-load Current                          | 0.836 A                   |
| NEMA Nom. Eff.        | 68.5         | Power Factor | 89 | Line-line Res. @ 25°C                    | 3.39 Ω A Ph<br>6.4 Ω B Ph |
| Rating - Duty         | 40C AMB-CONT |              |    | Temp. Rise @ Rated Load                  | 30°C                      |
| S.F. Amps             | 3.4/1.7      |              |    | Temp. Rise @ S.F. Load                   | 36°C                      |
|                       |              |              |    | Rotor inertia                            | 0.0261 LB-FT <sup>2</sup> |

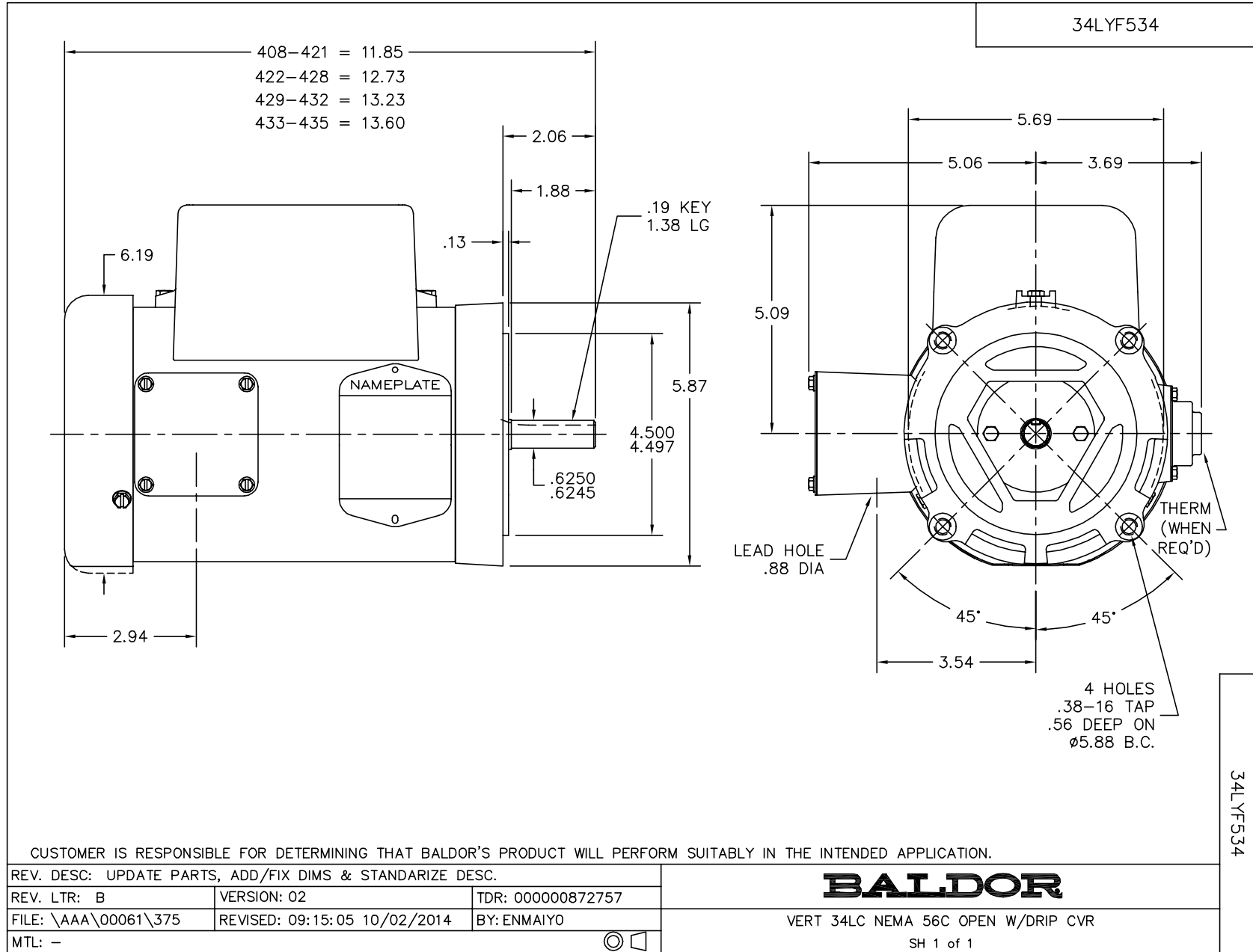
Load Characteristics 230 V, 60 Hz, 0.25 HP

| % of Rated Load | 25    | 50   | 75   | 100  | 125  | 150  | S.F. |
|-----------------|-------|------|------|------|------|------|------|
| Power Factor    | 67    | 79   | 86   | 90   | 92   | 93   | 92   |
| Efficiency      | 34.6  | 52.7 | 62.8 | 67.9 | 69.9 | 69.7 | 69.8 |
| Speed           | 1784  | 1771 | 1756 | 1740 | 1718 | 1692 | 1708 |
| Line amperes    | 0.871 | 0.97 | 1.13 | 1.33 | 1.58 | 1.87 | 1.7  |

Performance Graph at 230V, 60Hz, 0.25HP Typical performance - Not guaranteed values

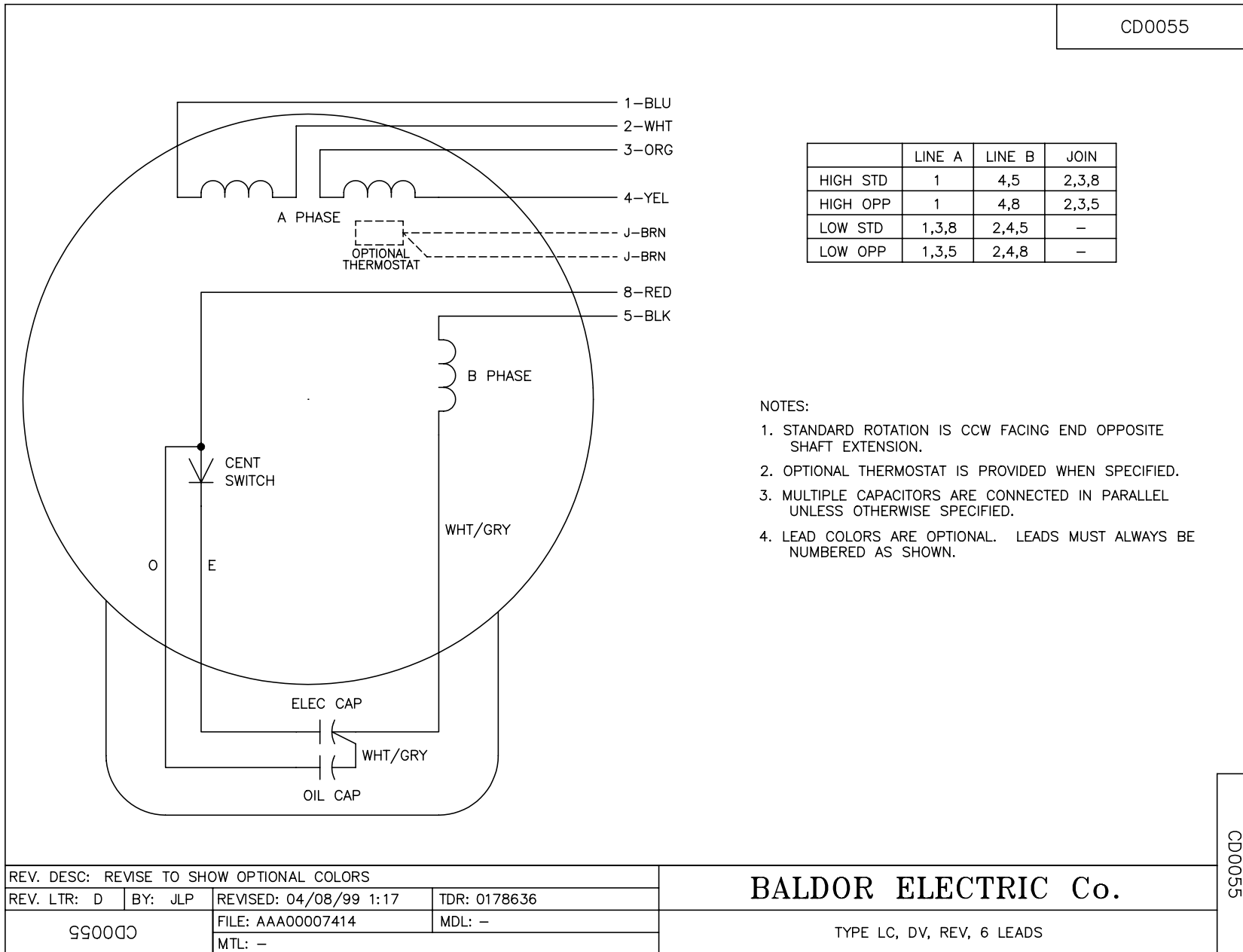


3/16/2016 ACPERF, record # 49393





CD0055



|   |         |                        |              |
|---|---------|------------------------|--------------|
| REV. DESC: REVISE TO SHOW OPTIONAL COLORS |         |                        |              |
| REV. LTR: D                               | BY: JLP | REVISED: 04/08/99 1:17 | TDR: 0178636 |
| 990000                                    |         | FILE: AAA00007414      | MDL: -       |
|   |         | MTL: -                 |              |

**BALDOR ELECTRIC Co.**

TYPE LC, DV, REV, 6 LEADS

CD0055