

# **BALDOR**® • *RELIANCE*

## Product Information Packet

### **KM3454-57**

**.25 IP44HP,1425RPM,3PH,50HZ,56C,3410M**

Copyright © All product information within this document is subject to Baldor Electric Company copyright © protection, unless otherwise noted.

Part Detail									
Revision:	A	Status:	PRD/A	Change #:		Proprietary:	No		
Type:	AC	Prod. Type:	3410M	Elec. Spec:	34WGS886	CD Diagram:			
Enclosure:	TEFC	Mfg Plant:		Mech. Spec:	34A063	Layout:			
Frame:	56C	Mounting:	F1	Poles:	04	Created Date:	09-02-2011		
Base:	N	Rotation:	R	Insulation:	B	Eff. Date:	08-10-2012		
Leads:	6#18	Literature:		Elec. Diagram:		Replaced By:			
Nameplate NP1372L									
CAT.NO.	KM3454-57								
SPEC.	34A063S886G1								
HP	.25 IP44								
VOLTS	230/400								
AMP	1.2/7								
RPM	1425								
FRAME	56C	HZ	50			PH	3		
SER.F.	1.25	CODE	L			DES	B	CL	B
NEMA-NOM-EFF	64	PF	59						
RATING	40C AMB-CONT								
CC					USABLE AT 208V				
DE	6203	ODE				6203			
ENCL	TEFC	SN							
	SFA 1.3/.75								

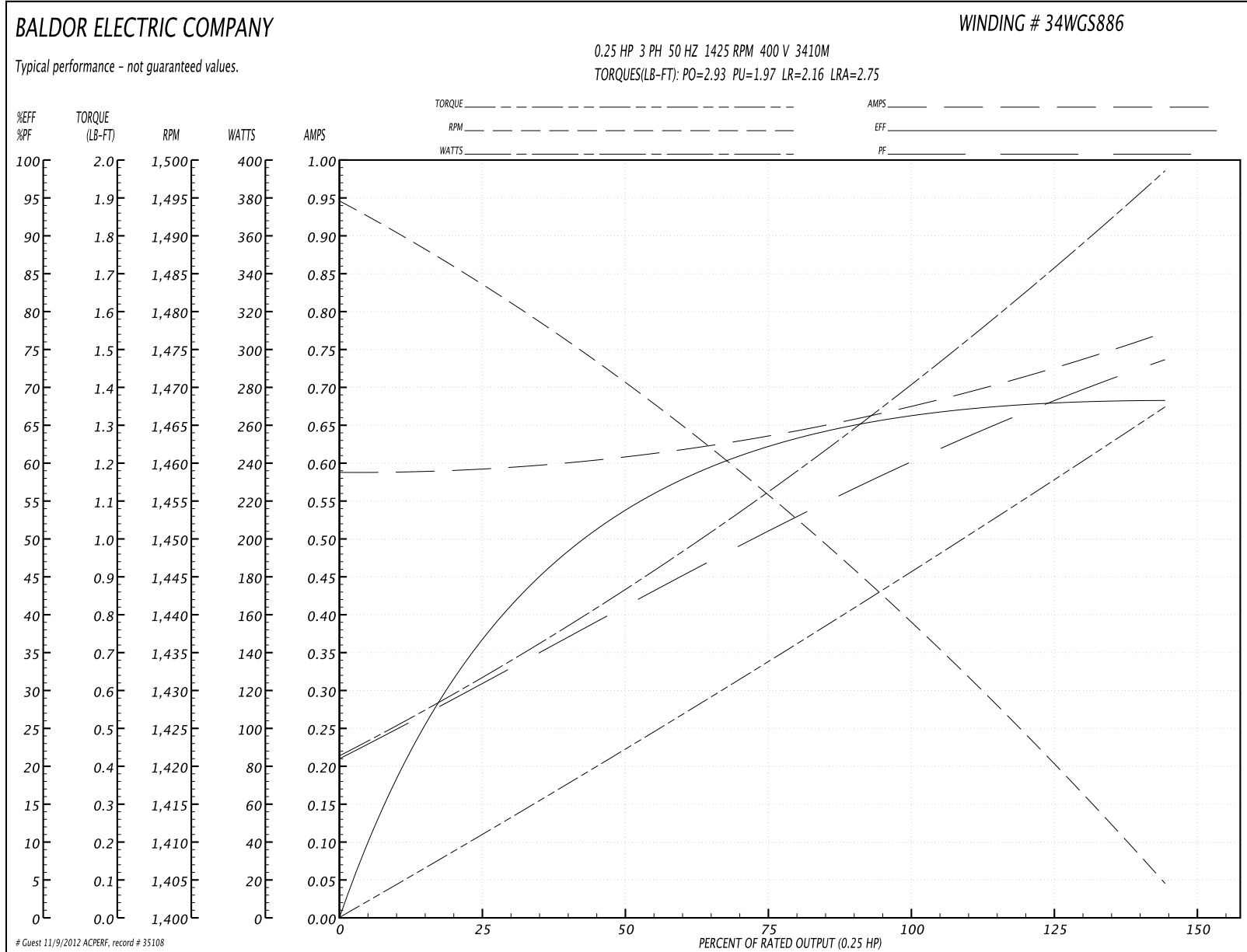
Parts List		
Part Number	Description	Quantity
SA230020	SA 34A063S886G1	1.000 EA
RA217054	RA 34A063S886G1	1.000 EA
NS2512A01	INSULATOR, CONDUIT BOX X	1.000 EA
34CB3002A	CB CAST W/.88 DIA HOLE	1.000 EA
34GS1029A01	GASKET, CONDUIT BOX	1.000 EA
51XB1016A07	10-16 X 7/16 HXWSSLD SERTYB	2.000 EA
11XW1032G06	10-32 X .38, TAPTITE II, HEX WSHR SLTD U	1.000 EA
34EP3102A01SP	FR ENDPLATE, MACH	1.000 EA
HW5100A03SP	WAVY WASHER (W1543-017)	1.000 EA
34EP3300A24SP	PU ENDPLATE, MACH	1.000 EA
51XN1032A20	10-32 X 1 1/4 HX WS SL SR	2.000 EA
34FN3002A01SP	EXTERNAL FAN, PLASTIC, .637/.639 HUB W/	1.000 EA
51XW1032A06	10-32 X .38, TAPTITE II, HEX WSHR SLTD S	3.000 EA
34CB4517	CB LID 4 MTG HOLES .22 DIA STAMPED, FOR	1.000 EA
34GS1031A01	GASKET, FLAT CONDUIT BOX LID (LEXIDE)	1.000 EA
51XW0832A07	8-32 X .44, TAPTITE II, HEX WSHR SLTD SE	4.000 EA
HW2501D13SP	KEY, 3/16 SQ X 1.375	1.000 EA
34FH4002A01	IEC FH NO GREASER	1.000 EA
HA7000A04	KEY RETAINER 0.625 DIA SHAFTS	1.000 EA
MG1000G27	PAINT- S9282E CHARCOAL GREY	0.014 GA
10XF0440S02	04-40 X 1/8 TYPE F HEX HD STAINLESS STIC	2.000 EA
HA4067A01	PUSH IN DRAIN FITTING (BLACK)	1.000 EA
HA4067A01	PUSH IN DRAIN FITTING (BLACK)	1.000 EA
HA3100A12	THRUBOLT 10-32 X 7.375	4.000 EA

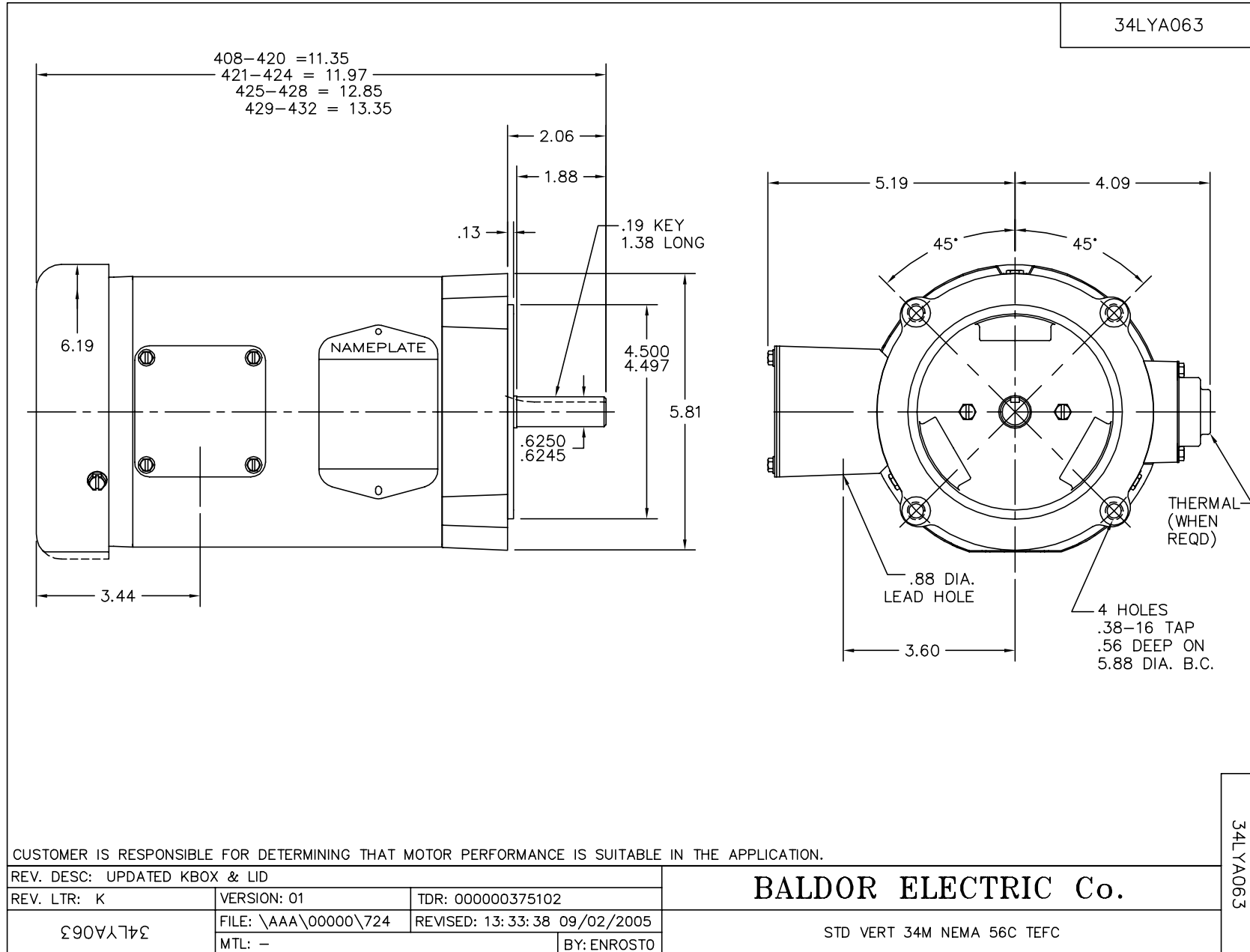
Parts List (continued)		
Part Number	Description	Quantity
LB1119	WARNING LABEL	1.000 EA
LB1125C01	STD (STOCK) CARTON LABEL BALDOR WITH FLA	1.000 EA
LB5040	INSTRUCTION TAG, AC & DC	1.000 EA
LC0034	CONNECTION LABEL	1.000 EA
NP1372L	ALUM UL CSA CE CC	1.000 EA
34PA1005	PACKING GROUP, BALDOR	1.000 EA

**Performance Data at 400V, 50Hz, 0.25HP (Typical performance - Not guaranteed values)**

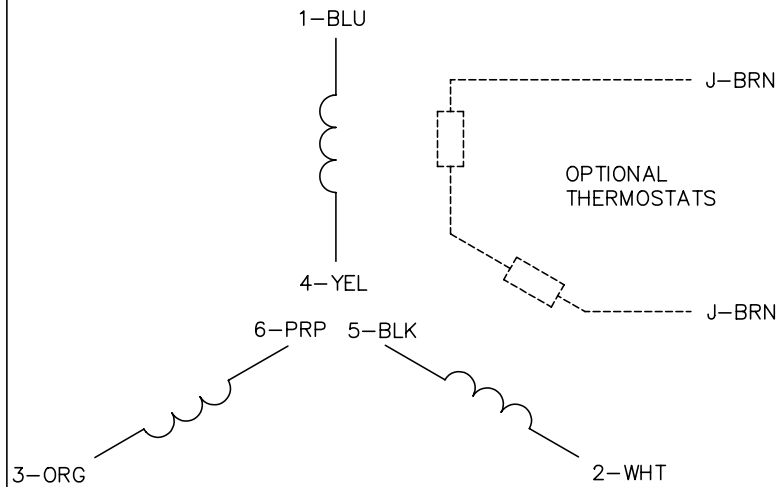
General Characteristics							
Full Load Torque:	0.901 LB-FT			Start Configuration:	DOL		
No-Load Current:	0.59 Amps			Break-Down Torque:	2.93 LB-FT		
Line-line Res. @ 25°C.:	72.0 Ohms A Ph / 0.0 Ohms B Ph			Pull-Up Torque:	1.97 LB-FT		
Temp. Rise @ Rated Load:	53 C			Locked-Rotor Torque:	2.16 LB-FT		
Temp. Rise @ S.F. Load:	60 C			Starting Current:	2.75 Amps		
Load Characteristics							
% of Rated Load	25	50	75	100	125	150	S.F.
Power Factor:	30.0	42.0	51.0	59.0	67.0	74.0	67.0
Efficiency:	37.9	53.7	61.9	66.1	68.2	68.2	68.2
Speed:	1483.0	1470.0	1456.0	1440.0	1423.0	1404.0	1423.0
Line Amperes:	0.592	0.603	0.635	0.678	0.723	0.769	0.723

Performance Graph at 400V, 50Hz, 0.25HP Typical performance - Not guaranteed values

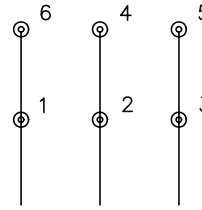




CD0022

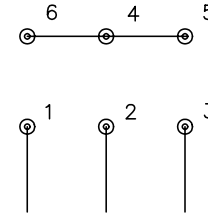


LOW VOLTAGE  
(1D)



LINE

HIGH VOLTAGE  
(1Y)



LINE

NOTES:

1. INTERCHANGE ANY TWO LINE LEADS TO REVERSE ROTATION.
2. OPTIONAL THERMOSTATS ARE PROVIDED WHEN SPECIFIED.
3. ACTUAL NUMBER OF INTERNAL PARALLEL CIRCUITS MAY BE A MULTIPLE OF THOSE SHOWN ABOVE.
4. LEAD COLORS ARE OPTIONAL. LEADS MUST ALWAYS BE NUMBERED AS SHOWN.

REV. DESC: REVISE TO SHOW OPTIONAL COLORS			
REV. LTR: F	BY: JLP	REVISED: 01/21/99 3:54	TDR: 0171435
CD0022		FILE: AAA00005144	MDL: -
		MTL: -	

**BALDOR ELECTRIC Co.**

3PH, DV, 6 LEADS, DELTA/WYE CONNECTION

CD0022