

BALDOR® • RELIANCE

Product Information Packet

L1408T-50

3HP, 1425RPM, 1PH, 50HZ, 184T, 3646LC, OPEN, F1

Copyright © All product information within this document is subject to Baldor Electric Company copyright © protection, unless otherwise noted.

| Part Detail | | | | | | | |
|-------------|---------------------|-------------|--------|----------------|----------|---------------|------------|
| Revision: | AH | Status: | PRD/A | Change #: | | Proprietary: | No |
| Type: | AC | Prod. Type: | 3646LC | Elec. Spec: | 36WGX359 | CD Diagram: | |
| Enclosure: | OPEN | Mfg Plant: | | Mech. Spec: | 36E002 | Layout: | |
| Frame: | 184T | Mounting: | F1 | Poles: | 04 | Created Date: | |
| Base: | RG | Rotation: | R | Insulation: | B | Eff. Date: | 05-22-2012 |
| Leads: | 4#14 A PH,2#16 B PH | Literature: | | Elec. Diagram: | | Replaced By: | |

| Nameplate NP1372L | | | | | | | |
|-------------------|----------------|------|------|-----|---|----|---|
| CAT.NO. | L1408T-50 | | | | | | |
| SPEC. | 36E02X359 | | | | | | |
| HP | 3 | | | | | | |
| VOLTS | 110/220 | | | | | | |
| AMP | 32/16 | | | | | | |
| RPM | 1425 | | | | | | |
| FRAME | 184T | HZ | 50 | PH | 1 | | |
| SER.F. | 1.15 | CODE | G | DES | L | CL | B |
| NEMA-NOM-EFF | 75.5 | PF | 85 | | | | |
| RATING | 40C AMB-CONT | | | | | | |
| CC | USABLE AT 208V | | | | | | |
| DE | 6206 | ODE | 6205 | | | | |
| ENCL | OPEN | SN | | | | | |
| | IP23 | | | | | | |

| Parts List | | |
|---------------|--|----------|
| Part Number | Description | Quantity |
| SA034429 | SA 36E02X359 | 1.000 EA |
| RA030457 | RA 36E02X359 | 1.000 EA |
| OC3030F11SP | CYL OIL CAP 30MFD/370V | 1.000 EA |
| EC1850A06SP | ELEC CAP 115V 2.0 X 4.3 X | 1.000 EA |
| 36CB3004 | 36 CB CASTING W/1.09 DIA LEAD HOLE @ 6:0 | 1.000 EA |
| 51XB1016A08 | 10-16X 1/2HXWSSLD SERTYB | 2.000 EA |
| 11XW1032G06 | 10-32 X .38, TAPTITE II, HEX WSHR SLTD U | 1.000 EA |
| HW3001B01 | 003SS CUP WASHER, FOR #8 SCREW | 1.000 EA |
| 36EP3200A01SP | FR ENDPLATE, MACH | 1.000 EA |
| HW4500A01 | 1641B(ALEMITE)400 UNIV, GREASE FITT | 1.000 EA |
| SP1008A01 | BAFFLE, MODEL 36 & 37 | 1.000 EA |
| 13XT0832A07 | 8-32X7/16 TYP 23 PAN HD SLT DX | 2.000 EA |
| 10XN2520A12 | O1/4-20X 3/4 HEX HEAD CAP | 2.000 EA |
| HW5100A05 | WVY WSHR F/205 & 304 BRGS | 1.000 EA |
| 36EP3201A01 | PU ENDPLATE, MACH 182-4T | 1.000 EA |
| HW4500A01 | 1641B(ALEMITE)400 UNIV, GREASE FITT | 1.000 EA |
| XY2520A12 | 1/4-20 HEX NUT, DIRECTIONAL SERRATIONS | 4.000 EA |
| 36CB4516 | 36 LIPPED CB LID | 1.000 EA |
| 51XW0832A07 | 8-32 X .44, TAPTITE II, HEX WSHR SLTD SE | 4.000 EA |
| HW2501E16 | 3KEY, 1/4 SQ X 1.750 | 1.000 EA |
| HA7000A02 | KEY RETAINER RING, 1 1/8 DIA, 1 3/8 DIA | 1.000 EA |
| 85XU0407S04 | 4X1/4 U DRIVE PIN STAINLESS | 2.000 EA |
| HA6362ZP | LIFTING LUG FOR 36 FRAME MOTORS. | 2.000 EA |
| WD1000A15 | 3-520132-2 AMP FLAG (4M/RL NON-CANC/NON- | 2.000 EA |

| Parts List (continued) | | |
|------------------------|--|----------|
| Part Number | Description | Quantity |
| 36CB3800SP | CAPACITOR COVER, CAST | 1.000 EA |
| HA7010A01 | CAPACITOR RETENTION CLAMP, 6.562 LONG | 1.000 EA |
| MJ1000A75 | GREASE, POLYREX EM EXXON | 0.050 LB |
| MG1000G27 | PAINT- S9282E CHARCOAL GREY | 0.022 GA |
| LB1115 | LABEL,LIFTING DEVICE | 1.000 EA |
| HA3101A40 | THRUBOLT 1/4-20 X 12.687 | 4.000 EA |
| LB5040 | INSTRUCTION TAG, AC & DC | 1.000 EA |
| SP5064A01 | MODEL 36 TYPE LC STATIONARY SWITCH LEAD | 1.000 EA |
| LB1125C01 | STD (STOCK) CARTON LABEL BALDOR WITH FLA | 1.000 EA |
| LB1119 | WARNING LABEL | 1.000 EA |
| LC0001 | CONN LABEL TYPE L, 6 LEAD, DUAL VOLTS, R | 1.000 EA |
| NP1372L | ALUM UL CSA CE CC | 1.000 EA |
| G7PA1000 | PACKAGING GROUP / BALDOR | 1.000 EA |

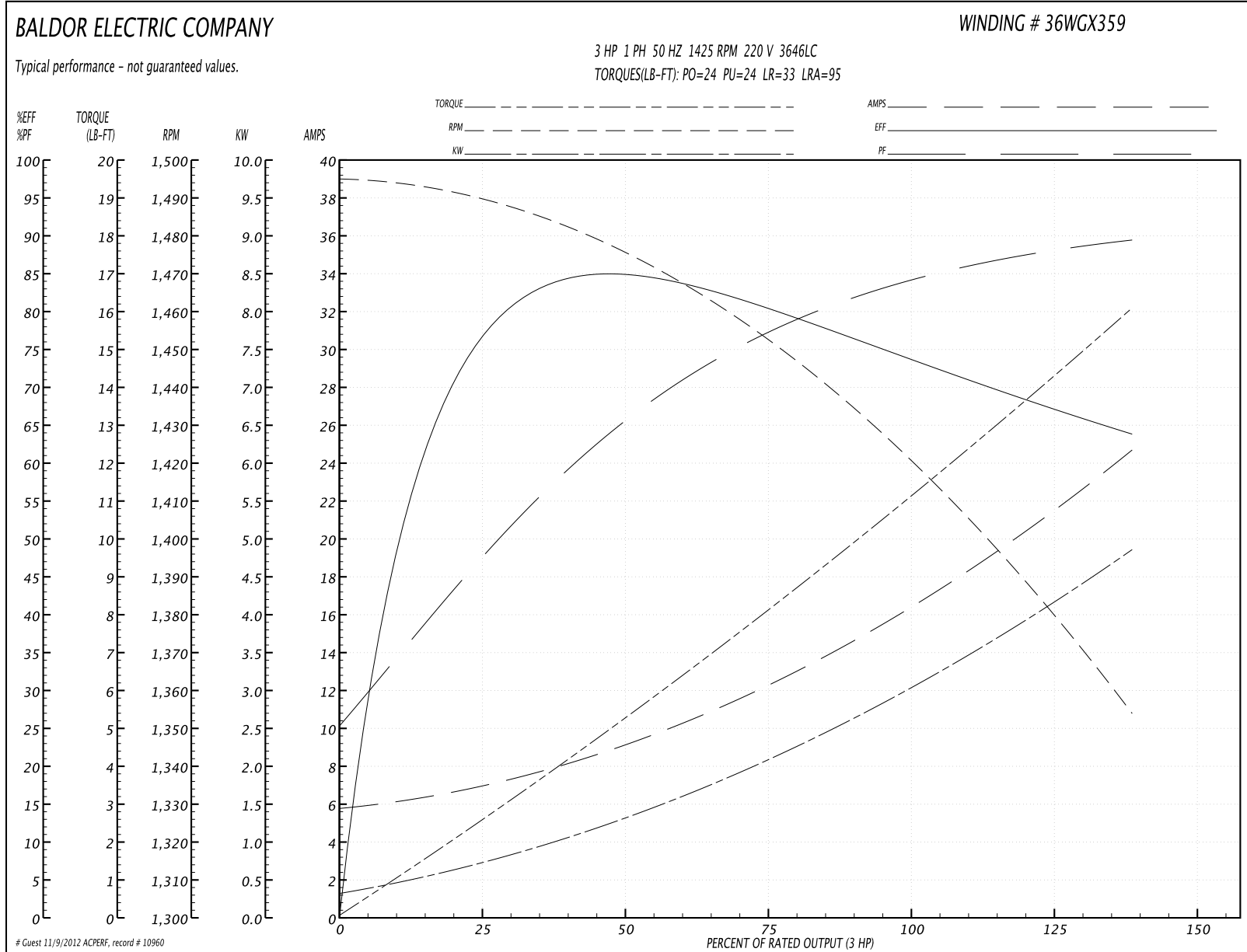
| Accessories | | |
|---------------|--------------|------------|
| Part Number | Description | Multiplier |
| 36-3403 | C FACE KIT | A8 |
| 36EP1405A09SP | D-FLANGE KIT | A8 |

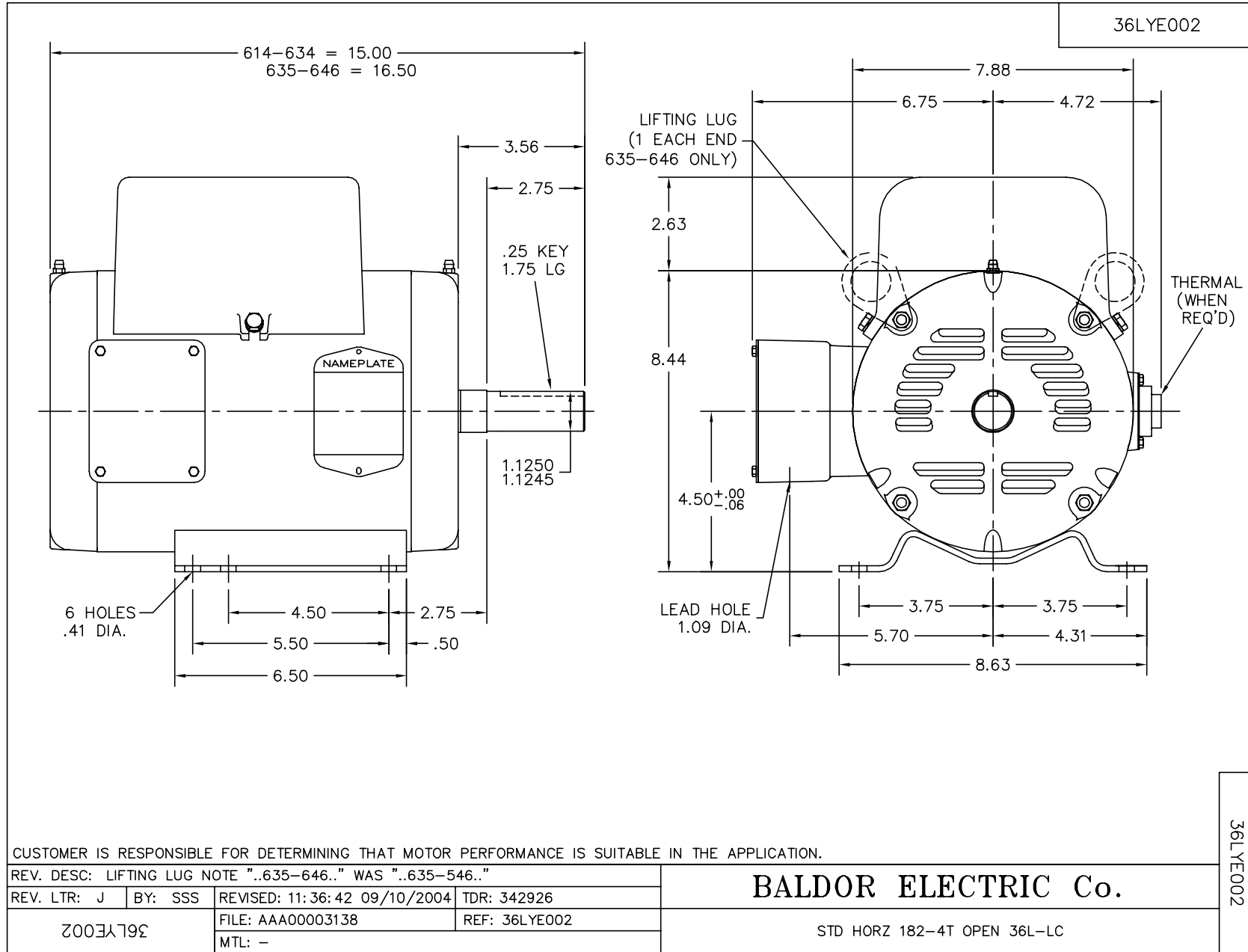
Performance Data at 220V, 50Hz, 3.0HP (Typical performance - Not guaranteed values)

| General Characteristics | | | |
|--------------------------|-----------------------------------|----------------------|------------|
| Full Load Torque: | 10.8 LB-FT | Start Configuration: | DOL |
| No-Load Current: | 5.7 Amps | Break-Down Torque: | 24.0 LB-FT |
| Line-line Res. @ 25°C.: | 0.828 Ohms A Ph / 0.999 Ohms B Ph | Pull-Up Torque: | 24.0 LB-FT |
| Temp. Rise @ Rated Load: | 80 C | Locked-Rotor Torque: | 33.0 LB-FT |
| Temp. Rise @ S.F. Load: | 90 C | Starting Current: | 95.0 Amps |

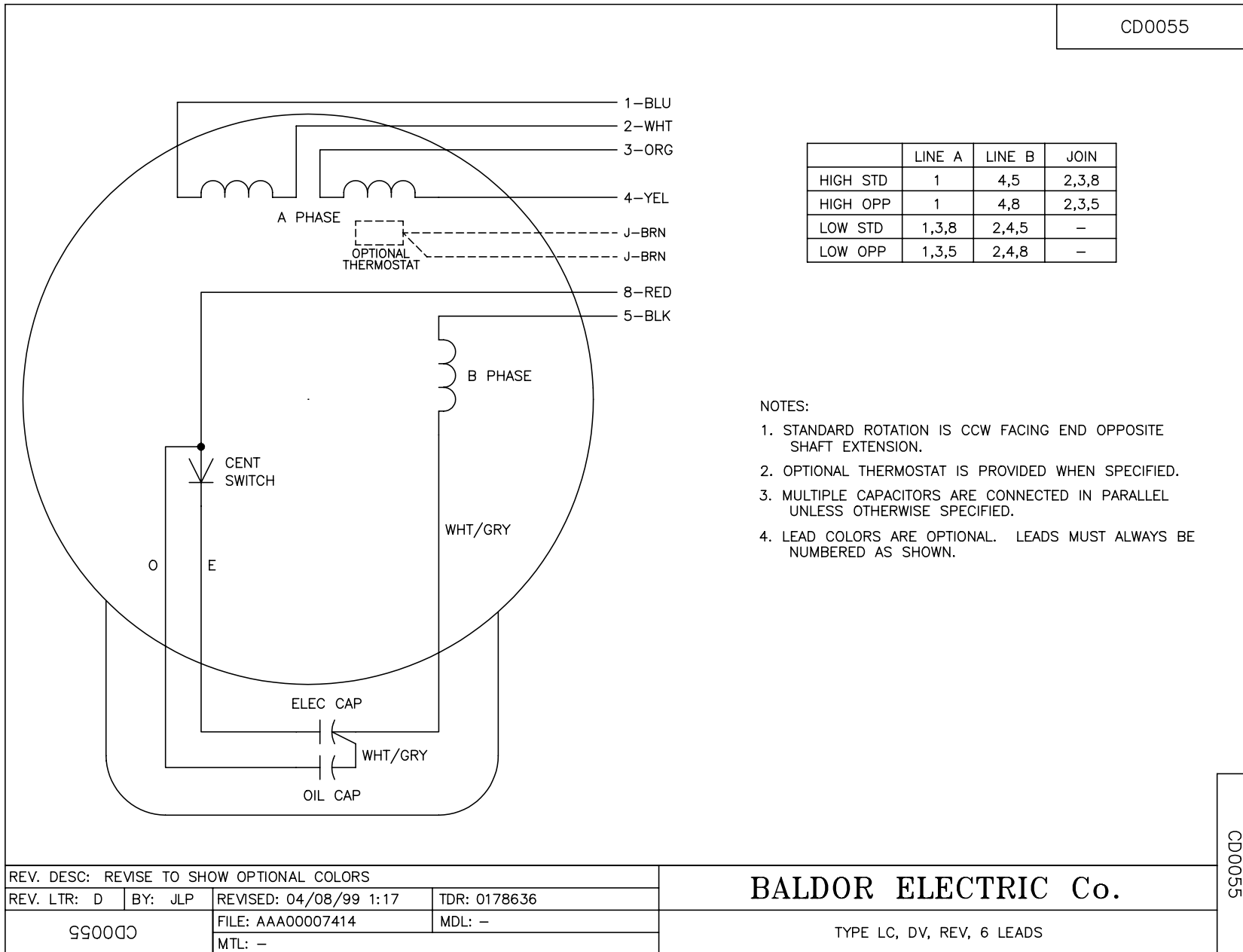
| Load Characteristics | | | | | | | |
|----------------------|--------|--------|--------|--------|--------|--------|--------|
| % of Rated Load | 25 | 50 | 75 | 100 | 125 | 150 | S.F. |
| Power Factor: | 54.0 | 66.0 | 76.0 | 83.0 | 87.0 | 90.0 | 85.0 |
| Efficiency: | 70.8 | 78.5 | 82.5 | 75.6 | 70.2 | 62.6 | 72.4 |
| Speed: | 1487.0 | 1466.0 | 1459.0 | 1425.0 | 1396.0 | 1348.0 | 1408.0 |
| Line Amperes: | 6.8 | 9.8 | 12.1 | 15.8 | 20.0 | 25.0 | 18.32 |

Performance Graph at 220V, 50Hz, 3.0HP Typical performance - Not guaranteed values





CD0055



| | | | |
|---|---------|------------------------|--------------|
| REV. DESC: REVISE TO SHOW OPTIONAL COLORS | | | |
| REV. LTR: D | BY: JLP | REVISED: 04/08/99 1:17 | TDR: 0178636 |
| 990055 | | FILE: AAA00007414 | MDL: - |
| | | MTL: - | |

BALDOR ELECTRIC Co.

TYPE LC, DV, REV, 6 LEADS

CD0055