

# **BALDOR® • RELIANCE**

## **Product Information Packet**

### **L1408T**

**3HP,1725RPM,1PH,60HZ,184T,3634LC,OPEN,F1**

Copyright © All product information within this document is subject to Baldor Electric Company copyright © protection, unless otherwise noted.

Part Detail							
Revision:	AG	Status:	PRD/A	Change #:		Proprietary:	No
Type:	AC	Prod. Type:	3634LC	Elec. Spec:	36WG2759	CD Diagram:	
Enclosure:	OPEN	Mfg Plant:		Mech. Spec:	36E002	Layout:	
Frame:	184T	Mounting:	F1	Poles:	04	Created Date:	
Base:	RG	Rotation:	R	Insulation:	B	Eff. Date:	05-22-2012
Leads:	4#14 A PH,3#16 B PH	Literature:		Elec. Diagram:		Replaced By:	

Nameplate NP1256L									
CAT.NO.	L1408T								
SPEC.	36E02-2759								
HP	3								
VOLTS	115/230								
AMP	32/16								
RPM	1725								
FRAME	184T	HZ	60	PH	1				
SER.F.	1.15	CODE	H	DES	L	CLASS	B		
NEMA-NOM-EFF	78	PF	78						
RATING	40C AMB-CONT								
CC				USABLE AT 208V	16.8				
DE	6206	ODE	6205						
ENCL	OPEN	SN							

Parts List		
Part Number	Description	Quantity
SA034423	SA 36E02-2759	1.000 EA
RA030451	RA 36E02-2759	1.000 EA
36CB3004	36 CB CASTING W/1.09 DIA LEAD HOLE @ 6:0	1.000 EA
51XB1016A08	10-16X 1/2HXWSSLD SERTYB	2.000 EA
11XW1032G06	10-32 X .38, TAPTITE II, HEX WSHR SLTD U	1.000 EA
HW3001B01	003SS CUP WASHER, FOR #8 SCREW	1.000 EA
36EP3200A01SP	FR ENDPLATE, MACH	1.000 EA
HW4500A01	1641B(ALEMITE)400 UNIV, GREASE FITT	1.000 EA
SP1008A01	BAFFLE, MODEL 36 & 37	1.000 EA
13XT0832A07	8-32X7/16 TYP 23 PAN HD SLT DX	2.000 EA
10XN2520A12	O1/4-20X 3/4 HEX HEAD CAP	2.000 EA
HW5100A05	WVY WSHR F/205 & 304 BRGS	1.000 EA
36EP3201A01	PU ENDPLATE, MACH 182-4T	1.000 EA
HW4500A01	1641B(ALEMITE)400 UNIV, GREASE FITT	1.000 EA
XY2520A12	1/4-20 HEX NUT, DIRECTIONAL SERRATIONS	4.000 EA
36CB4516	36 LIPPED CB LID	1.000 EA
51XW0832A07	8-32 X .44, TAPTITE II, HEX WSHR SLTD SE	4.000 EA
HW2501E16	3KEY, 1/4 SQ X 1.750	1.000 EA
HA7000A02	KEY RETAINER RING, 1 1/8 DIA, 1 3/8 DIA	1.000 EA
85XU0407S04	4X1/4 U DRIVE PIN STAINLESS	2.000 EA
MJ1000A75	GREASE, POLYREX EM EXXON	0.050 LB
MG1000G27	PAINT- S9282E CHARCOAL GREY	0.022 GA
HA3101A25	THRUBOLT 1/4-20 X 11.000 OHIO ROD	4.000 EA
36CB5010A01	CAPACITOR BOX KIT, 36CB3800, OC3020F12	1.000 EA

Parts List (continued)		
Part Number	Description	Quantity
SP5064A06	MODEL 36 TYPE LC STAT SWITCH LEAD ASSEMB	1.000 EA
LB1119	WARNING LABEL	1.000 EA
LB1125C01	STD (STOCK) CARTON LABEL BALDOR WITH FLA	1.000 EA
LC0016	CONNECTION LABEL	1.000 EA
NP1256L	ALUM UL CSA CC	1.000 EA
G7PA1000	PACKAGING GROUP / BALDOR	1.000 EA

Accessories		
Part Number	Description	Multiplier
36-3403	C FACE KIT	A8
36EP1405A09SP	D-FLANGE KIT	A8

**Performance Data at 230V, 60Hz, 3.0HP (Typical performance - Not guaranteed values)**

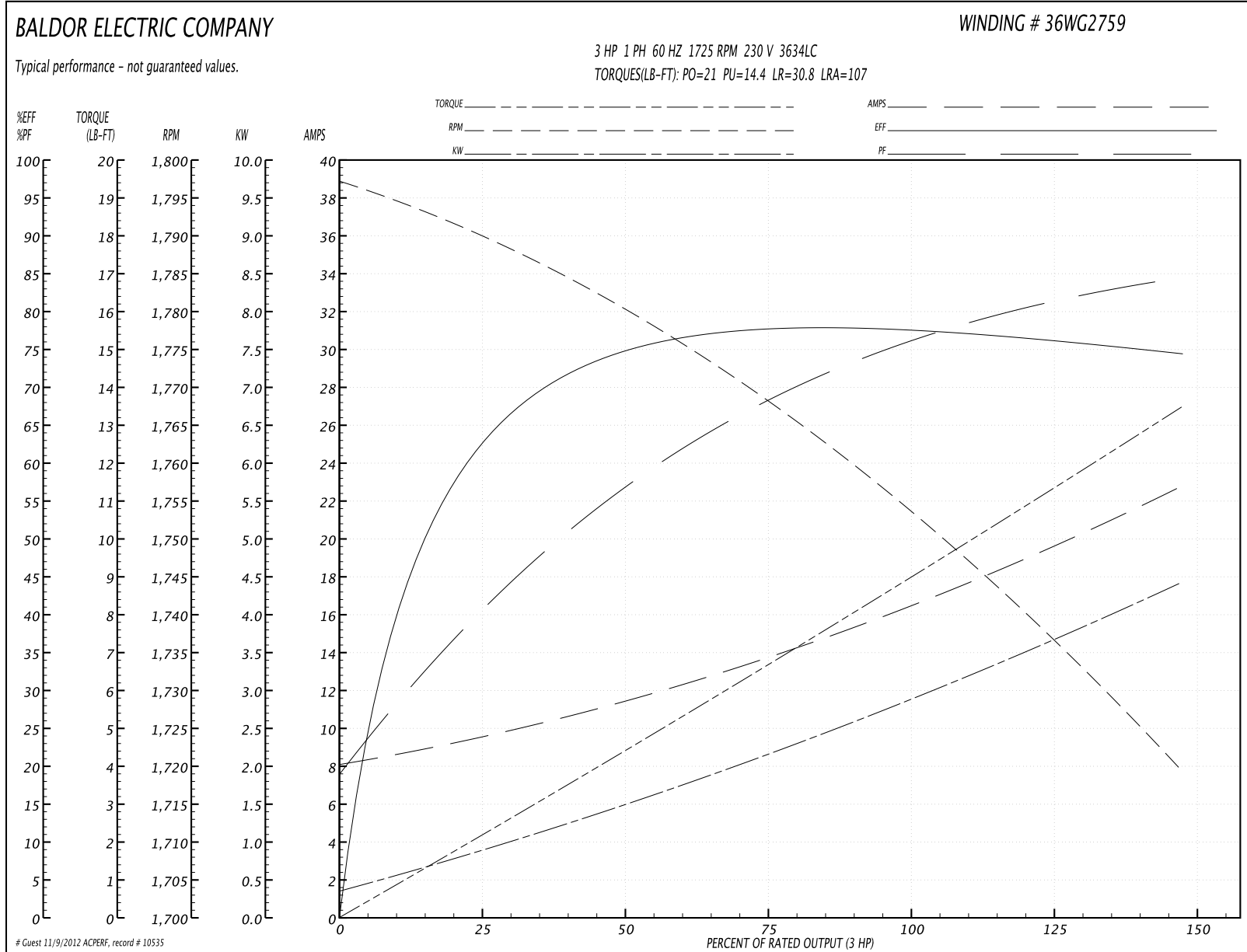
**General Characteristics**

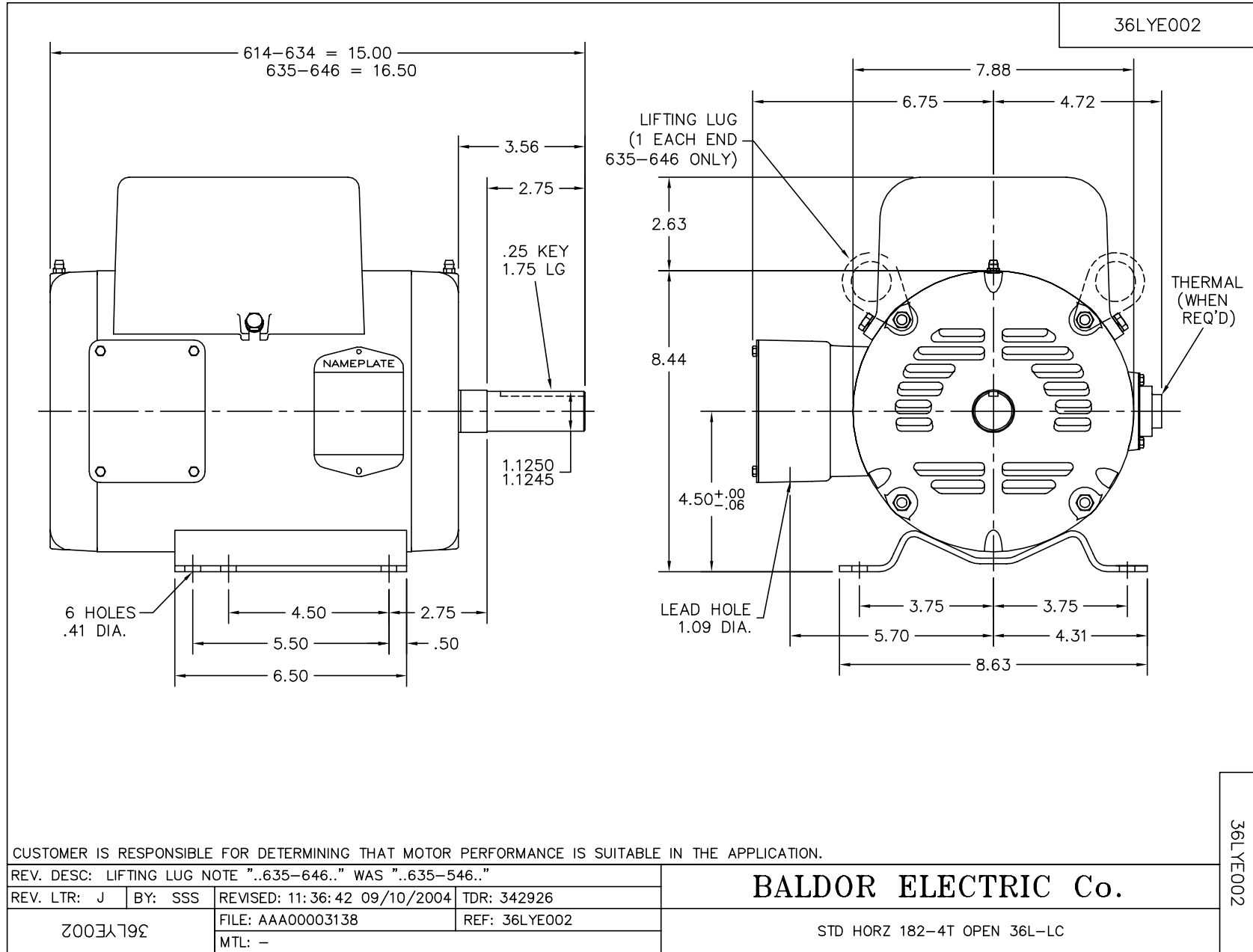
<b>Full Load Torque:</b>	9.0 LB-FT	<b>Start Configuration:</b>	DOL
<b>No-Load Current:</b>	8.5 Amps	<b>Break-Down Torque:</b>	21.0 LB-FT
<b>Line-line Res. @ 25°C.:</b>	4.156 Ohms A Ph / 0.586 Ohms B Ph	<b>Pull-Up Torque:</b>	14.4 LB-FT
<b>Temp. Rise @ Rated Load:</b>	57 C	<b>Locked-Rotor Torque:</b>	30.8 LB-FT
<b>Temp. Rise @ S.F. Load:</b>	72 C	<b>Starting Current:</b>	107.0 Amps

**Load Characteristics**

<b>% of Rated Load</b>	<b>25</b>	<b>50</b>	<b>75</b>	<b>100</b>	<b>125</b>	<b>150</b>	<b>S.F.</b>
<b>Power Factor:</b>	45.0	64.0	73.0	79.0	85.0	83.0	83.0
<b>Efficiency:</b>	62.6	74.9	78.6	78.0	75.0	74.9	76.1
<b>Speed:</b>	1788.0	1780.0	1769.0	1756.0	1733.0	1721.0	1742.0
<b>Line Amperes:</b>	9.1	10.4	15.8	16.0	19.0	23.0	17.8

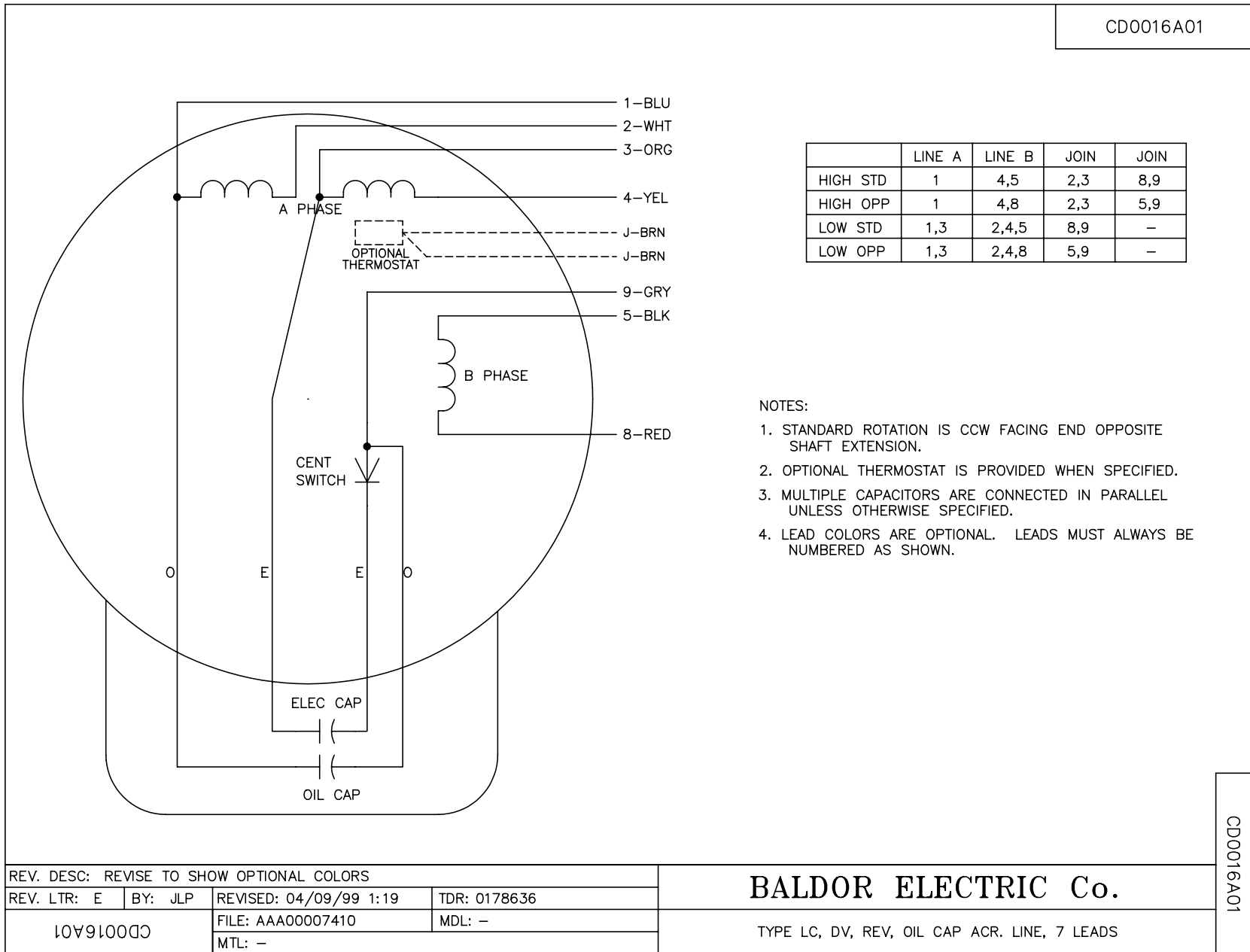
Performance Graph at 230V, 60Hz, 3.0HP Typical performance - Not guaranteed values







CD0016A01



REV. DESC: REVISE TO SHOW OPTIONAL COLORS			
REV. LTR: E	BY: JLP	REVISED: 04/09/99 1:19	TDR: 0178636
10V91000C		FILE: AAA00007410	MDL: -
CD0016A01		MTL: -	

**BALDOR ELECTRIC Co.**

TYPE LC, DV, REV, OIL CAP ACR. LINE, 7 LEADS

CD0016A01