

BALDOR® • RELIANCE

Product Information Packet

L1410T

5HP,1725RPM,1PH,60HZ,184T,3640LC,OPEN,F1

Copyright © All product information within this document is subject to Baldor Electric Company copyright © protection, unless otherwise noted.

Part Detail							
Revision:	D	Status:	PRD/A	Change #:		Proprietary:	No
Type:	AC	Prod. Type:	3640LC	Elec. Spec:	36WGW849	CD Diagram:	
Enclosure:	OPEN	Mfg Plant:		Mech. Spec:	36M925	Layout:	
Frame:	184T	Mounting:	F1	Poles:	04	Created Date:	01-06-2010
Base:	RG	Rotation:	R	Insulation:	F	Eff. Date:	06-08-2012
Leads:	2#10 A PH,2#16 B PH	Literature:		Elec. Diagram:		Replaced By:	

Nameplate NP1256L									
CAT.NO.	L1410T								
SPEC.	36M925W849G1								
HP	5								
VOLTS	230								
AMP	23								
RPM	1725								
FRAME	184T	HZ	60	PH	1				
SER.F.	1.15	CODE	G	DES	L	CLASS	F		
NEMA-NOM-EFF	82.5	PF	87						
RATING	40C AMB-CONT								
CC				USABLE AT 208V	25				
DE	6206	ODE	6205						
ENCL	OPEN	SN							

Parts List		
Part Number	Description	Quantity
SA189553	SA 36M925W849G1	1.000 EA
RA177263	RA 36M925W849G1	1.000 EA
36CB3004	36 CB CASTING W/1.09 DIA LEAD HOLE @ 6:0	1.000 EA
51XB1016A08	10-16X 1/2HXWSSLD SERTYB	2.000 EA
11XW1032G06	10-32 X .38, TAPTITE II, HEX WSHR SLTD U	1.000 EA
36EP3200A01SP	FR ENDPLATE, MACH	1.000 EA
HW4500A01	1641B(ALEMITE)400 UNIV, GREASE FITT	1.000 EA
SP1008A01	BAFFLE, MODEL 36 & 37	1.000 EA
13XF0832A08	8-32 X.50 PAN HD,SLTD, TYPE F SCREW, ZIN	2.000 EA
10XN2520A12	O1/4-20X 3/4 HEX HEAD CAP	2.000 EA
HW5100A05	WVY WSHR F/205 & 304 BRGS	1.000 EA
36EP3201A01	PU ENDPLATE, MACH 182-4T	1.000 EA
HW4500A01	1641B(ALEMITE)400 UNIV, GREASE FITT	1.000 EA
XY2520A12	1/4-20 HEX NUT, DIRECTIONAL SERRATIONS	4.000 EA
36CB4516	36 LIPPED CB LID	1.000 EA
51XW0832A07	8-32 X .44, TAPTITE II, HEX WSHR SLTD SE	4.000 EA
HW2501E16	3KEY, 1/4 SQ X 1.750	1.000 EA
HA7000A02	KEY RETAINER RING, 1 1/8 DIA, 1 3/8 DIA	1.000 EA
85XU0407S04	4X1/4 U DRIVE PIN STAINLESS	2.000 EA
HA6362ZP	LIFTING LUG FOR 36 FRAME MOTORS.	2.000 EA
MJ1000A75	GREASE, POLYREX EM EXXON	0.050 LB
MG1000G27	PAINT- S9282E CHARCOAL GREY	0.022 GA
LB1115	LABEL,LIFTING DEVICE	1.000 EA
HA3101A40	THRUBOLT 1/4-20 X 12.687	4.000 EA

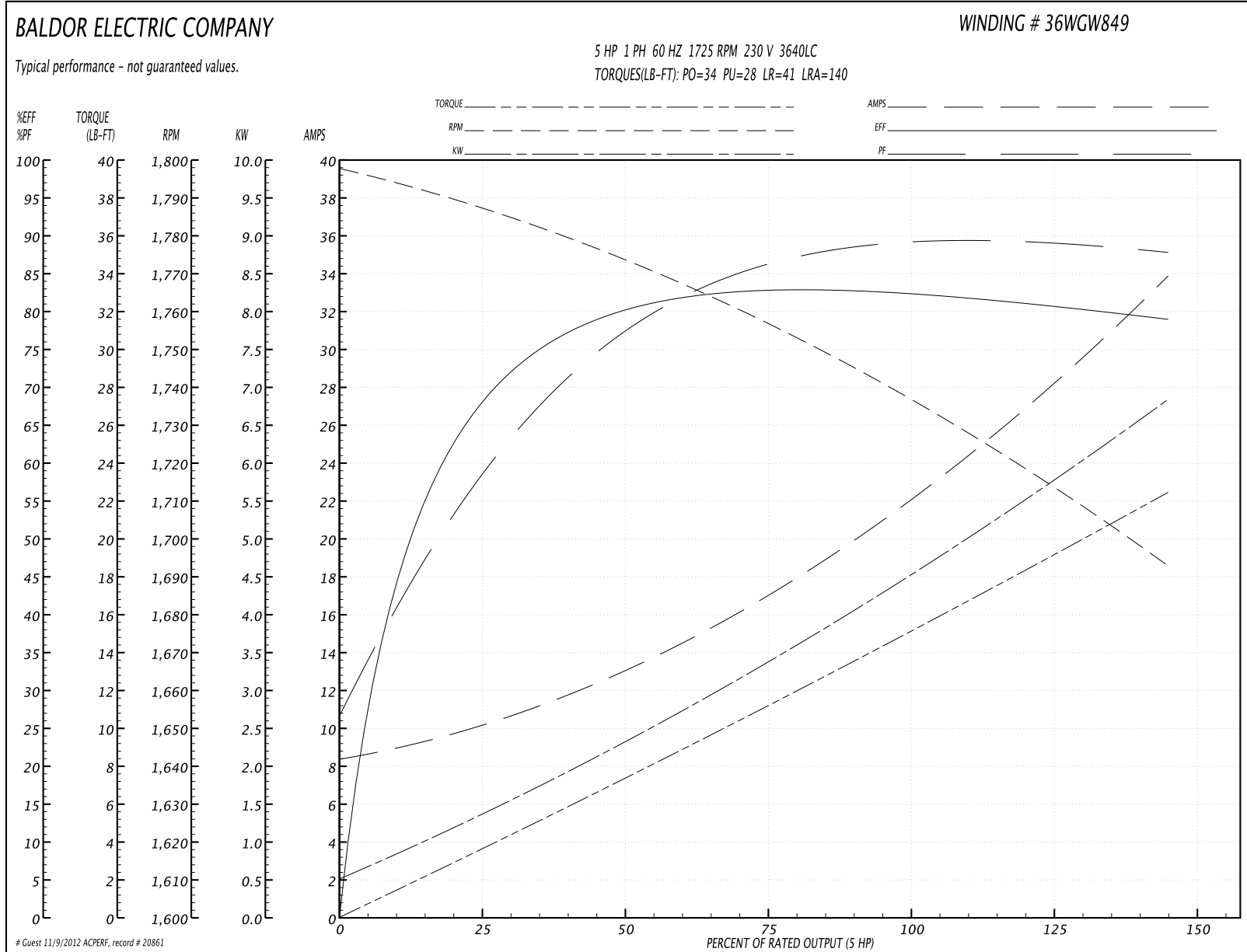
Parts List (continued)		
Part Number	Description	Quantity
36CB5005A03	CAPACITOR BOX KIT, 36CB3800, OC3040F09,	1.000 EA
SP5172A05	37 TYPE L TORQ STAT SWITCH LEAD ASSEMBLY	1.000 EA
LB1119	WARNING LABEL	1.000 EA
LB1125C01	STD (STOCK) CARTON LABEL BALDOR WITH FLA	1.000 EA
LC0017	CONN LABEL-1 PHASE-SINGLE VOLT-REV ROTNO	1.000 EA
NP1256L	ALUM UL CSA CC	1.000 EA
G7PA1000	PACKAGING GROUP / BALDOR	1.000 EA

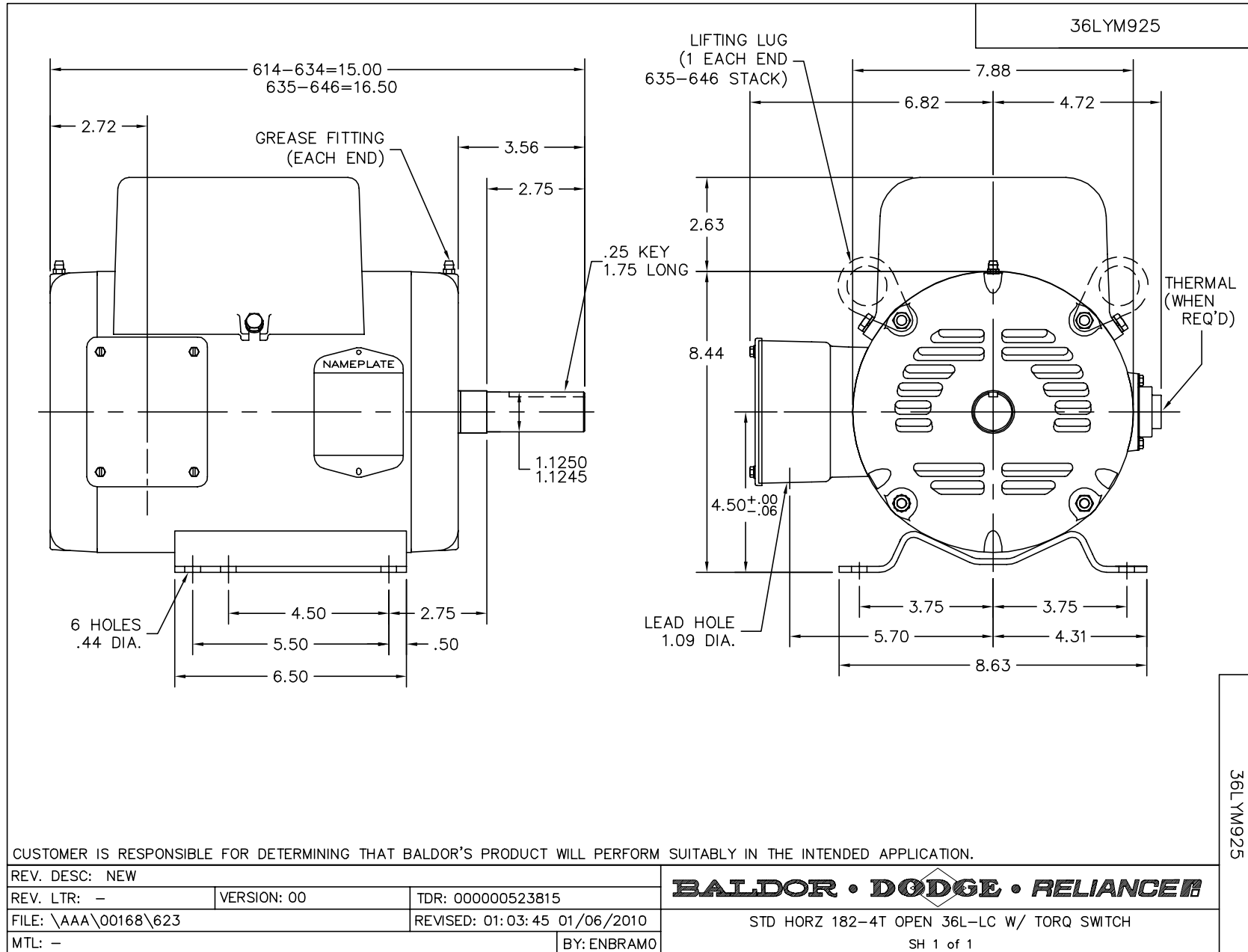
Accessories		
Part Number	Description	Multiplier
36-3403	C FACE KIT	A8
36EP1405A09SP	D-FLANGE KIT	A8

Performance Data at 230V, 60Hz, 5.0HP (Typical performance - Not guaranteed values)

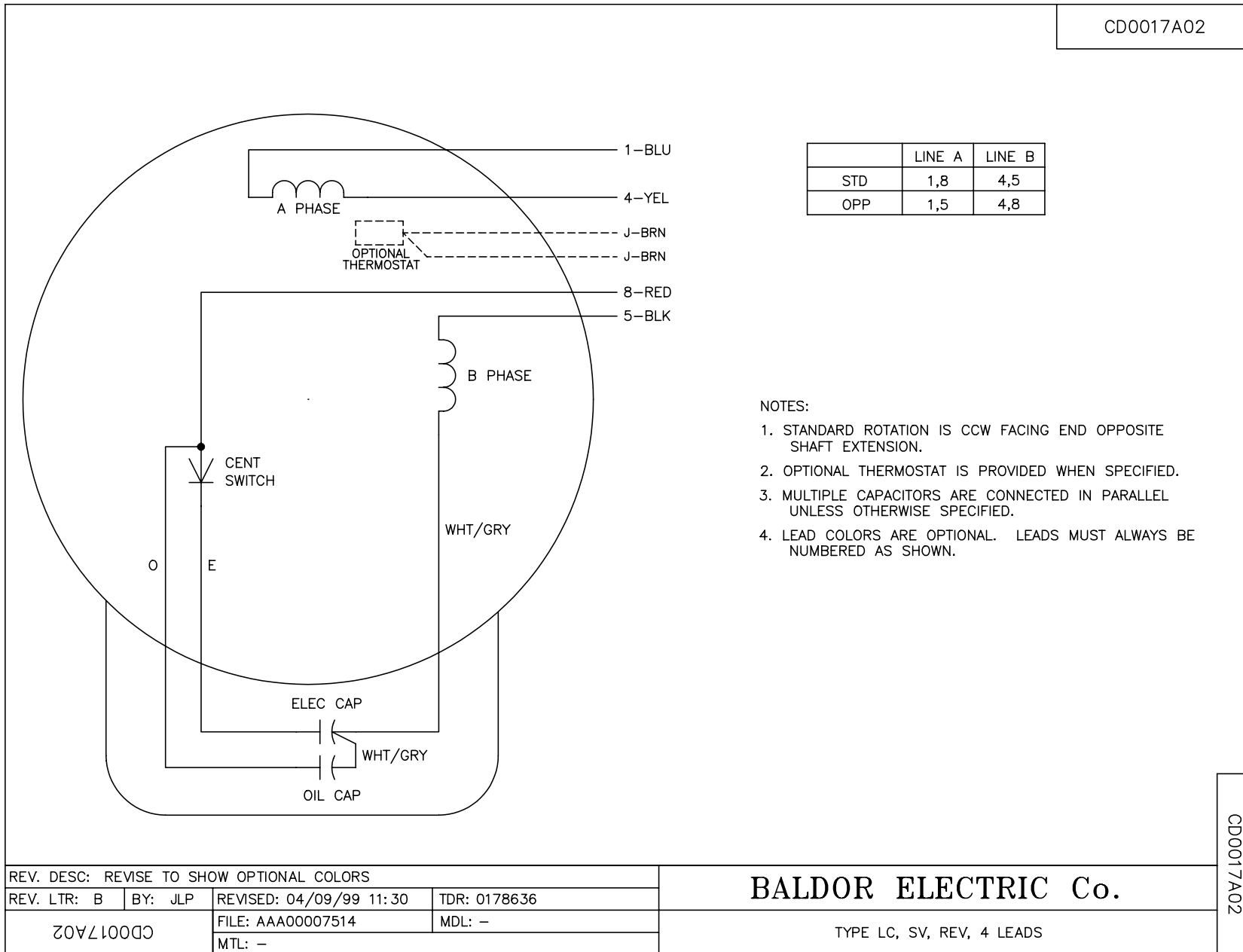
General Characteristics							
Full Load Torque:	15.0 LB-FT			Start Configuration:	DOL		
No-Load Current:	8.4 Amps			Break-Down Torque:	34.0 LB-FT		
Line-line Res. @ 25°C.:	0.45 Ohms A Ph / 1.56 Ohms B Ph			Pull-Up Torque:	28.0 LB-FT		
Temp. Rise @ Rated Load:	90 C			Locked-Rotor Torque:	41.0 LB-FT		
Temp. Rise @ S.F. Load:	110 C			Starting Current:	140.0 Amps		
Load Characteristics							
% of Rated Load	25	50	75	100	125	150	S.F.
Power Factor:	60.0	78.0	86.0	89.0	91.0	91.0	90.0
Efficiency:	67.2	79.2	82.7	83.0	81.5	78.5	82.1
Speed:	1786.0	1772.0	1756.0	1739.0	1718.0	1691.0	1726.0
Line Amperes:	10.1	13.2	17.2	21.9	27.4	34.0	25.2

Performance Graph at 230V, 60Hz, 5.0HP Typical performance - Not guaranteed values





CD0017A02



CD0017A02

REV. DESC: REVISE TO SHOW OPTIONAL COLORS			
REV. LTR: B	BY: JLP	REVISED: 04/09/99 11:30	TDR: 0178636
CD0017A02		FILE: AAA00007514	MDL: -
		MTL: -	

BALDOR ELECTRIC Co.

TYPE LC, SV, REV, 4 LEADS