

BALDOR® • RELIANCE

Product Information Packet

L1430T

5HP,1725RPM,1PH,60HZ,184T,3634LC,ODTF,F1

Copyright © All product information within this document is subject to Baldor Electric Company copyright © protection, unless otherwise noted.

Part Detail							
Revision:	A	Status:	PRD/A	Change #:		Proprietary:	No
Type:	AC	Prod. Type:	3634LC	Elec. Spec:	36WGT077	CD Diagram:	
Enclosure:	ODTF	Mfg Plant:		Mech. Spec:	36M926	Layout:	
Frame:	184T	Mounting:	F1	Poles:	04	Created Date:	01-06-2010
Base:	RG	Rotation:	R	Insulation:	F	Eff. Date:	05-18-2011
Leads:	2#10 A PH,2#16 B PH	Literature:		Elec. Diagram:		Replaced By:	

Nameplate NP1256L									
CAT.NO.	L1430T								
SPEC.	36M926T077G1								
HP	5								
VOLTS	230								
AMP	20.6								
RPM	1725								
FRAME	184T	HZ			60	PH	1		
SER.F.	1.15	CODE			H	DES	L	CLASS	F
NEMA-NOM-EFF	84	PF			94				
RATING	40C AMB-CONT								
CC				USABLE AT 208V	22.7				
DE	6206	ODE			6205				
ENCL	ODTF	SN							

Parts List		
Part Number	Description	Quantity
SA189555	SA 36M926T077G1	1.000 EA
RA177265	RA 36M926T077G1	1.000 EA
36CB3004	36 CB CASTING W/1.09 DIA LEAD HOLE @ 6:0	1.000 EA
51XB1016A08	10-16X 1/2HXWSSLD SERTYB	2.000 EA
11XW1032G06	10-32 X .38, TAPTITE II, HEX WSHR SLTD U	1.000 EA
36EP3200A03	SPL FR ENDPLATE -OPEN- FOR EXT FAN & DRI	1.000 EA
HW4500A01	1641B(ALEMITE)400 UNIV, GREASE FITT	1.000 EA
SP1008A01	BAFFLE, MODEL 36 & 37	1.000 EA
13XF0832A08	8-32 X.50 PAN HD,SLTD, TYPE F SCREW, ZIN	2.000 EA
10XN2520A12	O1/4-20X 3/4 HEX HEAD CAP	2.000 EA
HW5100A05	WVY WSHR F/205 & 304 BRGS	1.000 EA
36EP3201A01	PU ENDPLATE, MACH 182-4T	1.000 EA
HW4500A01	1641B(ALEMITE)400 UNIV, GREASE FITT	1.000 EA
XY2520A12	1/4-20 HEX NUT, DIRECTIONAL SERRATIONS	4.000 EA
51XB1214A16	12-14X1.00 HXWSSLD SERTYB	1.000 EA
36FH4012A01	DRIP COVER NOTCH BOTTOM, W/ AUTOPHERETIC	1.000 EA
51XW1032A06	10-32 X .38, TAPTITE II, HEX WSHR SLTD S	3.000 EA
36CB4516	36 LIPPED CB LID	1.000 EA
51XW0832A07	8-32 X .44, TAPTITE II, HEX WSHR SLTD SE	4.000 EA
HW2501E16	3KEY, 1/4 SQ X 1.750	1.000 EA
HA7000A02	KEY RETAINER RING, 1 1/8 DIA, 1 3/8 DIA	1.000 EA
85XU0407S04	4X1/4 U DRIVE PIN STAINLESS	2.000 EA
MJ1000A75	GREASE, POLYREX EM EXXON	0.050 LB
36FN3000A01SP	EXFN, PLASTIC, 7.00 OD, .912 ID	1.000 EA

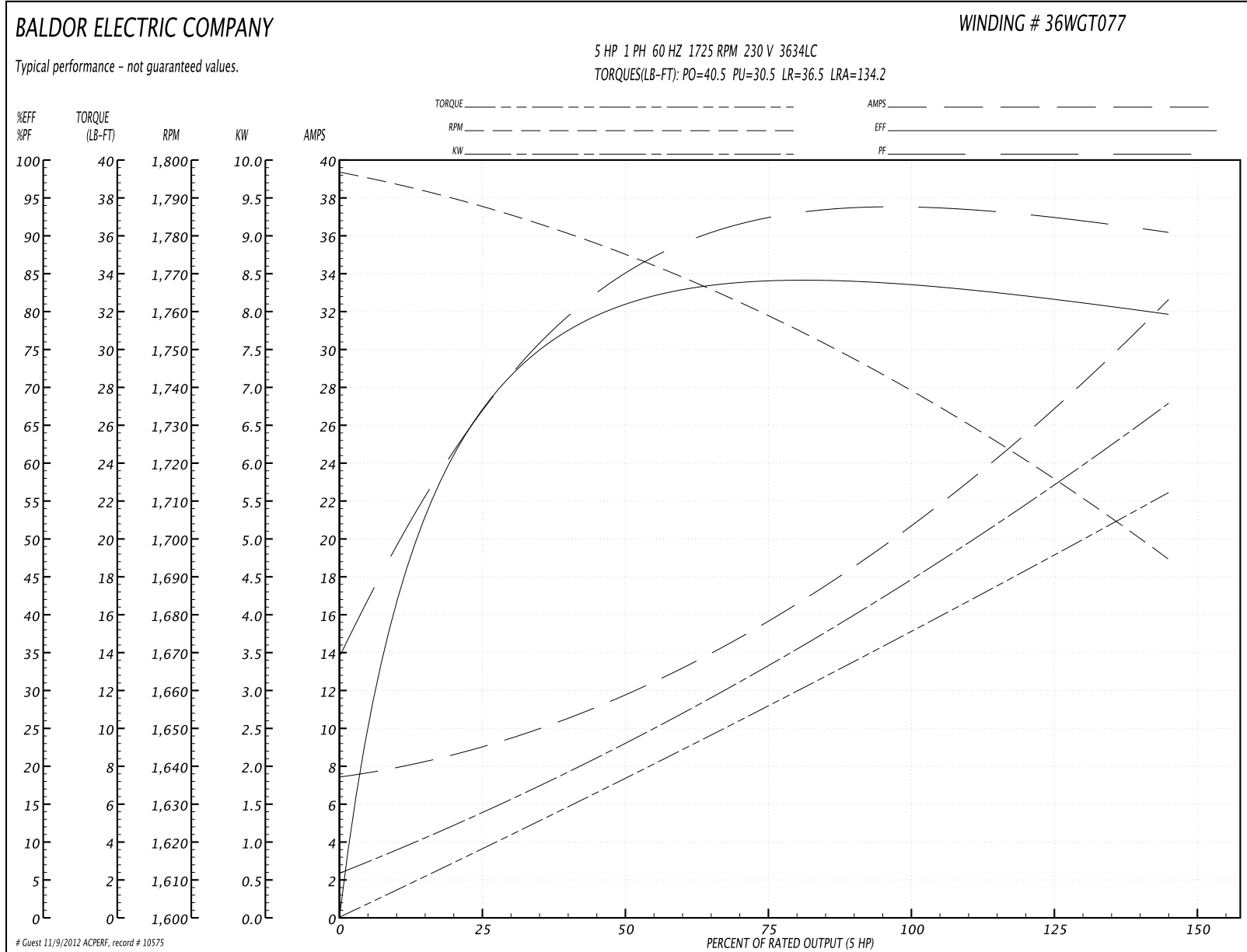
Parts List (continued)		
Part Number	Description	Quantity
MG1000G27	PAINT- S9282E CHARCOAL GREY	0.022 GA
WD1000A15	3-520132-2 AMP FLAG (4M/RL NON-CANC/NON-	6.000 EA
HA3101A25	THRUBOLT 1/4-20 X 11.000 OHIO ROD	4.000 EA
36CB5005A01	CAPACITOR BOX KIT, 36CB3800, OC3060F10,	1.000 EA
SP5172A05	37 TYPE L TORQ STAT SWITCH LEAD ASSEMBLY	1.000 EA
LB1119	WARNING LABEL	1.000 EA
LB1125C01	STD (STOCK) CARTON LABEL BALDOR WITH FLA	1.000 EA
LC0017	CONN LABEL-1 PHASE-SINGLE VOLT-REV ROTNO	1.000 EA
NP1256L	ALUM UL CSA CC	1.000 EA
G7PA1000	PACKAGING GROUP / BALDOR	1.000 EA

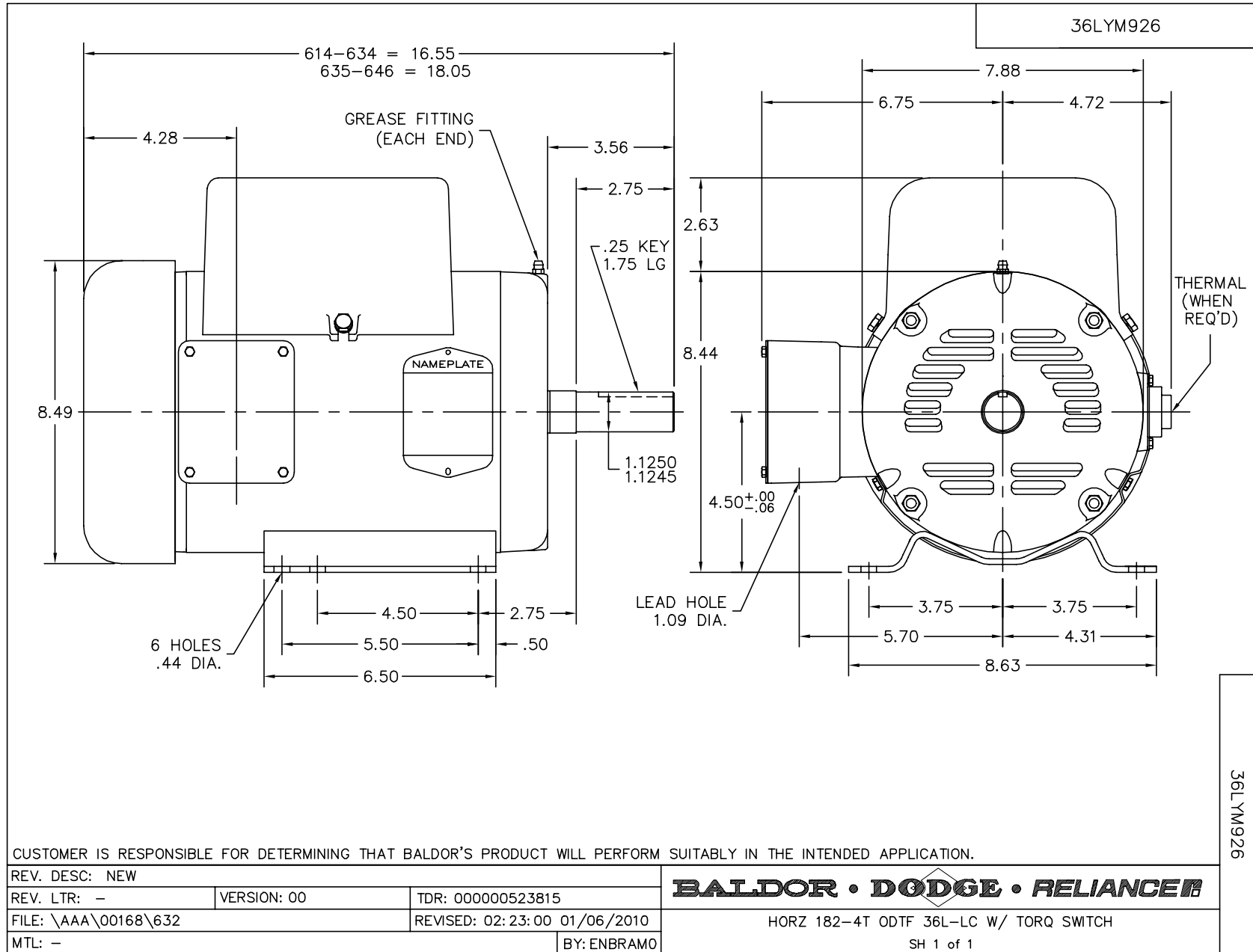
Accessories		
Part Number	Description	Multiplier
36-3403	C FACE KIT	A8
36EP1405A09SP	D-FLANGE KIT	A8

Performance Data at 230V, 60Hz, 5.0HP (Typical performance - Not guaranteed values)

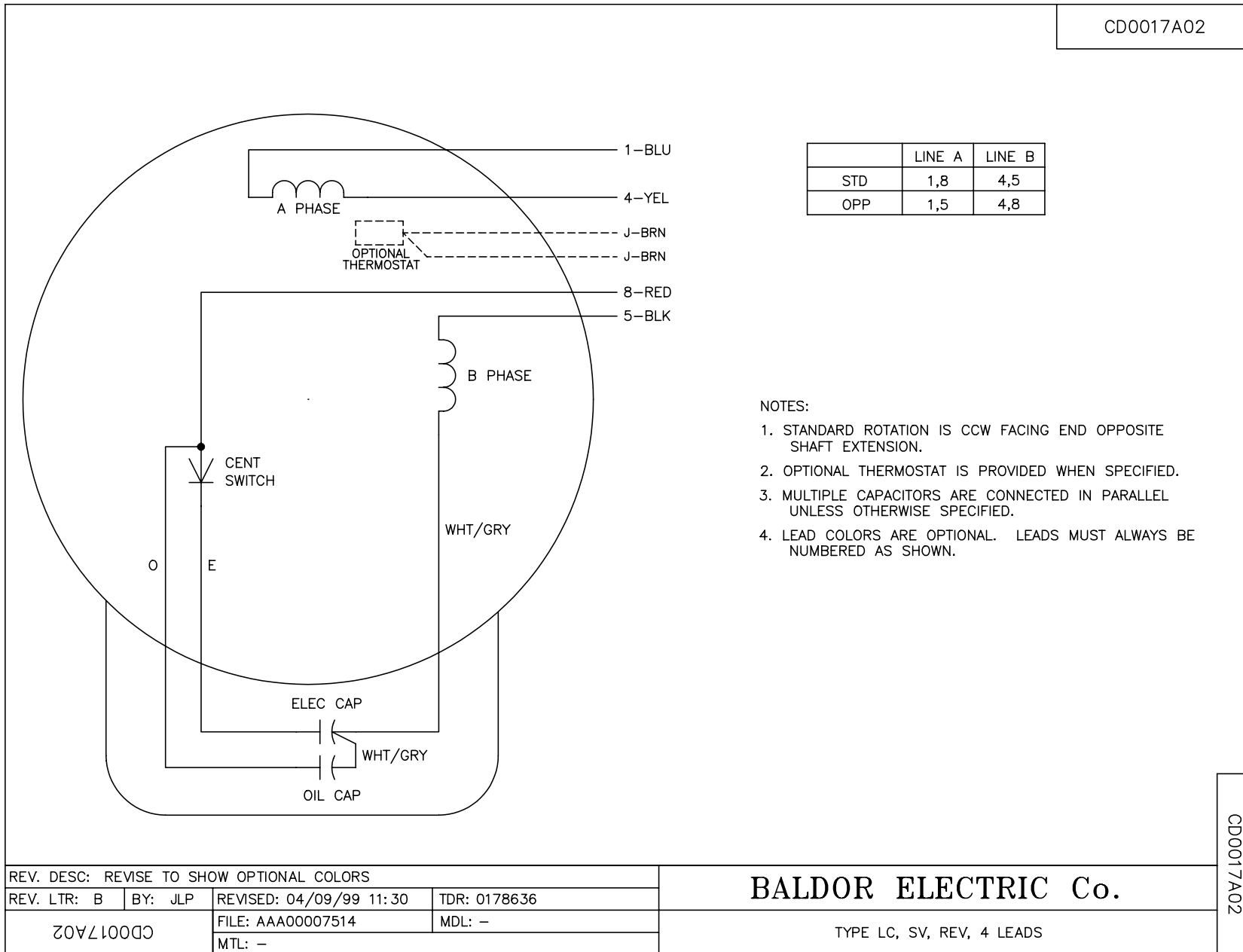
General Characteristics							
Full Load Torque:	15.0 LB-FT			Start Configuration:	DOL		
No-Load Current:	7.49 Amps			Break-Down Torque:	40.5 LB-FT		
Line-line Res. @ 25°C.:	0.4981 Ohms A Ph / 1.6049 Ohms B Ph			Pull-Up Torque:	30.5 LB-FT		
Temp. Rise @ Rated Load:	60 C			Locked-Rotor Torque:	36.5 LB-FT		
Temp. Rise @ S.F. Load:	74 C			Starting Current:	134.2 Amps		
Load Characteristics							
% of Rated Load	25	50	75	100	125	150	S.F.
Power Factor:	70.0	86.0	91.0	94.0	94.0	94.0	94.0
Efficiency:	66.0	79.7	83.8	84.4	82.7	79.0	83.4
Speed:	1785.0	1773.0	1759.0	1741.0	1721.0	1692.0	1729.0
Line Amperes:	8.87	11.94	15.93	20.56	25.99	32.81	23.82

Performance Graph at 230V, 60Hz, 5.0HP Typical performance - Not guaranteed values





CD0017A02



CD0017A02

REV. DESC: REVISE TO SHOW OPTIONAL COLORS			
REV. LTR: B	BY: JLP	REVISED: 04/09/99 11:30	TDR: 0178636
CD0017A02		FILE: AAA00007514	MDL: -
		MTL: -	

BALDOR ELECTRIC Co.

TYPE LC, SV, REV, 4 LEADS