

# **BALDOR**® • **RELIANCE**

## **Product Information Packet**

# **L1508T-50**

**5HP,1455RPM,1PH,50HZ,213T,3730LC,OPSB,F1**

Copyright © All product information within this document is subject to Baldor Electric Company copyright © protection, unless otherwise noted.

Part Detail							
Revision:	F	Status:	PRD/A	Change #:		Proprietary:	No
Type:	AC	Prod. Type:	3730LC	Elec. Spec:	37WGT917	CD Diagram:	
Enclosure:	OPSB	Mfg Plant:		Mech. Spec:	37K214	Layout:	
Frame:	213T	Mounting:	F1	Poles:	04	Created Date:	08-02-2006
Base:	RG	Rotation:	R	Insulation:	B	Eff. Date:	01-07-2010
Leads:	2#14 A PH,2#14 B PH	Literature:		Elec. Diagram:		Replaced By:	

Nameplate NP1256L									
CAT.NO.	L1508T-50								
SPEC.	37K214T917								
HP	5								
VOLTS	220								
AMP	21.6								
RPM	1455								
FRAME	213T	HZ			50	PH	1		
SER.F.	1.00	CODE			F	DES	L	CLASS	B
NEMA-NOM-EFF	82.5	PF			94				
RATING	40C AMB-CONT								
CC				USABLE AT 208V					
DE	6307	ODE			6206				
ENCL	OPSB	SN							

Parts List		
Part Number	Description	Quantity
SA146327	SA 37K214T917	1.000 EA
RA135412	RA 37K214T917	1.000 EA
OC3060F10SP	CYL OIL CAP 60MFD/370V	1.000 EA
EC1216C06SP	ELEC CAP, 216-259 MFD, 250V, 2.06D X 4.	2.000 EA
HA6361A01	LIFTING LUG FOR 37, 39 & 40 FRAME (AUTOP	2.000 EA
37CB3006	37 CB CASTING W/1.38 LEAD HOLE @ 6:00	1.000 EA
51XW2520A10	.25-20 X .62, TAPTITE II, HEX WSHR SLTD	2.000 EA
11XW1032G06	10-32 X .38, TAPTITE II, HEX WSHR SLTD U	1.000 EA
37EP3200A01SP	FR ENDPLATE, 37L&M, OPEN, MACH, W/GREASE	1.000 EA
HW4500A01	1641B(ALEMITE)400 UNIV, GREASE FITT	1.000 EA
37AD2005	BAFFLE PLATE, FOR OPSB 1 PHASE	1.000 EA
SP1008A01	BAFFLE, MODEL 36 & 37	1.000 EA
13XT0832A07	8-32X7/16 TYP 23 PAN HD SLT DX	2.000 EA
10XN2520A10	1/4-20X 5/8 HEX HD X	2.000 EA
HW1001A25	LOCKWASHER 1/4, ZINC PLT .493 OD, .255 I	2.000 EA
HW5100A06	W2420-025 WVY WSHR (WB)	1.000 EA
37EP3201A01	PU ENDPLATE, MACH 213-5T	1.000 EA
HW4500A01	1641B(ALEMITE)400 UNIV, GREASE FITT	1.000 EA
XY3118A12	5/16-18 HEX NUT DIRECTIONAL SERRATION	4.000 EA
37CB4516	LIPPED LID FOR 37 FRAME NEC KOBX	1.000 EA
51XW0832A07	8-32 X .44, TAPTITE II, HEX WSHR SLTD SE	4.000 EA
HW2501F21	KEY, 5/16 SQ X 2.375	1.000 EA
HA7000A02	KEY RETAINER RING, 1 1/8 DIA, 1 3/8 DIA	1.000 EA
85XU0407S04	4X1/4 U DRIVE PIN STAINLESS	2.000 EA

Parts List (continued)		
Part Number	Description	Quantity
LB1115	LABEL,LIFTING DEVICE	1.000 EA
37CB3802SP	CAPACITOR COVER, CAST	1.000 EA
HA7010A01	CAPACITOR RETENTION CLAMP, 6.562 LONG	1.000 EA
WD1000A15	3-520132-2 AMP FLAG (4M/RL NON-CANC/NON-	6.000 EA
MJ1000A75	GREASE, POLYREX EM EXXON	0.050 LB
MG1000G27	PAINT- S9282E CHARCOAL GREY	0.028 GA
SP5064A02	MODEL 37 TYPE LC STATIONARY SWITCH LEAD	1.000 EA
37AD2001A01	BAFFLE PLATE, STAMPED	1.000 EA
HA3104A39	THRUBOLT-5/16-18 X 12.250	4.000 EA
LB1119	WARNING LABEL	1.000 EA
LB1125C01	STD (STOCK) CARTON LABEL BALDOR WITH FLA	1.000 EA
LC0017	CONN LABEL-1 PHASE-SINGLE VOLT-REV ROTNO	1.000 EA
NP1256L	ALUM UL CSA CC	1.000 EA
36PA1001	PACKAGING GROUP	1.000 EA

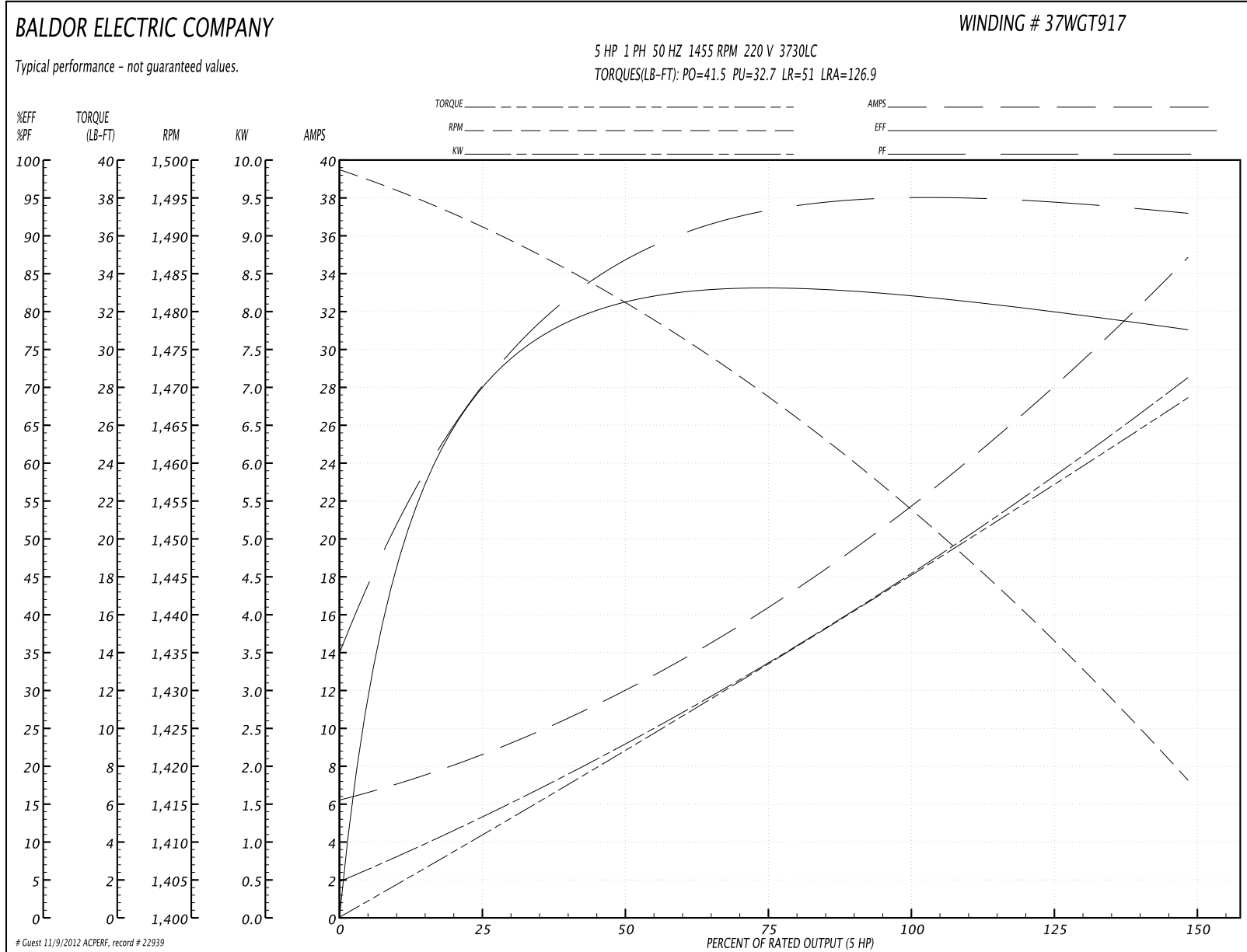
Accessories		
Part Number	Description	Multiplier
37-1404	C FACE KIT	A8

**Performance Data at 220V, 50Hz, 5.0HP (Typical performance - Not guaranteed values)**

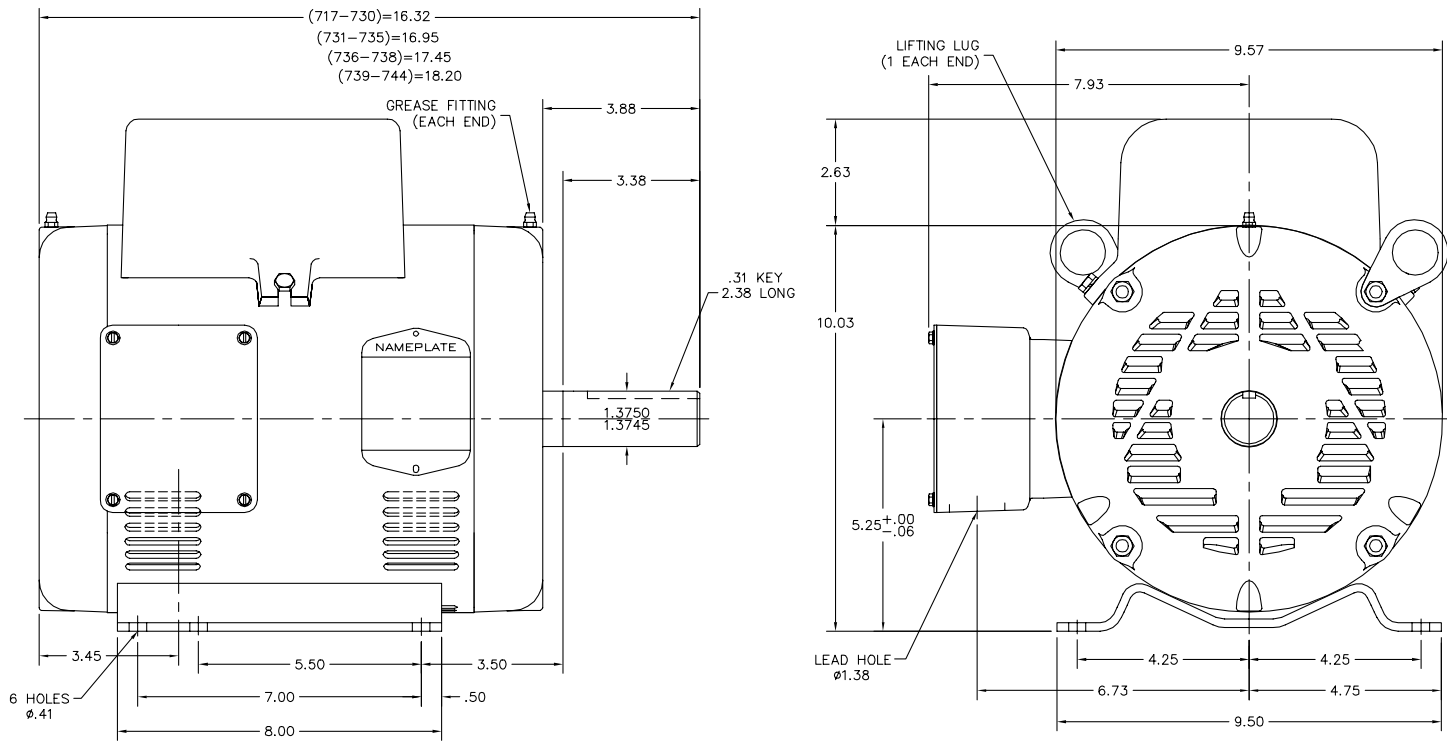
General Characteristics			
Full Load Torque:	17.9 LB-FT	Start Configuration:	DOL
No-Load Current:	6.41 Amps	Break-Down Torque:	41.5 LB-FT
Line-line Res. @ 25°C.:	0.429 Ohms A Ph / 1.37 Ohms B Ph	Pull-Up Torque:	32.7 LB-FT
Temp. Rise @ Rated Load:	50 C	Locked-Rotor Torque:	51.0 LB-FT
Temp. Rise @ S.F. Load:		Starting Current:	126.9 Amps

Load Characteristics							
% of Rated Load	25	50	75	100	125	150	S.F.
Power Factor:	74.0	88.0	92.0	94.0	94.0	93.0	0.0
Efficiency:	67.3	80.2	82.7	83.0	80.9	77.1	0.0
Speed:	1492.0	1480.0	1469.0	1455.0	1439.0	1417.0	0.0
Line Amperes:	8.17	11.9	16.4	21.6	27.6	34.9	0.0

Performance Graph at 220V, 50Hz, 5.0HP Typical performance - Not guaranteed values



37LYK214



37LYK214

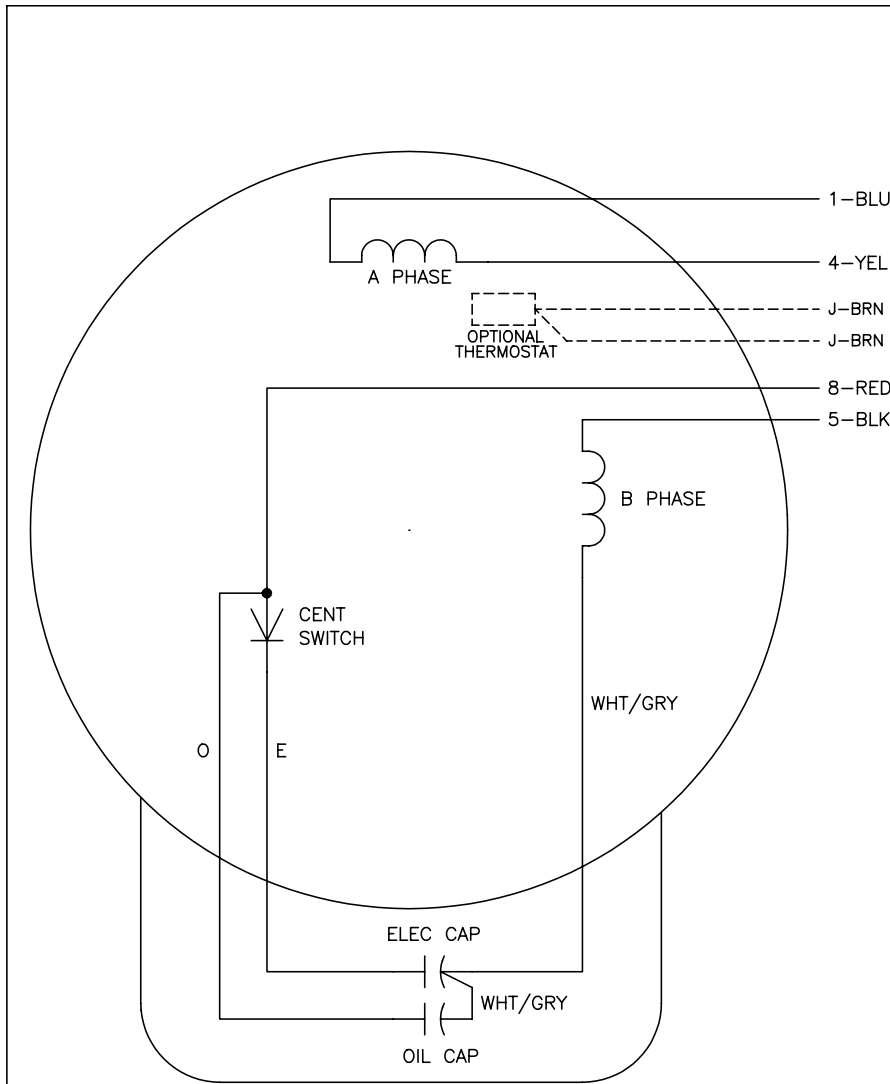
CUSTOMER IS RESPONSIBLE FOR DETERMINING THAT MOTOR PERFORMANCE IS SUITABLE IN THE APPLICATION.

REV. DESC: RELEASE TO PRODUCTION		
REV. LTR: B	VERSION: 02	TDR: 000000395829
FILE: \AAA\00134\499	REVISED: 14:46:42 06/21/2006	BY: ENJASF0
MTL: -		

**BALDOR ELECTRIC Co.**  
STD HORZ NEMA 213T-215T OPSB 37L-LC



CD0017A02



	LINE A	LINE B
STD	1,8	4,5
OPP	1,5	4,8

NOTES:

1. STANDARD ROTATION IS CCW FACING END OPPOSITE SHAFT EXTENSION.
2. OPTIONAL THERMOSTAT IS PROVIDED WHEN SPECIFIED.
3. MULTIPLE CAPACITORS ARE CONNECTED IN PARALLEL UNLESS OTHERWISE SPECIFIED.
4. LEAD COLORS ARE OPTIONAL. LEADS MUST ALWAYS BE NUMBERED AS SHOWN.

REV. DESC: REVISE TO SHOW OPTIONAL COLORS			
REV. LTR: B	BY: JLP	REVISED: 04/09/99 11:30	TDR: 0178636
CD0017A02		FILE: AAA00007514	MDL: -
		MTL: -	

**BALDOR ELECTRIC Co.**

TYPE LC, SV, REV, 4 LEADS

CD0017A02