

BALDOR® • **RELIANCE**

Product Information Packet

L1509T

7.5HP,3450RPM,1PH,60HZ,213T,3640LC,OPEN

Copyright © All product information within this document is subject to Baldor Electric Company copyright © protection, unless otherwise noted.

Part Detail							
Revision:	P	Status:	PRD/A	Change #:		Proprietary:	No
Type:	AC	Prod. Type:	3640LC	Elec. Spec:	36WGY373	CD Diagram:	
Enclosure:	ODTF	Mfg Plant:		Mech. Spec:	36H282	Layout:	
Frame:	213T	Mounting:	F1	Poles:	02	Created Date:	
Base:	RG	Rotation:	R	Insulation:	F	Eff. Date:	05-02-2012
Leads:	2#10 A PH,2#16 B PH	Literature:		Elec. Diagram:		Replaced By:	

Nameplate NP1256L

CAT.NO.	L1509T						
SPEC.	36H282Y373G2						
HP	7.5						
VOLTS	230						
AMP	30						
RPM	3450						
FRAME	213T	HZ	60	PH	1		
SER.F.	1.15	CODE	H	DES	L	CLASS	F
NEMA-NOM-EFF	82.5	PF	96				
RATING	40C AMB-CONT						
CC		USABLE AT 208V	33				
DE	6207	ODE	6205				
ENCL	ODTF	SN					

Parts List		
Part Number	Description	Quantity
SA036318	SA 36H282Y373G2	1.000 EA
RA032344	RA 36H282Y373G2	1.000 EA
OC3050F09SP	CYL OIL CAP 50MFD/370V	1.000 EA
EC4270C06	ELEC CAP, 270-324 MFD, 250V, 2.06D X 4.	2.000 EA
36CB3004	36 CB CASTING W/1.09 DIA LEAD HOLE @ 6:0	1.000 EA
51XB1016A08	10-16X 1/2HXWSSLD SERTYB	2.000 EA
11XW1032G06	10-32 X .38, TAPTITE II, HEX WSHR SLTD U	1.000 EA
HW3001B01	003SS CUP WASHER, FOR #8 SCREW	1.000 EA
36EP3200A03	SPL FR ENDPLATE -OPEN- FOR EXT FAN & DRI	1.000 EA
HW4500A01	1641B(ALEMITE)400 UNIV, GREASE FITT	1.000 EA
13XF0832A08	8-32 X.50 PAN HD,SLTD, TYPE F SCREW, ZIN	2.000 EA
SP1008A01	BAFFLE, MODEL 36 & 37	1.000 EA
36CB3800SP	CAPACITOR COVER, CAST	1.000 EA
10XN2520A12	O1/4-20X 3/4 HEX HEAD CAP	2.000 EA
HW5100A05	WVY WSHR F/205 & 304 BRGS	1.000 EA
36EP3203A01	PULLEY ENDPLATE 36 FRAME OPEN 207 BRGW/G	1.000 EA
HW4500A01	1641B(ALEMITE)400 UNIV, GREASE FITT	1.000 EA
HA3101A40	THRUBOLT 1/4-20 X 12.687	4.000 EA
XY2520A12	1/4-20 HEX NUT, DIRECTIONAL SERRATIONS	4.000 EA
51XB1214A16	12-14X1.00 HXWSSLD SERTYB	1.000 EA
36FH4012A01	DRIP COVER NOTCH BOTTOM, W/ AUTOPHERETIC	1.000 EA
51XW1032A06	10-32 X .38, TAPTITE II, HEX WSHR SLTD S	3.000 EA
36CB4516	36 LIPPED CB LID	1.000 EA
51XW0832A07	8-32 X .44, TAPTITE II, HEX WSHR SLTD SE	4.000 EA

Parts List (continued)		
Part Number	Description	Quantity
HW2501F21	KEY, 5/16 SQ X 2.375	1.000 EA
HA7000A02	KEY RETAINER RING, 1 1/8 DIA, 1 3/8 DIA	1.000 EA
85XU0407S04	4X1/4 U DRIVE PIN STAINLESS	2.000 EA
HA7010A01	CAPACITOR RETENTION CLAMP, 6.562 LONG	1.000 EA
MJ1000A75	GREASE, POLYREX EM EXXON	0.050 LB
36FN3000A01SP	EXFN, PLASTIC, 7.00 OD, .912 ID	1.000 EA
MG1000G27	PAINT- S9282E CHARCOAL GREY	0.022 GA
WD1000A15	3-520132-2 AMP FLAG (4M/RL NON-CANC/NON-	6.000 EA
SP5064A01	MODEL 36 TYPE LC STATIONARY SWITCH LEAD	1.000 EA
LB1119	WARNING LABEL	1.000 EA
LB1125C01	STD (STOCK) CARTON LABEL BALDOR WITH FLA	1.000 EA
LC0017	CONN LABEL-1 PHASE-SINGLE VOLT-REV ROTNO	1.000 EA
NP1256L	ALUM UL CSA CC	1.000 EA
36PA1001	PACKAGING GROUP	1.000 EA

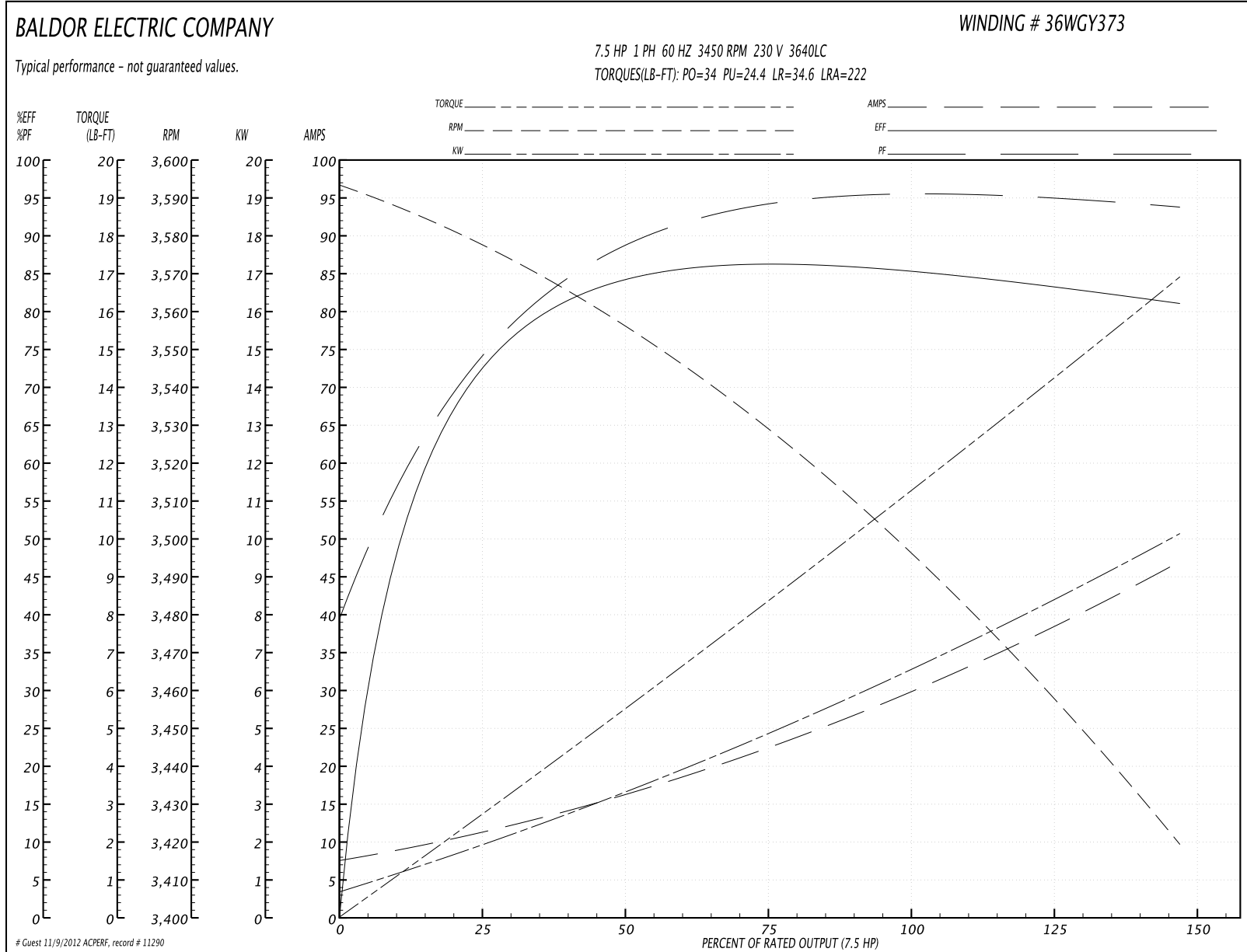
Accessories		
Part Number	Description	Multiplier
36-1206B	C FACE KIT 213-5TC ODP	A8

Performance Data at 230V, 60Hz, 7.5HP (Typical performance - Not guaranteed values)

General Characteristics			
Full Load Torque:	11.3 LB-FT	Start Configuration:	DOL
No-Load Current:	7.4 Amps	Break-Down Torque:	34.0 LB-FT
Line-line Res. @ 25°C.:	0.259 Ohms A Ph / 0.904 Ohms B Ph	Pull-Up Torque:	24.4 LB-FT
Temp. Rise @ Rated Load:		Locked-Rotor Torque:	34.6 LB-FT
Temp. Rise @ S.F. Load:		Starting Current:	222.0 Amps

Load Characteristics							
% of Rated Load	25	50	75	100	125	150	S.F.
Power Factor:	77.0	87.0	95.0	95.0	96.0	94.0	96.0
Efficiency:	71.4	83.2	85.3	86.3	84.5	80.3	85.2
Speed:	3580.0	3549.0	3527.0	3498.0	3465.0	3415.0	3478.0
Line Amperes:	11.3	17.1	22.7	29.9	37.3	47.6	34.3

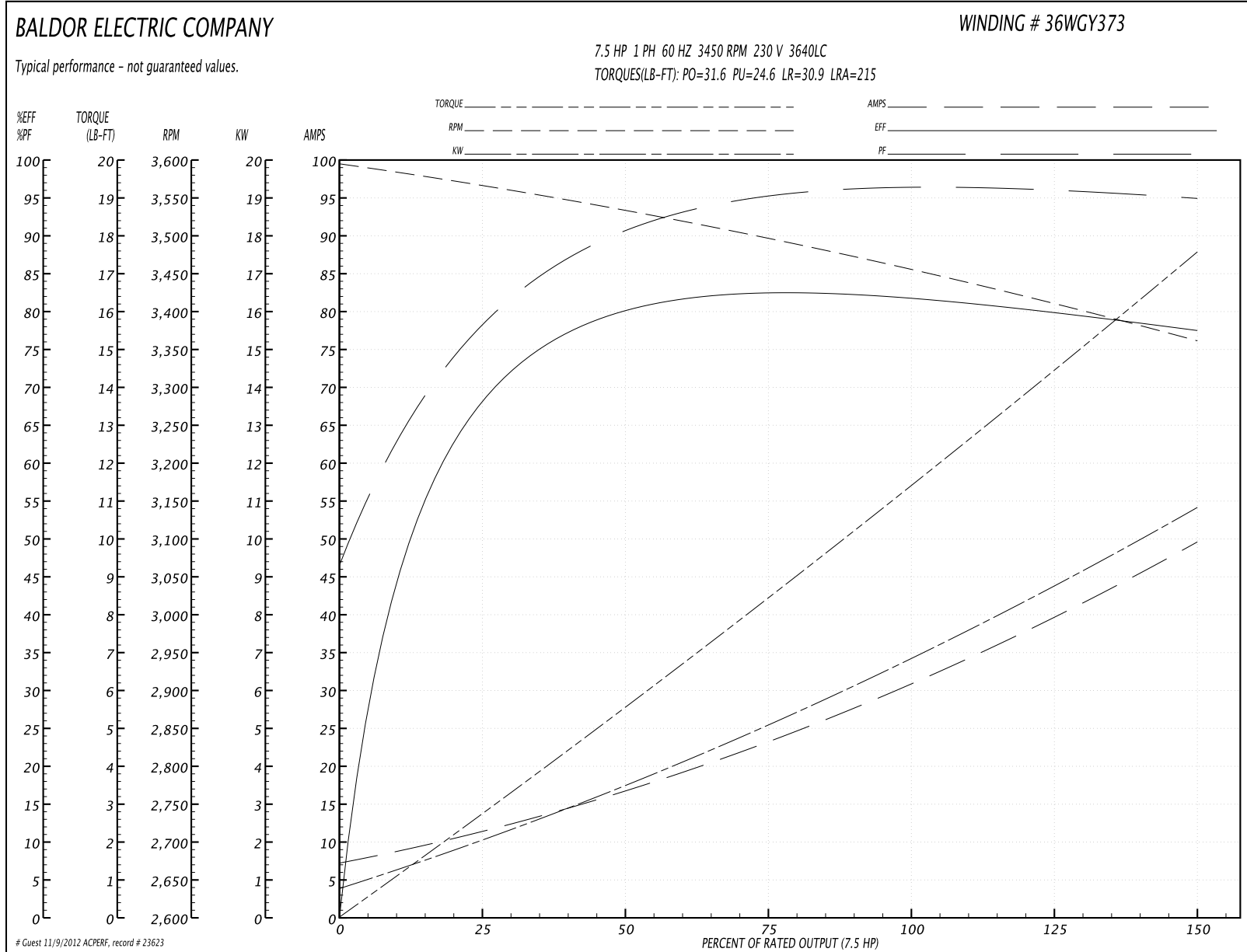
Performance Graph at 230V, 60Hz, 7.5HP Typical performance - Not guaranteed values

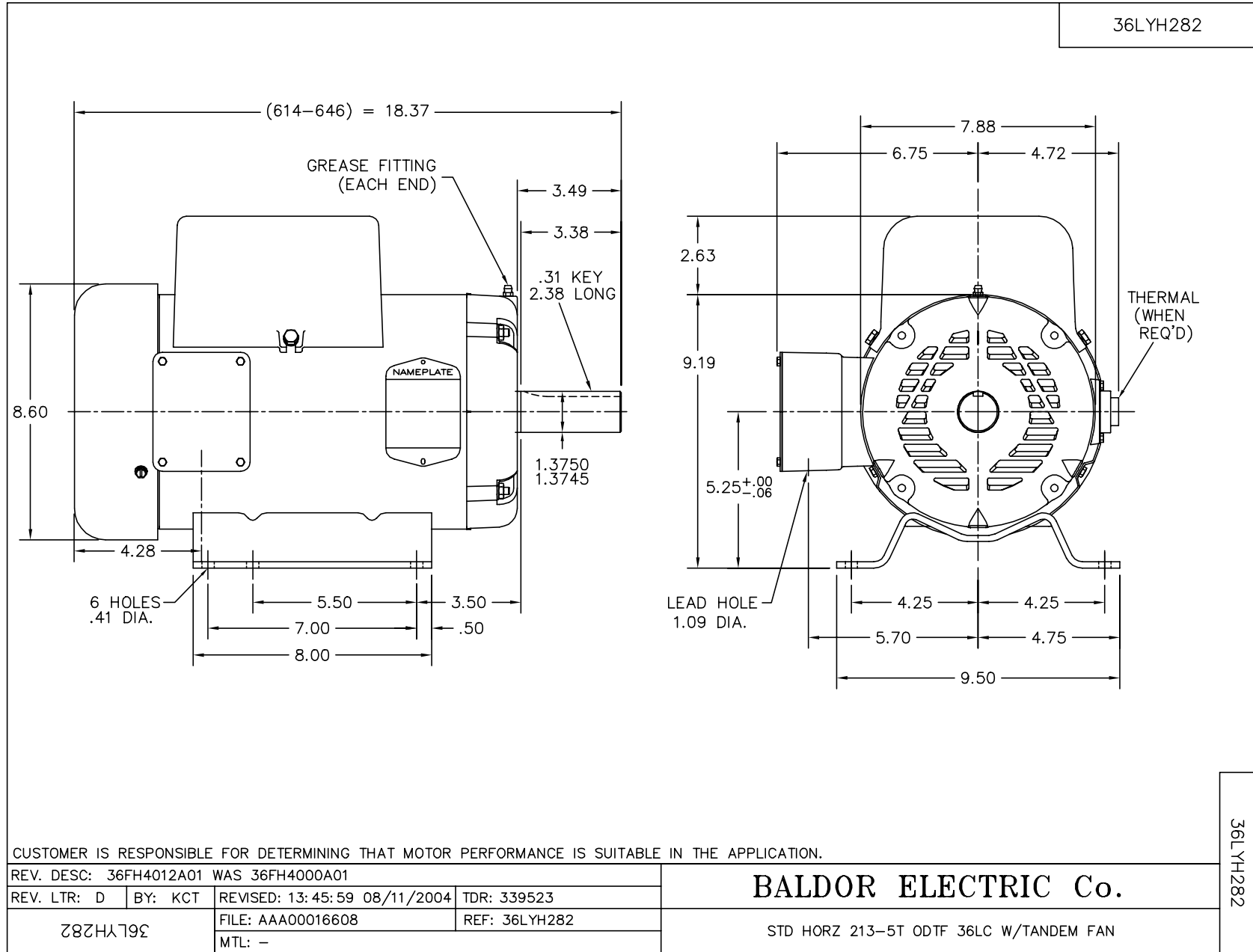


Performance Data at 230V, 60Hz, 7.5HP (Typical performance - Not guaranteed values)

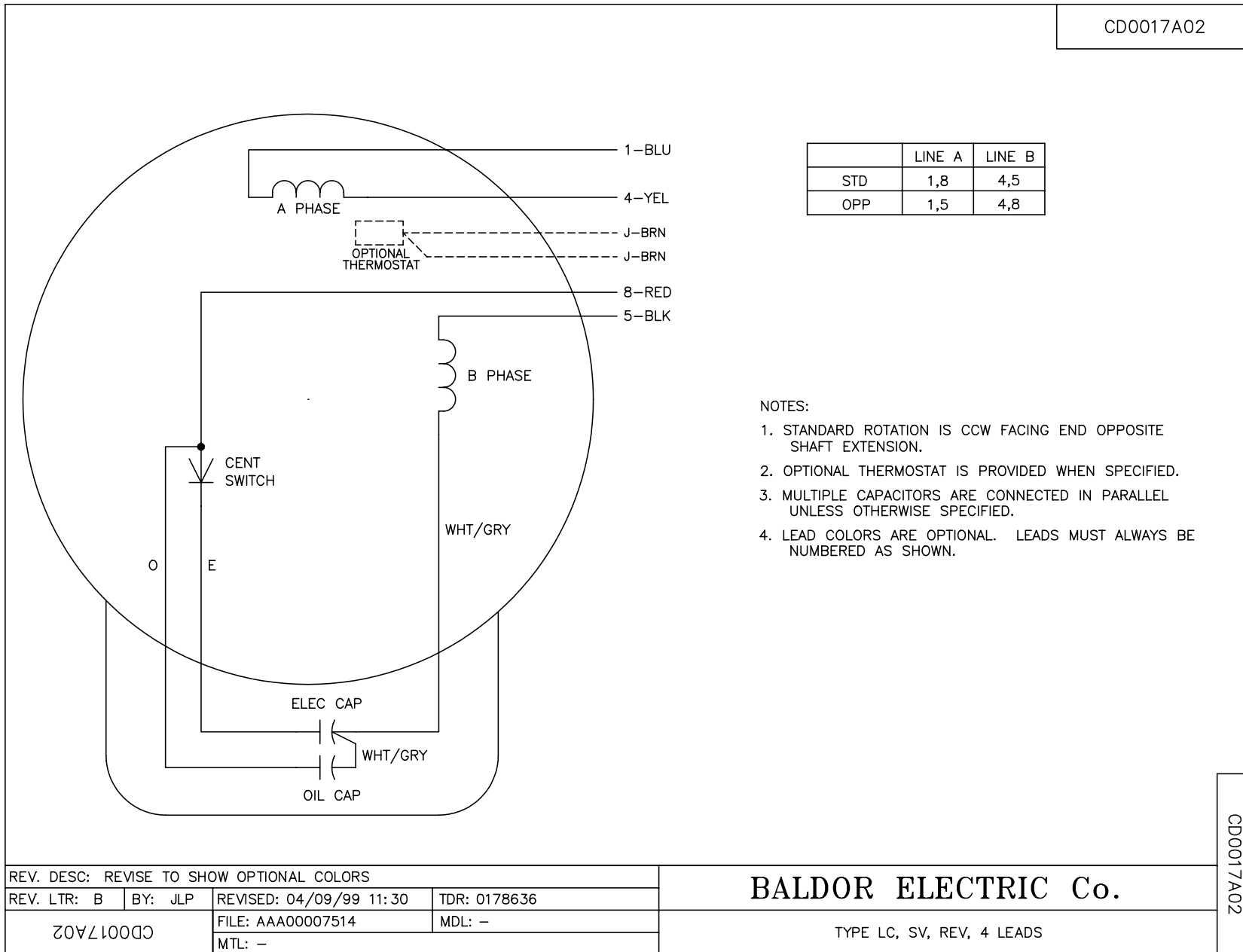
General Characteristics							
Full Load Torque:	11.4 LB-FT			Start Configuration:	DOL		
No-Load Current:	7.35 Amps			Break-Down Torque:	31.6 LB-FT		
Line-line Res. @ 25°C.:	0.25 Ohms A Ph / 0.881 Ohms B Ph			Pull-Up Torque:	24.6 LB-FT		
Temp. Rise @ Rated Load:	60 C			Locked-Rotor Torque:	30.9 LB-FT		
Temp. Rise @ S.F. Load:	74 C			Starting Current:	215.0 Amps		
Load Characteristics							
% of Rated Load	25	50	75	100	125	150	S.F.
Power Factor:	82.0	92.0	94.0	96.0	96.0	96.0	96.0
Efficiency:	65.8	78.7	82.9	82.0	80.4	77.2	81.0
Speed:	3562.0	3531.0	3498.0	3458.0	3413.0	3358.0	3431.0
Line Amperes:	11.1	16.7	23.3	31.1	39.6	49.7	36.2

Performance Graph at 230V, 60Hz, 7.5HP Typical performance - Not guaranteed values





CD0017A02



CD0017A02

REV. DESC: REVISE TO SHOW OPTIONAL COLORS			
REV. LTR: B	BY: JLP	REVISED: 04/09/99 11:30	TDR: 0178636
CD0017A02		FILE: AAA00007514	MDL: -
		MTL: -	

BALDOR ELECTRIC Co.

TYPE LC, SV, REV, 4 LEADS