

# **BALDOR® • RELIANCE**

## **Product Information Packet**

### **L3403**

**.25HP, 1725RPM, 1PH, 60HZ, 48, 3411L, TEFC, F1**

Copyright © All product information within this document is subject to Baldor Electric Company copyright © protection, unless otherwise noted.

Part Detail							
Revision:	Y	Status:	PRD/A	Change #:		Proprietary:	No
Type:	AC	Prod. Type:	3411L	Elec. Spec:	34WG5506	CD Diagram:	
Enclosure:	TEFC	Mfg Plant:		Mech. Spec:	34C051	Layout:	
Frame:	48	Mounting:	F1	Poles:	04	Created Date:	
Base:	RG	Rotation:	R	Insulation:	B	Eff. Date:	10-02-2012
Leads:	6#18	Literature:		Elec. Diagram:		Replaced By:	

Nameplate NP1256L									
CAT.NO.	L3403								
SPEC.	34C51-5506								
HP	.25								
VOLTS	115/230								
AMP	5/2.5								
RPM	1725								
FRAME	48	HZ	60	PH	1				
SER.F.	1.35	CODE	L	DES	N	CLASS	B		
NEMA-NOM-EFF	55	PF	57						
RATING	40C AMB-CONT								
CC				USABLE AT 208V	3				
DE	6203	ODE	6203						
ENCL	TEFC	SN							
	SFA 5.6/2.8								

Parts List		
Part Number	Description	Quantity
SA008575	SA 34C51-5506	1.000 EA
RA005022	RA 34C51-5506	1.000 EA
EC1161A02	BMI 091A161B125AD2A ELEC CAP 115V 1.4 X	1.000 EA
NS2512A01	INSULATOR, CONDUIT BOX X	1.000 EA
34CB3002A	CB CAST W/.88 DIA HOLE	1.000 EA
34GS1029A01	GASKET, CONDUIT BOX	1.000 EA
51XB1016A07	10-16 X 7/16 HXWSSLD SERTYB	2.000 EA
11XW1032G06	10-32 X .38, TAPTITE II, HEX WSHR SLTD U	1.000 EA
51XW0832A07	8-32 X .44, TAPTITE II, HEX WSHR SLTD SE	2.000 EA
34EP3102A01SP	FR ENDPLATE, MACH	1.000 EA
NS2500A01	INSULATOR, AUTO THER PROT	1.000 EA
WD1000A03	41531 AMP FLG.TERM,4M/REEL(2.5MIL)	1.000 EA
34CB4800SP	CAPACITOR COVER, STAMPED	1.000 EA
34GS3000SP	GASKET, CAPACITOR BOX	1.000 EA
51XB1016A05	10-16X5/16HX WA SL SR TYB (F/S)	2.000 EA
HW5100A03SP	WAVY WASHER (W1543-017)	1.000 EA
34EP3102A02SP	FR/PU ENDPLATE, MACH	1.000 EA
XY1032A02	10-32 HEX NUT DIRECTIONAL SERRATION	4.000 EA
34FN3002A01SP	EXTERNAL FAN, PLASTIC, .637/.639 HUB W/	1.000 EA
34FH4002A01	IEC FH NO GREASER	1.000 EA
51XW1032A06	10-32 X .38, TAPTITE II, HEX WSHR SLTD S	3.000 EA
34CB4517	CB LID 4 MTG HOLES .22 DIA STAMPED, FOR	1.000 EA
34GS1031A01	GASKET, FLAT CONDUIT BOX LID (LEXIDE)	1.000 EA
51XW0832A07	8-32 X .44, TAPTITE II, HEX WSHR SLTD SE	4.000 EA

Parts List (continued)		
Part Number	Description	Quantity
MG1000G27	PAINT- S9282E CHARCOAL GREY	0.014 GA
10XF0440S02	04-40 X 1/8 TYPE F HEX HD STAINLESS STIC	2.000 EA
SP5056A24	MODEL 34 TYPE L STATIONARY SWITCH WITH L	1.000 EA
HA3100A12	THRUBOLT 10-32 X 7.375	4.000 EA
LB1125C01	STD (STOCK) CARTON LABEL BALDOR WITH FLA	1.000 EA
LC0001A01	CONN LABEL / WARNING LABEL (LC0001 / LB1	1.000 EA
NP1256L	ALUM UL CSA CC	1.000 EA
34PA1002	PACKING GROUP, BALDOR	1.000 EA

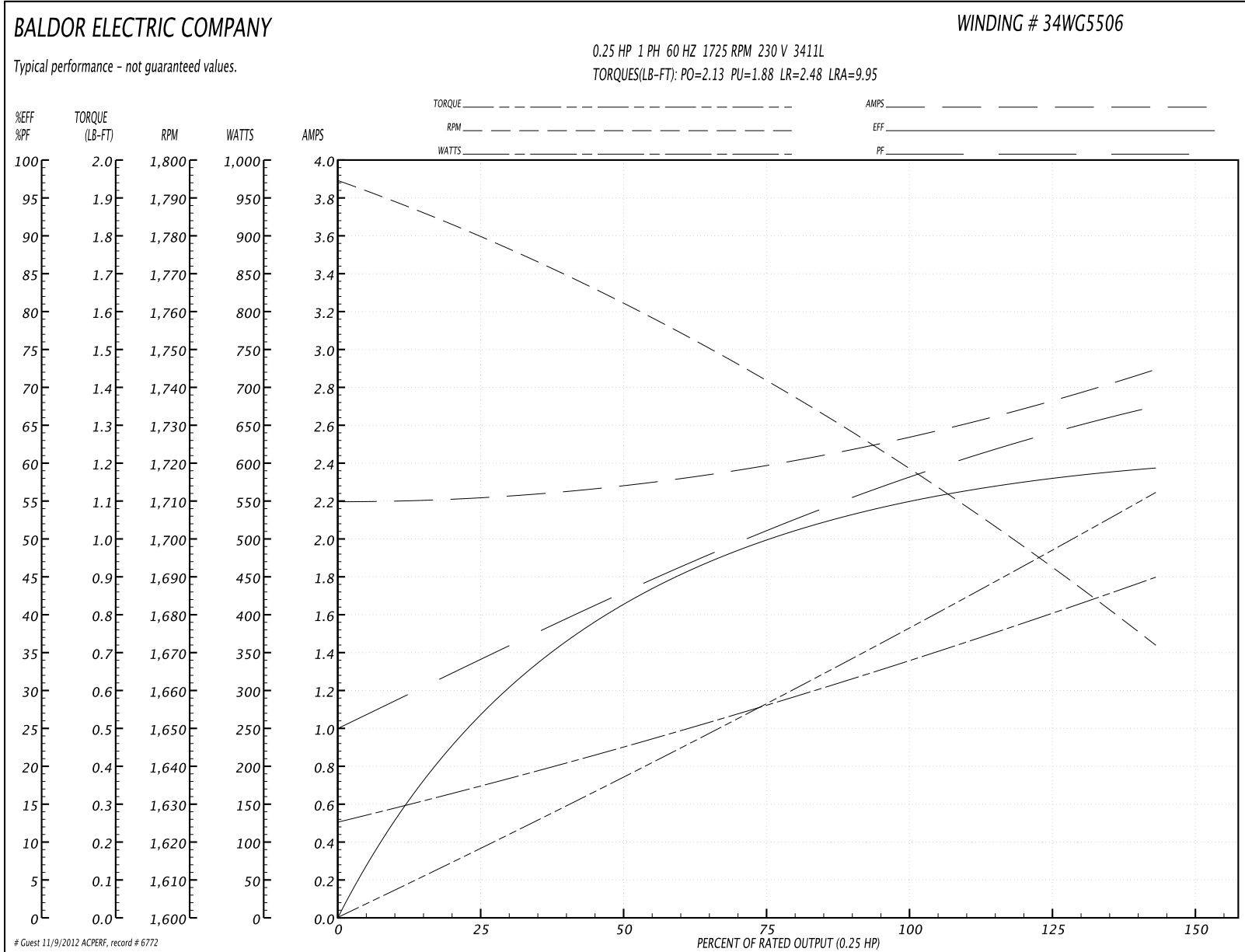
Accessories		
Part Number	Description	Multiplier
34-3900T	C-FACE KIT	A8

**Performance Data at 230V, 60Hz, 0.25HP (Typical performance - Not guaranteed values)**

General Characteristics			
Full Load Torque:	0.75 LB-FT	Start Configuration:	DOL
No-Load Current:	2.2 Amps	Break-Down Torque:	2.13 LB-FT
Line-line Res. @ 25°C.:	8.88 Ohms A Ph / 7.06 Ohms B Ph	Pull-Up Torque:	1.88 LB-FT
Temp. Rise @ Rated Load:	57 C	Locked-Rotor Torque:	2.48 LB-FT
Temp. Rise @ S.F. Load:	70 C	Starting Current:	9.95 Amps

Load Characteristics							
% of Rated Load	25	50	75	100	125	150	S.F.
Power Factor:	32.0	40.0	49.0	57.0	63.0	69.0	67.0
Efficiency:	28.0	40.0	50.0	55.0	58.0	59.0	59.0
Speed:	1779.0	1763.0	1740.0	1720.0	1700.0	1670.0	1680.0
Line Amperes:	2.2	2.3	2.4	2.5	2.7	2.9	2.8

Performance Graph at 230V, 60Hz, 0.25HP Typical performance - Not guaranteed values



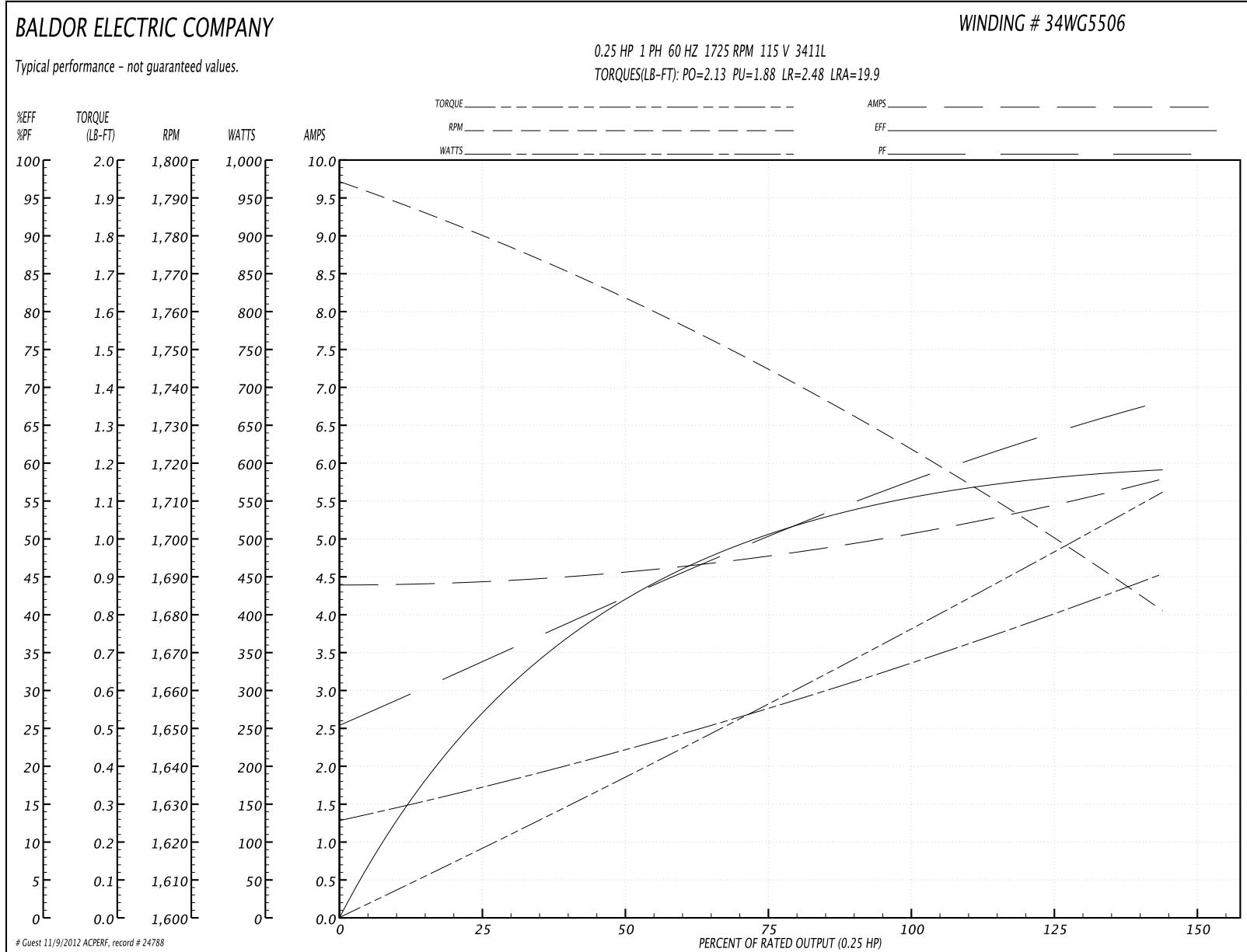
**Performance Data at 115V, 60Hz, 0.25HP (Typical performance - Not guaranteed values)**

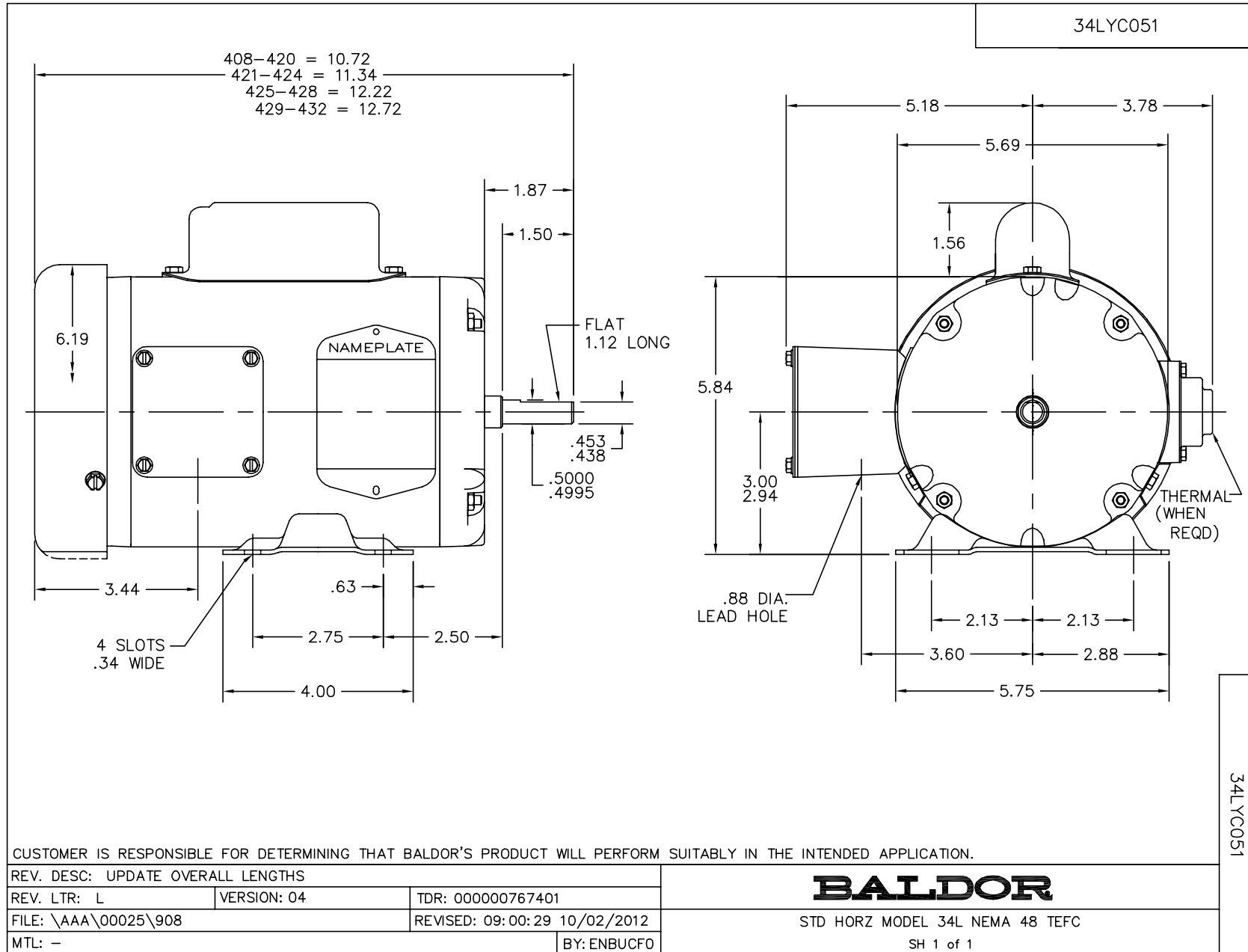
General Characteristics			
Full Load Torque:	0.75 LB-FT	Start Configuration:	DOL
No-Load Current:	4.4 Amps	Break-Down Torque:	2.13 LB-FT
Line-line Res. @ 25°C.:	2.22 Ohms A Ph / 7.06 Ohms B Ph	Pull-Up Torque:	1.88 LB-FT
Temp. Rise @ Rated Load:	42 C	Locked-Rotor Torque:	2.48 LB-FT
Temp. Rise @ S.F. Load:	50 C	Starting Current:	19.9 Amps

Load Characteristics							
% of Rated Load	25	50	75	100	125	150	S.F.
Power Factor:	31.0	40.0	49.0	57.0	63.0	69.0	67.0
Efficiency:	27.0	42.0	51.0	55.0	58.0	59.0	59.0
Speed:	1779.0	1763.0	1745.0	1725.0	1705.0	1680.0	1690.0
Line Amperes:	4.4	4.6	4.8	5.0	5.4	5.8	5.6

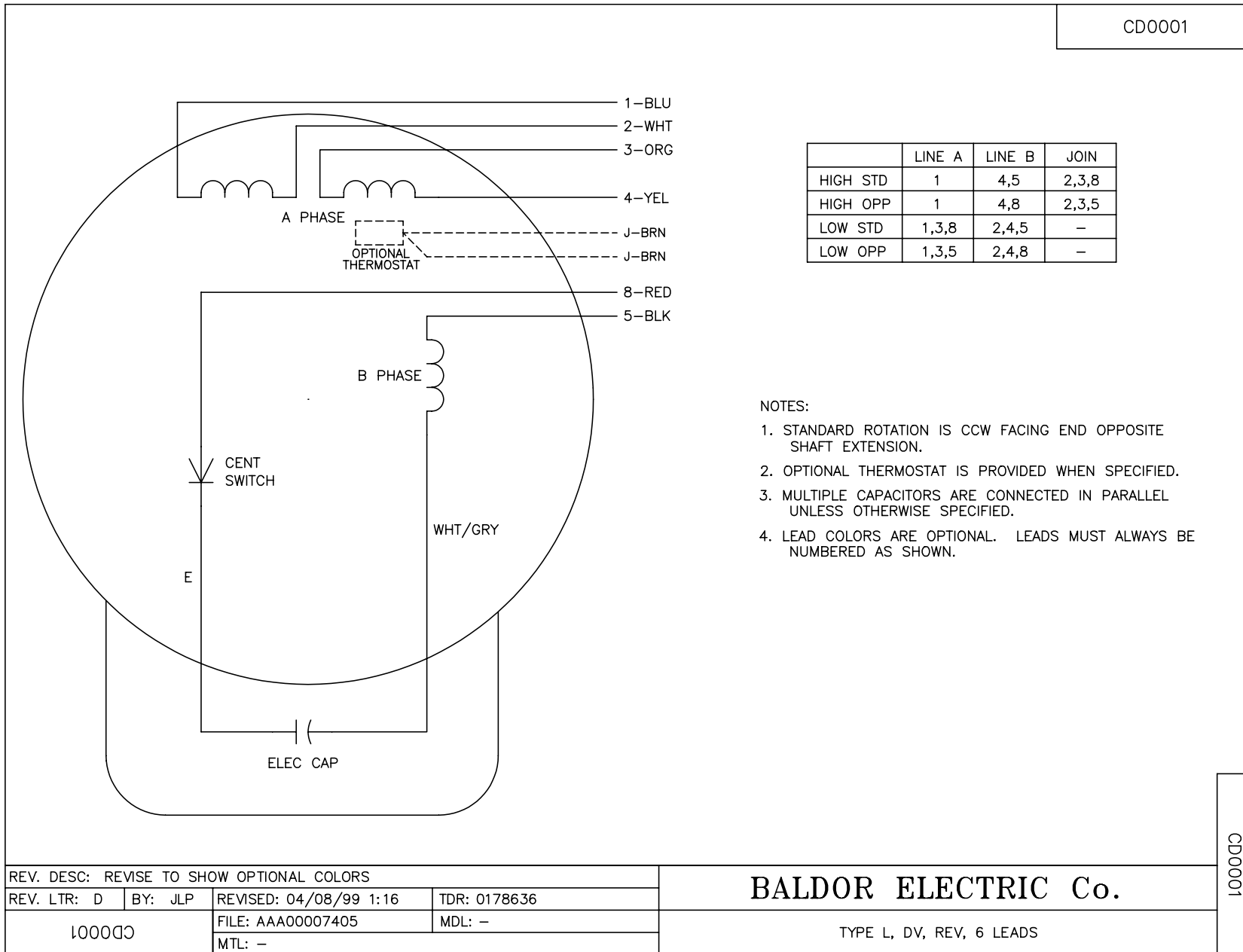


Performance Graph at 115V, 60Hz, 0.25HP Typical performance - Not guaranteed values





CD0001



CD0001

REV. DESC: REVISE TO SHOW OPTIONAL COLORS			
REV. LTR: D	BY: JLP	REVISED: 04/08/99 1:16	TDR: 0178636
100000		FILE: AAA00007405	MDL: -
		MTL: -	

**BALDOR ELECTRIC Co.**

TYPE L, DV, REV, 6 LEADS