

BALDOR® • RELIANCE

Product Information Packet

L3406M

.33HP, 1725RPM, 1PH, 60HZ, 48, 3414L, TEFC, F1

Copyright © All product information within this document is subject to Baldor Electric Company copyright © protection, unless otherwise noted.

| Part Detail | | | | | | | |
|-------------|------|-------------|-------|----------------|----------|---------------|------------|
| Revision: | S | Status: | PRD/A | Change #: | | Proprietary: | No |
| Type: | AC | Prod. Type: | 3414L | Elec. Spec: | 34WG5598 | CD Diagram: | |
| Enclosure: | TEFC | Mfg Plant: | | Mech. Spec: | 34C051 | Layout: | |
| Frame: | 48 | Mounting: | F1 | Poles: | 04 | Created Date: | |
| Base: | RG | Rotation: | R | Insulation: | B | Eff. Date: | 10-02-2012 |
| Leads: | 7#18 | Literature: | | Elec. Diagram: | | Replaced By: | |

| Nameplate NP1257L | | | | | | | |
|-------------------|----------------|------|------|-----|---|----|---|
| CAT.NO. | L3406M | | | | | | |
| SPEC. | 34C51-5598 | | | | | | |
| HP | .33 | | | | | | |
| VOLTS | 115/230 | | | | | | |
| AMP | 6/3 | | | | | | |
| RPM | 1725 | | | | | | |
| FRAME | 48 | HZ | 60 | PH | 1 | | |
| SER.F. | 1.35 | CODE | L | DES | N | CL | B |
| NEMA-NOM-EFF | 60 | PF | 60 | | | | |
| RATING | 40C AMB-CONT | | | | | | |
| CC | USABLE AT 208V | | | 3.6 | | | |
| DE | 6203 | ODE | 6203 | | | | |
| ENCL | TEFC | SN | | | | | |
| | SFA 6.8/3.4 | | | | | | |

| Parts List | | |
|---------------|--|----------|
| Part Number | Description | Quantity |
| SA008579 | SA 34C51-5598 | 1.000 EA |
| RA005026 | RA 34C51-5598 | 1.000 EA |
| NS2512A01 | INSULATOR, CONDUIT BOX X | 1.000 EA |
| 34CB3002A | CB CAST W/.88 DIA HOLE | 1.000 EA |
| 34GS1029A01 | GASKET, CONDUIT BOX | 1.000 EA |
| 51XB1016A07 | 10-16 X 7/16 HXWSSLD SERTYB | 2.000 EA |
| 11XW1032G06 | 10-32 X .38, TAPTITE II, HEX WSHR SLTD U | 1.000 EA |
| 51XW0832A07 | 8-32 X .44, TAPTITE II, HEX WSHR SLTD SE | 2.000 EA |
| 34EP3102A01SP | FR ENDPLATE, MACH | 1.000 EA |
| NS2500A01 | INSULATOR, AUTO THER PROT | 1.000 EA |
| WD1000A03 | 41531 AMP FLG.TERM,4M/REEL(2.5MIL) | 1.000 EA |
| 34CB4800SP | CAPACITOR COVER, STAMPED | 1.000 EA |
| 51XB1016A05 | 10-16X5/16HX WA SL SR TYB (F/S) | 2.000 EA |
| HW5100A03SP | WAVY WASHER (W1543-017) | 1.000 EA |
| 34EP3102A02SP | FR/PU ENDPLATE, MACH | 1.000 EA |
| XY1032A02 | 10-32 HEX NUT DIRECTIONAL SERRATION | 4.000 EA |
| 34FN3002A01SP | EXTERNAL FAN, PLASTIC, .637/.639 HUB W/ | 1.000 EA |
| 34FH4002A01 | IEC FH NO GREASER | 1.000 EA |
| 51XW1032A06 | 10-32 X .38, TAPTITE II, HEX WSHR SLTD S | 3.000 EA |
| 34CB4517 | CB LID 4 MTG HOLES .22 DIA STAMPED, FOR | 1.000 EA |
| 34GS1031A01 | GASKET, FLAT CONDUIT BOX LID (LEXIDE) | 1.000 EA |
| 51XW0832A07 | 8-32 X .44, TAPTITE II, HEX WSHR SLTD SE | 4.000 EA |
| MG1000G27 | PAINT- S9282E CHARCOAL GREY | 0.014 GA |
| 10XF0440S02 | 04-40 X 1/8 TYPE F HEX HD STAINLESS STIC | 2.000 EA |

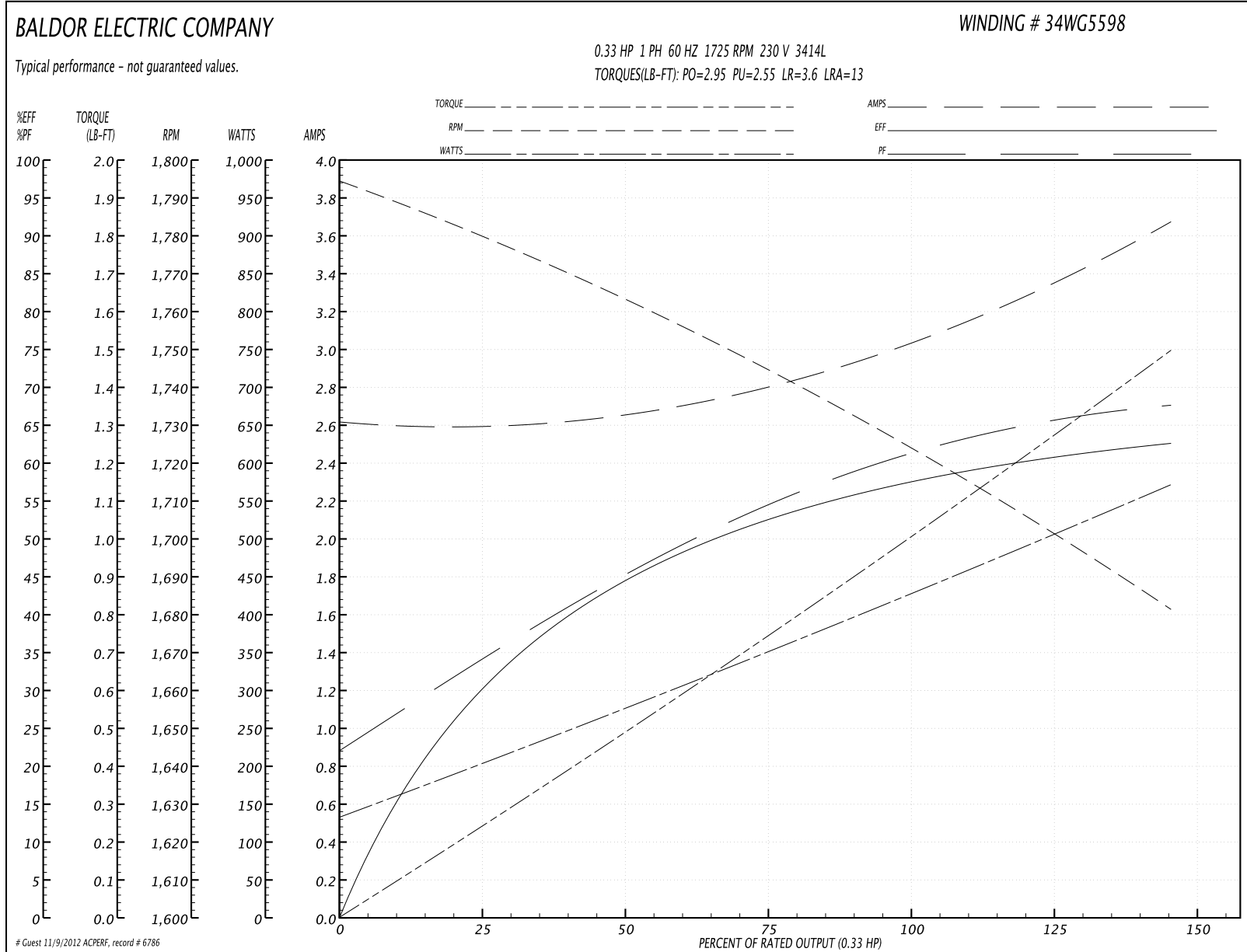
| Parts List (continued) | | |
|------------------------|--|----------|
| Part Number | Description | Quantity |
| EC1189A02SP | 61B2D120189NNBA ELEC CAP, 189-227MFD, 12 | 1.000 EA |
| 34GS3000SP | GASKET, CAPACITOR BOX | 1.000 EA |
| SP5056A24 | MODEL 34 TYPE L STATIONARY SWITCH WITH L | 1.000 EA |
| HA3100A12 | THRUBOLT 10-32 X 7.375 | 4.000 EA |
| LB1119 | WARNING LABEL | 1.000 EA |
| LB1125C01 | STD (STOCK) CARTON LABEL BALDOR WITH FLA | 1.000 EA |
| LB1087 | LABEL,MANUAL RESET (ROLL LABEL) | 1.000 EA |
| LC0008 | 1PH,DV,7-LEAD,THERMAL,CONNECTION DIAGRAM | 1.000 EA |
| NP1257L | ALUM UL CSA CC THERMAL REV MTG | 1.000 EA |
| 34PA1002 | PACKING GROUP, BALDOR | 1.000 EA |

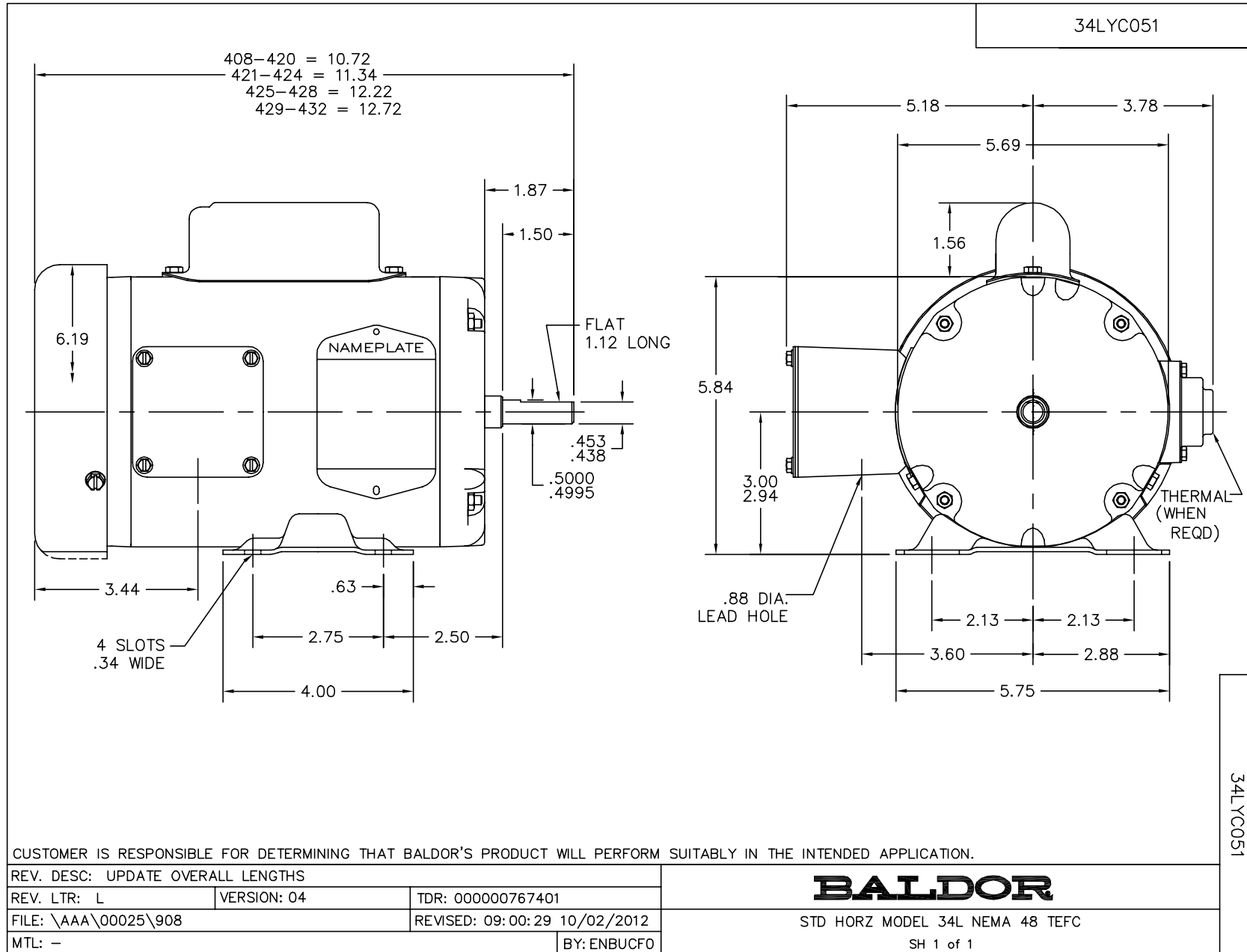
| Accessories | | |
|-------------|-------------|------------|
| Part Number | Description | Multiplier |
| 34-3900T | C-FACE KIT | A8 |

Performance Data at 230V, 60Hz, 0.33HP (Typical performance - Not guaranteed values)

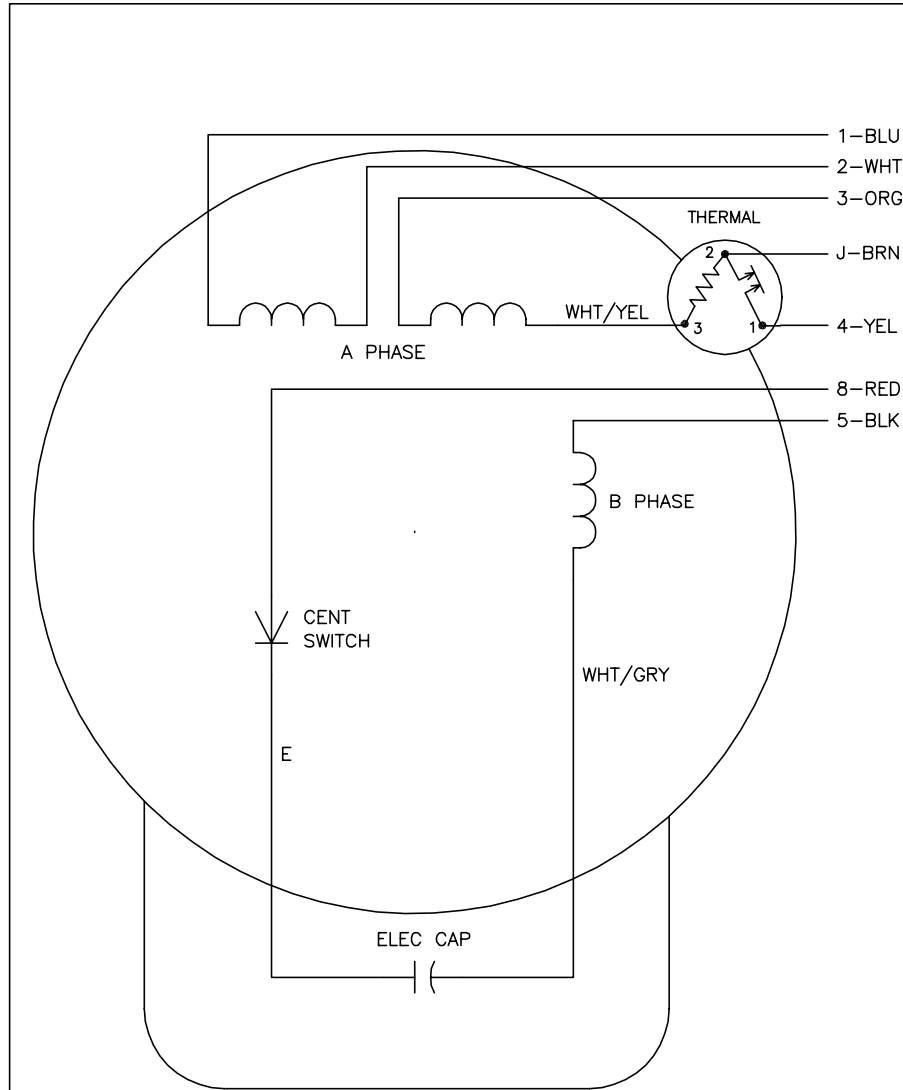
| General Characteristics | | | | | | | |
|--------------------------|---------------------------------|--------|--------|----------------------|------------|--------|--------|
| Full Load Torque: | 1.0 LB-FT | | | Start Configuration: | DOL | | |
| No-Load Current: | 2.6 Amps | | | Break-Down Torque: | 2.95 LB-FT | | |
| Line-line Res. @ 25°C.: | 6.32 Ohms A Ph / 4.93 Ohms B Ph | | | Pull-Up Torque: | 2.55 LB-FT | | |
| Temp. Rise @ Rated Load: | 59 C | | | Locked-Rotor Torque: | 3.6 LB-FT | | |
| Temp. Rise @ S.F. Load: | 73 C | | | Starting Current: | 13.0 Amps | | |
| Load Characteristics | | | | | | | |
| % of Rated Load | 25 | 50 | 75 | 100 | 125 | 150 | S.F. |
| Power Factor: | 31.0 | 41.0 | 52.0 | 60.0 | 67.0 | 73.0 | 71.0 |
| Efficiency: | 33.0 | 41.0 | 52.0 | 60.0 | 61.5 | 61.5 | 61.5 |
| Speed: | 1780.0 | 1760.0 | 1745.0 | 1725.0 | 1705.0 | 1680.0 | 1690.0 |
| Line Amperes: | 2.6 | 2.7 | 2.8 | 3.0 | 3.3 | 3.7 | 3.4 |

Performance Graph at 230V, 60Hz, 0.33HP Typical performance - Not guaranteed values





CD0008



| | LINE A | LINE B | JOIN | JOIN |
|----------|--------|--------|-------|-------|
| HIGH STD | 1 | 4 | 2,3,8 | J,5 |
| HIGH OPP | 1 | 4 | 2,3,5 | J,8 |
| LOW STD | 1,3,8 | 4 | - | 2,J,5 |
| LOW OPP | 1,3,5 | 4 | - | 2,J,8 |

NOTES:

1. STANDARD ROTATION IS CCW FACING END OPPOSITE SHAFT EXTENSION.
2. MULTIPLE CAPACITORS ARE CONNECTED IN PARALLEL UNLESS OTHERWISE SPECIFIED.
3. LEAD COLORS ARE OPTIONAL. LEADS MUST ALWAYS BE NUMBERED AS SHOWN.

| | | | |
|--|----------------------|------------------------------|--|
| REV. DESC: REMOVE 2-TERMINAL THERMAL DETAIL, SEE CD0008A02 | | | |
| REV. LTR: F | VERSION: 01 | TDR: 000000360649 | |
| 80000D | FILE: \AAA\00007\408 | REVISED: 10:56:54 04/18/2005 | |
| | MTL: - | BY: ENJOEPO | |

BALDOR ELECTRIC Co.

TYPE L, DV, REV, THERMAL, 7 LEADS

CD0008