

BALDOR® • RELIANCE

Product Information Packet

L3608TM

5HP,3450RPM,1PH,60HZ,184T,3640LC,TEFC,F1

Copyright © All product information within this document is subject to Baldor Electric Company copyright © protection, unless otherwise noted.

Part Detail							
Revision:	AK	Status:	PRD/A	Change #:		Proprietary:	No
Type:	AC	Prod. Type:	3640LC	Elec. Spec:	36WGW957	CD Diagram:	
Enclosure:	TEFC	Mfg Plant:		Mech. Spec:	36F227	Layout:	
Frame:	184T	Mounting:	F1	Poles:	02	Created Date:	
Base:	RG	Rotation:	R	Insulation:	F	Eff. Date:	05-24-2012
Leads:	2#14 A PH,3#16 B&J	Literature:		Elec. Diagram:		Replaced By:	

Nameplate NP1257L										
CAT.NO.	L3608TM									
SPEC.	36F227W957									
HP	5									
VOLTS	230									
AMP	19.5									
RPM	3450									
FRAME	184T	HZ				60	PH	1		
SER.F.	1.00	CODE				G	DES	L	CL	F
NEMA-NOM-EFF	83	PF				99				
RATING	40C AMB-CONT									
CC					USABLE AT 208V					
DE	6206	ODE				6205				
ENCL	TEFC	SN								

Parts List		
Part Number	Description	Quantity
SA034863	SA 36F227W957	1.000 EA
RA030891	RA 36F227W957	1.000 EA
OC3040F09SP	CYL OIL CAP 40MFD/370V	1.000 EA
TPBRT25DB	THERMAL 1PH 1.25 MAN 120CWELDED	1.000 EA
EC1161C06SP	ELEC CAP, 161-193 MFD, 250V, 2.06D X 4.	2.000 EA
TP5059	GENERIC THERMAL KIT	1.000 EA
36CB3004A02	36 CB 1.09 @ 6, 1.25 MTO @ 3	1.000 EA
36GS1000SP	GASKET-CONDUIT BOX, .06 THICK #SV-330 LE	1.000 EA
51XB1016A08	10-16X 1/2HXWSSLD SERTYB	2.000 EA
11XW1032G06	10-32 X .38, TAPTITE II, HEX WSHR SLTD U	1.000 EA
HA6015A09	THERMAL RETAINER	1.000 EA
51XB1214A10	12-14 X 5/8HX WS SL SR TYBX	2.000 EA
36EP3101A01SP	FR ENDPLATE, MACH	1.000 EA
HW4500A01	1641B(ALEMITE)400 UNIV, GREASE FITT	1.000 EA
13XF0832A08	8-32 X.50 PAN HD,SLTD, TYPE F SCREW, ZIN	2.000 EA
36CB3800SP	CAPACITOR COVER, CAST	1.000 EA
36GS3000	GASKET, CAPACITOR COVER LEXIDE	1.000 EA
51XB1016A05	10-16X5/16HX WA SL SR TYB (F/S)	2.000 EA
10XN2520A12	O1/4-20X 3/4 HEX HEAD CAP	2.000 EA
HW5100A05	WVY WSHR F/205 & 304 BRGS	1.000 EA
36EP3100A01SP	PU ENDPLATE, MACH	1.000 EA
HW4500A01	1641B(ALEMITE)400 UNIV, GREASE FITT	1.000 EA
XY2520A12	1/4-20 HEX NUT, DIRECTIONAL SERRATIONS	4.000 EA
51XB1214A16	12-14X1.00 HXWSSLD SERTYB	1.000 EA

Parts List (continued)		
Part Number	Description	Quantity
51XW1032A06	10-32 X .38, TAPTITE II, HEX WSHR SLTD S	3.000 EA
36CB4516	36 LIPPED CB LID	1.000 EA
37GS1001SP	GASKET, CONDUIT BOX LID, .06 THICK LEXID	1.000 EA
51XW0832A07	8-32 X .44, TAPTITE II, HEX WSHR SLTD SE	4.000 EA
HW2501E16	3KEY, 1/4 SQ X 1.750	1.000 EA
HA7000A02	KEY RETAINER RING, 1 1/8 DIA, 1 3/8 DIA	1.000 EA
85XU0407S04	4X1/4 U DRIVE PIN STAINLESS	2.000 EA
HA7010A01	CAPACITOR RETENTION CLAMP, 6.562 LONG	1.000 EA
MJ1000A75	GREASE, POLYREX EM EXXON	0.050 LB
36FH4009A76	IEC FH W/GRSR,GRILL,DIMPLES, AUTOPHERETI	1.000 EA
MG1000G27	PAINT- S9282E CHARCOAL GREY	0.022 GA
LB1115	LABEL,LIFTING DEVICE	1.000 EA
SP5064A01	MODEL 36 TYPE LC STATIONARY SWITCH LEAD	1.000 EA
WD1000A15	3-520132-2 AMP FLAG (4M/RL NON-CANC/NON-	6.000 EA
HA3101A40	THRUBOLT 1/4-20 X 12.687	4.000 EA
35FN3002A04SP	EXFN, PLASTIC, 6.376 OD, .906 ID W/KEY	1.000 EA
LB1119	WARNING LABEL	1.000 EA
LB1125C01	STD (STOCK) CARTON LABEL BALDOR WITH FLA	1.000 EA
LB1087	LABEL,MANUAL RESET (ROLL LABEL)	1.000 EA
HA6362ZP	LIFTING LUG FOR 36 FRAME MOTORS.	2.000 EA
LC0002	CONNECTION LABEL	1.000 EA
NP1257L	ALUM UL CSA CC THERMAL REV MTG	1.000 EA
36PA1001	PACKAGING GROUP	1.000 EA

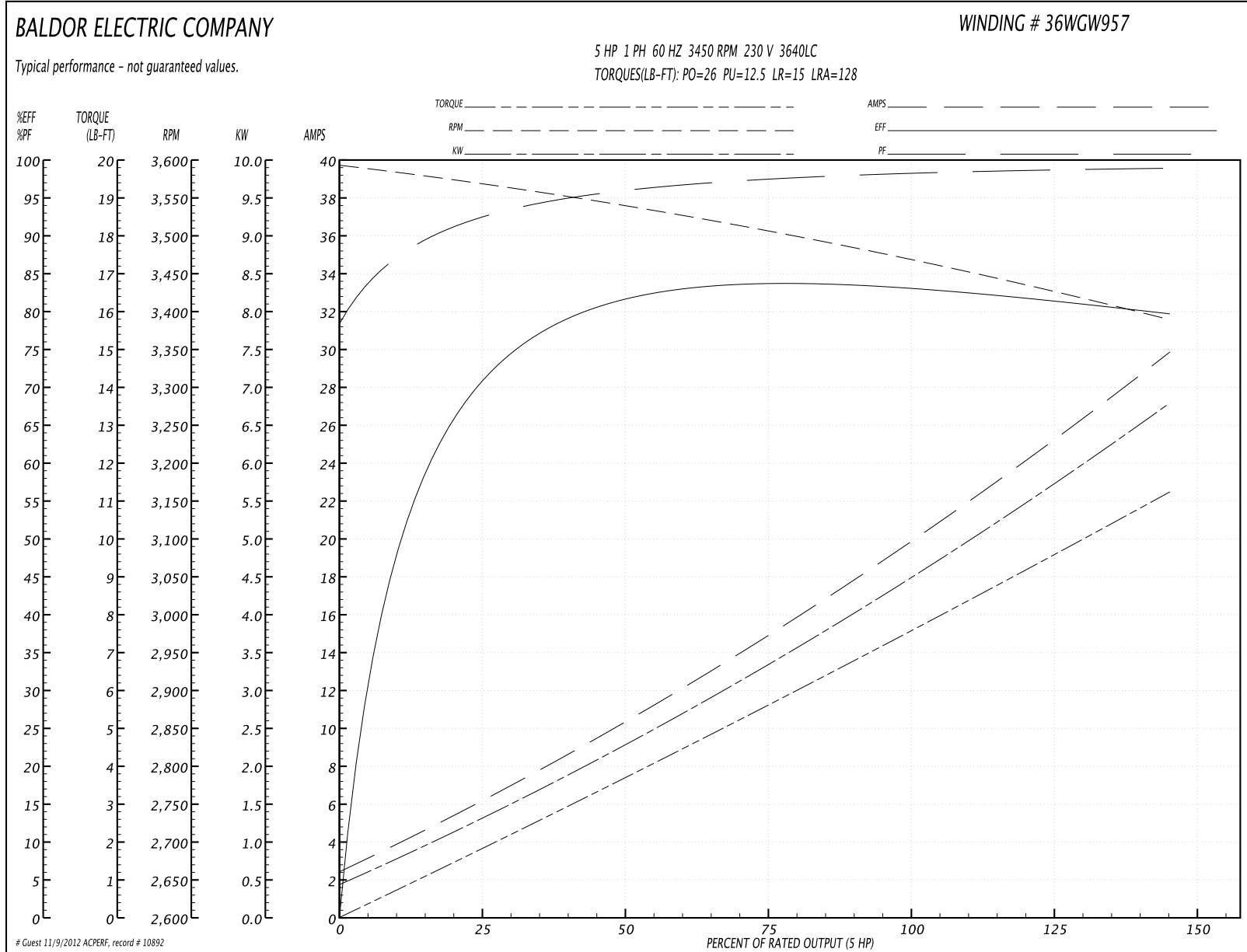
Accessories		
Part Number	Description	Multiplier
36-3301	C FACE KIT	A8
36EP1304A62SP	FLANGE MTD ENDPLATE 182-4TD -ENCL (LESS	A8

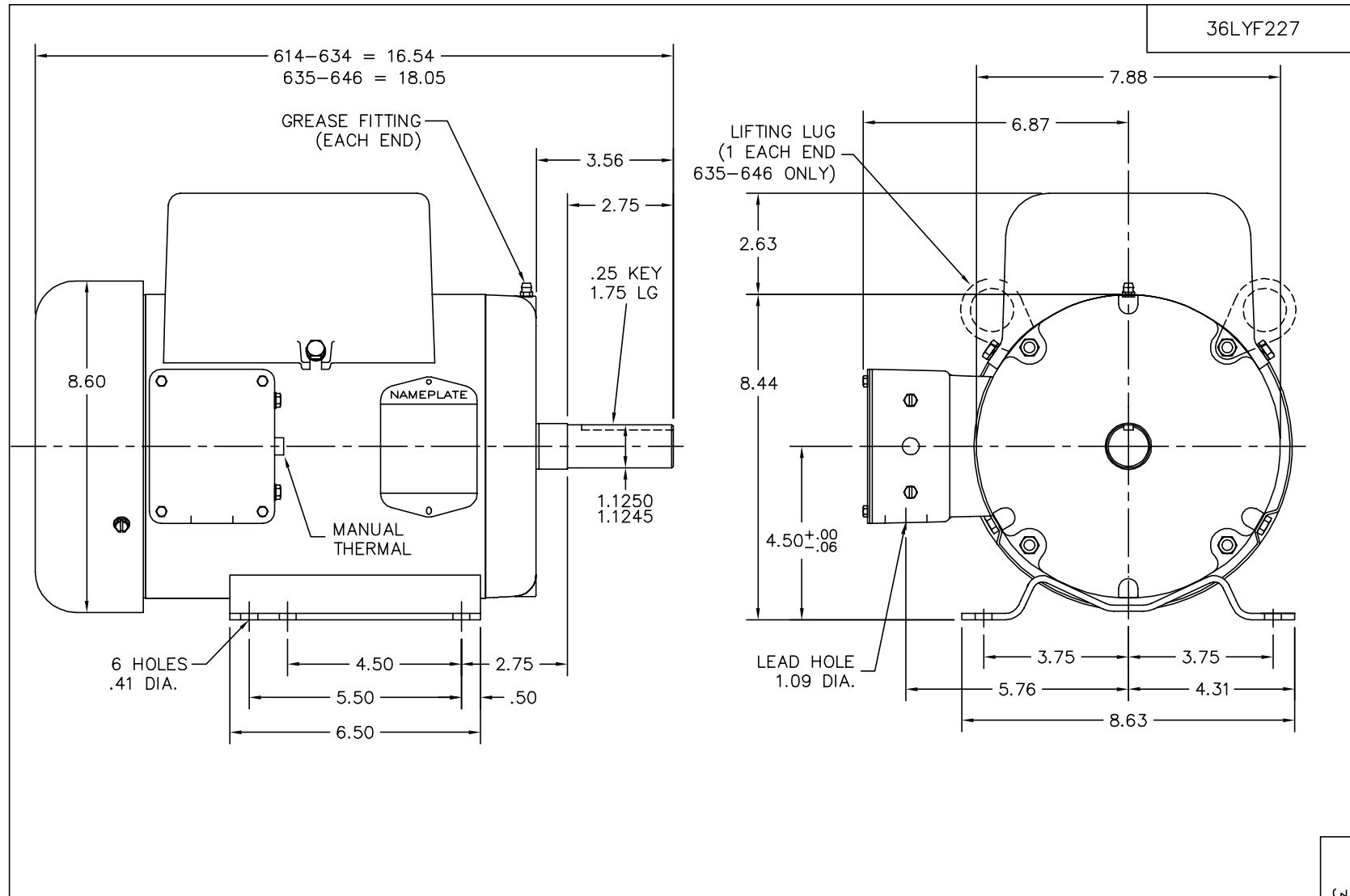
Performance Data at 230V, 60Hz, 5.0HP (Typical performance - Not guaranteed values)

General Characteristics			
Full Load Torque:	7.5 LB-FT	Start Configuration:	DOL
No-Load Current:	2.3 Amps	Break-Down Torque:	26.0 LB-FT
Line-line Res. @ 25°C.:	0.38 Ohms A Ph / 1.02 Ohms B Ph	Pull-Up Torque:	12.5 LB-FT
Temp. Rise @ Rated Load:	67 C	Locked-Rotor Torque:	15.0 LB-FT
Temp. Rise @ S.F. Load:		Starting Current:	128.0 Amps

Load Characteristics							
% of Rated Load	25	50	75	100	125	150	S.F.
Power Factor:	98.0	98.0	98.0	98.0	97.0	97.0	0.0
Efficiency:	66.4	81.5	83.9	83.9	82.1	79.2	0.0
Speed:	3565.0	3539.0	3507.0	3472.0	3430.0	3389.0	0.0
Line Amperes:	6.5	10.4	14.9	19.6	24.7	29.9	0.0

Performance Graph at 230V, 60Hz, 5.0HP Typical performance - Not guaranteed values





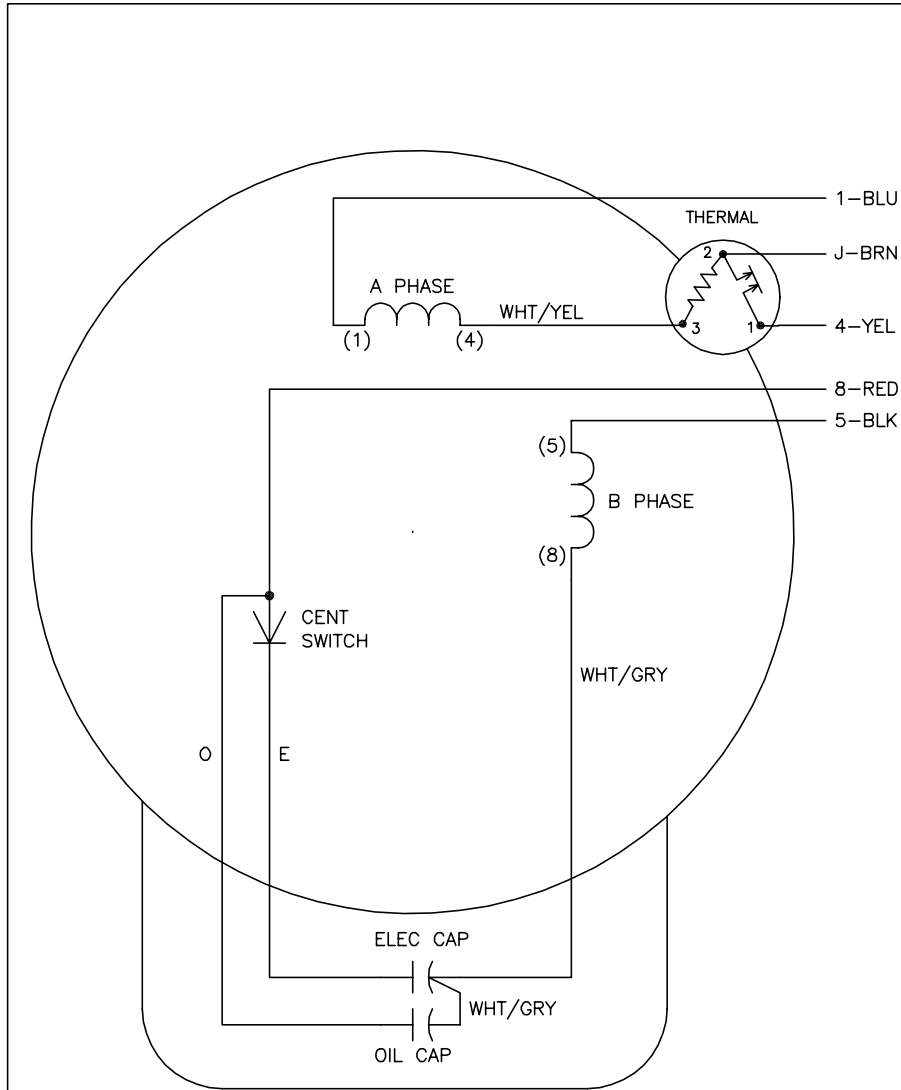
CUSTOMER IS RESPONSIBLE FOR DETERMINING THAT MOTOR PERFORMANCE IS SUITABLE IN THE APPLICATION.

REV. DESC: 614-634 WAS 628-634			
REV. LTR: F	BY: RMP	REVISED: 12:30:21 06/02/2004	TDR: 334153
36LYF227		FILE: AAA00012693	REF: 36LYF227
		MTL: -	

BALDOR ELECTRIC Co.
STD HORZ 36LC 182-4T TEFC W/1.25 MTO

36LYF227

CD0002A02



	LINE A	LINE B	JOIN
STD	1,8	4	J,5
OPP	1,5	4	J,8

NOTES:

1. STANDARD ROTATION IS CCW FACING END OPPOSITE SHAFT EXTENSION.
2. MULTIPLE CAPACITORS ARE CONNECTED IN PARALLEL UNLESS OTHERWISE SPECIFIED.
3. LEAD COLORS ARE OPTIONAL. LEADS MUST ALWAYS BE NUMBERED AS SHOWN.

REV. DESC: REMOVE 2-TERMINAL THERMAL DETAIL, SEE CD0002A04			
REV. LTR: D	VERSION: 01	TDR: 000000360649	
Z0VZ00000 CD0002A02	FILE: \AAA\00007\520	REVISED: 17:11:40 04/15/2005	
	MTL: -	BY: ENJOEPO	

BALDOR ELECTRIC Co.

TYPE LC, SV, REV, THERMAL, 5 LEADS

CD0002A02