

BALDOR® • RELIANCE

Product Information Packet

LPL50

.5HP,3450RPM,1PH,60HZ,3520S,3520S,BUFF

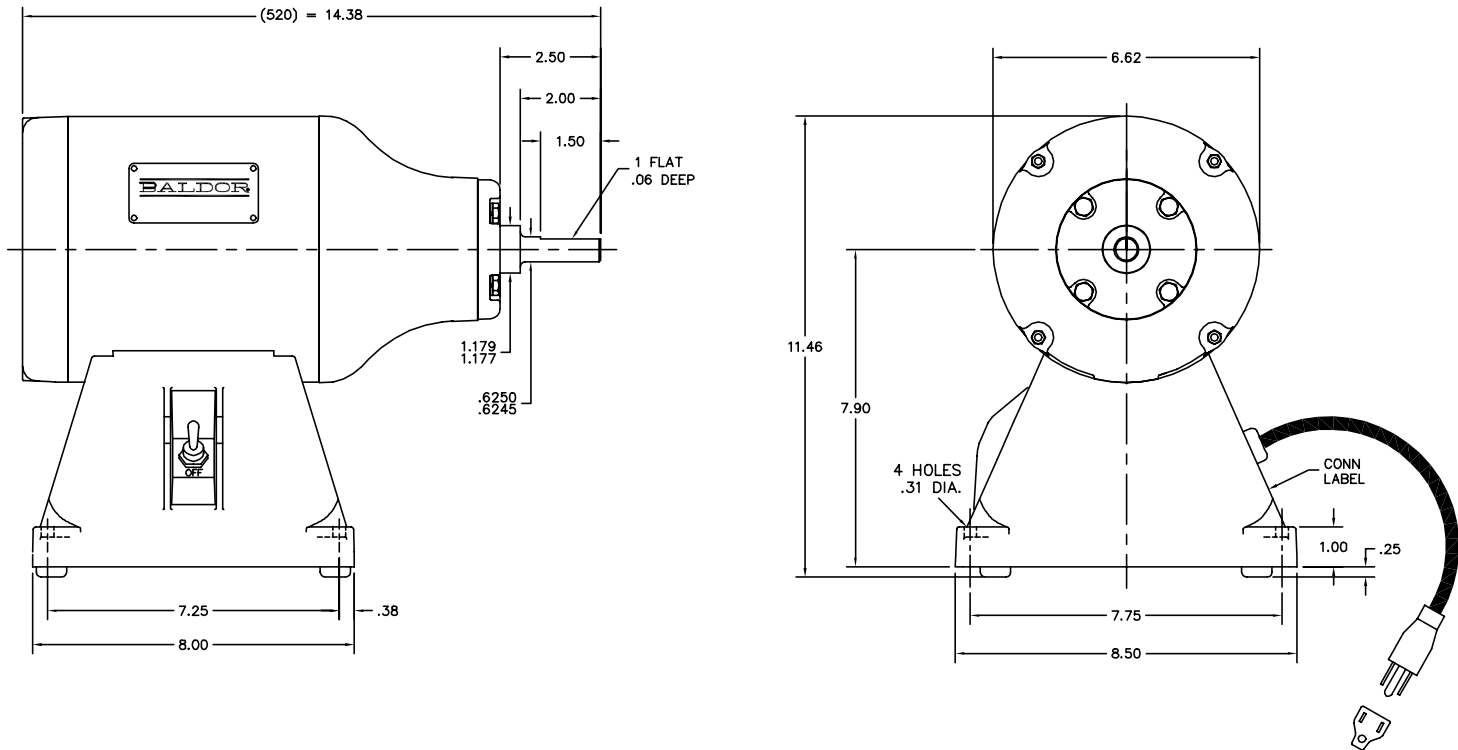
Copyright © All product information within this document is subject to Baldor Electric Company copyright © protection, unless otherwise noted.

Part Detail							
Revision:	AJ	Status:	PRD/A	Change #:		Proprietary:	No
Type:	AC	Prod. Type:	3520S	Elec. Spec:	L5WG0025	CD Diagram:	
Enclosure:	TENV	Mfg Plant:		Mech. Spec:	L35-282	Layout:	
Frame:		Mounting:	F1	Poles:	02	Created Date:	08-08-2007
Base:	RG	Rotation:	FOS	Insulation:	B	Eff. Date:	09-30-2011
Leads:	2#18	Literature:		Elec. Diagram:		Replaced By:	
Nameplate NP1625							
CAT.NO.	LPL50						
HP	.5	VOLTS				115	
PHASE	1	AMPS				5.4	
HZ	60	RPM				3450	
SER.NO							
SPEC.	L35-282-25						

Parts List		
Part Number	Description	Quantity
SA037709	SA L35-282-25	1.000 EA
RA033734	RA L35-282-25	1.000 EA
G8BA3000	G8 & G10 BASE	1.000 EA
SP9000SP	80600BJ A-H OR 1520237-2 TYCO;2PST,125/2	1.000 EA
HW1003A50	LOCKWASHER,1/2",EXT.TOOTHZINC PLATED	1.000 EA
NS2514A01	INSULATOR, SWITCH	1.000 EA
11XW1032G06	10-32 X .38, TAPTITE II, HEX WSHR SLTD U	1.000 EA
HW3001B01	003SS CUP WASHER, FOR #8 SCREW	1.000 EA
LD5001A02	CORD & PLUG ASSY 18-3 SJT .33 DIA. 10 AM	1.000 EA
WD4102A01	SR-6L-1 HEYCO STRN RELIEF OR 23MPO6L10 M	1.000 EA
35EP3100A04AR	STD FR EP-TENV-35L OR M--203 BRG (ALT. R	1.000 EA
51XW0832A07	8-32 X .44, TAPTITE II, HEX WSHR SLTD SE	2.000 EA
HW5100A03SP	WAVY WASHER (W1543-017)	1.000 EA
G8EP3900A01SP	ENDPLATE, MACH	1.000 EA
19XW2520A16	SCREW,1/4-20X1 TAPTITE-II OR ROLOC 91	4.000 EA
HA3100A28	THRUBOLT 10-32 X 8.187	4.000 EA
XY1032A02	10-32 HEX NUT DIRECTIONAL SERRATION	4.000 EA
G8CB4500A02	G8-272 BASE COVER,STPD X PLATED	1.000 EA
51XW0832A07	8-32 X .44, TAPTITE II, HEX WSHR SLTD SE	2.000 EA
RM1005A01SP	BUMPER- #2089 (R-R CO)	4.000 EA
15XF1032A10	10-32X5/8 PIN HD PHL TY FSEE JT	4.000 EA
19XX2520A14	SCREW,1/4-10X7/8 PLASTITEOBS USE 19XX251	4.000 EA
HW1000A25	1/4 SAE FLAT WASHER (FS)	4.000 EA
WD4006A01	WIRE JOINT, RB-4 OR RB-44	1.000 EA

Parts List (continued)		
Part Number	Description	Quantity
MJ1000A75	GREASE, POLYREX EM EXXON	0.050 LB
HA1000A34	DR2463A .02 BRG GUARD B N	2.000 EA
MG1000G18	PAINT, 189-905 SILVER HAMR	0.017 GA
85XU0407A04	#4-7 X 1/4 DRIVE PIN	2.000 EA
LB1009	LABEL,ROTATION DIRECTION (ON ROLLS)	1.000 EA
LB1076	LABEL, "ON" AND "OFF"	1.000 EA
LB1091	LABEL, WARNING BUFFERS	1.000 EA
LB1119	WARNING LABEL	1.000 EA
NP1625	BUFFER, ALUM, UL	1.000 EA
SP5055A55	MODEL 35 TYPE S STATIONARY SWITCH WITH L	1.000 EA
36PA1001	PACKAGING GROUP	1.000 EA
LB1125C01	STD (STOCK) CARTON LABEL BALDOR WITH FLA	1.000 EA
MN906	Baldor Buffer 9/10	1.000 EA

LSLY0282



CUSTOMER IS RESPONSIBLE FOR DETERMINING THAT MOTOR PERFORMANCE IS SUITABLE IN THE APPLICATION.

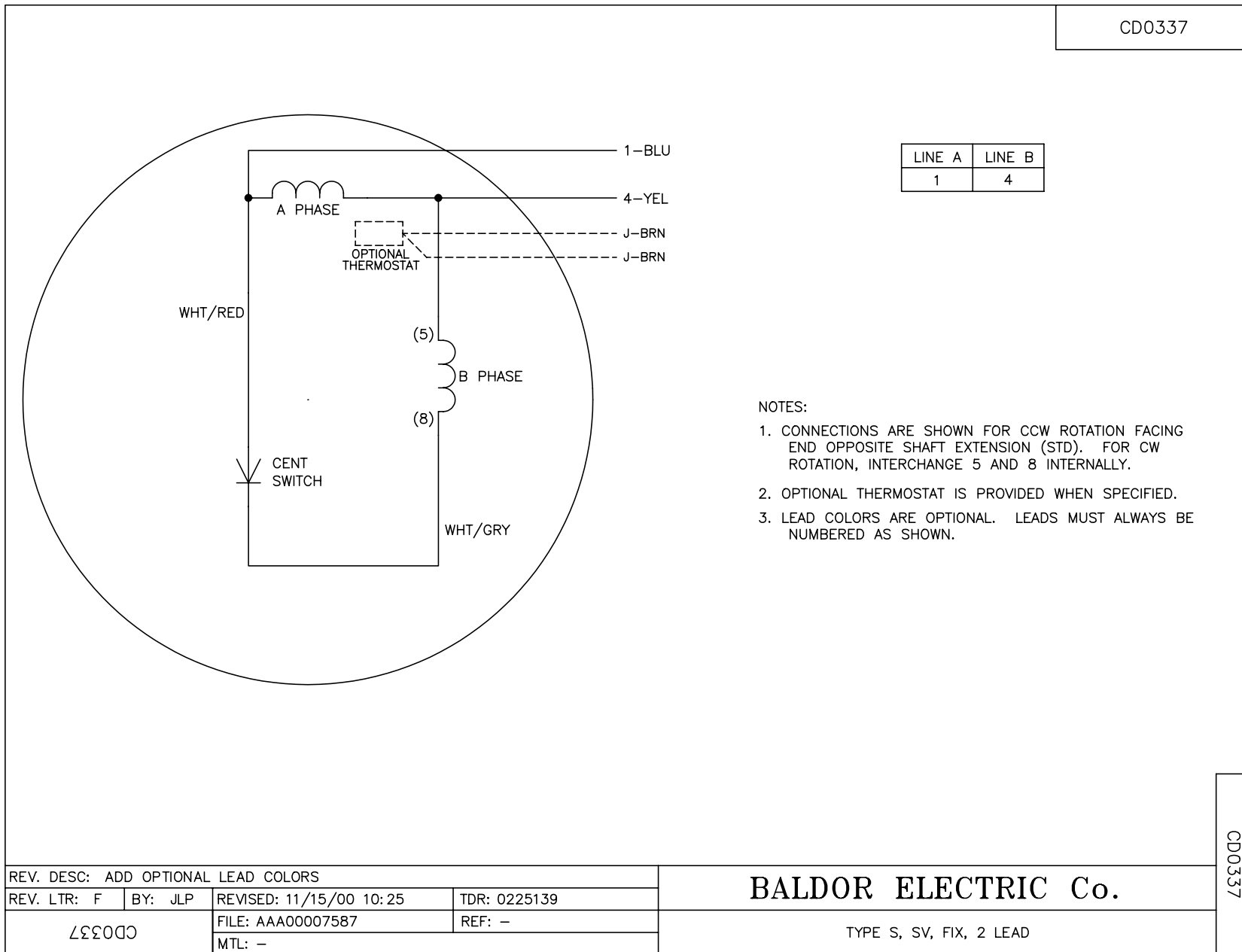
REV. DESC: CORRECTED PLUG GRAPHICS TO MATCH BOM	
REV. LTR: E BY: SSS REVISED: 12:44:17 12/03/2004 TDR: 350331	
FILE: AAA00064330	REF: LSLY0282
MTL: -	

BALDOR ELECTRIC Co.

SPL 8" BUFFER TENV MODEL 520S

LSLY0282

CD0337



NOTES:

1. CONNECTIONS ARE SHOWN FOR CCW ROTATION FACING END OPPOSITE SHAFT EXTENSION (STD). FOR CW ROTATION, INTERCHANGE 5 AND 8 INTERNALLY.
2. OPTIONAL THERMOSTAT IS PROVIDED WHEN SPECIFIED.
3. LEAD COLORS ARE OPTIONAL. LEADS MUST ALWAYS BE NUMBERED AS SHOWN.

CD0337

REV. DESC: ADD OPTIONAL LEAD COLORS			
REV. LTR: F	BY: JLP	REVISED: 11/15/00 10:25	TDR: 0225139
CD0337		FILE: AAA00007587	REF: -
		MTL: -	

BALDOR ELECTRIC Co.

TYPE S, SV, FIX, 2 LEAD