

BALDOR® • RELIANCE

Product Information Packet

M1009T

7.5/1.9HP, 1725/850RPM, 3PH, 60HZ, 215T

Copyright © All product information within this document is subject to Baldor Electric Company copyright © protection, unless otherwise noted.

Part Detail							
Revision:	V	Status:	PRD/A	Change #:		Proprietary:	No
Type:	AC	Prod. Type:	3735M	Elec. Spec:	37WGW616	CD Diagram:	
Enclosure:	OPEN	Mfg Plant:		Mech. Spec:	37B001	Layout:	
Frame:	215T	Mounting:	F1	Poles:	04/08	Created Date:	
Base:	RG	Rotation:	R	Insulation:	B	Eff. Date:	04-30-2009
Leads:	6#12	Literature:		Elec. Diagram:		Replaced By:	

Nameplate NP1256L									
CAT.NO.	M1009T								
SPEC.	37B01W616								
HP	7.5/1.9								
VOLTS	230								
AMP	20/7.5								
RPM	1725/850								
FRAME	215T	HZ			60	PH	3		
SER.F.	1.15	CODE			J	DES	B	CLASS	B
NEMA-NOM-EFF				PF					
RATING	40C AMB-CONT								
CC				USABLE AT 208V					
DE	6307	ODE			6206				
ENCL	OPEN	SN							

Parts List		
Part Number	Description	Quantity
SA030359	SA 37B01W616	1.000 EA
RA026400	RA 37B01W616	1.000 EA
HW3200A01	3/8-16X3/4 I-BLT WELDED F/S	1.000 EA
37CB3006	37 CB CASTING W/1.38 LEAD HOLE @ 6:00	1.000 EA
51XW2520A12	.25-20 X .75, TAPTITE II, HEX WSHR SLTD	2.000 EA
11XW1032G06	10-32 X .38, TAPTITE II, HEX WSHR SLTD U	1.000 EA
37EP3200A01SP	FR ENDPLATE, 37L&M, OPEN, MACH, W/GREASE	1.000 EA
HW4500A01	1641B(ALEMITE)400 UNIV, GREASE FITT	1.000 EA
HW5100A06	W2420-025 WVY WSHR (WB)	1.000 EA
37EP3201A01	PU ENDPLATE, MACH 213-5T	1.000 EA
HW4500A01	1641B(ALEMITE)400 UNIV, GREASE FITT	1.000 EA
XY3118A12	5/16-18 HEX NUT DIRECTIONAL SERRATION	4.000 EA
37CB4516	LIPPED LID FOR 37 FRAME NEC KOBX	1.000 EA
51XW0832A07	8-32 X .44, TAPTITE II, HEX WSHR SLTD SE	4.000 EA
HW2501F21	KEY, 5/16 SQ X 2.375	1.000 EA
HA7000A02	KEY RETAINER RING, 1 1/8 DIA, 1 3/8 DIA	1.000 EA
85XU0407S04	4X1/4 U DRIVE PIN STAINLESS	2.000 EA
LB1115	LABEL,LIFTING DEVICE	1.000 EA
MJ1000A75	GREASE, POLYREX EM EXXON	0.050 LB
MG1000G27	PAINT- S9282E CHARCOAL GREY	0.028 GA
HA3104A14	THRUBOLT- 5/16-18 X12.125(OHIO)	4.000 EA
LB1119	WARNING LABEL	1.000 EA
LB1125C01	STD (STOCK) CARTON LABEL BALDOR WITH FLA	1.000 EA
LC0032	CONNECTION LABEL	1.000 EA

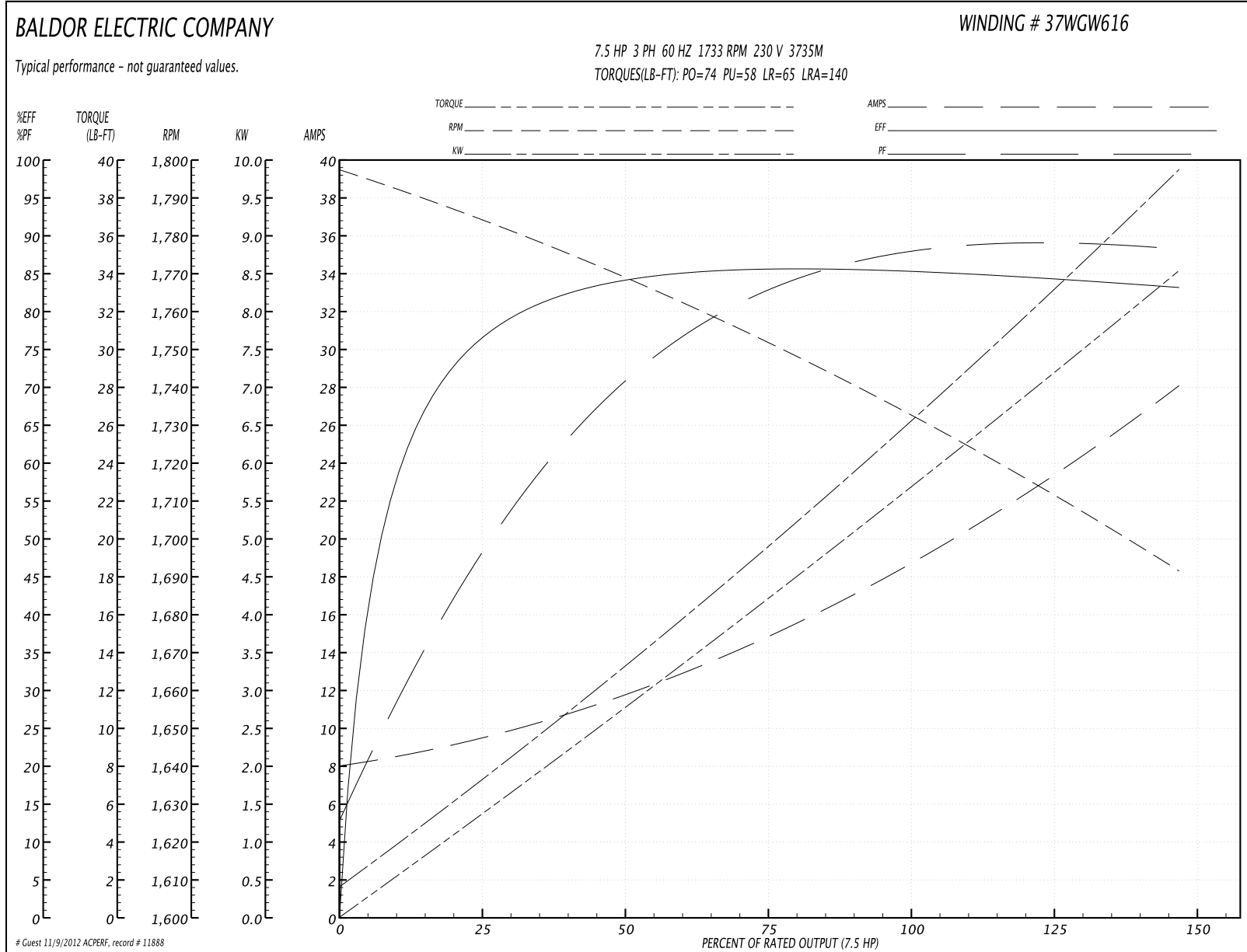
Parts List (continued)		
Part Number	Description	Quantity
NP1256L	ALUM UL CSA CC	1.000 EA
36PA1001	PACKAGING GROUP	1.000 EA

Accessories		
Part Number	Description	Multiplier
37-1404	C FACE KIT	A8

Performance Data at 230V, 60Hz, 7.5HP (Typical performance - Not guaranteed values)

General Characteristics							
Full Load Torque:	22.8 LB-FT			Start Configuration:	DOL		
No-Load Current:	8.2 Amps			Break-Down Torque:	74.0 LB-FT		
Line-line Res. @ 25°C.:	0.521 Ohms A Ph / 0.0 Ohms B Ph			Pull-Up Torque:	58.0 LB-FT		
Temp. Rise @ Rated Load:	59 C			Locked-Rotor Torque:	65.0 LB-FT		
Temp. Rise @ S.F. Load:	74 C			Starting Current:	140.0 Amps		
Load Characteristics							
% of Rated Load	25	50	75	100	125	150	S.F.
Power Factor:	50.0	71.0	82.0	87.0	89.0	91.0	0.0
Efficiency:	76.3	83.9	85.6	85.5	84.6	83.0	0.0
Speed:	1783.0	1768.0	1751.0	1733.0	1713.0	1691.0	0.0
Line Amperes:	9.3	11.8	15.1	18.9	23.2	28.0	21.5

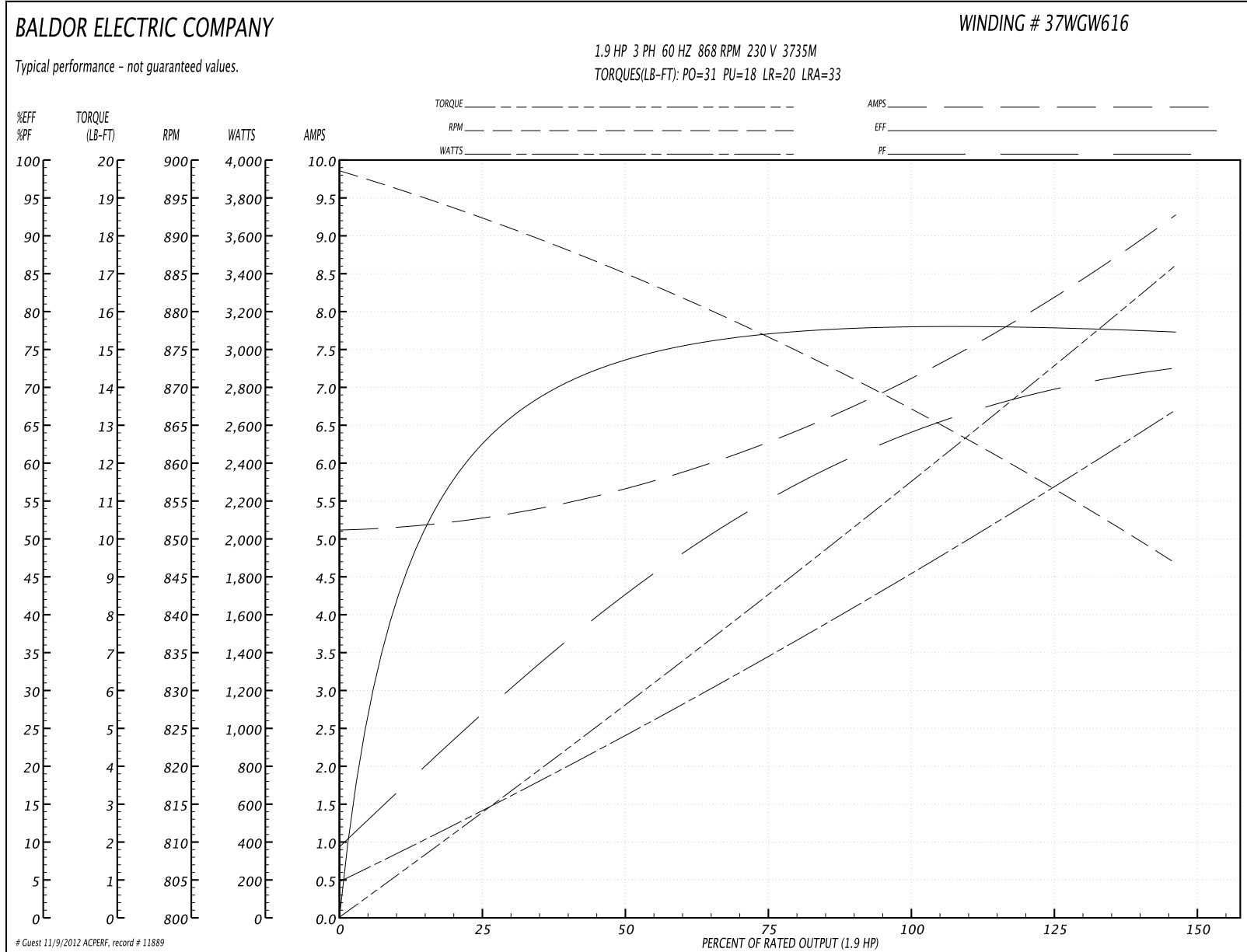
Performance Graph at 230V, 60Hz, 7.5HP Typical performance - Not guaranteed values

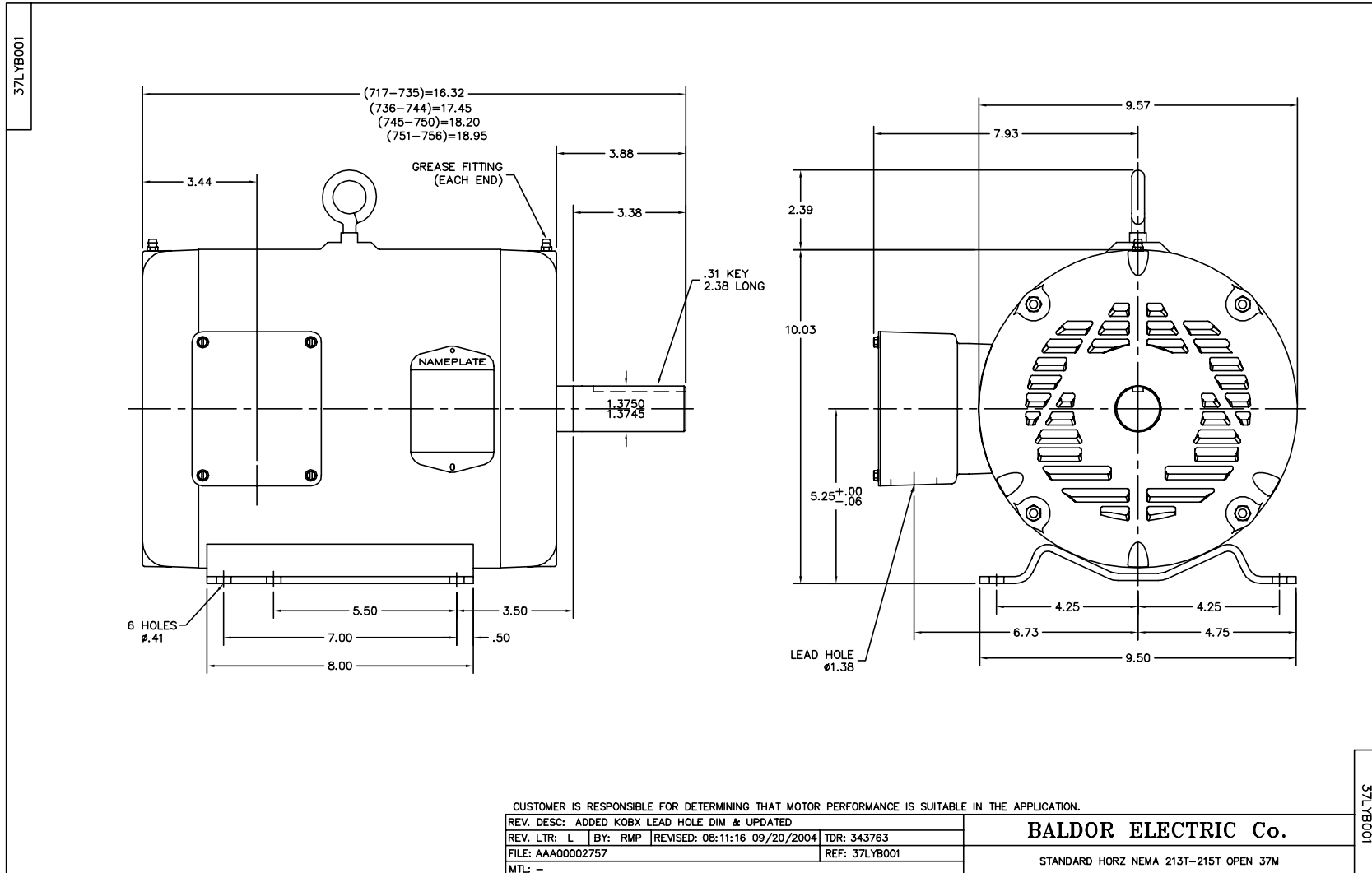


Performance Data at 230V, 60Hz, 1.9HP (Typical performance - Not guaranteed values)

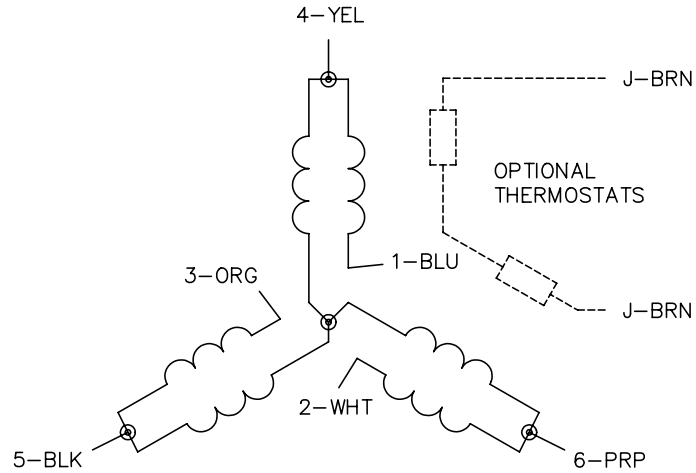
General Characteristics							
Full Load Torque:	11.5 LB-FT			Start Configuration:	DOL		
No-Load Current:	5.1 Amps			Break-Down Torque:	31.0 LB-FT		
Line-line Res. @ 25°C.:	2.91 Ohms A Ph / 0.0 Ohms B Ph			Pull-Up Torque:	18.0 LB-FT		
Temp. Rise @ Rated Load:	49 C			Locked-Rotor Torque:	20.0 LB-FT		
Temp. Rise @ S.F. Load:	63 C			Starting Current:	33.0 Amps		
Load Characteristics							
% of Rated Load	25	50	75	100	125	150	S.F.
Power Factor:	27.0	43.0	55.0	64.0	70.0	74.0	0.0
Efficiency:	62.1	73.4	77.2	78.3	78.1	77.1	0.0
Speed:	892.0	884.0	876.0	868.0	858.0	846.0	0.0
Line Amperes:	5.3	5.7	6.3	7.1	8.1	9.3	7.9

Performance Graph at 230V, 60Hz, 1.9HP Typical performance - Not guaranteed values

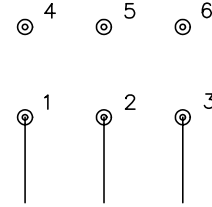




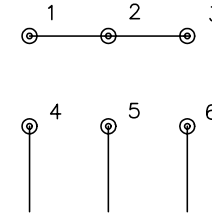
CD0032



LOW SPEED
(1Y)



HIGH SPEED
(2Y)



NOTES:

1. INTERCHANGE ANY TWO LINE LEADS TO REVERSE ROTATION.
2. OPTIONAL THERMOSTATS ARE PROVIDED WHEN SPECIFIED.
3. ACTUAL NUMBER OF INTERNAL PARALLEL CIRCUITS MAY BE A MULTIPLE OF THOSE SHOWN ABOVE.
4. LEAD COLORS ARE OPTIONAL. LEADS MUST ALWAYS BE NUMBERED AS SHOWN.

REV. DESC: REVISE TO SHOW OPTIONAL COLORS			
REV. LTR: E	BY: JLP	REVISED: 01/22/99 8:27	TDR: 0171435
CD0032		FILE: AAA00005145	MDL: -
		MTL: -	

BALDOR ELECTRIC Co.

3PH, SV, 6 LEADS, 2-SPEED 1-WINDING VARIABLE TORQUE

CD0032