

BALDOR® • RELIANCE

Product Information Packet

M1509T

7.5/3.8HP, 1740/860RPM, 3PH, 60HZ, 215T, 3754

Copyright © All product information within this document is subject to Baldor Electric Company copyright © protection, unless otherwise noted.

Part Detail							
Revision:	C	Status:	PRD/A	Change #:		Proprietary:	No
Type:	AC	Prod. Type:	3754M	Elec. Spec:	37WGS296	CD Diagram:	
Enclosure:	TEFC	Mfg Plant:		Mech. Spec:	37A001	Layout:	
Frame:	215T	Mounting:	F1	Poles:	04/08	Created Date:	02-06-2007
Base:	RG	Rotation:	R	Insulation:	F	Eff. Date:	05-08-2009
Leads:	6#14	Literature:		Elec. Diagram:		Replaced By:	

Nameplate NP1256L									
CAT.NO.	M1509T								
SPEC.	37A001S296								
HP	7.5/3.8								
VOLTS	230								
AMP	18.9/16.6								
RPM	1740/860								
FRAME	215T	HZ			60	PH	3		
SER.F.	1.15	CODE			K	DES	B	CLASS	F
NEMA-NOM-EFF	PF								
RATING	40C AMB-CONT								
CC	USABLE AT 208V								
DE	6307	ODE			6206				
ENCL	TEFC	SN							

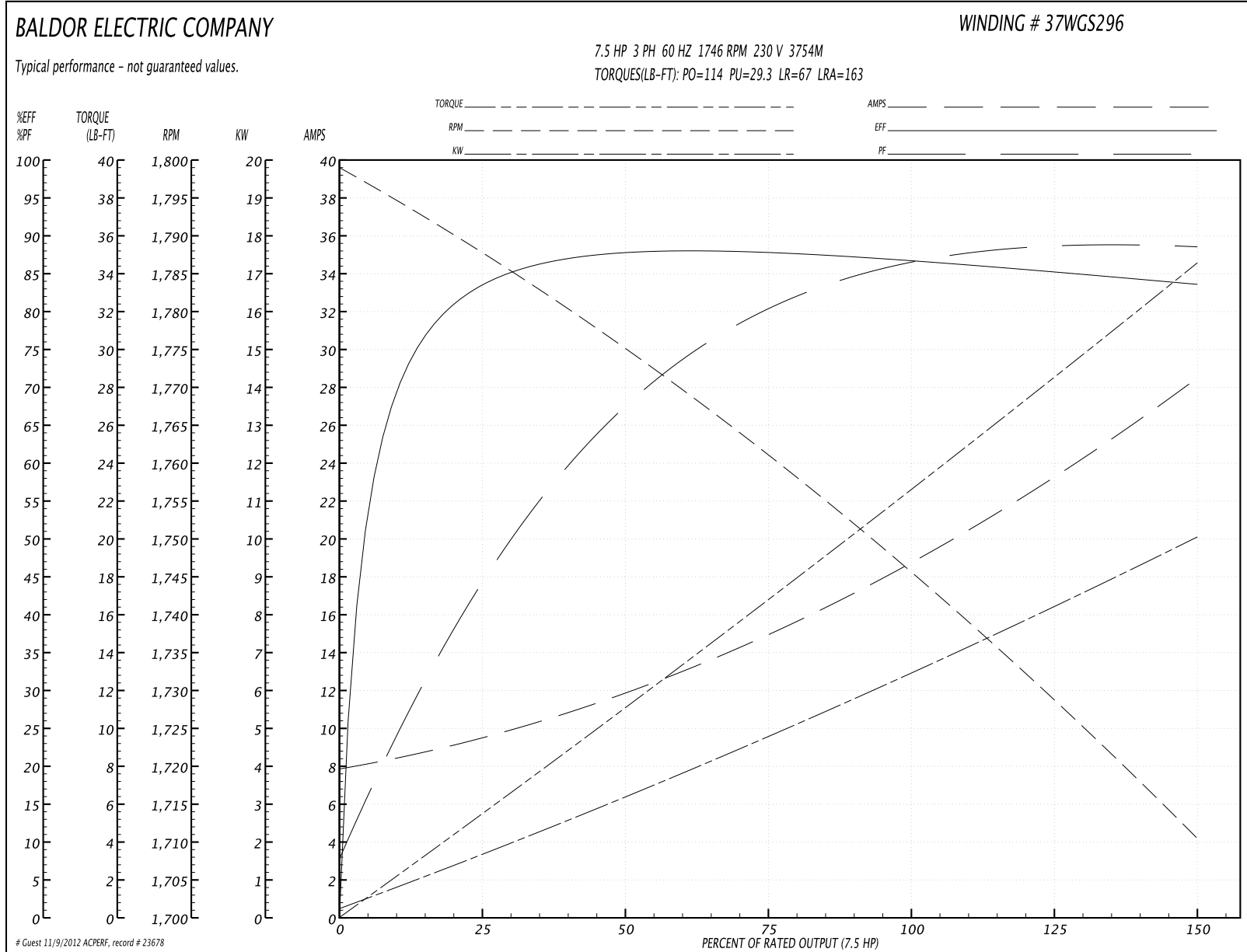
Parts List		
Part Number	Description	Quantity
SA153309	SA 37A001S296	1.000 EA
RA142024	RA 37A001S296	1.000 EA
HW3200A01	3/8-16X3/4 I-BLT WELDED F/S	1.000 EA
37CB3006	37 CB CASTING W/1.38 LEAD HOLE @ 6:00	1.000 EA
37GS1000SP	GASKET, CONDUIT BOX STD., .06 THICK LEXI	1.000 EA
51XW2520A12	.25-20 X .75, TAPTITE II, HEX WSHR SLTD	2.000 EA
11XW1032G06	10-32 X .38, TAPTITE II, HEX WSHR SLTD U	1.000 EA
37EP3101A01SP	FR ENDPLATE,TEFC, 37 L&M, W/GREASER	1.000 EA
HW4500A01	1641B(ALEMITE)400 UNIV, GREASE FITT	1.000 EA
HW5100A06	W2420-025 WVY WSHR (WB)	1.000 EA
37EP3100A01SP	STD PU ENDPLATE, ENCL,37 "T"-307 BRG, W/	1.000 EA
HW4500A01	1641B(ALEMITE)400 UNIV, GREASE FITT	1.000 EA
XY3118A12	5/16-18 HEX NUT DIRECTIONAL SERRATION	4.000 EA
51XB1214A20	12-14X1.25 HXWSSLD SERTYB	1.000 EA
07FH4007SP	IEC FH W/GRSR, NOTCH @ 6:00 & 3 FAN CVR	1.000 EA
51XW1032A06	10-32 X .38, TAPTITE II, HEX WSHR SLTD S	3.000 EA
37CB4516	LIPPED LID FOR 37 FRAME NEC KOBX	1.000 EA
37GS1008SP	37 GS FOR CB LID - LEXIDE	1.000 EA
51XW0832A07	8-32 X .44, TAPTITE II, HEX WSHR SLTD SE	4.000 EA
HW2501F21	KEY, 5/16 SQ X 2.375	1.000 EA
HA7000A02	KEY RETAINER RING, 1 1/8 DIA, 1 3/8 DIA	1.000 EA
LB1115	LABEL,LIFTING DEVICE	1.000 EA
85XU0407S04	4X1/4 U DRIVE PIN STAINLESS	2.000 EA
MJ1000A75	GREASE, POLYREX EM EXXON	0.050 LB

Parts List (continued)		
Part Number	Description	Quantity
37FN3002A01SP	EXFN, PLASTIC, 9.00 OD, 1.155 ID	1.000 EA
MG1000G27	PAINT- S9282E CHARCOAL GREY	0.028 GA
HA3104A25	THRUBOLT .31-18 X 14.75	4.000 EA
LB1119	WARNING LABEL	1.000 EA
LB1125C01	STD (STOCK) CARTON LABEL BALDOR WITH FLA	1.000 EA
LC0032	CONNECTION LABEL	1.000 EA
NP1256L	ALUM UL CSA CC	1.000 EA
37PA1052	PACKAGING GROUP, 150 LB MTR 2 X 4 RUNNER	1.000 EA

Accessories		
Part Number	Description	Multiplier
37-3301	C FACE KIT	P1

Performance Data at 230V, 60Hz, 7.5HP (Typical performance - Not guaranteed values)							
General Characteristics							
Full Load Torque:	22.4 LB-FT			Start Configuration:	DOL		
No-Load Current:	8.18 Amps			Break-Down Torque:	114.0 LB-FT		
Line-line Res. @ 25°C.:	0.489 Ohms A Ph / 0.0 Ohms B Ph			Pull-Up Torque:	29.3 LB-FT		
Temp. Rise @ Rated Load:	75 C			Locked-Rotor Torque:	67.0 LB-FT		
Temp. Rise @ S.F. Load:	94 C			Starting Current:	163.0 Amps		
Load Characteristics							
% of Rated Load	25	50	75	100	125	150	S.F.
Power Factor:	46.0	69.0	80.0	85.0	88.0	89.0	87.0
Efficiency:	83.9	88.4	88.6	87.4	85.7	83.5	86.4
Speed:	1788.0	1775.0	1761.0	1746.0	1730.0	1710.0	1736.0
Line Amperes:	9.11	11.6	15.0	18.9	23.3	28.3	21.5

Performance Graph at 230V, 60Hz, 7.5HP Typical performance - Not guaranteed values



Performance Data at 230V, 60Hz, 3.8HP (Typical performance - Not guaranteed values)

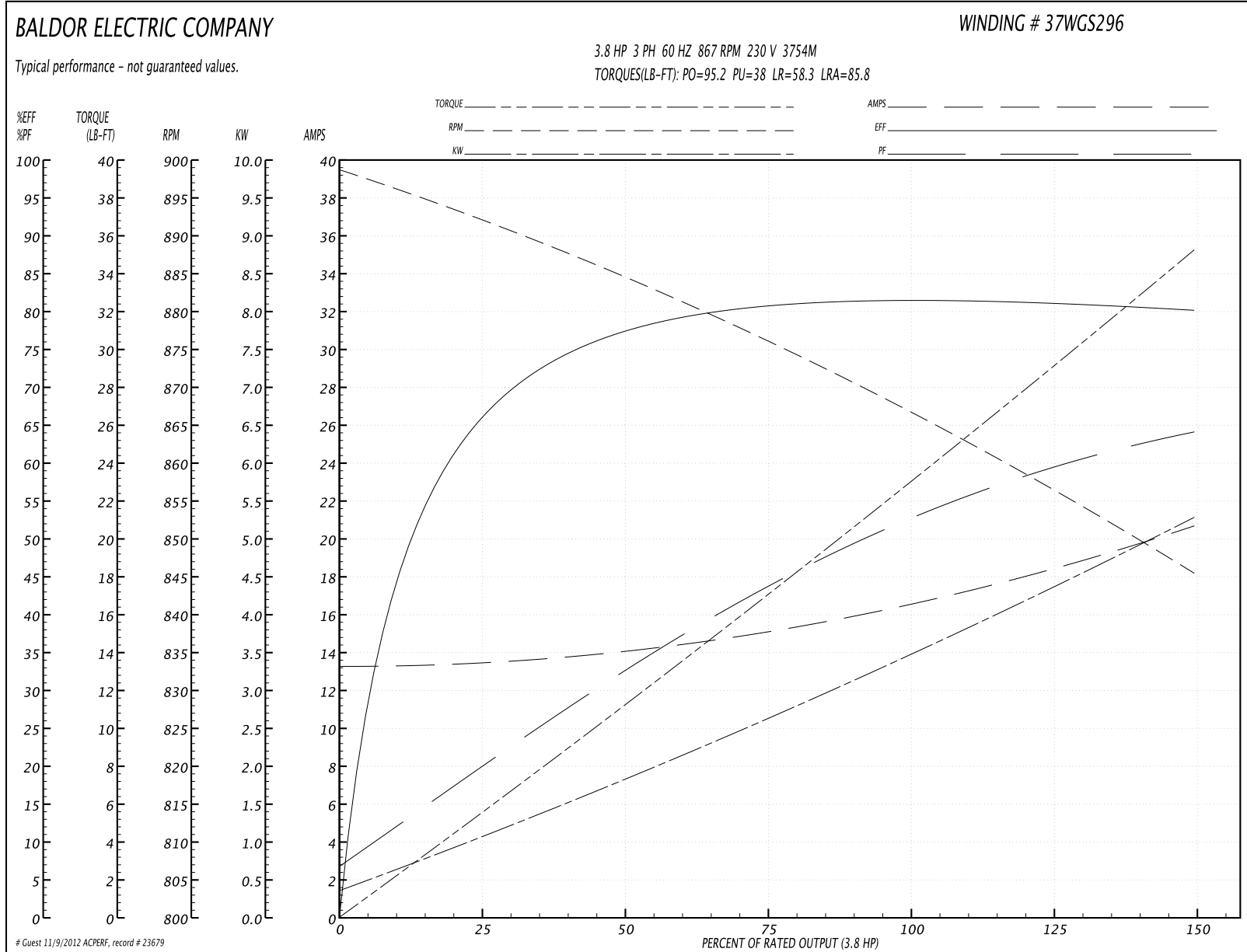
General Characteristics

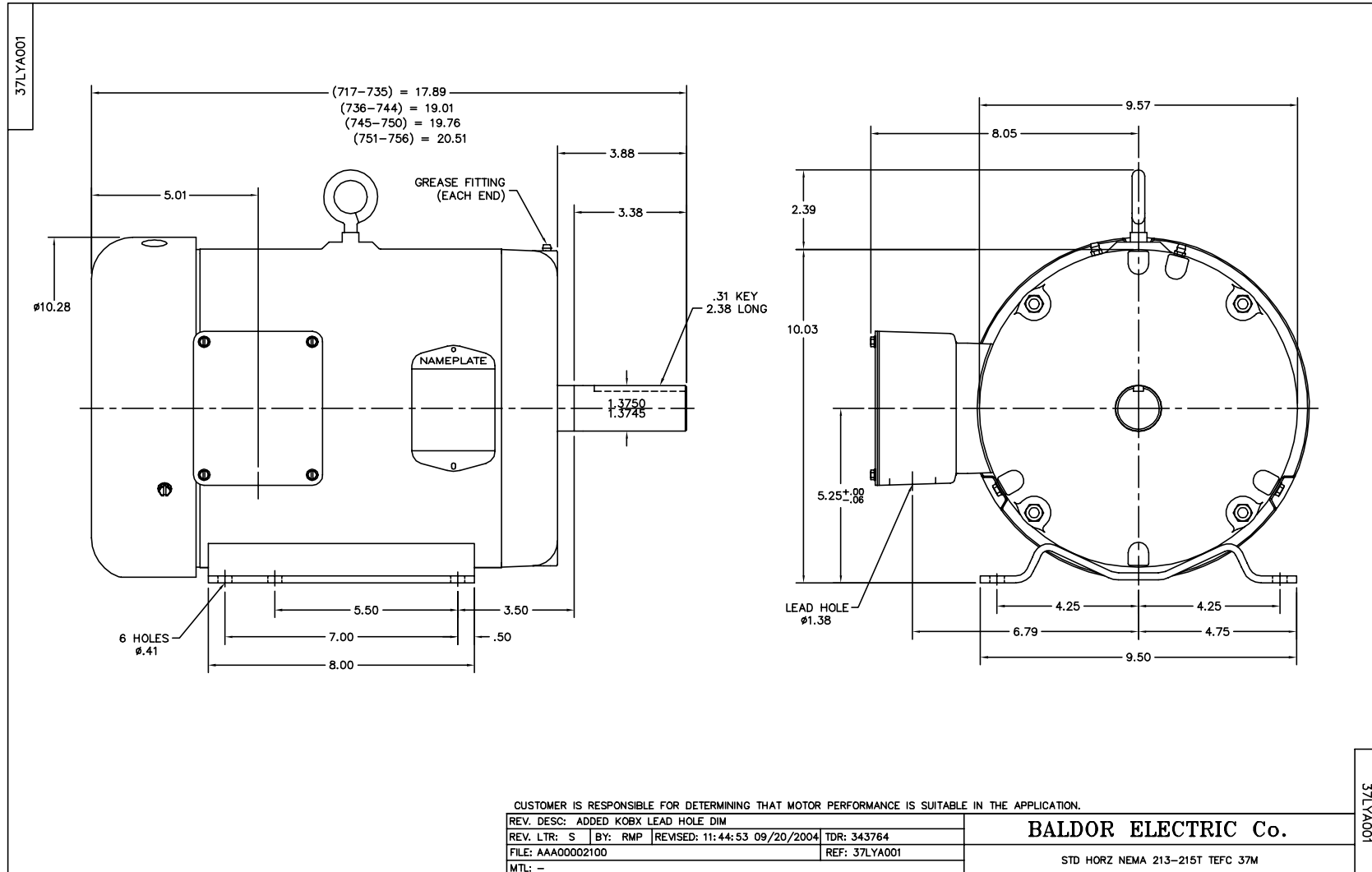
Full Load Torque:	23.1 LB-FT	Start Configuration:	DOL
No-Load Current:	13.3 Amps	Break-Down Torque:	95.2 LB-FT
Line-line Res. @ 25°C.:	0.645 Ohms A Ph / 0.0 Ohms B Ph	Pull-Up Torque:	38.0 LB-FT
Temp. Rise @ Rated Load:	84 C	Locked-Rotor Torque:	58.3 LB-FT
Temp. Rise @ S.F. Load:	98 C	Starting Current:	85.8 Amps

Load Characteristics

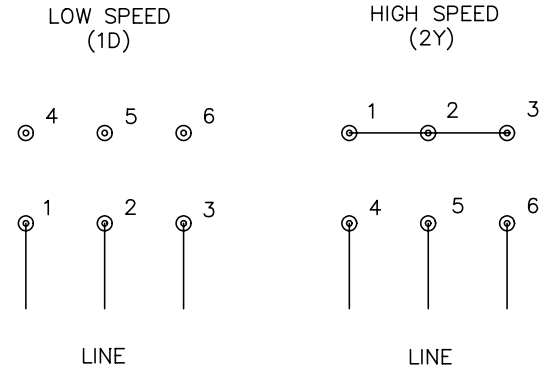
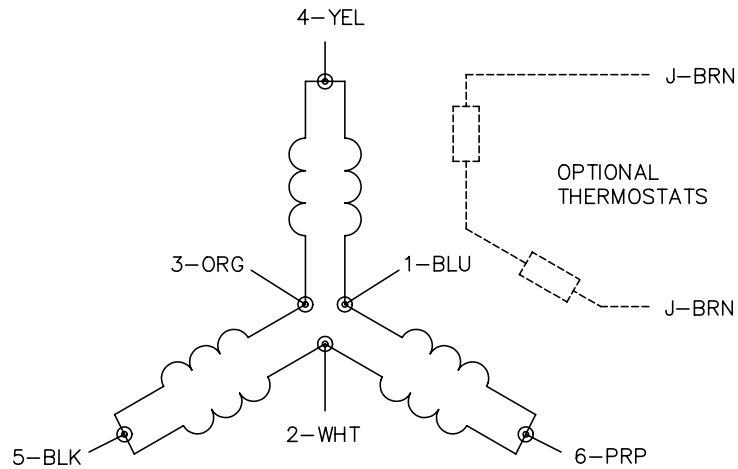
% of Rated Load	25	50	75	100	125	150	S.F.
Power Factor:	20.0	33.0	44.0	52.0	59.0	64.0	56.0
Efficiency:	65.8	77.3	80.9	81.8	81.3	80.1	81.5
Speed:	892.0	884.0	876.0	867.0	857.0	845.0	861.0
Line Amperes:	13.4	14.1	15.1	16.6	18.4	20.7	17.7

Performance Graph at 230V, 60Hz, 3.8HP Typical performance - Not guaranteed values





CD0011



- NOTES:
1. INTERCHANGE ANY TWO LINE LEADS TO REVERSE ROTATION.
 2. OPTIONAL THERMOSTATS ARE PROVIDED WHEN SPECIFIED.
 3. ACTUAL NUMBER OF INTERNAL PARALLEL CIRCUITS MAY BE A MULTIPLE OF THOSE SHOWN ABOVE.
 4. LEAD COLORS ARE OPTIONAL. LEADS MUST ALWAYS BE NUMBERED AS SHOWN.

REV. DESC: REVISE TO SHOW OPTIONAL COLORS			
REV. LTR: F	BY: JLP	REVISED: 01/21/99 5:04	TDR: 0171435
110000		FILE: DWG\142.wg	MDL: -
		MTL: -	

BALDOR ELECTRIC Co.

3PH, SV, 6 LEADS, 2-SPEED 1-WINDING CONSTANT TORQUE

CD0011