

BALDOR® • *RELIANCE*

Product Information Packet

M3153T

.75HP, 1140RPM, 3PH, 60HZ, 143T, 3428M, OPEN

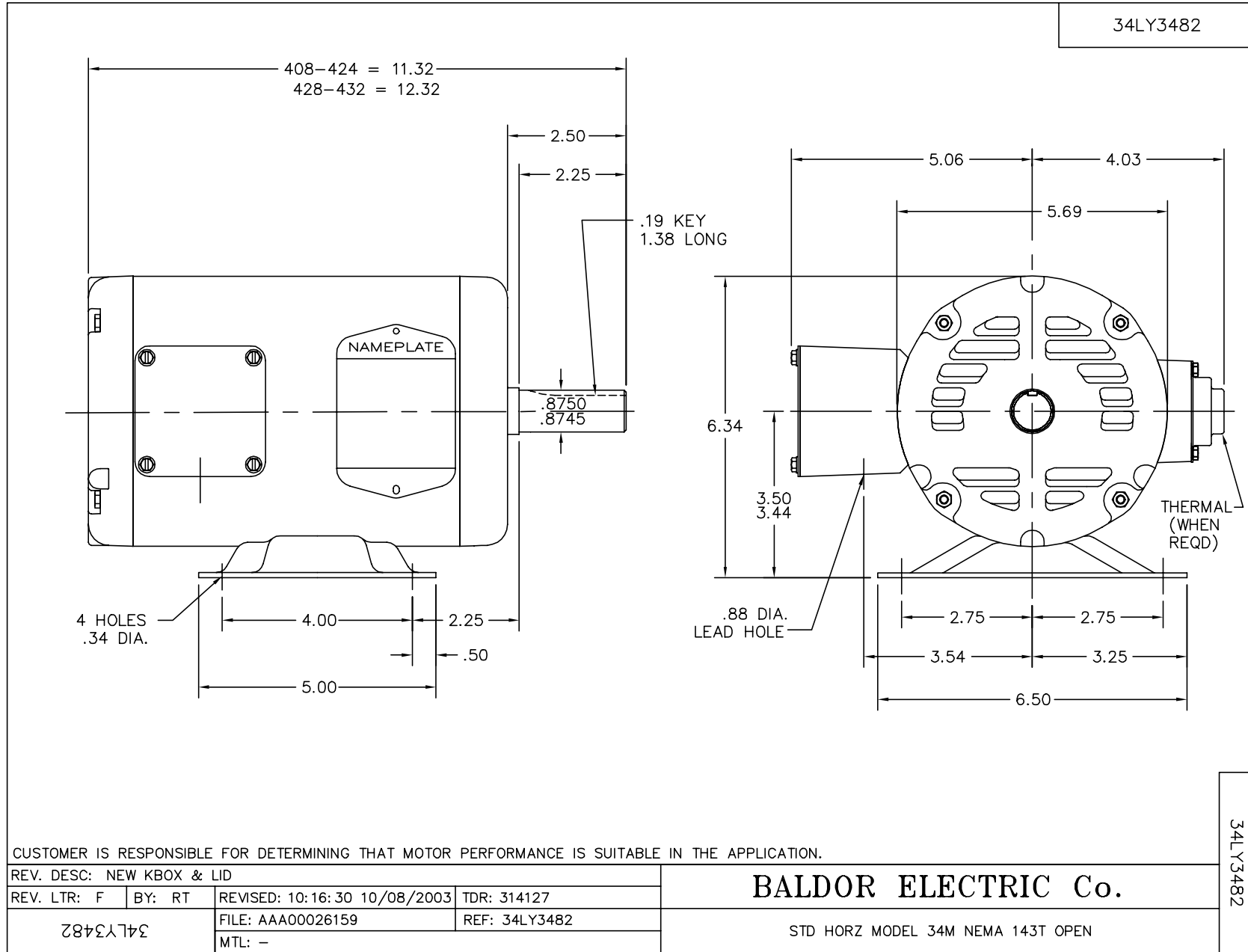
Copyright © All product information within this document is subject to Baldor Electric Company copyright © protection, unless otherwise noted.

| Part Detail | | | | | | | |
|-------------|------|-------------|-------|----------------|----------|---------------|------------|
| Revision: | L | Status: | PRD/A | Change #: | | Proprietary: | No |
| Type: | AC | Prod. Type: | 3428M | Elec. Spec: | 34WGW012 | CD Diagram: | |
| Enclosure: | OPEN | Mfg Plant: | | Mech. Spec: | 34-3482 | Layout: | |
| Frame: | 143T | Mounting: | F1 | Poles: | 06 | Created Date: | |
| Base: | RG | Rotation: | R | Insulation: | B | Eff. Date: | 03-28-2011 |
| Leads: | 9#18 | Literature: | | Elec. Diagram: | | Replaced By: | |

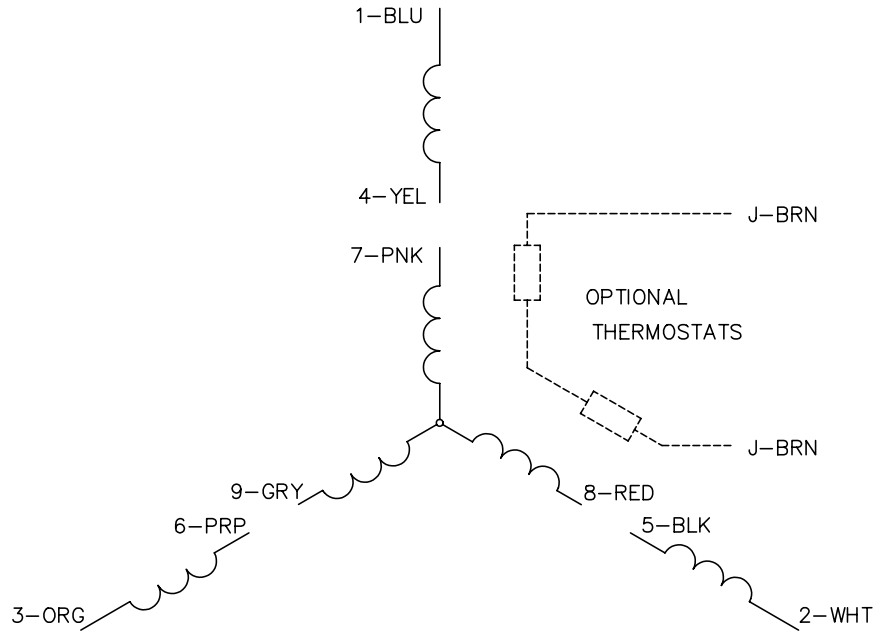
| Nameplate NP1256L | | | | | | | | | |
|-------------------|-----------------|------|------|----------------|-----|-------|---|--|--|
| CAT.NO. | M3153T | | | | | | | | |
| SPEC. | 34-3482W12 | | | | | | | | |
| HP | .75 | | | | | | | | |
| VOLTS | 208-230/460 | | | | | | | | |
| AMP | 3.3-3/1.5 | | | | | | | | |
| RPM | 1140 | | | | | | | | |
| FRAME | 143T | HZ | 60 | PH | 3 | | | | |
| SER.F. | 1.15 | CODE | K | DES | B | CLASS | B | | |
| NEMA-NOM-EFF | 77 | PF | 59 | | | | | | |
| RATING | 40C AMB-CONT | | | | | | | | |
| CC | | | | USABLE AT 208V | 3.3 | | | | |
| DE | 6205 | ODE | 6203 | | | | | | |
| ENCL | OPEN | SN | | | | | | | |
| | SFA 3.5-3.2/1.6 | | | | | | | | |

| Parts List | | |
|---------------|--|----------|
| Part Number | Description | Quantity |
| SA008824 | SA 34-3482W12 | 1.000 EA |
| RA005271 | RA 34-3482W12 | 1.000 EA |
| NS2512A01 | INSULATOR, CONDUIT BOX X | 1.000 EA |
| 34CB3002A | CB CAST W/.88 DIA HOLE | 1.000 EA |
| 51XB1016A07 | 10-16 X 7/16 HXWSSLD SERTYB | 2.000 EA |
| 11XW1032G06 | 10-32 X .38, TAPTITE II, HEX WSHR SLTD U | 1.000 EA |
| 34EP3200A01SP | FR ENDPLATE, MACH | 1.000 EA |
| HW5100A03SP | WAVY WASHER (W1543-017) | 1.000 EA |
| 34EP3904A01 | PU ENDPLATE, CAST | 1.000 EA |
| XY1032A02 | 10-32 HEX NUT DIRECTIONAL SERRATION | 4.000 EA |
| 34CB4517 | CB LID 4 MTG HOLES .22 DIA STAMPED, FOR | 1.000 EA |
| 51XW0832A07 | 8-32 X .44, TAPTITE II, HEX WSHR SLTD SE | 4.000 EA |
| HW2501D13SP | KEY, 3/16 SQ X 1.375 | 1.000 EA |
| HA7000A01 | KEY RETAINER 7/8" DIA SHAFT | 1.000 EA |
| MG1000G27 | PAINT- S9282E CHARCOAL GREY | 0.014 GA |
| 10XF0440S02 | 04-40 X 1/8 TYPE F HEX HD STAINLESS STIC | 2.000 EA |
| HA3100A38 | THRUBOLT 10-32 X 9.375 | 4.000 EA |
| LB1125C01 | STD (STOCK) CARTON LABEL BALDOR WITH FLA | 1.000 EA |
| LC0005E01 | CONN.DIA./WARNING LABEL (LC0005/LB1119) | 1.000 EA |
| NP1256L | ALUM UL CSA CC | 1.000 EA |
| 34PA1005 | PACKING GROUP, BALDOR | 1.000 EA |

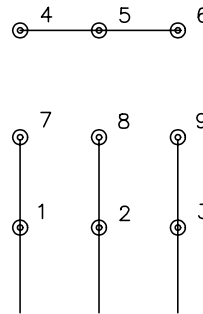
| Accessories | | |
|-------------|-------------|------------|
| Part Number | Description | Multiplier |
| 34-3903A | C FACE KIT | A8 |



CD0005

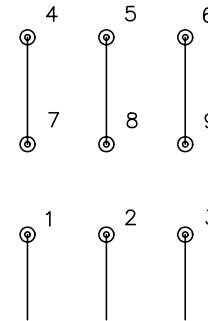


LOW VOLTAGE
(2Y)



LINE

HIGH VOLTAGE
(1Y)



LINE

NOTES:

1. INTERCHANGE ANY TWO LINE LEADS TO REVERSE ROTATION.
2. OPTIONAL THERMOSTATS ARE PROVIDED WHEN SPECIFIED.
3. ACTUAL NUMBER OF INTERNAL PARALLEL CIRCUITS MAY BE A MULTIPLE OF THOSE SHOWN ABOVE.
4. LEAD COLORS ARE OPTIONAL. LEADS MUST ALWAYS BE NUMBERED AS SHOWN.

| | | | |
|---|---------|-------------------------|--------------|
| REV. DESC: REVISE TO SHOW OPTIONAL COLORS | | | |
| REV. LTR: E | BY: JLP | REVISED: 01/19/99 10:15 | TDR: 0171435 |
| 90000 | | FILE: AAA00005140 | MDL: - |
| | | MTL: - | |

BALDOR ELECTRIC Co.

3PH, DV, 9 LEADS

CD0005